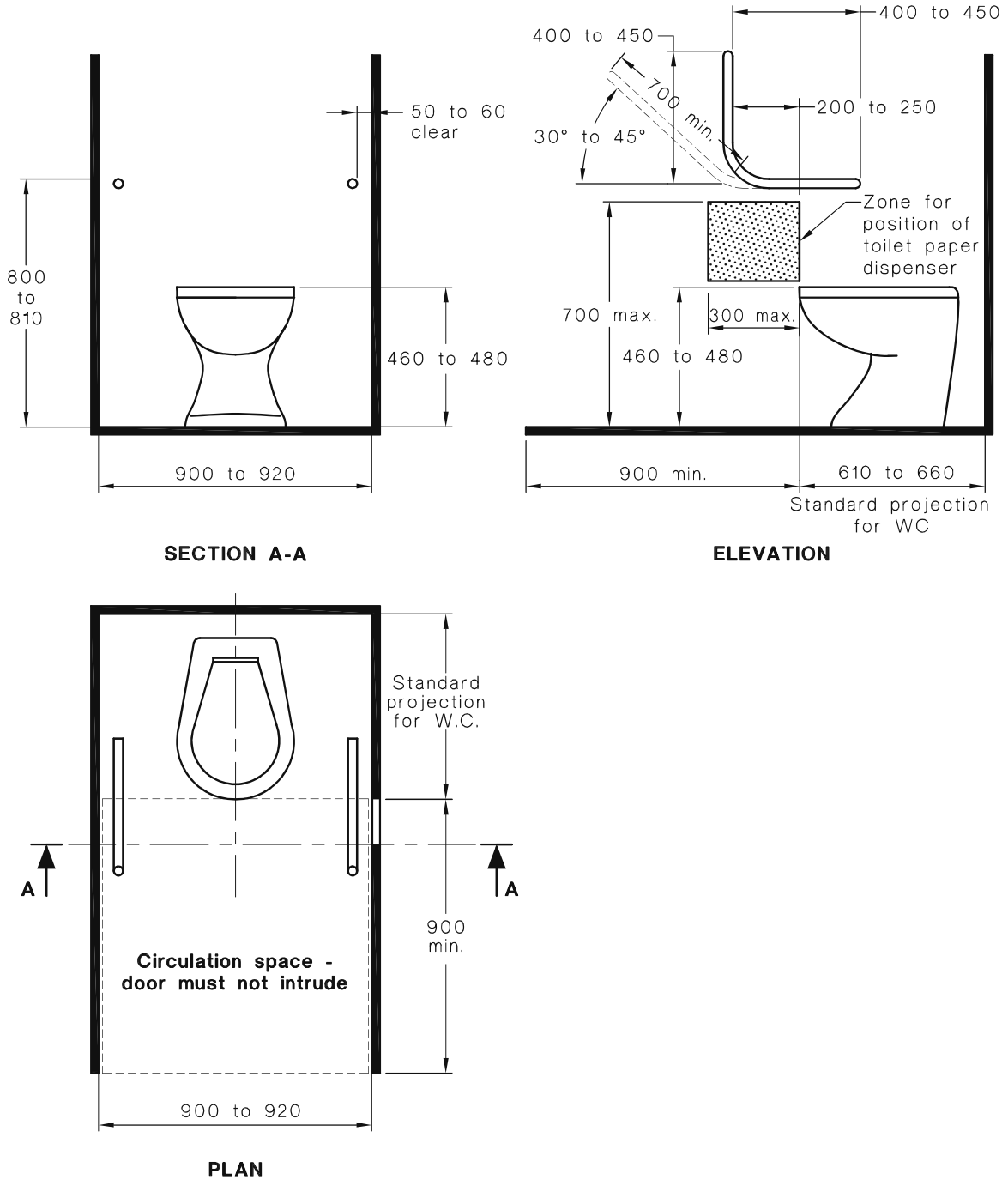


**16.5 Coat hook**

A coat hook shall be provided within the sanitary compartment and at a height between 1350 mm to 1500 mm from the floor.

A1



DIMENSIONS IN MILLIMETRES

FIGURE 53(A) SANITARY COMPARTMENT FOR PEOPLE WITH AMBULANT DISABILITIES—PLAN AND ELEVATION