



indoor tabletop smokeless grill + griddle

Effortless countertop grilling - now practically smoke-free



BM-GR8809

INSTRUCTIONS MANUAL

www.baumannliving.com

TABLE OF CONTENTS

IMPORTANT SAFEGUARDS 2

PARTS AND FEATURES..... 6

USING THE CONTROL PANEL..... 8

BEFORE FIRST USE..... 9

ASSEMBLING YOUR INDOOR SMOKELESS GRILL 10

USING YOUR INDOOR SMOKELESS GRILL 12

GRILLING TIPS..... 14

CLEANING AND MAINTENANCE 15

TROUBLESHOOTING 17

WARRANTY TERMS AND CONDITIONS..... 18

IMPORTANT SAFEGUARDS

When using this appliance, basic safety precautions should always be followed, including the following:

- Read all instructions.
- To protect against electric shock, do not immerse cord, plugs, or the base unit which contains electrical components and heating elements, in water or other liquid. Do not rinse under the tap.
- Do not touch hot surfaces. Use handles or knobs.
- This appliance is not intended for use by persons with reduced physical, sensory, or mental capabilities or a lack of experience and knowledge unless they are under the supervision of a responsible person or have been given proper instruction in using the appliance.
- This appliance is not intended for use by children.
- Close supervision is necessary when any appliance is used by or near children.
- When cooking, do not place the appliance against a wall or against other appliances. Leave at least 5 inches free space on the back and sides and above the appliance. Do not place anything on top of the appliance.
- Do not operate any appliance with a damaged cord or plug or after the appliance malfunctions, or has been damaged in any manner. Return the appliance to the nearest authorized service center for examination, repair or adjustment.
- Do not use this appliance if the plug, the power cable, or the appliance itself is damaged in anyway.

- If the supply cord is damaged, it must be replaced by the manufacturer, its service agent, or similarly qualified persons in order to avoid a hazard.
- Keep the appliance and its power cable out of reach of children when it is in operation or in the cooling process.
- Do not let cord hang over the edge of a table or counter, or touch hot surfaces.
- Do not place this unit on or near a hot gas or electric burner, or in a heated oven.
- Do not plug in the power cable, or operate the appliance controls with wet hands.
- Never connect this appliance to an external timer switch or separate remote-control system.
- Never use this appliance with an extension cord of any kind.
- Do not operate the appliance on or near combustible materials, such as tablecloths and curtains.
- Do not use this appliance for any purpose other than described in this manual.
- Never operate the appliance unattended.
- Wear oven mitts when handling hot components or touching hot surfaces.
- Always operate the appliance on a horizontal surface that is level, stable, and noncombustible.
- This appliance is intended for normal household use only. It is not intended for use in commercial or retail environments.
- If the appliance is used improperly or for professional or semiprofessional purposes or if it is not used according to the instructions in the user manual, the warranty becomes

invalid and the manufacturer will not be held liable for damages.

- Unplug from outlet when not in use and before cleaning.
- Allow to cool before putting on or taking off parts, and before cleaning the appliance.
- The glass lid and handle get very hot. Always use oven mitts.
- This appliance is not intended to be operated using external timer or remote-control system.
- Only use genuine Baumann Living accessories and attachments with this unit. Third-party accessories and attachments are not recommended as they may cause hazard and/or injury.
- Extreme caution must be used when moving an appliance containing hot oil or other hot liquids.
- Always attach plug to the appliance first, then plug cord into the wall outlet. To disconnect, turn any control off, then remove plug from wall outlet.
- Do not use outdoors.

A short power-supply cord is provided to reduce the hazards resulting from entanglement or tripping over a longer cord.


An extension cord may be used with care; however, be sure the marked electrical rating is at least as great as the electrical rating of this appliance. If the appliance is of the grounded type, the extension cord should be a grounding 3-wire cord.

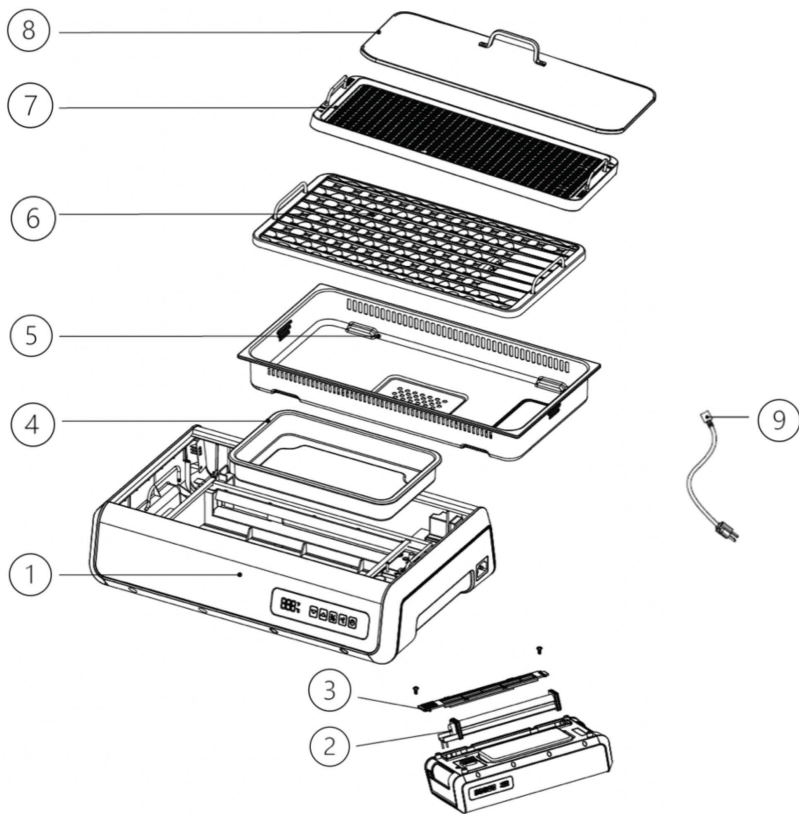
The extension cord should be positioned such that it does not drape over the counter or table top where it can be pulled on by

children or tripped over. The electrical rating of this appliance is listed on the bottom panel of the unit.

**SAVE THESE INSTRUCTIONS.
FOR HOUSEHOLD USE ONLY.**

PARTS AND FEATURES

 **CAUTION: HOT SURFACE!** To indicate that the marked item can be hot and should not be touched without taking care.



- ① Base unit with control panel
- ② Fan (removable; installed in base)
- ③ Fan cover
- ④ Water pan
- ⑤ Drip tray
- ⑥ Grill plate
- ⑦ Griddle plate
- ⑧ Glass lid
- ⑨ Power cord

USING THE CONTROL PANEL



POWER button 

Press to turn on the unit.

FAN button 

Press to turn the fan on. The fan indicator light will come on.

FUNCTION button 

Press to set the temperature or time.

The temperature settings are 212 / 248 / 284 / 320 / 356 / 392 / 428 / 482°F and the default temperature setting is 212°F.

Time can be adjusted from 20 to 120 minutes and can be adjusted in increments of 5 minutes. The default time setting is 20 minutes.

ARROW buttons  

Use to adjust temperature and time.

BEFORE FIRST USE

1. Carefully unpack the unit and remove all packing materials, labels, and stickers. To remove any dust that may have accumulated during packaging, wipe the cooking surfaces and base with a clean, damp cloth. Dry thoroughly. Do not use harsh or abrasive cleaners on any part of the unit.

WARNING! *Do not immerse the cord or plug in water or other liquid.*

2. Place the unit on a dry, stable surface away from an open flame or hot burners.
3. Assemble the unit as shown on page 5.
4. Plug the unit into a dedicated outlet.
5. Set the unit to run for about 5 minutes on to burn off any residue. A small amount of smoke and odor may be detected. This is normal and should disappear after a few minutes.

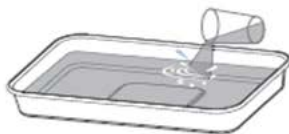
ASSEMBLING YOUR INDOOR SMOKELESS GRILL

Assembling the Unit

1. Place the base unit on a stable, level, horizontal, and heat-resistant surface. Leave ample space on all sides of the unit to facilitate air flow.
2. Assemble the unit as shown on page 5.

NOTE: *When installing the grill (or griddle) plate to the base unit, make sure to press on the right side firmly until the plate clicks into place. If the grill (or griddle) plate is not installed properly, the unit will not turn on and heat up.*

3. Fill the water pan with water at least 1/3 full.



Assembling the Glass Lid with Handle

1. Insert a silicon gasket (3) through the hole in the glass lid (4).
2. Slide one metal washer (5) onto a screw (2).
3. Insert the screw from under the lid then through the hole and into the handle (1).
4. Screw tight enough to keep the screw in place but loose enough to adjust the handle.
5. Repeat steps 1-5 for the second screw.
6. Fully tighten both screws, being careful not to overtighten to avoid damaging the glass.

1. Handle



2. Screws (x2)



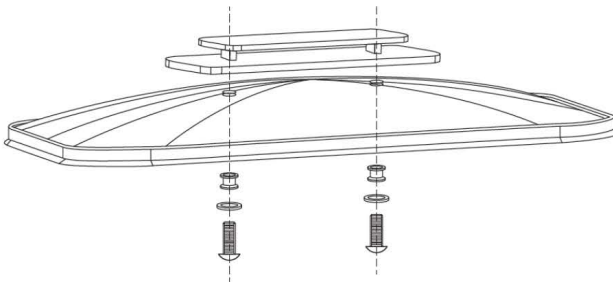
3. Silicon gaskets (x2)



4. Glass lid




5. Metal washers (x2)

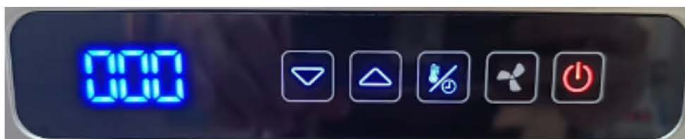






NOTE: *You may need pliers or an adjustable wrench to tighten the screws.*

USING YOUR INDOOR SMOKELESS GRILL




This product has been designed and engineered to reduce to a minimum the smoke and visible vapors usually associated with grilling.


1. Plug the power cord into a dedicated outlet.
2. Press the Power button ; the LCD screen will display '000.'



3. Press the Function button  to set the temperature. The default temperature setting is 212°F.
4. Use the Arrow buttons   to select your desired temperature setting: 212°F / 248°F / 284°F / 320°F / 356°F / 392°F / 428°F / 482°F. The grill will start to heat once temperature is set. The temperature display will blink until set temperature is reached, after which the temperature display will come on steady.
5. Press the Fan button  to turn the fan on. Alternatively, the fan will automatically turn on a few seconds after setting the temperature.

NOTE: *Fan should be kept running throughout the grilling process to prevent grease build up.*

6. Press the Function button  again to set the time. The default setting is 20 minutes. Use the Arrow buttons   to set your desired time setting. The LCD screen will alternately display the current temperature and time setting.


To cancel the timer, press the Decrease button  once time after the 20 minutes setting. Only the temperature will show on the LCD screen.

7. Add the food, put the lid on, and grill to your personal taste. Turn the food as needed.

NOTES:

- *You may spray or brush the grill (or griddle) cooking surface with cooking oil prior to grilling to help prevent food from sticking.*
- *Cooking with the glass lid on the unit is recommended because it maintains the cooking temperature, seals in flavor, and prevents splatter.*
- *If the timer is not set, the grill will automatically turn off after 90 minutes.*

CAUTION! The glass lid and handle get very hot! Always use oven mitts.

8. After grilling is finished, press the Power button  to shut off the unit. Unplug the power cord and allow unit to cool fully before disassembling for cleaning.

GRILLING TIPS

- Use separate utensils and platters for raw and cooked meat.
- Always marinate in a tightly covered nonmetal dish and turn the food occasionally. Be sure to refrigerate all meats while marinating.
- If leftover wet marinade is to be used as a sauce with the cooked food, be sure to place it in a small pan and heat to a rolling boil before serving to eliminate bacterial growth.
- Similar to a stove top frying pan, grease from high-fat foods, such as bacon or sausage, may splatter on the countertop. Protect the countertop as necessary.
- Before grilling, partially cook bone-in chicken, ribs, and uncooked smoked or fresh sausages for best results. If not partially cooked, these meats may become overbrowned on the outside before the center is done.
- To prevent scratching the coating, use only nonmetallic utensils. Do not cut food on the grill plate using sharp utensils, such as forks or knives, which can scratch the cooking surface.
- Do not use steel wool or other metal pads. They could leave coarse scratches.
- Always rinse thoroughly and dry immediately with a soft towel.

CLEANING AND MAINTENANCE

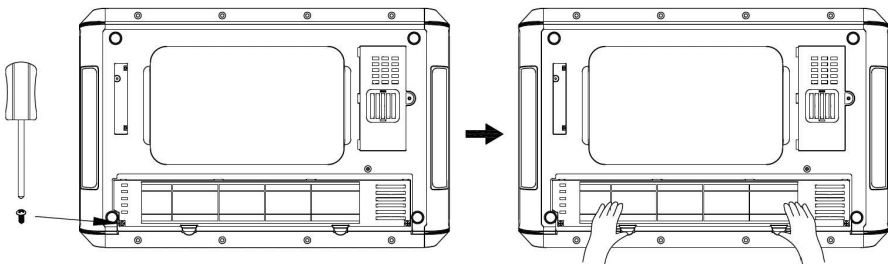
- Before cleaning, be sure to unplug the cord from the outlet. If necessary, wipe the cord with a damp cloth.
- Allow the unit to cool completely before cleaning. The grill and griddle plates can be placed at the bottom rack of the dishwasher or washed by hand. The base unit, drip tray, and collection pan can be washed by hand with a warm water, soft cloth and mild cleaning liquid.
- Remove the water in the water pan to avoid spillage.
- Allow the cooking plates to cool down before washing. Always be sure to wash the cooking plates after each use to remove any grease that may have accumulated. To keep grease from dripping outside of the base, always ensure that you are using your unit on a level surface and that the drip is completely clear of food particles.
- Do not use scouring pads or harsh cleaners with this unit. If necessary, use a nylon bristle brush or plastic scrubbing pad.
- Do not let the cooking surfaces soak overnight. This could damage the nonstick coating.
- Any other servicing should be performed by an authorized service representative.
- Since the grill (or griddle) plate is connected to the heating element, wipe the heating element dry after cleaning the plate.

Removing the Fan

If you are thoroughly cleaning the base unit with water and dishwashing liquid, remove the fan. When replacing the fan, make sure to insert the two-pronged connection into the two round receptacles on in the base unit.

CAUTION! *Unplug unit before removing the fan.*

1. Turn over the base unit.
2. Slide and remove the fan cover.
3. Lift the fan out of the base unit.



TROUBLESHOOTING

If your unit is not heating properly:

- Make sure the power cord is plugged into an electrical socket.
- Set the temperature higher than 212°F.
- Make sure the cooking plate has been properly installed.

If food is undercooked or overcooked:

- Change the cooking time and temperature accordingly.

If the fan is not working, the assembly may not be fully connected.

- Disassemble the unit and reattach the fan component.

WARRANTY TERMS AND CONDITIONS

ONE-YEAR LIMITED WARRANTY ON PARTS AND LABOR

BAUMANN LIVING provides a warranty to the original purchaser of this product against defects in materials and workmanship for one year. If a product covered by this warranty is determined to be defective within the warranty period, **BAUMANN LIVING** will repair or replace the defective part with a new or remanufactured part free of charge subject to terms and conditions stated herein.

To obtain warranty service, proof of purchase in the form of a sales invoice or copy thereof is required to show that a product is within the warranty period. If any one of the documents cannot be produced, corresponding fees for labor and replacement parts will be charged.

Parts and Labor

There will be no charge for parts and labor during the warranty period. Replacement parts or units may be new or recertified and are upon **BAUMANN LIVING's** option and sole discretion. Replacement parts and units are warranted for the remaining portion of the original warranty. Our decision on all questions relating to complaints as a result of defects, either workmanship or materials, shall be conclusive and you shall agree to abide by such decision. Any unit or defective part that have been replaced shall become **BAUMANN LIVING's** property. After the lapse of this warranty, a charge will be made on all labor and replacement of parts.

Types of Services

Defective Products must be sent to any **BAUMANN LIVING** service center (where available) or to the authorized distributor to obtain warranty service. **BAUMANN LIVING** is neither responsible for transportation/shipping costs to the service center/distributor nor is **BAUMANN LIVING** responsible to cover return shipping to the customer. Product returns to **BAUMANN LIVING** service centers or authorized distributor must utilize either the original carton box and shipping material or packaging that affords an equal degree of protection.

For home service (where available), the transportation fee of **BAUMANN LIVING** service personnel will be charged to the customer, depending on the location. Our service personnel reserve all rights to refuse to attend to any equipment installed in an inaccessible location or any other hazardous situation.

LIMITATIONS AND EXCLUSIONS

BAUMANN LIVING one-year limited warranty only covers defects in materials and workmanship; however, this warranty does not cover the following:

1. Damage resulting from accidents, transport, misuse, abuse, alteration, tampering, or failure of the purchaser to follow normal operating procedures outlined in the user's manual.
2. Damage caused by negligence and poor maintenance.
3. Defects or damage due to spillage of food/liquids or improper usage of electrical supply or electrical circuit, major fluctuations in voltage, exposure to rain or moisture, wrong fuel or oil used.

4. Damage, losses, and defects as a result of fire, flood, or other Acts of God.
5. Normal wear-and-tear, corrosion, rusting, or stains.
6. Defects & damage arising from improper testing, operation, usage of the wrong component, demonstration, maintenance, installation, adjustment, or any alteration or modification of any kind.
7. Scratches & damage to the outer surface areas and externally exposed parts that are due to normal customer use.
8. General maintenance & routine servicing.
9. Claims for damaged/missing parts after 30 days from the date of purchase.
10. If any part or parts of the unit are replaced with a part or parts not supplied or approved by us, or if the unit has been dismantled or repaired by any person other than a **BAUMANN LIVING** authorized technician.
11. Any equipment/product which has its serial number removed or made illegible/tampered with.
12. If the warranty card is altered, defaced, or erased in any manner whatsoever.
13. If the unit is used for purposes other than household use, such as commercial use.
14. The one (1) year warranty covers the mainboard and control PCB, motor, heating element, boiler and power supply. However, this warranty does not cover parts (i.e. accessories, filter, glass carafe, heating and grill plates, wire racks, drip tray, glass and plastic jar, blades, cutter, baskets, glass bowl, handle, trays, fuse, coffee holder, water and milk tank, silicon tubes, belts, gaskets, rubber connectors, gears, glass door, bulb, handle, interior and exterior casing) that are subject to wear and tear, rust, stains, or corrosion.

This one-year limited warranty does not cover Products sold **"AS IS"**, **"FACTORY RECTIFIED"**, or by a non-authorized reseller.

THERE ARE NO EXPRESS WARRANTIES OTHER THAN THOSE LISTED OR DESCRIBED ABOVE. ANY IMPLIED WARRANTIES, INCLUDING ANY IMPLIED WARRANTY OF MERCHANTABILITY AND FITNESS FOR A PARTICULAR PURPOSE, SHALL BE LIMITED IN DURATION TO THE PERIOD OF TIME SET FORTH ABOVE. **BAUMANN LIVING'S** TOTAL LIABILITY FOR ANY AND ALL LOSSES AND DAMAGES RESULTING FROM ANY CAUSE WHATSOEVER INCLUDING **BAUMANN LIVING'S** NEGLIGENCE, ALLEGED DAMAGE, OR DEFECTIVE GOODS, WHETHER SUCH DEFECTS ARE DISCOVERABLE OR LATENT, SHALL IN NO EVENT EXCEED THE PURCHASE PRICE OF THE PRODUCT. **BAUMANN LIVING** SHALL NOT BE RESPONSIBLE FOR LOSS OF USE, COMMERCIAL LOSS, LOST REVENUE OR LOST PROFITS, OR OTHER INCIDENTAL OR CONSEQUENTIAL DAMAGES. THIS WARRANTY IS SUBJECT TO CHANGE WITHOUT NOTICE.

IMPORTANT: Please present sales invoice as proof of purchase whenever you require our service during the warranty period.