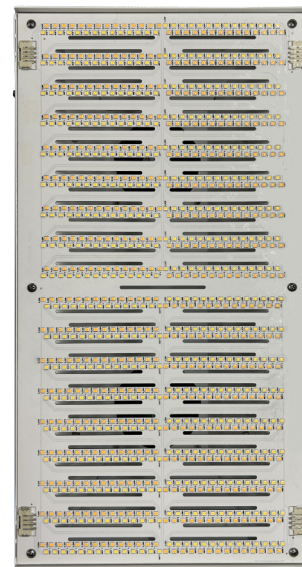
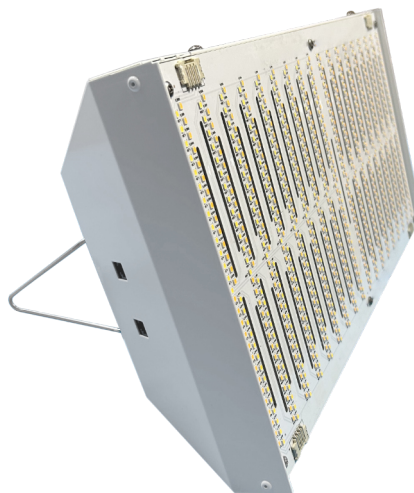




# Powerhouse

## 600W Grow Light

The 600W Powerhouse grow light is a Made in the USA know for it's High-performance, and energy efficient horticulture LEDs. Ideal for greenhouse cultivation, vertical farming, and other indoor applications. The Powerhouse features energy savings, a patented spectrum increasing the quality of your grow and increased uniformity.



### KEY FEATURES

- Industry Leading Performance
- Replaces 1000W DE 1:1
- Patented Spectrum
- Natural White Light
- Tunable Spectrum
- Suitable for CEA use with all crops.
- Ideally Suited for GH Supplemental application
- Powder Coated aluminum housing
- Easy Installation

### APPLICATIONS

- Cannabis
- Food
- Research & Development
- Floriculture

### ORDERING INFORMATION

EXAMPLE: PH600UST10U

|                 |                            |
|-----------------|----------------------------|
| <b>SERIES</b>   | <b>Powerhouse   PH</b>     |
| <b>WATTAGE</b>  | 600                        |
| <b>SPECTRUM</b> | U - Universal              |
| <b>VOLTAGE</b>  | ST- 120-277V • HV 180-528V |
| <b>COLOR</b>    |                            |
| <b>OPTIONS</b>  | 10U - 10' Cord & Plug      |

### WARRANTY & LISTINGS

- cULus Listed for horticultural damp locations not exceeding a maximum ambient temperature of 40° c.
- DLC horticulture approved
- 5 Year Warranty of all Electronics & Housing

Project: \_\_\_\_\_

Type: \_\_\_\_\_

Model: \_\_\_\_\_

Date: \_\_\_\_\_

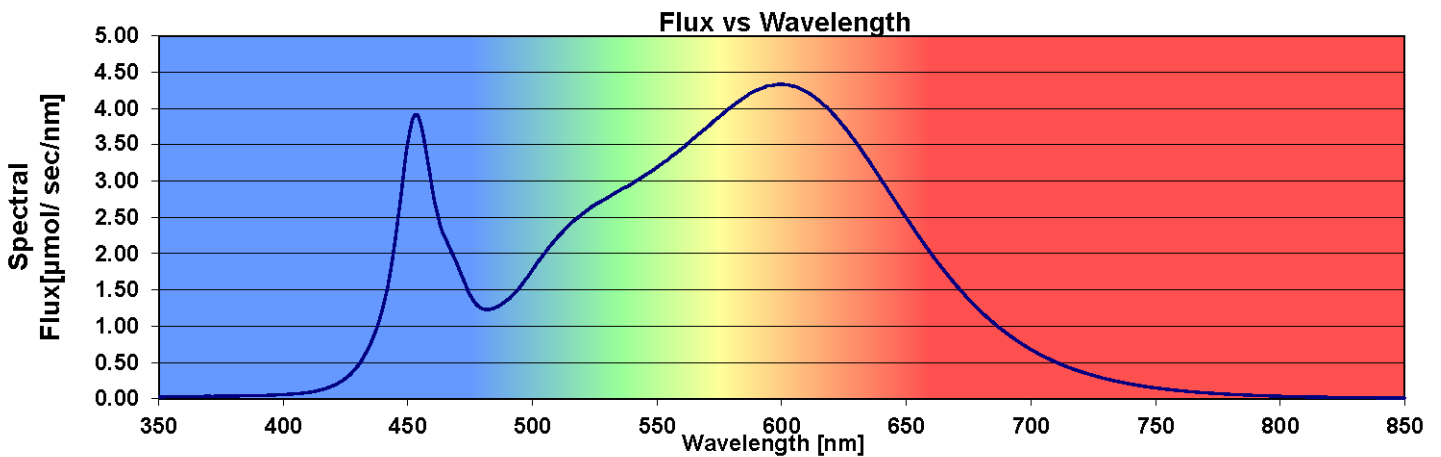
Notes: \_\_\_\_\_

# BLOOM WITH US.™

© 2022 Bloominescent LED LLC All Rights Reserved

## SPECIFICATIONS

|                             |                                      |
|-----------------------------|--------------------------------------|
| Light Source                | LED                                  |
| Spectra                     | Patented                             |
| Efficacy                    | 2.1 $\mu\text{mol}/\text{J}$         |
| PPF                         | 1216 $\mu\text{mol}$                 |
| Input Power                 | 600W MAX                             |
| Input Voltage / Current     | 120 @4.92A   240 @2.46A   277 @2.12A |
| L/W/H   Weight              | 20 / 10 / 5.5   12lbs                |
| Mounting Height             | >36 Inches                           |
| Operating Temperature       | -40°C - 40°C (-40°F - 104°F)         |
| Thermal Management          | Patented IP68 active                 |
| Dimming                     | 0-10V / PWM                          |
| Lifetime per TM21 Q70 / Q90 | 76K hrs /46K hrs                     |



Project: \_\_\_\_\_

Type: \_\_\_\_\_

Model: \_\_\_\_\_

Date: \_\_\_\_\_

Notes: \_\_\_\_\_

**BLOOM  
WITH US.™**

© 2022 Bloominescent LED LLC All Rights Reserved