



Kable Kontrol™ UV Rated Split Wire Loom Tubing

Available from 1/4" to 2"

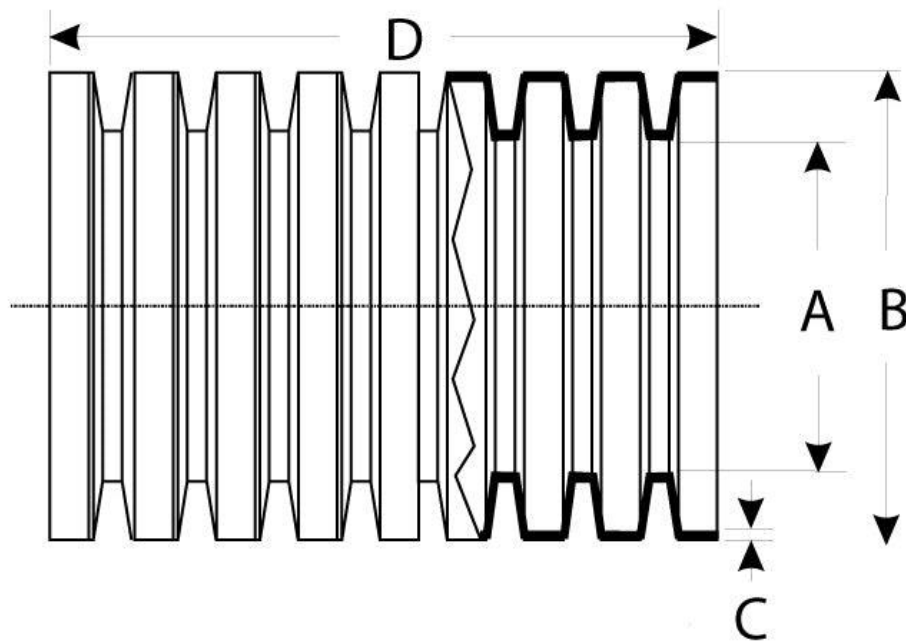
- MADE IN NORTH AMERICA
- Flexible convoluted split tubing/conduit manufactured from a nylon 6 copolymer resin and UV Inhibitor.
- All UV resistant high-temperature split loom is distinctly marked with an orange stripe running the entire length.
- Temperature range: -40° to 300° F, -40° to 149° C.
- Tested to the equivalent of 3000 hours in the desert sun
- UV inhibitor protects against discoloration and fading
- Can be used both indoors and outdoors, and also in sunlight
- Compliant with the (RoHS), REACH Directive and the Conflict Minerals Initiative
- **Note: All Lengths Will Be Shipped as continuous lengths. Lengths are NON-SPLICED**

UV Rated Split Wire Loom Tubing



Technical Specifications & Test Data

Nominal Internal Diameter	Dimension "A" Inside Diameter		Dimension "B" Outside Diameter		Dimension "C" Wall Thickness	Dimension "E" Corr. Ht. Ref.
	Min	Max	Min	Max		
1/4" (6 mm)	0.237" (6.02 mm)	0.266" (6.76 mm)	0.372" (9.45 mm)	0.400" (10.16 mm)	0.004" (0.12 mm)	0.067" (1.71 mm)
3/8" (9 mm)	0.341" (8.66 mm)	0.380" (9.65 mm)	0.496" (12.59 mm)	0.526" (13.36 mm)	0.005" (0.12 mm)	0.075" (1.91 mm)
7/16" (10 mm)	0.399" (10.13 mm)	0.437" (11.10 mm)	0.569" (14.46 mm)	0.597" (15.16mm)	0.005" (0.12 mm)	0.083" (2.10 mm)
1/2" (13 mm)	0.471" (11.97 mm)	0.515" (13.07 mm)	0.645" (16.39 mm)	0.681" (17.31 mm)	0.005" (0.12 mm)	0.085" (2.17 mm)
5/8" (16 mm)	0.603" (15.32 mm)	0.639" (16.23 mm)	0.802" (20.36 mm)	0.837" (21.26 mm)	0.005" (0.12 mm)	0.069" (2.45 mm)
3/4" (19 mm)	0.707" (17.96 mm)	0.759" (19.28 mm)	0.950" (24.13 mm)	0.989" (25.12 mm)	0.005" (0.12 mm)	0.118" (3.00 mm)
7/8" (22 mm)	0.848" (21.54 mm)	0.898" (22.81 mm)	1.107" (28.12 mm)	1.151" (29.24 mm)	0.005" (0.13 mm)	0.128" (3.25 mm)
1" (23 mm)	0.897" (22.78 mm)	0.949" (24.10 mm)	1.077" (27.36 mm)	1.109" (28.17 mm)	0.006" (0.15 mm)	0.085" (2.16 mm)
1-1/4" (30 mm)	1.199" (30.45 mm)	1.257" (31.93 mm)	1.446" (36.73 mm)	1.500" (38.10 mm)	0.006" (0.15 mm)	0.123" (3.11 mm)
1-1/2" (40 mm)	1.566" (39.78 mm)	1.647" (41.83 mm)	1.867" (47.42 mm)	1.947" (49.45 mm)	0.006" (0.15 mm)	0.150" (3.82 mm)
2" (51 mm)	1.969" (50.01 mm)	2.038" (51.77 mm)	2.285" (58.04 mm)	2.388" (60.66 mm)	0.011" (0.28 mm)	0.167" (4.23 mm)



Flexible convoluted tubing / conduit manufactured from a nylon 6 co-polymer resin and UV Inhibitor

Performance Enhancers			
Flame Retardant	No		
UV Inhibitor	Yes		
Heat Stabilizer	No		
Performance Characteristics			
Flexibility	Good		
Abrasion Resistance	Excellent		
Chemical Resistance	Good See Chemical Resistant Report: CR-012		
Recommended Operating Upper Temperature	+300°F (149°C)		
Recommended Operating Lower Temperature	-40°F (-40°C)		
Typical Physical Properties	Test Method	Value	Units
Specific Gravity/Density	ISO 1183	1.07	-
Elongation @ Break	ISO 527	70	%
Elongation @ Yield	-	-	-
Tensile Strength @ 25C	ISO 527	51	MPa
2% Secant Modulus	-	-	-
Flexural Modulus	ISO 178	1710	MPa
Melting Point	ISO 11357	424 (218)	°C
Notched Izod Impact Test	ISO 180	100	KJ/m2
Heat Deflection Temperature @66psi	-	-	-
Heat Deflection Temperature @264psi	-	-	-

RESISTANT TO AUTO FLUIDS AND CHEMICALS



Contact us:

1-877-284-7760

Mon-Thurs:

8:30AM - 5:30PM EST

Friday:

8:30AM - 5PM EST

Email: Sales@kablekontrol.com

Website: www.kablekontrol.com

KABLE KONTROL 