



## Kable Kontrol™ Non Split Corrugated Wire Loom Tubing

**Available in 1/2", 3/4" & 1" Sizes (Internal Diameter)**

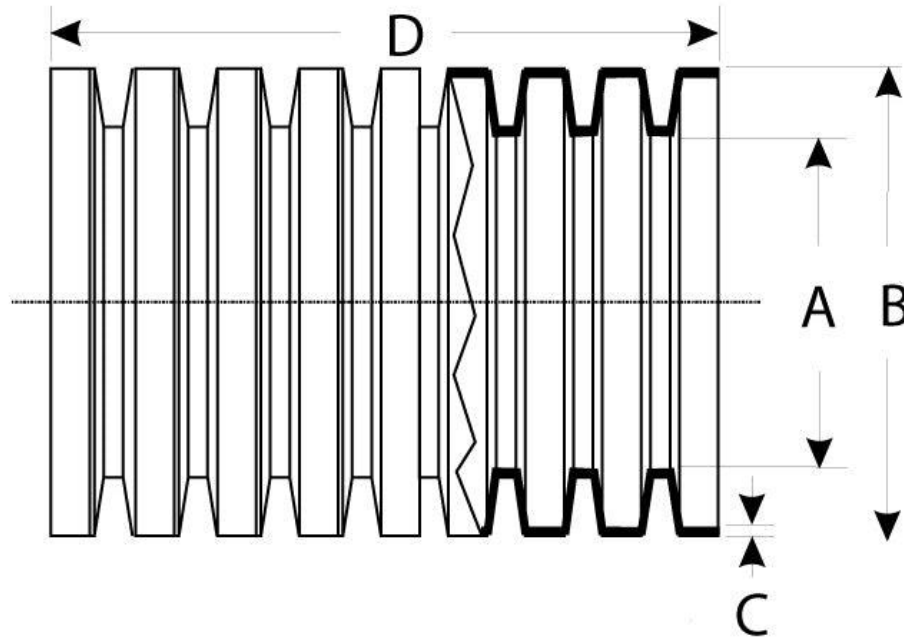
- MADE IN NORTH AMERICA
- Resistant To Auto Fluids & Chemicals
- Temperature Range -40°F To 200°F (-40°C - 93°C)
- Protection Against Abrasion, Crushing & Friction
- Made of Durable Black Polyethylene
- REACH & RoHS COMPLIANT

**NON-SPLIT WIRE LOOM**



### Technical Specifications & Test Data

Nominal Internal Diameter	Dimension "A" Inside Diameter		Dimension "B" Outside Diameter		Dimension "C" Wall Thickness
	Min	Max	Min	Max	
1/2" (13 mm)	0.471" (11.97 mm)	0.515" (13.07 mm)	0.645" (16.39 mm)	0.681" (17.31 mm)	0.005" (0.12 mm)
3/4" (19 mm)	0.707" (17.96 mm)	0.759" (19.28 mm)	0.950" (24.13 mm)	0.989" (25.12 mm)	0.005" (0.12 mm)
1" (23 mm)	0.897" (22.78 mm)	0.949" (24.10 mm)	1.077" (27.36 mm)	1.109" (28.17 mm)	0.006" (0.15 mm)



Performance Enhancers			
Flame Retardant	No		
UV Inhibitor	No		
Heat Stabilizer	No		
Performance Characteristics			
Flexibility	Excellent		
Abrasion Resistance	Good		
Chemical Resistance	Good <a href="#">See Chemical Resistant Report: CR-013</a>		
Recommended Operating Upper Temperature	+200°F (93°C)		
Recommended Operating Lower Temperature	-40°F (-40°C)		
Typical Physical Properties	Test Method	Value	Units
Specific Gravity/Density	ASTM D792	0.924	-

**DURABLE POLYETHYLENE**



**RESISTANT TO AUTO FLUIDS  
AND CHEMICALS**



# WIDE APPLICATIONS



Contact us:

1-877-284-7760

Mon-Thurs:

8:30AM - 5:30PM EST

Friday:

8:30AM - 5PM EST

Email: [Sales@kablekontrol.com](mailto:Sales@kablekontrol.com)

Website: [www.kablekontrol.com](http://www.kablekontrol.com)

