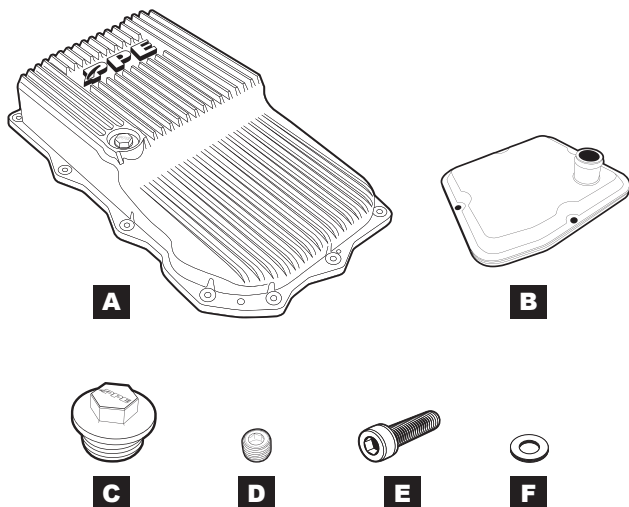


Heavy-Duty Cast Aluminum Transmission Pan

***ZF 8-Speed Transmission w/ Stamped Steel
Stock Pan***

(2281530XX, 2281534XX, 2281535XX)

Installation Guide



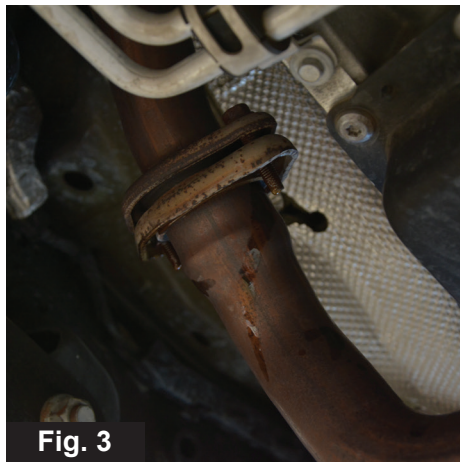
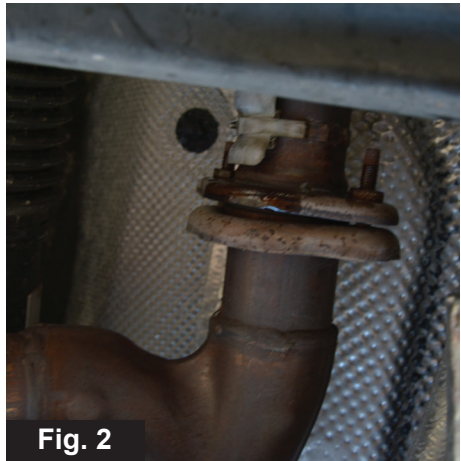
CONTENTS

- A. (1) Transmission Pan (228153000 shown above)
- B. (1) Replaceable filter (228058600 for 2281530XX. 228058700 for 2281534XX/2281535XX)
- C. (1) Magnetic Drain Plug
- D. (1) 1/8 NPT Plug
- E. (13) M6 Bolts
- F. (13) Flat Washers

INSTALLATION:

1. Vehicle off. Engine cool.
2. Remove the frame crossmember under transmission pan (**Fig. 1**).
3. **For vehicles with exhaust cross pipe (Y-pipe) underneath the transmission pan only. If not equipped with a Y-pipe, proceed to step 7.**

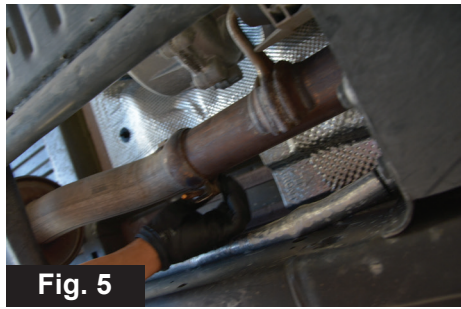
Penetrating spray the bolts on both left and right Y-pipe flanges (**Fig 2, Fig 3**).



4. Remove the penetrated bolts, disengage both left and right Y-pipe connections. **(Fig 4)**



5. Loosen the clamp on the back of the exhaust Y-pipe. **(Fig 5)**



6. Lower the Y-pipe to make more room for the installation. **(Fig 6)**



7. Remove factory transmission pan bolts. Drain transmission fluid. **(Fig 7)**



8. Remove factory transmission pan.

9. Thoroughly clean the factory transmission pan gasket. Transfer gasket to the PPE pan by engaging the alignment rubber pins with the alignment holes in the flange of the pan. **(Fig 8)**

Replace the old gasket with a new OEM gasket if needed.

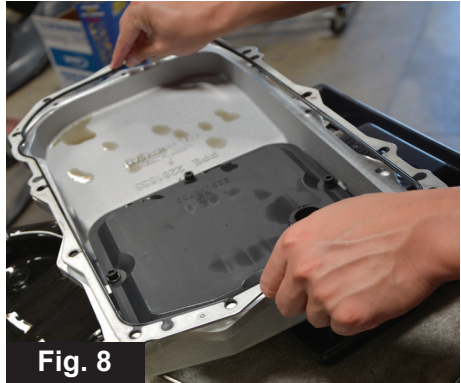


Fig. 8

10. Install the PPE pan in place. Make sure the transmission filter neck is seated in the fluid pick up tube. **(Fig 9)**
11. Install all bolt-washer assemblies to secure the pan finger-tight.



Fig. 9

12. Tighten all bolts to 10 lb-ft in a crossing pattern. **(Fig 10)**
13. **For vehicles with exhaust Y-pipe only. If not equipped, proceed to step 15.**

Apply anti-seize compound to the exhaust pipe bolts removed earlier. Reinstall the bolts.

14. Retighten the exhaust pipe clamp loosened in step 5.

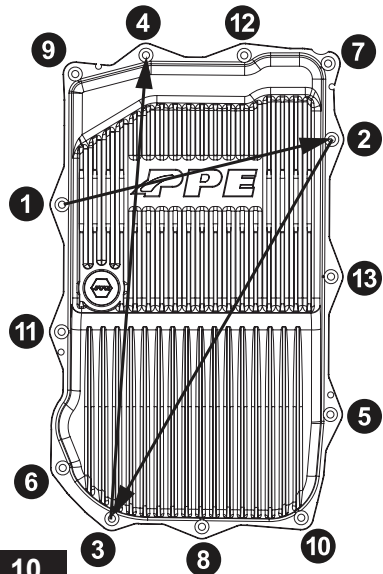


Fig. 10

15. Reinstall the frame crossmember. (Fig 11)



Fig. 11

FLUID FILLING

The following steps were performed in our test fitment on a 2022 Jeep Gladiator 3.6L. Check your Service Manual for detailed instructions.

For Reference Only

1. Park the vehicle on a level surface. Remove the fill plug on the passenger side of the transmission case. (Fig 12)
2. Utilizing a universal fluid dispenser, add manufacturer recommended fluid until it starts to come out of the fill hole.
3. Start the engine, let it idle for 30 seconds. Add more fluid until it starts to come out of the fill hole again. Reinstall the fill plug.



Fig. 12

4. With the engine running, monitor the transmission fluid temperature. Temperature must be within the 86-122°F range during steps 5-7. Allow transmission to cool down if the temperature exceeds 122°F.
5. With the gear selector in P, maintain engine speed at 2000 RPM for 30 seconds.
6. With the engine in idle, shift through P, R, N, D, L, R. Hold in each position for 10 seconds. Shift back to P.
7. Remove the transmission fill plug.
 - If fluid begins to flow out, wait until it slows to drips.
 - If no fluid comes out, add more until it starts to overflow, then wait until it slows to drips.
8. Reinstall the fill plug.

Installation Complete

DISCLAIMER OF LIABILITY

Performance products can increase horsepower above and beyond factory specifications. Additional horsepower creates more stress on the drive-train components, which could result in drive-train failure.

Note regarding emissions-related, non-E.O.-legal products: THESE PRODUCTS ARE LEGAL IN CALIFORNIA ONLY FOR RACING VEHICLES THAT MAY NEVER BE USED, OR REGISTERED OR LICENSED FOR HIGHWAY OR OFF-ROAD USE.

This agreement sets forth the terms and conditions for the use of PPE products. The installation of this product indicates that the Buyer has read and understands this agreement and accepts the terms and conditions. PPE (Pacific Performance Engineering) Inc., its distributors, employees, and dealers (the "Seller") shall not be responsible for the product's proper use and service. The buyer hereby waives all liability claims. The Buyer hereby acknowledges no reliance on the Seller's skill or judgment to select or furnish goods suitable for any particular purpose and that there are no liabilities which extend beyond the description on the face hereof, and the Buyer hereby waives all remedies or liabilities expressed or implied, arising by law or otherwise (including without any obligation of the Seller with respect to fitness, merchantability and consequential damages), or whether or not occasioned by the Seller's negligence. The Seller disclaims any warranty and expressly disclaims any liability for personal injury or damages. The Buyer acknowledges and agrees that the disclaimer of any liability for personal injury is a material term for this agreement and the Buyer agrees to indemnify the Seller and to hold the Seller harmless from any claim related to the item of equipment purchased. Under no circumstances will the Seller be liable for any damages or expenses by reason of use or sale of any such equipment. The Seller assumes no liability regarding the improper installation or misapplication of its products. It is the installer's responsibility to check for proper installation and if in doubt, contact the manufacturer. The Buyer is solely responsible for all warranty issues from the manufacturer.

LIMITATION OF WARRANTY

The Seller gives Limited Warranty as to description, quality, merchantability, and fitness for a particular purpose, productiveness, or any other matter of Seller's product sold herewith. The Seller shall not be responsible for the products proper use and service and the Buyer hereby waives all rights other than those expressly written herein. This warranty shall not be extended, altered or varied except by a written instrument signed by Seller and Buyer. The Warranty on PPE Manifolds and Up-Pipes Kits, OEM-Length Up-Pipes is three (3) years, a limited lifetime warranty on PPE cast aluminum pans and covers, and a limited lifetime warranty on PPE Transmission Coolers and one (1) year limited warranty on all other PPE products from the date of sale to original buyer and limited solely to the parts contained within the products kit. All products that are in question of Warranty must be returned prepaid to the Seller and must be accompanied by a dated proof of purchase receipt. All Warranty claims are subject to approval by Seller. Under no circumstances will the Seller be liable for any labor charged or travel time incurred in diagnosis for defects, removal, or re-installation - of this product or any other contingent expenses. Under no circumstances will the Seller be liable for any damage or expenses incurred by reason of the use or sale of any such equipment. In the event that the buyer does not agree with this agreement: the buyer may promptly return this product, in a new and unused condition in its original packaging, with a dated proof of purchase to the place of purchase within ten (10) days from date of purchase for a full refund. The installation of this product indicates that the buyer has read and understands this agreement and accepts its terms and conditions.

⚠ CA WARNING: Handling passenger or off-highway motor vehicle parts can expose you to chemicals such as phthalates and lead, which can cause cancer and reproductive harm. To minimize exposure, service the vehicle in a well-ventilated area, wear gloves, and wash your hands. For more information see www.P65Warnings.ca.gov/motor-vehicle-parts.

