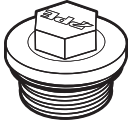


Heavy-Duty Cast Aluminum Transmission Pan WA580, W5A580, NAG1

(228053500, 228053510, 22805320)

Installation Guide

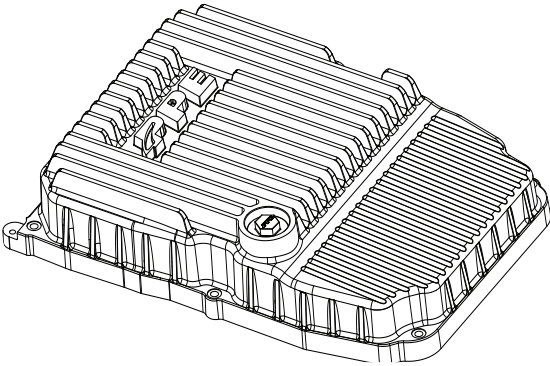
A



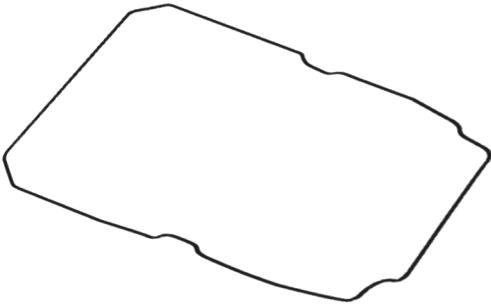
B



C



D



CONTENTS:

- A** (1) One-inch Neodymium Magnet equipped Drain Plug (installed)
- B** (1) 1/8" NPT plug (installed)
- C** (1) PPE Transmission Pan
- D** (1) Rubber seal

NOTE: Requires the use of an exhaust spacer kit or aftermarket Y pipe for 12-18 Jeep Wrangler JK's to clear bottom of transmission pan.

PREPARATION:

Step 1. Vehicle off. Engine cool.

Step 2. If using a lift position the lift points in a way you can reach bolts to the cross members and transmission skid plate.
Safety jack or lift the vehicle up. Once the vehicle is at the appropriate height place jack stands underneath for added safety.

Step 3. Remove the transfer case skid plate by removing the four bolts with a 18mm socket.

Remove the transmission skid plate by removing the three bolts with a 18mm socket.

Remove the three nuts securing the crossmember to the transmission mount with a 16mm socket.



Step 4. Support the transfer case with a jack stand. **(Fig 1)**

Fig.1

Step 5. The remove crossmember by removing the four bolts and nuts.

Remove the wire harness heat shield from the transmission pan with a 10mm socket. Set the stock bolt aside. **(Fig 2)**



Fig.2

Step 6. There is no factory drain plug. Position a fluid drain pan underneath the transmission pan. Be cautious when loosening the bolts, fluid will spill over the factory pan edge. **(Fig 3)**

Use a T30 torx to loosen the bolts on the rearward side first to allow some of the transmission fluid to drain. Partially drain the pan. Get help to level the pan then remove the remaining bolts. Use caution to prevent spillage.
Set the stock bolts aside.

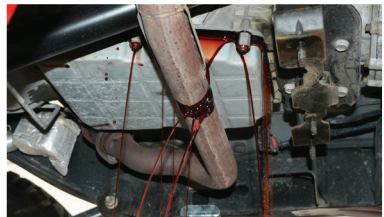


Fig.3

Install a new transmission filter if needed.

INSTALLATION:

Step 1. Clean and wipe down the mating surface on the transmission.

Step 2. Place the provided O-Ring onto the groove on the PPE Transmission Pan. Make sure that the O-Ring is completely seated in the machined groove. **(Fig 1)**



Fig.1

Step 3. Check the NPT Plug and Drain Plug. Tighten if necessary. The torque specs for the Drain Plug is 18 ft.lbs.

Step 4. Install the PPE Transmission Pan with the stock bolts with a T30 torx until finger tight.

Reconnect and tighten the heat shield to the PPE Transmission Pan with the stock bolt with a 10mm socket. **(Fig 2)**

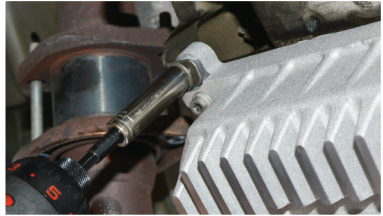


Fig.2

Step 5. Tighten bolts in a crossing pattern as shown. Torque to 8 ft. lbs./89 in.lbs.

Reinstall the crossmember and transmission skid plate. Torque to 48 ft.lbs. **(Fig 3)**

Step 6. Remove the jack stand. With the vehicle level on the floor, fill the transmission with manufacturer recommended fluid. The fill is underneath the hood on the passenger side.

Start engine. Check for leaks.

Installation is complete.

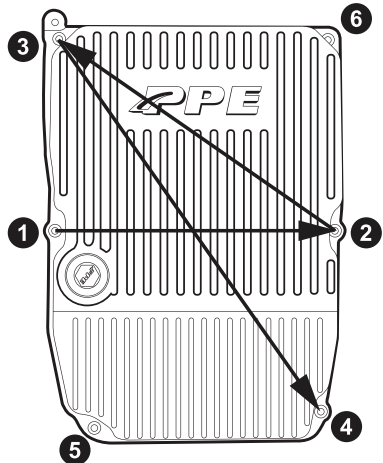


Fig.3

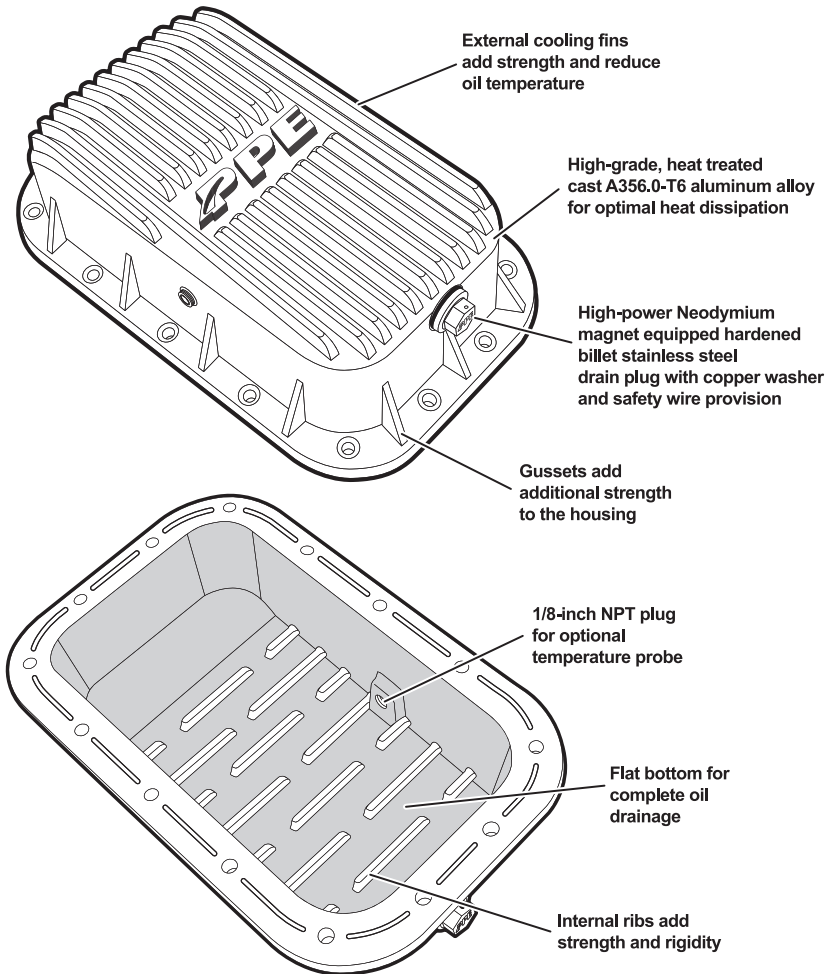


Upgrade your build.

Heavy-Duty Cast Aluminum Engine Oil Pan

Whether your factory stamped steel oil pan has become damaged, rusted, or you just want an easy bolt-on upgrade with better performance, the PPE Cast Aluminum Oil Pan is your best choice for increased strength and lower oil temps.

P/N: 214054000



DISCLAIMER OF LIABILITY

Performance products can increase horsepower above and beyond factory specifications. Additional horsepower creates more stress on the drive-train components, which could result in drive-train failure.

Note regarding emissions-related, non-E.O.-legal products: THESE PRODUCTS ARE LEGAL IN CALIFORNIA ONLY FOR RACING VEHICLES THAT MAY NEVER BE USED, OR REGISTERED OR LICENSED FOR HIGHWAY OR OFF-ROAD USE.

This agreement sets forth the terms and conditions for the use of PPE products. The installation of this product indicates that the Buyer has read and understands this agreement and accepts the terms and conditions. PPE (Pacific Performance Engineering) Inc., its distributors, employees, and dealers (the "Seller") shall not be responsible for the product's proper use and service. The buyer hereby waives all liability claims. The Buyer hereby acknowledges no reliance on the Seller's skill or judgment to select or furnish goods suitable for any particular purpose and that there are no liabilities which extend beyond the description on the face hereof, and the Buyer hereby waives all remedies or liabilities expressed or implied, arising by law or otherwise (including without any obligation of the Seller with respect to fitness, merchantability and consequential damages), or whether or not occasioned by the Seller's negligence. The Seller disclaims any warranty and expressly disclaims any liability for personal injury or damages. The Buyer acknowledges and agrees that the disclaimer of any liability for personal injury is a material term for this agreement and the Buyer agrees to indemnify the Seller and to hold the Seller harmless from any claim related to the item of equipment purchased. Under no circumstances will the Seller be liable for any damages or expenses by reason of use or sale of any such equipment. The Seller assumes no liability regarding the improper installation or misapplication of its products. It is the installer's responsibility to check for proper installation and if in doubt, contact the manufacturer. The Buyer is solely responsible for all warranty issues from the manufacturer.

LIMITATION OF WARRANTY

The Seller gives Limited Warranty as to description, quality, merchantability, and fitness for a particular purpose, productiveness, or any other matter of Seller's product sold herewith. The Seller shall not be responsible for the products proper use and service and the Buyer hereby waives all rights other than those expressly written herein. This warranty shall not be extended, altered or varied except by a written instrument signed by Seller and Buyer.

Limited lifetime warranty on all PPE cast aluminum products, and PPE Transmission Coolers. Three (3) year limited warranty on PPE Manifolds and Up-Pipes Kits, and OEM-Length Up-Pipes. One (1) year limited warranty on all other PPE products from the date of sale to original buyer and limited solely to the parts contained within the products kit. All products that are in question of Warranty must be returned prepaid to the Seller and must be accompanied by a dated proof of purchase receipt. All Warranty claims are subject to approval by Seller. Under no circumstances will the Seller be liable for any labor charged or travel time incurred in diagnosis for defects, removal, or re-installation - of this product or any other contingent expenses. Under no circumstances will the Seller be liable for any damage or expenses incurred by reason of the use or sale of any such equipment. In the event that the buyer does not agree with this agreement: the buyer may promptly return this product, in a new and unused condition in its original packaging, with a dated proof of purchase to the place of purchase within ten (10) days from date of purchase for a full refund. The installation of this product indicates that the buyer has read and understands this agreement and accepts its terms and conditions.



PPEpower.com
Phone: (725) 238-2002