

Intercooler Charge Pipe Kit - Hot Side 2004.5-2010 GM 6.6L Duramax

(115022000, 115022020 115022030)

Installation Guide



DISCLAIMER OF LIABILITY

Performance products can increase horsepower above and beyond factory specifications. Additional horsepower creates more stress on the drive-train components, which could result in drive-train failure.

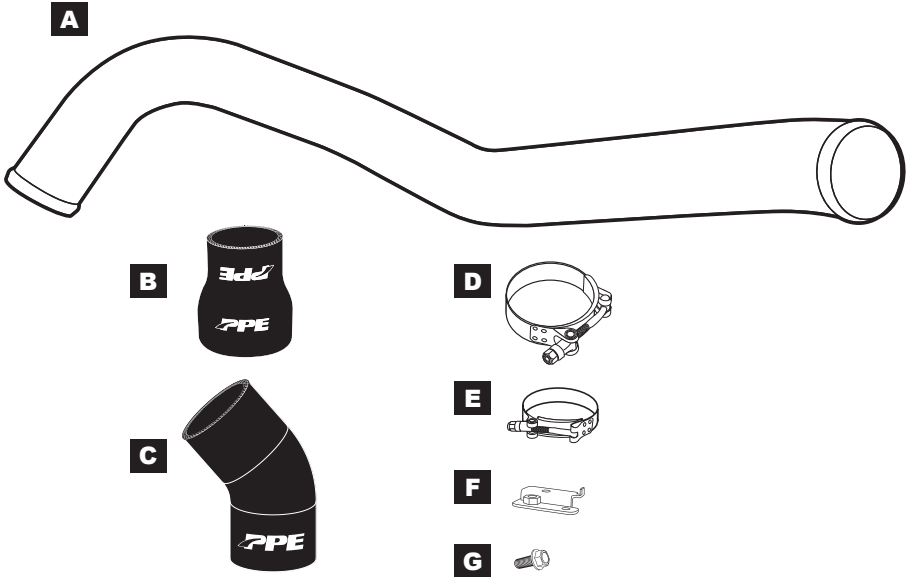
Note regarding emissions-related, non-E.O.-legal products: THESE PRODUCTS ARE LEGAL IN CALIFORNIA ONLY FOR RACING VEHICLES THAT MAY NEVER BE USED, OR REGISTERED OR LICENSED FOR HIGHWAY OR OFF-ROAD USE.

This agreement sets forth the terms and conditions for the use of PPE products. The installation of this product indicates that the Buyer has read and understands this agreement and accepts the terms and conditions. PPE (Pacific Performance Engineering) Inc., its distributors, employees, and dealers (the "Seller") shall not be responsible for the product's proper use and service. The buyer hereby waives all liability claims. The Buyer hereby acknowledges no reliance on the Seller's skill or judgment to select or furnish goods suitable for any particular purpose and that there are no liabilities which extend beyond the description on the face hereof, and the Buyer hereby waives all remedies or liabilities expressed or implied, arising by law or otherwise (including without any obligation of the Seller with respect to fitness, merchantability and consequential damages), or whether or not occasioned by the Seller's negligence. The Seller disclaims any warranty and expressly disclaims any liability for personal injury or damages. The Buyer acknowledges and agrees that the disclaimer of any liability for personal injury is a material term for this agreement and the Buyer agrees to indemnify the Seller and to hold the Seller harmless from any claim related to the item of equipment purchased. Under no circumstances will the Seller be liable for any damages or expenses by reason of use or sale of any such equipment. The Seller assumes no liability regarding the improper installation or misapplication of its products. It is the installer's responsibility to check for proper installation and if in doubt, contact the manufacturer. The Buyer is solely responsible for all warranty issues from the manufacturer.

LIMITATION OF WARRANTY

The Seller gives Limited Warranty as to description, quality, merchantability, and fitness for a particular purpose, productiveness, or any other matter of Seller's product sold herewith. The Seller shall not be responsible for the products proper use and service and the Buyer hereby waives all rights other than those expressly written herein. This warranty shall not be extended, altered or varied except by a written instrument signed by Seller and Buyer.

Limited lifetime warranty on all PPE cast aluminum products, and PPE Transmission Coolers. Three (3) year limited warranty on PPE Manifolds and Up-Pipes Kits, and OEM-Length Up-Pipes. One (1) year limited warranty on all other PPE products from the date of sale to original buyer and limited solely to the parts contained within the products kit. All products that are in question of Warranty must be returned prepaid to the Seller and must be accompanied by a dated proof of purchase receipt. All Warranty claims are subject to approval by Seller. Under no circumstances will the Seller be liable for any labor charged or travel time incurred in diagnosis for defects, removal, or re-installation - of this product or any other contingent expenses. Under no circumstances will the Seller be liable for any damage or expenses incurred by reason of the use or sale of any such equipment. In the event that the buyer does not agree with this agreement: the buyer may promptly return this product, in a new and unused condition in its original packaging, with a dated proof of purchase to the place of purchase within ten (10) days from date of purchase for a full refund. The installation of this product indicates that the buyer has read and understands this agreement and accepts its terms and conditions.



CONTENTS:

- A** (1) *Hot-Side Intercooler Charge Pipe*
- B** (1) *Silicone Reducer 3.0-inch to 2.25-inch (turbo side)*
- C** (1) *Silicone Elbow Coupler 3.0-inch to 3.0-inch (intercooler side)*
- D** (3) *3.5-inch T-Bolt Clamp 84-92mm range*
- E** (1) *2.625-inch T-Bolt Clamp 63-71mm range*
- F** (1) *Brake line relocation bracket*
- G** (1) *M8 hex head flange bolt*

FACTORY CHARGE PIPE REMOVAL

Step 1. Jack the vehicle to gain access to the fender well.

Step 2. Remove the drivers side front wheel. (Fig 1)



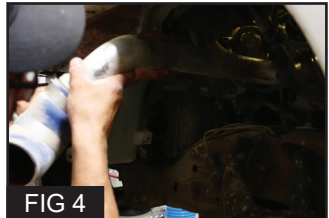
Step 3. Remove the inner fender liner by removing the plastic clips along the inside of the fender liner. (Fig 2)



Step 4. Remove the factory charge pipe by loosening the clamps at the top and bottom of the charge pipe. Pull the factory hose off the turbo outlet at the top of the engine. Pull the factory hose off of the intercooler at the bottom of the drivers fender well. (Fig 3)



Step 5. Remove the factory charge pipe by pulling it down through the fender well and out through the wheel well. (Fig 4)

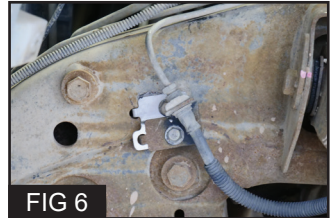


Step 6. Remove the factory brake line bracket. (Fig 5)



INSTALLATION

Step 1. Install the supplied brake line relocation bracket. (Fig 6)



Step 2. Install the supplied elbow coupler to the intercooler with the supplied clamp and tighten clamp. Use a small amount of lubricant inside edge of coupler to facilitate easier installation.



Step 3. Install the supplied silicone reducer onto the supplied charge pipe on the end without the sharp bend along with the supplied clamp. Use a small amount of lubricant inside edge of reducer to facilitate easier installation. (Fig 7)

Step 4. Guide the supplied charge pipe through the wheel well and up into the engine bay, the end of the charge pipe with the reducer attached will go through the wheel well first. (Fig 8)



Step 5. Insert the charge pipe lower end into the silicone coupler. (Fig 9)



INSTALLATION (Continued)

Step 6. Slide the silicone reducer onto the turbo outlet and secure reducer with supplied clamp. (Fig 10)

Step 7. Tighten the lower clamps on the intercooler and charge pipe.

Step 8. Check all charge pipe connections and clamps to make sure they are tight and secure.

Step 9. Reinstall the inner fender well with plastic clips removed in removal step 3.

Step 10. Reinstall the driver front wheel.

Step 11. Lower the vehicle.

Step 12 Start the vehicle and check connections for leaks.

Installation Complete.





PPEpower.com