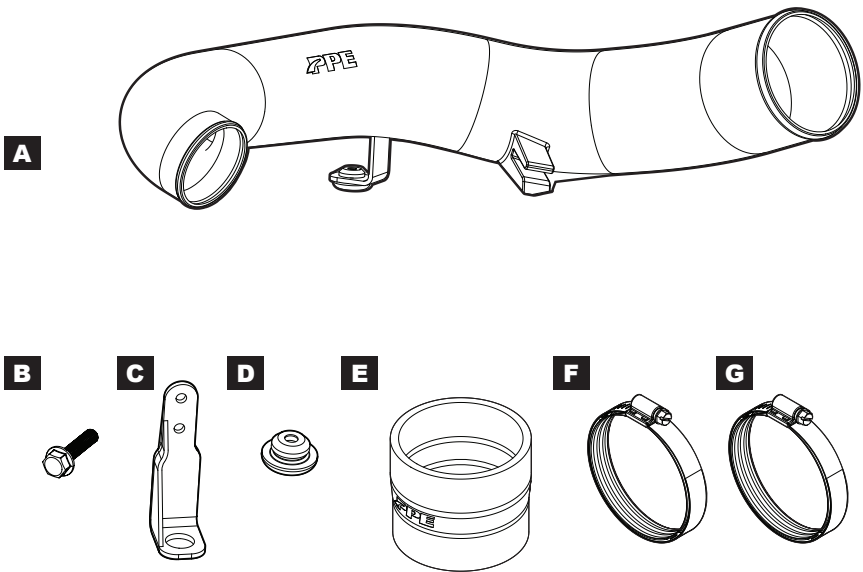


Carbon Fiber Intake Tube

*2020–2023 Chevrolet/GMC
Silverado/Sierra
3.0L Duramax*

*2021–2023 Chevrolet/GMC/Cadillac
Suburban, Tahoe/Yukon/Escalade
3.0L Duramax*

*(115020360) Weaved
(115020370) Forged*



CONTENTS

- A** (1) Intake Tube, Carbon Fiber
- B** (2) M6 - 1.0x16 Hex Bolt
- C** (1) Support Bracket
- D** (1) Rubber Grommet
- E** (1) Turbo Side Silicone Coupler
- F** (1) W - Style Worm Drive Clamp (65-89mm)
- G** (1) W - Style Worm Drive Clamp (59-83mm)

INSTALLATION

Step 1. Turn the vehicle off and allow time to cool down before installing.

Step 2. Disconnect the negative terminal from the battery. (Fig. 1)

Note: This ensures the check engine light will not be triggered.

Step 3. Remove the engine cover by first unscrewing the oil fill cap followed by the 10mm bolt. Reinstall the oil fill cap for safety. (Fig. 2)

Step 4. Disconnect the MAF sensor from the air cleaner lid. (Fig. 3)

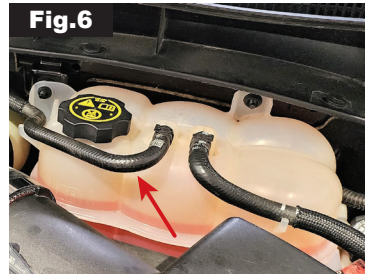
Step 5. Loosen the clamps securing the intake boot and remove the air cleaner lid and filter. (Fig. 4)

Step 6. Move the coolant reservoir for additional clearance by removing the 10mm bolt. (Fig. 5)





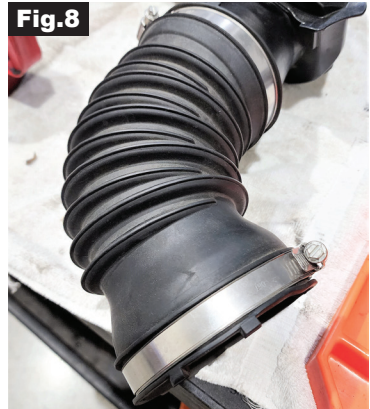
Optional: Disconnecting the hose on the left will allow further accessibility during the install. **(Fig. 6)**



Step 7. Loosen the clamp on the turbo side of the coupler. **(Fig. 7)**



Step 8. Remove the factory Air Duct from the engine bay, then detach the the air cleaner coupler. **(Fig. 8)**



Step 9. Prepare the PPE intake tube by following these steps:

1: Slide the large end of the supplied coupler **E** over the intake tube with clamp **F**. **(Fig. 9)**



2: Loosely install the second clamp **G** over the coupler. **(Fig. 10)**



3: Ensure the support bracket **C** is firmly fastened with the bolts **B**, along with the rubber grommet **D** securely in place. (Fig. 11)



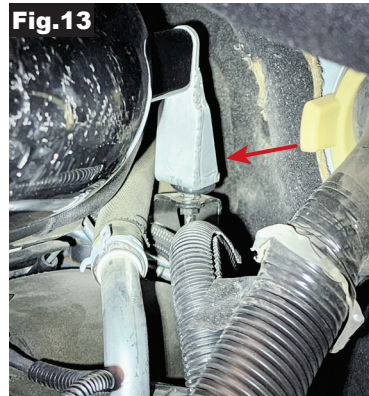
Step 10. For ease of installation, follow these steps in order after sliding the PPE intake tube into position:

1. Connect the coupler to the turbo inlet.



2. Confirm the rubber end of the mounting bracket is seated between the wide prongs on the front side of the tube. (Fig. 12)

3. Ensure the support bracket and rubber grommet is securely in place on the perch. (Fig. 13)

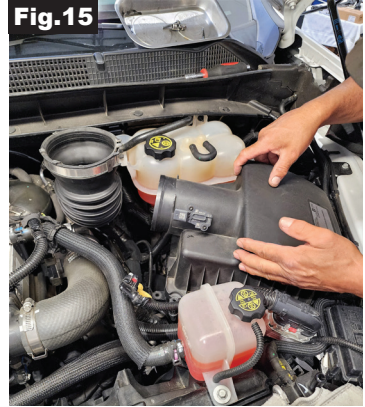


Step 11. Reinstall the coolant reservoir. (Fig. 14)





Step 12. Slide the factory coupler onto the PPE intake tube, ensuring a loose fit. Then, proceed to reinstall the air filter along with the air cleaner lid. (Fig. 15)



Step 13. Secure the coupler onto the air cleaner lid, and reconnect the MAF sensor to the factory location. (Fig. 16)



Step 14. Reconnect the battery.

Step 15. Place the supplied CARB E.O. label on a clean, visible location under the hood. PPE recommends using the top side of the fan shroud.

Installation Complete



DISCLAIMER OF LIABILITY

Performance products can increase horsepower above and beyond factory specifications. Additional horsepower creates more stress on the drive-train components, which could result in drive-train failure.

Note regarding emissions-related, non-E.O.-legal products: THESE PRODUCTS ARE LEGAL IN CALIFORNIA ONLY FOR RACING VEHICLES THAT MAY NEVER BE USED, OR REGISTERED OR LICENSED FOR HIGHWAY OR OFF-ROAD USE.

This agreement sets forth the terms and conditions for the use of PPE products. The installation of this product indicates that the Buyer has read and understands this agreement and accepts the terms and conditions. PPE (Pacific Performance Engineering) Inc., its distributors, employees, and dealers (the "Seller") shall not be responsible for the product's proper use and service. The buyer hereby waives all liability claims. The Buyer hereby acknowledges no reliance on the Seller's skill or judgment to select or furnish goods suitable for any particular purpose and that there are no liabilities which extend beyond the description on the face hereof, and the Buyer hereby waives all remedies or liabilities expressed or implied, arising by law or otherwise (including without any obligation of the Seller with respect to fitness, merchantability and consequential damages), or whether or not occasioned by the Seller's negligence. The Seller disclaims any warranty and expressly disclaims any liability for personal injury or damages. The Buyer acknowledges and agrees that the disclaimer of any liability for personal injury is a material term for this agreement and the Buyer agrees to indemnify the Seller and to hold the Seller harmless from any claim related to the item of equipment purchased. Under no circumstances will the Seller be liable for any damages or expenses by reason of use or sale of any such equipment. The Seller assumes no liability regarding the improper installation or misapplication of its products. It is the installer's responsibility to check for proper installation and if in doubt, contact the manufacturer. The Buyer is solely responsible for all warranty issues from the manufacturer.

LIMITATION OF WARRANTY

The Seller gives Limited Warranty as to description, quality, merchantability, and fitness for a particular purpose, productiveness, or any other matter of Seller's product sold herewith. The Seller shall not be responsible for the products proper use and service and the Buyer hereby waives all rights other than those expressly written herein. This warranty shall not be extended, altered or varied except by a written instrument signed by Seller and Buyer.

Limited lifetime warranty on all PPE cast aluminum products, and PPE VXZmission Coolers. Three (3) year limited warranty on PPE Manifolds and Up-Pipes Kits, and OEM-Length Up-Pipes. One (1) year limited warranty on all other PPE products from the date of sale to original buyer and limited solely to the parts contained within the products kit. All products that are in question of Warranty must be returned prepaid to the Seller and must be accompanied by a dated proof of purchase receipt. All Warranty claims are subject to approval by Seller. Under no circumstances will the Seller be liable for any labor charged or travel time incurred in diagnosis for defects, removal, or re-installation - of this product or any other contingent expenses. Under no circumstances will the Seller be liable for any damage or expenses incurred by reason of the use or sale of any such equipment. In the event that the buyer does not agree with this agreement: the buyer may promptly return this product, in a new and unused condition in its original packaging, with a dated proof of purchase to the place of purchase within ten (10) days from date of purchase for a full refund. The installation of this product indicates that the buyer has read and understands this agreement and accepts its terms and conditions.



PPEpower.com