

# Classic Shirt

Our classic shirt line provides a modern feel with the same classic look making for a great comfortable shirt that fits perfectly.

## What makes us different?

M&W Design only uses ethically sourced garments. Most fabrics are 100% Sustainable US Cotton made. With a minimum of 36 per design, we have no fees except for a multiple print fee of \$1.50. We also offer the ability to mix and match sizes with each order.

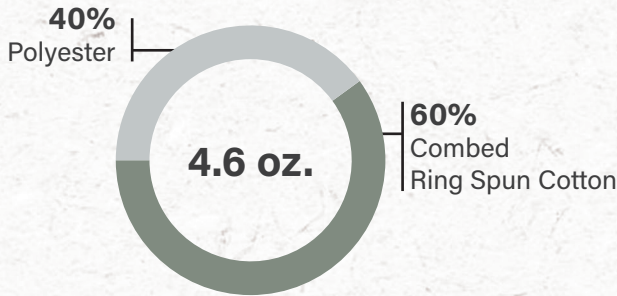
## Pricing:

\$10.00 per piece  
\$1.50 extra addition areas of printing

## At a glance:

NO Color Charge | NO Screen Charge | NO Name Drop Charge  
NO Custom Charge | NO Setup Charge | NO Charge for XXL

## Product Details:



## Sizes:

Small, Medium, Large, XLarge, 2XLarge, 3XLarge



## Sales Contact:

info@mandwdesign.com | 215.442.1506

# Classic Long Sleeve

Our classic line provides a modern feel with the same classic look making for a great comfortable shirt that fits perfectly.

### What makes us different?

M&W Design only uses ethically sourced garments. Most fabrics are 100% Sustainable US Cotton made. With a minimum of 36 per design, we have no fees except for a multiple print fee of \$1.50. We also offer the ability to mix and match sizes with each order.

### Pricing:

\$12.50 per piece  
\$1.50 extra addition areas of printing

### At a glance:

NO Color Charge | NO Screen Charge | NO Name Drop Charge  
NO Custom Charge | NO Setup Charge | NO Charge for XXL

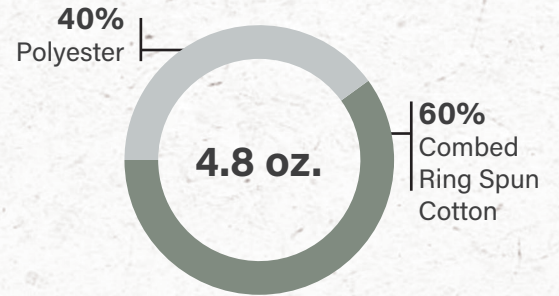


Full Front

Left Chest

Full Back

### Product Details:



### Sizes:

Small, Medium, Large, XLarge, 2XLarge, 3XLarge

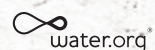
Army Heather	Black	Charcoal Heather	Forest Green
Graphite	Heather Gray	Maroon Mist	Navy
Navy Heather	Pacific Blue	Red	Red Heather
Royal	Royal Heather	Silver	White

### Sales Contact:

info@mandwdesign.com | 215.442.1506



We are committed to applying sustainable practices throughout our complete operation. From our offices to warehouses, factory to trade floor, sustainability is not just an opportunity it's a lifestyle. Know when you see this logo, you can be assured that you're receiving product from a company committed to being stubborn in sustainability.



# Classic Crewneck

Our classic line provides a modern feel with the same classic look making for a great comfortable shirt that fits perfectly.

## What makes us different?

M&W Design only uses ethically sourced garments. Most fabrics are 100% Sustainable US Cotton made. With a minimum of 36 per design, we have no fees except for a multiple print fee of \$1.50. We also offer the ability to mix and match sizes with each order.

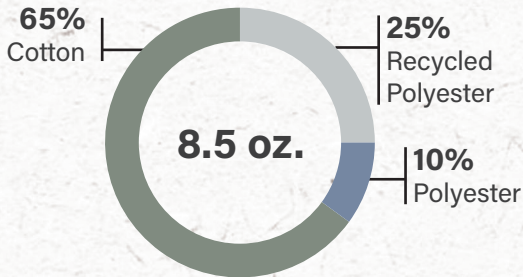
## Pricing:

\$22.00 per piece  
\$1.50 extra addition areas of printing

## At a glance:

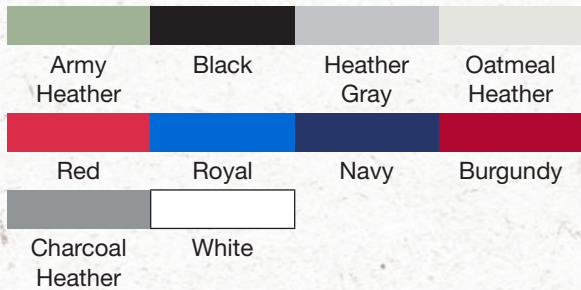
NO Color Charge | NO Screen Charge | NO Name Drop Charge  
NO Custom Charge | NO Setup Charge | NO Charge for XXL

## Product Details:



## Sizes:

Small, Medium, Large, XLarge, 2XLarge, 3XLarge



## Sales Contact:

info@mandwdesign.com | 215.442.1506

# Classic Hoodie

Our classic line provides a modern feel with the same classic look making for a great comfortable shirt that fits perfectly.

### What makes us different?

M&W Design only uses ethically sourced garments. Most fabrics are 100% Sustainable US Cotton made. With a minimum of 36 per design, we have no fees except for a multiple print fee of \$1.50. We also offer the ability to mix and match sizes with each order.

### Pricing:

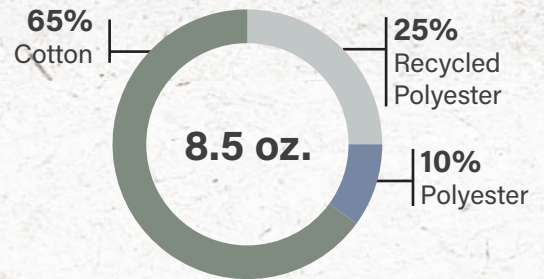
\$26.00 per piece  
\$1.50 extra addition areas of printing

### At a glance:

NO Color Charge | NO Screen Charge | NO Name Drop Charge  
NO Custom Charge | NO Setup Charge | NO Charge for XXL



### Product Details:



### Sizes:

Small, Medium, Large, XLarge, 2XLarge, 3XLarge

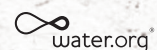
Army Heather	Black	Heather Gray	Oatmeal Heather
Red	Royal	Navy	Burgundy
Charcoal Heather	White		

### Sales Contact:

info@mandwdesign.com | 215.442.1506



We are committed to applying sustainable practices throughout our complete operation. From our offices to warehouses, factory to trade floor, sustainability is not just an opportunity it's a lifestyle. Know when you see this logo, you can be assured that you're receiving product from a company committed to being stubborn in sustainability.



## Our Norms

- Access to over 1000+ proprietary designs
- Access to in-house design consultants and artists
- Customized Spinner Programs based off market research and a free consultation
- Mix and Match sizes
- Unlimited colors in prints
- Soft Hand and extremely breathable
- Options to order hardgoods along with apparel

## Industry Norms

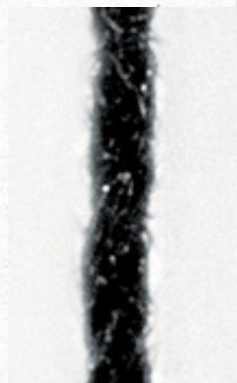
- Bad Customer Service or lack thereof
- Products not made in the USA
- Can only use their designs
- High shipping charges
- Hidden fees applied at check out
- Shirts change in price with quantity
- Unethically sourced and low quality goods

## Product's Material

Our apparel line only uses the highest quality fiber when it comes to our garments. All of our garments have been made with a ring-spun process. As you can see in the microscope samples the difference between our garments and the industry standard.

### Cotton Yarn Fiber Underneath a Microscope

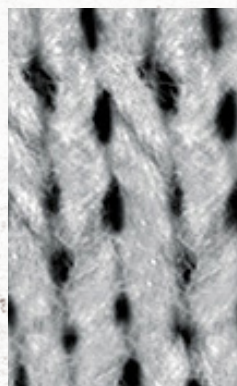
100% Combed & Ring-Spun



Carded Open

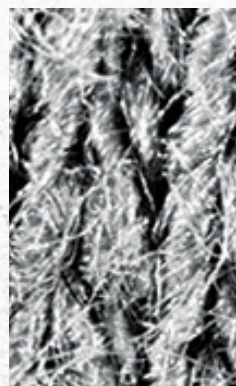


100% Combed & Ring-Spun



### Knit Zoomed in 200x

Carded Open



# SALE POLICY

---

## **Order Minimums**

Opening Order: \$200 | Reorder: \$200

## **Purchase Orders**

All P.O.'s must include the buyer's name, phone and fax number, and email address. Send Electronic Orders via your agencies order program.

Phone: 215.442.1506 | Email: info@mandwdesign.com

## **Credit**

We request and accept all major credit cards for all orders. Credit information is required to offer open terms to any account. Our terms are Net 30 unless otherwise approved by management. A credit card is to stay on file for security purposes. Should a customer want to pay by credit card at due date we can run the credit card but a 3% processing fee will be added to the bill. There is a \$25.00 service charge imposed on all returned checks. Invoices not paid within terms are subject to a 1.5% per month late fee. Accounts not current will be placed on credit hold and shipment of reorders will be delayed.

## **Shipping & Handling**

All orders are shipped FOB our warehouse in Hatboro PA, USA. Orders are generally shipped via UPS, FED EX ground, or USPS unless otherwise specified by the customer. Usual and customary shipping charges may include insurance, processing, and actual shipping costs. We do not ship COD. We have the following flat rate shipping and handling charges:

<\$500 = 12% MAX	\$500-\$1,000 = 11% MAX	\$1,000-\$1,500 = 10% MAX
\$1,500-\$2,000 = 9% MAX	\$2,000-\$2,500 = 8% MAX	\$2,500-\$3,000 = 7% MAX
\$3,000-\$3,500 = 6% MAX	ABOVE \$3,500 = 5% MAX	

(Rates apply to standard catalog items only. Special and custom products subject to full shipping/handling/crating charges.)

## **Delivery**

Allow 2-3 weeks for an initial order to be processed through credit. Credit card, pre-paid and re-orders are usually shipped within 14 days of receipt.

## **Discounts/Guarantees**

No discounts, guarantee sales, or special terms will be allowed except by vendor promotion or authorization of management.

## **Quality Control**

We reserve the right to hold product back from shipment if it does not meet our QC standards. Please allow ±5% of product to pass QC. Invoices will be adjusted based on amounts shipped.

## **Returns/Cancellations**

We accept returns on merchandise that is defective upon receipt if reported within 7 days of date of delivery. "Damaged in shipping" merchandise or display damage must be reported and photos are necessary so claims can be made with the courier. Contact customer service for a return authorization number (RA#) and write this number on the box. Please note that all products are made to order and not kept in stock. Orders can be canceled 21 days prior to due date but cancellations past 21 days will be charged full invoice amount.

## **Customer Service**

We are available Monday – Friday 8:00 am to 4:30 pm Eastern Time. For order status and information please call 215.442.1506 or email info@mandwdesign.com