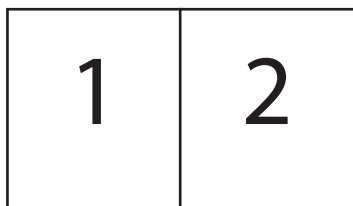
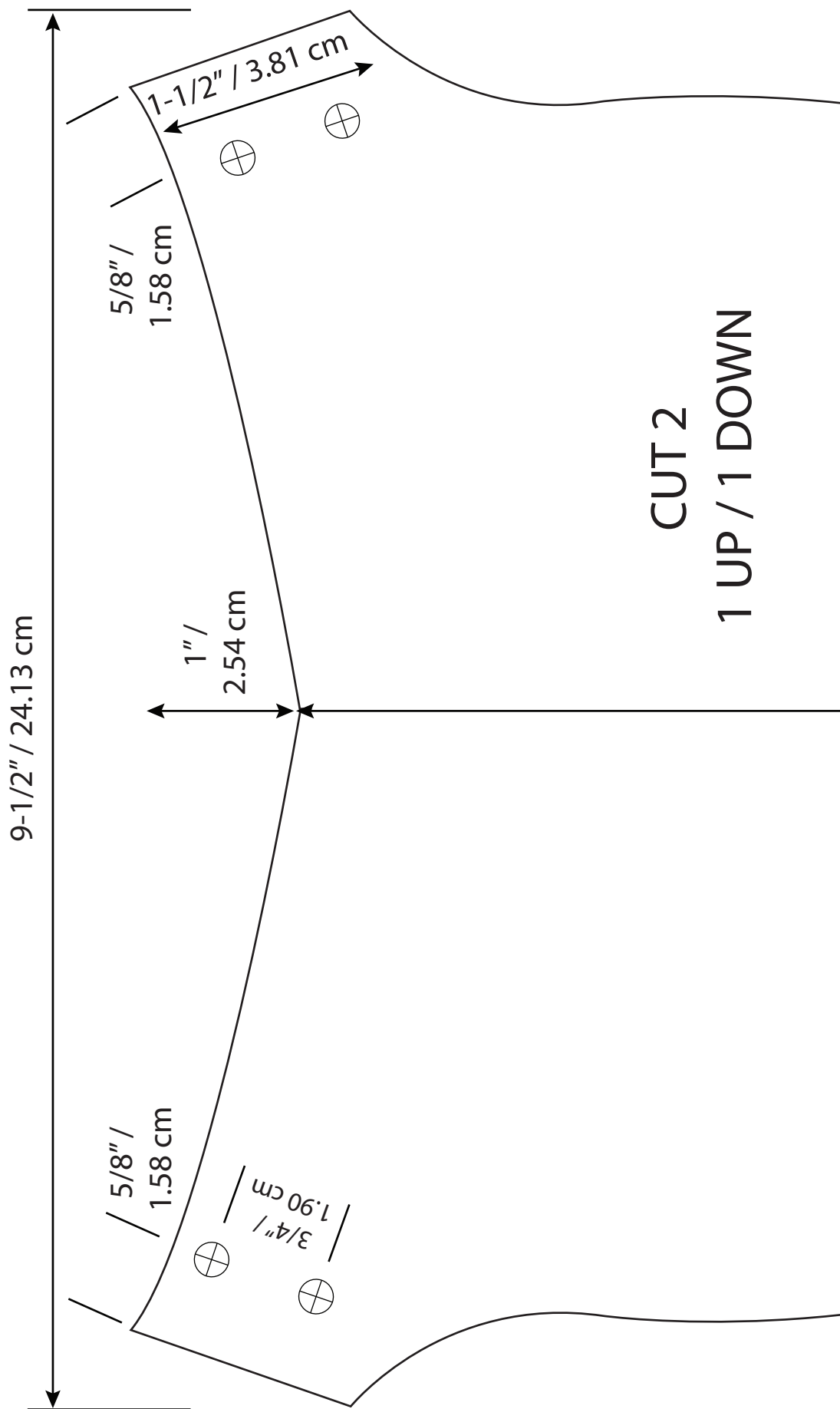


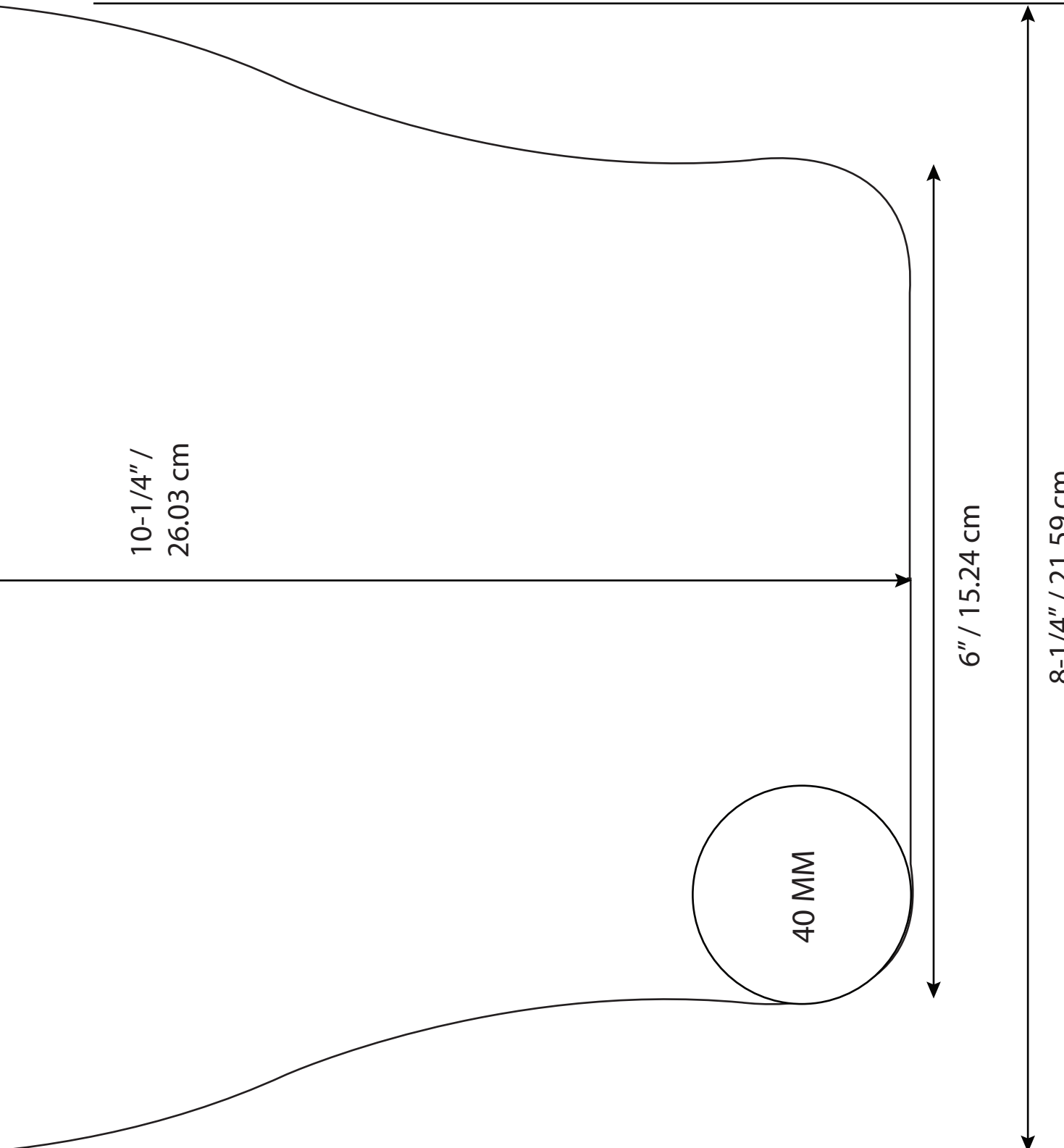
# HIP POUCH PATTERN 1

Print at 100%,  
Two 8-1/2 x 11 Pages  
Line Up End to End in this Order  
for Pattern



May have white areas between pages just  
continue line work with pencil or pen,  
do not overlap





10-1/4" /  
26.03 cm

40 MM

6" / 15.24 cm

8-1/4" / 21.59 cm