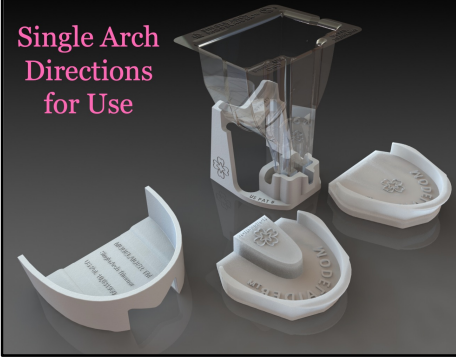


Single Arch
Directions
for Use



1. Wear personal protection equipment (PPE), disinfect impression. Remove material from the facial (1a) and bottom (1b) of tray until clear of material as shown in 1c.

2. **HS/PRO cap ONLY:** place tray in Single Arch (SA) Trimmer (2a) & remove material above the trimmer (2b).

3. Disinfect impression and tools used.

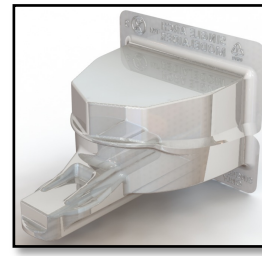
4. Roll Modelaider putty and place along the dry facial side of tray (4a) and seat into Modelaider (4b). Block out tongue with putty for mandibular impressions (4c).

5. Dip gloved finger in water and smooth putty if desired.

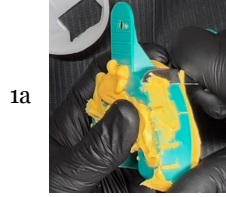
6. **HS/PRO cap ONLY:** Insert cap (6a) and seat fully into Modelaider (6b). Mix model stone and water.

7. On vibrator, add stone (7a), flow into each tooth until all are covered, fill as you turn the Modelaider vertically (7b), and place in stand (7c) until the stone is set.

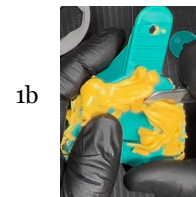
8. Wearing PPE, remove from stand, cut along bottom (8a) and remove tray. Remove cap, if used, (8b) and separate the model. Remove excess stone using the clippers (8c).



Max Ortho



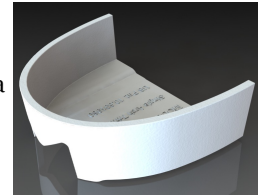
Horseshoe (HS)



Mand Ortho/Study



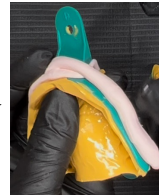
2a



2b



4a



4b



4c



6a



6b



7a



7b



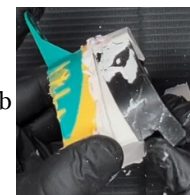
7c



8a



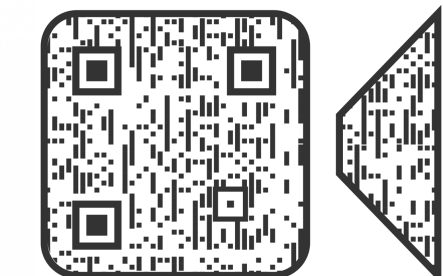
8b



8c



Single Arch Modelaider
Directions for Use



Max Ortho



Horseshoe



Mand Ortho/Study

