

COLORWORKS™ C6000 MATTE INKS DESCRIPTION

Announcement

Epson is expanding its range of on-demand color label printing with the introduction of ColorWorks C6000 series printers with matte black inks. The result of Epson proprietary ink innovations, this new matte black ink creates crisp, sharp black text and images on matte label media.

| MODEL | Previous SKU (Obsolete) | New SKU (Gloss) | New SKU (Matte) |
|------------------------------------|-------------------------|-----------------|-----------------|
| CW-C6000A 4" printer w/ autocutter | C31CH76101 | C31CH76A9991 | C31CH76A9981 |
| CW-C6000P 4" printer w/ peeler | C31CH76201 | C31CH76A9971 | C31CH76A9961 |
| CW-C6500A 8" printer w/ autocutter | C31CH77101 | C31CH77A9991 | C31CH77A9981 |
| CW-C6500P 8" printer w/ peeler | C31CH77201 | C31CH77A9971 | C31CH77A9961 |
| SJIC35P 6000/6500 black ink | n/a | C13T44B120 | C13T44B520 |

No change in pricing.

Gloss vs. Matte Comparison

Both the gloss black and matte black inks are highly durable pigment-based inks. Both have been BS5609 certified¹. The matte black ink offers a darker black on matte media and a richer image on plain media. The gloss black ink, similar to the C7500G inks, is able to print on a wider variety of substrates. The same cyan, magenta, and yellow inks are used with both blacks.

Product Application

The gloss black ink supports the widest range of media.

| Media | Gloss black ink SJIC35P(BK) UltraChrome® DL | Matte black ink SJIC35P(MK) UltraChrome DL |
|-------------------------------|--|--|
| Plain paper – uncoated | Good image | Richer image – darker black |
| Matte paper – coated | Good image | Richer image – darker black |
| Matte synthetic – coated | Good image, BS5609 certified ¹ | Richer image – darker black, BS5609 certified ¹ |
| Textured paper | Good image | Richer image – darker black |
| Low gloss paper – coated | Excellent image | Good image |
| Semi-gloss paper – coated | Excellent image | Not recommended |
| High gloss paper – coated | Excellent image | Not recommended |
| High gloss synthetic – coated | Excellent image | Not recommended |

Technical Details

The primary difference is the size of the pigment particles. Glossy media has a slick surface which has extra fine pores. For proper adhesion, the pigment particles must be especially small to penetrate the surface and achieve proper bonding. Unfortunately, this same characteristic results in the pigment settling extra deep into matte surfaces. This causes the image to appear slightly muted; especially for

black. The matte black ink has larger pigment particles which remain closer to the surface yielding a more vibrant image on matte materials. Unfortunately, this larger particle struggles to bond to the fine pore glossy surface, resulting in insufficient drying and image durability. It is important to note that the gloss black ink on matte media creates a good image and is acceptable in most circumstances. Ink safety data sheets can be found on the Epson.com support page for each printer.

Ordering Process

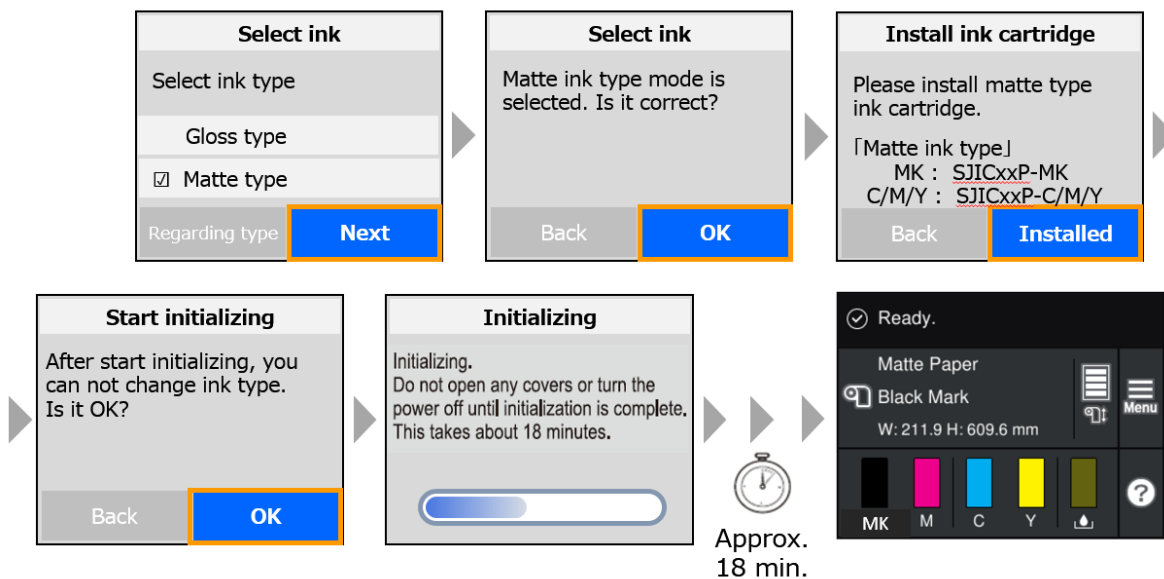
- 1) Order is placed for the desired printer model and specifying matte or gloss, e.g. **C6000A matte**.
 - *Side note: It is strongly recommended to order an extra set of ink and maintenance box with the printer, because a significant amount of ink is used during the one-time printer initialization process.*

| MODEL | Previous SKU (Obsolete) | New SKU (Gloss) | New SKU (Matte) |
|------------------------------------|-------------------------|-----------------|-----------------|
| CW-C6000A 4" printer w/ autocutter | C31CH76101 | C31CH76A9991 | C31CH76A9981 |
| CW-C6000P 4" printer w/ peeler | C31CH76201 | C31CH76A9971 | C31CH76A9961 |
| CW-C6500A 8" printer w/ autocutter | C31CH77101 | C31CH77A9991 | C31CH77A9981 |
| CW-C6500P 8" printer w/ peeler | C31CH77201 | C31CH77A9971 | C31CH77A9961 |
| SJIC35P 6000/6500 black ink | n/a | C13T44B120 | C13T44B520 |

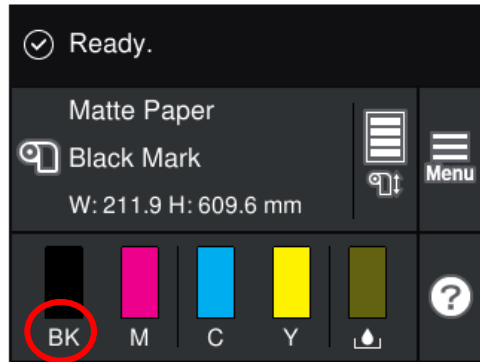
- 2) For ongoing ink replenishment, place orders for gloss black or matte black ink. CMY inks are the same for both versions.

Initialization Process

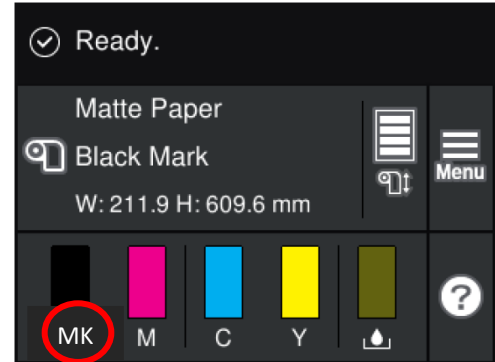
To set up a printer to use matte black ink, follow these steps when the printer is turned on for the first time:



Note that the front panel will show whether the printer is set up using gloss black ink or matte black ink:



Gloss black



Matte black

To help prevent user error, the gloss and matte black inks are keyed differently, so the printer will flag the user with an error message if the wrong cartridge is installed.

Conversion

Once gloss or matte black ink is selected during printer initialization, it cannot be changed. Therefore, it is very important that the end user decides upfront which printer model and ink is most suited for their application.

For existing printers sold prior to this announcement:

- If the printer has been initialized and the ink charging is done, it is permanently set up to use gloss ink.
- If the printer has never been taken out of the box and a matte printer is desired, then contact your distributor to request an exchange.

Recommended Printer

If it is known that ALL media to be printed on is matte, the matte printer & ink is the best choice.

If printing is required on glossy materials, even if only occasionally, the gloss printer & ink is recommended. If the range of applications is not certain, the gloss printer & ink is recommended. Both inks have BS5609 certification, so that is not a factor.

¹ Requires BS5609-certified label material for use with printer and ink system.