
Wireless LAN Cable Set

OT-WL06

Standard

Product Specification

Rev. G

P Planning & Design Department
Printing Solutions Div.
Seiko Epson Corporation

Trademarks

EPSON is a registered trademark of Seiko Epson Corporation.

Exceed Your Vision is a registered trademark of Seiko Epson Corporation.

Wi-Fi[®], WPA[™], WPA2[™] and WPA3[™] are either registered trademarks or trademarks of Wi-Fi Alliance[®].

All other trademarks are the property of their respective owners and used for identification purpose only.

OUTLINE

(1) **Scope of this document**

This specification applies to the OT-WL06 optional wireless LAN cable set for Epson printers.

(2) **Product features**

This product has the following features to allow wireless LAN communication functions for printers:

- Compliance with IEEE 802.11a/b/g/n/ac (Wi-Fi 5) wireless communication standards
- Extension cable (1 m {39.37"}) for installation according to the radio wave conditions at the customer's installation site
- Rubber cover to protect the connection between the wireless LAN unit and the extension cable

TABLE OF CONTENTS

Trademarks	2
OUTLINE	3
(1) Scope of this document	3
(2) Product features	3
TABLE OF CONTENTS	4
1 GENERAL SPECIFICATIONS	5
1.1 Wireless LAN Unit Specifications	5
1.2 Electrical Characteristics	5
1.3 Applicable Printers, Wi-Fi Certification IDs and WPA3 support	5
1.4 Countries and regions where this product can be used	6
1.5 Connection Specifications	7
1.6 Installation Specifications	7
1.6.1 Installation environment	7
1.7 Precautions for Use	8
1.7.1 Regulations stipulated in the Radio Act	8
1.7.2 Cautions regarding wireless LAN security	8
1.7.3 Cautions regarding SSID (Service Set Identifier)	8
1.7.4 Cautions regarding encryption key settings	8
1.8 Environmental Conditions	8
2 CONFIGURATION	9
2.1 Interfaces	9
2.2 Installation	9
3 FUNCTIONS	10
4 CASE SPECIFICATIONS AND ACCESSORIES	11
4.1 External Dimensions	11
4.2 Labels	11
4.3 External Appearance	11
4.4 Accessories	11
Appendix A Frequency Bands	12
Appendix B Comparison between OT-WL05 and OT-WL06	14
REVISION SHEET (Summary)	15
REVISION SHEET (Detail)	16

1 GENERAL SPECIFICATIONS

1.1 Wireless LAN Unit Specifications

- (1) Certified model name
M359A
- (2) Wireless LAN standard
IEEE802.11a/b/g/n/ac (Wi-Fi 5)
- (3) Frequency band
2.4 or 5 GHz frequency band
See Appendix A for details.
- (4) Interface
Hi-Speed USB (VID: 04B8h, PID: 0537h)

1.2 Electrical Characteristics

- (1) Rated input voltage
DC +5 V
- (2) Rated current
0.5 A (maximum)

1.3 Applicable Printers, Wi-Fi Certification IDs and WPA3 support

The applicable printers are listed below.

OT-WL06 Wi-Fi CID	Printer		WPA3 support
	Model Name	Wi-Fi CID	
WFA83127	TM-m30	WFA90550	No
	TM-T88VI	WFA90551	No
	TM-T20III / TM-T82III	WFA83755	No
	UB-E04	WFA91253	No
	TM-H6000V	WFA91528	No
	TM-m10	WFA91943	No
	TM-m30II	WFA94368	No
	TM-m30II-H	WFA94366	No
	TM-m50	WFA94365	No
	TM-m30II-S/SL	WFA96827	No
	TM-L100	WFA114636	No
WFA101745	TM-T88VII	WFA111506	Yes
	CW-C4000 series	WFA111911	Yes

1.4 Countries and regions where this product can be used

Due to restriction by radio laws, etc., the countries and regions where this product can be used are limited to the following by region. See Appendix A for the usable frequency bands.

Model	Countries and regions can be used
C32C891321	USA, Canada
C32C891322	Japan
C32C891323	Austria, Belgium, Bulgaria, Croatia, Cyprus, Czech Republic, Denmark, Estonia, Finland, France, Germany, Greece, Hungary, Iceland, Ireland, Italy, Latvia, Liechtenstein, Lithuania, Luxemburg, Malta, Netherlands, Norway, Poland, Portugal, Romania, Slovak Republic, Slovenia, Spain, Sweden, Switzerland, Turkey, UK, Hong Kong
C32C891324	Australia, New Zealand
C32C891325	China
C32C891326	Argentina, Costa Rica, Colombia, Brazil, Mexico, Chile, Peru
C32C891327	Kenya, South Africa, Kazakhstan, Belarus, Russia, Israel, UAE, Egypt, Saudi Arabia
C32C891328	India, Indonesia, Korea, Malaysia, Philippines, Singapore, Thailand, Vietnam
C32C891329	Korea

Note: Do not use this product outside the above countries and regions where it can be used. Using this product in a country or region other than the above may infringe the radio law of that country or region and subject to legal penalties. Connect this product only to the applicable printer for the country or region where it can be used.

1.5 Connection Specifications

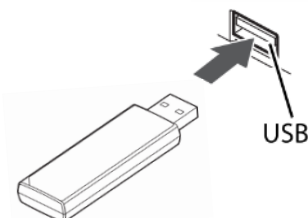
There are the following two ways to install the wireless LAN unit on the printer:

- Inserting it directly into a USB port on the printer
- Using a USB extension cable

Note: Be sure the printer's power is off when doing so.

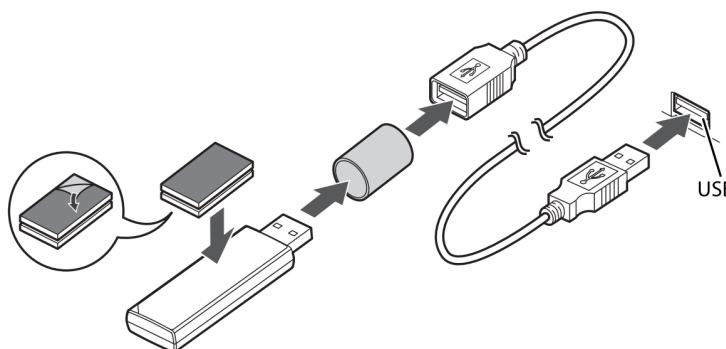
(1) Inserting directly into a USB port on the printer

Insert the wireless LAN unit all the way into a USB downstream port connector (Type A) on the printer.



(2) Using a USB extension cable

If directly inserting this product into the printer causes interference with other cables or causes poor transmission, use the USB extension cable and the rubber cover for protection, apply the included affixing tape, and install it in a location with good transmission.



Note: When detaching the affixed wireless LAN unit, be sure to hold the unit itself. Do not detach it by pulling the USB extension cable.

1.6 Installation Specifications

1.6.1 Installation environment

Observe the following during installation:

- This device can cause electromagnetic interference and malfunctions in medical equipment. Do not use it in close proximity to medical equipment or persons with pacemakers.
- Maintain a distance of at least 20 cm {7.87"} from antennas and people to keep the effects of electromagnetic wave exposure to a minimum, as indicated in guidelines for protection against radio waves.
- Do not leave this device in areas with high temperature and/or humidity. Prolonged exposure to direct sunlight or abnormally high temperature could cause failure and deformation.
- Protect this device from exposure to water.
- Do not use this device near microwave ovens. Electromagnetic interference generated by microwave ovens might prevent correct wireless communication.

1.7 Precautions for Use

1.7.1 Regulations stipulated in the Radio Act

The Radio Act prohibits the following actions:

- Modification and disassembly (including the antenna)
- Removal of conformance certification labels

1.7.2 Cautions regarding wireless LAN security

Wireless LAN uses radio waves instead of LAN cable to transmit data. This provides the advantage of uninhibited LAN connection while within range of these radio waves.

However, these radio waves can pass through physical barriers (such as walls) to reach all areas within range. Therefore, unless proper security measures are taken, the following types of problems can occur:

- A malicious third party can deliberately intercept radio waves to access transmitted data. In such cases, personal information such as IDs, passwords, and credit card numbers and other transmitted data such as the content of email are exposed to theft.
- A malicious third party can obtain unauthorized access to private and corporate networks, and do any of the following:
 - Access personal and confidential data (information leakage)
 - Manipulate communications and data using the identity of another person (identity theft)
 - Modify the content of intercepted transmissions (falsification)
 - Destroy data and breach systems with computer viruses (vandalism)

Wireless LAN cards and wireless access points are equipped with security features to handle such problems. Epson recommends that users make their own determination regarding what security measures are required when using this product and take responsibility for their implementation, with a full understanding of what problems can occur if such measures are not implemented.

1.7.3 Cautions regarding SSID (Service Set Identifier)

Observe the following when making SSID settings for security.

- Change the default SSID settings
- Set SSID to a character string that will not identify the owner.

1.7.4 Cautions regarding encryption key settings

Observe the following when using encryption keys for security.

- Do not use words found in dictionaries
- Use a combination of meaningless alphanumeric characters and symbols.
- Use strings of at least 13 characters in length, and 20 or more characters when possible.

1.8 Environmental Conditions

(1) Temperature

Operating:

0 to 45°C {32 to 113°F}

Storage:

-20 to 70°C {-4 to 158°F}

(2) Humidity

Operating:

20 to 80% RH

Storage:

5 to 85% RH

2 CONFIGURATION

2.1 Interfaces

Connector:

USB (Type A)

Cable:

Extension cable set Length: approximately 1 m {39.37"} (Hi-Speed USB compliant)

Note: Do not extend the connection cable further.

2.2 Installation

See section 1.6

3 FUNCTIONS

- Compatible devices

This product can connect to the following IEEE802.11a/b/g/n/ac (Wi-Fi 5) compliant devices:

- Computers with built-in wireless LAN functionality
- Access points

However, the transmission modes that can be used are limited, depending on the specifications of the device to which this product connects.

Wireless LAN Devices to connect with this product must be certificated in the country or region to be used.

- Compatible security types

- WPA-PSK
- WPA2-PSK
- WPA2-Enterprise
- WPA3-SAE
- WPA3-Enterprise

- You can check the network connection by printing the status sheet from the printer.

4 CASE SPECIFICATIONS AND ACCESSORIES

4.1 External Dimensions

Wireless LAN unit

Height: Approximately 65 mm {2.60"}

Width: Approximately 20 mm {0.79"}

Depth: Approximately 8 mm {0.31"}

USB extension cable

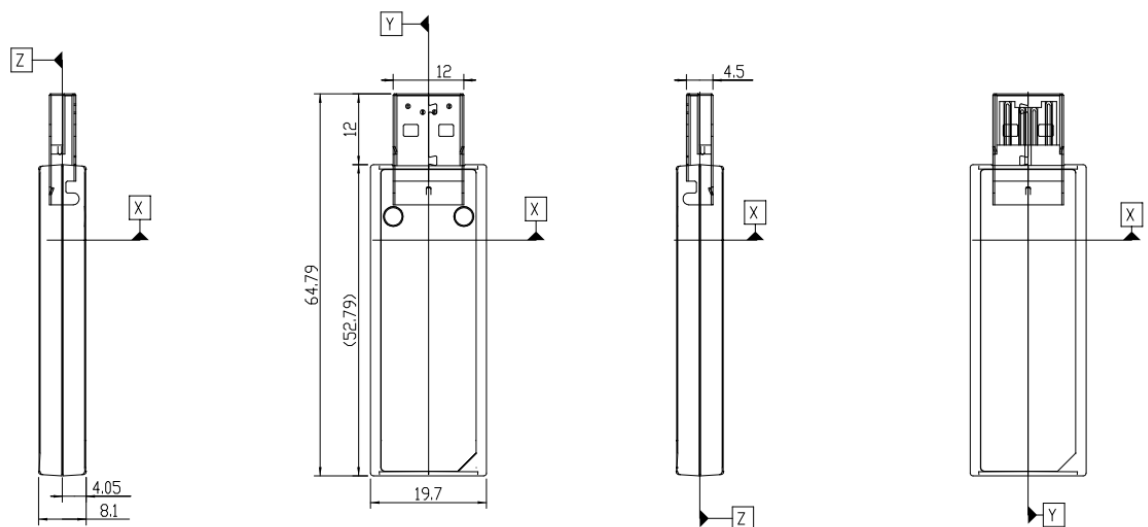
Length: Approximately 1 m {39.37"}

4.2 Labels

[Model common label]



4.3 External Appearance



4.4 Accessories

This product includes the following items:

- Wireless LAN unit
- USB extension cable
- Affixing tape (2 sheets)
- Rubber cover
- User's manual

Appendix A Frequency Bands

Y: Usable, Y(P): Usable (Passive scan), N: Not usable

2.4 GHz band

Channel	Freq. [MHz]	Model	
		C32C891321 C32C891326	C32C891322 C32C891323 C32C891324 C32C891325 C32C891327 C32C891328 C32C891329
1	2412	Y	Y
2	2417	Y	Y
3	2422	Y	Y
4	2427	Y	Y
5	2432	Y	Y
6	2437	Y	Y
7	2442	Y	Y
8	2447	Y	Y
9	2452	Y	Y
10	2457	Y	Y
11	2462	Y	Y
12	2467	N	Y
13	2472	N	Y
14	2484	N	N

5 GHz band

Channel		Freq. [MHz]	Model							
			C32C891 321	C32C891 322 C32C891 323	C32C891 324	C32C891 325	C32C891 326	C32C891 327	C32C891 328	C32C891 329
W52	36	5180	Y	Y	Y	Y	Y	Y	N	Y
	40	5200	Y	Y	Y	Y	Y	Y	N	Y
	44	5220	Y	Y	Y	Y	Y	Y	N	Y
	48	5240	Y	Y	Y	Y	Y	Y	N	Y
W53	52	5260	Y(P)	Y(P)	Y(P)	Y(P)	Y(P)	Y(P)	N	Y(P)
	56	5280	Y(P)	Y(P)	Y(P)	Y(P)	Y(P)	Y(P)	N	Y(P)
	60	5300	Y(P)	Y(P)	Y(P)	Y(P)	Y(P)	Y(P)	N	Y(P)
	64	5320	Y(P)	Y(P)	Y(P)	Y(P)	Y(P)	Y(P)	N	Y(P)
W56	100	5500	Y(P)	Y(P)	Y(P)	N	Y(P)	N	N	Y(P)
	104	5520	Y(P)	Y(P)	Y(P)	N	Y(P)	N	N	Y(P)
	108	5540	Y(P)	Y(P)	Y(P)	N	Y(P)	N	N	Y(P)
	112	5560	Y(P)	Y(P)	Y(P)	N	Y(P)	N	N	Y(P)
	116	5580	Y(P)	Y(P)	Y(P)	N	Y(P)	N	N	Y(P)
	120	5600	N	Y(P)	N	N	N	N	N	Y(P)
	124	5620	N	Y(P)	N	N	N	N	N	Y(P)
	128	5640	N	Y(P)	N	N	N	N	N	Y(P)
	132	5660	Y(P)	Y(P)	Y(P)	N	Y(P)	N	N	Y(P)
	136	5680	Y(P)	Y(P)	Y(P)	N	Y(P)	N	N	Y(P)
	140	5700	Y(P)	Y(P)	Y(P)	N	Y(P)	N	N	Y(P)
W58	149	5745	Y	N	N	Y	Y	N	N	Y
	153	5765	Y	N	N	Y	Y	N	N	Y
	157	5785	Y	N	N	Y	Y	N	N	Y
	161	5805	Y	N	N	Y	Y	N	N	Y
	165	5825	Y	N	N	Y	N	N	N	Y

Bands prohibited from outside use (Indicated by × below):

Country and region	Channel	W52	W53	2.4 GHz 1–13 ch
USA, Costa Rica, Kazakhstan, Belarus, Russia, Israel, Egypt		-	-	-
Canada, New Zealand, Mexico, Colombia, Peru		×	-	-
Austria, Belgium, Bulgaria, Croatia, Cyprus, Czech Republic, Denmark, Estonia, Finland, France, Germany, Greece, Hong Kong, Hungary, Iceland, Ireland, Italy, Latvia, Liechtenstein, Lithuania, Luxemburg, Malta, Netherlands, Norway, Poland, Portugal, Romania, Slovak Republic, Slovenia, Spain, Sweden, Switzerland, Turkey, UK, Australia, Argentina, Brazil, Chile, China, Japan, South Africa, UAE, Saudi Arabia		×	×	-
Kenya		×	×	×
India, Indonesia, Korea, Malaysia, Philippines, Singapore, Thailand, Vietnam		-	-	-

Note: The frequency bands that can be used vary by region. The above unit specifications vary depending on the combination with a printer for a region. (This depends on the firmware downloaded to the wireless LAN unit via USB when the power is turned on.)

Appendix B Comparison between OT-WL05 and OT-WL06

	OT-WL05	OT-WL06
Model number	1 model for all sales area	model for each sales area
External dimensions	67 × 20 × 10 mm	65 × 20 × 8 mm
Wireless LAN standard	IEEE 802.11 a/b/g/n (Wi-Fi 4)	IEEE 802.11 a/b/g/n/ac (Wi-Fi 5)
Ad-hoc mode	supported	not supported
WEP	supported	not supported
WPA3	not supported	supported (Depend on printer)

REVISION SHEET (Summary)

Revision	Summary
A	Enactment
B	Added Wi-Fi certification ID.
C	Added Wi-Fi certification ID.
D	Added Wi-Fi certification ID.
E	Added Wi-Fi certification ID.
F	Added Wi-Fi certification ID and WPA3 support Added Sales countries
G	Added 329 model

REVISION SHEET (Detail)

Revision	Subject	Detail
A	All	Newly enacted
B	1.3 Applicable TM Printers and Wi-Fi Certification IDs	Added Wi-Fi certification ID combined with TM-m30, TM-T88VI and UB-E04.
C	1.3 Applicable TM Printers and Wi-Fi Certification IDs	Added Wi-Fi certification ID combined with TM-H6000V.
D	1.3 Applicable TM Printers and Wi-Fi Certification IDs	Added Wi-Fi certification ID combined with TM-m10.
E	1.3 Applicable TM Printers and Wi-Fi Certification IDs	Added Wi-Fi certification ID combined with TM-m30II, TM-m30II-H and TM-m50.
F	1.3 Applicable Printers, Wi-Fi Certification IDs and WPA3 support	Added Wi-Fi certification ID combined with TM-m30II-S/SL, TM-L100, TM-T88VII and CW-C4000 series. Added WPA3 support
	1.4 Countries and regions where this product can be used Appendix A Frequency Bands	Added Chile, Peru, Saudi Arabia, and Vietnam
	3 FUNCTIONS Appendix B Comparison between OT-WL05 and OT-WL06	Added WPA3 support
G	1.4 Countries and regions where this product can be used Appendix A Frequency Bands	Added 329 model