



**Water Engineering in Motion**

[sales@kgnpillinger.com](mailto:sales@kgnpillinger.com)

tel. 0208 681 0097

ProductDataSheet



## Booster Sets

## CAT5/CAB Washdown Booster Set

The KGN Pillinger CAT 5 Washdown Booster Set is designed to prevent backflow contamination of the mains water supply, while maintaining flow and pressure. The unit is compact, lightweight, and housed in a stainless steel cabinet for easy wall mounting.

### Advantages

- Automatic operation
- Simple to wall or floor mount and install
- Easy access and maintenance

### Design

Single diaphragm pump and water storage tank housed in a compact stainless steel cabinet.

1 outlet connection only

5 metre hose limitation

### Applications

- Bin store washdown
- Limited boosting applications

### Features

- Standard stock item
- Illuminated 'On/Off' switch
- Duty: 0.25 l/s @ 2.2 bar (mid curve)
- Lightweight stainless steel cabinet
- Break Tank: 18 litre (4 gallon)
- Glycerine filled pressure gauge
- CAT5 AB Air gap to prevent backflow contamination
- Optional Extra: Cabinet can be fitted with a thermostat controlled heater



### Dimensions

Width: 420 mm

Depth: 370 mm

Height: 750 mm

### Electrical

Watts: 0.37 kW

Volts: 240 V

Amps: 2.3 A

### Approx Weight

25 kg

*Please contact our sales team for further information on these and the complete range of KGN Pillinger water boosting equipment, pressurisation units and stainless steel fabrication.*

# PABRM15 Pump

New and improved PABRM15 Pump which replaces the PABM 15 and is suitable for use with clean water that does not contain abrasive particles and liquids that are not chemically aggressive towards the materials from which the pump is made. The brass pump body construction guarantees against the formation of rust and oxidation. As a result of these characteristics these pumps are suitable for use in industrial applications such as cooling, conditioning and boiler feed. The pump should be installed in an enclosed environment, sheltered from inclement weather.



## Performance range:

- Flow rate up to 40 l/min (2.4 m³/h)
- Head up to 35 m
- Class F insulation
- Protection IP 44

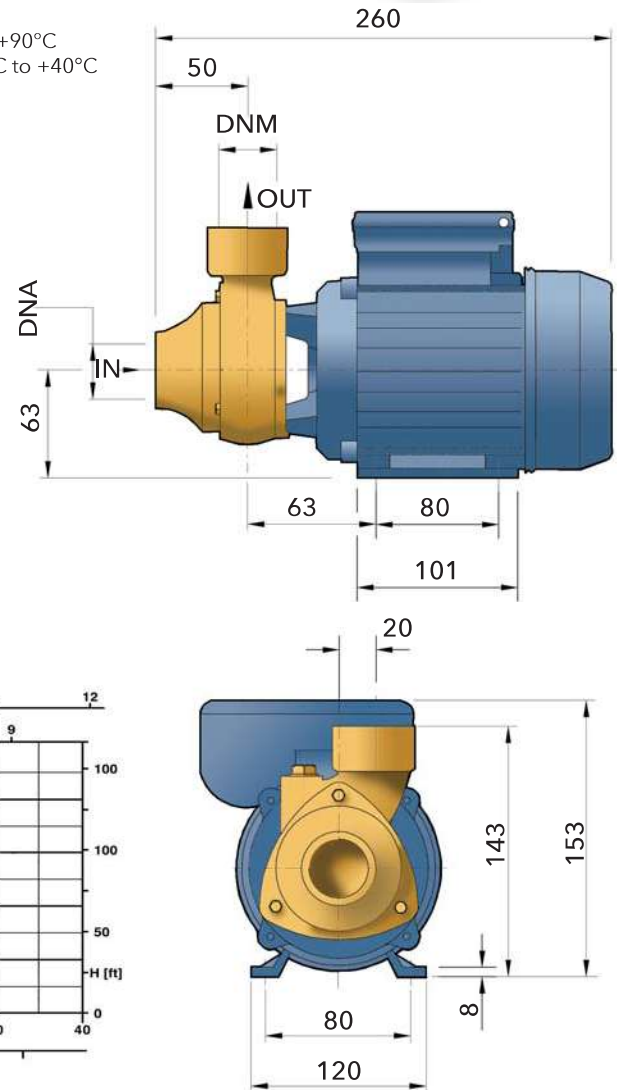
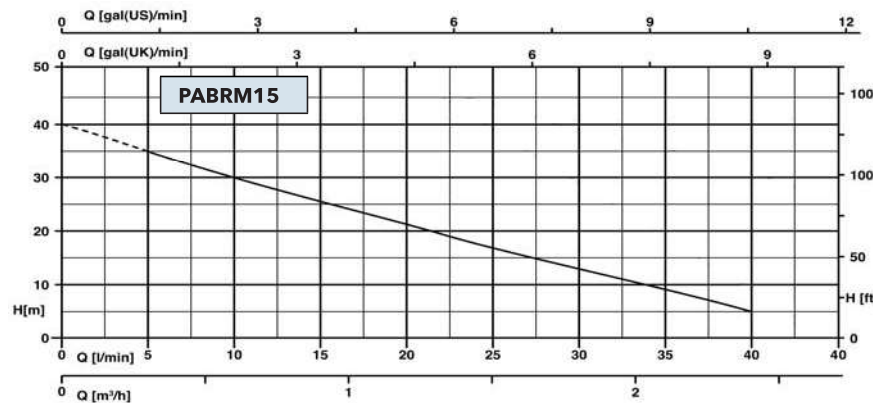
## Application limits:

- Weight 5.7 kg
- Liquid temperature between 0°C to +90°C
- Ambient temperature between -10°C to +40°C
- Max. working pressure 6 bar

## Specifications:

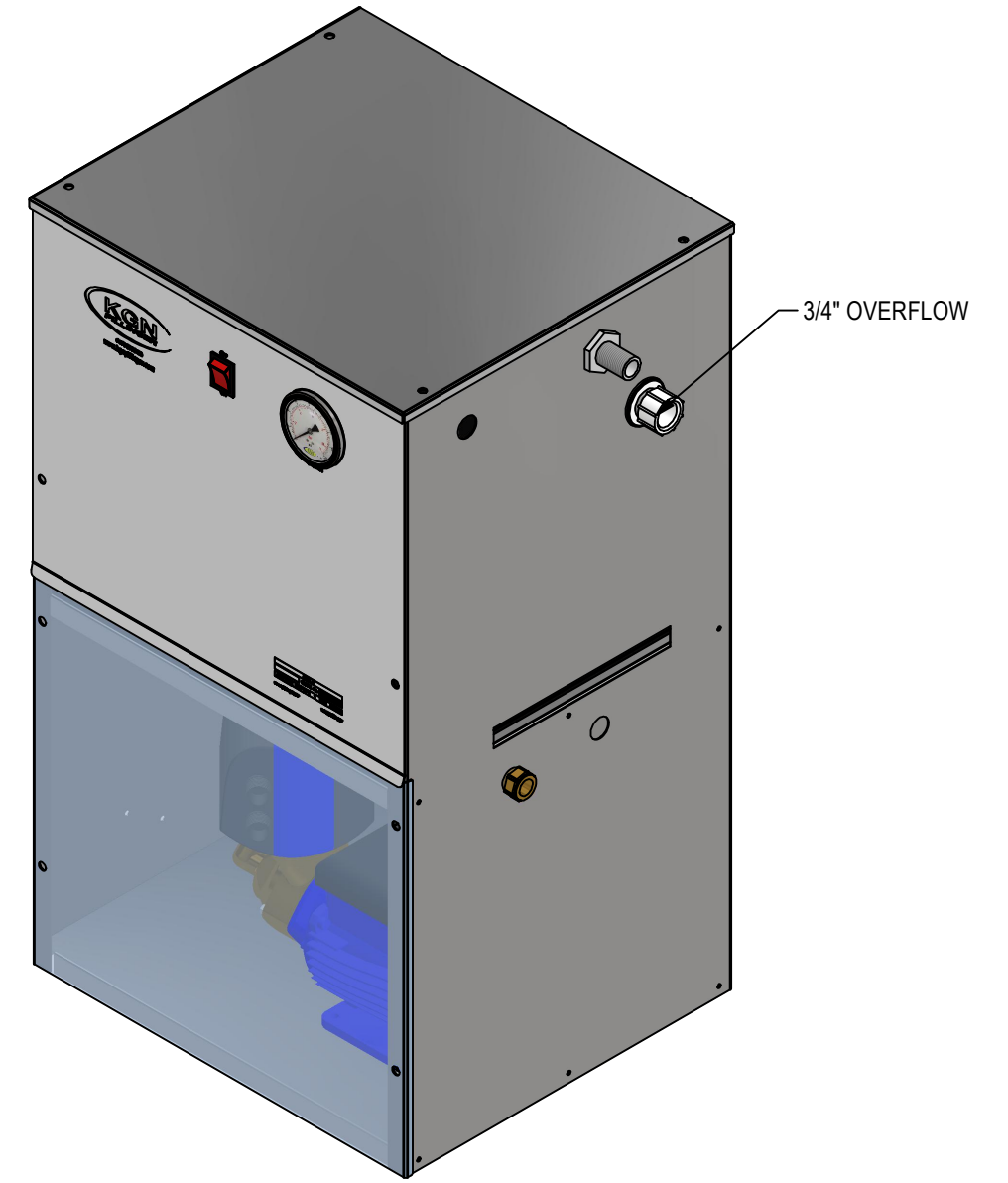
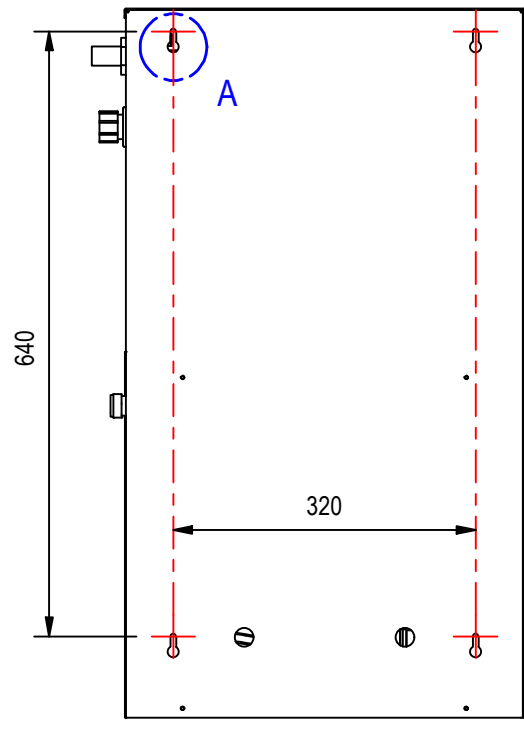
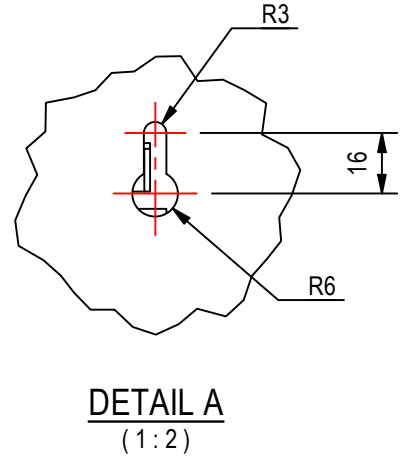
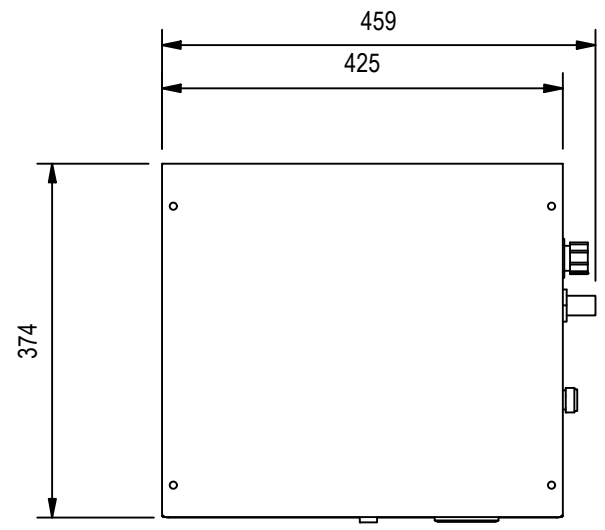
Pump Body	Brass
Body Plate	Brass
Motor Bracket	Brass
Impeller	Brass
Motor Shaft	Stainless steel AISI 416
Mechanical Seal	Ceramic-graphite

Characteristic curve and performance data  
50 Hz n = 2900 1/min HS = 0m:

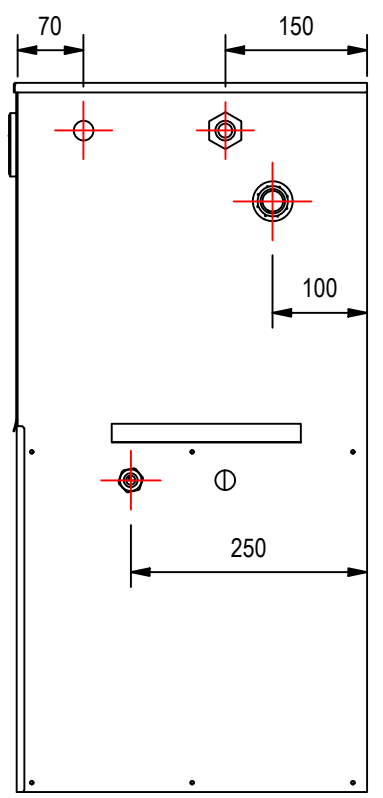
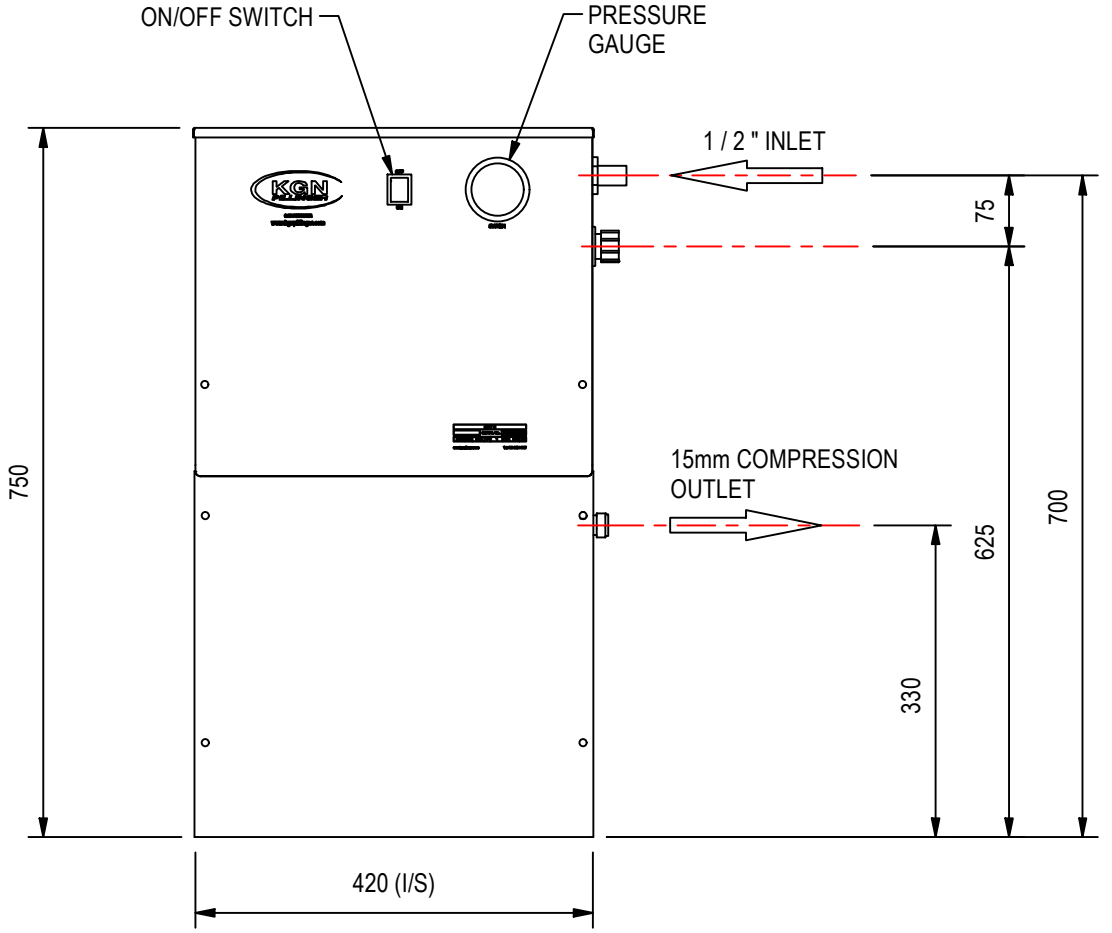


Model	Power		P1 (kW)	Input current	Q	Flow rate					
	kW	HP				1 ~	m³/h	0.3	0.6	1.2	1.8
PABRM15	0.37	0.37	0.5	2.3A		5	10	20	30	40	50
					H (m)	35	30	21	13	5	-

DO NOT SCALE - IF IN DOUBT ASK



- CAT5 BOOSTER UNIT FEATURES:-**
- STANDARD STOCK ITEM
  - LIGHT WEIGHT STAINLESS STEEL CABINET
  - ILLUMINATED ON/OFF SWITCH
  - DUTY 0.25 I/S @ 2.2 BAR
  - LOW LEVEL PROTECTION
  - BREAK TANK 18 ltr ( 4 GALLON )
  - GLYCERINE FILLED PRESSURE GAUGE
  - CAT5 AB AIRGAP



PROD APPD					
DES APPD	X.1	NOTES UPDATED	05.09.22	TG	MS
	X	ISSUED FOR CONSTRUCTION	19.05.21	DS	
CHECKED	A	ISSUED FOR APPROVAL	12.11.18	AO'B	
	ISS	DESCRIPTION	DATE	DRN	APPD

THE COPYRIGHT OF THIS DOCUMENT IS OWNED BY KGN PILLINGER. IT IS ISSUED IN CONFIDENCE AND MUST NOT BE REPRODUCED IN ANY FORM, FOR ANY PURPOSE TO A THIRD PARTY EITHER WHOLLY OR IN PART WITHOUT WRITTEN CONSENT.

ALL DIMENSIONS IN MM EXPLANATION OF DIMENSIONS ETC. SEE BS 8888

THIRD ANGLE PROJECTION

Unit 12 Wells Place, Merstham, Redhill, Surrey, RH1 3AS  
Tel: 020 86810097 www.kgnpillinger.com

TITLE CAT5/CAB INTERNAL				
DESCRIPTION CAT5 WASHDOWN BOOSTER SET FOR INTERNAL USE				
DRAWING No. 25214-GA-01	REV A	SCALE 1:8	SHT No. 1 OF 6	SIZE A3