



Water Engineering in Motion

sales@kgnpillinger.com

tel. 0208 681 0097

ProductDataSheet



Booster Sets

CAT5/CAB Washdown Booster Set

The KGN Pillinger External CAT 5 Washdown Booster Set is designed to prevent backflow contamination of the mains water supply, while maintaining flow and pressure. The unit is compact, lightweight, and housed in a GRP cabinet. Suitable for external use, the unit also has a built in heater for cold weather protection.

Advantages

- Automatic operation
- Simple to wall or floor mount and install
- Easy access and maintenance
- Suitable for external usage

Design

Single peripheral pump and water storage tank housed in a GRP cabinet.

1 outlet connection only

5 metre hose limitation

Applications

- Bin store washdown
- Limited boosting applications

Features

- Stand stock item
- Duty: 0.25 l/s @ 2.2 bar (mid curve)
- Lightweight GRP Kiosk
- Break Tank: 18 litre (4 gallon)
- Cabinet fitted with a thermostat controlled heater
- CAT5 AB Air gap to prevent backflow contamination



Dimensions (approx.)

Width: 610 mm

Depth: 390 mm

Height: 1070 mm

Electrical

Watts: 0.37 kW

Volts: 240 V

Amps: 2.3 A

Approx Weight

30 kg

Please contact our sales team for further information on these and the complete range of KGN Pillinger water boosting equipment, pressurisation units and stainless steel fabrication.

PABRM15 Pump

New and improved PABRM15 Pump which replaces the PABM 15 and is suitable for use with clean water that does not contain abrasive particles and liquids that are not chemically aggressive towards the materials from which the pump is made. The brass pump body construction guarantees against the formation of rust and oxidation. As a result of these characteristics these pumps are suitable for use in industrial applications such as cooling, conditioning and boiler feed. The pump should be installed in an enclosed environment, sheltered from inclement weather.



Performance range:

- Flow rate up to 40 l/min (2.4 m³/h)
- Head up to 35 m
- Class F insulation
- Protection IP 44

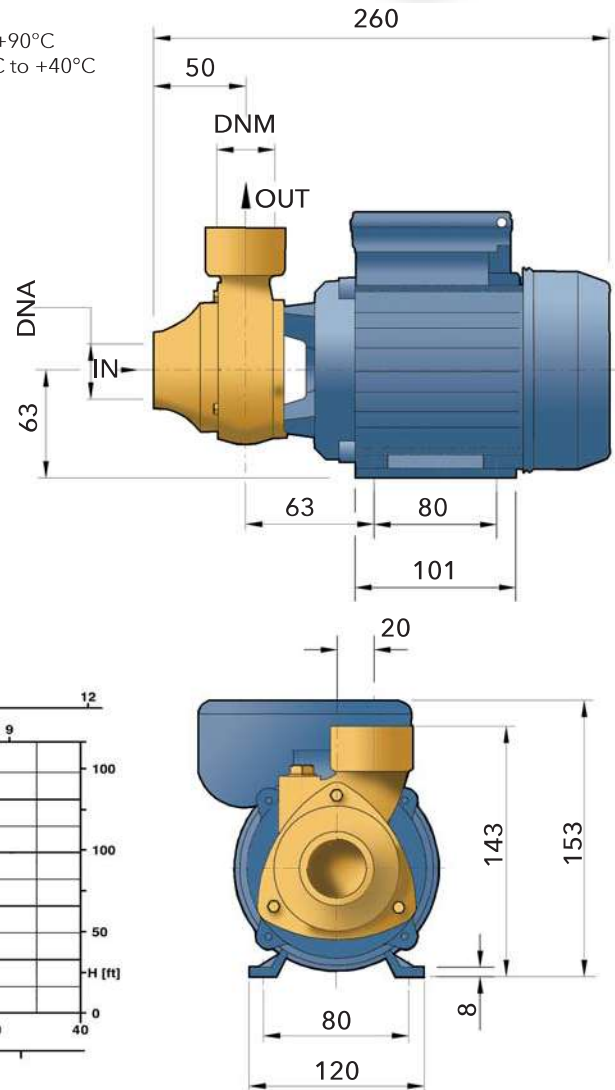
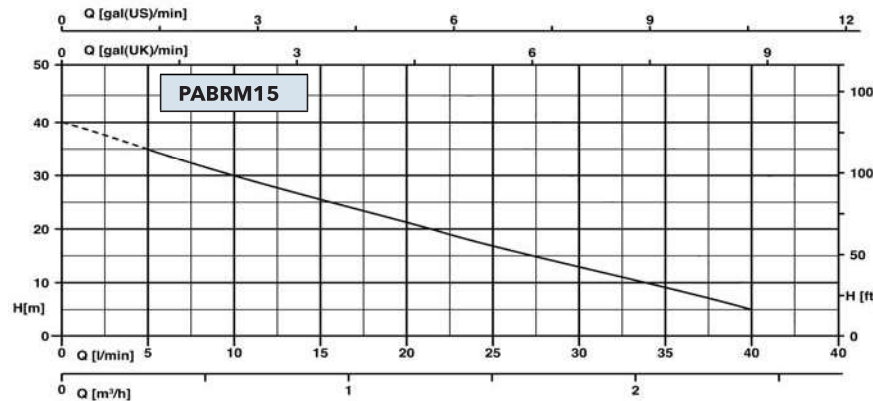
Application limits:

- Weight 5.7 kg
- Liquid temperature between 0°C to +90°C
- Ambient temperature between -10°C to +40°C
- Max. working pressure 6 bar

Specifications:

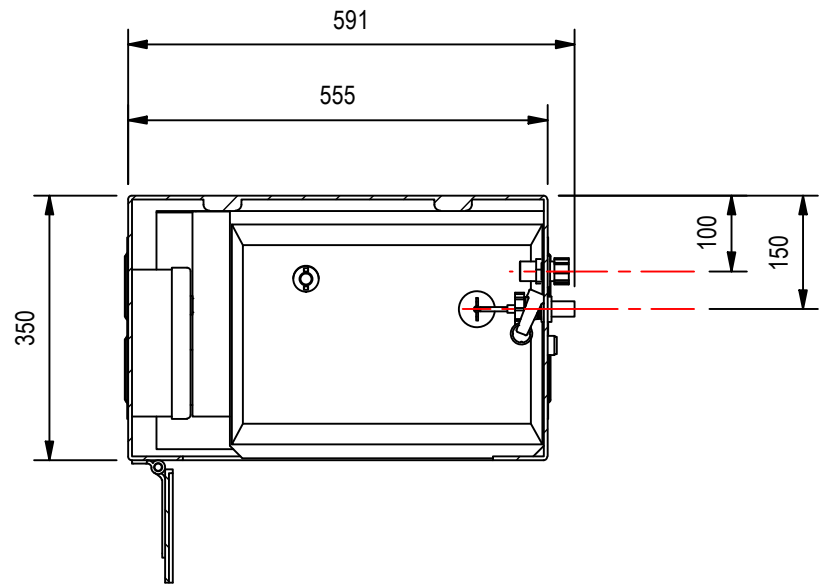
Pump Body	Brass
Body Plate	Brass
Motor Bracket	Brass
Impeller	Brass
Motor Shaft	Stainless steel AISI 416
Mechanical Seal	Ceramic-graphite

Characteristic curve and performance data
50 Hz n = 2900 1/min HS = 0m:

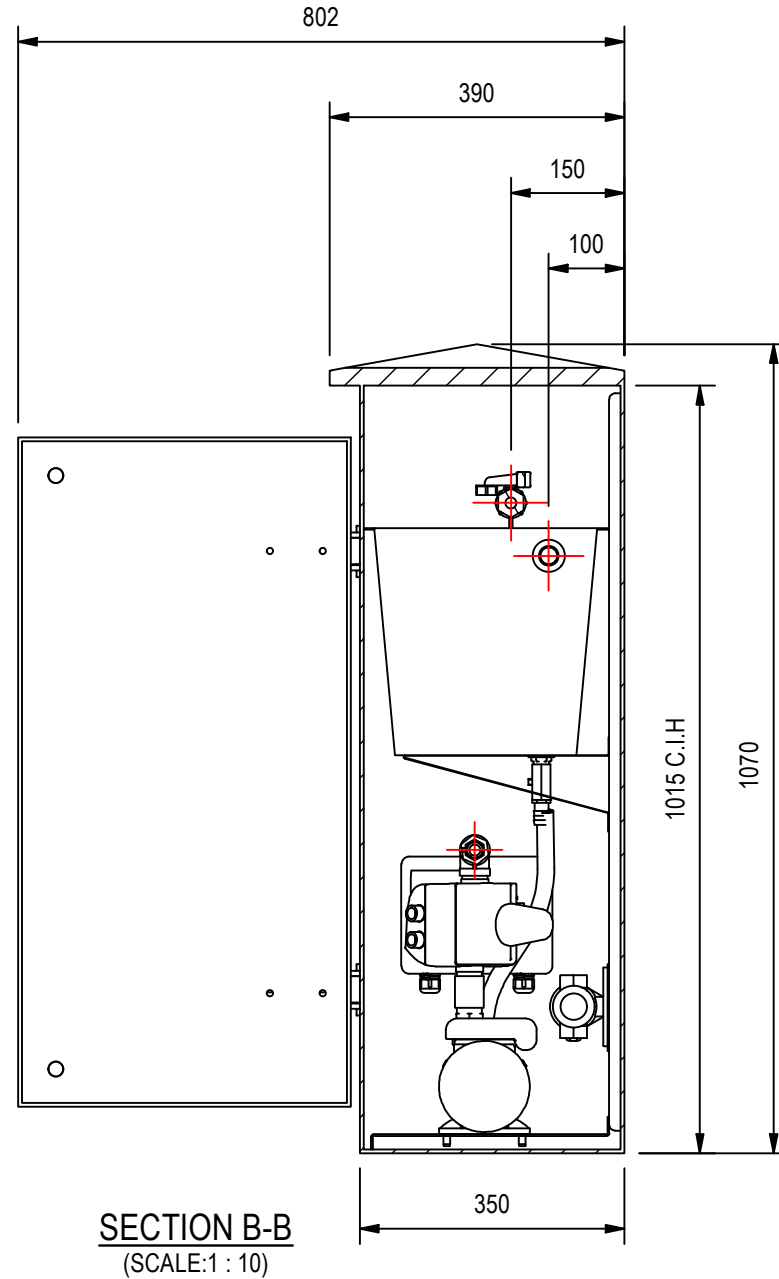
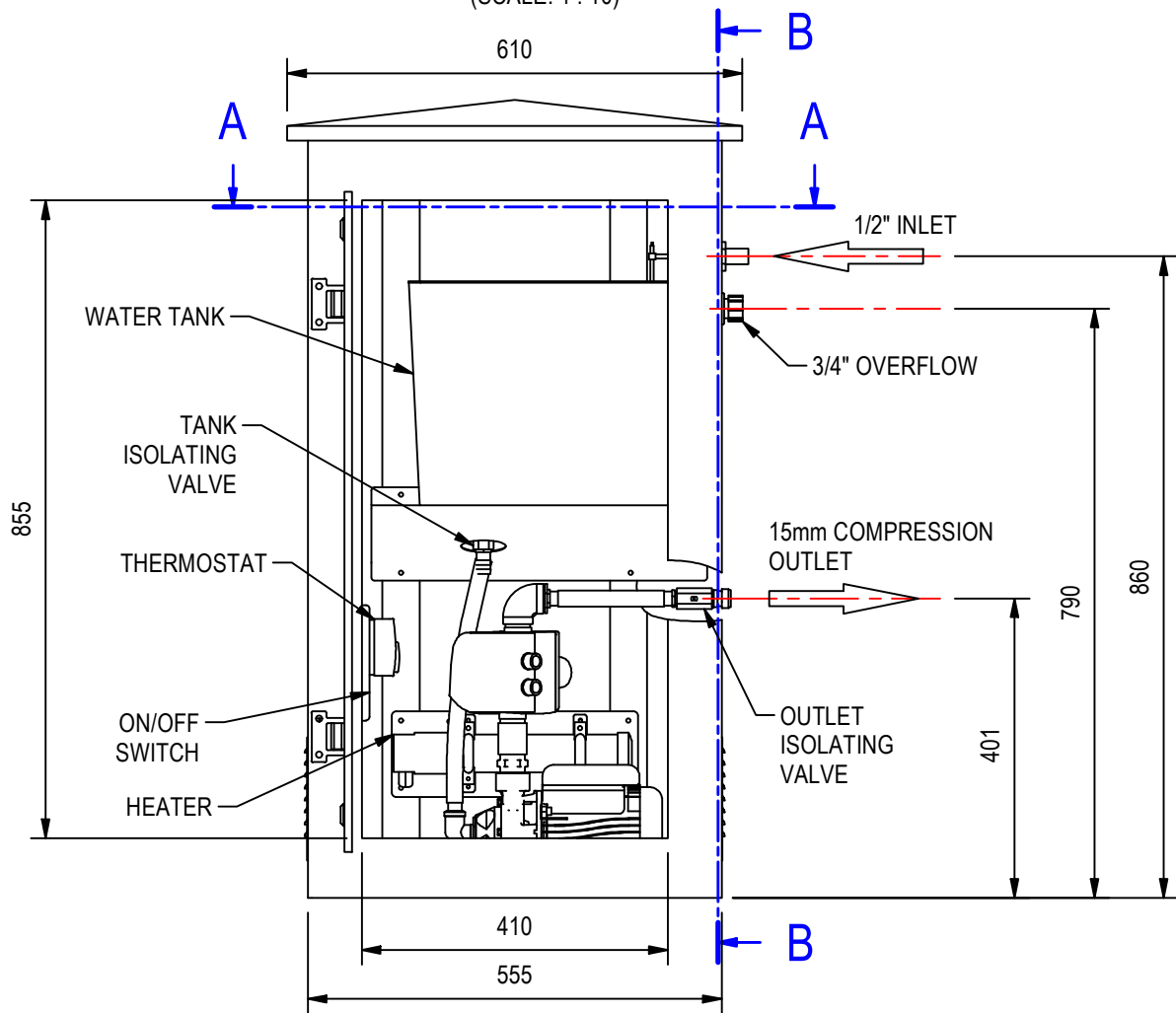


Model	Power		P1 (kW)	Input current	Q	Flow rate					
	kW	HP				1 ~	m³/h	0.3	0.6	1.2	1.8
PABRM15	0.37	0.37	0.5	2.3A		5	10	20	30	40	50
					H (m)	35	30	21	13	5	-

DO NOT SCALE - IF IN DOUBT ASK



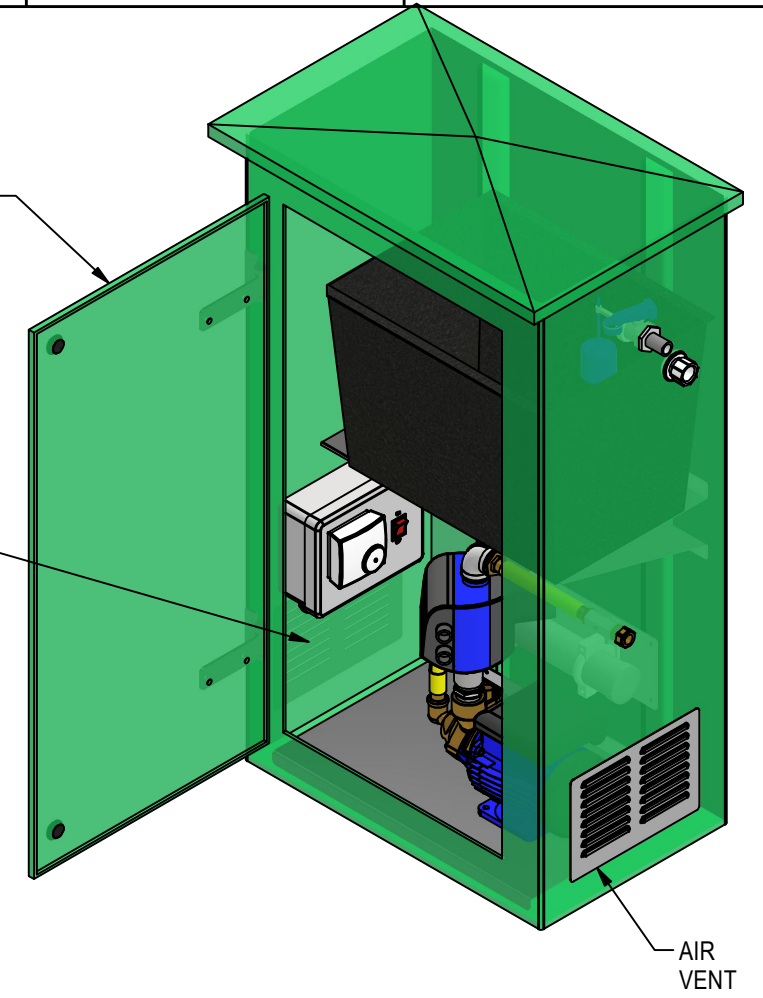
SECTION A-A
(SCALE: 1 : 10)



SECTION B-B
(SCALE: 1 : 10)

GRP KIOSK
610 W x 1070 H x 390 DEEP

AIR VENT



CAT5 BOOSTER UNIT FEATURES:-

- STANDARD STOCK ITEM
- LIGHT WEIGHT GRP KIOSK
- ILLUMINATED ON/OFF SWITCH
- DUTY 0.25 L/S : 2.2 BAR
- LOW LEVEL PROTECTION
- BREAK TANK 18 Ltrs (4 GALLON)
- GLYCERINE FILLED PRESSURE GAUGE
- CAT5 AB AIRGAP
- THERMOSTAT CONTROLLED HEATER

PROD APPD					
DES APPD	X	ISSUE FOR CONSTRUCTION	05.09.22	TG	MS
	B	DESIGN UPDATED	26.5.21	DS	
CHECKED	A	ISSUED FOR APPROVAL			
	ISS	DESCRIPTION	DATE	DRN	APPD

THE COPYRIGHT OF THIS DOCUMENT IS OWNED BY KGN PILLINGER. IT IS ISSUED IN CONFIDENCE AND MUST NOT BE REPRODUCED IN ANY FORM, FOR ANY PURPOSE TO A THIRD PARTY EITHER WHOLLY OR IN PART WITHOUT WRITTEN CONSENT.

ALL DIMENSIONS IN MM
EXPLANATION OF DIMENSIONS ETC.
SEE BS 8888

CLIENT
KGN STANDARD

PROJECT

THIRD ANGLE PROJECTION

Unit 12 Wells Place, Merstham, Redhill, Surrey, RH1 3AS
Tel: 020 86810097 www.kgnpillinger.com

TITLE CAT5/CAB EXTERNAL			
DESCRIPTION CAT5 WASHDOWN BOOSTER SET FOR EXTERNAL USE			
DRAWING No. 25335-GA-01	SCALE 1 : 10	SHT SIZE 1 OF 1	SIZE A3