

www.littlecheer.com

Vol 1, Issue III

BLOOM



THE SECRET GARDEN

EMBROIDERY COLLECTION 22

Venture into the luxury world of designer
girlswear.


LittleCheer
Kids • Couture • Joy

ABOUT US

Children love to play dress up and then everybody has a good time. We love to see our little ones in exquisite, elegant, unique, and stylish kids' wear and we at **LittleCheer** promise to transform every moment in your little one's life into a stylish grandeur.

Incepted in 2021, **LittleCheer** is about finding joy in dressing up like you are famous.

The brand is born with the thought to offer designs that are inspired by global styles and made with the finest fabrics sourced from across the world.





ABOUT THE SECRET GARDEN

"Uncover the magic of nature with "The Secret Garden" kidswear collection. Inspired by the hidden gems of gardens, each piece is crafted with love to bring a touch of enchantment to your little one's wardrobe. Discover the mysteries and wonders of the great outdoors in style. Plant the seed of imagination with our Collection.

SUNFLOWER

EMBROIDERY TIERED DRESS

Show your brighter side with this happy sunny dress. Made using fine quality muslin, the bodice is embroidered with blooming sunflowers and the skirt is made with tiers of fabric gathered to give a voluminous look.

Fabric - Cotton Muslin
Color - Beige





Beautiful border embroidery of blooming flowers done all over the dress. The outfit is made with soft cotton cambric fabric.



MINI GARDEN EMBROIDERY DRESS

Fabric - Cotton Seer Sucker
Color - Green





FLORAL EMBROIDERY KAFTAN DRESS

The beautiful draw-string Kaftan dress lined with a bright yellow pom-pom lace is made with soft self textured cotton fabric having box geometric pattern.

Fabric - Cotton Blend
Color - Creamy White





SCHIFFLI

BLUE EMBROIDERY

CROP TOP & SKIRT CO-ORD

This funky co-ord set is crafted from a soft cotton embroidered Schiffli fabric. The outfit has floral scalloped borders to create a crop top with shoulder straps and a skirt with scalloped embroidered border.

Fabric - Schiffli Cotton Slub
Color - White



Fabric - Cotton Crepe
Color - White



MULTICOLOR FLORAL EMBROIDERY DRESS

Intricate pattern of floral twigs and twines embroidered on a soft cotton crepe fabric to create a feel of a nice blooming garden.

BUTTERFLIES

EMBROIDERY DRESS

Fabric - Cotton Slub

Color - Light Yellow



We all like to see butterflies in a garden. Imagine, many colorful butterflies embroidered on a soft cotton fabric and made into an appealing dress for your little lady!





CHELSEA

COLAR FLORAL

EMBROIDERY LAVENDER DRESS

Fabric - Cotton Rayon
Color - Lavender



Bring the retro look back with this elegant lavender dress having Chelsea (V-Shaped) collar extending into a square flap at the back.



SCHIFFLI

BLUE EMBROIDERY

CROP TOP AND PANTS CO-ORD

This funky co-ord set is crafted from a soft cotton embroidered Schiffli fabric having floral scalloped borders to create a crop top with shoulder straps and a pants with pockets.

Fabric - Schiffli Cotton Slub
Color - White



BIG FLOWER

EMBROIDERY BEIGE DRESS



Big red flower embroidery using finest silk threads done on soft cotton cambric fabric and made into a beautiful subtle dress with pleated gathers.

Fabric - Cotton Cambric
Color - Beige

FLORAL EMBROIDERY TIERED DRESS

Beautifully embroidered laces of floral vines patched seamlessly into three tiers of gathered frills to create this elegant white dress.



Fabric - Cotton Crepe
Color - White



SCHIFFLI

EMBROIDERY A-LINE

TIERED DRESS



This simple yet aesthetically designed dress is made with Schiffli fabric. Intricate floral embroidery is being done on the fabric that has pattern of tiny butterflies as booties all over.

Fabric - Schiffli Cotton Slub
Color - White



BIG FLOWER

EMBROIDERY YELLOW DRESS



Big red flower embroidery using finest silk threads done on soft cotton cambric fabric and made into a beautiful subtle dress with pleated gathers.

Fabric - Cotton Cambric
Color - Yellow



SCHIFFLI BLUE EMBROIDERY

CROP TOP & SHORTS CO-ORD

This funky co-ord set is crafted from a soft cotton embroidered Schiffli fabric. The fabric has floral scalloped borders. The crop top with shoulder straps and shorts with pockets has a beautiful floral embroidery along the border.



Fabric - Schiffli Cotton Slub
Color - White



CHELSEA

COLLAR FLORAL

EMBROIDERY WHITE DRESS



Fabric - Cotton Rayon
Color - White



Bring the retro look back with this elegant white dress having Chelsea (V-Shaped) collar extending into a square flap at the back.



RED FLORAL EMBROIDERY

SHORT DRESS WITH A CAPE

A dress with floral pattern embroidery done in deep red and green color around the upper bodice part is paired with a cape. The cape has beautiful embroidery around the pockets and is held with the inner dress using tich buttons.

Fabric - Cotton Crepe
Color - White



SCHIFFLI

BLUE FLORAL

EMBROIDERY DRESS

You will bring smile on the many faces when you slip into this simple yet highly aesthetic dress. The dress is made using a baby soft Schiffli cotton fabric having big floral embroidered motifs all over.



Fabric - Schiffli Cotton Slub
Color - White



PEACOCK MOTIF EMBROIDERY SHORT DRESS

The dancing peacocks in the garden are a pleasing sight. We found a way to delight your daughter by creating the same with embroidered motifs on a pastel grey cotton fabric crafted into an elegant A-line dress.



Fabric - Cotton Slub
Color - Grey





DENSE FLORAL SLEEVE EMBROIDERY DRESS



Garden on your sleeves! A dense embroidered pattern of floral vines crafted on bell shaped sleeves attached to an A-line dress.

Fabric - Cotton Cambric
Color - White



DRAGONFLY EMBROIDERY DRESS

Made with Cotton rayon fabric , this extremely flowy dress has a circular cape frilled sleeves in two layers. Embroidered with the design of dragon flies on sleeves and around the neck, this elegant outfit would be a great addition to your child's closet.

Fabric - Cotton Rayon
Color - Salmon Pink



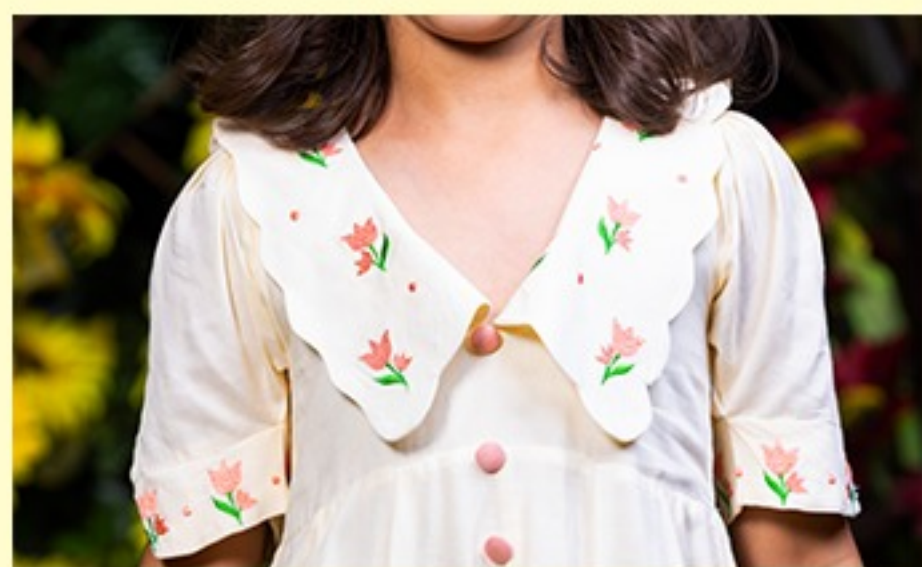
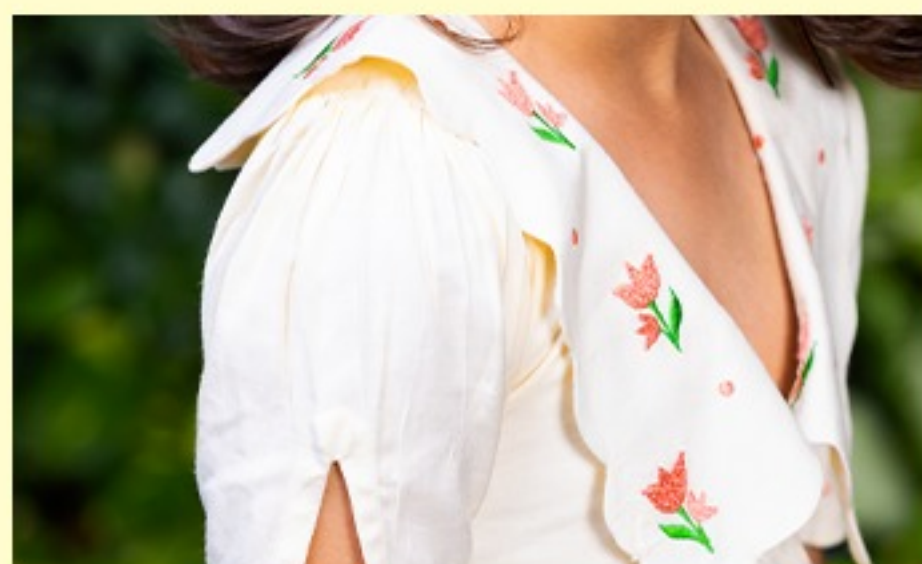
FLORAL MOTIF EMBROIDERY

SHORT COTTON DRESS



Shades of blue used to create big and small floral motifs and crafted into a beautiful bodice panel to craft this masterpiece.

Fabric - Cotton Slub
Color - White



CHELSEA

COLLAR FLORAL

EMBROIDERY BEIGE DRESS

Fabric - Cotton Rayon
Color - Beige

Bring the retro look back with this elegant beige dress having Chelsea (V-Shaped) scalloped collar extending into a square flap at the back. Tastefully done floral embroidery motifs created in salmon and green color on the collars as well as on the cuffs of puffed shaped sleeves.

SIZE	TOP LENGTH (INCHES)	CHEST (INCHES)	BOTTOM LENGTH (INCHES)	WAIST (INCHES)	SHOULDER LENGTH (INCHES)	ARM LENGTH (INCHES)
4-5 Years	10.5	24	24	22	10.5	13
5-6 Years	11	25	26	22.5	11	13.5
7-8 Years	11.5	26	28	23	12	14
8-9 Years	12	27.5	30	23.5	12.5	15.5
9-10 Years	12.5	28.5	31	24	13	17
10-11 Years	13	30	34	24.5	13.5	18
11-12 Years	13.5	32	35	26	14	18.5



© Littlecheer-GN Apparels Pvt Ltd
GST No. : 07AAJCG1072A1Z3
All Rights Reserved 2022



www.littlecheer.com



[_littlecheer_](https://www.instagram.com/_littlecheer_)



[LittleCheer](https://www.facebook.com/LittleCheer)