

www.littlecheer.com

Vol 1, Issue II

BLOOM



SCENT OF BOHO

COLLECTION 22

Venture into the luxury world of designer
girlswear.


LittleCheer®
Kids · Couture · Joy

ABOUT US



Children love to play dress up and then everybody has a good time. We love to see our little ones in exquisite, elegant, unique, and stylish kids' wear and we at **LittleCheer** promise to transform every moment in your little one's life into a stylish grandeur.

Incepted in 2021, **LittleCheer** is about finding joy in dressing up like you are famous.

The brand is born with the thought to offer designs that are inspired by global styles and made with the finest fabrics sourced from across the world.



ABOUT THE SCENT OF BOHO

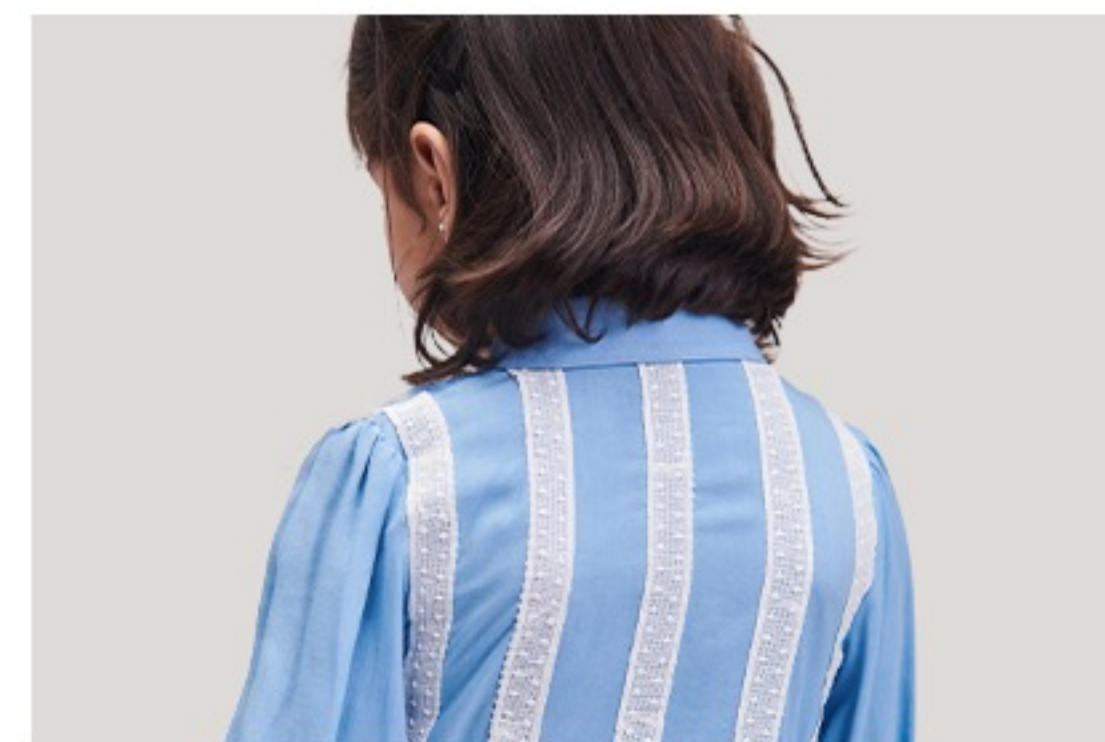
Not only do they look great, the sizing is spot on! 'The Scent of Boho' is for the little girl who wants to stand out from the crowd because she's quirky, bold and unapologetic about it. Our designs are perfect for the little princess on the go!



hues

In the mood

Fabric - Cotton Rayon
Color - Marshmallow Blue



MARSHMALLOW

Crafted from a light weight, soft cotton schiffli fabric and dyed in a salmon pink color, this beautiful dress has gathered Square shaped neckline design and short length frilled sleeves with a scalloped hemline.

FLAMINGO

Fabric - Cotton Blend

Color - White Top & Salmon Pink Palazzo



White top made with superior quality schiffli cotton fabric. Sleeves have a puff design and soft frill lace is placed along the waist line. The top has a front opening and is paired with a Salmon Pink Palazzo Outfit.

BOHO BLOOM



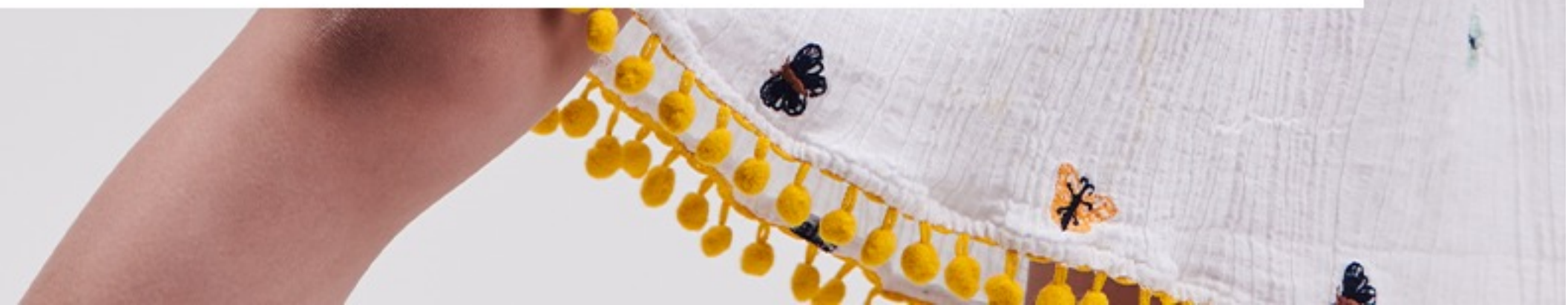
Crafted from a light weight, soft cotton schiffli fabric and dyed in a salmon pink color, this beautiful dress has gathered Square shaped neckline design and short length frilled sleeves with a scalloped hemline.

Fabric - Multicolor : Pink, Yellow, Blue
Color - 80% Cotton

BUTTERFLY

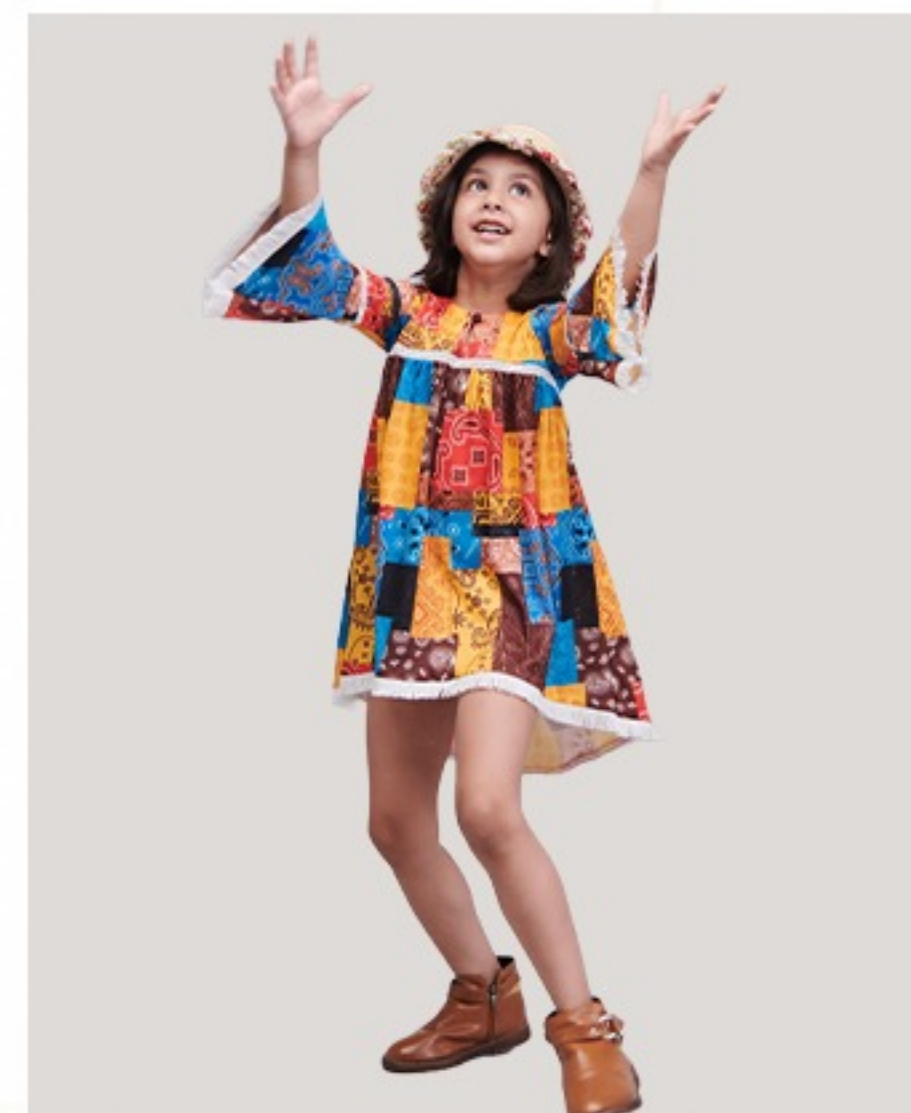
Your girl would be called a pretty petite whenever she would step out wearing this beautiful summer wear dress having butterfly embroidery all over the outfit.

Fabric - Cotton Blend
Color - White



BOHO CHIC

Fabric - Polyester Lycra
Color - Multicolor



Truly boho, this patchwork print one-piece summer dress infused with intricate lace is a gorgeous chic design and a must have in your summer closet. This high low outfit is outlined with an interesting frill lace at the bottom and around A-shaped sleeves.

EDEN GARDEN

Fabric - Cotton Rayon
Color - Multicolor

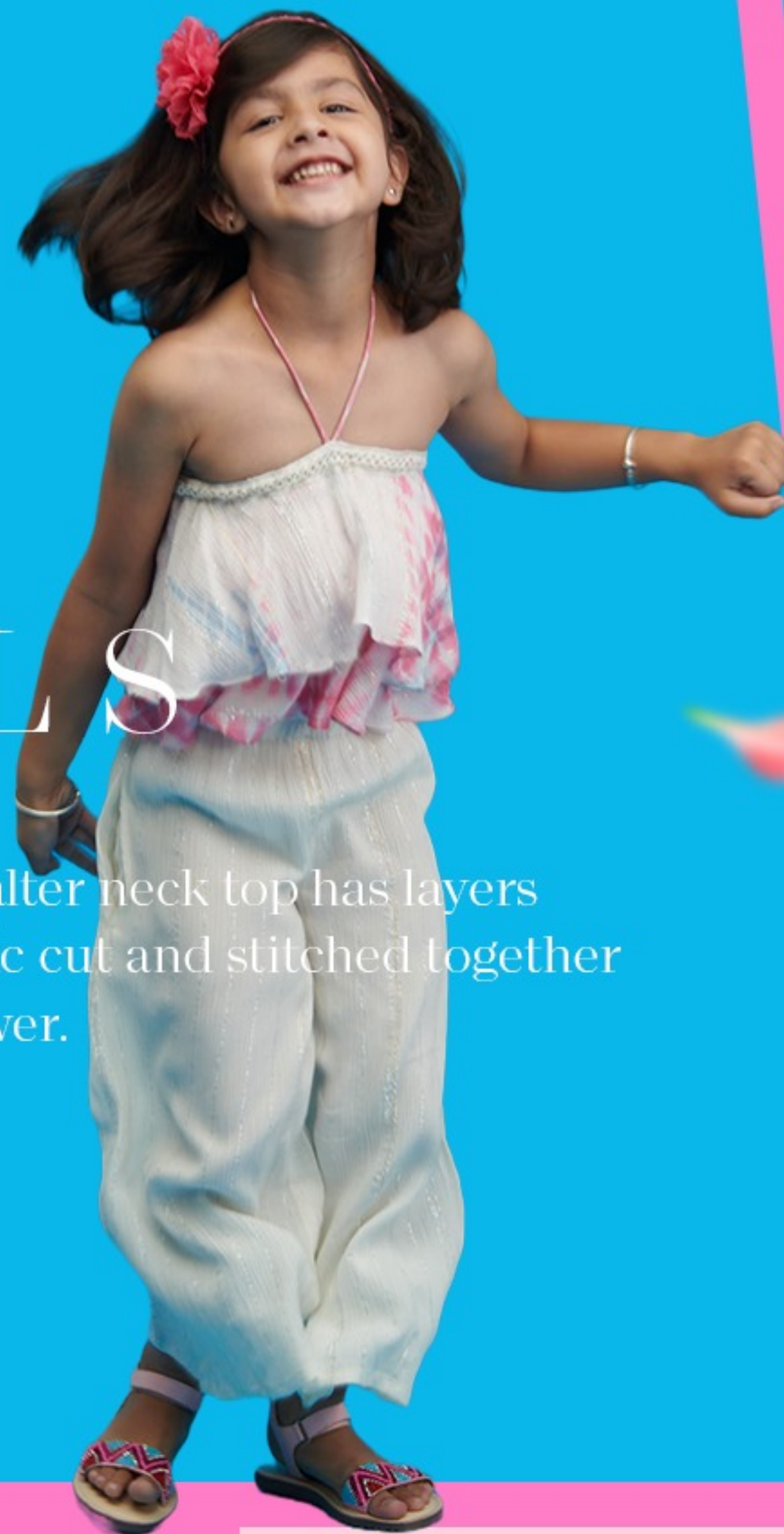


Eden Garden Dress derives its name from the rich bright tropical forest print. Crafted into a classy summer one-piece dress for girls this dress has got tiered frills at the bottom and around sleeves.



PINK PETALS

True to the name, the halter neck top has layers of tie and dye pink fabric cut and stitched together like the petals of the flower.



Fabric - Cotton Crepe
Color - White and Pink

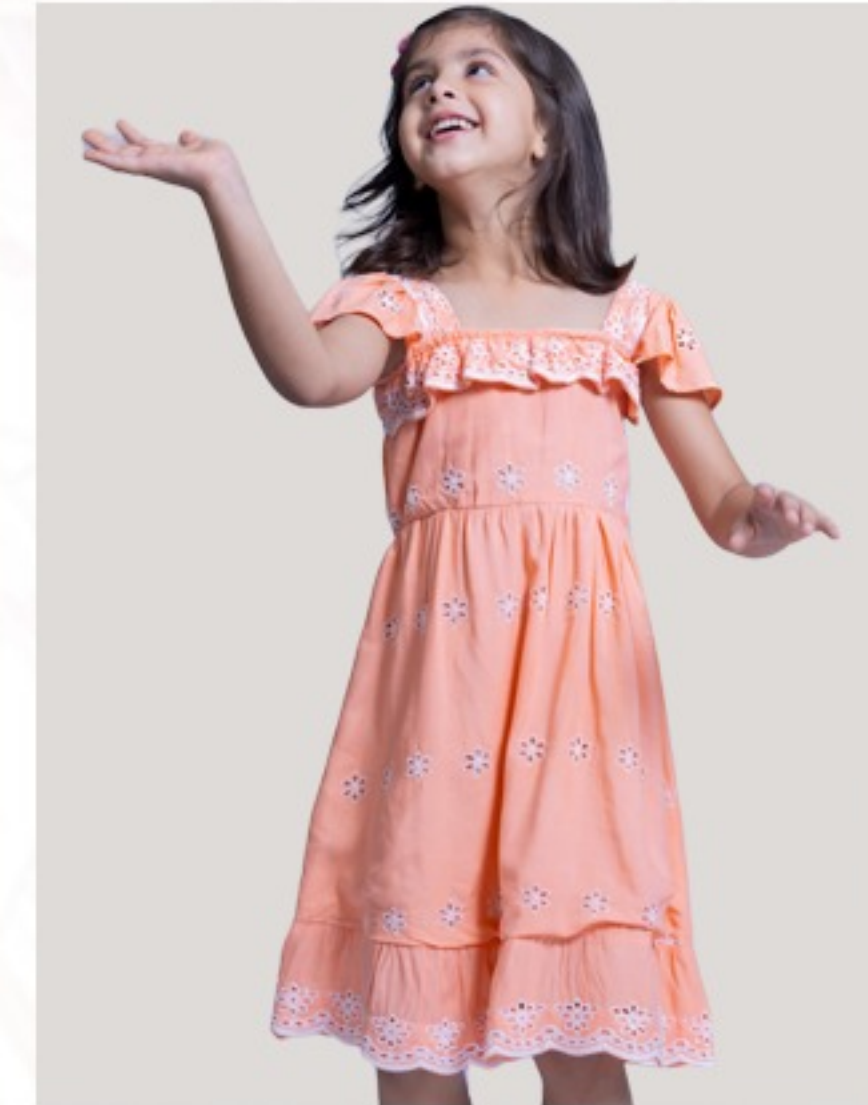
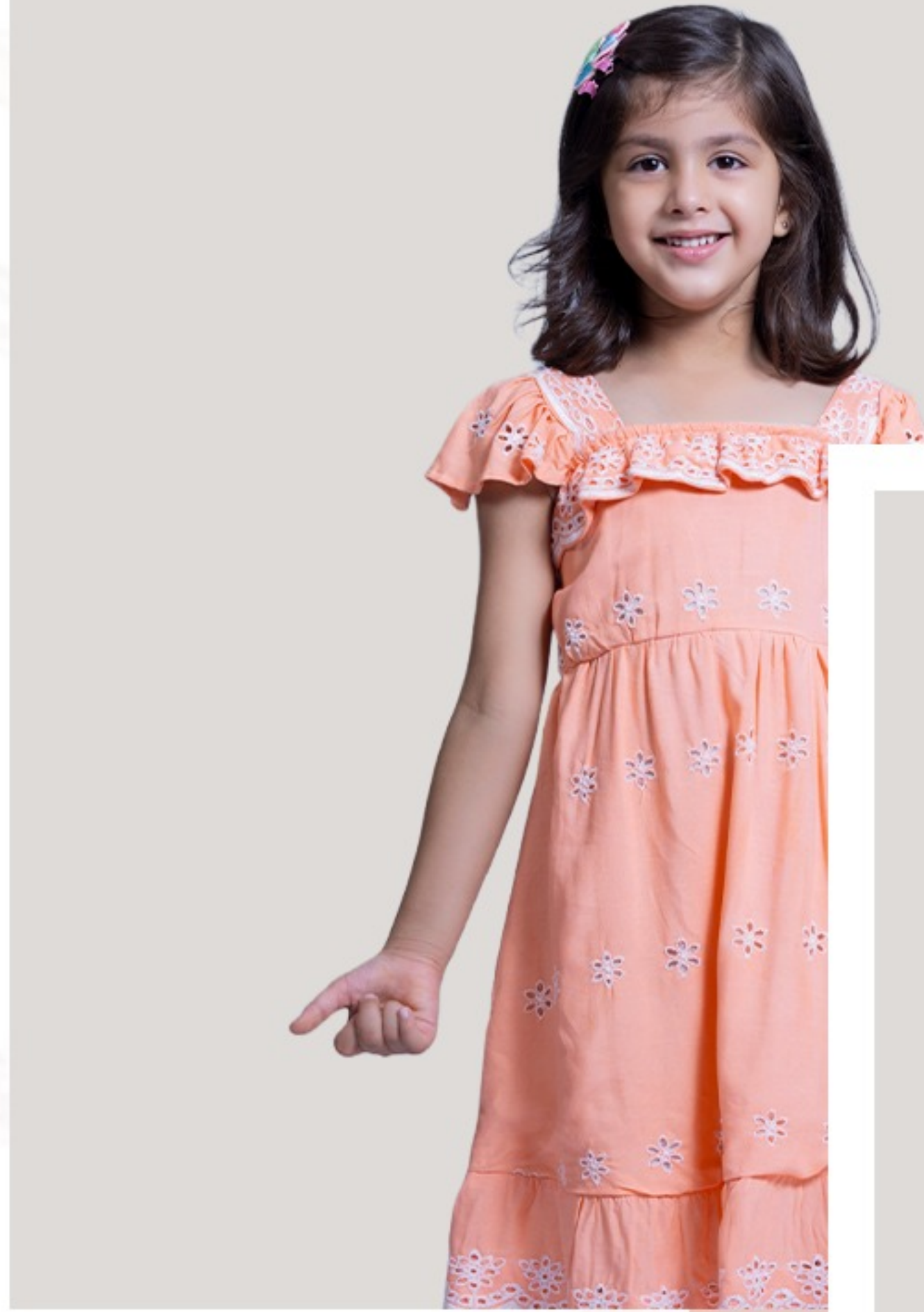
SWAN

Bright as Swan, this dress will make your little one look like a fairy. Made into a culotte, this stylish outfit comes with waist to shoulder frilled sleeve design and deep back slit tied into a long bow.



Fabric - Cotton Blend
Color - White

Crafted from a light weight, soft cotton schiffli fabric & dyed in a salmon pink color, this beautiful dress has gathered square shaped neckline design & short length filled with a scalloped hemline.



CORAL

Fabric - Cotton Schiffli Fabric
Color - Salmon Pink

ROSE

Fabric - Cotton Cambric
Color - Hot Pink



Beautiful midi dress, featuring light weight self embroidered fabric, a smocked bodice , with a straight elastic hemline attached with long bishop drop sleeves to give off- shoulder appearance to the outfit.

DENIM DAZZLE



Make a statement with this
printed denim look-alike co-ord
Top & Palazzo summer wear
out fit.

Fabric - Cotton Blend
Color - Denim Blue

BLUEBERRY

Fabric - Cotton Blend

Color - White



Pretty little lady with a sophisticated english look in this elegant white dress. Made with a soft cotton fabric having blue floral pattern all over.



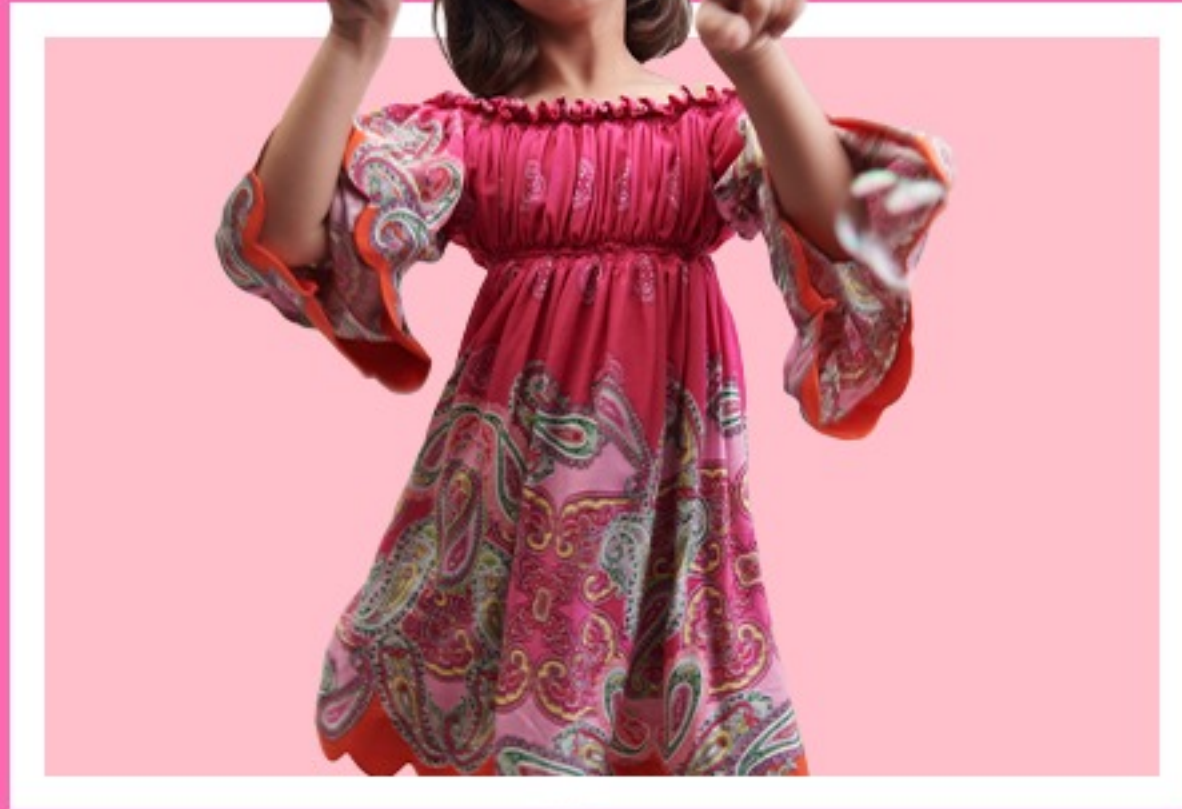
MILKYWAY

This eye-soothing casual wear dress is made with buttery cotton rayon fabric adorned with colorful linear weaves done horizontally across the border.



Fabric - Cotton Rayon
Color - Creamy White

PINA COLADA



The Pink Pina Colada is a glamorous off-shoulder casual wear dress for girls with gathered neckline sweeping across the chest.

Fabric - Cotton Rayon
Color - Multicolor



The rosemary casual wear dress is filled with tiny details that makes it so special. This floral printed dress has gathered frills all around, arranged in tiers and sleeves giving it a voluminous dimension.

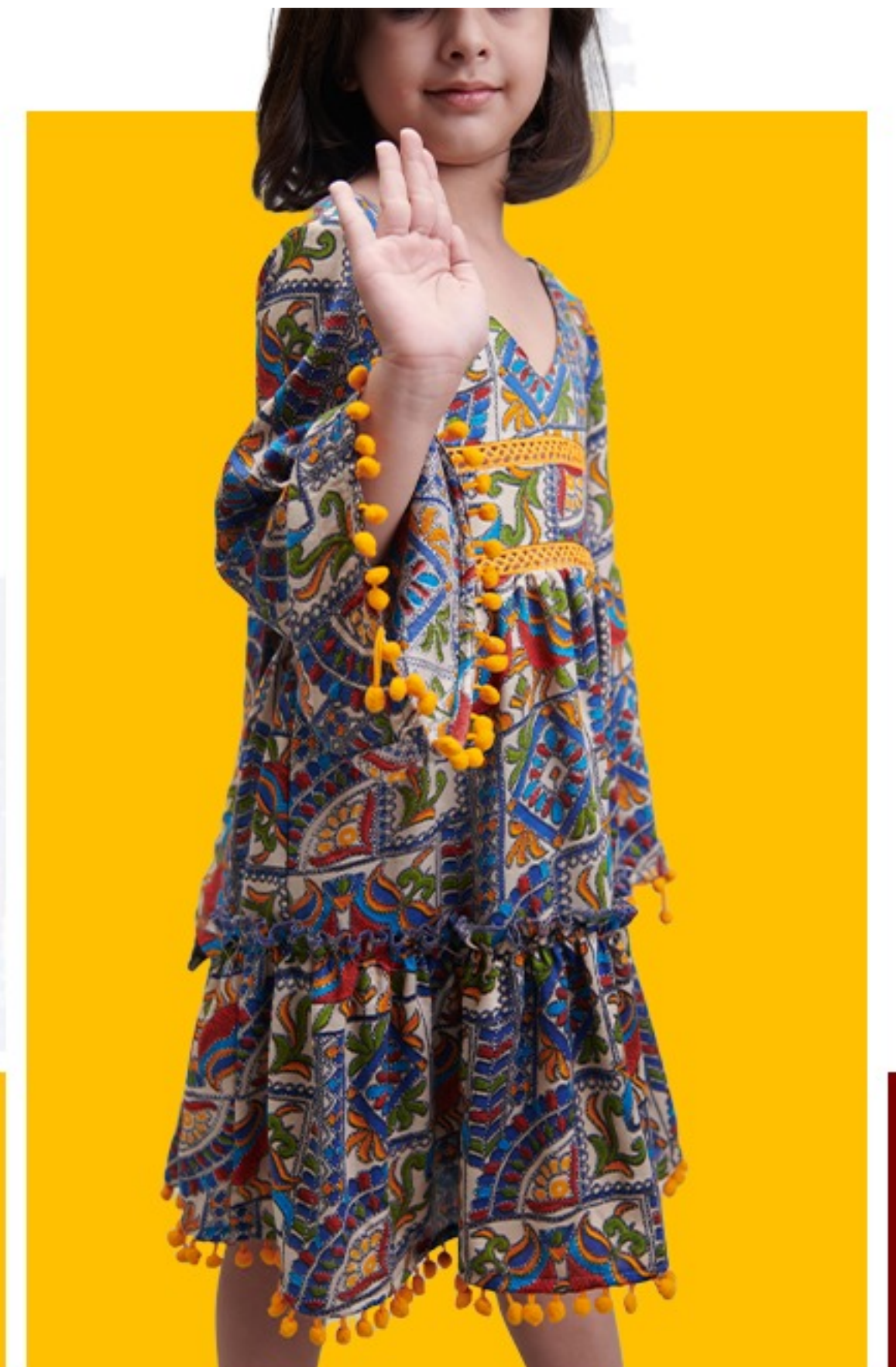
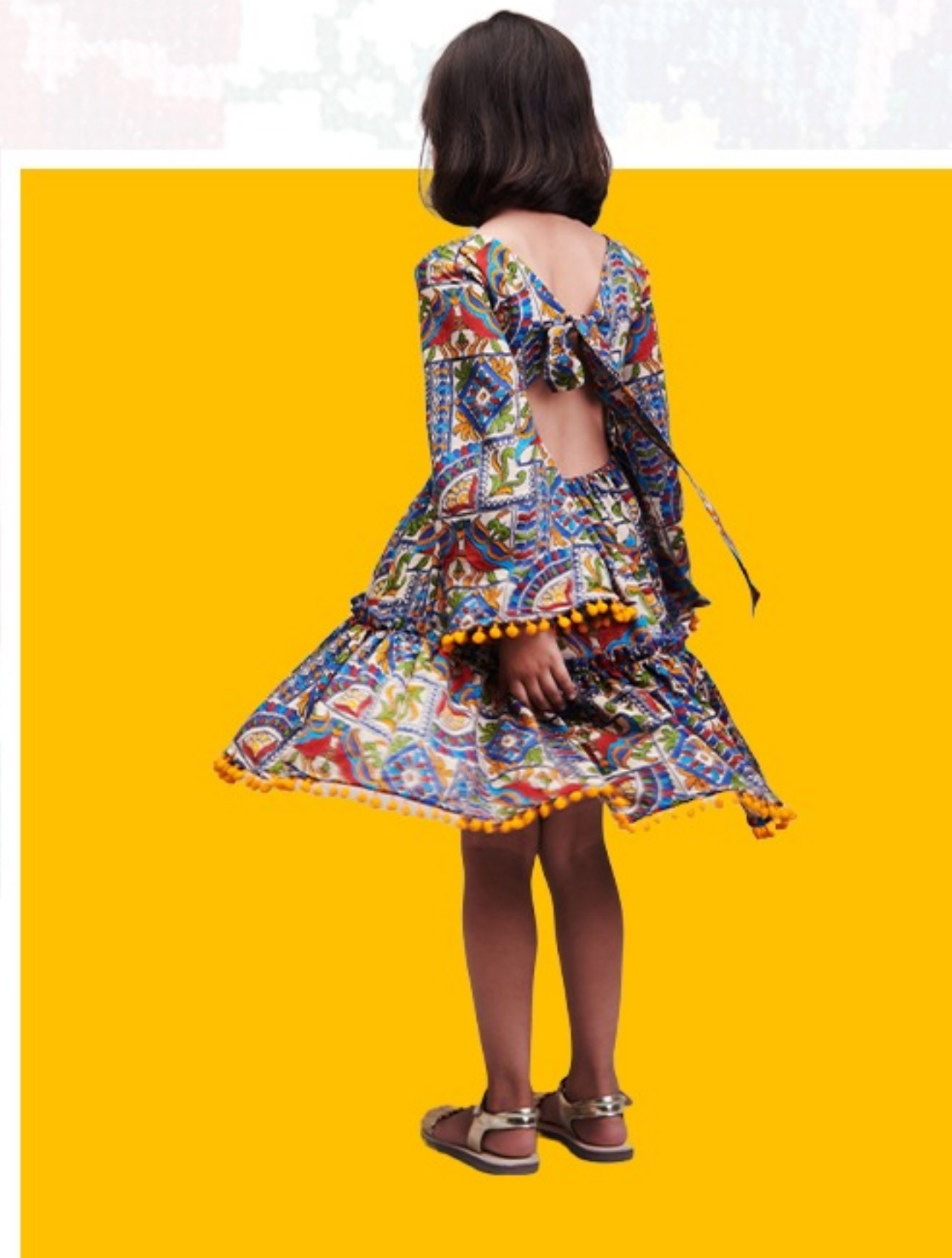


ROSEMARY

Fabric - Cotton Blend
Color - White

LITTLE GYPSY

This highly versatile summer dress is a perfect choice for comfort seekers. Made with light weight, soft and fluid kantha print fabric.



Fabric - Cotton Rayon
Color - Multicolor



HELLO SUNSHINE

You will bring smiles on the faces of people when you slip into this simple one-piece jumpsuit co-ord dress made with soft cotton fabric.

Fabric - Cotton Blend
Color - Creamy White



BLUE LAGOON

This stylish patchwork print pleated one-piece casual wear dress is a perfect add on to your summer wardrobe. This relaxed, flowy, freestyle dress can be a picture-perfect selfie outfit for your little one.



Electiv
Prints

Fabric - 80% Cotton
Color - Multicolor



© Littlecheer-GN Apparels Pvt Ltd
GST No. : 07AAJCG1072A1Z3
All Rights Reserved 2022



www.littlecheer.com



[_littlecheer_](#)



[LittleCheer](#)