

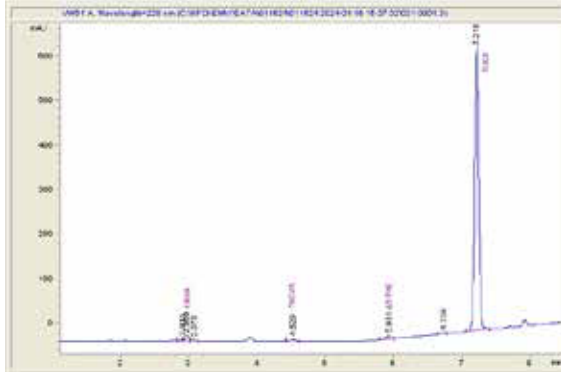
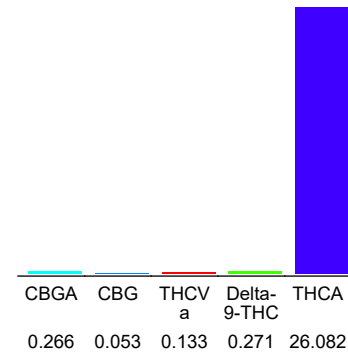
**Nano Hemp Tech Labs**

 22936 Kuykendahl Rd, Suite B  
 Spring, TX 77389

**Sample 717-011624-015**
**Lemmon Cherry Gelato**  
 Sample Submitted: 01-16-2024; Report Date: 01-22-2024

**Lemmon Cherry Gelato**

Plant Material: Hemp Flower


**Chromatogram**

**Cannabinoid Profile**

**Cannabinoid Profile by HPLC**
**0.27%**

Delta-9-THC

**0.00%**

CBD

**26.81%**

Total Cannabinoids

Cannabinoid	% wt	mg/g
CBGA	0.266	2.66
CBG	0.053	0.53
THCVa	0.133	1.33
Delta-9-THC	0.271	2.71
THCA	26.08	260.82
<b>Total Cannabinoids</b>	<b>26.81</b>	<b>268.1</b>
<b>Calculated Total THC</b>	<b>23.14</b>	<b>231.45</b>
<b>Calculated CBD Yield</b>	<b>0.00</b>	<b>0.00</b>

Calculated Total THC = Delta-9-THC + 0.877 \* THCA  
 Calculated Maximum CBD Yield = CBD + 0.877 \* CBDA

**Marin Analytics, LLC**

 250 Bel Marin Keys Blvd, Suite D4  
 Novato, CA 94949

833-321-TEST / info@marinanalytics.com

**Mike Clemmons**  
 Lab Manager