

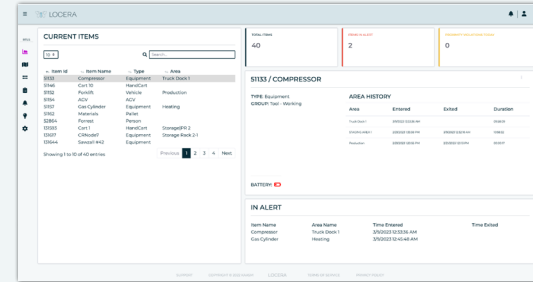
Locera is a simple, yet powerful global hub for real-time location data. Access to extensive location intelligence and history helps customers quickly achieve safety, efficiency, and regulatory results by automating the track and trace of assets, vehicle monitoring, and integration into existing systems. Locera makes it easy to know where everything is, from anywhere, at anytime.

## Instinctive User Interface

Less is more with a simple interface containing everything you need and nothing you don't. See transponder battery status, view activity in real-time, address alerts, and easily report on any data point.

### Key Features

- Complete RTLS Management
- Real-time Dashboard
- Comprehensive Reporting
- Transponder Battery Status

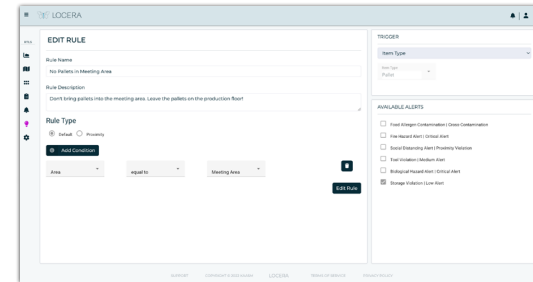


## Powerful Rules Engine

Locera's powerful geofencing rules engine can easily be configured throughout your facility. Set duration and location based alerts or even track a workflow. Know when critical tools leave an area, if safety checks have taken place, and refine your processes.

### Key Features

- X,Y,Z Geofencing
- Trigger Alerts
- Real-Time Workflow Tracking
- Asset to Area Rules

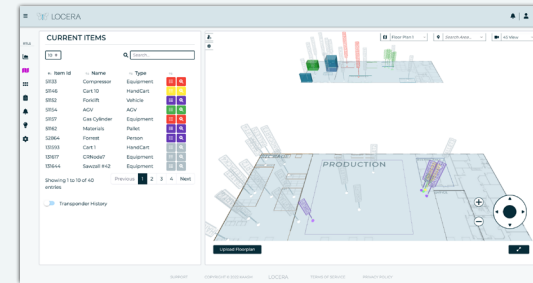


## Advanced Map UI

the Locera 3d map can scale to any size facility, making it easy to setup and visualize your system regardless of size, number of geofences, or amount of transponders. On-screen controls and presets work seamlessly for navigating with a touchscreen tablet.

### Key Features

- Multiple Floor Plan Support
- Role Based Access
- On-screen Controls
- Active Boundry Polling

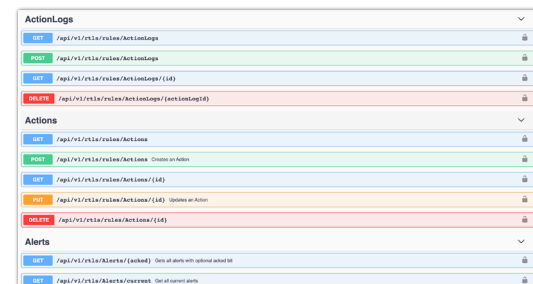


## Simple Connections

What good is data if it's stuck in a silo? With the Locera API and Webhooks, you can push or pull your RTLS data into any system or workflow you want. All the data is there and the possibilities are endless!

### Key Features

- Communicate w/ ERPs
- Open API & Webhooks
- Interface w/ SCADA Systems
- Connect to Any Business System

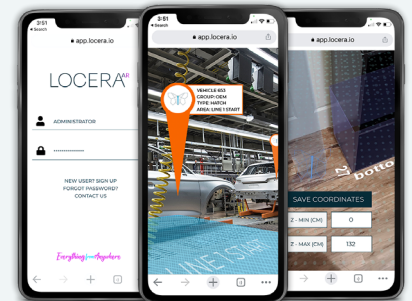


## Augmented Reality

Take Locera to the shop floor with the AR companion app. Easily visualize asset locations, areas, and alerts while walking through your facility. The AR app also makes creating singular and stacked geofences a breeze by allowing placement of boundaries in exact locations.

### Key Features

- Real-time updates
- Accurate Geofence Management
- On-Prem Compatible
- Free Companion App



LEARN MORE AND SCHEDULE A DEMO @ LOCERA.IO