

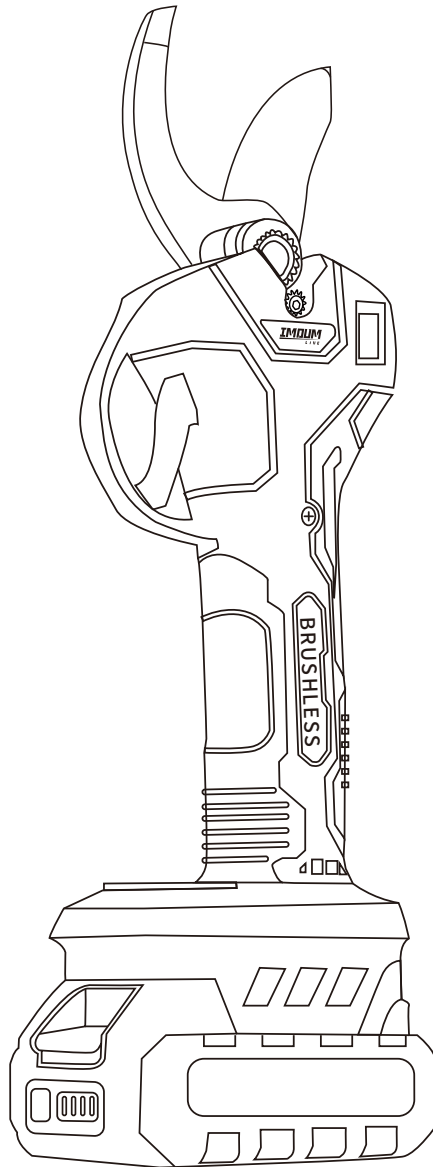
IMOUUM

USER MANUAL

L i V E

MODELS:DJ30

ELECTRIC PRUNING SHEARS



Dear Customer:

Please read all safety rules and instructions carefully before operating this tool.

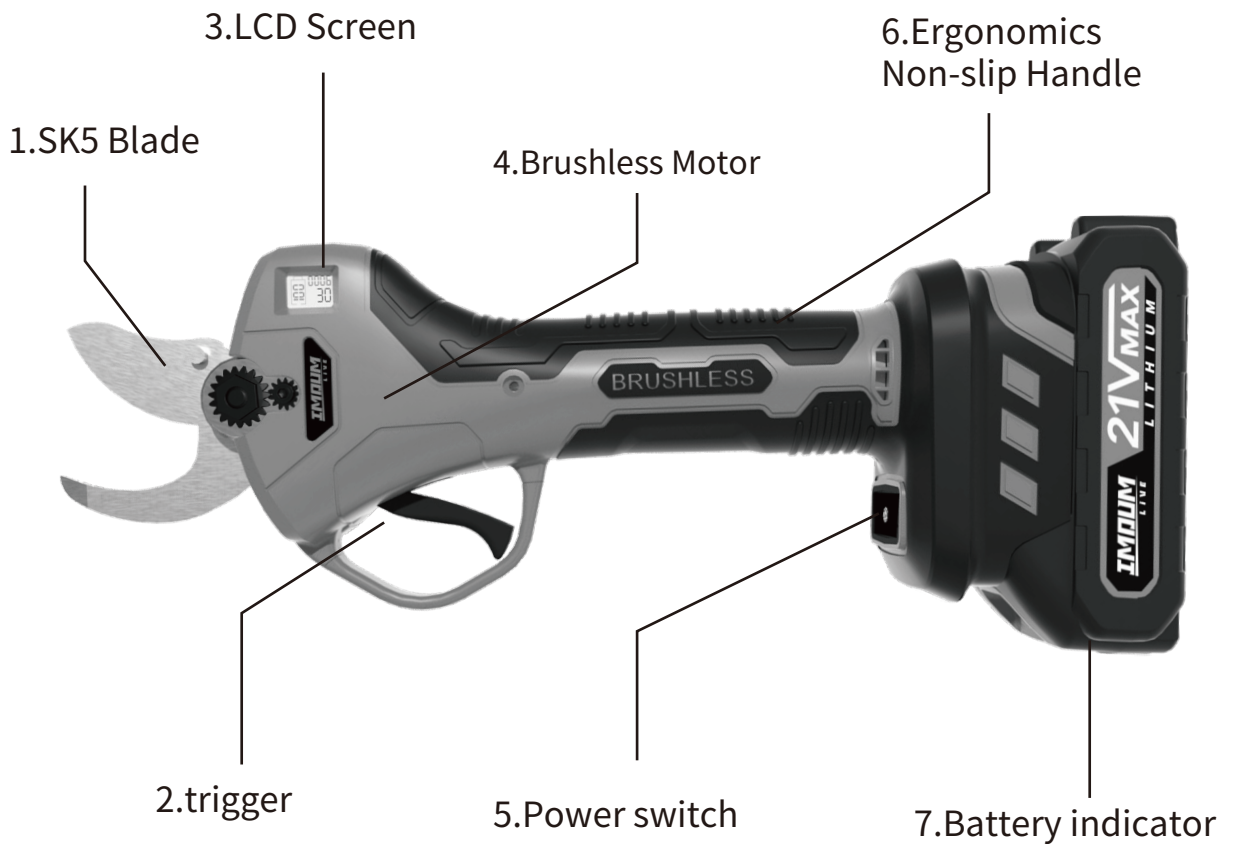
Product Questions or Concerns? Contact US: **support@imoum.com**

● English

Product Diagram	EN.01
Product Description	EN.02
Charging the Battery	EN.02
Battery Use Precautions	EN.03
Safety Precautions	EN.04
Personal Safety	EN.04
Operation	EN.05
Operation Instruction	EN.07
Faulty Operation	EN.09
Extended functions	EN.10
Maintenance	EN.11
Services	EN.11

Dear users, thank you for choosing our product!
Please read this user manual carefully to take full advantages of the product. Please keep this user manual in a safe place for future references.

Product Diagram



Product Description

Our cordless electric pruning shears package includes fixed blade, moving blade, Li-ion battery, charger, and other accessories. This pruning shears are designed for cutting work in gardens and vineyards. It is easy to use and is 8-10 times more efficient compared to traditional manual pruners. The cutting quality of the electric pruning shears is also significant higher than the manual pruners.

Electric Pruning Shears

Model No	DJD30
Cutting Diameter	10-40MM
Power	200W
Weight	1.25KG

Battery Pack

Battery pack type	Li-Ion
Voltage	21V
Capacity	2.0AH 37Wh
Charger Input	100-240V-50/60HZ 0.8A MAX
Charger Output	21V \approx 1.2A
Charging time	2H
Endurance time	6H

Charging the Battery

It is recommended to fully charge the battery before the first time use.

Insert the charger output plug into the charging jack on the battery, and then plug the charger into the power outlet. The LED indicator on the charger turns red during charging and green when the battery is fully charged.

It takes approximately 2 hours on average to fully charge the battery. The fully charged battery can support 6 hours of continuous operation.



charging jack	Status
Red	Charging
Green	Charging completed

1. It is normal that the battery and charger heat up during charging.
2. It is recommended to charge the battery every 3 months during long-term storage to preserve the full life-time of the battery.
3. It takes approximately 5 charging-discharging cycles to reach the full capacity of a new or stored battery.
4. Please do NOT charge the fully-charged battery again after a few minutes of use. This can potentially reduce the lifetime and efficiency of the battery.
5. Please do NOT use damaged batteries, disassemble the charger or the battery.
6. Do NOT charge the battery outdoor or in a humid environment.
7. The pruning shears' cutting strength decreases when the battery level is low.
8. Do NOT store the battery in a humid environment.

Battery Use Precautions

1. Do NOT charge the battery when the ambient temperature is below 32°F (0°C) or above 139°F (45 °C).
2. Please ONLY use the charger that is designated to this pruning shears. Charging the battery with off-spec chargers can cause fire.
3. Keep the battery away from any conductive objects, such as paper clips, coins, keys, nails, screws, etc.
4. Please do NOT disassemble the battery by yourself.
5. Please do NOT short-circuit the battery.
6. Please keep the battery away from heat sources during operation.
7. Please do NOT put the battery in fire or water.
8. Please do NOT use the battery if it is damaged or deformed.

9. Please do NOT perform soldering or welding on the terminals of the battery.
10. Please do NOT connect the battery directly to a power outlet or a vehicle cigarette lighter.
11. Avoid direct contact with the Li-ion cells in the battery pack.
12. Please do NOT use the battery if it is leaking.
13. Keep the battery out of the reach of children.
14. Do NOT use or store the battery under direct sunlight (or inside a vehicle under direct sunlight). Failing to do so can lead to battery overheating and burning, reducing the lifetime of the battery.
15. If your skin or clothes come into direct contact with the electrolyte, please rinse with water immediately.
16. Please keep the battery fully charged before putting the pruning shears into storage.

Safety Precautions



WARNING! Please carefully read all instructions. Failing to follow the instructions can cause electric shocks, fire, or other serious damages.

● Workplace Safety

1. Always keep the workplace well-lit. A cluttered and dark workplace may cause accidents.
2. Do NOT operate the pruning shears in an explosive, flammable, or humid environment.
3. Keep children or other personnel away from the tool during operation. Operator's distraction can lead to accidental injuries.
4. The battery socket of the pruning shears must be compatible with the power cord plug. Do NOT alter the socket or the plug.
5. Do NOT expose the pruning shears under the rain or in a humid environment, where electric shocks can occur.

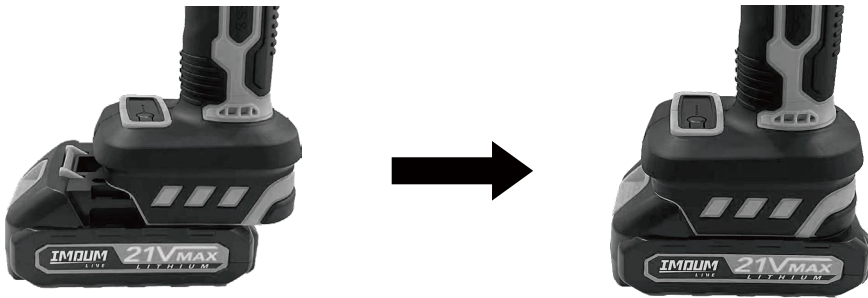
Personal Safety

1. Before operating the electric pruning shear, make sure to wear appropriate personal protective equipment, including safety goggles, earplugs or earmuffs, gloves, and durable work clothing. These gear will effectively protect your eyes, ears, hands, and body from potential injuries.
2. Before using the electric pruning shear, carefully read and understand the operation manual and safety guidelines. Familiarize yourself with the machine's features, operating procedures, and safety requirements to ensure proper and safe operation of the pruning shear.

3. When using the electric pruning shear, ensure that there are no other people or animals in the vicinity and maintain a safe distance. Clear the workspace from any obstacles to ensure your safety and the safety of others.
4. The cutting direction of the pruning shear is typically downward, so pay attention to the direction and positioning of the cut to avoid accidental injury to yourself or others. Make sure the cutting portion of the shear is away from your body and other objects.
5. After using the electric pruning shear, store it safely in a place where children cannot reach. Properly store the blades and power cord or battery to prevent damage or accidental contact.

Operation

1. Align the base of the pruning shears to the channel of the battery pack and slide the battery into the base until you hear a click. Please confirm that the battery pack is secured in place.

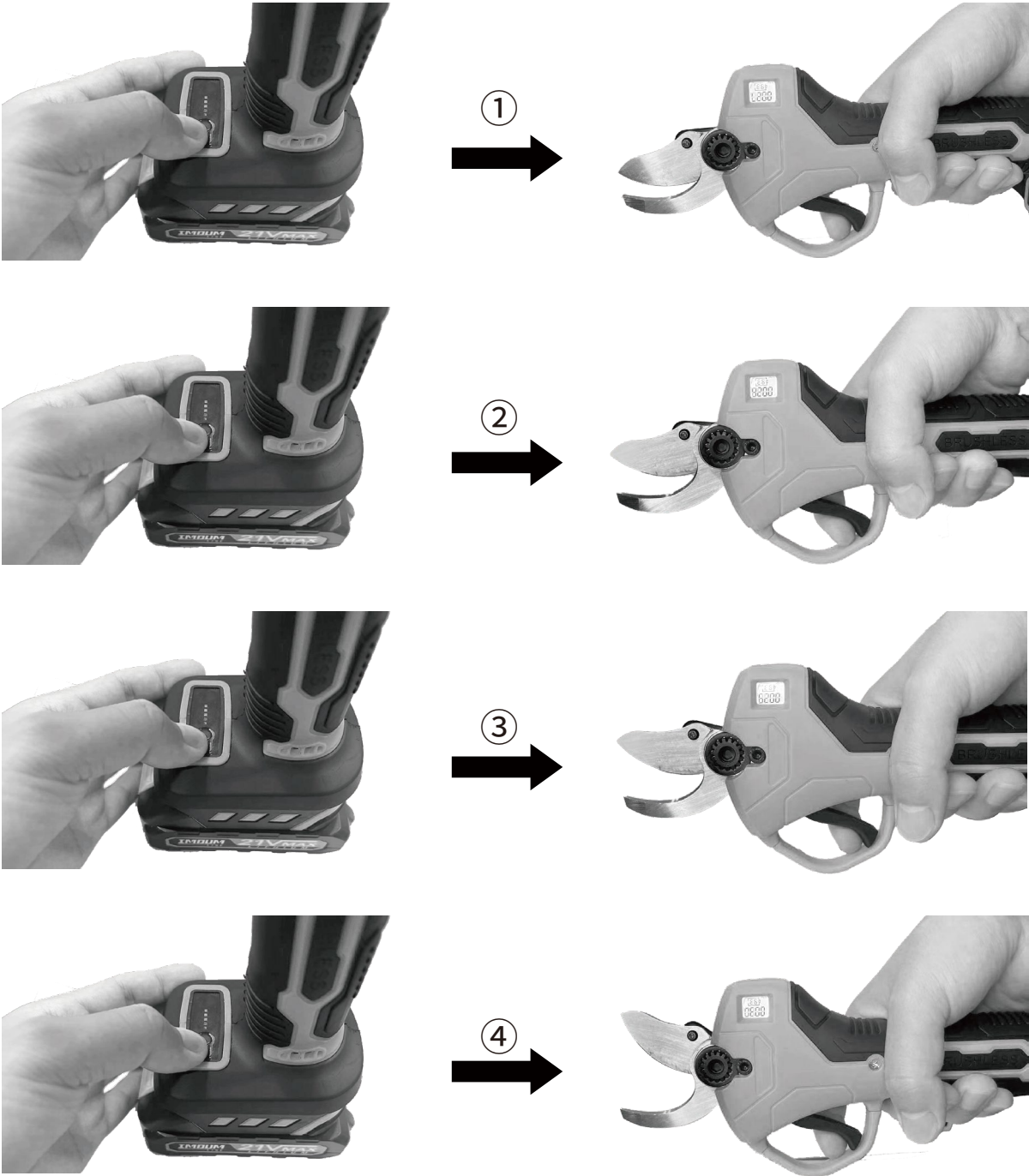


2. After installing the battery in the electric pruning shear, press the power switch of the shear (note: not a long press) and listen for the buzzer to beep. Then, press the trigger twice consecutively to wake up the pruning shear.



3. Normal operation: Pull the trigger to close the blades. Release the trigger to open the blades.
4. Please open and close the blades a few times before cutting anything to make sure that the pruning shears are functioning normally.
5. The best cutting angle of the pruning shears is 45 degrees from the branches. Please move the bottom blades close to the branches before pulling the trigger.

6. Electric pruning shears have four cutting diameter modes, which can be customized according to the size of branches in different environments, just press the power switch and hear a "beep", the indicator light will light up according to the switching diameter, and then pull the trigger, the switching of the cutting diameter mode is successful. Switching diameter mode is done in sequence from small to large diameter, again just press the power switch and pull the trigger for the diameter you want to cut.





WARNING: Keep fingers or other body parts away from the blades during operation. Failing to do so may cause personal injuries!
WARNING: Children are not allowed to operate this tool!
WARNING: Please power off the tool (press and hold the power button) and remove the battery for storage after each use. Please keep the tool out of the reach of children.

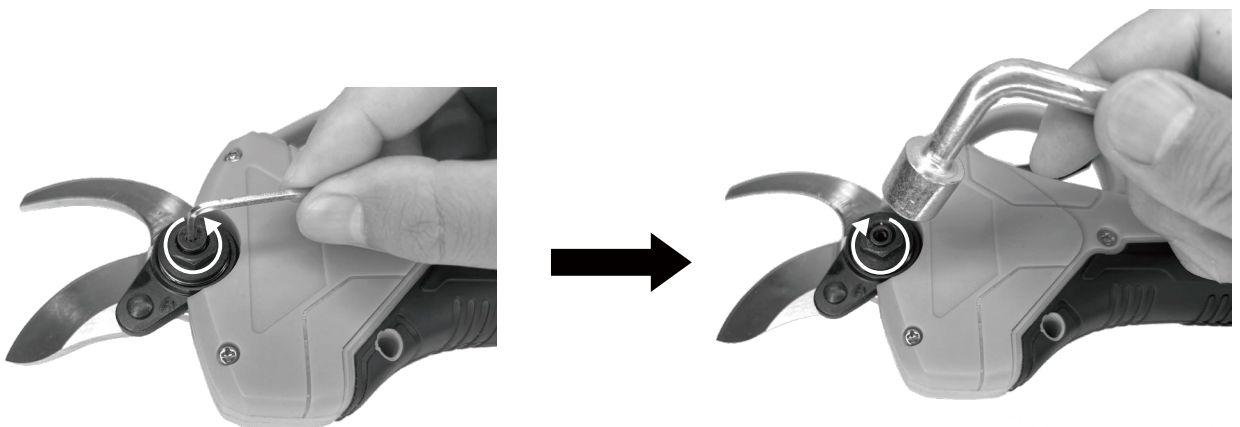
Operation Instruction

● Blades Tightness Adjustment

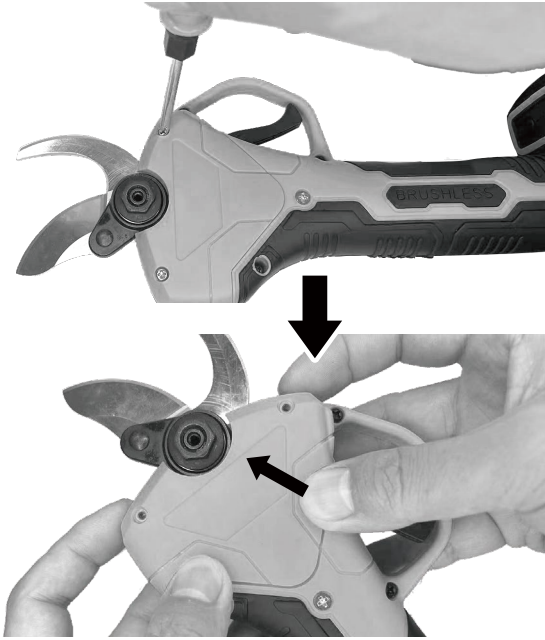


WARNING: Please power off the tool and remove the battery before the adjustment.

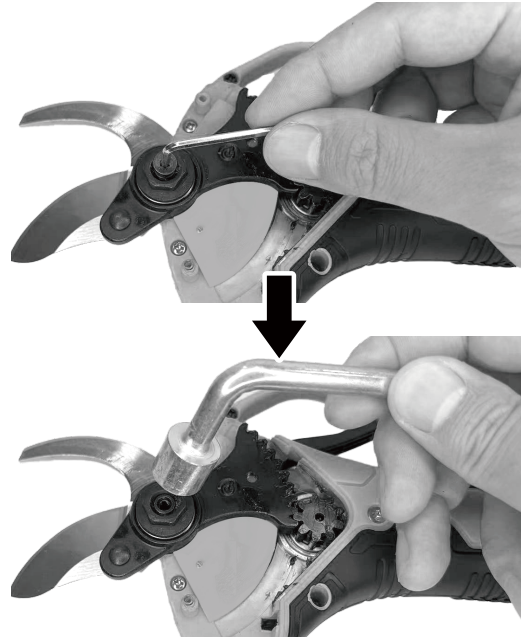
1. Check the tightness of the blades before operation. If the blades are moving side to side when they are closed, they need to be tightened. Loose blades can cause gear damage.
2. Use an Allen wrench to turn the screw counterclockwise to loosen it. Then, use a hex socket to adjust the locking nut until it reaches the appropriate state. Note: Avoid overtightening during adjustment, as it may prevent the blade from closing properly.



● Replacing the blade



1. Unscrew the screws with a Phillips screwdriver and push the blade gear guard upwards to remove the gear guard.



2. Unscrew the fixed shaft screw counterclockwise with a suitable hexagonal wrench and remove the washer, then unscrew the shaft screw counterclockwise with a hexagonal socket wrench and remove the spacer from the shaft.



3. Remove the upper blade (if the blade is too tight, tap it with an Allen socket wrench to loosen it and remove it).



4. Separate the support arm from the upper blade (if the blade is too tight against the support arm, use an Allen socket wrench to gently tap the support arm to loosen the upper blade).



To install the blades, follow the reverse order of the disassembly steps.

●Blades Lubrication



WARNING: Please Power off the tool and remove the battery before lubricating the blades.



1. Keep the blades open when adding lubricants.
2. Squeeze lubricating oil from the oil bottle into the moving area between the upper and lower blades, then make a few empty cuts to evenly distribute the lubricant. Note: Add an appropriate amount of lubricating oil, avoid adding excessive amounts.

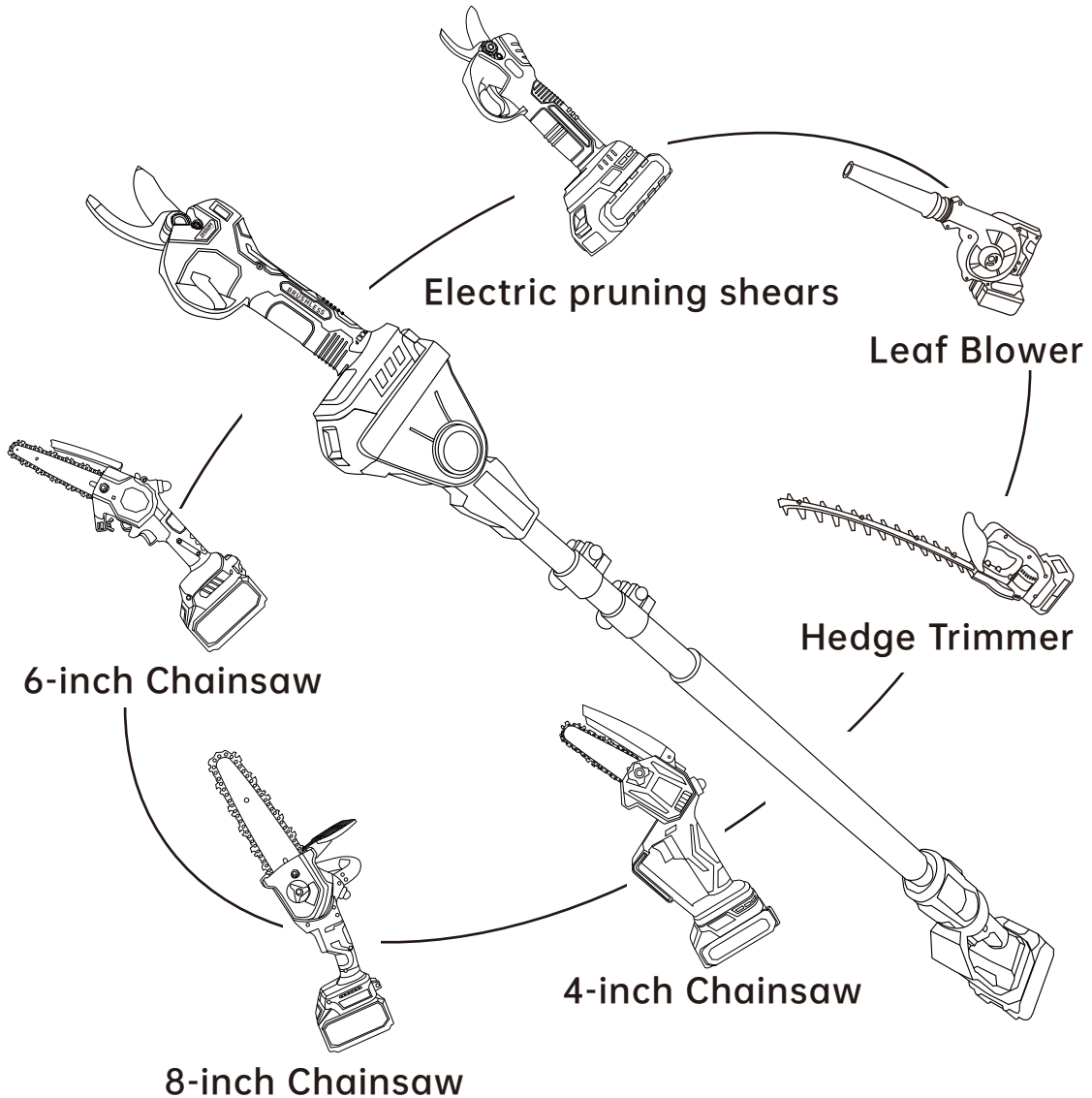
Faulty Operation

1. Please release the trigger immediately to bring the moving blade back to its opening position if the pruning shears fail to cut the branches.
2. Please release the trigger immediately to bring the moving blade back to its opening position if the branch is too hard to cut through.
3. If the battery cannot be charged, please check whether you are using the original charger that comes in the package. Please also make sure that the power outlet voltage matches the specifications on the charger.
4. Please power off the tool immediately if any electrical or mechanical malfunctions occur.

Extended functions

You can use this product along with the IMOURLIVE extension rod to achieve the best results.

Various Applications



! Note:

The package does not include the high rod, you can visit the imoumlive brand in the amazon store to buy this accessory!

Maintenance

1. Do NOT cut branches with a diameter larger than the maximum opening of the blades. Do NOT cut hard objects, such as metal, rock, or anything other than plants. If this is done, it will cause damage to the blade.
2. Please keep the pruning shears clean. You can use a clean cloth to clean the pruning shears, battery, and charger (do NOT use any cleanser that contains abrasives or solvents). Please use a soft brush to wipe off the dusts on the blades.
3. Please do NOT immerse the pruning shears, battery, or charger in any liquids.
4. Please follow the instructions in this manual to operate the tool. Do NOT use the pruning shears if the pruning shears, battery, or charger is damaged.
5. Do NOT use the tool if it is faulty. Please contact our official website immediately if a faulty tool is identified. Operating a tool when it is not functioning properly or cannot be powered off can cause serious consequences.
6. Please make sure that the pruning shears are powered off during any adjustments, accessory replacements, or storage. This protective measure can reduce the risk of the tool during an unintentional start-up.
7. The pruning shears must be stored in a toolbox out of reach of children when not in use. The pruning shears can not be operated by a personnel who is not familiar with the tool, otherwise serious accidents can occur. Operators must receive proper trainings and fully understand the operations of the tool before use.
8. Please follow the instructions in this user manual and pay attention to the workplace surroundings and the nature of the work undertaken. It is dangerous to perform cutting work that is out of the capability and specification of the tool.
9. Please clear any dirt and debris on the moving and fixed blades after each use. Please apply lubricant on the cutting edges of both blades. This ensures that the blades are well maintained and reduces the frictions during operation, which increases the lifetime of the pruning shears and the blades.
10. Please make sure that the tool is powered off and the battery is removed before cleaning the blades. Please wear protective gloves to avoid cutting yourself.
11. Please make sure that the tool is powered off and the battery is removed before polishing the blades. Please wear protective gloves to avoid cutting yourself.

Services

Every imoumlive product automatically includes a 1-year warranty. To make the customer support process quick and easy, register your product online at **www.imoum.com**. If you discover that your product is defective within the specified warranty period, please contact Customer Support via **support@imoum.com**. DO NOT dispose of your product before contacting us. Once our Customer Support Team has approved your request, please return the product with a copy of the invoice and order ID.

Support Hours: Mon-Fri, 9:00 am-5:00 pm PST/PDT

***Please have your order invoice and order ID ready before contacting Customer Support.**

IMOUM

L i V E



Contact Us: support@imoum.com

Brand: IMOURLIVE

Product name: Electric pruning shears

Model number: DJD30

Manufacture: Chongqing Dianche Technology Co., Ltd.

Address: 4-24-0082, No. 111, Fuzhuangcheng Avenue, Huixing district, Yubei District, Chongqing, 401120

EC REP

C&E Connection E-Commerce (DE) GmbH

Zum Linnegraben 20, 65933, Frankfurt am Main, Germany

E-Mail: info@ce-connection.de

FC CE UK RoHS  
MADE IN P.R.C.