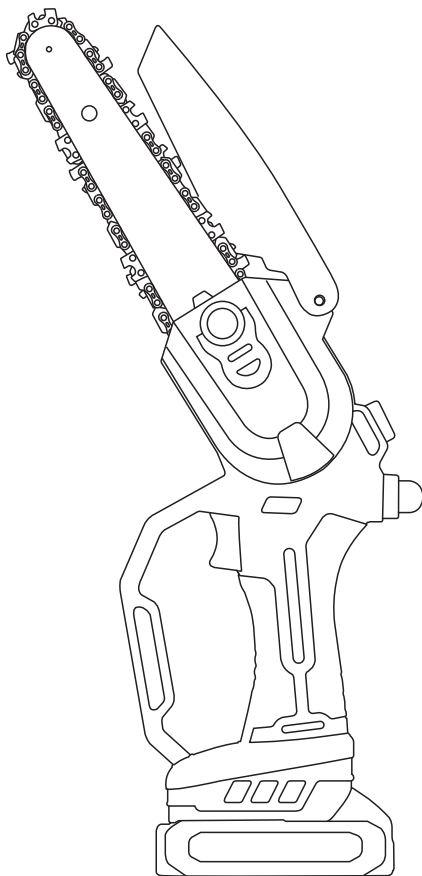


EN DE IT ES FR

# 6-Inch Mini Chainsaw

## User manual (DLJS6)



Questions or Concerns?

contact IMOUMLIVE via **support@imoum.com**

Read all safety rules and instructions carefully before operating this tool.

## • English

|  |       |
|--|-------|
| Product Information                      | EN.01 |
| Extended functions                       | EN.02 |
| Charging the Battery                     | EN.03 |
| The use and maintenance of battery tools | EN.04 |
| Safety Warnings for Charger              | EN.05 |
| Product Diagram                          | EN.06 |
| How To Lubricate The Chain               | EN.07 |
| Proper use of the chainsaw safety lock   | EN.07 |
| How to Adjust The Chain Tightness        | EN.08 |
| How to Replace The Chain                 | EN.09 |
| How to Replace The Chain                 | EN.10 |
| Troubleshooting                          | EN.11 |
| Chainsaw Safety Precautions              | EN.12 |
| Wartung und Reinigung                    | EN.13 |
| Environment                              | EN.13 |
| Services                                 | EN.13 |

# Product Information

## Intended use

This tool is suitable for gardening pruning, shrub trimming, small branch cutting, wood cutting, and is widely used in gardens, parks, farms, highways, ranches, orchards, and greenhouses.

## Technical Specifications

### 6 Inch Mini Chainsaw

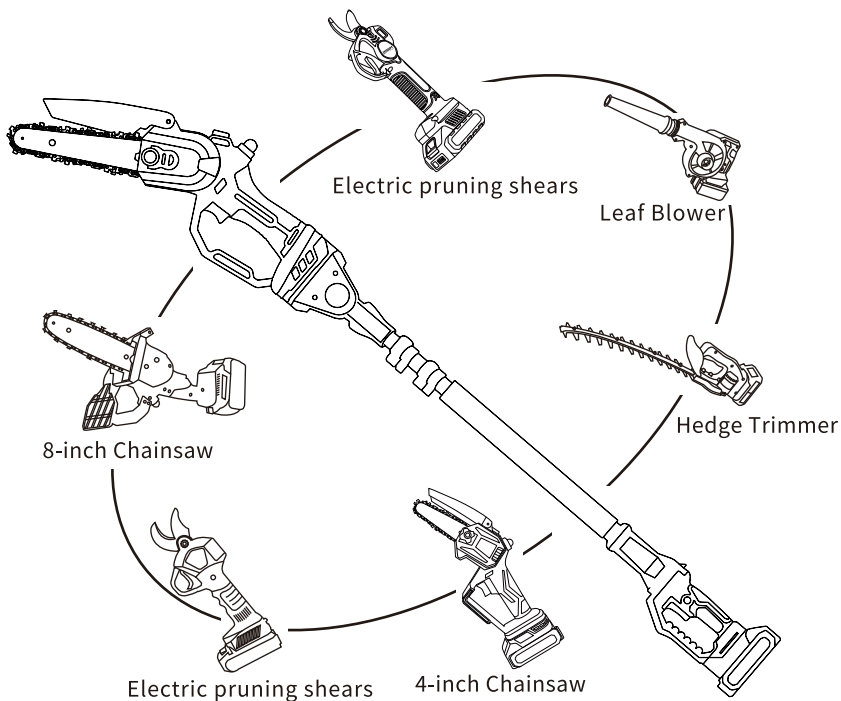
|                       |        |
|-----------------------|--------|
| Max. cutting diameter | 140mm  |
| Guide Plate Length    | 6 Inch |
| Weight                | 1.4KG  |
| Power                 | 700W   |
| Current               | 35A    |

### Battery Pack

|                   |                |
|-------------------|----------------|
| Battery pack type | Li-Ion         |
| Battery Capacity  | 21V 3.0Ah 55Wh |
| Charger Output    | 21V 1.2A       |
| Charging Time     | 2.5 H          |
| Working time      | 1 H            |

## Extended functions

This product can be combined with a tall pole to form a Pole saw, allowing you to use the most cost-effective cost to meet the needs of users in different scenarios:

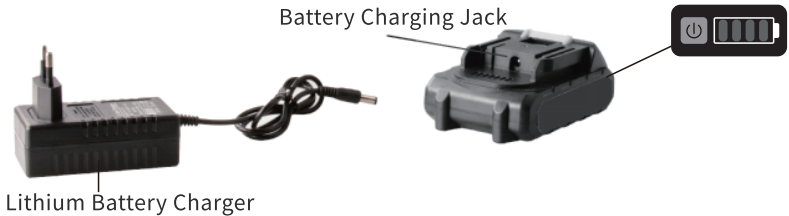


### **!** NOTE

The package does not include the high rod, you can visit the imoulive brand in the amazon store to buy this accessory!

# Charging the Battery

It is recommended to charge the new battery before using the electric saw for the first time. Insert the output plug of the battery charger into the charging socket of the battery, and then plug the charger into the power outlet. The LED indicator on the charger will turn red during the charging process and will turn green when the battery is fully charged. It takes about 2 hours to fully charge the battery.



| Indicator Light | Status       |
|-----------------|--------------|
| Red             | Charging     |
| Green           | Full Charged |

After the battery is fully charged remove the charger plug from the outlet and remove the battery from the charger.

1. It is normal that the battery and charger heat up during charging.
2. It is recommended to charge the battery every 3 months during long-term storage to preserve the full life-time of the battery.
3. It takes approximately 5 charging-discharging cycles to reach the full capacity of a new or stored battery.
4. Please do NOT charge the fully-charged battery again after a few minutes of use. This can potentially reduce the lifetime and efficiency of the battery.
5. Please do NOT use damaged batteries, disassemble the charger or the battery.
6. Do NOT charge the battery outdoor or in a humid environment.
7. When the battery is low, the cutting strength of the electric saw will decrease, which is normal.
8. Do NOT store the battery in a humid environment.

## The use and maintenance of battery tools

1. Try to use the battery provided by the manufacturer to connect the device to use, to prevent the use of other batteries lead to the device can not work properly, or even can burn the device.
2. Try to use the charger specified by the manufacturer for charging. charger suitable for one battery pack may create a fire hazard when used with another battery pack.
3. Do not disassemble the battery pack to prevent damage to the battery or even the risk of short circuit.
4. Protect the battery from heat, such as continuous strong sun-light, fire, water and moisture. Prevent the danger of explosion.
5. Use the chainsaw only with specifically designated battery packs. Use of any other battery packs may create a risk of injury and fire.
6. When the battery pack is not in use, keep it away from other metal objects, like paper clips, coins, keys, nails, screws or other small metal objects that can make a connection from one terminal to another. Shorting the battery terminals together may cause burns or fire.
7. Under abusive conditions, liquid may be ejected from the battery, please avoid contact. If contact accidentally occurs, flush with water. If liquid contacts eyes, seek medical help immediately. Liquid ejected from the battery may cause irritation or burns.



### **CAUTION! RISK OF EXPLOSION!**

Never charge non-rechargeable batteries!  
Protect the rechargeable battery from heat, such as continuous strong sun-light, fire, water and moisture.  
Prevent the danger of explosion.

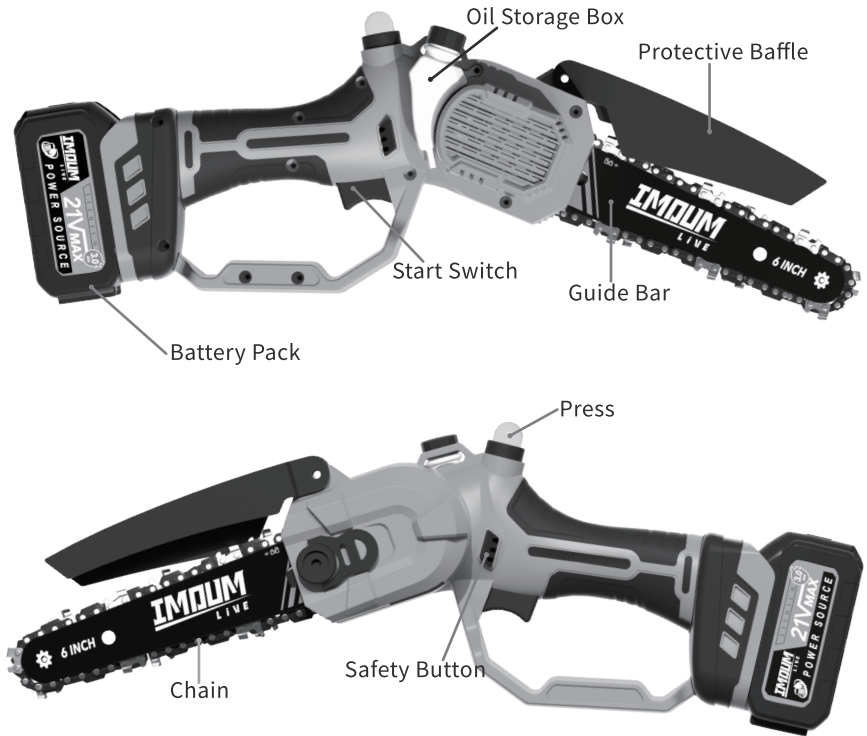
## Safety Warnings for Charger

- Do not allow any liquid to come into contact with the charger. Danger of electric shock may occur.
- Do not place tools or chargers near the sink, washbasin, toilet, or any other places near water.
- Do not spill liquid of any kind on the chainsaw or the charger. Doing so may short out parts, cause damage to the product and create the risk of fire or electric shock.
- The most suitable temperature to charge the battery packs are between 68°F - 77°F. During charging, batteries must be placed in well ventilated area.
- The chainsaw is not to be used by persons (including children) with reduced physical, sensory or mental capabilities, or lack of experience and knowledge unless they have been given supervision instructions.
- Children must be supervised not to play with the appliance.
- Do not recharge non-rechargeable batteries!

# Product Diagram

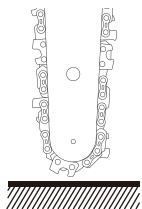
## ⚠ NOTE

Only insert the rechargeable battery once the device is completely assembled. If the device is switched on accidentally, there is a danger of injury.



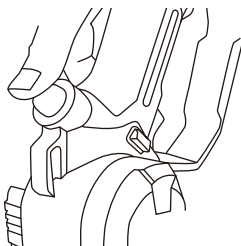


## How To Lubricate The Chain



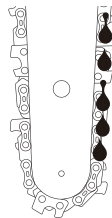
①

Vertical Ground



②

Press the Oil Box

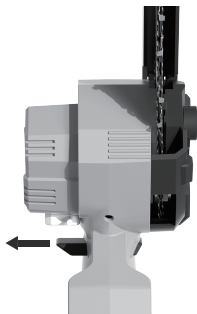


③

Lubrication of chains

1. Hold the chainsaw vertically with the blade facing down and press the Oil Box once to allow the lubricant to flow along the chain.
2. Wait for the lubricant to spread along the chain, then start the chainsaw and idle twice.

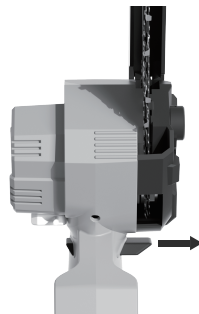
## Proper use of the chainsaw safety lock



UNLOCK



LOCK



UNLOCK

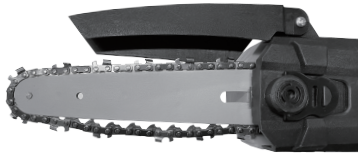
### NOTE

When not using the chainsaw, please move the safety lock to the "Lock" position to prevent accidental injuries.

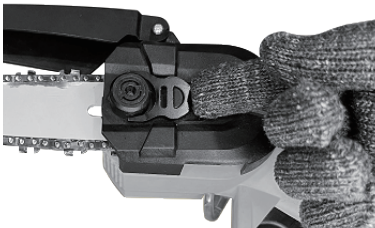
### Our Safety Switch Advantages:

1. It can be easily operated by users, whether they prefer using their left hand or right hand.
2. Our chainsaw only requires the safety lock to be released, allowing the device to be operated by simply pressing the "Start" button. This reduces hand fatigue and improves work efficiency compared to traditional safety locks.

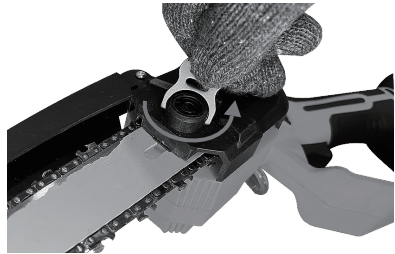
## How to Adjust The Chain Tightness



If the chain comes loose during use, follow the steps below to adjust the chain.



1. Lift up the cover nut handle.



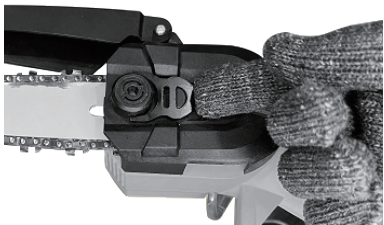
2. Rotate the nut counterclockwise to loosen it, and the chain will automatically lock in place (no need to remove the nut, just loosen it). After the chain is automatically locked, tighten the nut clockwise.

### NOTE

When the chain cannot be automatically tightened, it is necessary to check if there are wood chips or foreign objects stuck between the motor gears and the chain. Please clean them thoroughly before readjusting.

# How to Replace The Chain

## Removing the chain



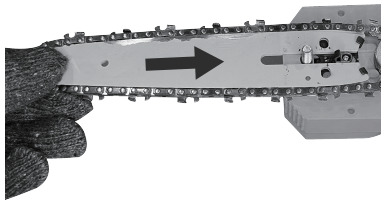
1. Lift up the cover nut handle.



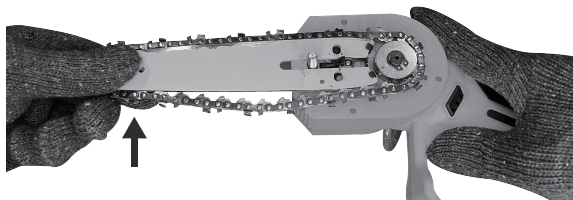
2. Rotate the nut counterclockwise.



3. When removing the cover plate, lift the mudguard upward to open it.



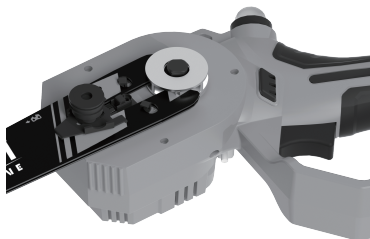
4. Wear gloves, press the saw guide firmly, and push it towards the motor until you hear a "click" sound.



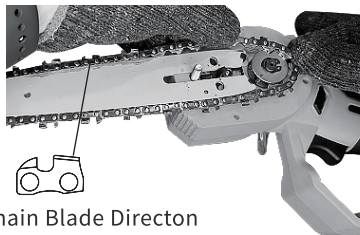
5. After the guide bar is loose, the chain can be taken out directly.

# How to Replace The Chain

## Install the chain

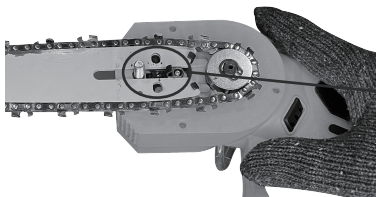


1. Clean the motor to ensure that there is no debris.



Chain Blade Director

2. Install the guide plate and chain to ensure that the direction of the chain blade is correct.



lock button

3. After installing the chain, press the chain lock button to the right, and the guide pin will automatically lock the chain.

### **! NOTE:**

Keep your fingers away from the chain and guide bar area when pressing the latch to prevent pinching. Also make sure there are no foreign objects between the chain and the guide bar while pressing the latch.



4. When covering the cover plate, lift up the mudguard and then put the cover plate in place.



5. Make sure the cover plate is in a tightly closed state before tightening the nut clockwise.

# Troubleshooting

| Problem                                     | Possible Reason   | Possible Solution   |
|---|---|---|
| The chain is loose/ falling off/popping out | The chain is not installed in place   | When installing the chain, snap the chain into the groove of the guide plate, then toggle the shrapnel to make the chain lock automatically (Note: When toggling the shrapnel, please do not put your fingers between the guide plate and the chain to prevent pinching), and finally check whether the chain is installed. |
|   | The cover is not locked tightly causing the cover to come loose   | When installing the cover plate, you should press the cover plate with one hand to prevent loosening the misalignment, and the cover plate must be in a tight state before locking the cover plate screws.  |
|   | Excessive wood chips cause the chain to loosen  | Please clean the sawdust regularly to ensure that there are no foreign objects in the rotating parts of the chainsaw motor.   |
| Lifespan                                    | Low battery   | Need to charge  |
|   | The actual use time varies with hardness, wood diameter, and outside temperature  | /   |
|   | The performance of lithium batteries will decrease significantly in a low-temperature environment or a high-temperature environment, And duration will reduce as well | /   |
| Unable to cut wood                          | The direction of the chain blade is reversed  | Check the blade and reinstall the chain   |
| Can not pump out oil                        | The lid of the oil reservoir is too tight   | Please loosen the lid slightly to allow air circulation.  |
|   | The oiler is overfilling  | Pour out a little oil and leave 1/3 of the space in the oil reservoir to ensure the internal pressure work  |
|   | The oiler tube is bent  | Check if the transparent tube connecting the oil pot is bent, if is, it needs to be adjusted to maintain the normal flow of oil   |
| Stop working                                | Battery issue   | Check that the battery is installed in place and the battery is charged. If you have a spare battery, you can change the spare one to see if themachine is turned on  |
|   | The tool is overheating   | Continuously using the tool for a long time will cause overheating. Let the tool completely cool down and try using it again  |
| Accessories and other questions             | /   | Some accessories such as chains and batteries can be purchased separately at the IMOURLIVE store For any further assistance, directly contact our customer service. Check the cover and find our contact information there  |

## Chainsaw Safety Precautions

1. Do not forced use the chainsaw. Apply the correct power tool for your application. The correct power tool will do the job better and safer at the rate for which it was designed.
2. Do not use the chainsaw if the switch can not be turned on and off. Any chainsaw that cannot be controlled with the switch is dangerous and must be repaired.
3. Disconnect the plug from the power source and/or the battery pack from the chainsaw before making any adjustments, changing accessories, or storing chainsaw. Such preventive safety measures reduce the risk of unexpected start.
4. Store unused chainsaws out of the reach of children. Do not allow people unfamiliar with chainsaws or these instructions to operate them. Chainsaws are dangerous in the hands of untrained users.
5. Maintain the chainsaw. Check for misalignment or binding of moving parts, broken parts and any other conditions that may affect chainsaw operation. If there is damage, have the chainsaw repaired before use. Many accidents are caused by poorly maintained chainsaws.
6. Keep cutting tools sharp and clean. Properly maintained cutting tools have sharp cutting edges that are less prone to knotting and easier to control.
7. Use the chainsaw and accessories in accordance with these instructions, taking into account the working conditions and the work to be performed. Using the chainsaw for operations different from its intended use may result in hazardous situations.
8. Children should be supervised to ensure that they do not pla with chainsaws.

# Wartung und Reinigung

## HINWEIS

Before cleaning and maintenance, always switch off the chainsaw and remove the battery.

- Clean the chain carefully after each use.
- Wipe the chain with lubricating oil and spray with metal protection spray.
- Do not spray the equipment with water or break it into the water, otherwise it may cause electric shock.
- Clean the machine casings regularly with a soft cloth preferably after each use, keep the ventilator, motor room and equipment handle clean.
- Remove persistent dirt using a soft cloth moistened with soapsuds. Do not use any solvents such as gasoline, alcohol, ammonia, etc. Chemicals such as these will damage the synthetic components.

## Environment



Faulty and/or discarded electrical or electronic apparatus have to be collected at the appropriate recycling locations.

## Services

Every imoumlive product automatically includes a 1-year warranty. To make the customer support process quick and easy, register your product online at **[www.imoum.com](http://www.imoum.com)**.

If you discover that your product is defective within the specified warrant period, please contact Customer Support via **[support@imoum.com](mailto:support@imoum.com)**. DO NOT dispose of your product before contacting us. Once our Customer Support Team has approved your request, please return the product with a copy of the invoice and order ID.

Support Hours: Mon-Fri, 9:00 am-5:00 pm PST/PDT

Please have your order invoice and order ID ready before contacting Customer Support.

# **IMOUM**

---

## **L I V E**



Brand: IMOUMLIVE

Product name: Mini Chainsaw

Model number: DLJS6

WEEE-Reg.-Nr. DE 95546078

Manufacture: Chongqing Mouma Keji You Xian GongSi

Address: 4-1, 131Ha0, Tian Chi Da Dao, Ba Nan Qu,  
401320,Chongqing, China

EC REP

EU Responsible Person: C&E Connection

E-Commerce (DE) GmbH

Address: Zum Linnegraben 20, 65933, Frankfurt am  
Main,Germany

E-mail: [info@ce-connection.de](mailto:info@ce-connection.de)

Contact Us:[support@imoum.com](mailto:support@imoum.com)

FC CE UK RoHS       

**MADE IN CHINA**