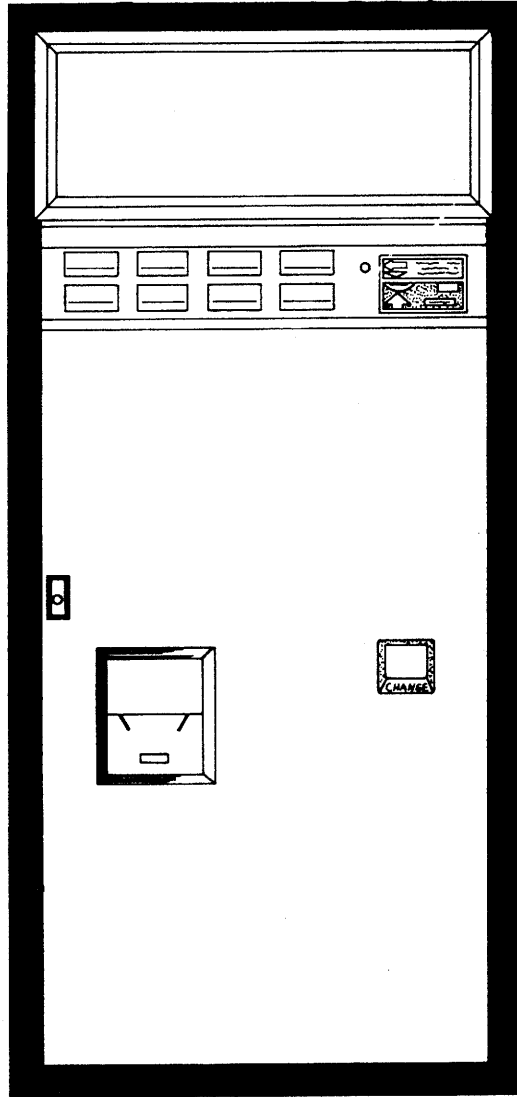


SERVICE MANUAL



**Coffee Vendor
Model: 2072T**

**WHEN ORDERING REPLACEMENT
PARTS, INCLUDE MODEL NUMBER
AND SERIAL NUMBER OF UNIT**

Table of Contents

Forward	3
Specification	3
Installation	4
Water Purifier Installation	5
Pump and Bottle Installation	6
Price Setting Instructions:	
Coincò	7
National	8
Product Loading	9
Cup Ring Adjustment	9
Product Adjustment	10
Trouble Shooting	11, 12, 13 & 14
Wiring Diagram	15
Parts Lists	
Unit Final Assembly	16
Parts List	17
Complete Cabinet Assembly	18
Parts List	19
Complete Tall Ingredient Canister Assembly	20
Parts List	21
Complete Chocolate Canister Assembly	22
Parts List	23
Complete Timer Assembly	24
Parts List	25
Hot Water Tank and Manifold Assembly	26
Parts List	27
Complete Chassis Assembly	28
Parts List	29
Cup Dispenser Final Assembly	30
Parts List	31
Complete Door Assembly	32
Parts List	33 & 34
Care and Cleaning	35

FORWARD

This manual has been written to give you the basic knowledge of operating and servicing your machine. The manual contains a trouble shooting section, parts list for ordering parts, and illustrations showing how the machine is assembled.

SPECIFICATIONS

Cabinet: Height	68"
Depth	25"
Width	28"
Shipping Weight	350 lbs.

Capacity: Vends 400 cups

Electrical: Line Source	115 volts, 60 cycles, 1 phase
Maximum Current Draw	10 amps
Service	15 amp fuse or 15 amp circuit breaker

Water Supply: Copper tubing $\frac{3}{8}$ O.D.
Plastic tubing $\frac{5}{16}$ O.D.

Coinage: Single price changer

INSTALLATION

1. This machine was thoroughly inspected before leaving the factory and the carrier has accepted this machine as their responsibility. A tip-n-tell device is on each carton to alert the customer of possible mishandling. Any damage upon arrival must be reported immediately to carrier. Request a written inspection report from claims inspector to file any freight claims for damage. File claim with carrier — NOT with manufacturer.
2. Remove knock-a-way support by inserting screwdriver and splitting the knock-a-way in two. Turn the leg levelers in as far as possible. (See Fig. A.)
3. Remove all shipping brackets, inner packing and tape.
4. Move machine to desired location.
5. Connect water supply to rear of machine using the $\frac{3}{8}$ " flare fitting, or the $\frac{5}{16}$ compression fitting (provided). If water purifier is used see page 5. If pump and bottle is used see page 6.
6. Plug power cord into proper electrical outlet. Make sure power supply is properly grounded for customer safety. The manufacturer recommends that the electrical outlet used be on its own circuit.
7. Place machine a minimum of 3" from wall for proper air circulation.
8. Machine must be level to operate correctly. With the levelers turned in as far as possible, adjust so the machine is level and does not rock or teeter on any leveler. The leveler provided may be turned from underneath or inside the cabinet.
9. This machine may be anchored to the floor by removing the snap-in caps located on the cabinet floor.
10. **WARNING:** Float must be in waste bucket. Switch must actuate (click) when top of float is a minimum of 3" below top of bucket (See Fig. B).

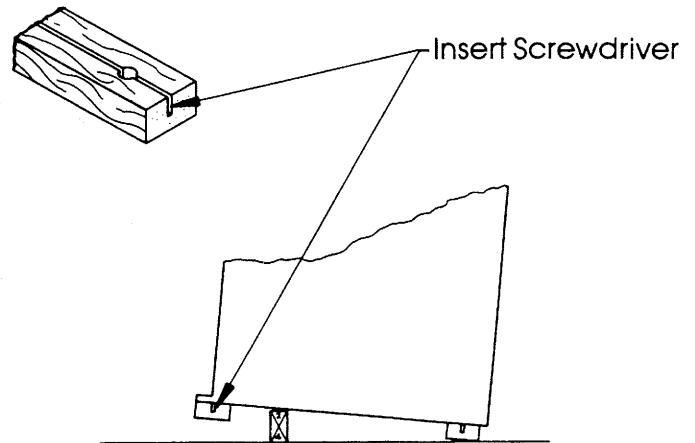


Fig. A.

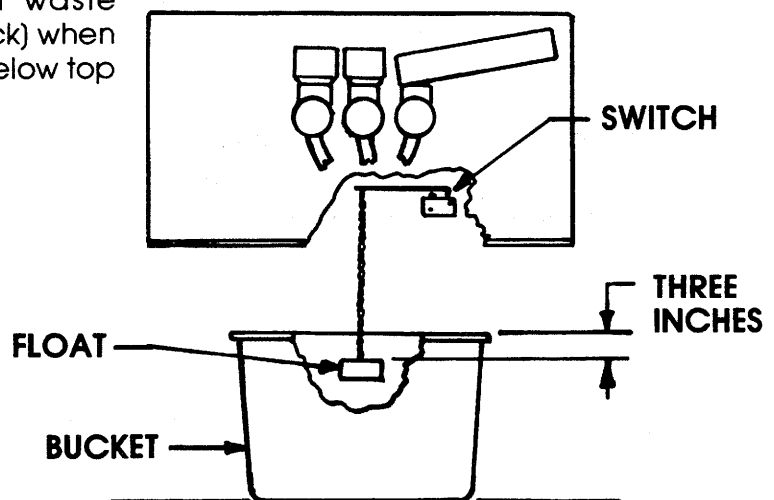


Fig. B

WATER FILTER INSTALLATION

1. Install the proper fitting in the correct place on the filter. (See Fig. A).
2. Insert two screws into cabinet mounting bracket as shown in Fig. B. **Do not** tighten down. Filter hangs in key hole slots in filter mounting brackets. Position filter and tighten screws securely.
3. Take the tubing supplied and connect the outlet on the filter to the inlet valve of the machine. Connect your water supply line to the inlet on the filter. (See Fig. C.)

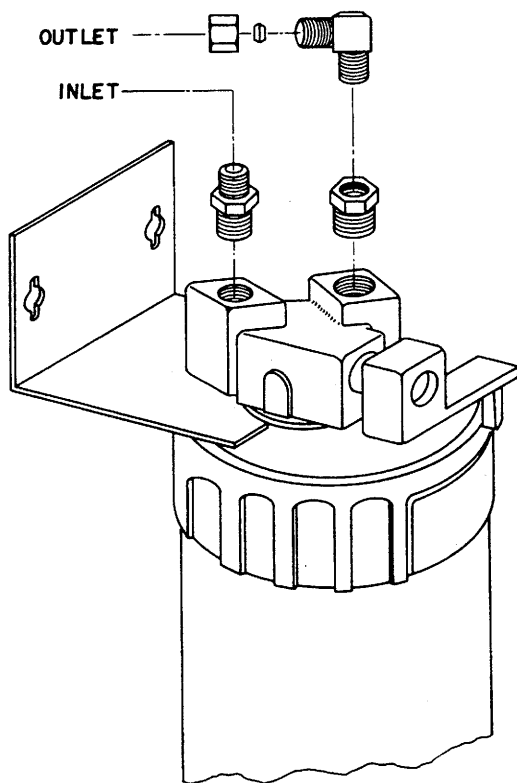


Fig. A

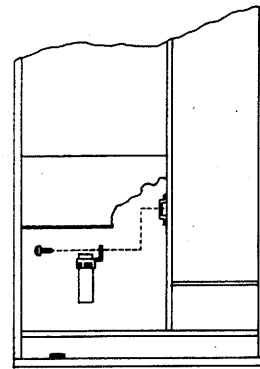


Fig. B

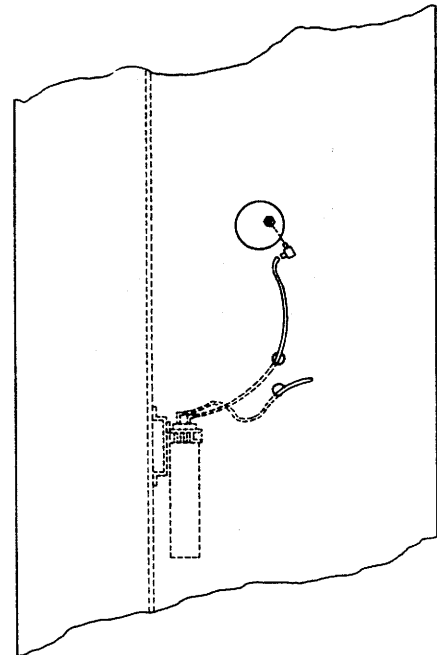
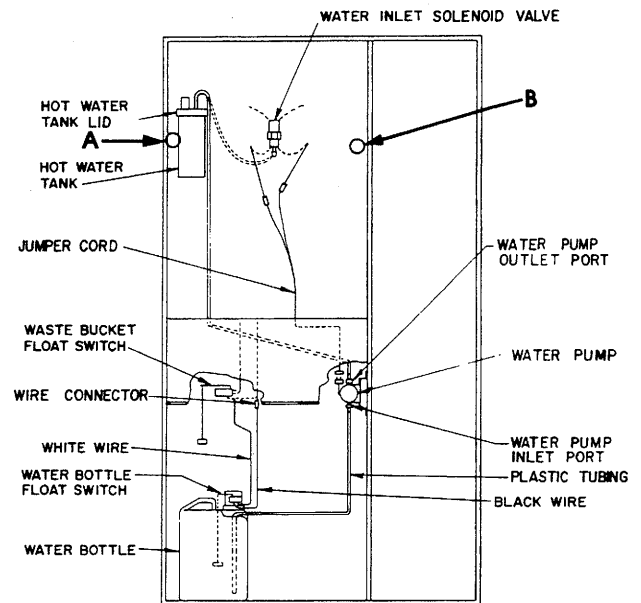


Fig. C

PUMP & BOTTLE INSTALLATION

1. Disconnect power from machine.
2. Loosen screws A & B approximately 3 turns (do not remove).
3. Lift up on chassis cover (with printed instructions on it), and remove from key hole slots.
4. Mount water pump on mounting bracket as shown.
5. Disconnect water inlet tubing from water tank lid. (This hose is not used with pump & bottle.)
6. Run new tubing supplied from water inlet on water tank lid down to water pump outlet port.
7. Run tubing supplied from water pump inlet port through hole in top of bottle till you are about 1" from bottom of bottle.
8. Disconnect all (4) wires from water inlet solenoids. Tape over terminals of (1) red-white and (1) black-white wire. (These (2) wires will not be used.)
9. Connect the remaining red-white and black-white wires to the jumper cord that attaches to the water pump.
10. Disconnect one of the black wires from the waste bucket switch and connect it to the black wire from the switch on the water bottle. The white plastic insulator must be removed from the wire, so the wire connector provided can be used to join these two wires together.
11. Connect the remaining white wire from bottle float switch to the terminal on the waste bucket switch where the black wire was disconnected.
12. Fill bottle with water.
13. Connect machine power. Pump should immediately start pumping water out of the bottle and into the hot water tank.
14. Pump should shut off as soon as hot water tank is full.
15. To insure proper operation of waste bucket switch, hold lever on switch down — machine power should shut off.
16. Refill bottle with water.
17. Close the door and make several test vends.
18. Bottle holds enough water for approximately 70 cups.



PRICE-SETTING INSTRUCTIONS

COINAGE TYPE: Coinco 5¢-\$1.50 single price changer.

1. Unplug coin mechanism from machine.
2. Remove coin acceptor from coin mechanism. (See Fig. A.)
3. Removing the coin acceptor reveals a switch module with five miniature rocker switches numbered 1 through 5. Each one of the switches corresponds to a given price as follows: No. 1 = 5¢, No. 2 = 10¢, No. 3 = 20¢, No. 4 = 40¢, No. 5 = 80¢. To set the vend price, add the value of the rocker switches in the ON position. Example: switches No. 1 and No. 2 are in the ON position; since No. 1 = 5¢ and No. 2 = 10¢ the vend price is set at 15¢. (See Fig. B.)
4. To set the change tubes to either accept or reject quarters when change tubes are empty, remove the back coverplate and check the position of the white wire on the change tube empty switch. To accept quarters the white wire should be on the piggyback terminal on the common terminal. To reject quarters the white wire should be on the normally open terminal. (See Fig. C.)

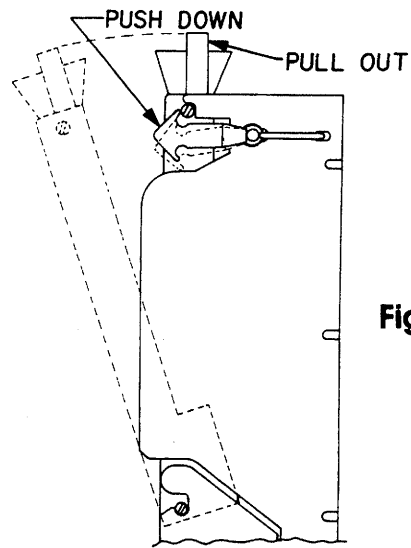


Fig. A

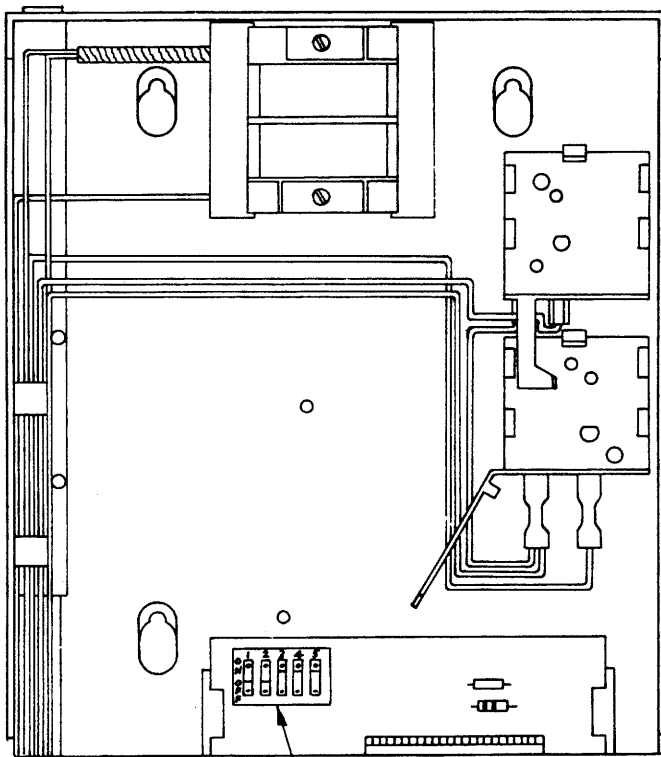


Fig. B

SWITCH MODULE

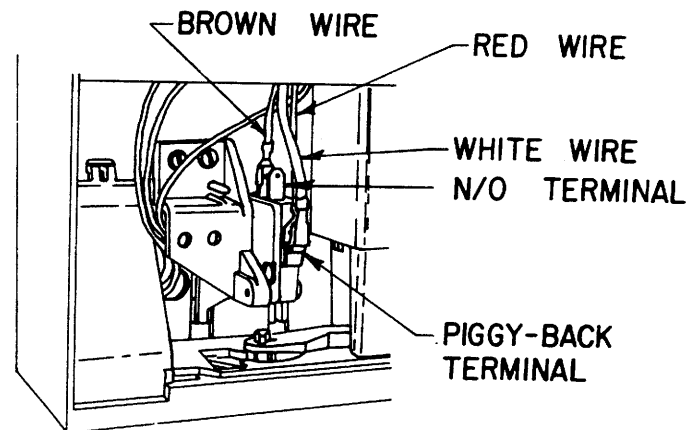


Fig. C

COINAGE TYPE: NATIONAL 5¢-\$1.50 SINGLE PRICE CHANGER

1. Unplug coin mechanism from machine.
2. Remove coin mechanism from machine by removing the coin acceptor. (See Fig. A). Then remove the holddown screw. (See Fig. B). Loosen the other three screws and lift up and out.
3. Remove the rear coverplate by removing bottom screw and lifting off.
4. To set the vend price depress the price wheel and rotate clockwise to increase the vend price, or rotate counterclockwise to decrease the vend price. (See Fig. C.)
5. The vend price is located in the vend price window. So when the desired vend price is located, release the price window, locking the vend price wheel in place. (See Fig. C.)
6. Replace coin mechanism in machine by reversing steps 1 through 3.
7. This coin mechanism will accept quarters even if change tubes are empty.

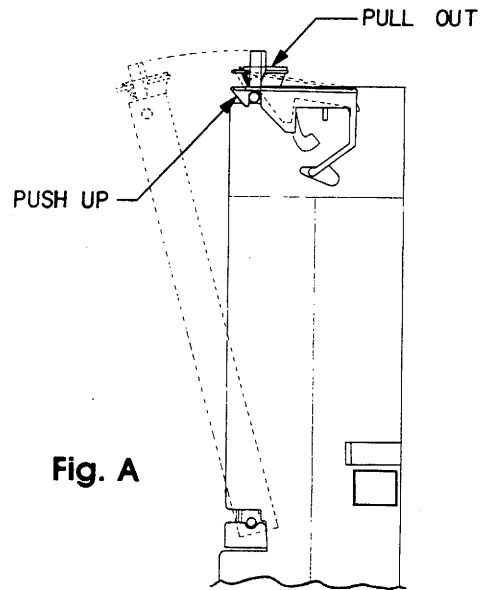


Fig. A

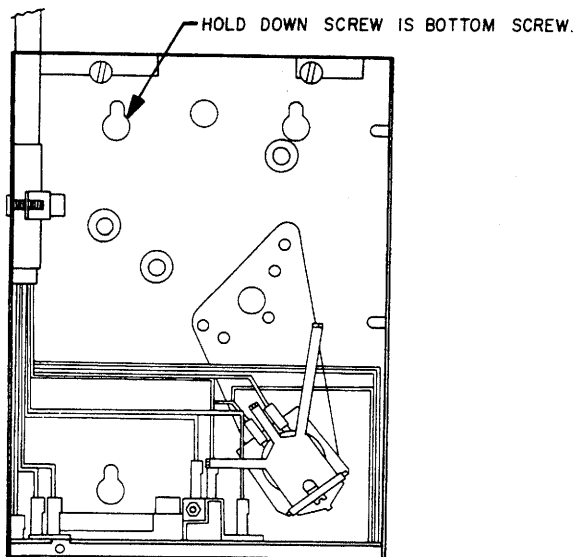


Fig. B

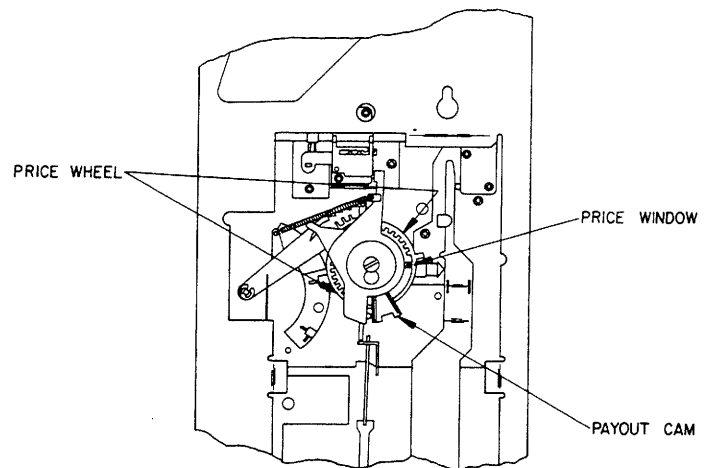


Fig. C

PRODUCT LOADING

1. Open the cup dispenser door. Then slide the cup transfer channel to the right side, and swing the cup transfer gate to the left side. Make sure that each side is held in place by a rod that comes through the back of the cup dispenser cabinet. (See Fig. A.)
2. Load outside two columns first, and load

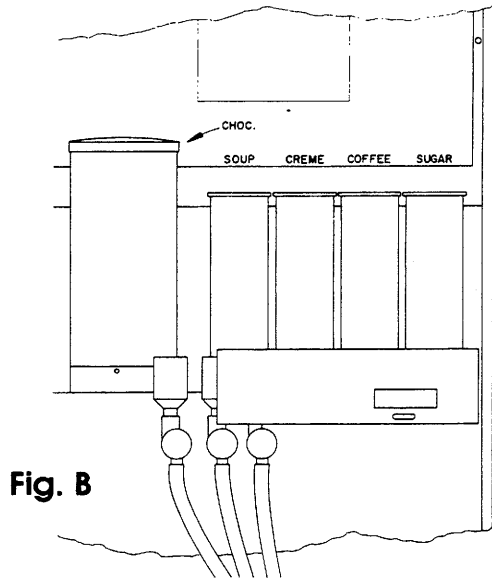


Fig. B

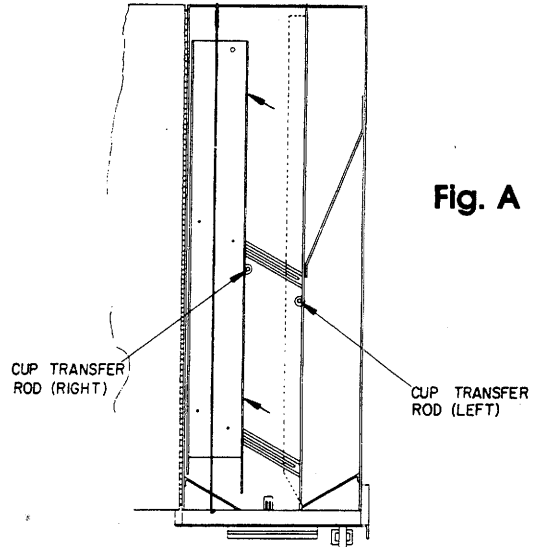


Fig. A

the center column last. On the right side the flat spring must be pressed back against the side of the cup dispenser cabinet.

3. Fill the product canister to within a few inches of the top of the canister, making sure the correct product is in the correct canister. (See Fig. B.)
4. Vend all the selection until the product is dispensed properly.

CUP RING ADJUSTMENT

1. Loosen the wing nut on the underside of the cup ring. Set the cam opening to the approximate size of the cup by rotating the outer case of the cup ring.

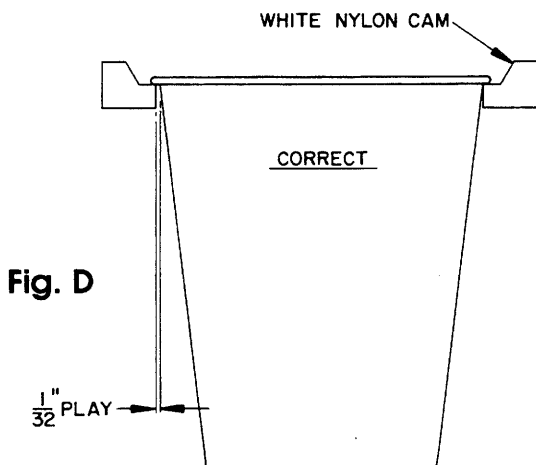


Fig. D

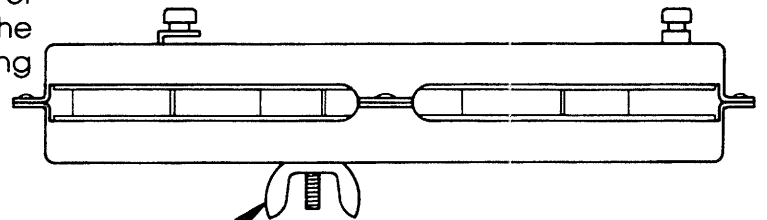


Fig. C

WING NUT

2. Drop a single cup into the ring. Adjust the ring until lip of cup rests on the surface of all six cams.
3. The cup must be free to rotate, but not to exceed $\frac{1}{32}$ " total clearance. (See Fig. D.)
4. Retighten the wing nut.

PRODUCT ADJUSTMENT

The amount of water and ingredient dispensed has been preset at the factory.

WATER ADJUSTMENT:

There are separate water adjustments for hot chocolate, soup and coffee.

Turn the adjustment screw as follows: counterclockwise to increase or clockwise to decrease.

INGREDIENT ADJUSTMENT:

The ingredients are adjusted by cams on the timer assembly. Coffee is red, chocolate is blue, and soup is green. The front cam of each pair is stationary, with the color-coded cam of each pair being adjustable.

Before loosening the wing nut, note the position of each cam. After each adjustment re-tighten the wing nut.

Coffee: (freeze dry or powder)

1. To decrease, increase number of red spaces.
2. To increase, decrease number of red spaces.

Chocolate:

1. To decrease, decrease number of blue spaces.
2. To increase, increase number of blue spaces.

Soup:

1. To decrease, decrease number of green spaces.
2. To increase, increase number of green spaces.

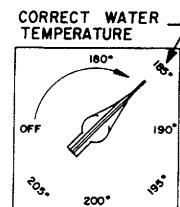
For increased amounts of powdered coffee:

1. If more coffee is desired than can be obtained in the standard position, remove the stationary cam of the red pair, and turn the cam half a turn on the square shaft. Then move the wire from the NC terminal to the NO terminal of the cam switch.
2. To decrease, decrease number of red spaces.
3. To increase, increase number of red spaces.

TROUBLESHOOTING

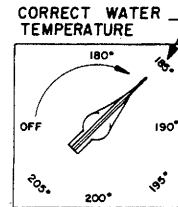
- I. Machine rejects all coins — display lamp off.
 - A. Machine unplugged — plug in machine.
 - B. Fuse or circuit breaker tripped in building electrical service — replace fuse or reset circuit breaker.
 - C. Waste bucket full — empty waste bucket.
 - D. Defective waste bucket float switch — replace switch.
 - E. Damaged or defective power cord — repair or replace.
 - F. Tripped or defective 5 amp circuit breaker — reset or replace.
 - G. Broken or disconnected black, white, black-pink, or black-white wire — connect or repair wire, or replace harness.
 - H. Disconnected or loose door harness plugs — make sure the two plugs are locked together.
- II. Machine rejects all coins — display lamp on.
 - A. Out of cups — fill machine with cups (See page 9).
 - B. Credit already established — make a selection.
 - C. Sold-out switch broken or out of adjustment — replace or readjust (See page 31, item 29).
 - D. Machine not level — level machine (See page 4).
 - E. Defective coin mechanism — repair or replace.
 - F. Dirt or foreign material in coin acceptor — clean coin acceptor (See page 35).
 - G. Defective or unplugged credit relay — replace or plug in credit relay.
 - H. Cup drop plug loose or unplugged — make sure the two plugs are locked together.
 - I. Disconnected or broken orange-black, orange-green, or black-white wire — connect or repair wire, or replace harness.
- III. Machine accepts coins, but will not vend any selection.
 - A. Defective credit relay — replace (refer to label in machine for placement).
 - B. Credit relay not holding in.
 1. Defective credit relay — replace.
 2. Defective relay reset switch on timer — replace switch. (See wiring diagram for placement.)
 3. Broken or disconnected purple-white wire — connect or repair wire or replace harness.
 - C. Timer motor not starting.
 1. Defective timer motor — repair or replace.
 2. Disconnected or broken black-red, white, or purple wire — connect or repair wire, or replace harness.
 - D. Defective coin mechanism — repair or replace.
 - E. Disconnected or broken orange-white wire — connect or repair wire, or replace harness.
- IV. Machine accepts coins, but does not vend on one or more selections.
 - A. Selection switch broken or out of adjustment — replace or readjust. (See page 33, item 29.)
 - B. Defective or unplugged selection relay(s) — replace or plug in relay(s) (Refer to label in machine for placement).
 - C. Broken or disconnected selection switch wire(s) — repair or connect wire(s), or replace harness. (See wiring diagram for wire color callout.)
- V. Machine vends properly, but pays wrong or no change.
 - A. Coin mechanism out of change — fill change tubes.
 - B. Defective coin mechanism — repair or replace.
 - C. Vend price set incorrectly — set vend price correctly. (See page 7 for Coinco, and page 8 for National.)

- VI. Coin mechanism accepts dimes and nickels but no quarters, and correct change light is on. (For Coinco only.)
 - A. Check to see if change tubes have enough change — fill change tubes.
 - B. Check to see if change empty switch in coin mechanism is activated — repair or replace.
- VII. Coin mechanism accepts dimes and nickels but no quarters, and correct change light is out. (For Coinco only.)
 - A. Check for burned out change light — replace. (See page 33, item 44.)
 - B. Check coin acceptor for foreign material in quarter track — clean coin acceptor. (See page 35.)
 - C. Quarter C.R.E.M. may be defective — repair or replace coin mechanism.
 - D. Defective coin mechanism — repair or replace.
- VIII. Coin mechanism accepts quarters, but no nickels and dimes. (Change in tubes.) (For Coinco only.)
 - A. Check coin acceptor for foreign material in the dime and nickel tracks — clean coin acceptor. (See page .)
 - B. Nickel-dime C.R.E.M. may be defective — repair or replace coin mechanism.
 - C. Defective coin mechanism — repair or replace.
- IX. Selection vends wrong product.
 - A. Canisters loaded incorrectly — load canisters correctly. (See page 9.)
 - B. Selection switches wired incorrectly — wire switches correctly. (See wiring diagram for correct position of wires.)
 - C. Canister motors wired incorrectly — wire motors correctly. (See wiring diagram for correct position of wires.)
- X. No water from dispensing line(s).
 - A. Water supply turned off — turn water supply on.
 - B. Water dump valve defective — replace. (See page 27, item 30.)
 - C. Disconnected or broken wire(s) to dump valve(s) — connect or repair wire, or replace harness. (See wiring diagram for wire colors.)
 - D. Stuck float in hot water tank — make float move freely. (See page 27, items 17, 18.)
 - E. Water tank float switch defective or out of adjustment — replace or readjust. (See page 27, item 21.)
 - F. Disconnected or broken white or white-red wire(s) to float switch — connect or repair wire(s) or replace harness.
- XI. Water does not shut off — water inlet valve.
 - A. Stuck float in hot water tank — make float move freely.
 - B. Defective tank float — replace. (See page 27, item 17.)
 - C. Water tank float switch out of adjustment or defective — readjust or replace. (See page 27, item 21.)
 - D. Defective water inlet valve — replace. (See page 29, item 30.)
- XII. Water does not shut off — water dump valve.
 - A. Defective water dump valve — replace. (See page 27, item 30.)
 - B. Timer not turning. (See Heading III, Section C.)
- XIII. Water not hot.
 - A. Thermostat set too low — set thermostat correctly.

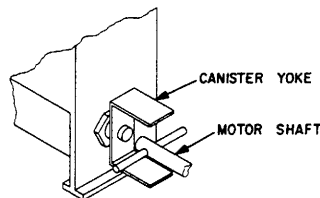


- B. Thermostat defective — replace. (See page 29, item 7.)
- C. Safety thermostat defective — replace. (See page 27, item 3.)
- D. Defective or blown 15 amp circuit breaker — replace or reset. (See page 29, item 25.)

- E. Water tank float switch defective or out of adjustment — replace or readjust. (See page 27, item 21.)
 - F. Defective heater element — replace. (See page 27, item 6.)
 - G. Disconnected or broken black-orange, black-yellow, or black-green wire(s) to thermostat — connect or repair wire(s) or replace harness.
 - H. Disconnected or broken black-green or white-black wire(s) to heater element — connect or repair wire(s) or replace harness.
 - I. Disconnected or broken white-black or white wire(s) to water tank float switch — connect or repair wire(s) or replace harness.
- XIV. Water too hot.
- A. Thermostat set too high — set correctly.



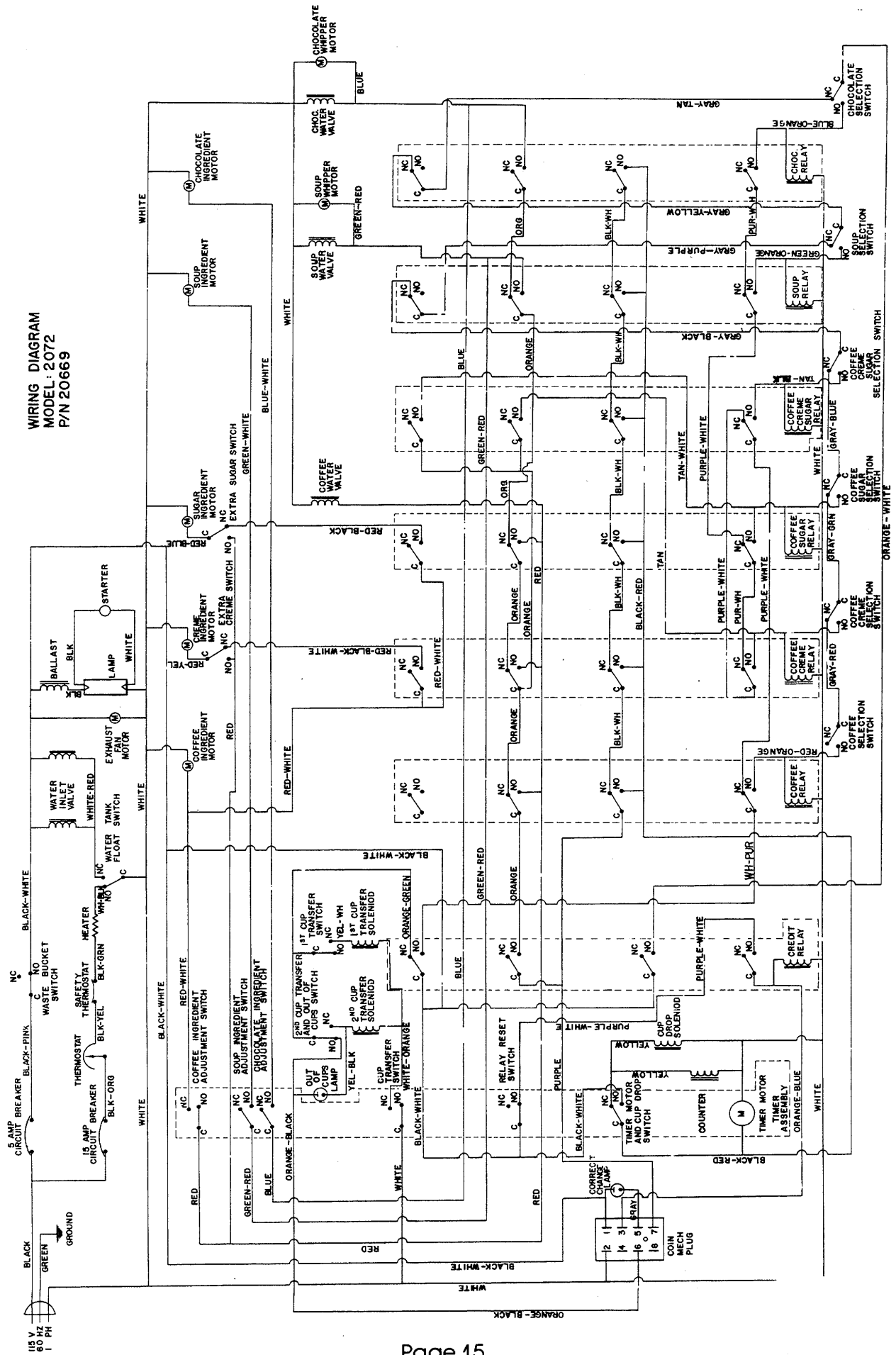
- B. Defective thermostat — replace. (See page 29, item 7.)
- XV. Machine drops cups and vends water, but no product.
- A. Timer ingredient switches defective or out of adjustment — replace or readjust. (See wiring diagram for placement of switches.)
 - B. Defective ingredient motor — repair or replace. (See page 29, item 75, 77.)
 - C. Disconnected or broken wire(s) to timer ingredient switches — connect or repair wire(s) or replace harness. (See wiring diagram for wire color and correct positions.)
 - D. Disconnected or broken wire(s) to ingredient motors — connect or repair wire(s) or replace harness. (See wiring diagram for wire color and correct positions.)
 - E. Canister is not hooked into motor correctly — install canister correctly.

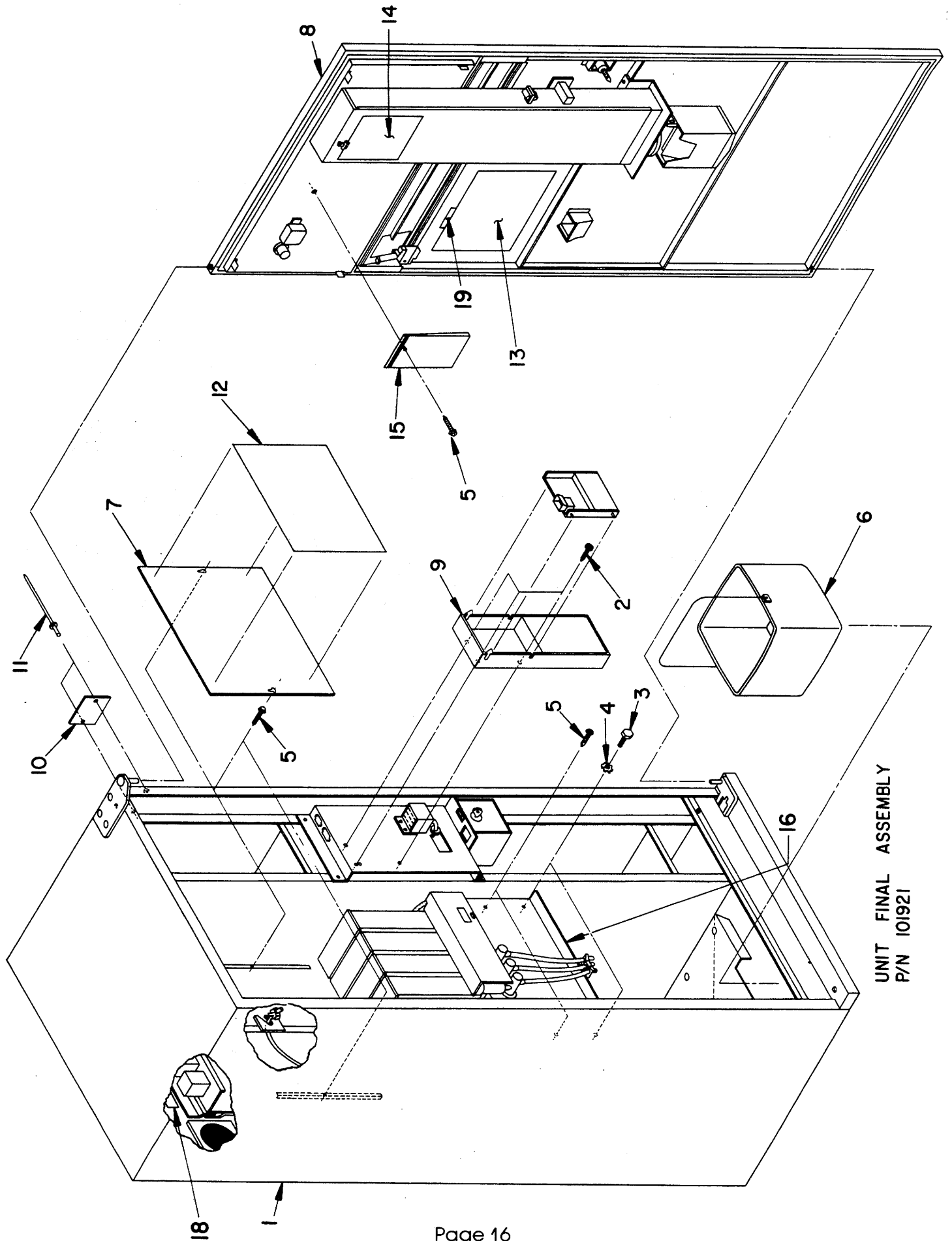


- XVI. No cups delivered.
- A. Cup sold out switch out of adjustment or defective — readjust or replace. (See page 31, item 29.)
 - B. Cups jammed in cup ring — unjam cups and make sure cup ring activates smoothly.
 - C. Cup ring out of adjustment — readjust. (See page 9.)
 - D. Cups hung up in cup drop cabinet — eliminate whatever is causing the cups to hang up.
 - E. Defective cup drop solenoid — replace. (See page 31, item 13.)
 - F. Cups trapped by premature cup transfer.
 1. Plastic tubing missing from transfer rods — install. (See page 31, item 43.)
 2. Cup transfer switch out of adjustment or defective — readjust or replace. (See page 31, item 31.)
 - G. Defective cup ring — repair or replace. (See page 31, item 19.)
 - H. Disconnected or broken yellow or black-red wire — connect or repair wire(s), or replace harness.
- XVII. Machine pre-selects one selection.
- A. Selection switch stuck, out of adjustment, or defective — make switch move freely, readjust, or replace. (See page 33, item 29.)
 - B. Defective selection relay — replace. (See label in machine for placement.)

- XVIII. Machine continues to cycle — no vend made.
- A. Timer switch defective or out of adjustment — replace or readjust. (See wiring diagram for placement.)
 - B. Timer motor coasting due to armature not disengaging — repair or replace. (See page 25, item 1.)
- XIX. Machine continues to cycle — vends are made.
- A. Credit relay defective — replace. (See label in machine for placement.)
 - B. Relay reset switch defective — replace. (See wiring diagram for placement.)
 - C. Defective coin mechanism — repair or replace.
- XX. No cups transfer.
- A. Cup transfer solenoid(s) defective — replace. (See page 31, item 21.)
 - B. Cup transfer switch defective or out of adjustment — readjust or replace. (See page 31, item 31.)
 - C. Cup transfer switch on timer defective — replace. (See wiring diagram for placement.)
 - D. Disconnected or broken orange-green, yellow-black, yellow-white, or white-orange wire-connector repair wire(s) or replace harness.

**WIRING DIAGRAM
MODEL: 2072
P/N 20669**



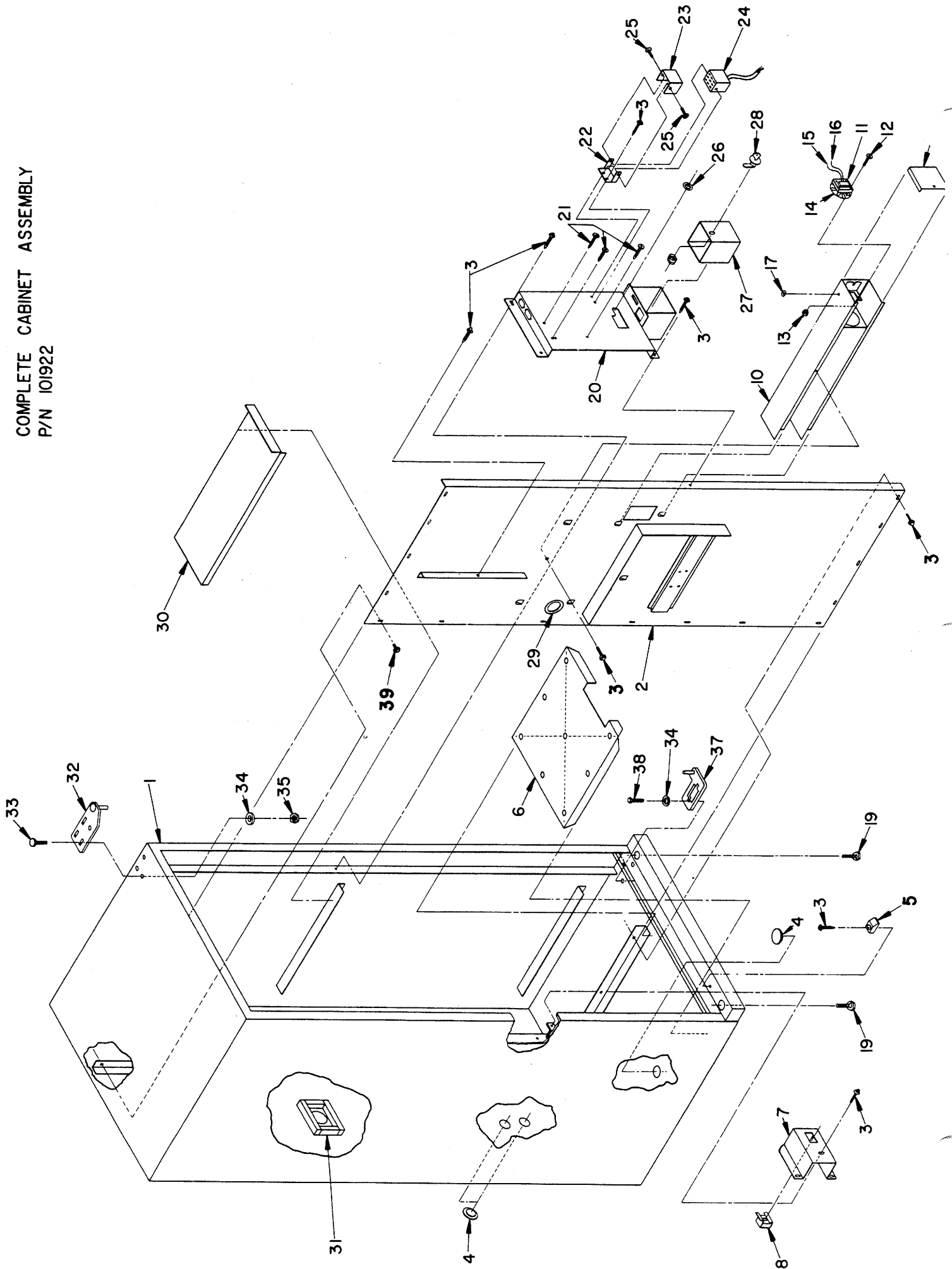


UNIT FINAL ASSEMBLY
 P/N 101921

Item	Part No.	Quantity	Description
18	206686	1	Relay Label
19	20687	1	Model Label — Blank
20	102156 (Not shown)	1	Complete Wire Harness Ass'y.
	33730	1	Fan Wire — White
	33738	1	Fan Wire — Black
	34140	1	Relay Harness
	34141	1	Tank Harness
	34142	1	Chassis Harness
	34143	1	Door Harness
	34144	1	Cup Drop Harness
	34145	1	Timer Harness
21	60108 (Not shown)	1	Elbow, 3/8 Fl x 1/4 90° Brass
22	60098 (Not shown)	1	Needle Seat Valve & Saddle Clamp Ass'y.
23	60132 (Not shown)	1	5/16 O.D. Tubing to 1/4 MPT Compression Male Elbow
24	60152 (Not shown)	1	1/4 O.D. 1/4 Pt. Flare Elbow

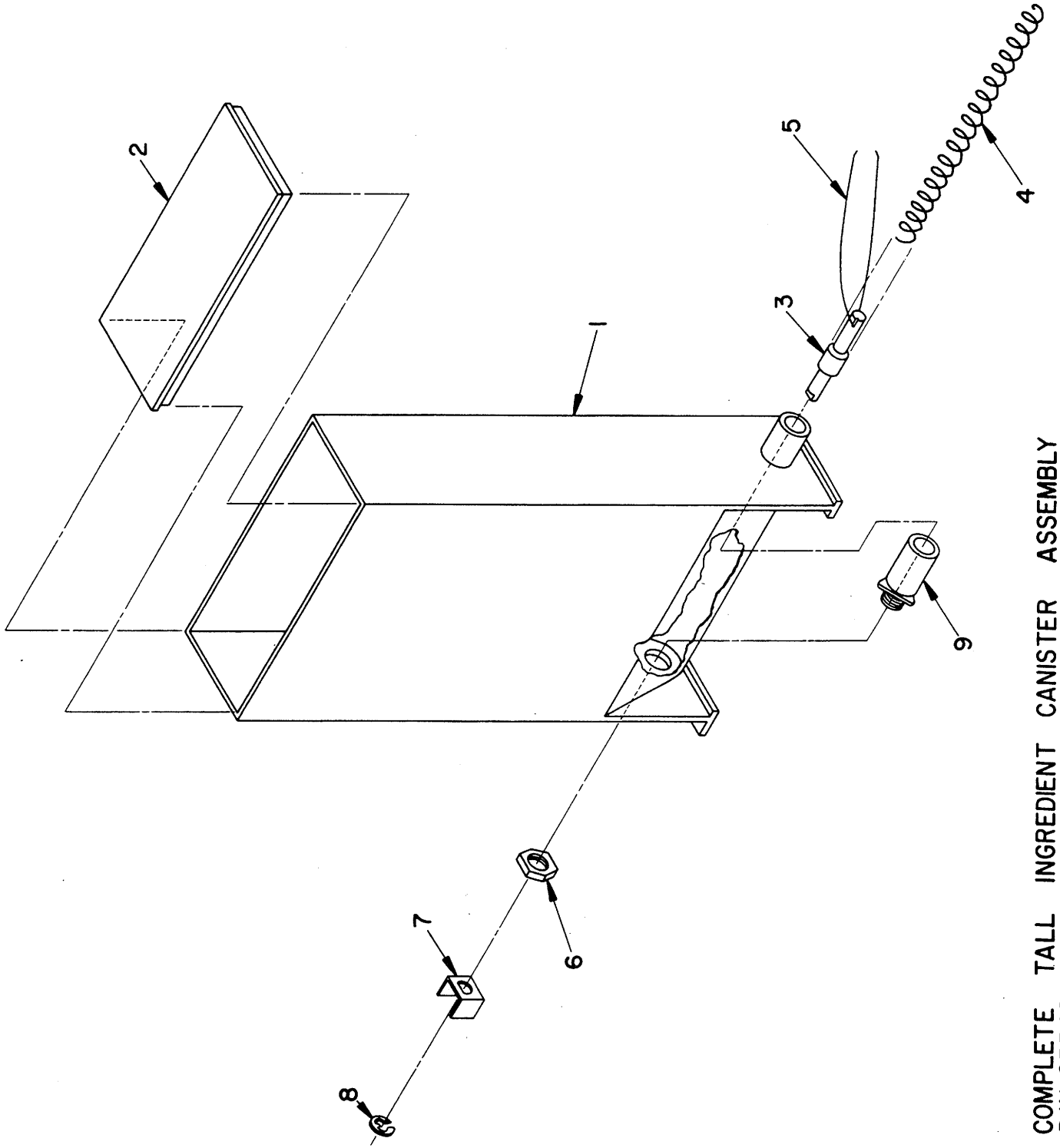
Item	Part No.	Quantity	Description
1	101922	1	Complete Cabinet Assembly
2	50180	1	#8-18 x 1/2 Phil. Pan HD. Tek
3	50434	2	#14 x 3/8 Hex HD. Type "B" S.M.S.
4	50593	2	1/4 Ext. Shake Proof Lock Washer
5	50202	4	#8-18 x 1/2 Phil. Hex Washer HD. Tek
6	60324	1	Waste Bucket
7	9733	1	Chassis Cover
8	101905	1	Complete Door Assembly
9	60358 either/or 60325	1	Colnco S-75-9800A-807 National EM5-75 Changer
10		1	Serial Plate
11	50667	2	Pop Rivet
12	20671	1	Chassis Cover Instruction Label
13	20669	1	Wiring Diagram
14	XXXXX	1	Customer Price List/Order Blank Selection & Price Label
15	102259	1	Package
16	101928	1	Complete Chassis Ass'y.
17	102250 (Not shown)	1	Service Package

COMPLETE CABINET ASSEMBLY
P/N 101922



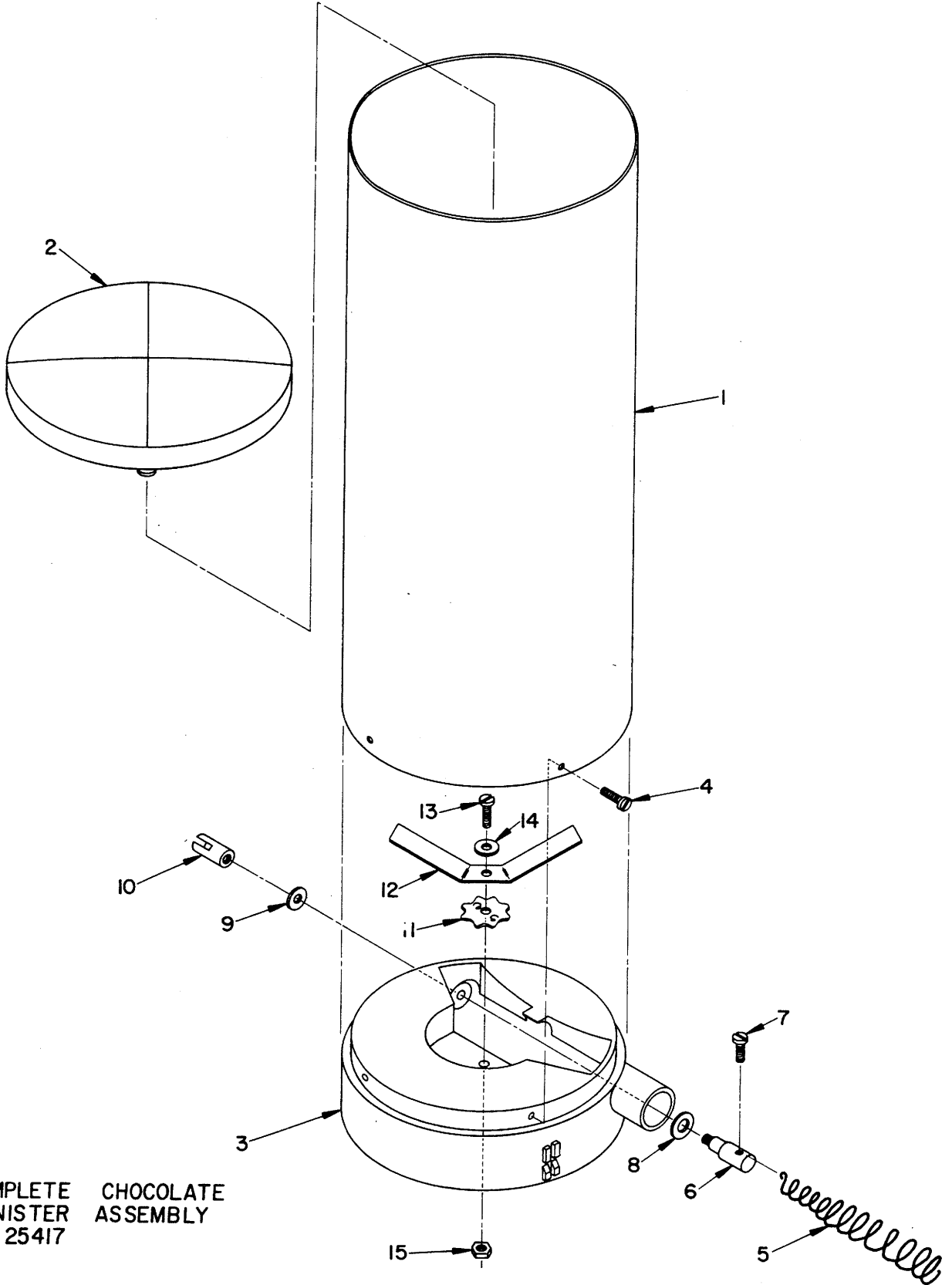
Item	Part No.	Quantity	Description
22	7127	1	Coin Mech. Plug Bracket
23	33526	1	Jones Plug Insulator
24	33607	1	Female Plug
25	50112	2	#6-32 x 1/4 Phil. Pan HD. M.S.
26	33672	1	Grommet
27	101137	1	Coin Box Weld Assembly
28	20-0253-XXX	1	Coin Box Lock
29	33652	4	Grommet Material
30	9731	2	Cabinet Storage Shelf
31	96-0266-000	24"	Foam Tape
32	101127	1	Upper Hinge Stake Assembly
33	50099	3	5/16-18 x 3/4 Carriage Bolt
34	18-614-000	3	5/16 Lock Nut Washer Plf'd.
35	50066	3	5/16 Hex Nut Plf'd.
36	50371 (Not shown)	1	1/4-14 x 3/4 Ind. Hex Washer HD. Tek
37	60-0018-000	1	Lower Hinge Stake Assembly
38	50072	2	5/16-18 x 3/4 Hex HD. Bolt
39	50420	12	#8 x 1/4 Phil/Hex Washer HD. Type "B"
40	102323 (Not shown)	1	Exhaust Fan Motor Assembly — Complete

Item	Part No.	Quantity	Description
1	101906	1	Cabinet Weld Assembly
2	102171	1	Cabinet Divider Weld Assembly
3	50202	15	#8 x 18 x 1/2 Phil/Hex Washer HD. Tek
4	25-0135-002	4	Floor Plug 1" Dia.
5	25610	1	Door Glide
6	9740	1	Cabinet Sub-Floor
7	9741	1	Lock Nut Bracket
8	50760	1	1/2-13 Lock Nut
9	101926 (Not shown)	1	Complete Fan Duct Base Ass'y.
10	102228	1	Turbo-Flow Duct Weld Assembly
11	33651	1	Fan Motor
12	50145	2	#6-32 x 7/8 Plll. Round HD. M.S.
13	50505	2	#6-32 Twin Whiz Nut
14	33844	1	Fan Blade (Part of P/N 33651)
15	33738	1	Fan Wire
16	33730	1	Fan Wire (Neutral Harness)
17	33671	1	Grommet
18	9313	1	Duct Cap
19	60310	4	Leg Levelers
20	101944	1	Coin Mech. Mfg. Brk't. Weld Ass'y.
21	50180	3	#8-18 x 1/2 Phil. Pan HD. Tek



COMPLETE TALL INGREDIENT CANISTER ASSEMBLY
 P/N 25548

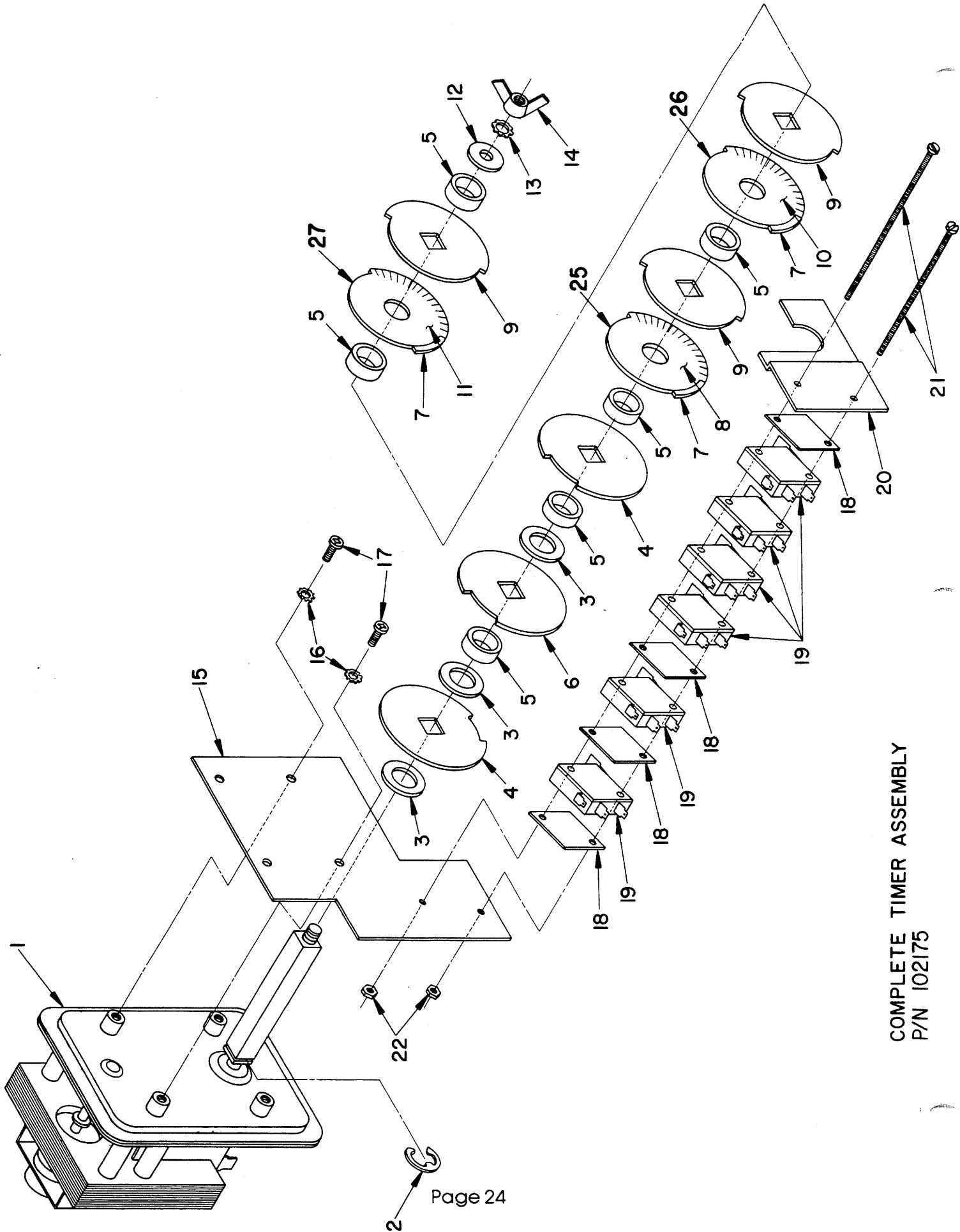
Item	Part No.	Quantity	Description
1	25542	1	Ingredient Canister – Tall
2	25515	1	Lid
3	60427	1	Stub Shaft
4	60428	1	Auger Spring
5	25509	1	Agitator Spring
6	25514	1	Nut
7	60429	1	Clevis
8	50596	1	E-Ring Retainer
9	25669	1	Nylon Bearing



COMPLETE CHOCOLATE
 CANISTER ASSEMBLY
 P/N 25417

Item	Part No.	Quantity	Description
1	25516	1	Chocolate Canister
2	25517	1	Lid
3	25518	1	Canister Base
4	50239	3	#8-32 x 3/8 Phil. Pan HD. Type "23" Self Thread
5	25519	1	Auger Spring
6	25520	1	Stub Shaft
7	25526	1	#6-32 x 3/8 Phil. Pan HD. Type "23" Self Thread
8	25524	1	Stainless Steel Washer
9	25525	1	Brass Washer
10	25521	1	Yoke
11	25522	1	Agitator Sprocket
12	25523	1	Agitator
13	25527	1	#10-32 x 5/8 Phil. Pan HD. M.S.
14	25528	1	Flat Washer
15	25529	1	#10-32 Hex Nut

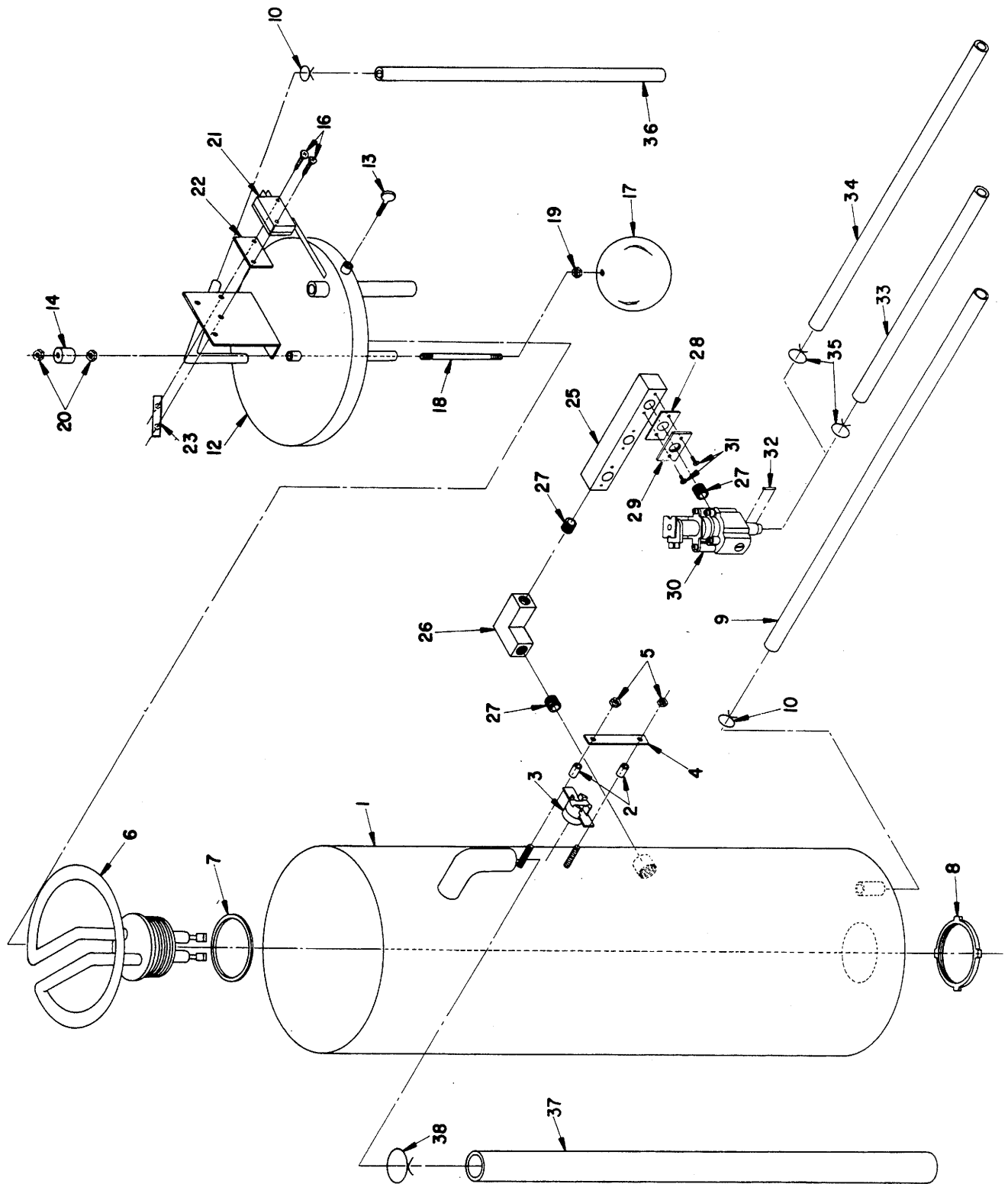
Item	Part No.	Quantity	Description



COMPLETE TIMER ASSEMBLY
 P/N 102175

Item	Part No.	Quantity	Description
1	34148	1	Timer Motor (Long Shaft)
2	50758	1	Shaft Retainer Ring
3	50608	3	1" O.D. x 17/32 I.D. Timer Spacer Washer
4	5708	2	Timer Cam
5	30117	6	Cam Spacer
6	7709	1	Clearing Cam
7	5731	3	Ingredient Adjustable Cam
8	20078	1	Label — Timer Cam (GREEN)
9	5748	3	Ingredient Stationary Cam
10	20079	1	Label — Timer Cam (BLUE)
11	20077	1	Label — Timer Cam (RED)
12	50594	1	¼ Flat Wrought Washer
13	50593	1	¼ Ext. Shake Proof Lock Washer
14	50530	1	¼ — 20 Wing Nut
15	8940	1	Timer Switch Bracket

Item	Part No.	Quantity	Description
16	50585	2	#8 Ext. Shake Proof Lock Washer
17	50240	2	#8-32 x 3/8 Phil. HD. M.S.
18	33706	4	Switch Insulator
19	33593	6	Timer Switch
20	7688	1	Timer Shaft Bracket
21	50062	2	#4-40 x 27/8 Slotted RD. HD. M.S.
22	50517	2	#4-40 Hex Nut
23	34145 (Not shown)	1	Timer Harness (Part of Complete Wire Harness Ass'y. P/N 102156)
25	100305	1	Ingredient Adjustable Cam Ass'y. (Green)
26	100306	1	Ingredient Adjustable Cam Ass'y. (Blue)
27	100304	1	Ingredient Adjustable Cam Ass'y. (Red)

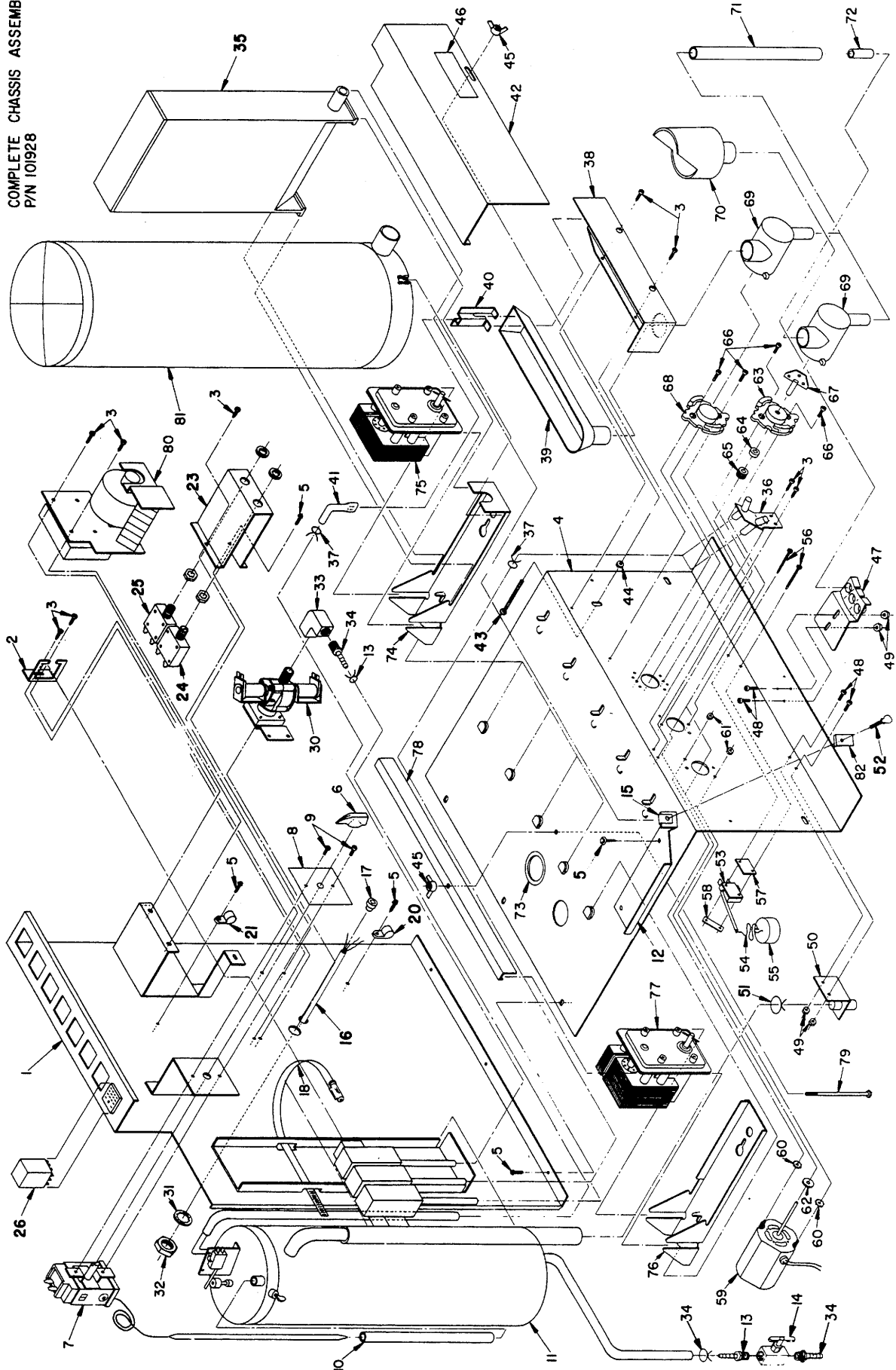


HOT WATER TANK AND MANIFOLD ASSEMBLY
 P/N 102300

Item	Part No.	Quantity	Description
1	101950	1	Hot Water Tank Weld Ass'y.
2	60174	2	Spacer
3	33598	1	Thermostat — Safety
4	21064	1	Thermostat Retaining Spring
5	50513	2	#8-32 Twin Whiz Nut
6	33633	1	Immersion Heater
7	60122	3	Element Gasket
8	50557	1	1" Conduit Lock Nut
9	25408	1	3/8 O.D. Tubing Approx. 36" Long
10	60104	2	3/8 O.D. Hose Clamp
11	101982 (Not shown)	1	Complete Water Tank Lid Ass'y.
12	101954	1	Water Tank Lid Weld Assembly
13	50260	1	#8-32 x 3/4 Thumb Screw
14	25255	1	Caplug
15	34141 (Not shown)	1	Water Tank Harness (Part of Complete Wiring Ass'y. P/N 102156)
16	50004	2	#4 x 3/4 Phil. Pan HD. S.M.S.
17	60115	1	Float
18	30113	1	Float Rod
19	50522	1	#10-32 Stainless Steel Nut

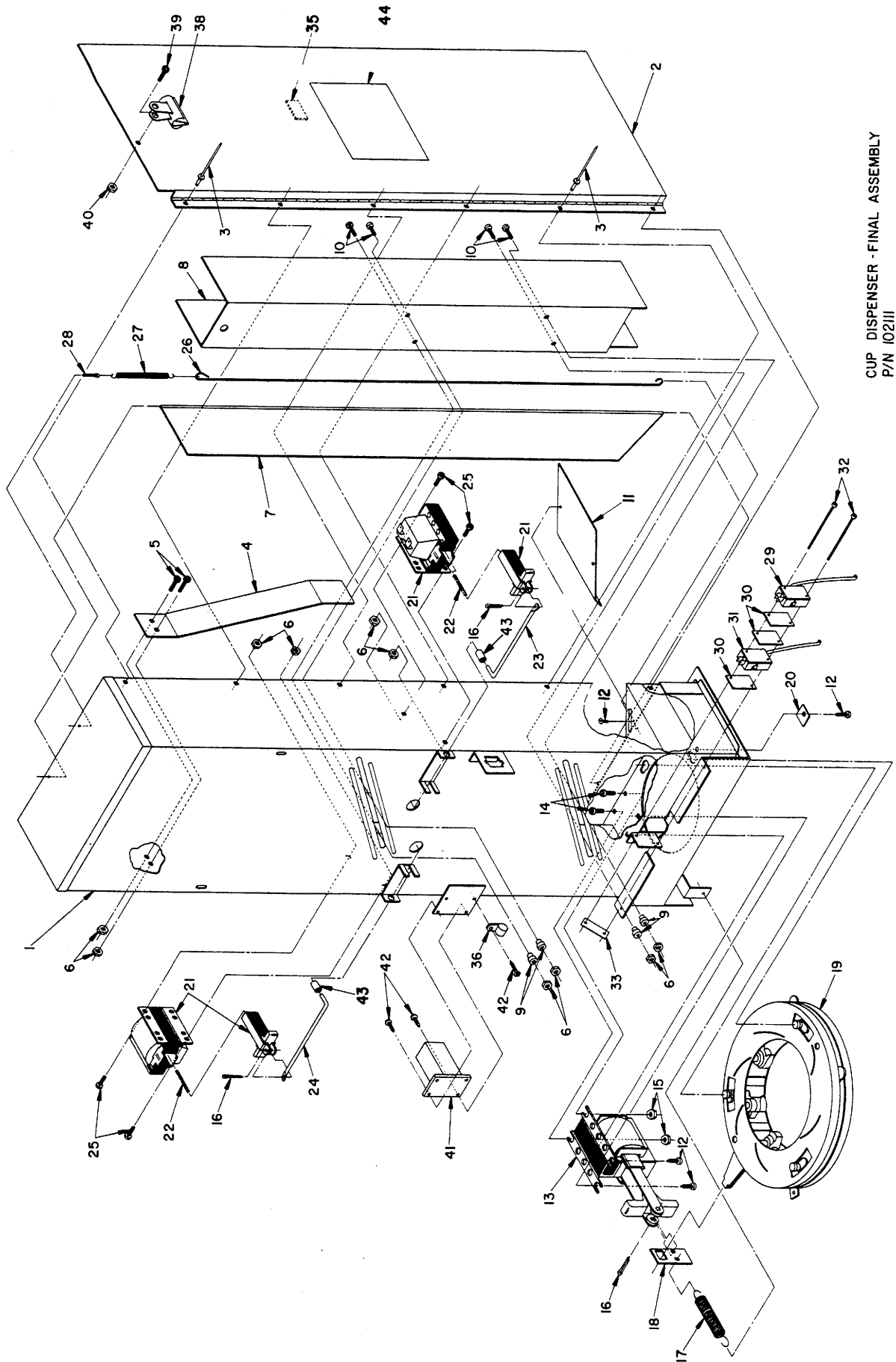
Item	Part No.	Quantity	Description
20	50520	2	#10-32 Nylon Nut
21	34139	1	Water Tank Float Switch
22	33706	1	Switch Insulator
23	50586	1	Twin Speed Nut — Tinnerman
24	101981 (Not shown)	1	Complete Water Tank Ass'y.
25	30123	1	Dump Valve Manifold
26	60110	1	1/4" Brass Elbow 45°
27	60107	5	1/4" Close Brass Nipple
28	60117	3	Valve Gasket
29	30115	3	Manifold Valve Plate
30	34025	3	Dump Valve
31	50217	6	#8-32 x 5/16 Phil. Pan HD. Brass M.S.
32	50741	3	1/8 Dia. x 3/4 Long Roll Pin Stainless Steel
33	25409	2	Tubing Approx. 18" Long Each
34	25409	1	Tubing Approx. 24" Long
35	60103	3	1 1/16 O.D. Hose Clamp
36	25408	1	Tubing Approx. 19" Long
37	25628	1	5/8 I.D. x 3/4 O.D. Tubing 36" Long
38	60401	1	3/4 O.D. Hose Clamp

COMPLETE CHASSIS ASSEMBLY
P/N 101928



Item	Part No.	Quantity	Description
1	102172	1	Chassis Top Weld Ass'y.
2	5805	1	Manifold Bracket
3	50423	8	#8 x 3/8 Phil. Pan HD. Type "AB" S.M.S.
4	9736	1	Chassis Base
5	50202	2	#8-18 x 1/2 Phil. Hex Washer HD. Tek
6	33579	1	Selecter Switch Knob
7	33932	1	Adjustable Thermostat
8	20404	1	Label — Thermostat
9	50112	2	#6-32 x 1/4 Phil. Pan HD. M.S.
10	25412	9"	1/2" I.D. x 3/8 O.D. Clear Tubing — Maylon
11	102300	1	Water Tank & Manifold Ass'y.
12	4426	1	Chocolate Tie Down Bracket
13	60104	2	3/8 O.D. Hose Clamp
14	60102	1	Brass Drain Valve
15	50633	1	Tinnerman Speed Nut
16	33631	1	Power Cord
17	33683	1	Strain Relief Bushing
18	60418	1	Hose Clamp 4 1/16 to 5"
19	34142 (Not shown)	1	Chassis Harness (Part of Complete wiring Ass'y. P/N 102156)
20	60116	1	Wire Clamp 3/8
21	09-0002-713	1	Wire Clamp
22	33527 (Not shown)	8	Connector — Cig.
23	8963	1	Circuit Breaker — Panel
24	33620	1	5 AMP Circuit Breaker
25	33850	1	15 AMP Circuit Breaker
26	33762	7	Relays
27	34140 (Not shown)	1	Relay Harness (Part of Complete Wiring Ass'y. P/N 102156)
28	101927 (Not shown)	1	Chassis Base & Top Screw Ass'y.
30	33697	1	Water Inlet Valve
31	50619	1	3/4 Internal Shakeproof Lock Washer
32	50553	1	3/4-16 Hex Nut
33	60109	1	1/4 FPT x 1/4 90° Brass Elbow
34	60111	1	1/4 MPT x 1/4 I.D. Brass Hose Barb
35	25548	4	Tall Ingredient Canister — Complete
36	100177	1	Water Outlet Weld Ass'y.
37	60105	2	1/2 O.D. Hose Clamp
38	102075	1	Water Through Plate Weld Ass'y.
39	25635	1	Water Through (With Tapered Sides)

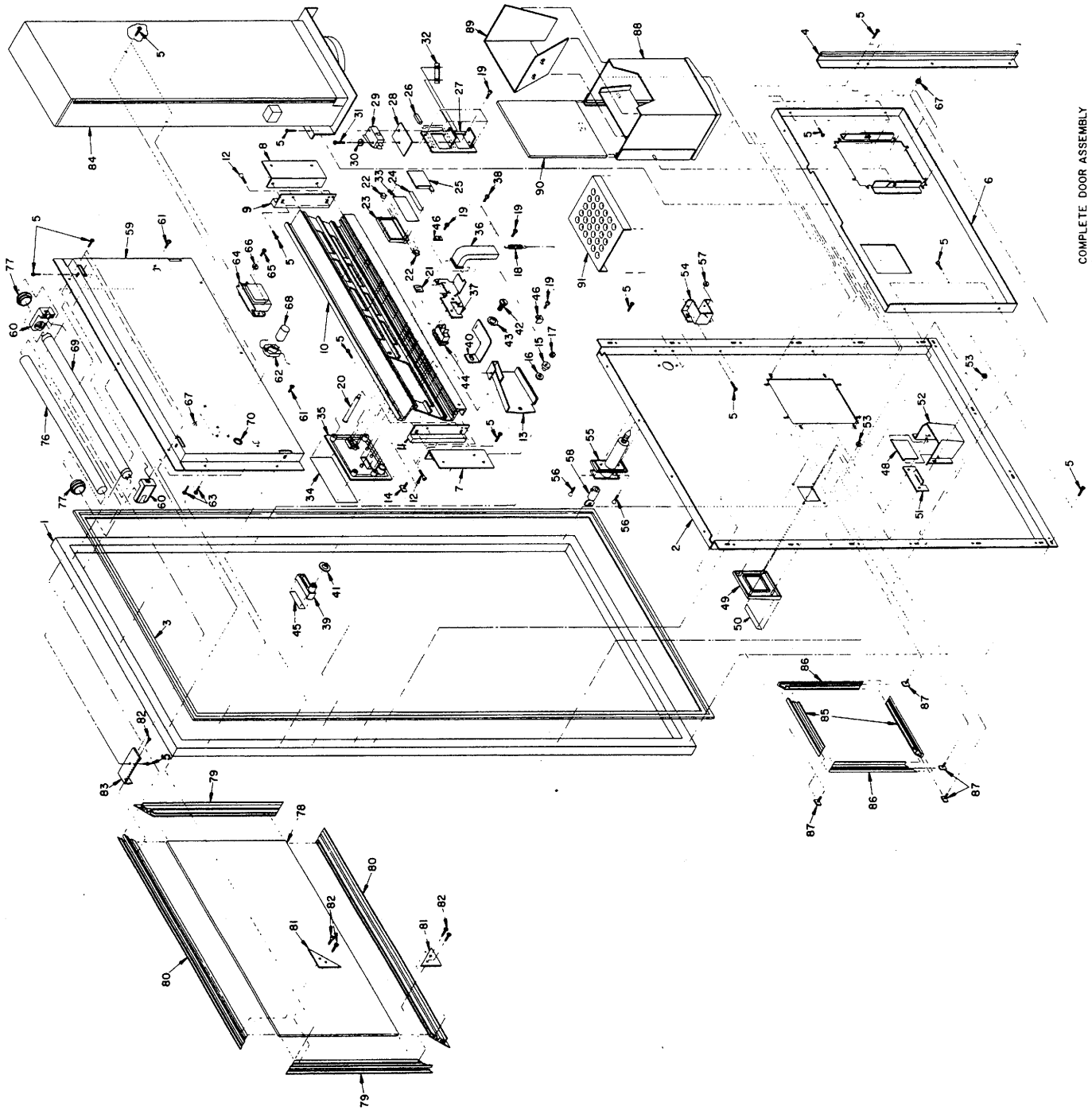
Item	Part No.	Quantity	Description
40	9755	1	Coffee Water Hose Retaining Brkt.
41	30374	1	Coffee Water Hose Dispenser Tube
42	9315	1	Air Housing Hood
43	50377	1	1/4-20 x 3" Slotted Pan HD. M.S.
44	50531	1	1/4-20 Hex HD. Nut
45	50530	2	1/4-20 Wing Nut
46	20412	1	Label — Replace Before Operation
47	4666	1	Spout Holder
48	50240	4	#8-32 x 3/8 Phil. Pan HD. M.S.
49	50513	4	#8-32 Twin Whiz Nut
50	102219	1	Waste Bucket Hose Brkt. Ass'y.
51	60401	1	3/4 O.D. Hose Clamp
52	50260	1	#8-32 x 3/4 Thumb Screw
53	34058	1	Bucket Float Switch
54	60415	45"	Nylon Fishing Line
55	25407	1	Waste Bucket Float
56	50004	2	#4 x 3/4 Phil. Pan HD. S.M.S.
57	33706	1	Switch Insulator
58	50586	1	Twin Speed Nut — Tinnerman
59	33649	2	Blender Motor
60	50510	4	#8-32 Small Pattern Hex Nut
61	50585	5	#8 Ext. Shake Proof Lock Washer
62	25422	2	Slinger Base
63	25421-000	2	Blender Base
64	25419	2	Retainer Seal
65	25418	2	Retainer Nut
66	50104	6	#6-32 x 1/4 Phil. Pan HD. Type "23" Self Thread
67	25430	2	Impeller Blade
68	25420	1	Coffee Base
69	25429	3	Blender Housing
70	25428	2	Blender Funnel
71	25410	3	Tubing @ Approx. 7" Long each
72	30152	3	Ingredient Outlet Nipple
73	33652	4"	Grommet Material
74	5701	4	Canister Holder
75	34146	4	Ingredient Motor
76	100168	1	Chocolate Holder Weld Ass'y.
77	34147	1	Chocolate Motor
78	5797	1	Motor Hold Down
79	50388	1	1/4-20 x 4 1/2 Hex HD. Bolt
80	102175	1	Timer Assembly
81	25417	1	Chocolate Canister — Complete
82	5727	1	Chocolate Tie Down Clamp
83	102321 (Not shown)	1	Chassis Top Ass'y.
84	102322 (Not shown)	1	Chassis Bottom Ass'y. — Complete



CUP DISPENSER - FINAL ASSEMBLY
P/N 102111

Item	Part No.	Quantity	Description
1	102173	1	Cup Dispenser Cabinet Weld Assembly
2	102109	1	Cup Dispenser Door Weld Ass'y.
3	50667	6	1/8 Dia. x .188-.250 Grip Range Pop Rivet
4	4623	1	Flat Transfer Spring
5	50112	2	#6-32 x 1/4 Phil. Pan HD. M.S.
6	50493	10	#6-32 F/M Unitorque Nut
7	101902	1	Cup Gate Assembly
8	9729	1	Cup Transfer Channel
9	30114	4	Cup Transfer Bushing
10	50136	4	#6-32 x 5/8 Phil. Pan HD. M.S.
11	4646	2	Cup Slide Drop Extension
12	50423	4	#8 x 3/8 Phil. Pan HD. Type "AB" S.M.S.
13	33637	1	Cup Drop Solenoid
14	50240	2	#8-32 x 3/8 Phil. Pan HD. M.S.
15	50494	2	#8-32 F/M Unitorque Nut
16	50650	1	1/8 Dia. x 1" Long Cotter Pin
17	21005	1	Cup Drop Spring
18	4660	1	Copwell Solenoid Link
19	60125	1	Cup Drop Ring
20	4647	1	Cup Ring Lock
21	33635	2	Cup Transfer Solenoid
22	21006	2	Small Solenoid Spring
23	4616	1	Long Solenoid Rod
24	5833	1	Short Solenoid Rod

Item	Part No.	Quantity	Description
25	50100	4	#6-32 x 3/16 Phil. RD. HD. M.S.
26	9799	1	Cup Retainer Wire Spring
27	21016	1	3/32 Dia. x 1/2 Long Cotter Pin
28	50631	1	Cup Transfer Switch (Second)
29	34083	1	Switch Insulator
30	33706	2	Water Tank Float Switch (FIRST)
31	34139	1	#4 x 1/4 Phil. Pan HD. Type "AB" S.M.S.
32	50005	2	Twin Speed Nut — Tinnerman
33	50586	1	Cup Drop Harness (Part of Complete Wiring Ass'y. P/N 102156)
34	34144 (Not shown)	1	Magnet
35	60114	1	3/8 Wire Clip
36	60116	1	Press Clip
37	60130 (Not shown)	3	Paper Clip
38	60118	1	#6-32 x 1/4 Phil. Pan HD. M.S.
39	50105	1	#6-32 Twin Whiz Nut Counter
40	50505	1	#8-18 x 1/2 Phil./Hex Washer HD. Tek
41	33647	1	3M FR-1 Scotchite 105° C 1/4" Dia. x 1" Long
42	50202	1	Specialty Foods Label
43	25666	2	Closed End Splice
44	20702	1	
45	33505 (Not shown)	2	



COMPLETE DOOR ASSEMBLY
P/N 101905

Item	Part No.	Quantity	Description
1	10116-003	1	Complete Door Frame Weld Ass'y.
2	9732	1	Door Panel
3	60359	1	Door Gasket
4	9798	1	Door Anti-Cheat (Right Side)
5	50202	50	#8-18 x 1/2 Phil./Hex Washer HD. Tek
6	101943	1	Door Stiffener Weld Assembly
7	9774-000	1	Dashboard Mounting Brk't.
8	9774-001	1	Dashboard Mounting Brk't. — Right
9	25-0086-004	1	Dashboard End — Left
10	22381	1	Dashboard
11	25-0086-003	1	Dashboard End — Right
12	50095	4	#6-32 x 5/8 Phil. Flat HD. Self Tapping
13	102158	1	Rejector Lever Follower Ass'y.
14	50712	1	#8-32 x 1/2 T-Bolt
15	30053	1	Shoulder Bushing
16	50613-000	1	3/16 Wrought Washer
17	50494	1	#8-32 F/M Unitorque Lock Nut
18	21015	1	Coin Reject Slide Spring
19	50242	21	#8-32 x 1/4 Phil. Pan HD. Type "23" Self Tapping
20	25-0099-000	1	Glo-Life (Empty Life)
21	50628	1	Tinnerman Push-On
22	33-5107-000	2	Clip Tinnerman
23	25638	1	Selector Button
24	206668	1	Push Decal
25	9772	1	Flavor Tab — Retainer
26	60005	1	1/8 x 3/8 Black Door Tile
27	9773	4	Retainer — Flavor Button
28	20-0144-000	8	Insulator Coin Blocking Switch
29	20-2075-000	8	Selection Switch
30	20-0798-000	8	Washer Fibre .125
31	50004	16	#4 x 3/4 Phil. Pan HD. S.M.S.
32	50586	8	Twin Speed Nut — Tinnerman

Item	Part No.	Quantity	Description
33	25646-XXX	10	Selection Tab
	25646-000	1	Coffee — Black
	25646-001	1	Coffee — Sugar
	25646-002	1	Coffee — Cream
	25646-003	1	Coffee — Cream & Sugar
	25646-004	1	Hot Chocolate
	25646-005	1	Soup — Chicken
	25646-006	1	Soup — Beef
	25646-007	1	Soup — Onion
	25646-008	1	Extra — Cream
	25646-009	1	Extra — Sugar
	25646-010	1	Tea
34	20681-XXX	7	Coin Insert Label
	20681-002	1	Coin Insert Label — 20¢
	20681-003	1	Coin Insert Label — 25¢
	20681-004	1	Coin Insert Label — 30¢
	20681-005	1	Coin Insert Label — 35¢
	20681-006	1	Coin Insert Label — 40¢
	20681-007	1	Coin Insert Label — 45¢
	20681-008	1	Coin Insert Label — 50¢
35	60372	1	Coin Insert Casting
36	20-1748-000	1	Coin Intake Chute
37	8715	1	Retainer — Coin Chute & Change Light
38	20-0470-008	5	#6-32 x 3/16 Phil. RD. HD. Self Tapping
39	33-4283-000	1	Coin Release Handle
40	25-0302-000	1	Coin Reject Lever
41	10-0816-000	1	Coin Release Washer
42	20-0469-020	1	1/4-28 x 1/2 Phil. Truss HD. M.S.
43	20-0717-008	1	1/4 INT./EXT. Tooth Lock Washer
44	33911	1	Use Correct Change Light
45	33-4370-000	1	Decal — Coin Return Lever
46	9751	4	Coin Insert Retaining Brk't.
47	100535 (Not shown)	1	Cupwell Final Assembly
48	20-0102-000	1	Coin Return Door
49	33-4281-000	1	Change Bezel
50	33-4984-001	1	Decal — Change

Item	Part No.	Quantity	Description
51	20-1422-000	1	Tab, Anti-Payout Switch
52	20-1649-000	1	Coin Return Cup
53	33-4982-000	4	#8 Sheet Metal Nut (Service Part Only)
54	9823	1	Lock Housing
55	60321	1	Pop Out 4255 Flush Handle
56	50338	2	#10-32 x 1/2 Phil. Flat HD. M.S.
57	50546	2	#10-32 Twin Whiz Nut
58	60330	1	Lock Cylinder With 2 Keys
59	9738	1	Display Back
60	33548	2	Fluorescent Lamp Holders
61	50122	2	#6-32 x 3/8 Phil. Pan HD. M.S.
62	33617	1	Starter Socket
63	50018	2	#4-40 x 3/8 Phil. Pan HD. M.S.
64	33669	1	Ballast Lamp (Robertson SP19)
65	50240	2	#8-32 x 3/8 Phil. Pan HD. M.S.
66	50585	2	#8 Ext. Shake Proof Lock Washer
67	50513	10	#8-32 Twin Whiz Nut
68	33661	1	Starter — Fluorescent FS 25 GE
69	34135	1	Fluorescent Tube F18T8-CW-K24
70	33671	1	Grommet
71	34152 (Not shown)	1	Light Wire — White 28" Long
72	34151 (Not shown)	1	Light Wire — Black 18" Long
73	33527 (Not shown)	2	Connector — Cig.
74	33505 (Not shown)	1	Closed End Splice
75	60130 (Not shown)	1	Press Clip
76	25659	1	Safety Shield

Item	Part No.	Quantity	Description
77	33713-002	2	Safety Shield End Cap
78	25627	1	Picture Display Window
79	22388-001	2	Picture Frame — Sides
80	22388-002	2	Picture Frame — Top & Bottom
81	9794	4	Display Trim Corner Brk't.
82	50423	12	#8 x 3/8 Phil. Pan HD. Type "AB" S.M.S.
83	4437	4	Top Window Frame Retainer
84	102111	1	Cup Dispenser — Final Assembly
85	22378-001	2	Cupwell Trim (Top & Bottom)
86	22378-000	2	Cupwell Trim (Sides)
87	50724	8	#8-32 x 3/8 T-Bolt
88	100446	2	Cupwell Weld Assembly
89	4804	1	Cupwell Funnel
90	25405	1	Cupwell Door
91	25406	1	Cupwell Floor
92	34143 (Not shown)	1	Door Harness (Part of Complete Wiring Ass'y. PIN 102156)
93	60116 (Not shown)	3	Wire clamp 3/8
94	09-0002-713 (Not shown)	2	Wire Clamp
95	102176 (Not shown)	1	Dashboard Final Assembly
96	102177 (Not shown)	8	Selector Button Ass'y. (Blank)
97	102178 (Not shown)	1	Complete Coin Insert Casting Ass'y.
98	102179 (Not shown)	1	Complete Display Back Ass'y.
99	102272 (Not shown)	1	Picture Frame — Final Assembly

CARE AND CLEANING

ALWAYS DISCONNECT POWER SOURCE BEFORE CLEANING

Cabinet Exterior: Wash with a mild detergent and water. Rinse and dry thoroughly. Occasionally wax with a quality car wax. Plastic exterior parts may be cleaned with a quality plastic cleaner.

Cabinet Interior: Wash with a mild detergent and water. Rinse and dry thoroughly.

The following steps should be taken to make cleaning the interior easier and more sanitizing.

1. Remove wing nut and air shroud.
2. Remove mixing bowls, coffee trough and product hoses.
3. Remove whipper blades.
4. Remove wing nut and motor retainer. Lift motor assemblies up for cleaning.
5. The cabinet sub-floor and storage shelves lift out for ease of cleaning.
6. The chassis base to be cleaned like interior of cabinet.
7. Remove, disassemble, and clean the cupwell and the parts in hot soapy water.
8. Clean mixing bowls, whipper blades, mixing bowl bases, coffee trough, and product hose in hot soapy water.
9. Rinse mixing bowls, coffee trough, whipper blades, product hoses, cupwell and parts in an approved sanitizing solution for at least one minute. The mixing bowl bases have to be swabbed with the approved sanitizing solution. Then thoroughly rinse parts in hot, clean water and dry.

An approved sanitizing solution:

2 ounces of household bleach in 1 gallon of warm water or equivalent.

10. The door seal should be kept clean to insure a good seal.

11. The hot water tank can supply the hot water for cleaning.

- Coin Acceptor:
1. Remove the coin acceptor from the coin mechanism.
 2. Soak the coin acceptor in warm water and a mild liquid household detergent for approximately ten minutes.
 3. Use a stiff paint brush or toothbrush to clean foreign matter from the coin acceptor.
 4. Rinse in clean warm water and dry thoroughly.

