

8620246

PARTS MANUAL

FOR

VISI-VEND

P.O. Box 488 • 165 North 10th St. • Waukee, Iowa 50263
515-277-5397 800-247-8709

P/N 620246

Table Of Contents

Parts Ordering Procedure	3
Kits And Accessories	3
Material Return Procedure	4
Kick Panel Mounting Instructions.....	5
Parts Lists and Illustrations	
Vendura Styling	6
Vendura Styling Parts List	7
National Crown Styling	8
National Crown Styling Parts List.....	9
Imperial Crown Styling	10
Imperial Crown Styling Parts List	11
Rowe Styling	12
Rowe Styling Parts List	13
Grandura Styling	14
Grandura Styling Parts List	15
Golden Furniture Styling	16
Golden Furniture Styling Parts List	17
Golden Furniture II Styling	18
Golden Furniture II Styling Parts List	19
Unit Final Assembly-Cold	20
Unit Final Assembly Parts List-Cold	21
Unit Final Assembly-Frozen	22
Unit Final Assembly Parts List-Frozen	23
Complete Cabinet Assembly-Cold	24
Complete Cabinet Assembly Parts List-Cold	25
Complete Cabinet Assembly-Frozen	26
Complete Cabinet Assembly Parts List-Frozen	27
Refrigeration Unit Assembly-Cold	28
Refrigeration Unit Assembly Parts List-Cold.....	29
Evaporator Assembly-Cold	30
Evaporator Assembly Parts List-Cold	31
Refrigeration Unit Assembly-Cold	32
Refrigeration Unit Assembly Parts List-Cold.....	33
Evaporator Assembly-Frozen	34
Evaporator Assembly Parts List-Frozen	35
Defrost Control Box Assembly	36
Defrost Control Box Assembly Parts List.....	37
Ballast And Breaker Assembly	36
Ballast And Breaker Assembly Parts List	37
Door Harness Assembly	38
Door Harness Assembly Parts List.....	39
Complete Drive Assembly	40
Complete Drive Assembly Parts List	41
Tray and Drum Assembly	42
Tray and Drum Assembly Parts List	43
Interlock Final Assembly	44
Interlock Final Assembly Parts List	45
Vend Door Assembly	46
Vend Door Assembly Parts List.....	47
Transformer Cover Assembly.....	48
Transformer Cover Assembly Parts List	49
Control Box Assembly	50
Control Box Assembly Parts List	51
Mechanism Door Final Assembly	52
Mechanism Door Final Assembly Parts List	53
Baffle Assembly	54
Baffle Assembly Parts List	55
Common Door Assembly	56
Common Door Assembly Parts List.....	57, 58

PARTS ORDERING PROCEDURE

When ordering parts, include the following information:

1. Shipping address.
2. Address where the invoice should be sent.
3. The number of parts required.
4. Always refer to the pertinent parts and/or service manual for the correct part number and description of a specific part.
 - a. If you do not have the right parts manual at the time you order, contact VENDO/USI, P.O. Box 488, 165 No. 10th Street, Waukee, Ia. 50263. They will provide a copy for you.
 Don't hold the order pending receipt of the parts manual; use the most accurate description you can (and the model number and serial number of the machine); include the name of the assembly in which the part is used and, if practical, a sample part. Furnish any information which will enable our order department to pinpoint the exact part needed.
 - b. When "RIGHT" and "LEFT" are used in connection with the name of a part, it is taken to mean that the person is facing the machine.
5. Always include model number and the serial number of the machines for which the parts are needed on the order.
6. List any special shipping instructions.
 - a. Always note on the order if you require air or air special, truck, parcel post, or rail. If a specific carrier is desired, note it on the order.
7. Sign the order and note the date entered on the order.
8. When a purchase order number is used, be sure that it is legible and visible.

Mail you order to: VENDO/USI
 P.O. Box 488
 165 North 10th Street
 Waukee, Iowa 50263

All orders are carefully packed and inspected prior to shipment. Damage incurred during shipment should be reported at once and a claim filed with the terminating carrier.



KITS AND ACCESSORIES

Listed below are basic kits being offered for the Visi-Vend Vendor

PART NO.	PART NAME	PURPOSE OR FUNCTION
131116	DOLLAR COIN CONV. KIT	To allow acceptance of the one dollar coin. NOTE: This kit does not include the coin mechanism.
131144	"FREE" VEND KIT	All alternate coinage machines - To put the machine on free vend or to trouble shoot the machine.
377944	PRICE WHEEL	Indicates vend prices from 10¢ to 95¢
377944-1	PRICE WHEEL	Indicates vend prices from \$1.00 to \$1.85
210101	MENU CARD KIT	Product cards indicating type of items being vended.

MATERIAL RETURN PROCEDURE

All items returned must be accompanied by material return tags clearly stating the reason for return. (Tags are available on request.)

To replace an inoperative part within the terms of the warranty, please follow these instructions.

1. If a replacement part was taken from the available parts stock and installed on the machine, proceed as follows:
 - a. Complete a parts return tag. Be sure all of the requested information is written in.
 - b. Keep the white (top) copy.
 - c. Attach the tag to the inoperative parts and send it by the cheapest method of transportation to: VENDO/USI, 165 North 10th Street, Waukee, IA 50263.
 - d. A like part will be shipped prepaid, at no charge, if our inspection shows the inoperative part became defective in warranty.
 - e. If a part does not meet the terms of the warranty, it will be replaced with a new part and invoiced accordingly. The returned part will be scrapped to eliminate further handling charges.
2. If a spare part is not available to put on the machine, order the part required. Call 1-800-247-8709 for emergency requirements. The part will be shipped and invoiced to you. After the replacement is received, follow the procedure as outlined above under Number 1.

After exchange of the part on the machine, complete a material return tag. Check the box marked "Credit" and fill in the invoice number covering the part.

Attach the tag to the inoperative part and send it by the cheapest method of transportation to: VENDO/USI, 165 North 10th Street, Waukee, IA 50263.

If our inspection shows the inoperative part became defective in warranty, a credit will be issued to cancel the invoice on which the replacement part was shipped. This credit will include any prepaid transportation charges. To receive credit the inoperative part MUST be returned within 30 days from the date the replacement was shipped.

We do not issue cash credit for the return of any part or accessory.

INSTRUCTIONS: USE TAG FOR UP TO 3 ITEMS
ALL ITEMS RETURNED MUST BE ACCOMPANIED BY PARTS RETURN TAG.

DO NOT USE FOR REFRIGERATION OR ICE MAKING UNITS

VENDO/USI PARTS RETURN TAG

Form L-1486

Detach upper portion of the copy & use as mailing label.
It is gummed - machine and apply.
Retain top portion for your records.

MODEL NUMBER	SERIAL NUMBER	PART NUMBER	PART NAME	QTY	INVOICE NUMBER	REASON FOR RETURN
HBAB	4BK001218	121662	VALVE	16121	966742	
HB87	35K002248	354005-2	THERMOSTAT 5.91	1		
VF156-6	3RK012218	342238	RELAY	1651		

Reason For Return: PARTS ARE INOPERATIVE

Date Returned: 6-20-74 RETURN TAG No. 370

FROM: YOUR VENDING CO.
ADDRESS: 1000 MAIN ST.
CITY: ANYWHERE
STATE: U.S.A. ZIP: 10000

TO: VENDO/USI
P.O. Box 488 - 165 No. 10th Street
Waukee, IA 50263

Refrigeration units and ice makers require a separate tag for each item returned. The procedure is the same as for parts except the original is attached to the unit and the customer keeps the copy for his records. All refrigeration systems and ice makers are to be returned to: VENDO/USI, 165 North 10th Street, Waukee, IA 50263.

PRESS FIRMLY FOR CLEAR COPY

INSTRUCTIONS:

1. PLEASE COMPLETE ONE TAG FOR EACH ITEM RETURNED
2. WIRE PART ONE TO SYSTEM BEFORE CRATING
3. KEEP UPPER PORTION OF PART TWO FOR YOUR RECORDS
4. USE LOWER PORTION OF PART TWO FOR SHIPPING LABEL

VENDO/USI

Form L-1322 (Rev. 3-77)

REFRIGERATION UNIT & ICE MAKER RETURN TAG

PART NUMBER 123890 PART NAME ICE MAKER

REASON FOR RETURN: WON'T FREEZE WATER

THIS INOPERATIVE REFRIGERATION SYSTEM, OR ICE MAKER WAS REMOVED FROM:

MACHINE MODEL NO. PM 8 SERIAL NO. 4350 REPLACEMENT DATE 3-3-77

INOPERATIVE UNIT SERIAL NO. 404004872 WAS REPLACED BY UNIT SERIAL NO. 405007310 THE REPLACEMENT WAS TAKEN FROM STOCK (PLEASE CHECK) YES OR FROM ANOTHER MACHINE:

MODEL NO. _____ SERIAL NO. _____

PLEASE CHECK:

REPLACE WITH A LIKE UNIT OR SYSTEM

CREDIT OUR ACCOUNT. WE PURCHASED REPLACEMENT BILLED ON INVOICE NO. _____

SHIPPED VIA PIE RETURN TAG NUMBER 1100

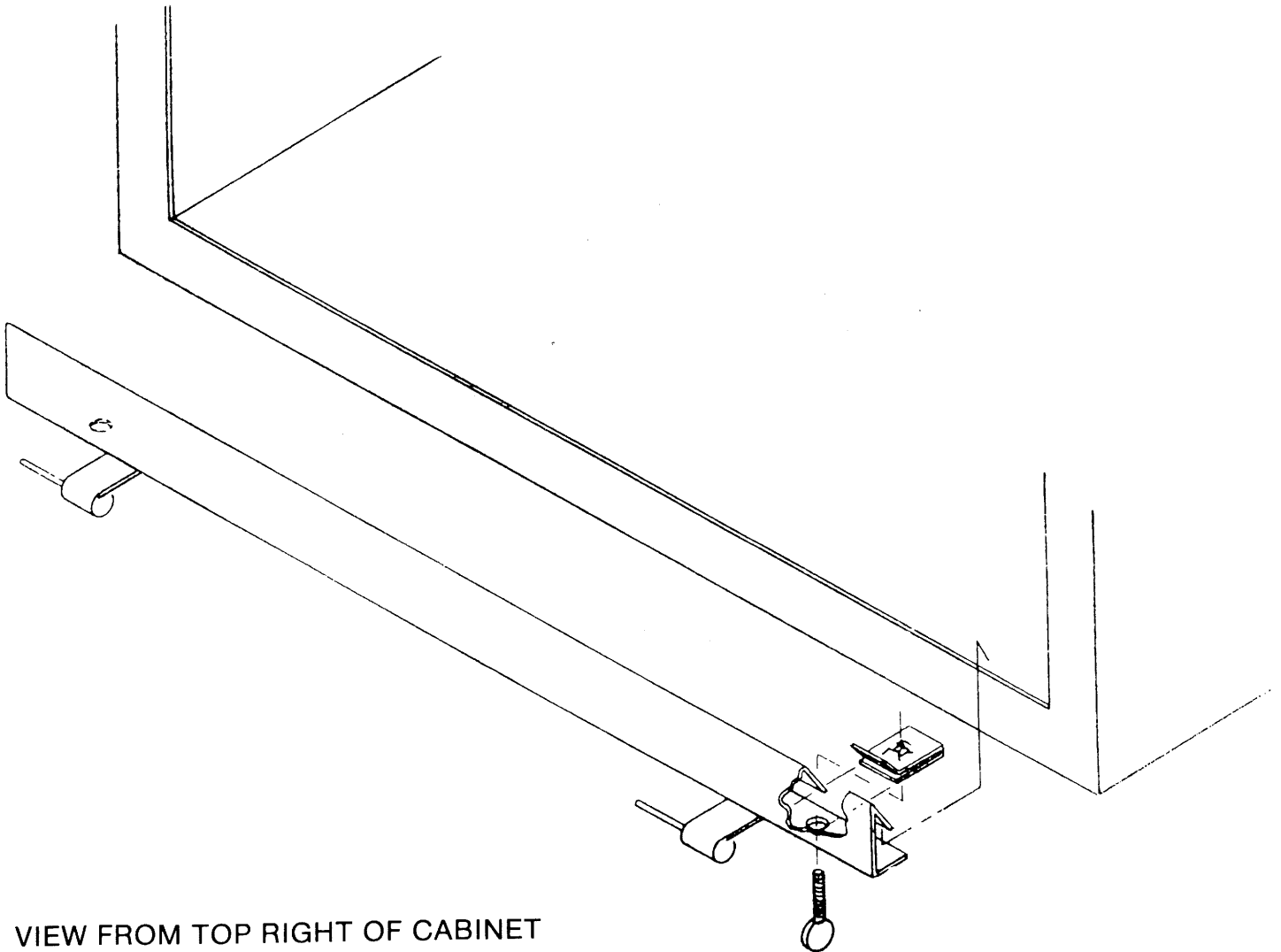
DATE SHIPPED 4-1-77

FROM: YOUR VENDING CO.
ADDRESS: 1000 MAIN ST.
CITY: ANYWHERE
STATE: U.S.A. ZIP: 00000

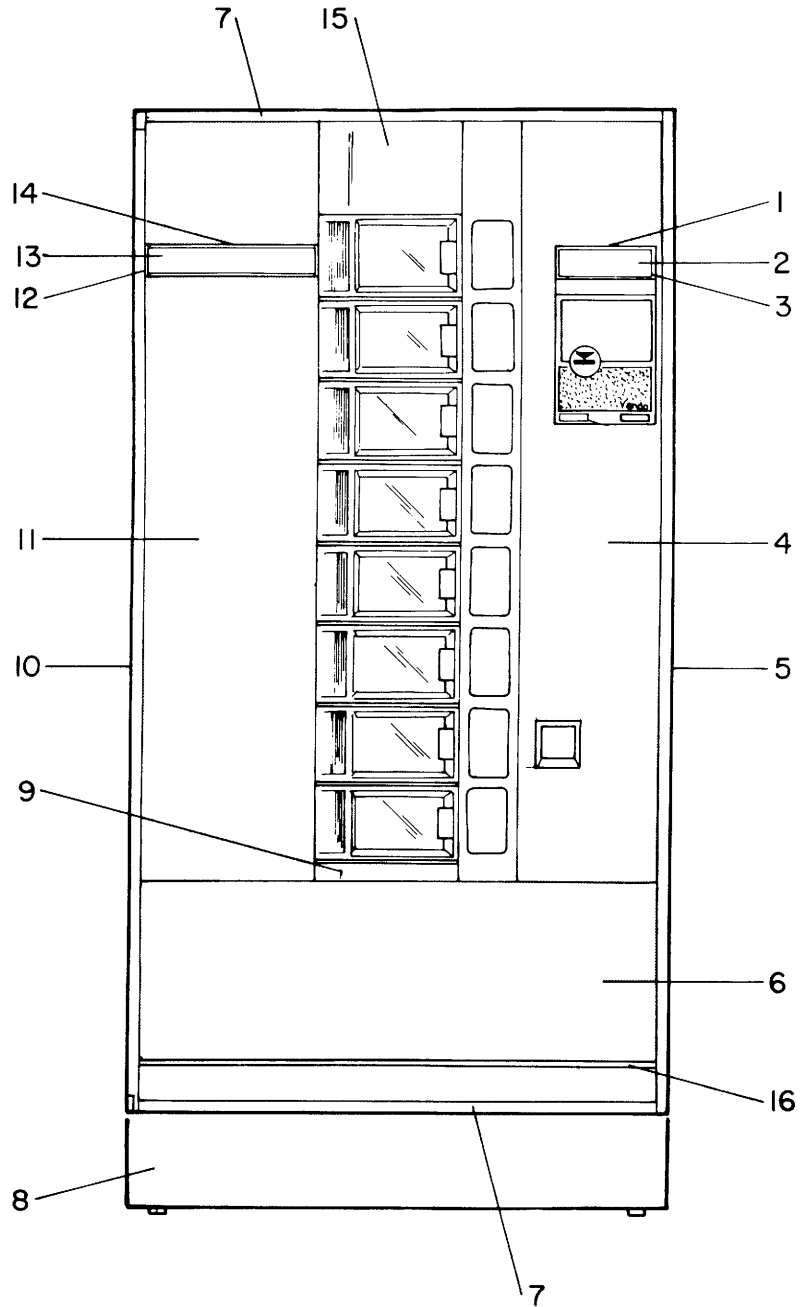
TO: VENDO/USI
P.O. Box 488
165 No. 10th Street
Waukee, IA 50263

KICK PANEL MOUNTING INSTRUCTIONS

1. Place (2) tinnerman speed nuts (P/N 50633) on kick panel bracket (P/N 210022) over each hole.
2. Hang kick panel bracket over flange of cabinet floor.
3. Take thumb screw (P/N 50260) and place thru hole of bracket, now screw down to tighten bracket in place.
4. Repeat step 3 for other thumb screw.
5. Take kick panel (P/N 210031) and slide on to mating hinge pins on bracket.



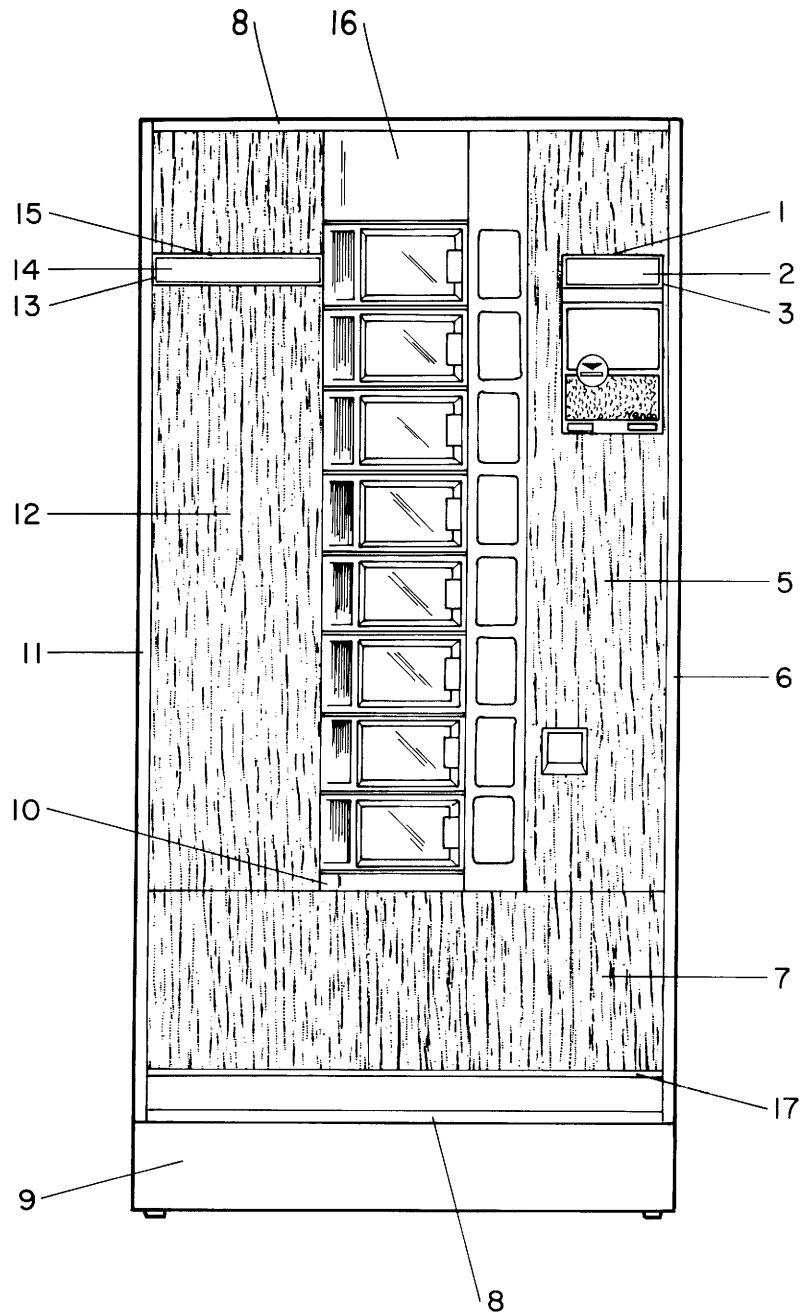
VIEW FROM TOP RIGHT OF CABINET



INT'L TEAK	FROZEN	129763—5	COMPLETE STYLING KIT
	COLD	129763—4	COMPLETE STYLING KIT
WALNUT	FROZEN	129763—3	COMPLETE STYLING KIT
	COLD	129763—2	COMPLETE STYLING KIT
TEAK	FROZEN	129763—1	COMPLETE STYLING KIT
	COLD	129763	COMPLETE STYLING KIT
WALNUT (A.R.A.)	FROZEN	131045—3	COMPLETE STYLING KIT
	COLD	131045—2	COMPLETE STYLING KIT
TEAK (A.R.A.)	FROZEN	131045—1	COMPLETE STYLING KIT
	COLD	131045	COMPLETE STYLING KIT

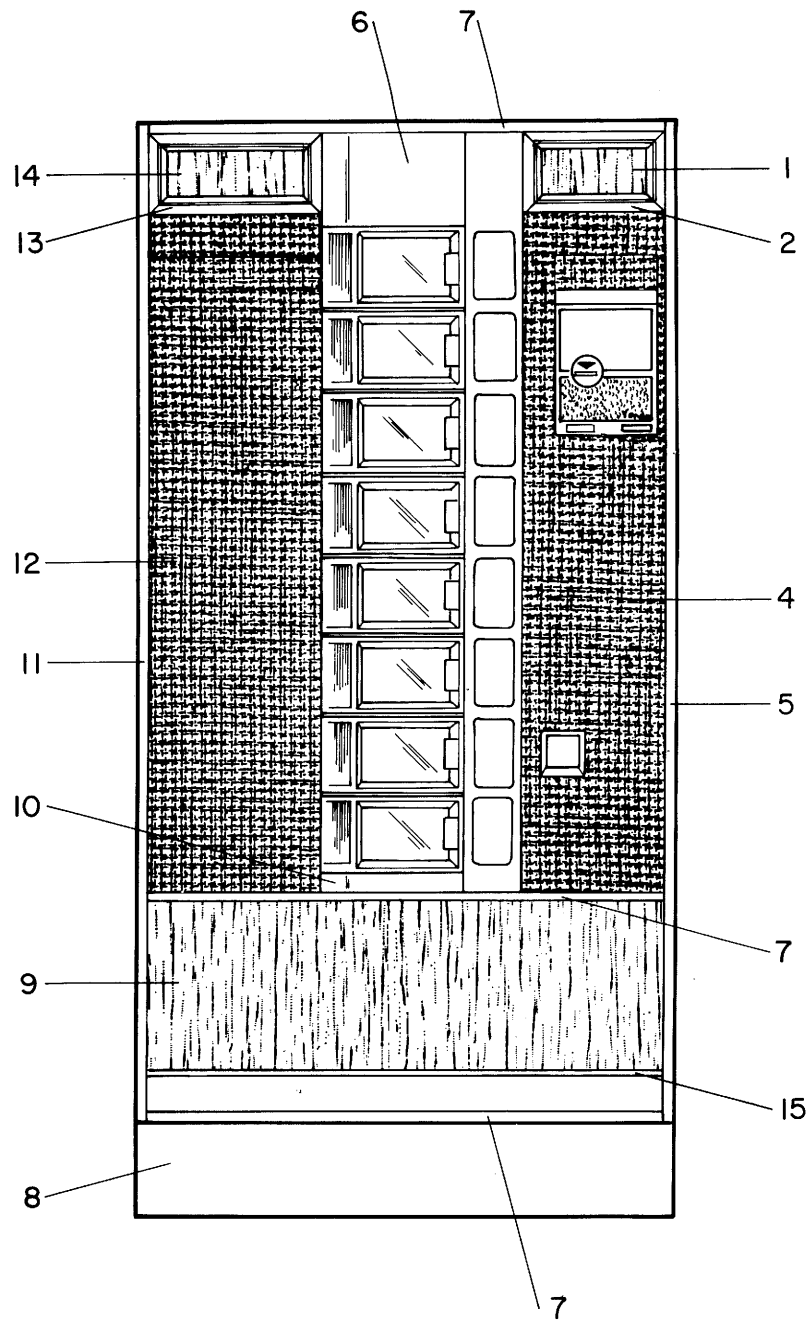
Item	Part No.	No. Req'd		Description
		Cold	Frozen	
8	V328708	4	4	#8-32 x 3/8 T-Bolt (MP For #7) (A.R.A. Only)
9	V800956	8	8	#8-32 Hex Nut With Ext. Lock Washer (MP For #7)
10	V800956	4	4	#8-32 Hex Nut With Ext. Lock Washer (MP For #7) (ARA Only)
	210060	1	1	Kick Panel Installation Kit
	108411-3	1	1	Filler Assembly
	382162	1	1	Trim L.H.
	382163	1	1	Trim L.H. (A.R.A.)
	V328708	3	3	#8-32 x 3/8 T-Bolt (MP For #10)
	V800956	3	3	#8-32 Hex Nut With Ext. Lock Washer (MP For #10)
11	376440-2	1	1	Vinyl-Panel (Only) (LH) (P/N 120292-2 Mech. Door Assembly)
12	361399	2	2	Casting Sign
	322904	2	2	Nut (MP For #12)
13	361463-56	1	1	Strip Product
	361463-55	1	1	Strip Product
	383247-2	1	1	Strip Product (A.R.A.)
14	361464-2	1	1	Trim
15	120214-3	1	1	Center Panel Weld
16	382274	1	1	Trim
	V800648	3	3	#6-32 x 3/8 Phil Pan H.D., With Ext. Lock Washer Type "D" Self Tap (MP For #16)
				P/N 129763-5 FROZEN INT'L TEAK
				P/N 129763-4 COLD INT'L TEAK
1	361464-3	1	1	Trim
2	361463-53	2	2	Strip Product-Indent
3	361399	2	2	Casting Sign
	322904	2	2	Nut (MP For #3)
4	376441-2	1	1	Vinyl-Panel (Only) (RH) (P/N 120853-12 Mech. Door Assembly)
5	380971-1	1	1	Trim R.H.
	V328708	3	3	#8-32 x 3/8 T-Bolt (MP For #5)
	V800956	3	3	#8-32 Hex Nut With Ext. Lock Washer (MP For #5)
6	364845-2	1	1	Lock Washer (MP For #5)
7	380970-2	2	2	Vinyl Panel (Only) (P/N 121802-1 Kick Panel Assembly)
	V328708	8	8	Trim-Top & Bottom
	V800956	8	8	#8-32 x 3/8 T-Bolt (MP For #7)
8	210060	1	1	Kick Panel Installation Kit
9	108411-3	1	1	Filler Assembly
10	382162	1	1	Trim L.H.
	V328708	3	3	#8-32 x 3/8 T-Bolt (MP For #10)
	V800956	3	3	#8-32 Hex Nut With Ext. Lock Washer (MP For #10)
	376440-4	1	1	Vinyl-Panel (Only) (L-H) (P/N 120292-4 Mech. Door Assembly)
	361399	2	2	Casting Sign
	322904	2	2	Nut (MP For #12)
	361463-56	1	1	Strip Product
	361463-55	1	1	Strip Product
	383247-2	1	1	Strip Product (A.R.A.)
14	361464-2	1	1	Trim
15	120214-3	1	1	Center Panel Weld
16	382274	1	1	Trim
	V800648	3	3	#6-32 x 3/8 Phil Pan H.D., With Ext. Lock Washer Type "D" Self Tap (MP For #16)
				P/N 129763-0 COLD TEAK
				P/N 129763-1 FROZEN TEAK
1	361464-3	1	1	Trim
2	361463-53	1	1	Strip Product-Indent
3	383247-3	2	2	Strip Product-Indent (ARA)
	361399	2	2	Casting Sign
	322904	2	2	Nut (MP For #3)
4	376441-2	1	1	Vinyl-Panel (Only) (RH) (P/N 120853-2 Mech. Door Assembly)
5	380971-1	1	1	Trim R.H.
	V328708	3	3	#8-32 x 3/8 T-Bolt (MP For #5)
	V800956	3	3	#8-32 Hex Nut With Ext. Lock Washer (MP For #5)
6	364845-2	1	1	Lock Washer (MP For #5)
7	380970-2	2	2	Vinyl Panel (Only) (P/N 121802-1 Kick Panel Assembly)
	380970-2	2	2	Trim-Top & Bottom
	V328708	8	8	#8-32 x 3/8 T-Bolt (MP For #7)
	V800956	8	8	#8-32 Hex Nut With Ext. Lock Washer (MP For #7)

Part No.	No. Req'd		Description
	Cold	Frozen	
			129763-9 FROZEN PRES. WALNUT
			P/N 129763-10 COLD PRES. WALNUT
1	361464-3	1	Trim
2	361463-53	1	Strip Product-Indent
3	383247-3	2	Strip Product-Indent (ARA)
	361399	2	Casting Sign
	322904	2	Nut (MP For #3)
4	376441-1	1	Vinyl-Panel (Only) (RH) (P/N 120853-10 Mech. Door Assembly)
5	380971-1	1	Trim R.H.
	V328708	3	#8-32 x 3/8 T-Bolt (MP For #5)
	V800956	3	#8-32 Hex Nut With Ext. Lock Washer (MP For #5)
6	364845	1	Lock Washer (MP For #5)
7	380970-2	2	Vinyl Panel (Only) (P/N 121802- Kick Panel Assembly)
	380970-2	2	Trim-Top & Bottom
	V328708	8	#8-32 x 3/8 T-Bolt (MP For #7)
	V800956	8	#8-32 x 3/8 T-Bolt (MP For #7) (ARA Only)
	V800956	8	#8-32 Hex Nut With Ext. Lock Washer (MP For #7)
8	210060	4	#8-32 Hex Nut With Ext. Lock Washer (MP For #7) (ARA Only)
9	108411-3	1	Kick Panel Installation Kit
10	382162	1	Filler Assembly
	382163	1	Trim L.H.
	V328708	3	#8-32 x 3/8 T-Bolt (MP For #10)
	V800956	3	#8-32 Hex Nut With Ext. Lock Washer (MP For #10)
11	376440-4	1	Vinyl-Panel (Only) (L-H) (P/N 120292-4 Mech. Door Assembly)
12	361399	2	Casting Sign
	322904	2	Nut (MP For #12)
	361463-56	1	Strip Product
	361463-55	1	Strip Product
	383247-2	1	Strip Product (A.R.A.)
14	361464-2	1	Trim
15	120214-3	1	Center Panel Weld
16	382274	1	Trim
	V800648	3	#6-32 x 3/8 Phil Pan H.D., With Ext. Lock Washer Type "D" Self Tap (MP For #16)
			P/N 129763-0 COLD TEAK
			P/N 129763-1 FROZEN TEAK
1	361464-3	1	Trim
2	361463-53	1	Strip Product-Indent
3	383247-3	2	Strip Product-Indent (ARA)
	361399	2	Casting Sign
	322904	2	Nut (MP For #3)
4	376441-2	1	Vinyl-Panel (Only) (RH) (P/N 120853-2 Mech. Door Assembly)
5	380971-1	1	Trim R.H.
	V328708	3	#8-32 x 3/8 T-Bolt (MP For #5)
	V800956	3	#8-32 Hex Nut With Ext. Lock Washer (MP For #5)
6	364845-2	1	Lock Washer (MP For #5)
7	380970-2	2	Vinyl Panel (Only) (P/N 121802-1 Kick Panel Assembly)
	380970-2	2	Trim-Top & Bottom
	V328708	8	#8-32 x 3/8 T-Bolt (MP For #7)
	V800956	8	#8-32 Hex Nut With Ext. Lock Washer (MP For #7)



NATIONAL CROWN	FROZEN 129765	COMPLETE STYLING KIT
	COLD 129765-1	COMPLETE STYLING KIT

Item	Part No.	No. Req'd		Description
		Cold	Frozen	
1	361464-3	1	1	Trim
2	361463-53	1	1	Strip-Product Indent
3	361399	2	2	Casting-Sign
	322904	2	2	Nut (MP For #3)
5	376441-3	1	1	Vinyl Panel R.H. (Only) (P/N 120853-10 Mech. Door Assembly)
6	380971-1	1	1	Trim Side-R.H.
	V328708	3	3	#8-32 x 3/8 T-Bolt (M.P. For #6)
	V800956	3	3	#8-32 Hex Nut With External Lock Washer (M.P. For #6)
7	364845	1	1	Panel-Vinyl (Only) (P/N 121802-3 Kick Panel Assembly)
8	380970-2	2	2	Trim Top & Bottom
	V328708	8	8	#8-32 x 3/8 T-Bolt (MP For #8)
	V800956	8	8	#8-32 Hex Nut With External Lock Washer (M.P. For #8)
9	210060	1	1	Kick Panel Installation Kit
10	108411-3	1	1	Filler Weld Assembly
11	382162	1	1	Trim Side - LH
	V328708	3	3	#8-32 x 3/8 T-Bolt (MP For #11)
	V800956	3	3	#8-32 Hex Nut With External Lock Washer (MP For #11)
12	376440-4	1	1	Panel-Vinyl - LH (Only) (P/N 120292-4 Mech. Door Assembly)
13	361399	2	2	Casting - Sign
	322904	2	2	Nut (MP For #13)
14	361463-55	1		Strip Product
	361463-56		1	Strip Product
15	361464-2	1	1	Trim
16	120214-3	1	1	Center Panel Weld
17	382274-2	1	1	Trim-Lower Panel Not Shown
	V800648	3	3	#6-32 x 3/8 Phil Pan HD. With External Lock Washer Type "D" Self Tap. (M.P. For #17)

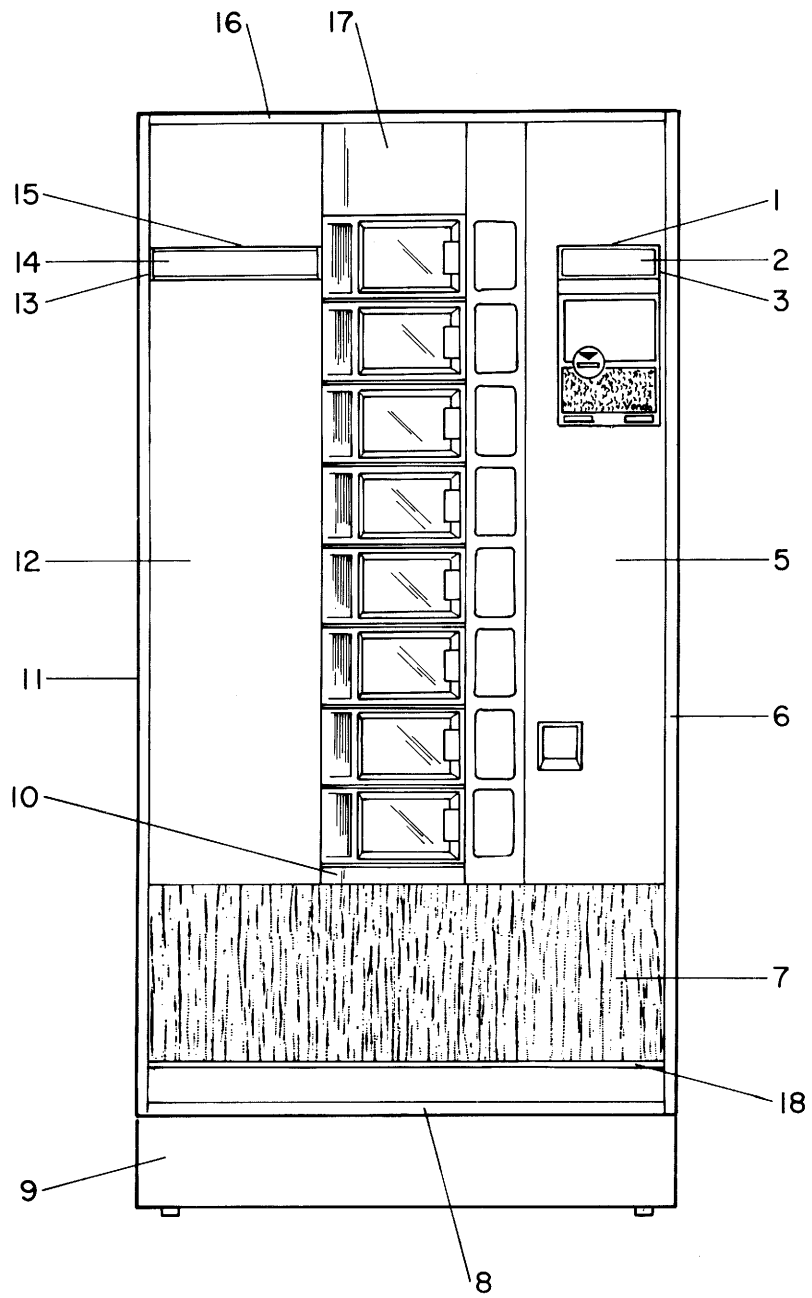


IMPERIAL CROWN

**FROZEN 130565
COLD 130565-1**

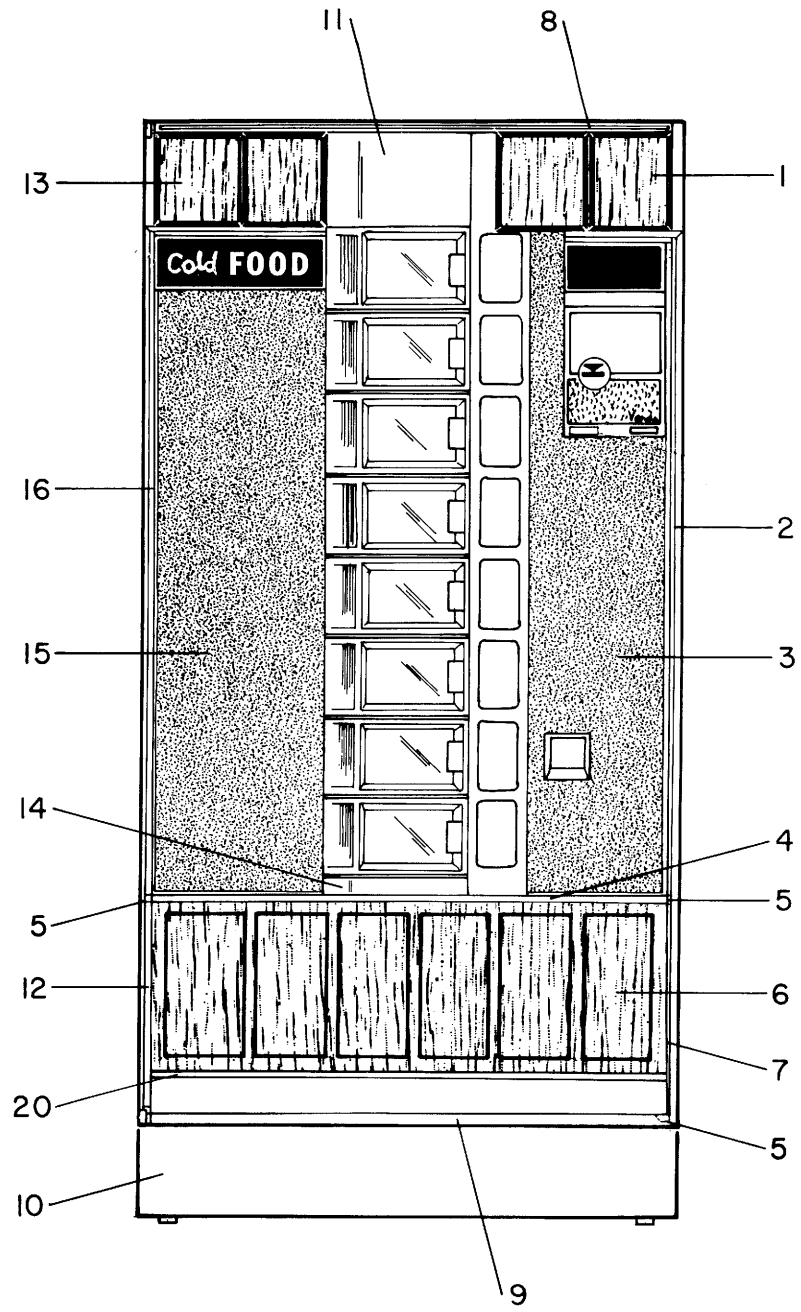
**COMPLETE STYLING KIT
COMPLETE STYLING KIT**

Item	Part No.	No. Req'd		Description
		Cold	Frozen	
1	130757	1	1	Vinyl Insert Assembly
2	382119-1	2	2	Frame Upper
	V800622	2	2	#10-16 x 1/2 Phil. Pan Hd. Type "AB" (M.P. For #2)
4	376441-4	1	1	Panel Vinyl (RH) (Only) (P/N 120853-21 Mech. Door Assembly)
5	380971-1	1	1	Trim (RH)
	V328708	3	3	#8-32 x 3/8 T-Bolt (M.P. For #5)
	V800956	3	3	#8-32 Hex Nut With External Lockwasher (M.P. For #5)
6	120214-3	1	1	Center Panel Assembly
7	380975-2	3	3	Trim - Lower
	V328708	12	12	#8-32 x 3/8 T-Bolt (M.P. For #7)
	V800956	12	12	#8-32 Hex Nut With External Lockwasher (M.P. For #7)
8	210060	1	1	Kick Panel Installation Kit
9	364845	1	1	Panel - Vinyl (Only) (P/N 121802-10 Kick Panel Assembly)
10	108411-3	1	1	Filler Assembly
11	382162	1	1	Trim Side (LH)
	V800956	3	3	#8-32 Hex Nut With External Lockwasher (M.P. For #11)
	V328708	3	3	#8-32 x 3/8 T-Bolt (M.P. For #11)
12	376440-5	1	1	Panel - Vinyl (LH) (Only) (P/N 120292-11 Mech. Door Assembly)
13	382119-2	1	1	Frame Upper
	V800622	4	4	#10-16 x 1/2 Phil. Pan Hd. Type "AB" (M.P. For #13)
14	130757-1	1	1	Vinyl Insert Assembly
15	382274-2	1	1	Trim - Lower Panel
	V800648	3	3	#6-32 x 3/8 Phil. Pan Hd. With Ext. Lockwasher Type "D" (MP For #15)



ROWE	FROZEN 129764	COMPLETE STYLING KIT
	COLD 129764-1	COMPLETE STYLING KIT

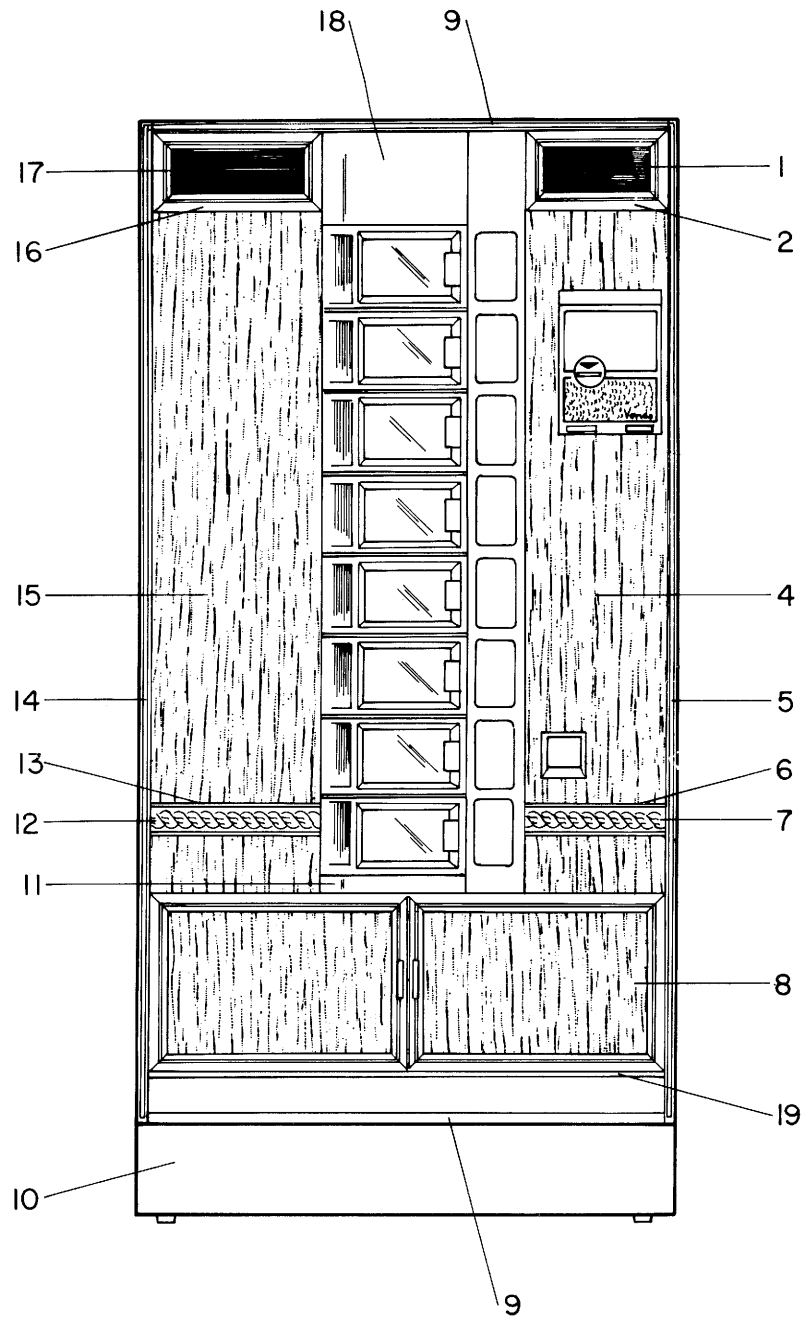
Item	Part No.	No. Req'd		Description
		Cold	Frozen	
1	3614643	1	1	Trim
2	361463-53	1	1	Strip - Product Ident
3	361399	2	2	Casting - Sign
	322904	2	2	Nut - (M.P. For #3)
5	376441-9	1	1	Panel Vinyl (RH) (Only) (P/N 120853-8 Mech. Door Assembly)
6	3809741	1	1	Trim Side (RH)
	V328708	3	3	#8-32 x 3/8 T-Bolt (M.P. For #6)
	V800956	3	3	#8-32 Hex Nut With External Lock Washer (M.P. For #6)
7	3648451	1	1	Panel - Vinyl (Only) (P/N 121802-4 Kick Panel Assembly)
8	380975-2	1	1	Trim - Lower
	V328708	4	4	#8-32 x 3/8 T-Bolt (M.P. For #8)
	V800956	4	4	#8-32 Hex Nut With External Lock Washer (M.P. For #8)
9	210060	1	1	Kick Panel Installation Kit
10	108411-4	1	1	Filler Weld Assembly
11	382163	1	1	Trim Side (LH)
12	376440-1	1	1	Panel Vinyl (LH) (Only) (P/N 120292-5 Mech. Door Assembly)
13	361399	2	2	Casting - Sign
	322904	2	2	Nut (M.P. For #13)
14	361463-56		1	Strip Product Ident.
	361463-55	1		Strip Product Ident.
15	361464-2	1	1	Trim
16	380992	1	1	Trim Top
	V328708	4	4	#8-32 x 3/8 T-Bolt (M.P. For #16)
	V800956	4	4	#8-32 Hex Nut With External Lock Washer (M.P. For #16)
17	120214-6	1	1	Center Panel Assembly
18	382274	1	1	Trim Lower Panel
	V800648	3	3	#10-16 x 1/2 Phil. Pan Hd. Type "D" (M.P. For #18)



Page 14

GRANDURA	FROZEN	125185	COMPLETE STYLING KIT
	COLD	125185-3	COMPLETE STYLING KIT

Item	Part No.	No. Req'd		Description
		Cold	Frozen	
1	370798	1	1	Upper Panel Door
	V801322	4	4	#8-18 x 1/2 Phil. Pan Hd. Hi-Lo Thread Tapping Screw (M.P. For #1)
2	V801011	4	4	#8 Flat Washer (M.P. For #1)
	379727-1	1	1	Trim
	V328708	2	2	#8-32 x 3/8 T-Bolt (M.P. For #2)
3	V800956	2	2	#8-32 Hex Nut With External Lock Washer (M.P. For #2)
	371690	1	1	Panel - Vinyl (RH) (Only) (P/N 120853-15 Mech. Door Assembly)
4	379727-7	1	1	Trim
	366444	4	4	Clip Moulding (M.P. For #4)
5	333967-5	3	3	Angle Corner
6	379489	1	1	Chestnut Leather Vinyl (Only) (P/N 121802-2 Kick Panel Assembly)
7	380976-7	1	1	Trim
	366444	2	2	Cup Moulding (M.P. For #7)
	V328708	1	1	#8-32 x 3/8 T-Bolt (M.P. For #7)
8	V800956	1	1	#8-32 Hex Nut With External Lock Washer (M.P. For #7)
	370799	1	1	Upper Trim - Door
	322904	4	4	Nut (M.P. For #8)
9	380989-1	1	1	Trim
	V328708	4	4	#8-32 x 3/8 T-Bolt (M.P. For #9)
	V800956	4	4	#8-32 Hex Nut With External Lock Washer (M.P. For #9)
10	210060	1	1	Kick Panel Installation Kit
11	120214-3	1	1	Center Panel Assembly
12	379650-2	1	1	Trim
	366444	1	1	Cup Moulding (M.P. For #12)
	V328708	1	1	#8-32 x 3/8 T-Bolt (M.P. For #12)
	V800956	1	1	#8-32 Hex Nut With External Lock Washer (M.P. For #12)
13	370797-3	1	1	Upper Panel Door
	V801322	5	5	#8-18 x 1/2 Phil. Pan Hd. Hi-Lo Thread Tapping Screw (M.P. For #13)
	V801011	5	5	#8 Flat Washer (M.P. For #13)
14	108411-3	1	1	Filler Assembly
15	371712	1	1	Panel - Vinyl (Only) (LH) (P/N 120292-6 Mech. Door Assembly)
16	379727-2	1	1	Trim
	V328708	2	2	#8-32 x 3/8 T-Bolt (M.P. For #16)
	V800956	2	2	#8-32 Hex Nut With External Lock Washer (M.P. For #16)
20	382274	1	1	Trim - Lower Panel
	V800648	3	3	#10-16 x 1/2 Phil. Pan Hd. Type "D--" (M.P. For #20)



GOLDEN FURNITURE

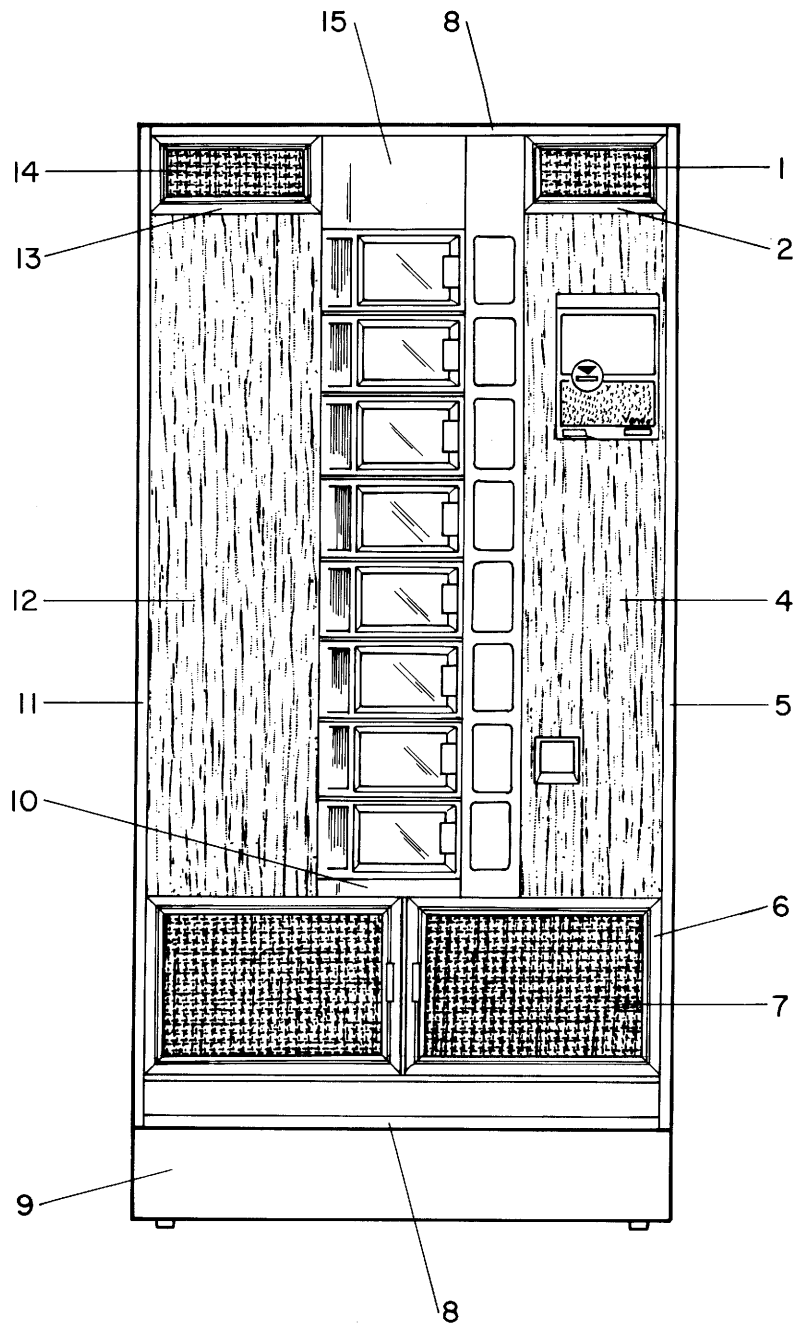
FROZEN 128588

COMPLETE STYLING KIT

COLD 128588-1

COMPLETE STYLING KIT

Item	Part No.	No. Req'd		Description
		Cold	Frozen	
1	376418-3	1		Strip Product Ident
	376418-11		1	Strip Product Ident
2	376419	1	1	Sign Frame
	V800611	4	4	#8-18 x 3/8 Phil. Pan Hd. Type "AB" (M.P. For #2)
4	376441	1	1	Panel Vinyl (Only) (P/N 120853-17 Mech. Door Assembly) (RH)
5	379648-5	1	1	Trim
	V328708	3	3	#8-32 x 3/8 T-Bolt (M.P. For #5)
	V800956	3	3	#8-32 Hex Nut With External Lock Washer (M.P. For #5)
6	376414	1	1	Trim - Lower
7	376417-3	1	1	Strip - Lower Trim
	V800520	2	2	#8-18 x 3/8 Phil. Flat Hd. Type "B" (M.P. For #7)
8	364845	1	1	Panel - Vinyl (Only) (P/N 121802-5 Kick Panel Assembly)
9	379648-4	2	2	Trim
	V328708	8	8	#8-32 x 3/8 T-Bolt (M.P. For #9)
	V800956	8	8	#8-32 Hex Nut With External Lock Washer (M.P. For #9)
10	210060	1	1	Kick Panel Installation Kit
11	108411-3	1	1	Filler Weld Assembly
12	376417-2	1	1	Strip - Lower Trim
13	376415	1	1	Trim - Lower
	V800520	2	2	#8-18 x 3/8 Phil. Flat Hd. Type "B" (M.P. For #13)
14	379648-6	1	1	Trim
	V328708	3	3	#8-32 x 3/8 T-Bolt (M.P. For #14)
	V800956	3	3	#8-32 Hex Nut with External Lock Washer (M.P. For #14)
15	376440	1	1	Panel Vinyl (LH) (Only) (P/N 120292-7 Mech. Door Assembly)
16	376420	1	1	Sign Frame
	V800611	4	4	#8-18 x 3/8 Phil. Pan Hd. Type "AB" (M.P. For #16)
17	376418	1		Strip Product Ident.
	376418-2		1	Strip Product Ident.
18	120214-3	1	1	Center Panel Weld Assembly
19	382274	1	1	Trim Lower Panel (Not Shown)
	V800648	3	3	#6-32 x 3/8 Phil. Pan Hd. With External Lock Washer Type "D" Self Tap (M.P. For #19)

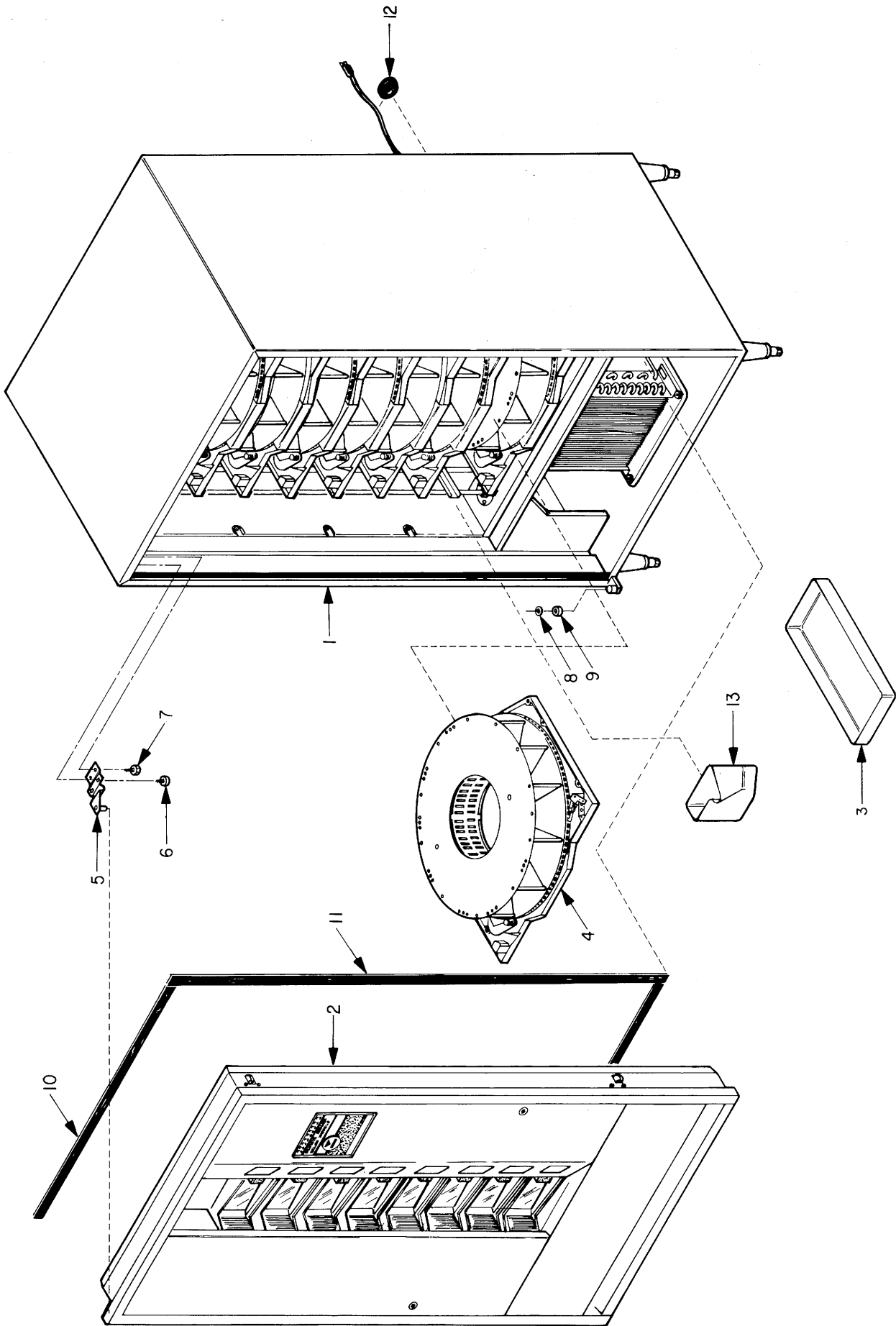


GOLDEN FURNITURE II

FROZEN 130534-1
COLD 130534

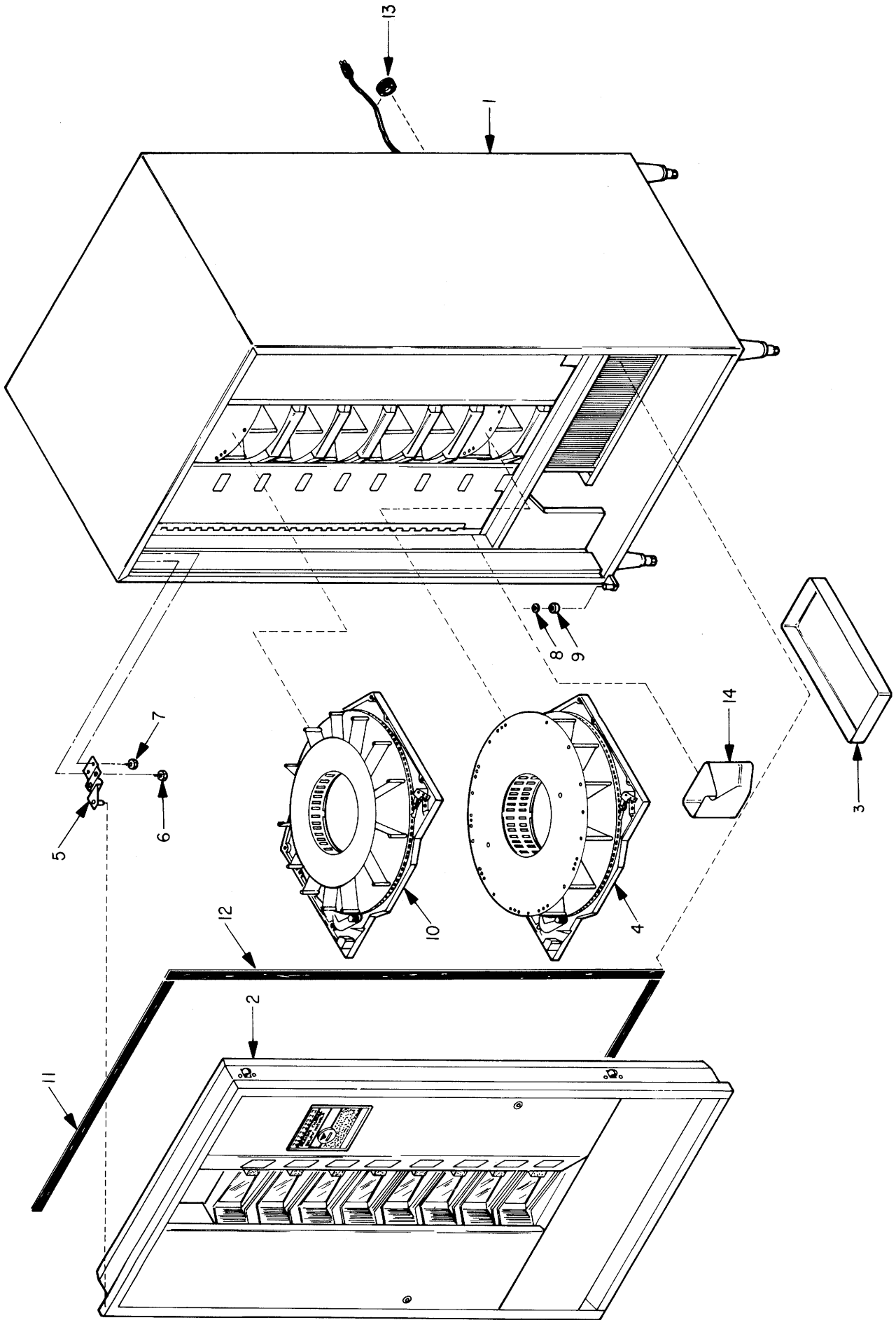
COMPLETE STYLING KIT
COMPLETE STYLING KIT

Item	Part No.	No. Req'd		Description
		Cold	Frozen	
1	130757-2	1	1	Vinyl Insert Assembly
2	382119-1	1	1	Frame Upper
	V800622	4	4	#10-16 x ½ Phil. Pan Hd. Type "AB" (M.P. For #2)
4	376441	1	1	Panel - Vinyl (Only) (P/N 120853-20 Mech. Door Assembly) (RH)
5	382182	1	1	Trim - Side
	V328708	3	3	#8-32 x ¾ T-Bolt (M.P. For #5)
	V800956	3	3	#8-32 Hex Nut with External Lock Washer (M.P. For #5)
6	382131	1	1	Frame Lower
	V800622	13	13	#10-16 x ½ Phil. Pan Hd. Type "AB" (M.P. For #6)
7	379566-42	1	1	Panel - Vinyl (Only) (P/N 121802-9 Kick Panel Assembly)
8	382183	2	2	Trim - Top
	V328708	8	8	#8-32 x ¾ T-Bolt (M.P. For #8)
	V800956	8	8	#8-32 Hex Nut With External Lock Washer (M.P. For #8)
9	210060	1	1	Kick Panel Installation Kit
10	108411-3	1	1	Filler Assembly
11	382181	1	1	Trim Side (LH)
	V328708	3	3	#8-32 x ¾ T-Bolt (M.P. For #11)
	V800956	3	3	#8-32 Hex Nut With External Lock Washer (M.P. For #11)
12	376440	1	1	Panel - Vinyl (Only) (P/N 120292-10 Mech. Door Assembly) (LH)
13	382119-2	1	1	Frame Upper
	V800622	4	4	#10-16 x ½ Phil. Pan Hd. Type "AB" (M.P. For #13)
14	130757-3	1	1	Vinyl Insert Assembly
15	120214-3	1	1	Center Panel Assembly



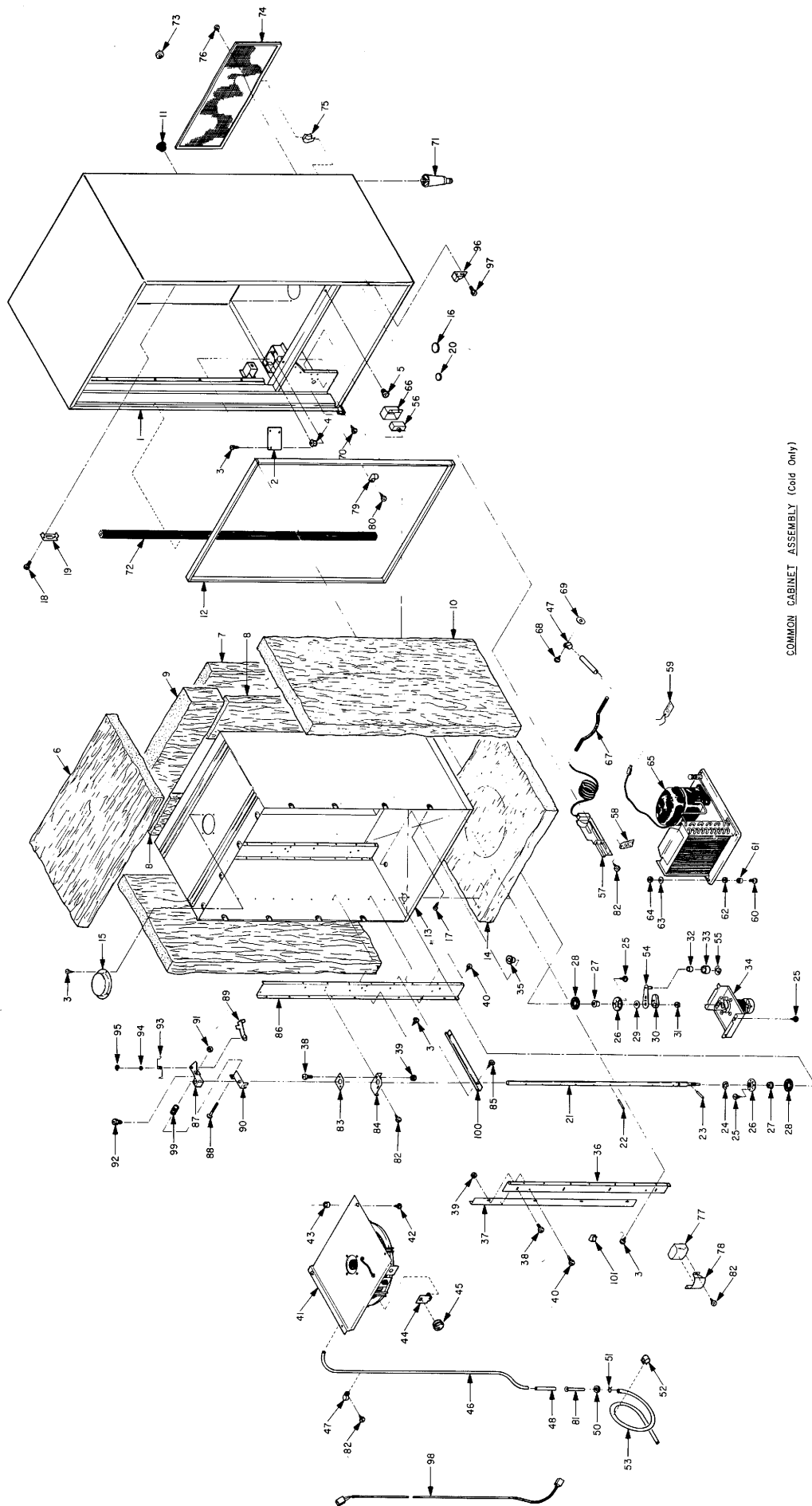
UNIT FINAL ASSEMBLY
(Cold Only)

Item	Part No.	Quantity	Description
1		1	Common Cabinet Assembly (See Page 24)
2		1	Common Door Assembly (See Page 56)
3	333364	1	Pan, Condensate
4		As Req'd	Tray & Drum Assembly (See page 42)
5	129271	1	Hinge Top Assembly
6	321339	2	¼-20 x ½ Hex HD With Ext. Lock Washer Type #1
7	324210	1	¼-20 x ½ Hex HD With Ext. Lock Washer MS
8	374479	1	Wear Washer
9	380781	1	Bearing Hinge
10	379890	2	Gasket, Health
11	379890-1	1	Gasket, Health
12	38132	1	Grommet
13	331314	1	Waste Container



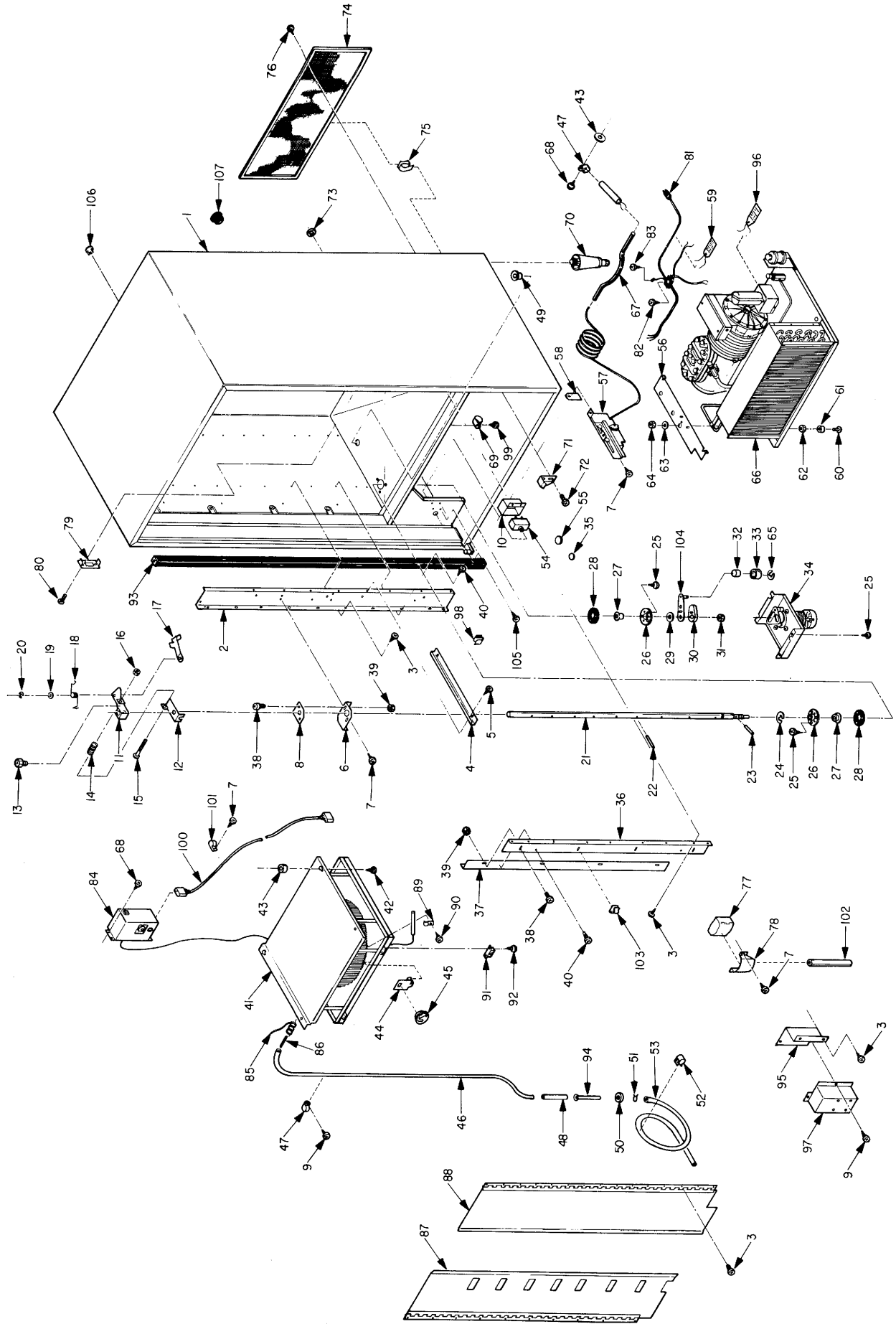
UNIT FINAL ASSEMBLY
(Frozen Only)

Item	Part No.	Quantity	Description
1		1	Common Cabinet Assembly (See Page 26)
2		1	Common Door Assembly (See Page 56)
3	333364	1	Pan, Condensate
4		As Req'd	Tray & Drum Assembly (See Page 42)
5	129271	1	Hinge Top Assembly
6	321339	2	¼-20 x ½ Hex HD With Ext. Lock Washer Type #1
7	324210	2	¼-20 x ½ Hex HD With Ext. Lock Washer MS
8	374479	1	Wear Washer
9	380781	1	Bearing-Hinge
10	109066-2	1	Tray & Drum Assembly (15 Comp.)
11	379890	2	Gasket, Health
12	379890-1	1	Gasket, Health
13	38132	1	Grommet
14	331314	1	Waste Container

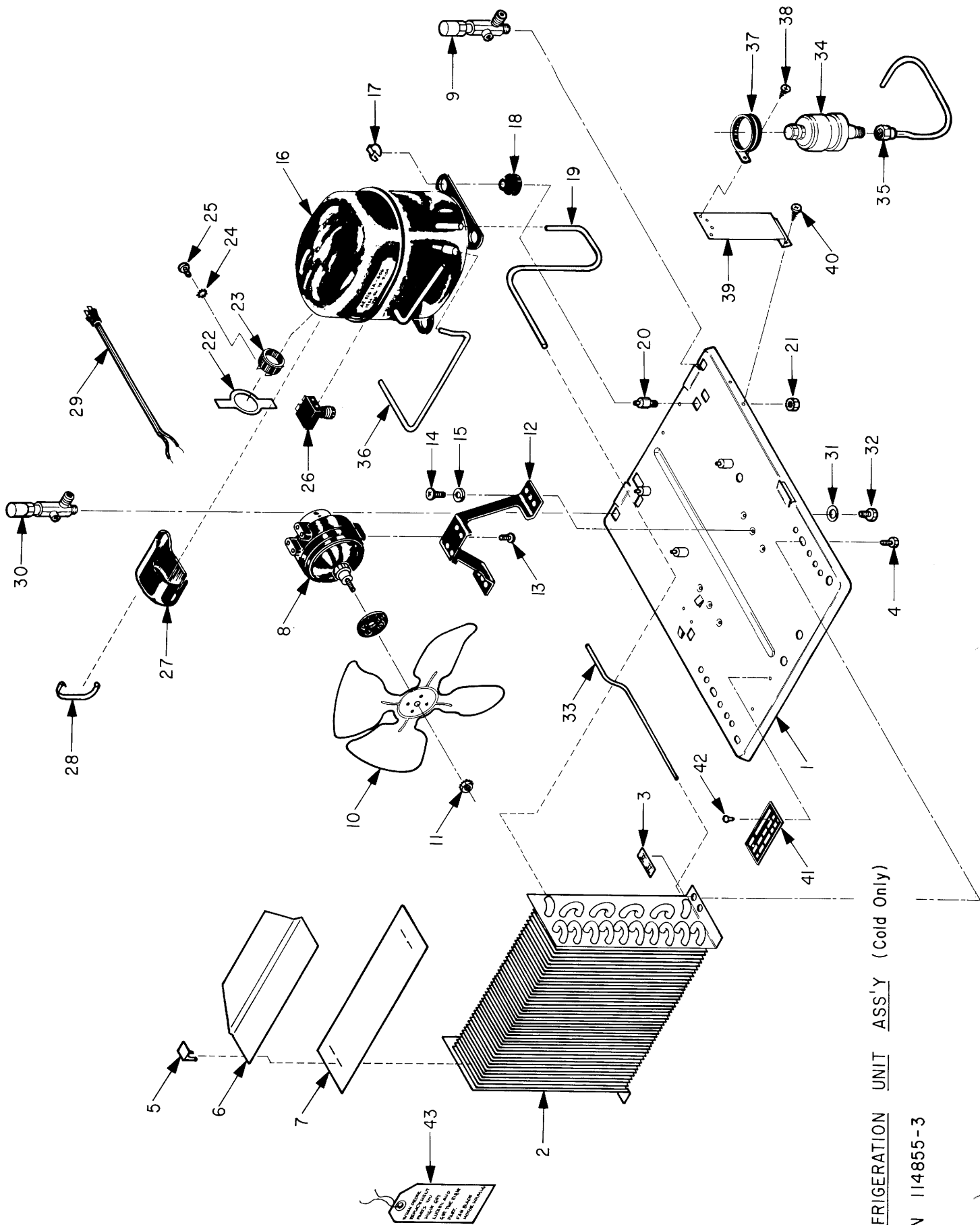


COMMON CABINET ASSEMBLY (Cold Only)

Item	Part No.	Quantity	Description	Item	Part No.	Quantity	Description
1	129274-4	1	Cabinet Weld Assembly	52	46212-1	3	Clip - Tinnerman
2	346513	1	Cover Plate	53	340061	1	Tubing - Drain
3	V800479	41	#10-16 x 3/8 Phil Pan HD. Type "AB"	54	108155	1	Arm Rivet Assembly
4	329945	3	Nut Snap-In	55	V801080	1	Retainer Ring 5/16 Type "E"
5	320975	14	Nut Snap-In .375 SQ. Hole	56	379259-2	1	Circuit Breaker
6	342308	1	Insulation - Top	57	111528-1	1	Auto Timer Assembly
7	361086	1	Insulation - Rear	58	337491	1	Tag - Health Timer
8	361087	2	Insulation - Rear	59	341702	1	Tag
9	330861	1	Insulation - Rear Top	60	V329258	3	1/4-20 x 1 1/4 Carriage Bolt
10	361089	2	Insulation Side	61	329419	3	Spacer
11	374406	3	Plug Grommet	62	V800895	3	1/4-20 Hex Nut
12	377747	165	Gasket - Cabinet (Inches)	63	V801016	3	1/4 Plan Washer
13	120027-2	1	Liner Weld Assembly	64	V800884	3	1/4-20 Washer Insert Hex Lock Nut
14	330862	1	Insulation - Bottom	65	114855-3	1	Refrigeration Unit Assembly (See Page 28)
15	346513	1	Cover Plate	66	379447	1	Cover - Breaker
16	330135	2	Plug - Bottom	67	V801164	22	Tubing - Black .437 I.D. Plastic Inches
17	V800876	17	1/4-14 x 3/4 Phil Truss HD Type "BT"	68	V800553	2	#10-12 x 1" Phil Truss HD Type "A"
18	V800234	4	1/4-20 x 3/8 Phil Truss HD M.S.	69	37236	2	Spacer
19	379875	2	Strike Latch	70	V800725	2	#6-32 x 3/8 Phil Pan HD Type "D"
20	334128	4	Plastic Plug	71	60040	4	Leg
21	361219	1	Shaft	72	368838	1	Gasket
22	V801146	1	Pin 3/16 x 1 3/4 Coiled	73	382861	1	Plug Hole
23	V801145	1	Pin 1/8 x 1 Coiled Tube	74	332929	1	Screen
24	V801084	1	Retaining Ring 1/2 Type "E"	75	332930	3	Clip - Screen
25	V800622	10	#10-16 x 1/2 Phil Pan HD Type "AB"	76	V800535	3	#8-18 x 1/2 Phil Truss HD Type "AB"
26	108158	2	Bearing Weld Assembly	77	321199	1	Gasket - Line Wire Protector
27	330905	2	Bushing	78	320895	1	Line Wire Protector
28	330909	2	Gasket	79	324099-6	2	Clamp
29	V801020	1	% Plain Washer	80	V800766	2	#8-32 x 1/2 Phil Pan HD Type "T"
30	112667	1	Arm Assembly	81	333985-1	1	Tube Drain
31	V800949	1	1/4-16 Hex Nut With Ext. Lock Washer	82	V800638	5	#10-16 x 3/8 Phil Pan HD Type "B"
32	330898	1	Bearing	83	331501	2	Plate - Shaft
33	330899	1	Roller	84	351704	2	Bracket - Shaft
34	108149-4	1	Drive Assembly (See Page 40)	85	V800566	32	#6-20 x 3/8 Slotted Truss HD With Ext. Lock Washer Type "B"
35	333986	2	Grommet	86	361212	2	Shelf Support LH
36	361205	2	Bracket Shelf Support	87	338961	1	Release Arm Cam
37	361204	2	Shelf Support RH	88	327253-1	1	#10-24 x 1 3/8 Carriage Bolt
38	V800364	12	#10-24 x 1/2 Phil Pan HD With Ext. Lock Washer M.S.	89	108168	1	Drive Paul Assembly
39	V800894	12	#10-24 Hex Nut	90	338960	1	Drive Arm - Drum
40	342624-1	6	#8-32 x 3/8 Phil Pan HD Self Drilling	91	V800882	1	#10-24 Washer Insert Hex Lock Nut
41	120060	1	Evaporator Assembly (See Page 30)	92	339127	1	#10-24 x 3/8 Hex HD With Washer Tapite
42	V800429	4	1/4-20 x 3/8 Phil Hex HD With Ext. Locker M.S.	93	331186	1	Spring
43	37237	2	Washer - Insulation	94	V801015	1	#12 Plain Washer
44	382044	1	Holder	95	V801075	1	Retainer Ring 7/32 Dia. Type "E"
45	382043	1	Thermometer	96	341865	2	Support - Door
46	90729-10	1	Hose Drain	97	V800268	4	1/4-20 x 1/2 Phil Hex HD M.S.
47	324099-4	2	Clamp	98	120078	1	Wire Assembly
48	376193	1	Tube Drain	99	331183	1	Spring
50	38132	1	Grommet - Drill Tube	100	333547	16	Shelf Channel
51	339369	1	Clamp - Hose	101	46212-1	3	Clip Tinnerman



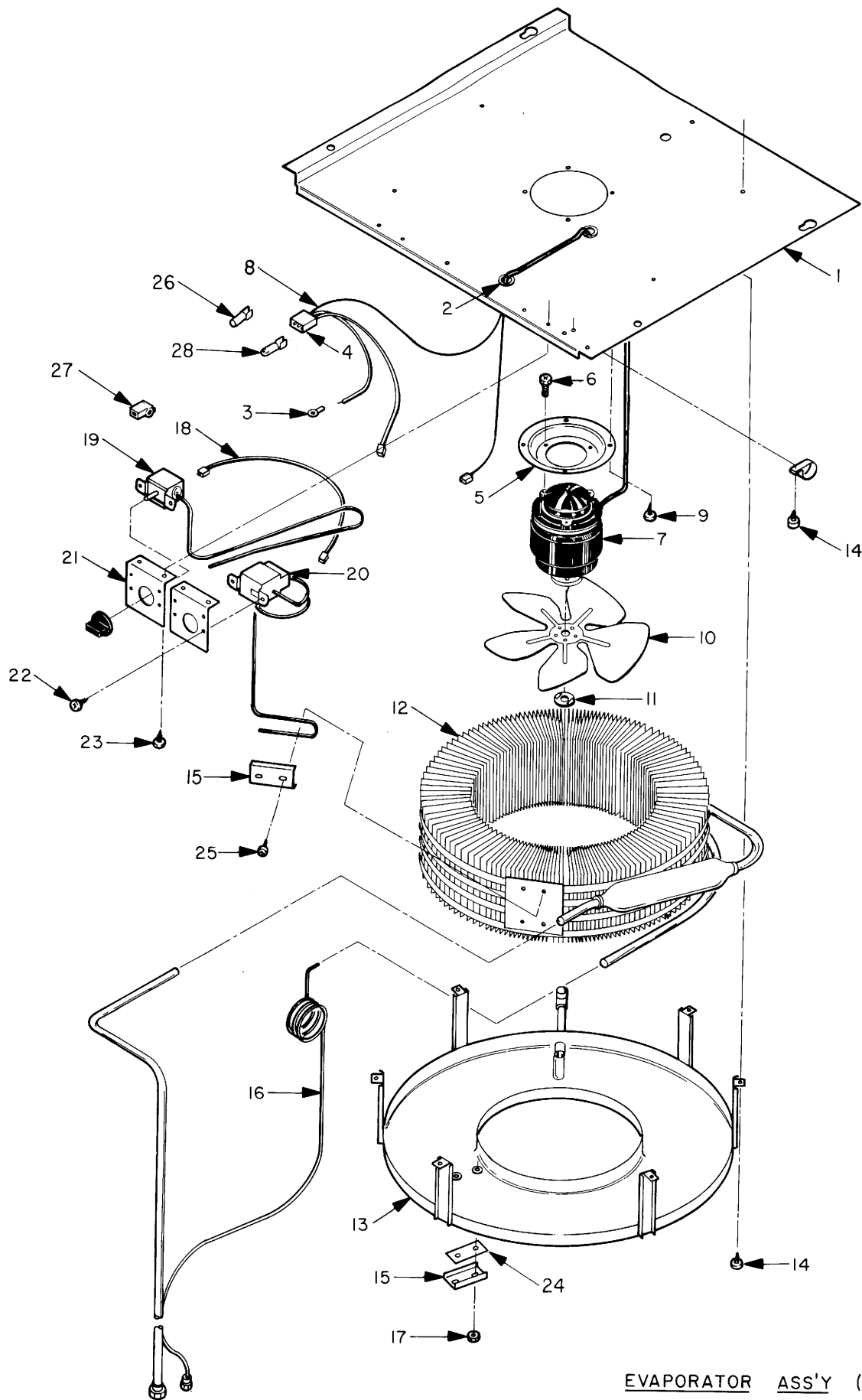
Item	Part No.	Quantity	Description	Item	Part No.	Quantity	Description
1	120042-4	1	Cabinet Insulation Assembly	58	337491	1	Tag Health Timer
2	361212	2	Shelf Support LH	59	341702	1	Tag
3	V800479	34	#10-16 x 3/8 Phil Pan HD Type "AB"	60	V329258	4	1/4-20 x 1 1/4 Carriage Bolt
4	333547	16	Shelf Channel	61	32419	4	Spacer
5	V800566	32	#6-20 x 3/8 Slotted Truss HD With External Lock Washer Type "B"	62	V800895	4	1/4-20 Hex Nut
6	351704	2	Bracket-Shaft	63	V801016	4	1/4 Plain Washer
7	V800636	3	#8-18 x 1/2 Phil Pan HD Type "B"	64	V800884	4	1/4-20 Washer Insert Hex Lock Nut
8	331501	2	Plate-Shaft	65	V801080	1	Retainer Ring - 5/16 Type "E"
9	V800638	3	#10-16 x 3/8 Phil Pan HD Type "B"	66	128648	1	Refrig. Unit Assembly (See Page 32)
10	379447	1	Cover-Breaker	67	V801164	22	Tubing - Black 4371 Plastic (Inches)
11	338961	1	Release Arm CAM	68	V800553	6	#10-12 x 1" Phil Truss HD Type "A"
12	338960	1	Drive Arm Drum	69	324099-8	2	Clamp
13	339127	1	#10-24 x 3/8 Hex HD With Washer Taprite	70	60040	4	Leg
14	331183	1	Spring	71	341865	2	Support-Door
15	327253-1	1	10-24 x 1 1/4 Carriage Bolt	72	V800268	4	1/4-20 x 1/2 Phil Hex HD M.S.
16	V800882	1	#10-24 Washer Insert Hex Lock Nut	73	382861	1	Plug-Hole
17	108168	1	Drive Pawl Assembly	74	332929	1	Screen
18	331186	1	Spring	75	332930	3	Cup-Screen
19	V801015	1	#12 Plain Washer	76	V800535	3	#8-18 x 1/2 Phil Truss HD Type "AB"
20	V801075	1	Retainer Ring 7/32 Dia Type "E"	77	321199	1	Gasket-Line Wire Protector
21	361219	1	Shaft	78	320895	1	Line Wire Protector
22	V801146	1	Pin 3/16 x 1 1/4" Coiled	79	379875	2	Strike Latch
23	V801145	1	Pin 1/8 x 1 Coiled Type	80	V800234	4	1/4-20 x 3/8 Phil Truss HD M.S.
24	V801084	1	Retainer Ring	81	379402-1	1	Service Card
25	V800622	7	#10-16 x 1/2 Phil Pan HD Type "AB"	82	V800512	1	#10-16 x 1 1/8 Phil Pan HD Type "B"
26	108158	2	Bearing Weld Assembly	83	V800664	1	#10-24 x 3/8 Phil Pan HD Type "D"
27	330905	2	Bushing	84	120151	1	Defrost Control Box Assembly (See Page 36)
28	330909	2	Gasket	85	334042-3	1	Heather Assembly
29	V801020	1	3/8 Plain Washer	86	V801163	2	Plastic Tube
30	112667	1	Arm Assembly	87	120082	1	Door-Baffle LH
31	V800949	1	3/8-16 Hex Nut With External Lock Washer	88	120081	1	Door-Baffle RH
32	330898	1	Bearing	89	332456	1	Clamp
33	330899	1	Bearing Roller	90	V800781	1	#8-36 x 3/8 Phil Pan HD Type "T"
34	108149-4	1	Drive Assembly (See Page 40)	91	348201	2	Magnetic Catch
35	334128	4	Plastic Plug	92	V800729	4	#8-32 x 3/8 Phil Pan HD Type "D"
36	361205	2	Bracket-Shelf Support	93	368838	1	Gasket
37	361204	2	Shelf Support RH	94	333985-1	1	Tube Drain
38	V800364	12	#10-24 x 1/2 Phil Pan HD. With External Lock Washer M.S.	95	366789	1	Mounting Bracket - TRANS
39	V800894	12	#10-24 Hex Nut	96	360860	1	Tag
40	342624-1	6	#8-32 x 7/16 Phil Pan HD. Self Drilling	97	118650	1	Transformer Cover Assembly (See Page 48)
41	120062	1	Evaporator Assembly (See Page 34)	98	44805	2	Clip-Tinnerman
42	V800429	4	1/4-20 x 3/8 Phil Hex HD With External Lock Washer M.S.	99	V800766	2	#8-32 x 1/2 Phil Pan HD Type "T"
43	37236	4	Washer Insulation	100	120226	1	Wire Assembly
44	382044	1	Holder	345785-1	1	Recep. - 3 Terminal	
45	382043	1	Thermometer	320196	3	Term - Male	
46	90729-10	1	Hose Drain	345736-1	1	Plug 3 Term	
47	324099-4	3	Clamp	320195	3	Terminal - Female	
48	376193	1	Tube Drain	V801163	83	Plastic Tubing (Inches)	
49	333986	1	Grommet	V801175-6	21	Electric Wire (Feet)	
50	38132	1	Grommet Drain Tube	324099-4	3	Clamp	
51	339369	1	Clamp-Hose	365271-1	1	Insulation	
52	321304	1	Clip	46212-1	3	Clip-Tinnerman	
53	340061	1	Tubing - Drain	108155	1	Arm Rivet Assembly	
54	379259-4	1	Circuit Breaker	V800725	2	#6-32 x 3/8 Phil Pan HD Type "D"	
55	330135	2	Plug Button	332556	3	Plug - Button	
56	363614	2	Clamp	374406	3	Plug - Crommet	
57	111528-1	1	Auto Timer Assembly				



REFRIGERATION UNIT ASS'Y (Cold Only)

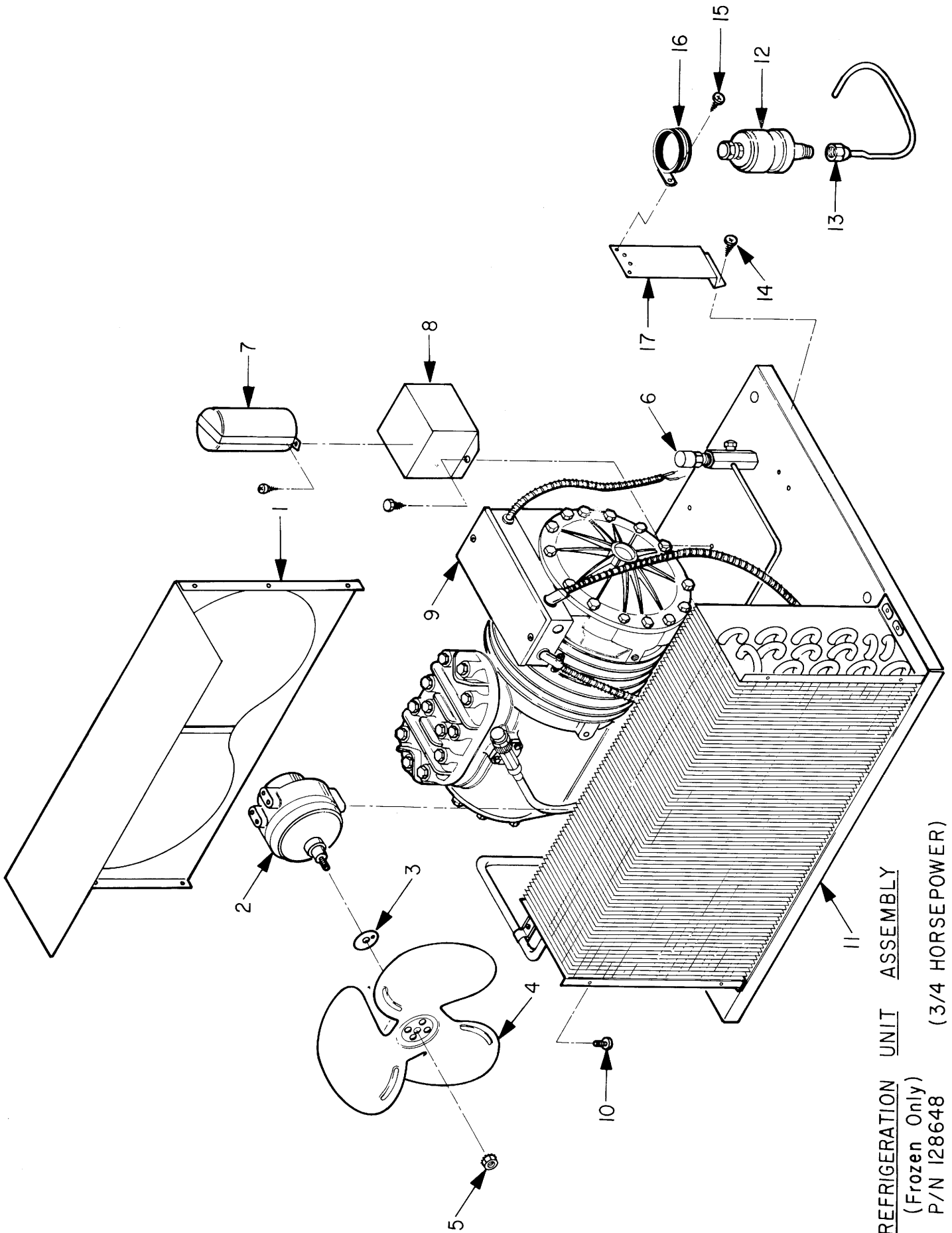
P/N 114855-3

Item	Part No.	Quantity	Description
1	343839	1	Base - Refrig.
2	343848	1	Condenser
3	916923	2	Nut - Condenser
4	V800267	4	¼-20 x ¾ Phil Hex HD M.S.
5	366640	2	Clip - Retaining
6	379441	1	Guard - Fan
7	351172	1	Shroud
8	42321-36	1	Motor - Fan
9	343953	1	Valve - Shut Off
10	320766	1	Blade - Fan
11	V42323	1	¼-20 RD, Flat Type Spring Nut
12	358154-1	1	Fan Support
13	V800371	4	#8-36 x ¾ Phil Pan Hd With Ext. Lock Washer M.S.
14	V800836	2	¼-20 x ½ Hex HD With Ext. Lock Washer Type "T"
15	V801032	2	¼ Regular Helical Spring Lock Washer
16	350988	1	Compressor 1/3 HP
17	347834	2	Spring Cup
18	323090-1	4	Crommet
19	343842	1	Discharge Line
20	343872	2	Compressor Mounting Stud
21	V800949	2	¾-16 Hex Nut with Ext. Lock Washer
22	344305	1	Overload Tension Spring
23	45052-27	1	Protector - Overload
24	V801038	3	#6 Star Washer
25	V800055	3	#6-32 x ¼ Slotted Pan HD Brass M.S.
26	333894-15	1	Relay - Starting
27	344308	1	Terminal Cover
28	344306	1	Bale Strap
29	344105	1	Cord - Compressor
30	344368	1	Valve - Base
31	V801018	2	5/16 Plain Washer
32	V800445	2	5/16-24 x ¾ Hex HD With Ext. Lock Washer M.S.
33	343948	1	Tube
34	42215	1	Drier - Filter
35	108144	1	Drier Tube Assembly
36	345426	1	Tube - Suction
37	328930	1	Clamp - Drier
38	V800566	2	#6-20 x ¾ Slotted Truss HD With Ext. Lock Washer Type "B"
39	334052-1	1	Bracket - Service Cord
40	V800638	2	#10-16 x ¾ Phil Pan HD Type "B"
41	338154	1	Name Plate
42	323064	2	Drive Screw
43	353805	1	Tag - Refrig. Unit VS33
	379403	1	Service Cord (Not Shown)
	334341	1	Tie (Not Shown)
	V800512	1	#10-16 x 1¾ Phil Pan HD Type "B" (Not Shown)
	V800664	1	#10-24 x ¾ Phil Pan HD Type "D" (Not Shown)
	V801180	7	Copper Tubing (Inches) (Not Shown)
	327282	2	Flare Nut (Not Shown)



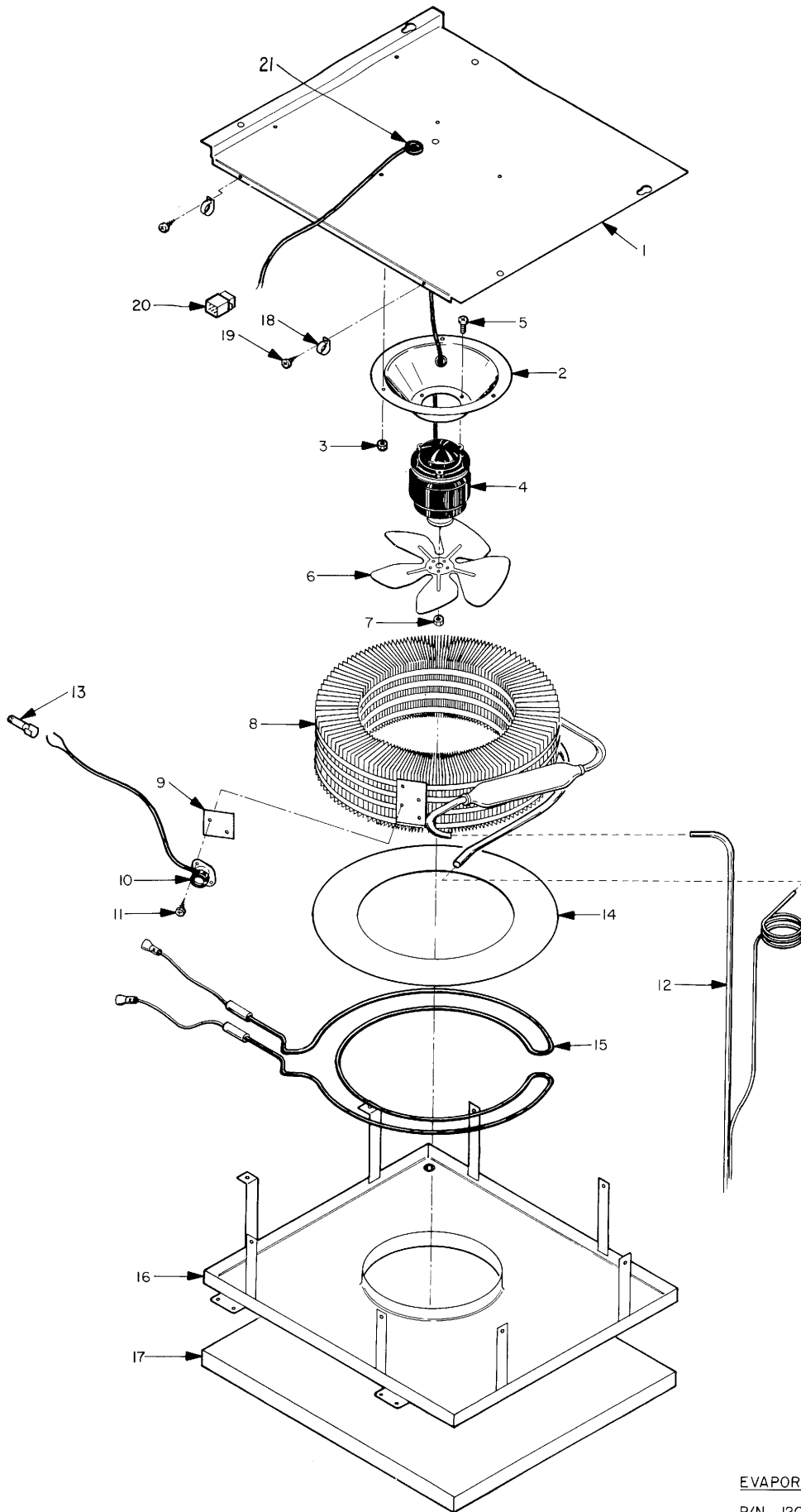
EVAPORATOR ASS'Y (Cold Only)
P/N 120060

Item	Part No.	Quantity	Description
1	33885	1	Bracket-Evaporator
2	46349	2	Grommet - Strain Relief
3	320362	1	Eyelet
4	345733-1	1	Plug-3 Terminal
5	330886	1	Mount-Evap. Motor
6	V800371	3	#8-36 x 3/8 Phil Pan HD With External Lock Washer M.S.
7	108465-2	1	Fan Motor Assembly
8	118649	1	Harness Assembly
9	V800638	4	#10-16 x 3/8 Phil Pan HD Type "B"
10	350830	1	Blade - Fan
11	V42323	1	Speed Nut
12	330884	1	Evaporator
13	120115	1	Evaporator Assembly
	324099-3	1	Clamp (Not Shown)
14	V800570	1	#10-16 x 3/8 Phil Truss HD Type "B"
15	42485	2	Bracket - Temp Pick Up
16	120080	1	Cap Suction Line Assembly
17	V800956	2	#8-32 Hex Nut With External Lock Washer
18	121918	1	Wire Assembly
19	43406	1	Switch - Temp. Control
20	363624	1	Temp. Control
21	42127	2	Bracket - Switch
22	V800354	4	#8-32 x 3/8 Phil Pan HD With External Lock Washer M.S.
23	V800569	4	#10-16 x 1/4 Phil Truss HD Type "B"
24	365218	1	Insulator
25	V800539	2	#8-18 x 1/2 Phil Truss HD With Plain Flat Washer Type "AB"
26	44617	1	Terminal - Female
27	341203	1	Cover - Flag
28	320196	2	Terminal - Male



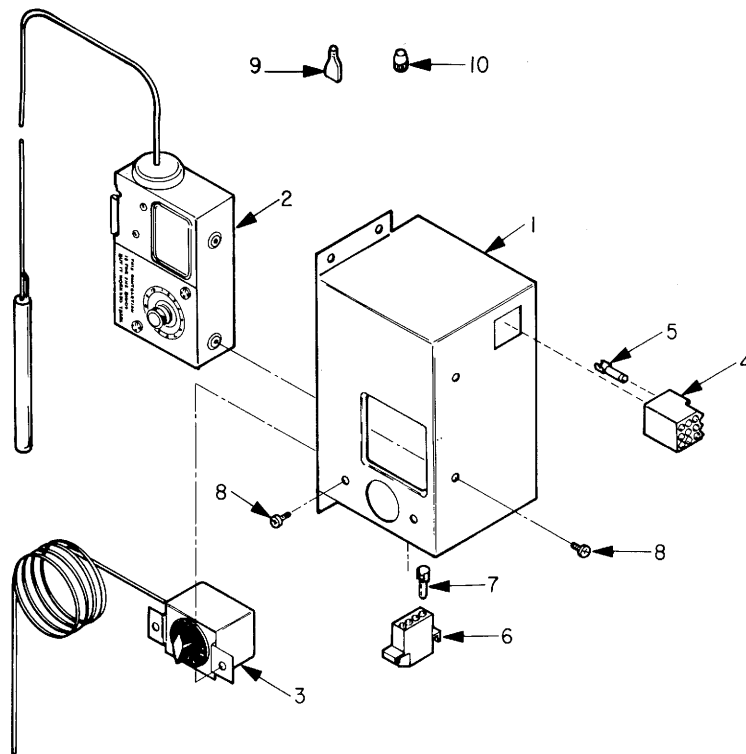
REFRIGERATION UNIT ASSEMBLY
 (Frozen Only)
 P/N 128648 (3/4 HORSEPOWER)

Item	Part No.	Quantity	Description
1	343032	1	Shroud
2	42321-36	2	Motor - Fan
3	42322 or 32424	1	Gasket
4	332666	2	Blade - Fan
5	V800959	2	¼-20 Hex Nut With External Lock Washer
6	343953	1	Valve Shut Off
7	340274-1	1	Starting Capacitor
8	340273	1	Starting Relay
9	343028	1	Overload
10	V800370	4	#8-36 x ¾ Slotted Round HD With External Lock Washer M.S.
11	360861	1	Condensing Unit (YS50CB)
12	42215	1	Filter-Drier
13	108795	1	Drier Tube Assembly
14	V800638	2	#10-16 x ¾ Phil Pan HD Type "B"
15	V800566	1	#6-20 x ¾ Slotted Truss Type "B" HD With External Lock Washer
16	328930	1	Clamp
17	334052-1	1	Bracket - Service Cord



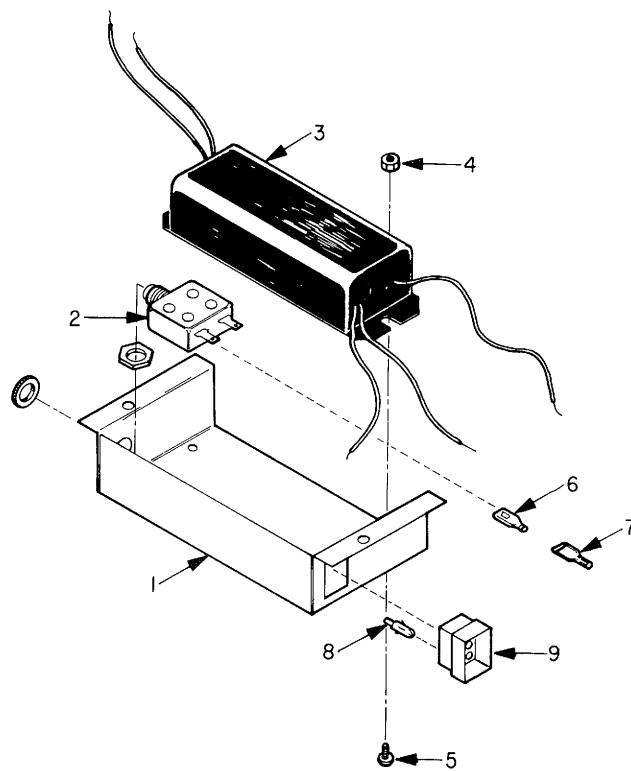
EVAPORATOR ASS'Y (Frozen Only)
P/N I20062

Item	Part No.	Quantity	Description
1	108839	1	Bracket Weld Assembly
2	332602	1	Mount-Evap. Motor
3	V800952	3	#10-32 Hex Nut With External Lock Washer
4	108800-3	1	Fan Motor Assembly
5	V800371	3	#8-36 x 3/8 Phil Pan HD With External Lock Washer M.S.
6	350830	1	Blade - Fan
7	V800959	1	1/4-20 Hex Nut With External Lock Washer
8	332503	1	Evaporator
9	335512	1	Insulator
10	114527-1	1	Thermostat Assembly
11	V800781	2	#8-36 x 3/8 Phil Pan HD Type "T"
12	120079	1	Refrig. Line Assembly
13	320196	2	Terminal - Male
14	108844	1	Deflector Weld Assembly
15	114526-1	1	Heater Element Assembly
16	108798-1	1	Drain Pan Weld Assembly
17	332510	1	Insulation
18	324099-4	2	Clamp
19	V800479	6	#10-16 x 3/8 Phil Pan HD Type "AB"
20	345003-1	1	Plug - 9 Pin
21	332531	2	Grommet - Strain Relief



DEFROST CONTROL BOX ASS'Y

P/N 120151



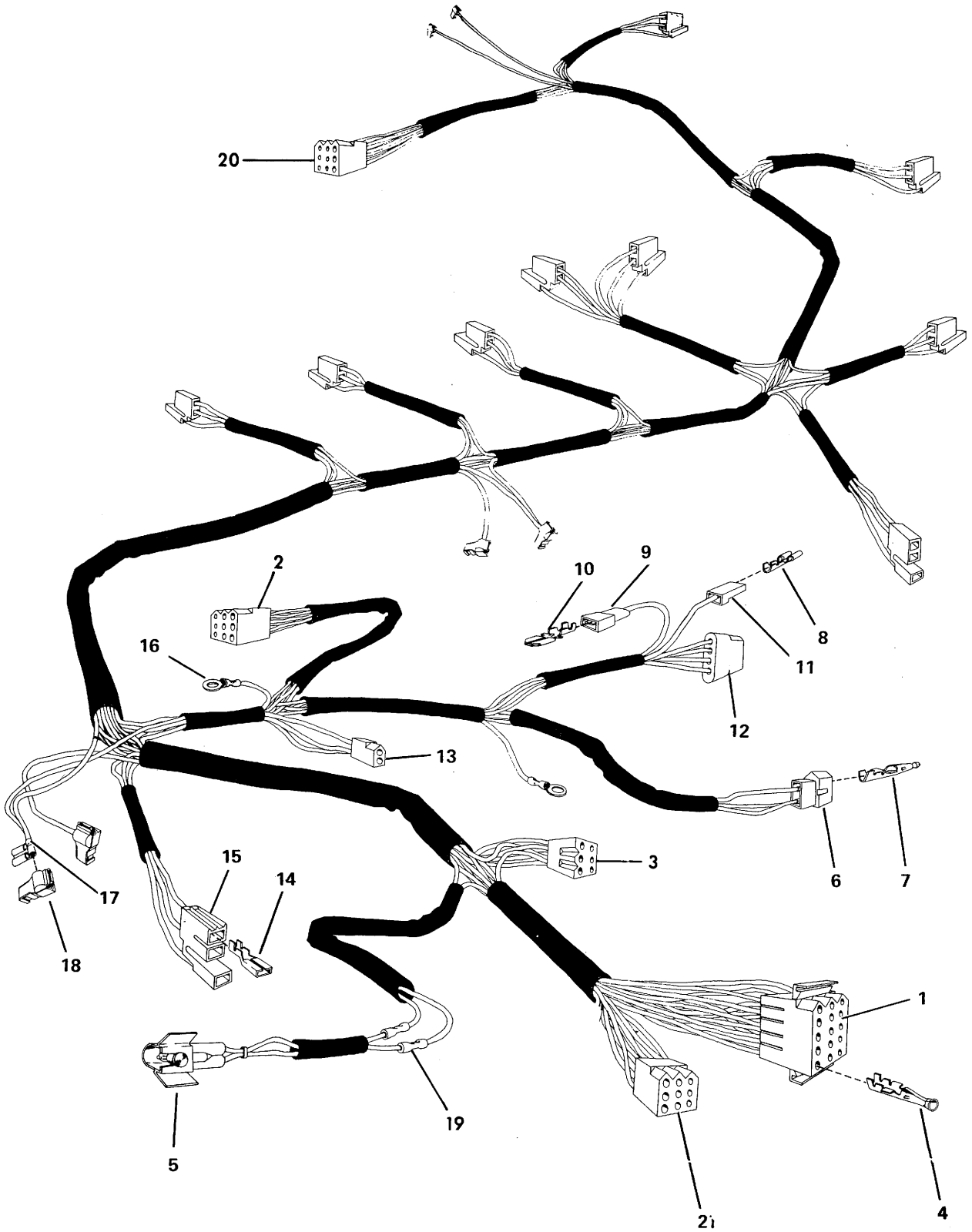
BALLAST and BREAKER ASS'Y

P/N 129022

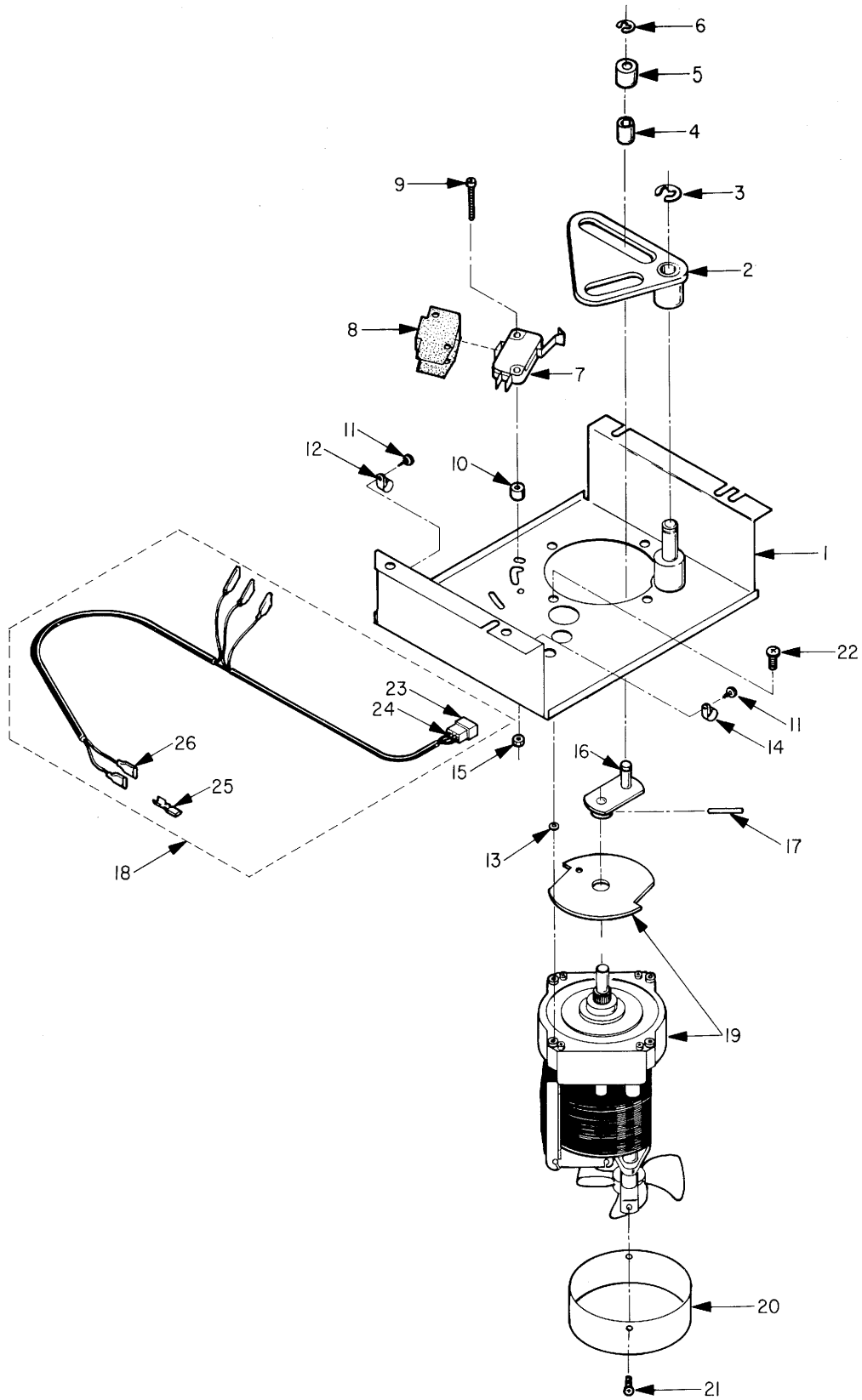
Item	Part No.	Quantity	Description
1	361303	1	Defrost Control Box
2	345702	1	Defrost Control
3	345701	1	Temperature Control
4	345004	1	Receptacle - 9 Terminal
5	320915	8	Terminal - Female
6	345375	1	Plug - 4 Term
7	320196	4	Terminal - Male
8	V800082	4	#8-32 x 3/8 Phil Pan HD M.S.
9	321093	10	Terminal - Female Spade
10	43842	1	Connector - Closed End

Item	Part No.	Quantity	Description
1	379398	1	Box Ballast
2	379259-3	1	Circuit Breaker 10 AMP
3	350266	1	Ballast
4	V800881	2	#8-32 Washer Insert Hex Lock Nut
5	V800083	2	#8-32 x 1/2 Phil Pan HD M.S.
6	321093	2	Terminal - Female
7	321096	2	Cover - Terminal Female
8	320196	8	Terminal - Male
9	345003	1	Plug - 9 Terminal

DOOR HARNESS ASSEMBLY



Item	Part No.	Quantity	Description
1	345006	1	Plug-15 Term
2	345004-1	1	Receptacle - 9 Term
3	345738-1	1	Receptacle - 6 Term
4	320195	39	Terminal - Female
5	358835	1	Neon Lamp
6	345005-1	1	Plug - 2 Term
7	320196	14	Term - Male
8	321093	1	Term - Female
9	321094	1	Cover - Terminal - Male
10	321095	1	Terminal - Male
11	321096	1	Cover - Terminal - Female
12	345736-1	1	Receptacle - 4 Term
13	345008-1	1	Recep - 2 Terminal
14	360805	26	Terminal
15	360806	9	Cover - Terminal (Triple)
16	320362	2	Eyelet
17	44617	2	Terminal - Female Quick Connect
18	341203	2	Cover - Flag
19	328664	2	Connector - Crimp on
20	345740-6	1	Receptacle 12 - Term
21	345740-1	1	Receptacle - 12 Term

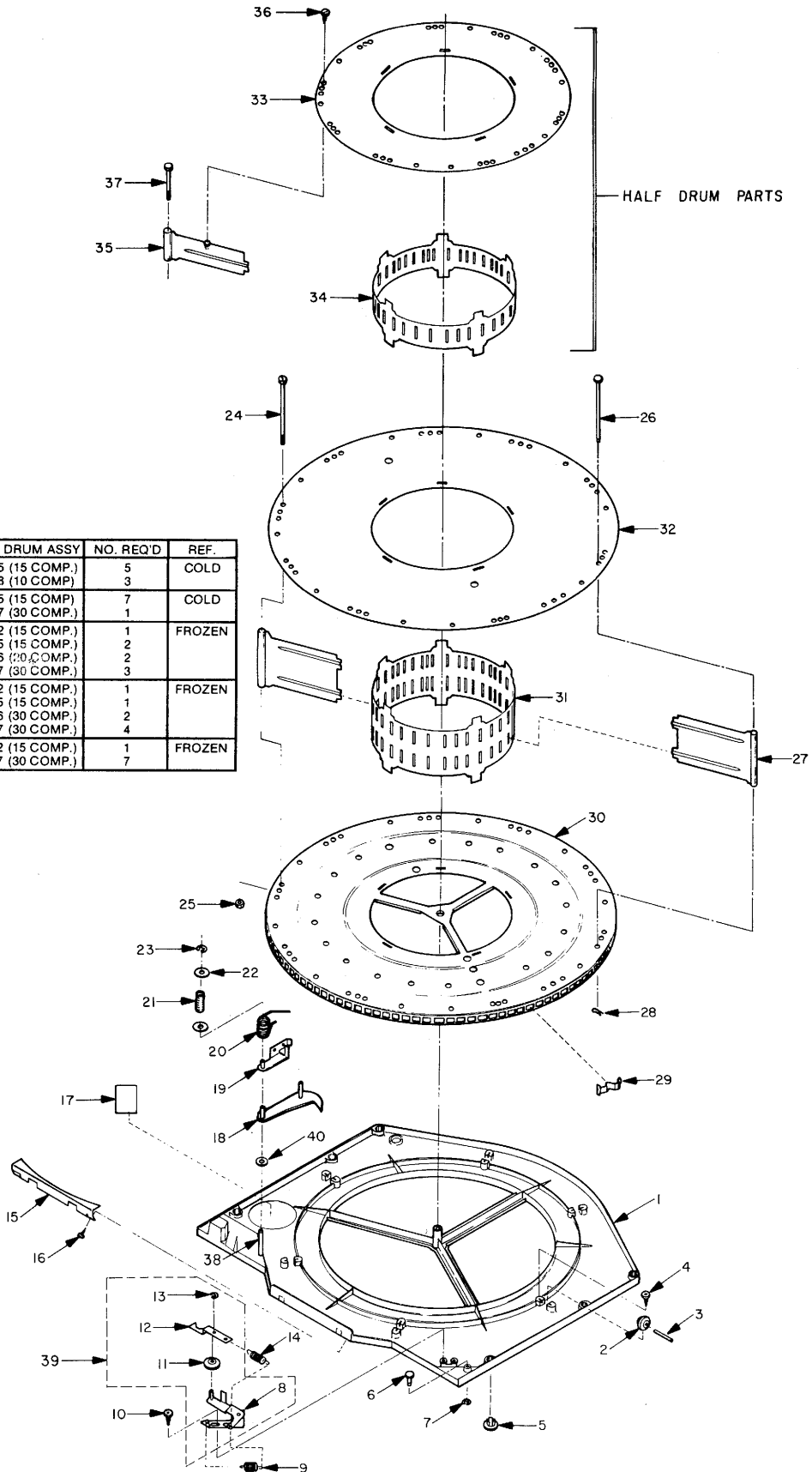


COMPLETE DRIVE ASSEMBLY

P/N 108149-4

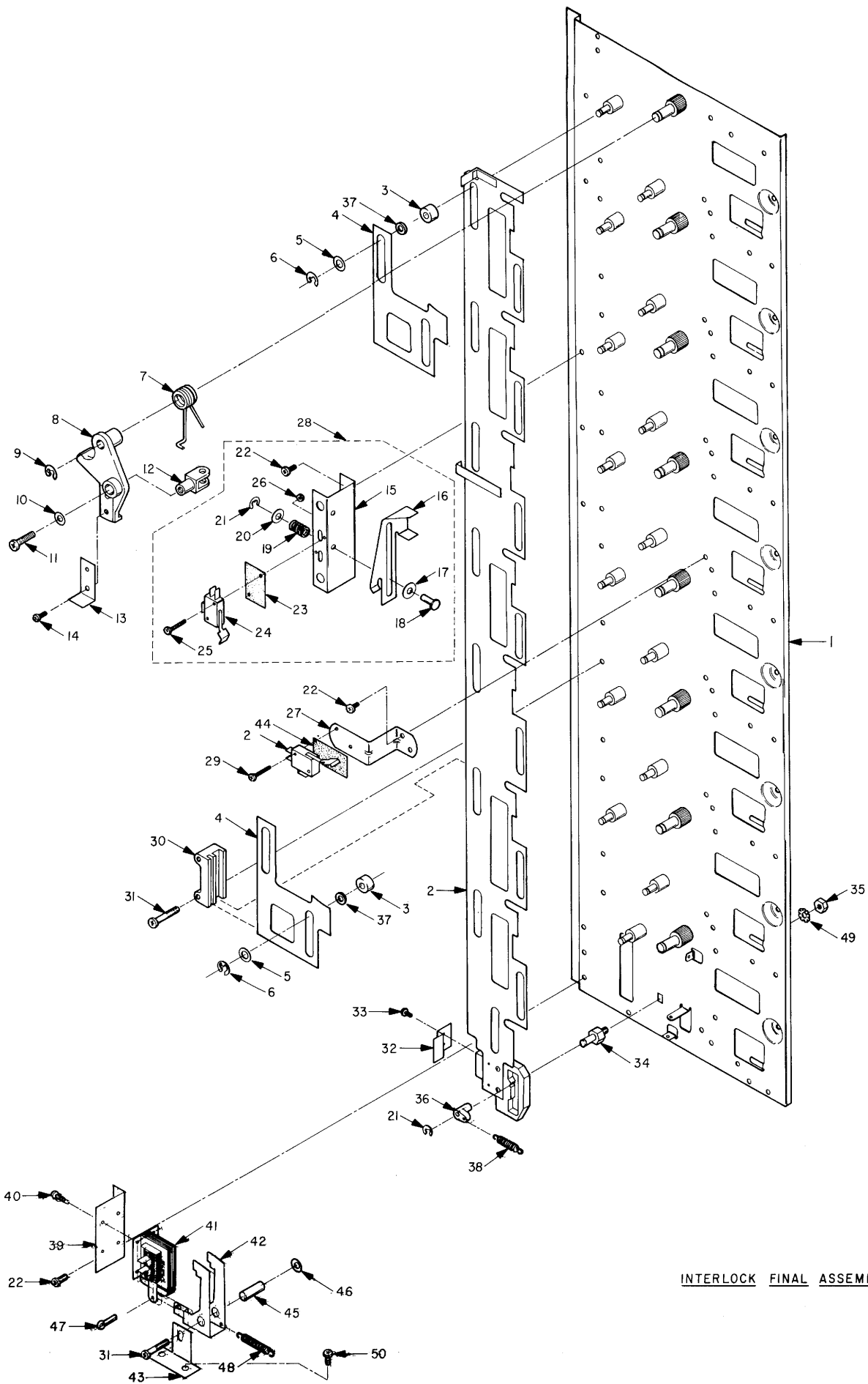
Item	Part No.	Quantity	Description
1	108150	1	Mount - Weld Assembly
2	108152	1	Bell - Crank Weld Assembly
3	V801081	1	Retainer Ring 3/8 Type "E"
4	300898	1	Bearing
5	330899	1	Roller
6	V801080	1	Retainer Ring - 5/16 Type "E"
7	337576	1	Switch
8	339259	1	Cover - Switch
9	V800032	2	#4-40 x 1 1/2 Phil Pan HD M.S.
10	339351	2	Spacer
11	V800498	2	#8-18 x 3/8 Phil Pan HD Type "B"
12	324099-4	1	Clamp-Wire
13	V801041	4	#10 External Tooth Lock Washer
14	324099-3	1	Clamp - Wire
15	V800954	2	#4-40 Hex Nut With External Tooth Lock Washer
16	111885	1	Arm Rivet Assembly
17	V801144	1	Spring Pin - 1/8 Dia x 11/16
18	116152	1	Harness - Drum Motor Assembly
19	342409-2	1	Motor
20	341942	1	Shield - Fan
21	V800763	2	#8-32 x 5/16 Phil Pan HD Type "T"
22	V800790	4	#10-32 x 1/2 Phil Pan HD Type "T"
23	345735-1	1	Plug - 4 Terminal
24	320196	4	Terminal - Male
25	336138	5	Terminal
26	489202	3	Cover - Terminal

DRUM ONLY	TRAY & DRUM ASSY	NO. REQ'D	REF.
108169-2	109066-5 (15 COMP.)	5	COLD
114646	109066-8 (10 COMP.)	3	
108169-2	109066-5 (15 COMP.)	7	COLD
113694	109066-7 (30 COMP.)	1	
108170	109066-2 (15 COMP.)	1	FROZEN
108169-2	109066-5 (15 COMP.)	2	
113693	109066-6 (20 COMP.)	2	
113694	109066-7 (30 COMP.)	3	
108170	109066-2 (15 COMP.)	1	FROZEN
108169-2	109066-5 (15 COMP.)	1	
113693	109066-6 (30 COMP.)	2	
113694	109066-7 (30 COMP.)	4	
108170	109066-2 (15 COMP.)	1	FROZEN
113694	109066-7 (30 COMP.)	7	



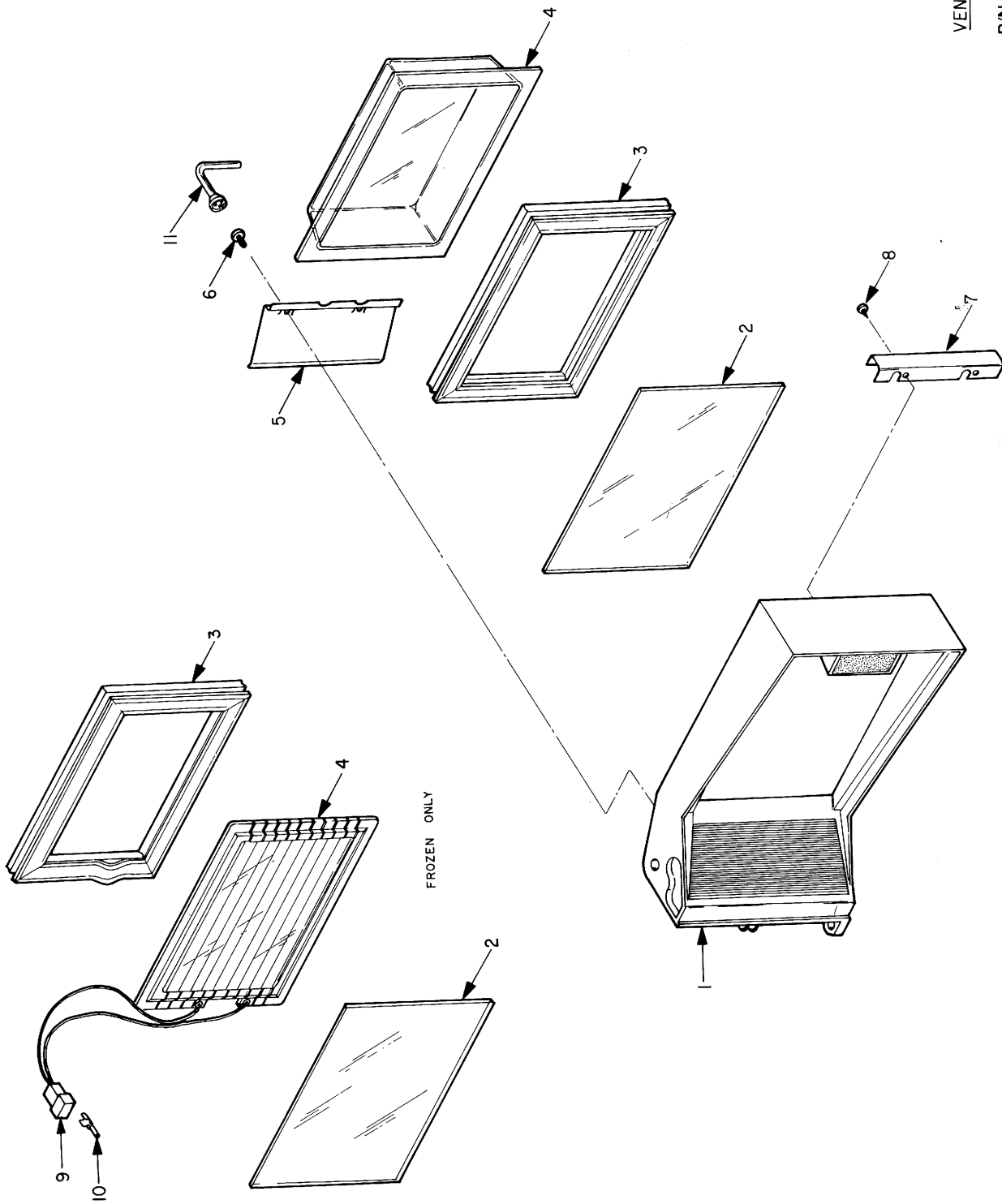
TRAY & DRUM ASSEMBLY
P/N 109066

Item	Part No.	Quantity	Description
1	333550	1	Tray Casting
2	331203	6	Roller - Drum
3	331204	6	Shaft - Roller
4	V800813	6	#6-32 x 7/16 Phil Truss HD With Plain Washer Type "T"
5	331202	6	Plastic Plug
6	333554	2	Pin
7	V801070	2	Retaining Ring - 3/16 Type "E"
8	108399	1	Detent Rivet Assembly
9	331549	1	Spring Ext - 233 Dia x 1 45/64
10	V800640	2	#10-16 x 3/8 Phil Pan HD Type "B"
11	331214	1	Roller - Detent
12	331215	1	Dog - Detent
13	V801069	1	Retaining Ring 5/32 Type "E"
14	331548	1	Spring Ext. - 277 Dia. x 61/64
15	331329	1	Cover Plate
16	V800507	2	#10-16 x 1/2 Phil RD. HD Type "B"
17	332646	1	Wear Strip
18	108632	1	Cam Weld Assembly
19	108423	1	Cam Level Weld Assembly
20	331499	1	Spring
21	335434	1	Spring
22	V801013	2	#10 Plain Washer
23	V801070	1	Retaining Ring 3/16 Type "E"
24	331195-3	5	#10-24 x 4 3/8 Hex HD Bolt (Special)
25	V800957	5	#10-24 Hex Nut With External Tooth Lock Washer
26	331194-2		Pin - 187 x 4 1/2 (As Required)
27	331193-2		Partition (1 Per Compartment)
28	332069		Hairpin - Cotter (As Required)
29	330392		Filler - Drum Slot (As Required)
30	331190	1	Bottom Disc - Drum
31	331192	1	Collar - Drum
32	331191	1	Top Disc - Drum
33	331191-1	1	Top - Disc Drum (Frozen Only)
34	331197	1	Collar - Drum (Frozen Only)
35	331198		Partition (1 Per Compartment) (Frozen Only)
36	V800541		#8-18 x 3/4 Phil Truss HD Type "AB" (1 Per Compartment) (Frozen Only)
37	331195-1		#10-24 x 2 3/16 Hex HD Bolt (Frozen Only) (Special) (1 Per Compartment)
38	332018-1	1	Pin
39	108400	1	Detent Assembly
40	320209	1	Washer - Actuator (Not Shown)

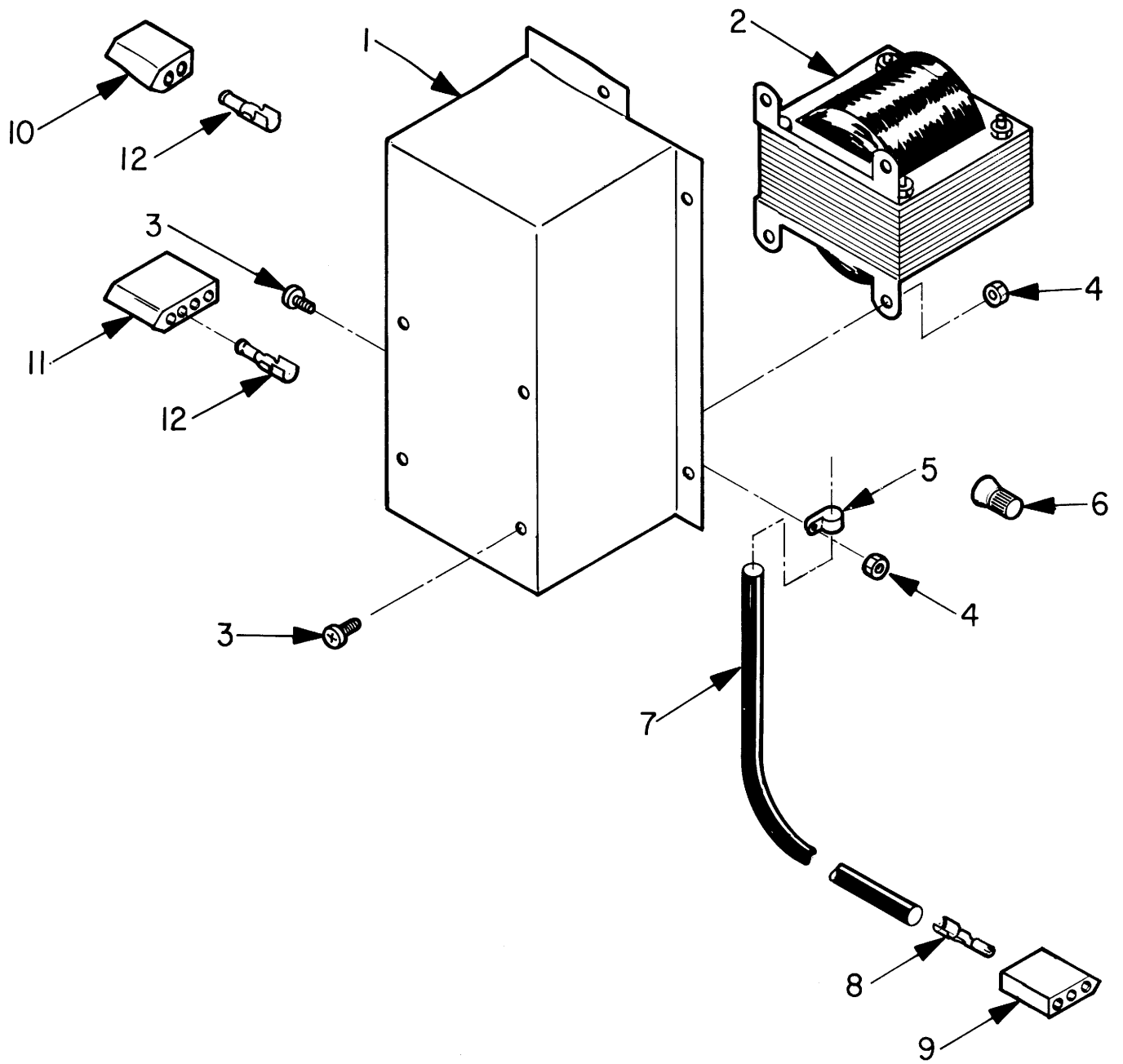


INTERLOCK FINAL ASSEMBLY

Item	Part No.	Quantity	Description
1	120225	1	Chassis Weld Assembly
2	120258	1	Lock Bar Assembly
3	331223	15	Spacer
4	330919	7	Link - Captive
5	331313	15	Washer
6	V801077	15	Retainer Ring - ¼ "Type E"
7	331299	8	Spring
8	330925	8	Lever
9	V801081	8	Retainer Ring ¾ "Type E"
10	V801016	8	¼ Plain Washer
11	V800794	8	¼-28 x 5/16 Phil Pan HD Type "T"
12	330926	8	Yoke
13	331298	8	Actuator - Price SW
14	V800762	8	#8-32 x 5/6 Phil Pan HD Type "T"
15	335296	1	Mounting Bracket
16	335295	1	Slide Bar
17	336629	2	Washer
18	331224	2	Pin
19	332639	2	Spring - Compression
20	331225	2	½ O.D. x .195 I.D. x .036 Thkx Washer
21	V801070	3	Retainer Ring 3/16 Type "E"
22	V800638	21	#10-16 x ¾ Phil Pan HD Type "B"
23	342241	1	Insulation
24	337576	9	Switch
25	V800027	2	#4-40 x ¾ Phil Pan HD M.S.
26	V800954	2	#4-40 Hex Nut With External Tooth Lock Washer
27	350672	8	Bracket Switch
28	110299	1	Master Switch Mount Assembly
29	V800745	16	#4-40 x ¾ Phil Pan HD Type "T"
30	330921	7	Guide
31	342047	8	10-24 x 1½ Phil Pan HD Tap Tite
32	334715	1	Latch Strike
33	V800762	2	#8-32 x 5/16 Phil Pan HD Type "T"
34	332349	1	Stud
35	V800888	1	¼-20 Square Nut
36	330922	1	Pawl
37	330918	15	Roller
38	334974	1	Spring
39	332264	1	Bracket
40	342047-1	14	10-24 x ¾ Phil Pan HD Tap Tite
41	46188	1	Solenoid
42	333570	1	Latch
43	334716	1	Bracket
44	3288711	8	Insulation
45	333614	1	Latch Bearing
46	V801013	1	#10 Plain Washer
47	V801106	1	½ Dia Cotter Pin Square Cut
48	331228	1	Spring
49	V801044	1	¼ External Tooth Lock Washer
50	V800535	2	#8-18 x ½ Phil Truss HD Type "AB"



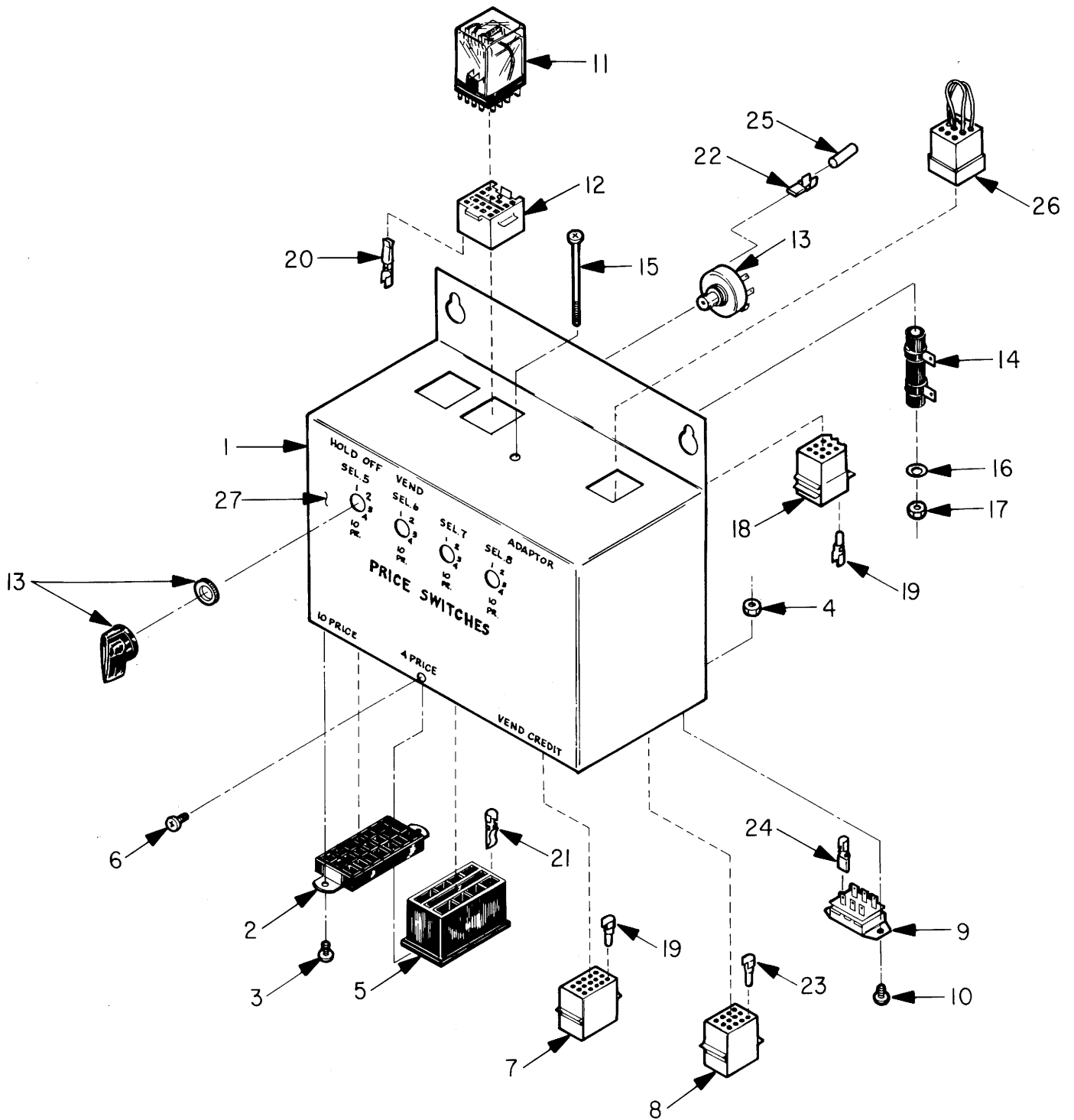
Item	Part No.	Quantity	Description
1	343387-2	1	Vend Door Casting
2	330869	1	Window - Front (Cold Only)
	330869-2	1	Window - Front (Frozen Only)
3	331281	1	Gasket-Vend Door (Cold Only)
	336772	1	Gasket-Vend Door (Frozen Only)
4	110827-1	1	Window Assembly - Short
	330870	1	Window - Rear (Cold Only)
5	339130	1	Baffle
6	339135	2	#10-32 x ½ Holt Head Type "T"
7	331305	1	U-Clamp
8	V800849	2	#6-32 x ¾ Phil Pan HD Type "T"
9	345005-1	1	Plug-2 Terminal
10	320196	1	Terminal - Male
11	338817	1	Driver-Service (In Service Packet)



TRANSFORMER COVER ASS'Y

P/N 118650

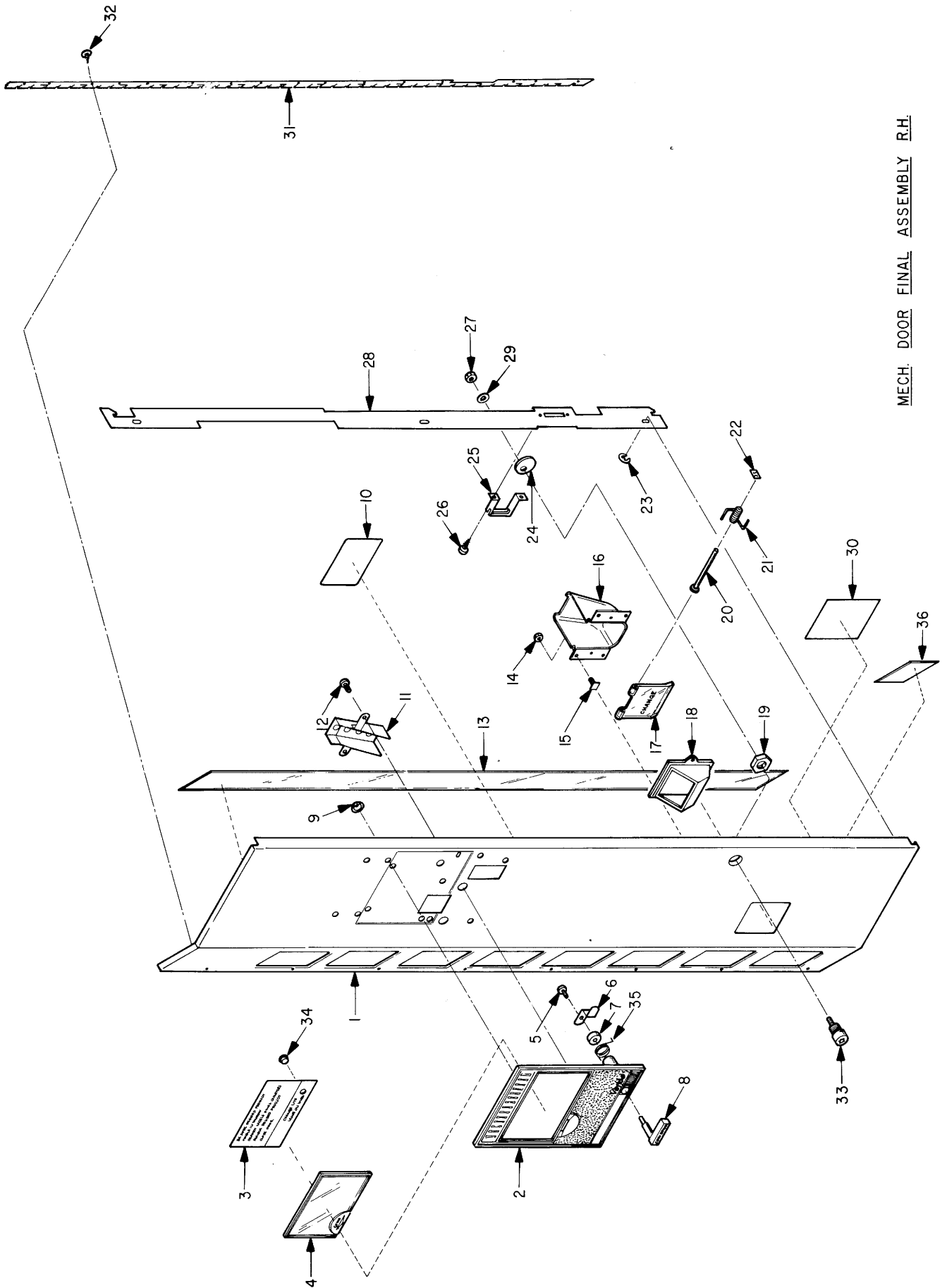
Item	Part No.	Quantity	Description
1	374120-1	1	Cover
2	374115	1	Transformer
3	V800082	5	8-32 x 3/8 Phil Pan HD M.S.
4	V800956	5	8-32 Hex Nut W/External Lock Washer
5	324099-2	1	Clamp
6	43842	1	Connector - Closed End
7	V801162	36	Plastic Tubing (Inches)
8	320196	3	Terminal - Male
9	345733-1	1	Plug - 3 Terminal
10	345008-3	1	Recep. - 2 Terminal
11	345736	1	Recep. - 4 Terminal
12	320195	6	Terminal - Female



CONTROL BOX ASS'Y

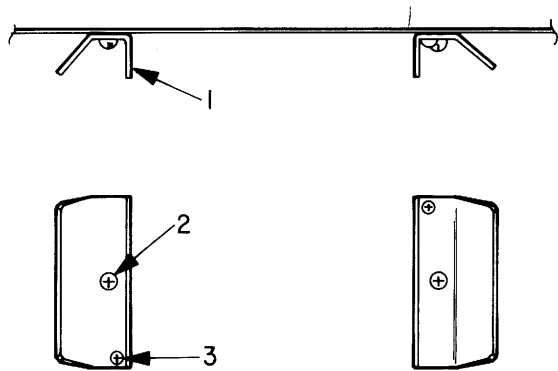
P/N 130784

Item	Part No.	Quantity	Description
1	382754	1	Control Box
2	382734	1	Socket - 18 pin
3	V800331	2	#6-32 x 3/8 Phil Pan HD With External Tooth Lock Washer M.S.
4	V800955	2	#6-32 Hex Nut With External Tooth Lock Washer
5	327254	1	Receptacle - 8 Pin
6	V800331	2	#6-32 x 3/8 Phil Pan HD With External Tooth Lock Washer M.S.
7	345007	1	Receptacle - 15 Term
8	345739	1	Plug - 12 Term
9	379424	1	Switch - Momentary
10	V800634	2	#8-18 x 1/4 Phil Pan HD Type "B"
11	361421	2	Relay
12	361833	2	Receptacle Socket - Relay
13	382697	4	Rotary SW - 5 PS
14	376550-2	1	Resistor
15	V800088	1	#8-32 x 2" Phil Pan M.S.
16	V801011	1	#8 Plain Washer
17	V800956	1	#8-32 Hex Nut With External Tooth Lock Washer
18	345004	1	Receptacle - 9 Term
19	320195	23	Terminal - Female
20	361834	11	Terminal - Female
21	327060	8	Terminal
22	612139-7	20	Terminal
23	320196	8	Terminal - Male
24	612139-2	5	Terminal
25	379438	25	Tubing Heat Shrink
26	130802	1	Jumper Assembly
27	620036	1	Label - Price Switch

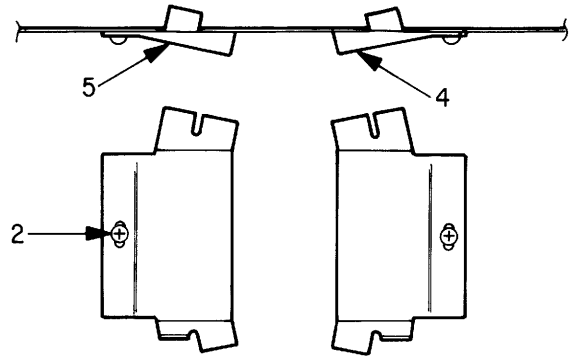


MECH. DOOR FINAL ASSEMBLY R.H.

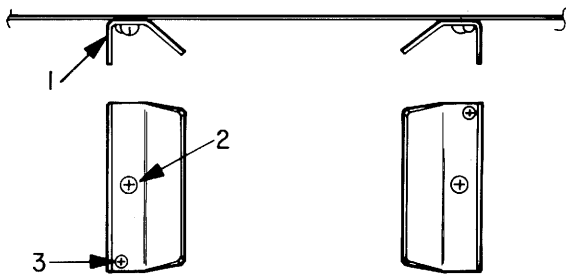
Item	Part No.	Quantity	Description
1	120293	1	Mech Door Rivet Assembly (Without Vinyl) See Page 6 thru 19 For Vinyl)
2	349896-6	1	Casting - Coin Insert
3	379305	1	Panel Instruction
	783332	1	Panel Instruction - \$1.00 Coin
4	349834	1	Window - Casting
5	42728	1	#6-32 x 1/4 Phil Washer HD Type "T"
6	380646	1	Bent Arm - Coin Release
7	320936	1	Bent Coin Release Bushing
8	349891	1	Handle - Coin Release
9	322904	6	Nut - Thread Cutting
10	326915	1	Label - Code
11	120845	1	Coin Chute Assembly
12	V800829	2	#10-24 x 3/8 Phil Truss HD With External Tooth Lock Washer Type "T"
13	361586	1	MENU Glass
14	V800952	4	#10-32 Hex Nut With External Tooth Lock Washer
15	V328761	4	#10-32 x 13/32 T-Bolt
16	349894	1	Casting - Coin Cup
17	349892-2	1	Door - Coin Cup
18	349895	1	Casting - Cup Face
19	346506	1	3/4-27 Hex Nut
20	346087-1	1	Pin
21	350388	1	Spring
22	337564	1	Push On Nut
23	V801082	3	Retainer Ring 7/16 Type "E"
24	329038	1	Lock CAM
25	365278	1	Lift Latch
26	V800763	2	#8-32 x 5/16 Phil Pan HD Type "T"
27	346122	1	Nut 9/32 x 28 Hex (Special)
28	361617	1	Latch Bar
29	346123	1	Shakeproof Washer
30	38421	1	Label - Patent Notice
31	379304	1	Card Holder RH
32	338389	9	#8-32 x 3/16 Phil Truss HD Type "C"
33	346128-0000	1	Lock Flex ACE 180
34	360516-1	1	Neon Lens
35	368437	1	Spring
36	335493	1	Shield



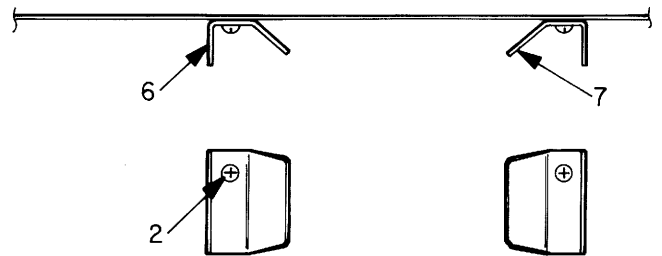
10 Compartment



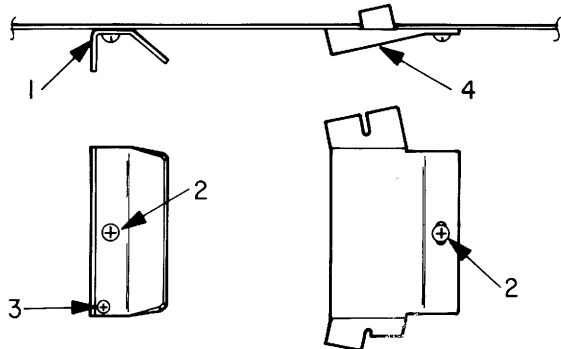
30 Compartment



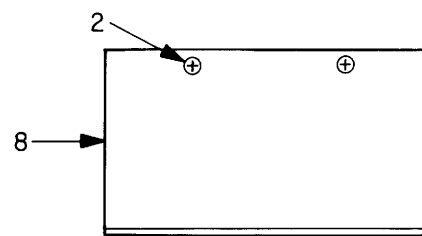
15 Compartment



15 Compartment Short

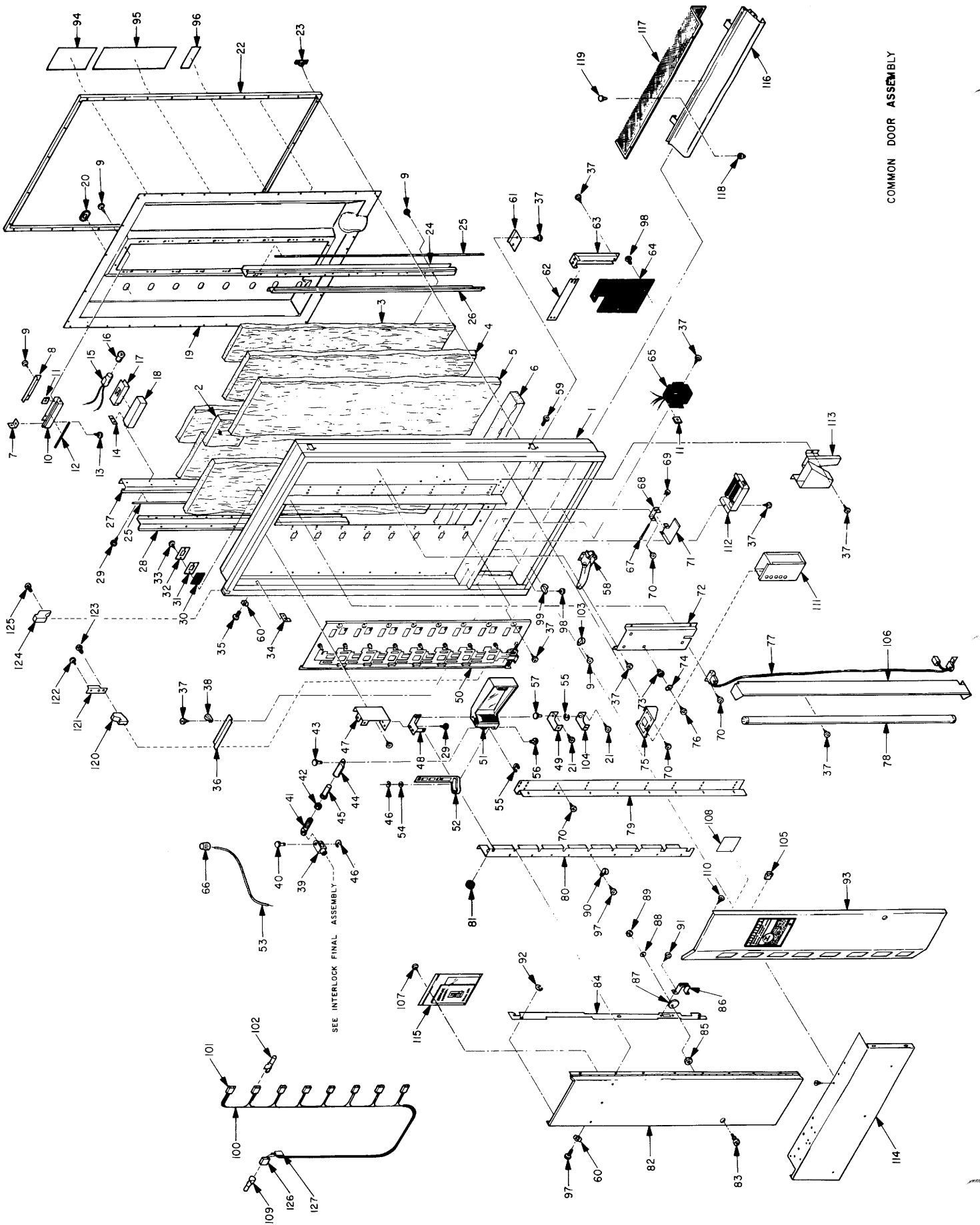


20 Compartment



Top Drum Baffle (frozen)

Item	Part No.	Quantity	Description
			10 and 15 Compartment
1	332008	2	Baffle
2	V800824	2	#8-32 x 5/8 Phil Truss HD Type "23"
3	V800475	2	#8-18 x 1/2 Phil RD HD Type "A"
			20 Compartment
1	332008	1	Baffle
2	V800824	2	#8-32 x 5/8 Phil Truss HD Type "23"
3	V800475	1	#8-18 x 1/2 Phil RD HD Type "A"
4	332015	1	Baffle
			30 Compartment
2	V800824	2	#8-32 x 5/8 Phil Truss HD Type "23"
4	332015	1	Baffle
5	332015-1	1	Baffle
			15 Compartment Short
2	V800824	2	#8-32 x 5/8 Phil Truss HD Type "23"
6	332471	1	Baffle
7	332491	1	Baffle
			Top Drum (Frozen)
2	V800824	2	#8-32 x 5/8 Phil Truss HD Type "23"
8	365010	1	Baffle



COMMON DOOR ASSEMBLY

Item	Part No.	Quantity	Description	Item	Part No.	Quantity	Description
1	120219	1	Door Weld Assembly	54	331313	8	Washer
2	331555	2	Insulation Door (Cold Only)	55	V801080	15	Retainer Ring 5/16 Type "E"
2	337281-5	2	Insulation - Door (Frozen Only)	56	331300	8	Pin
3	361610	2	Insulation Door (Cold Only)	57	331301	7	Pin - Hinge
4	361609	2	Insulation Door (Cold Only)	58	320950	2	Latch Door
5	361611	2	Insulation Door (Cold Only)	59	V800833	8	#10-32 x 1/2 Phil Truss HD With External Tooth Lock Washer Type "T"
6	337281-7	2	Insulation Door (Frozen Only)	60	321289	As Req'd	Lock Washer, .875 O.D. x .226 I.D.
7	331551	1	Insulation Door (Cold Only)	61	341271	2	Wear Plate Door Lift
8	337281	1	Insulation Door (Frozen Only)	62	361680	1	Strike Plate
9	330405	4	Speed Nut	63	361678	1	Strike Plate Timer
10	330401	2	Clamp Eyelet	64	365800	1	Shroud
11	V800509	As Req'd	#10-16 x 3/8 Phil Pan HD Type "B"	65	109078-2	1	Transformer Assembly
12	330403	2	Eyelet End	66	43842	8	Wire Nut (Frozen Only)
13	331266	2	Clip - Tinnerman	67	365162	1	Hinge - Scavenger Brkt.
14	331677-1	2	Gasket Eyelet	68	380647	1	Flat Retaining Brkt.
15	V800533	8	#8-18 x 3/8 Phil Truss HD Type "AB"	69	346822	1	Compression Clip
16	330406	16	Speed Nut	70	V800548	As Req'd	#10-16 x 1/2 Phil Truss HD Type "AB"
17	330398	8	Light Socket	71	370740	1	Scavenger Brkt.
18	338046	8	LAMP	72	333558	1	Support Brkt. Coin Mechanism
19	334878	8	Lamp Bracket Shield	73	323005	3	Plastic Grommet
20	330414	8	Eyelet Crossbar	74	370729	3	Lock Washer
21	361457	1	Door Liner	75	333559	1	Support Brkt. Coin Box
22	331500	8	Plug	76	V800084	3	#8-32 x 3/8 Phil Pan HD M.S.
23	342047-1	14	#10-24 x 3/8 Phil Pan HD Taprite	77	122001	1	Harness - Menu Light
24	361416	1	Gasket - Cabinet Door	78	345956	1	Lamp Fluorescent
25	329409	33	Clip	79	361574	1	Hinge Mount
26	361604	1	Eyelet - RH	80	361591	1	Baffle
27	361677-4	2	Gasket	81	332531	8	Grommet - Strain Relief
28	120295-1	1	Clamp Weld Assembly	82	120247	1	Mech. Door Assembly L.H. (Without Vinyl)
29	120295-3	1	Clamp Weld Assembly	83	346128	1	Lock Flex ACE 180
30	V800636	As Req'd	#8-18 x 1/2 Phil Pan HD Type "B"	84	361617	1	Latch Bar
31	337442	8	Sleeve - Push Rod (Frozen Only)	85	346506	1	Nut 3/4--27 Hex
32	331383	8	Gasket	86	365278	1	Lift Latch
33	331384	8	Gasket Retainer	87	329038	1	Lock CAM
34	V800745	16	#4-40 x 3/8 Phil Pan HD Type "T"	88	346123	1	Washer - Shakeproof
35	345814	4	Strike - Latch	89	346122	1	Nut 3/8--28 Hex (Special)
36	V800664	8	#10-24 x 3/8 Phil Pan HD Type "D"	90	324099-2	8	Clamp
37	332659	1	Guide	91	V800763	2	#8-32 x 3/8 Phil Pan HD Type "T"
38	V800479	As Req'd	#10-16 x 3/8 Phil Pan HD Type "AB"	92	V801082	3	Retainer Ring 7/16 Type "E"
39	324099-9	1	Clamp - 3/4"	93	120853	1	Mech Door Final Assembly RH (See Page 52)
40	330926	8	Yoke	94	349233	1	Label - Instruction
41	331226	8	Pin	95	354573	1	Label - Drum Instruction
42	334704	8	Rod End	96	363221	1	Label Screen Removal
43	V800912	8	1/4-28 Hex Nut Style 2	97	V800841	17	#10-32 x 1/2 Phil Hex HD Type "T"
44	334706	8	Sleeve - Vend Door	98	V800498	4	#8-18 x 3/8 Phil Pan HD Type "T"
45	334705	8	Linkage - Vend Door	99	324099-4	1	Clamp
46	V801077	16	Retainer Ring 1/4 Type "E"	100	120817	1	Heater Harness Assembly
47	361413	1	Bracket	101	345008-1	8	Receptical - 2 Terminal
48	108662	1	Bracket Weld Assembly	102	320195	16	Terminal - Female
49	330913	7	Bracket - Hinge	103	324089-3	As Req'd	Clamp
50	120260-4	1	Interlock Final Assembly (See Page 44)	104	108416	1	Bracket Weld Assembly
51	111907-5	8	Vend Door Assembly (Frozen Only) (See Page 46)	105	331854	3	Clip Tinnerman
52	111908-7	8	Vend Door Assembly (Cold Only) (See Page 46)	106	365401	1	Light Stop
53	331196	8	Push Rod	107	338389	1	#8-32 x 3/8 Phil Truss HD Type "C"
	340911	6	Wire (Frozen Only)	108	326915	1	Label - Code
				109	320196	1	Terminal Male

Item	Part No.	Quantity	Description	Item	Part No.	Quantity	Description
110	V800723	7	1/4-20 x 1/2 Phil Hex HD Type "D" Stainless Steel	121	374421	1	Back Plate - Hinge
111	120301	1	Coin Box Weld Assembly	122	V342624	2	#10-32 x 1/2 Phil Pan HD Self Drilling Screw
112	129022	1	Ballast & Breaker Assembly (See Page 36)	123	V800406	2	#10-32 x 1/2 Phil Truss HD With External Lock Washer M.S.
113	129308	1	Chute Weld Assembly	124	324522-12	1	Hinge Pin Cover
114	120815-6	1	Kick Panel Weld Assembly (Without Vinyl)	125	348795	2	1/4-20 x 1/2 Phil Truss HD Type "T"
115	128550-7	1	Schematic and Wiring Dia. Inst.	126	345005-3	1	Plug - 2 Terminal
116	120004-6	1	Air Vent Assembly	127	339255	1	Tag - Warning
117	361657	1	Screen	128	130758	1	Door Harness Assembly (Not Shown See Page 38)
118	334551-1	3	Fastner				
119	334596-3	3	Fastner				
120	374422-2	1	Casting - Lower Hinge				

