



FUTURA COMBO VENDOR

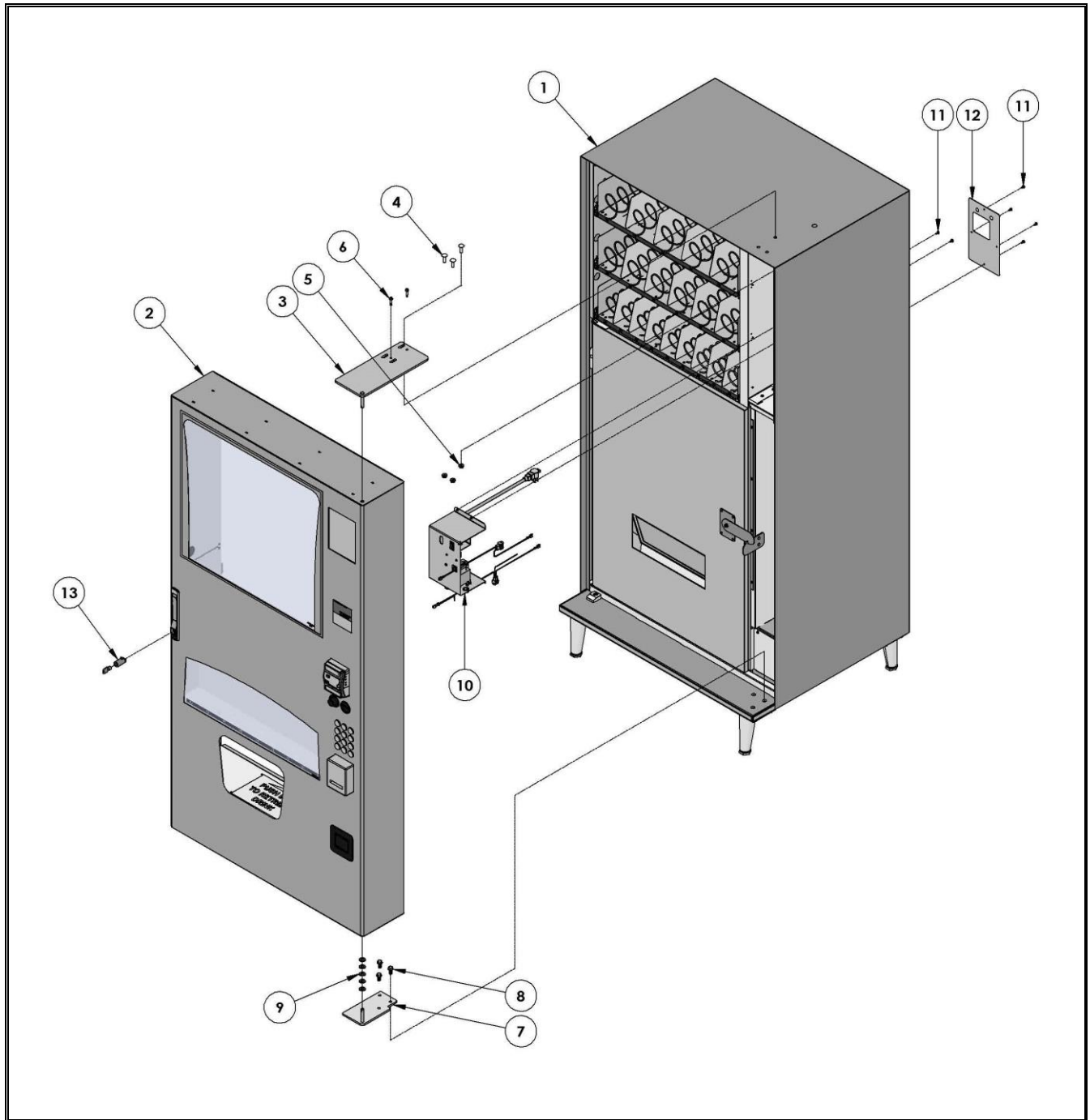


MODEL 3589 PARTS MANUAL

TABLE OF CONTENTS

FINAL ASSEMBLY	1
<i>FINAL ASSEMBLY PARTS LIST</i>	<i>2</i>
CABINET ASSEMBLY.....	3
<i>CABINET ASSEMBLY PARTS LIST</i>	<i>5</i>
CABINET SUB – ASSEMBLY.....	7
<i>CABINET SUB - ASSEMBLY PARTS LIST.....</i>	<i>7</i>
DOOR ASSEMBLY.....	8
<i>DOOR ASSEMBLY PARTS LIST</i>	<i>9</i>
POWER BOX ASSEMBLY	11
<i>POWER BOX ASSEMBLY PARTS LIST.....</i>	<i>12</i>
SNACK TRAY ASSEMBLY – 5 SELECT	13
<i>SNACK TRAY ASSEMBLY- 5 SELECT PARTS LIST.....</i>	<i>13</i>
SNACK TRAY ASSEMBLY – 6 SELECT.....	14
<i>SNACK TRAY ASSEMBLY- 6 SELECT PARTS LIST.....</i>	<i>14</i>
SNACK TRAY ASSEMBLY – 9 SELECT	15
<i>SNACK TRAY ASSEMBLY- 9 SELECT PARTS LIST.....</i>	<i>15</i>
CAN/BOTTLE TRAY ASSEMBLY – SELECTION 40.....	16
<i>CAN/BOTTLE TRAY ASSEMBLY- SELECTION 40 PARTS LIST.....</i>	<i>16</i>
CAN/BOTTLE TRAY ASSEMBLY – SELECTION 50.....	17
<i>CAN/BOTTLE TRAY ASSEMBLY- SELECTION 50 PARTS LIST.....</i>	<i>17</i>
HCCT TRAY ASSEMBLY – SELECTION 60	18
<i>HCCT TRAY ASSEMBLY- SELECTION 60 PARTS LIST</i>	<i>19</i>
INNER DOOR ASSEMBLY.....	20
<i>INNER DOOR ASSEMBLY PARTS LIST</i>	<i>21</i>
DELIVERY DOOR ASSEMBLY.....	22
<i>DELIVERY DOOR ASSEMBLY PARTS LIST.....</i>	<i>22</i>
LED ASSEMBLY - TOP.....	23
<i>LED ASSEMBLY - TOP PARTS LIST</i>	<i>23</i>
LED ASSEMBLY - DISPLAY	24
<i>LED ASSEMBLY - DISPLAY PARTS LIST</i>	<i>24</i>

FINAL ASSEMBLY



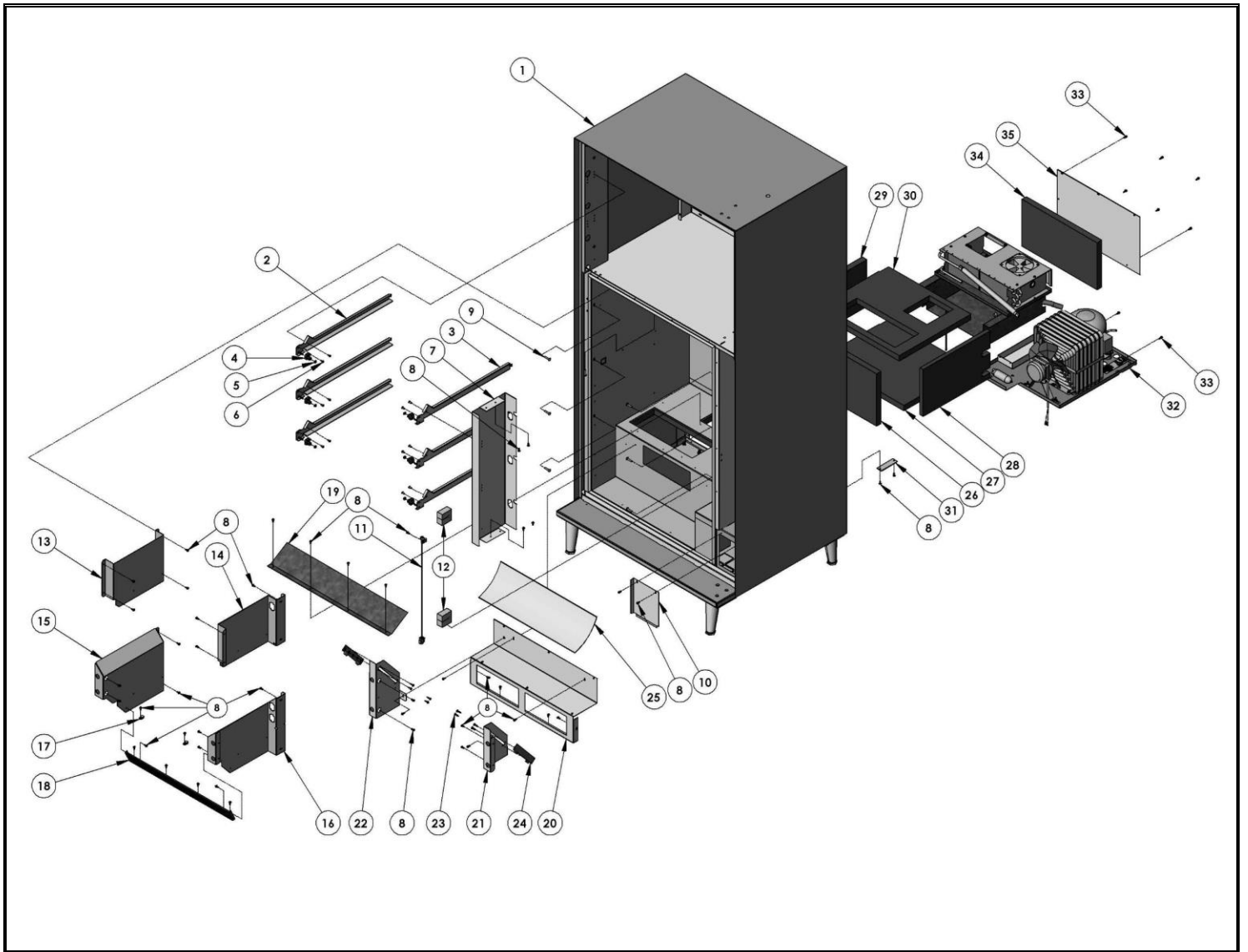
FINAL ASSEMBLY PARTS LIST

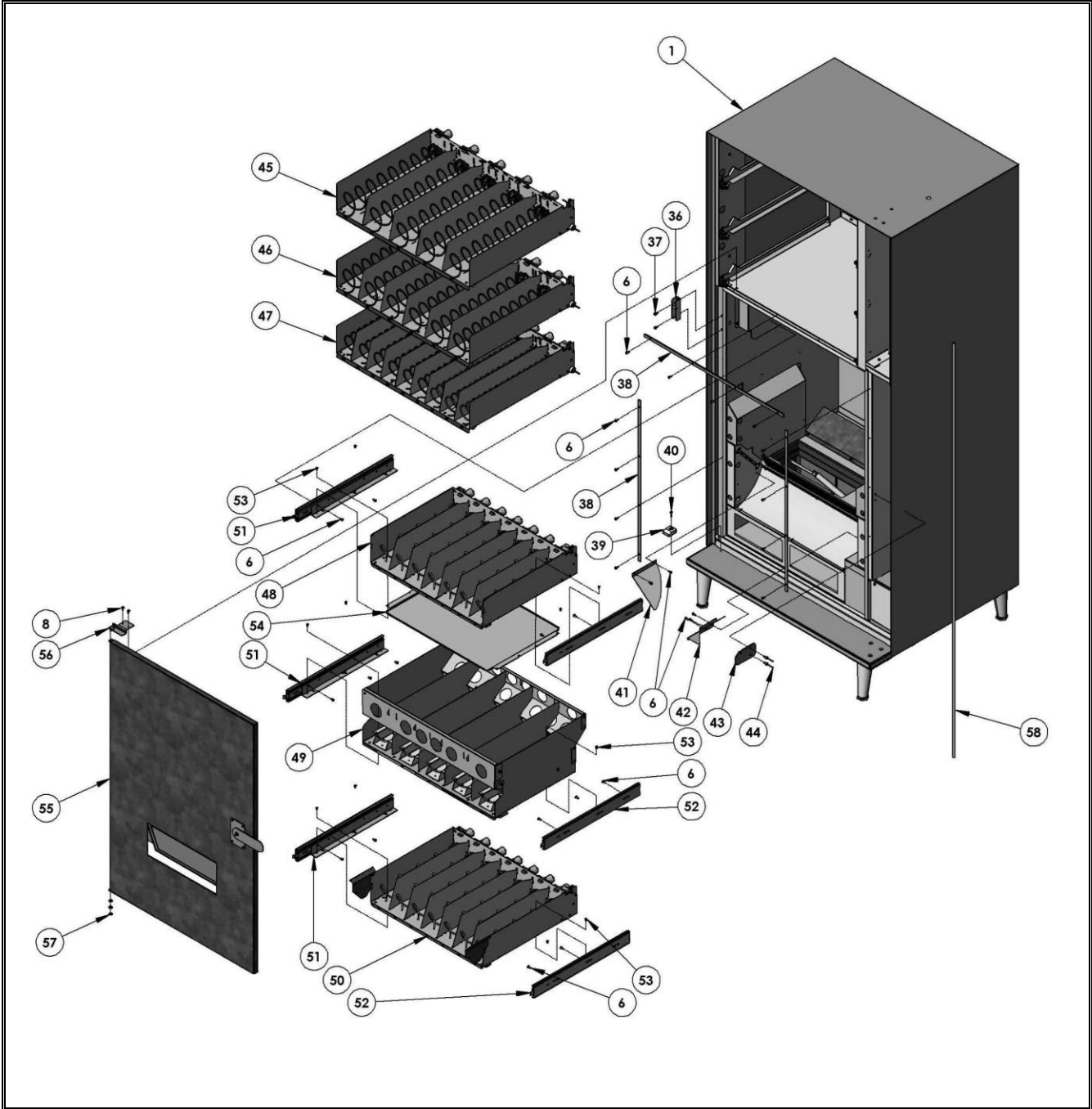
ITEM NO.	PART NUMBER	COMBO VENDOR	DESCRIPTION
1	(SEE PAGE # 3)	1	CABINET ASSEMBLY
2	(SEE PAGE # 8)	1	DOOR ASSEMBLY
3	1221065.000330	1	TOP HINGE ASSEMBLY
4	8810013	3	5/16-18 X 1 CARR. BOLT
5	8810015	3	5/16-18 FLANGE LOCK NUT
6	4215175	2	#12-18 X 1 HWH TEK SCREW
7	1218799.000330	1	BOTTOM HINGE ASSEMBLY
8	8801388	3	5/16-18 X 3/4 HWH TYPE 23 BOLT
9	4050767	AR	3/8 FLAT WASHER-NYLON BLACK
10	1221103	1	POWER BOX ASSEMBLY (SEE PAGE # 11)
11	4221692	6	#8 TRUSS HEAD SEMS TYPE 23
12	4226709.000330	1	POWER BOX COVER
13	4060330	1	LOCK CYL W/2 KEYS
LIST OF PARTS NOT SHOWN			
14	4226049.12	AR	PRODUCT PUSHER/12 PACK
15	4050585	AR	#8 EXT TOOTH LOCKWSHR
ANTI-CHEAT KIT FOR DELIVERY DOOR (OPTIONAL – FIELD INSTALL KIT)			
16	1216062.242	1	DELIVERY DOOR ANTI-CHEAT KIT
† 3 PIECE SILVER DOOR DECALS			
17	4223606	1	SILVER HEADER STYLING DECAL
18	4223607.001	1	SILVER MIDDLE STYLING DECAL
19	4223608	1	SILVER BOTTOM STYLING DECAL
† 3 PIECE GATORADE DOOR DECALS			
20	4223432.085	1	GATORADE HEADER DECAL
21	4223432.086	1	GATORADE MIDDLE DECAL
22	4223432.087	1	GATORADE BOTTOM DECAL

AR – AS REQUIRED

† - NOT ALL VARIANT DOOR DECALS ARE LISTED HERE. PLEASE EMAIL Parts@wittern.com FOR UNLISTED DOOR DECAL PART NUMBERS.

CABINET ASSEMBLY





CABINET ASSEMBLY PARTS LIST

ITEM NO.	PART NUMBER	CABINET ASSEMBLY	DESCRIPTION
1	(SEE PAGE # 7)	1	CABINET SUB-ASSEMBLY
2	4217737.003330	3	TRAY RAIL W/STUDS - LEFT
3	4217737.002330	3	TRAY RAIL W/STUDS - RIGHT
4	4227340	6	RAIL GUIDE
5	8800956	6	#8-32 HEX NUT W/ETW
6	4050239.001	44	#8-32X3/8 PHL PH TYPE 23 SCREW
7	4227403.000330	1	RIGHT CABINET PARTITION
8	4223541	52	#8-32 X 3/8 HWH TYPE 23 SCREW
9	7200468.001	7	#10-12X1 PHIL TH TYPE A SCREW
10	4227293.000330	1	FAN HOUSING COVER
11	4214684	1	TEMP. SENSOR
12	4223341	2	HARNESS INSULATION BLOCK
13	4223034	1	UP LEFT-SIDE PANEL
14	4223035	1	UP RIGHT-SIDE PANEL
15	4223023	1	LEFT-SIDE PANEL
16	4223026	1	RIGHT-SIDE PANEL
17	8324099.2	3	P-CLAMP 1/4
18	4226427.000330	1	EVAP SCREEN FRAME
19	4226111	1	AIR DEFLECTOR
20	4227335.000330	1	FALSE DELIVERY BOX
21	4223025.000330	1	RIGHT I-VEND PANEL
22	4223022.000330	1	LEFT I-VEND PANEL
23	4211310.375	8	STANDOFF
24	** IVENDS – PLEASE SEE TABLE BELOW FOR PART NUMBER		
25	4223031	1	DEFLECTOR DELIVERY FLOOR
26	4227316	1	INSULATION - EVAP FRONT
27	4227320	1	INSULATION - EVAP BOTTOM
28	4217798.012	1	INSULATION - EVAP SIDE
29	4227443	1	INSULATION - EVAP SIDE
30	4227319	1	INSULATION - EVAP TOP
31	4221994	1	HOLE BLOCKER
32	1218837.501	1	REFRIGERATION ASSEMBLY
33	4223922	8	#8-15 X 1/2 HWH TYPE A SCREW
34	4227324	1	INSULATION - EVAP BACK
35	4227298.000330	1	EVAPORATOR BACK COVER
36	1219189	1	LATCH MOUNT ASSEMBLY
37	4223542	2	#10-32 X 3/8 HWH TYPE 23 SCREW
38	4223687.000330	3	GASKET RETAINER
39	4025610.001	1	DOOR GLIDE - 1/2" TALL
40	4212505	1	#8-3/4 PHIL PH TEK SCREW
41	4228877	1	PRODUCT DEFLECTOR - LEFT CORNER
42	4223033	1	PRODUCT DEFLECTOR - RIGHT
43	4227185.000330	1	INNER DOOR LATCH
44	4220124	2	RIVET 3/16

ITEM NO.	PART NUMBER	CABINET ASSEMBLY	DESCRIPTION
45	(SEE PAGE # 13)	1	TRAY ASSEMBLY – 5 SELECT (SELECTION 10'S)
46	(SEE PAGE # 14)	1	TRAY ASSEMBLY – 6 SELECT (SELECTION 20'S)
47	(SEE PAGE # 15)	1	TRAY ASSEMBLY – 9 SELECT (SELECTION 30'S)
48	(SEE PAGE # 16)	1	TRAY ASSEMBLY – CAN/BOTTLE (SELECTION 40'S)
49	(SEE PAGE # 18)	1	HCCT TRAY ASSEMBLY (SELECTION 60'S)
50	(SEE PAGE # 17)	1	TRAY ASSEMBLY – CAN/BOTTLE (SELECTION 50'S)
51	4216381	3	ROLLER SLIDE - LEFT
52	4216381.001	3	ROLLER SLIDE - RIGHT
53	8800763	12	#8-32X5/16 PHIL PH TYPE 23 SCREW
54	4227303	1	CAN/BOTTLE TRAY BARRIER
55	1221058	1	INNER DOOR ASSEMBLY (SEE PAGE # 20)
56	1221004.000330	1	INNER DOOR HINGE - UPPER
57	4203029	AR	WASHER-INNER DOOR
58	4221985	AR (FEET)	D GASKET
LIST OF PARTS NOT SHOWN			
59	4219270.089	1	TRAY RELEASE DECALS
60	4050585	AR	#8 EXT TOOTH LOCKWSHR
61	4033712	AR	CABLE TIE
62	8361468	1	SPRING - MAIN HARNESS RETRACTION
63	** MAIN HARNESS - PLEASE SEE TABLE BELOW FOR PART NUMBER		

AR – AS REQUIRED

**** IVEND COLORS – RED & BLUE – PLEASE DO NOT MIX & MATCH THE IVEND COLORS BETWEEN THE SNACK IVEND IN DOOR ASSEMBLY AND DRINKS IVEND IN CABINET ASSEMBLY, SHOULD ALWAYS USE THE SAME COLOR IVENDS. ALSO, MAIN HARNESS PART NUMBERS ARE DIFFERENT FOR RED & BLUE COLOR IVENDS.**

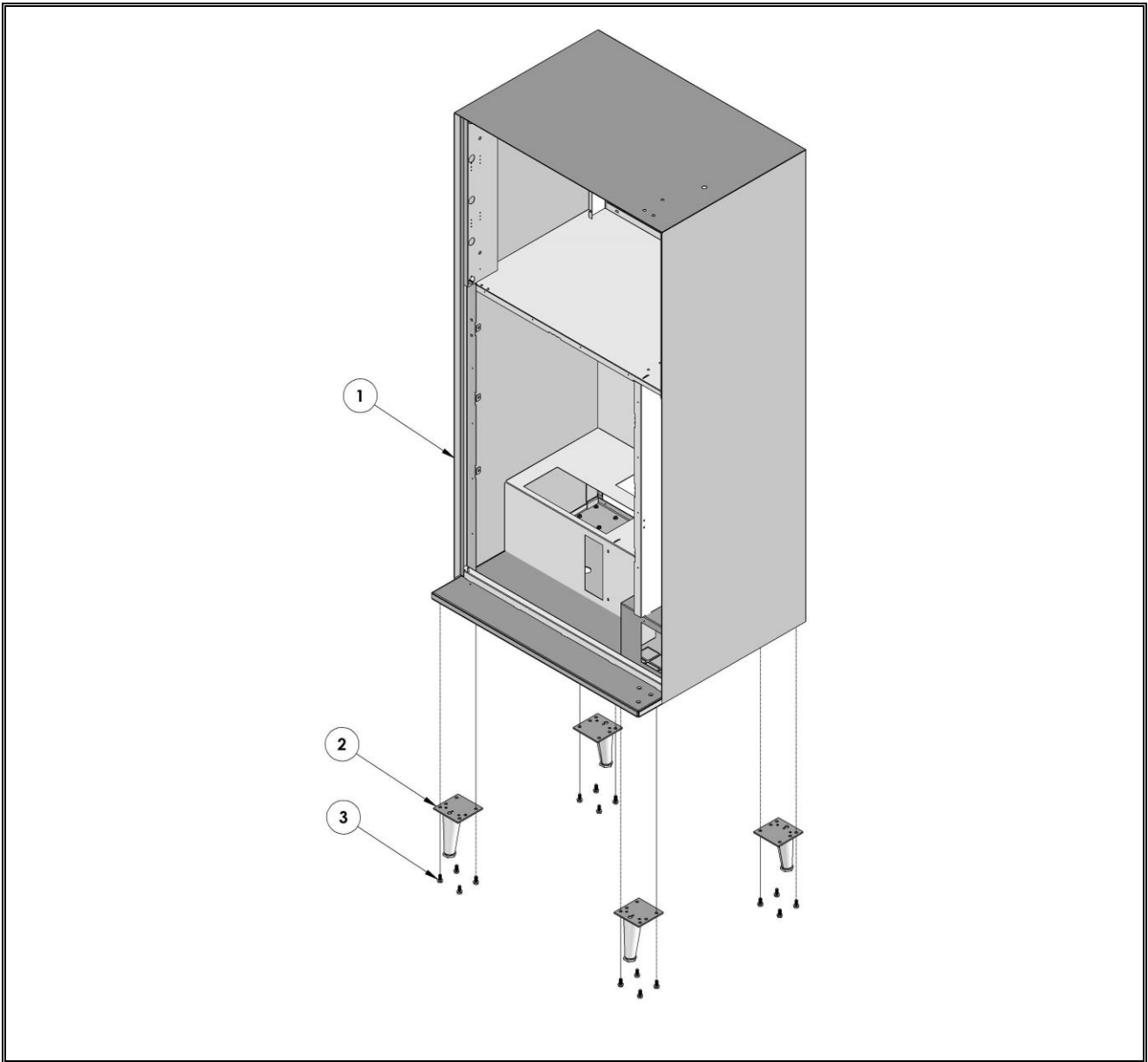
RED COLOR

IVEND PART NUMBER		
4212464.021	1	IVEND SENSOR
MAIN HARNESS PART NUMBER		
4227520	1	MAIN HARNESS

BLUE COLOR

IVEND PART NUMBER		
4229031	1	IVEND 5 DETECTOR BOARD
4229032	1	IVEND 5 EMITTER BOARD
4225217	1	IVEND 5/10 BOARD CONNECTION HARNESS
4228980	1	IVEND 5/10 ADAPTOR HARNESS
MAIN HARNESS PART NUMBER		
4228981	1	MAIN HARNESS - IVEND 5/10

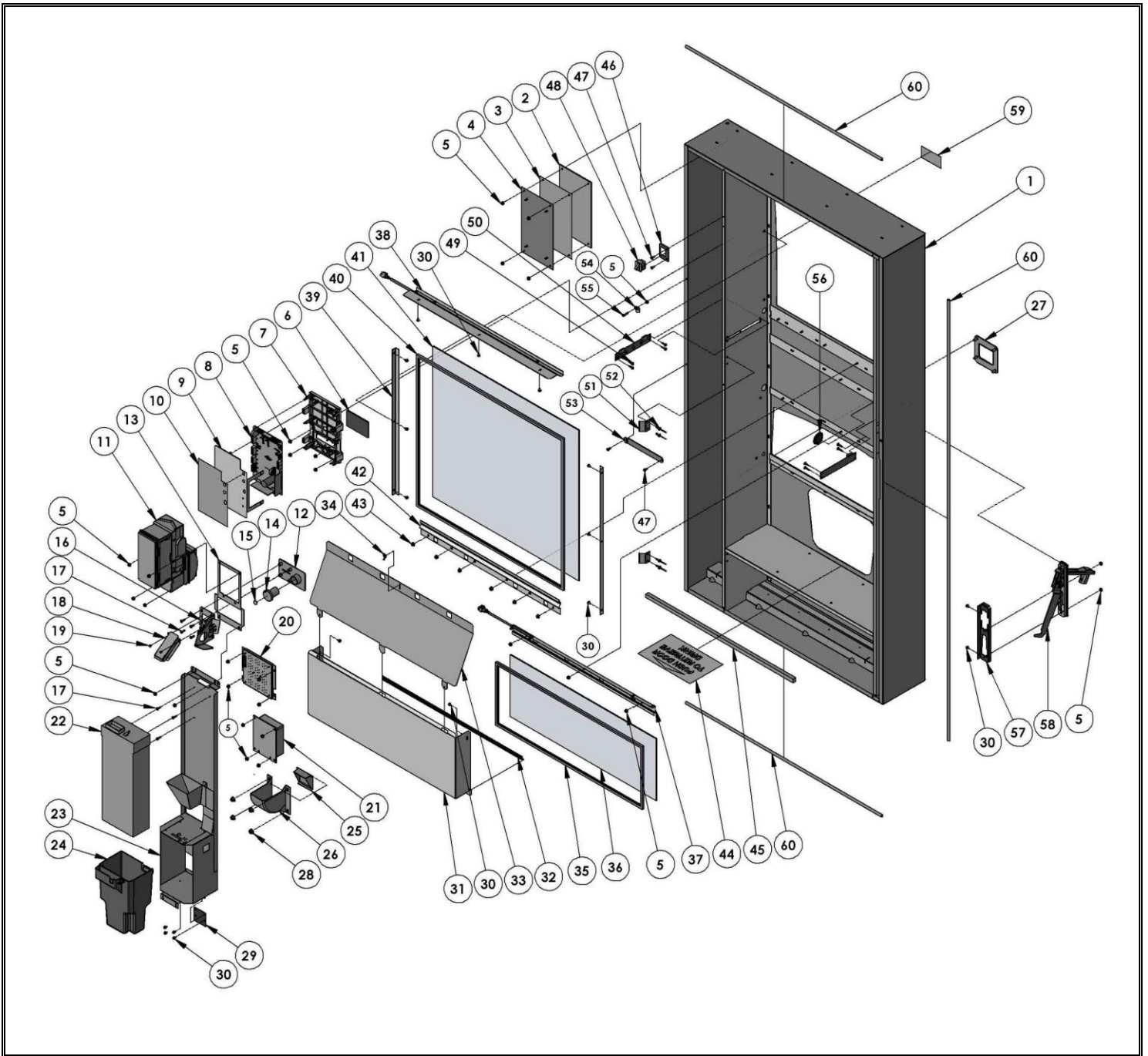
CABINET SUB – ASSEMBLY



CABINET SUB - ASSEMBLY PARTS LIST

ITEM NO.	PART NUMBER	CAB SUB-ASSY	DESCRIPTION
1	1221044	1	CABINET WELD
2	1214704.001	4	LEG ASSEMBLY (6")
3	8801388	16	5/16-18X3/4 HWH TYPE 23 BOLT

DOOR ASSEMBLY



DOOR ASSEMBLY PARTS LIST

ITEM NO.	PART NUMBER	DOOR ASSEMBLY	DESCRIPTION
1	1221057.000330	1	DOOR WELD
2	4223065	1	ACRYLIC POP WINDOW
3	† 4223066.001	1	POP PRINT (STANDARD)
	† 4223066.003		POP PRINT (GATORADE)
4	4223062.001330	1	POP DISPLAY BACK
5	8800956	28	#8-32 HEX NUT W/ETW
6	4202841.017	1	READOUT WINDOW/BLUE/ENGLISH
7	4222728	1	CONTROL BOARD MOUNT
8	4213952.005	1	GVC1 PRIME CONTROL BOARD
9	4222729.000330	1	CONTROL BOARD COVER
10	4216031.004	1	SERVICE MODEL LABEL
11	BILL VALIDATOR - PLEASE EMAIL Parts@wittern.com FOR PART NUMBER		
12	4203186.004	1	COIN INSERT BLK
13	4210954.000330	1	INSERT MOUNT/BLK
14	4203187	1	COIN RETURN BUTTON/BLK
15	4209188	1	SNAP PIN
16	1217987	1	COIN RETURN LEVER MECHANISM
17	8800636	7	#8-18X1/2 PHIL PH TYPE B SCREW
18	1217787.000950	1	COIN CHUTE
19	4201942	2	#6-20X3/16 PHL PH TYPE B SCREW
20	1216670.002	1	KEYPAD ASSEMBLY W/O LED
21	CARD READER - PLEASE EMAIL Parts@wittern.com FOR PART NUMBER		
22	COIN MECH - PLEASE EMAIL Parts@wittern.com FOR PART NUMBER		
23	1216638.000330	1	COIN MECH MOUNT/BLK
24	4216287	1	COIN BOX
25	4203208	1	COIN CUP DOOR/BLK
26	4203207	1	COIN CUP/BLACK
27	4203209	1	COIN CUP BEZEL/BLK
28	4050747	4	1/4 STAMPED HEX NUT
29	4218096	1	COIN MECH MOUNT BRACKET
30	4050420.001	18	#8-18X1/4 PHIL HWH/BLK SCREW
31	4227092.000330	1	DISPLAY SHELF
32	4223067	1	BEVERAGE SELECTION LABEL
33	4223492.000330	1	DISPLAY COVER
34	4050514	1	#8-32 WING NUT
35	4202039.016	1	WINDOW GASKET
36	4217810.001	1	LIVE DISPLAY WINDOW
37	1221177	1	LED ASSEMBLY – DISPLAY (SEE PAGE # 24)
38	1221055	1	TOP LED ASSEMBLY (SEE PAGE # 23)
39	4223060.000330	2	SIDE WINDOW RETAINER
40	4202039.015	1	WINDOW GASKET
41	4217808.002	1	WINDOW
42	4223061.000330	1	BOTTOM WINDOW RETAINER
43	4220913	6	#8-32 HEX FLANGE NUT
44	4218264	1	DELIVERY PORT DECAL

ITEM NO.	PART NUMBER	DOOR ASSEMBLY	DESCRIPTION
45	4224775	1	FOAM TAPE
46	4227832	1	DOOR SWITCH MOUNT
47	4050239.001	4	#8-32X3/8 PHL PH TYPE 23 SCREW
48	4212621	1	SWITCH
49	4211310.375	8	STANDOFF
50	** IVENDS – PLEASE SEE TABLE BELOW FOR PART NUMBER		
51	4227192	2	SPRING DOOR CLOSER
52	4220124	4	RIVET 3/16
53	4227461.000330	1	DOOR SIDE STIFFENER
54	8324099.4	1	P CLAMP - 3/8
55	4050262	1	#8-32X3/4 PHIL PH M/C SCREW
56	7250135.010	1	HOLE PLUG 1-1/4
57	4218253.001	1	HANDLE BRACE W/STUDS
58	4227241	1	DOOR HANDLE ASSY
59	4218265	1	SELECTION INSTRUCTIONS
60	4221985	AR (FEET)	D GASKET
LIST OF PARTS NOT SHOWN			
61	4216099.002	1	KEYPAD CABLE
62	4216308	1	DOOR SWITCH HARNESS
63	4223123	1	LED LIGHT HARNESS
64	4217573	1	PERIPHERAL FILLER (OPTIONAL)
65	4214278	1	DEX HARNESS (OPTIONAL)
66	4227268	1	DEX & 3.5MM JACK MOUNT (OPTIONAL)
67	** VEND SENSOR JUMPER HARNESS - PLEASE SEE TABLE BELOW FOR PART NUMBER		

AR – AS REQUIRED

† - NOT ALL VARIANT POP PRINTS ARE LISTED HERE. PLEASE EMAIL Parts@wittern.com FOR UNLISTED POP PRINT PART NUMBERS.

**** IVEND COLORS – RED & BLUE – PLEASE DO NOT MIX & MATCH THE IVEND COLORS BETWEEN THE SNACK IVEND IN DOOR ASSEMBLY AND DRINKS IVEND IN CABINET ASSEMBLY, SHOULD ALWAYS USE THE SAME COLOR IVENDS. ALSO, VEND SENSOR JUMPER HARNESS PART NUMBERS ARE DIFFERENT FOR RED & BLUE COLOR IVENDS.**

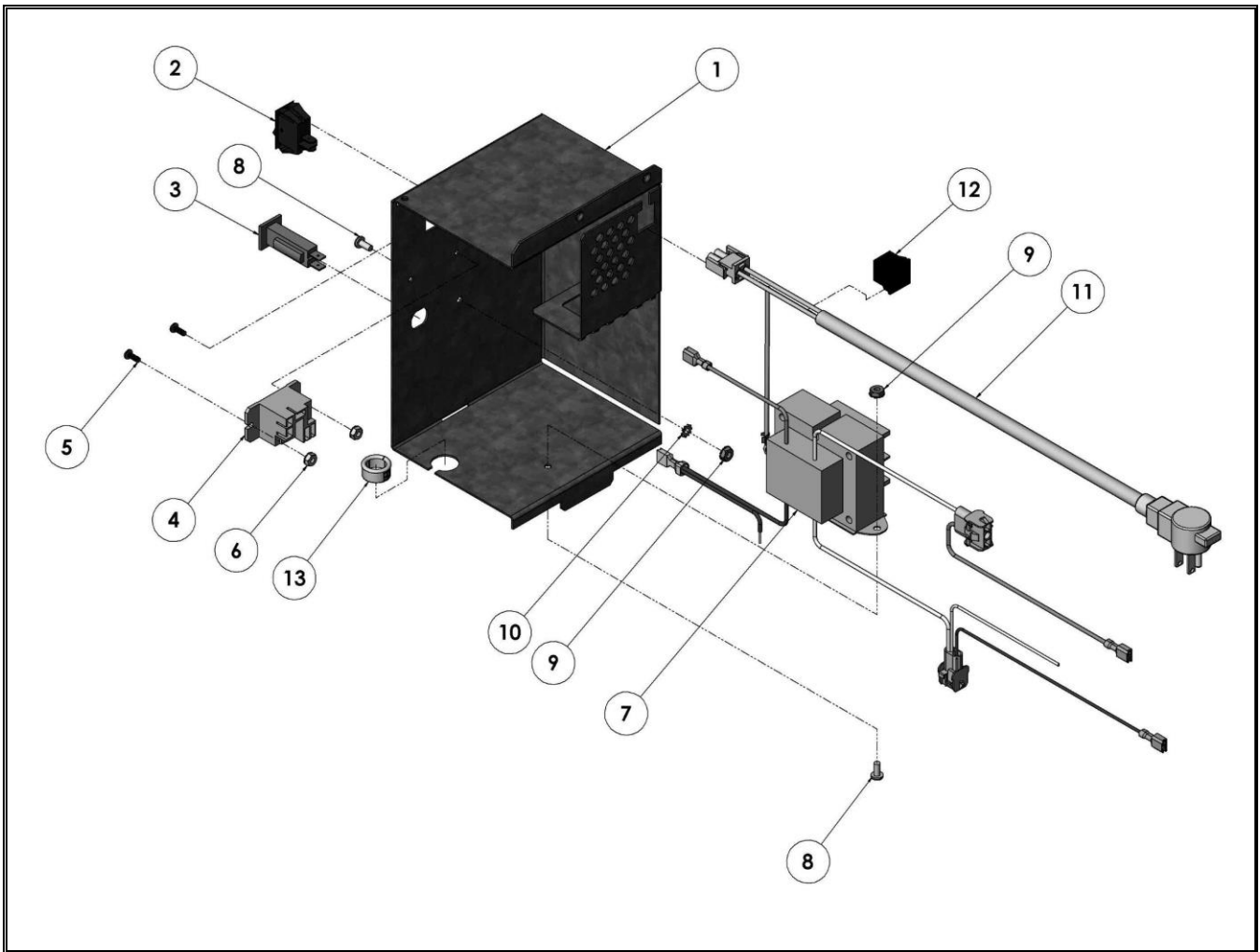
RED COLOR

IVEND PART NUMBER		
4212464.021	1	IVEND SENSOR
VEND SENSOR JUMPER HARNESS PART NUMBER		
4223124	1	VEND SENSOR JUMPER

BLUE COLOR

IVEND PART NUMBER		
4229031	1	IVEND 5 DETECTOR BOARD
4229032	1	IVEND 5 EMITTER BOARD
4225217	1	IVEND 5/10 BOARD CONNECTION HARNESS
4228980	1	IVEND 5/10 ADAPTOR HARNESS
VEND SENSOR JUMPER HARNESS PART NUMBER		
4228979	1	IVEND 5/10 SENSOR JUMPER

POWER BOX ASSEMBLY



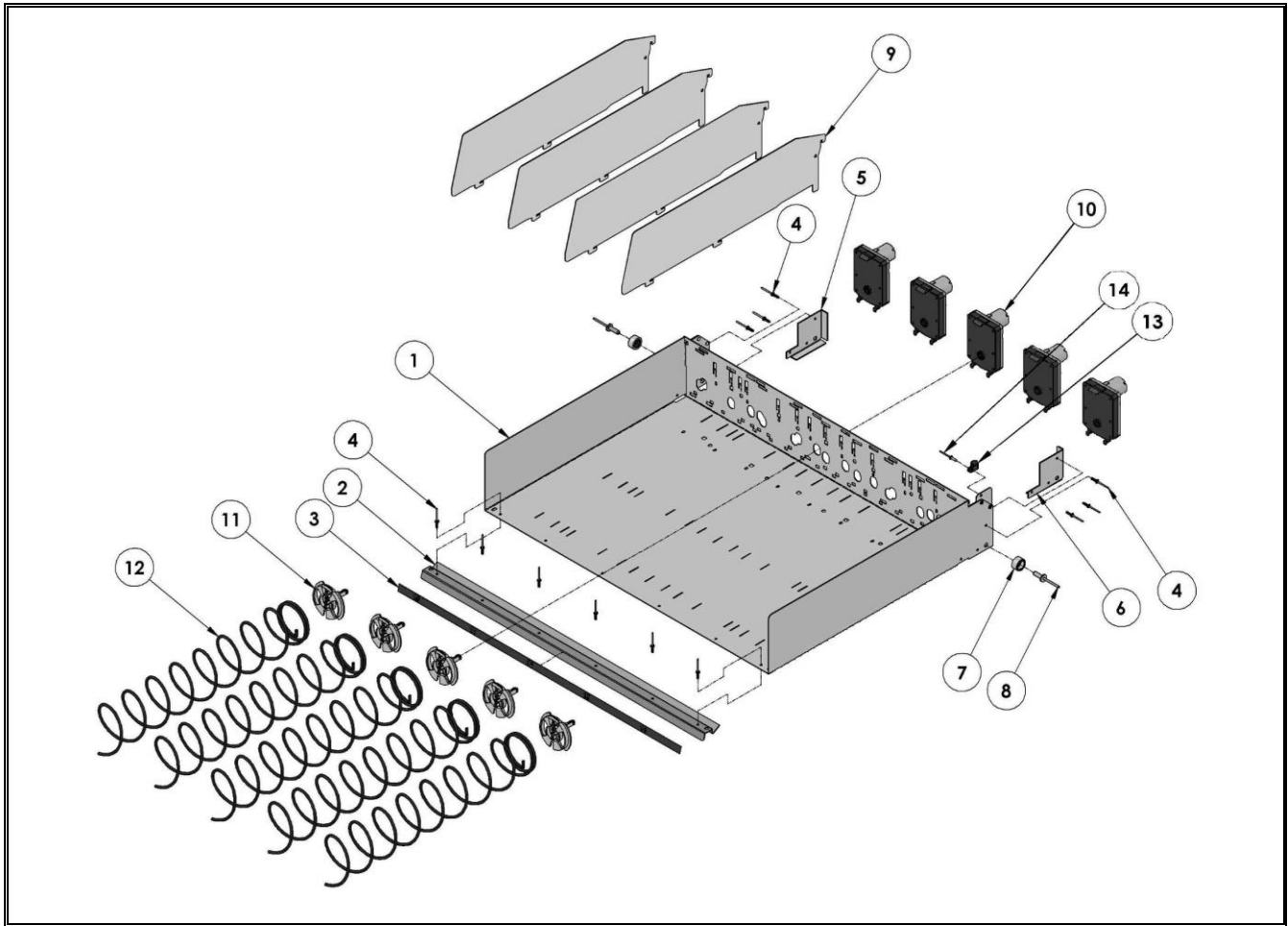
POWER BOX ASSEMBLY PARTS LIST

ITEM NO.	PART NUMBER	1221103	DESCRIPTION
1	4227478	1	POWER BOX
2	4202088	1	SWITCH-ROCKER
3	4203467.003	1	3 AMP CIRCUIT BREAKER
4	4216013	1	MINI-RELAY, SPST,24VDC
5	8800060	2	#6-32X3/8 PHIL PH M/C SCREW
6	8800955	2	#6-32 HEX NUT W/ETW
7	* 4216297	1	TRANSFORMER 110V
8	4050240	2	#8-32X3/8 PHIL PH M/C SCREW
9	8800956	2	#8-32 HEX NUT W/ETW
10	4050585	1	#8 EXT TOOTH LOCKWSHR
11	4217764	1	POWER CORD N. AMERICA
12	4222289	1	STRAIN RELIEF BUSHING
13	4223157	1	HEYCO SPLIT BUSHING
LIST OF PARTS NOT SHOWN			
14	4221538	1	REFRIGERATION POWER HARNESS
15	4221539	1	TEMP SENSOR RELAY HARNESS
16	4033704	AR	CABLE TIE
17	* 4217477	1	.250 MALE TERMINAL BLUE (AMP # 3-520107-2)
18	* 4217713	1	.250 MALE TERMINAL RED (AMP # 2-520103-2)

AR – AS REQUIRED

*** PLEASE ORDER TRANSFORMER (4216297) WITH AMP MALE SPADE CONNECTORS (4217477 & 4217713). FIELD WIRE TERMINATION IS REQUIRED – DOUBLE TERMINATE WHITE WIRE FROM TRANSFORMER AND WHITE WIRE FROM REFRIGERATION POWER HARNESS USING BLUE AMP MALE CONNECTOR. TERMINATE BLACK WIRE FROM TRANSFORMER USING RED AMP MALE CONNECTOR.**

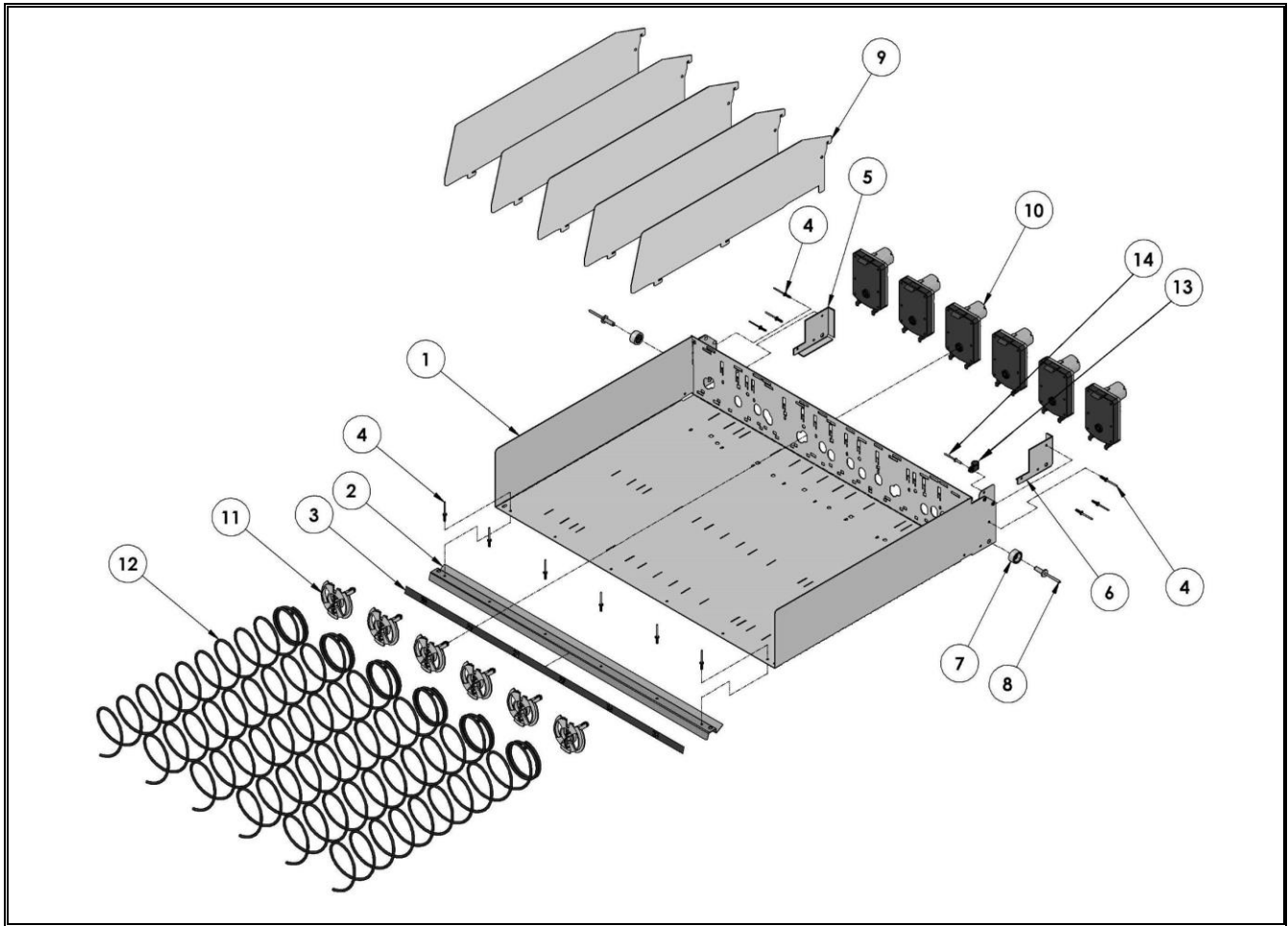
SNACK TRAY ASSEMBLY – 5 SELECT



SNACK TRAY ASSEMBLY- 5 SELECT PARTS LIST

ITEM NO.	PART NUMBER	QTY	DESCRIPTION
1	PLEASE EMAIL Parts@wittern.com FOR PART NUMBER		
2	4227704.000330	1	RIVETED TRAY BRACE
3	4218703.001	1	TRAY LABEL (5 SEL) (10-14)
4	4227648	12	RIVET 1/8
5	4227214	1	TRAY ROLLER BRACE - LEFT
6	4227214.001	1	TRAY ROLLER BRACE - RIGHT
7	4217738	2	BUSHING
8	4210421.002	2	1/4" RIVET-BLK AL/AL
9	4227920.000330	4	SNACK TRAY DIVIDER
10	4216379.004	5	MOTOR SNAP-IN 360 DEG/CCW D/SQUARE
11	4216378	5	SPIRAL ADAPTER
12	4200272.119309	5	AUGER 8 SNK/SHRT/BLK
13	8324099.4	1	P CLAMP - 3/8
14	4050667	1	1/8 ALUM POP RIVET
LIST OF PARTS NOT SHOWN			
15	4203508.003	1	TRAY HARNESS (3W)
16	4223368	1	TRAY HARNESS SPLIT BUSHING
17	4033712	AS REQUIRED	CABLE TIE

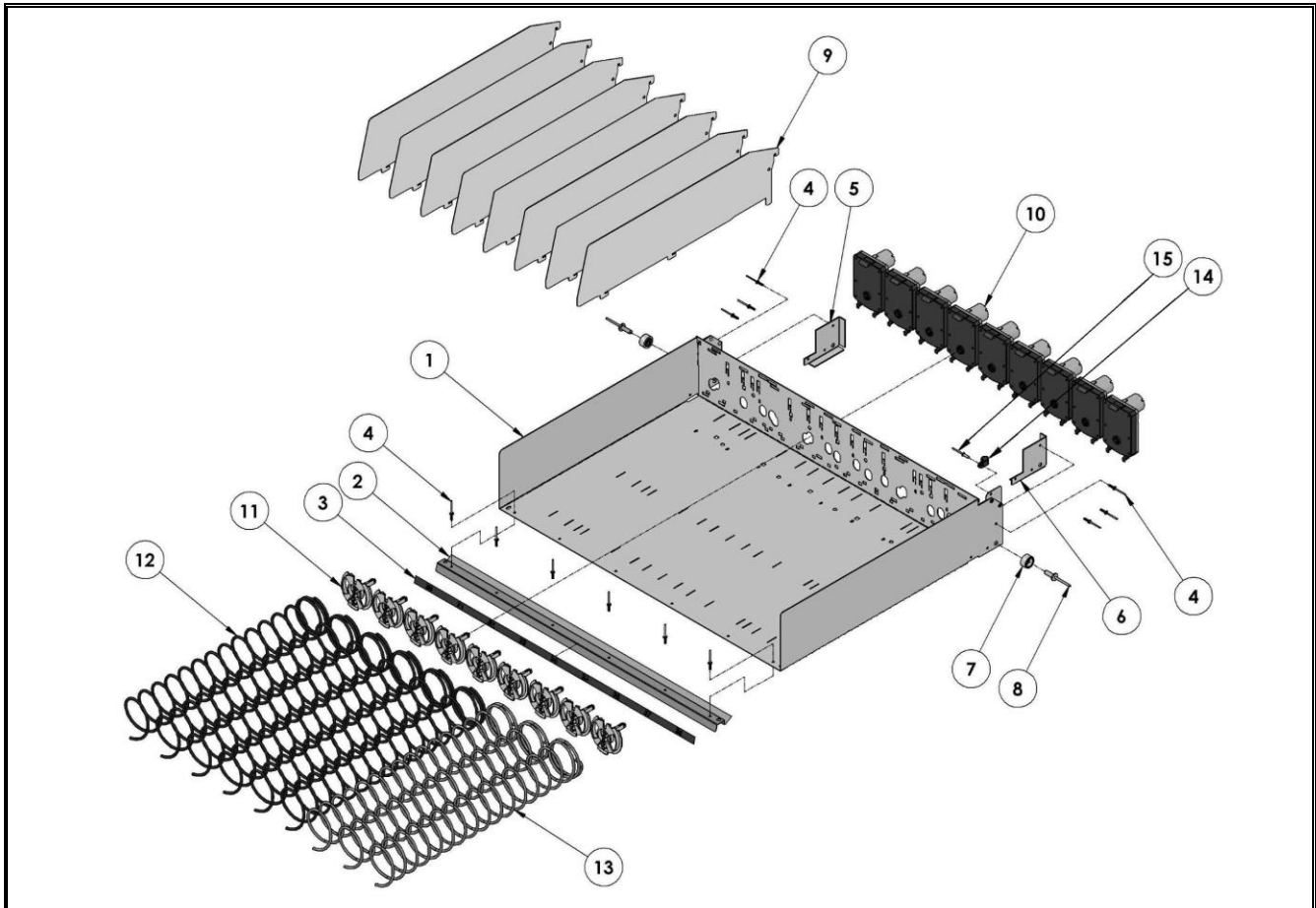
SNACK TRAY ASSEMBLY – 6 SELECT



SNACK TRAY ASSEMBLY- 6 SELECT PARTS LIST

ITEM NO.	PART NUMBER	QTY	DESCRIPTION
1	PLEASE EMAIL Parts@wittern.com FOR PART NUMBER		
2	4227704.000330	1	RIVETED TRAY BRACE
3	4221340.002	1	TRAY LABEL (6 SEL) (20-25)
4	4227648	12	RIVET 1/8
5	4227214	1	TRAY ROLLER BRACE - LEFT
6	4227214.001	1	TRAY ROLLER BRACE - RIGHT
7	4217738	2	BUSHING
8	4210421.002	2	1/4" RIVET-BLK AL/AL
9	4227920.000330	5	SNACK TRAY DIVIDER
10	4216379.004	6	MOTOR SNAP-IN 360 DEG/CCW D/SQUARE
11	4216378	6	SPIRAL ADAPTER
12	4200272.115309	6	AUGER 9 SNK/SHRT/BLK
13	8324099.4	1	P CLAMP - 3/8
14	4050667	1	1/8 ALUM POP RIVET
LIST OF PARTS NOT SHOWN			
15	4203508.003	1	TRAY HARNESS (3W)
16	4223368	1	TRAY HARNESS SPLIT BUSHING
17	4033712	AS REQUIRED	CABLE TIE

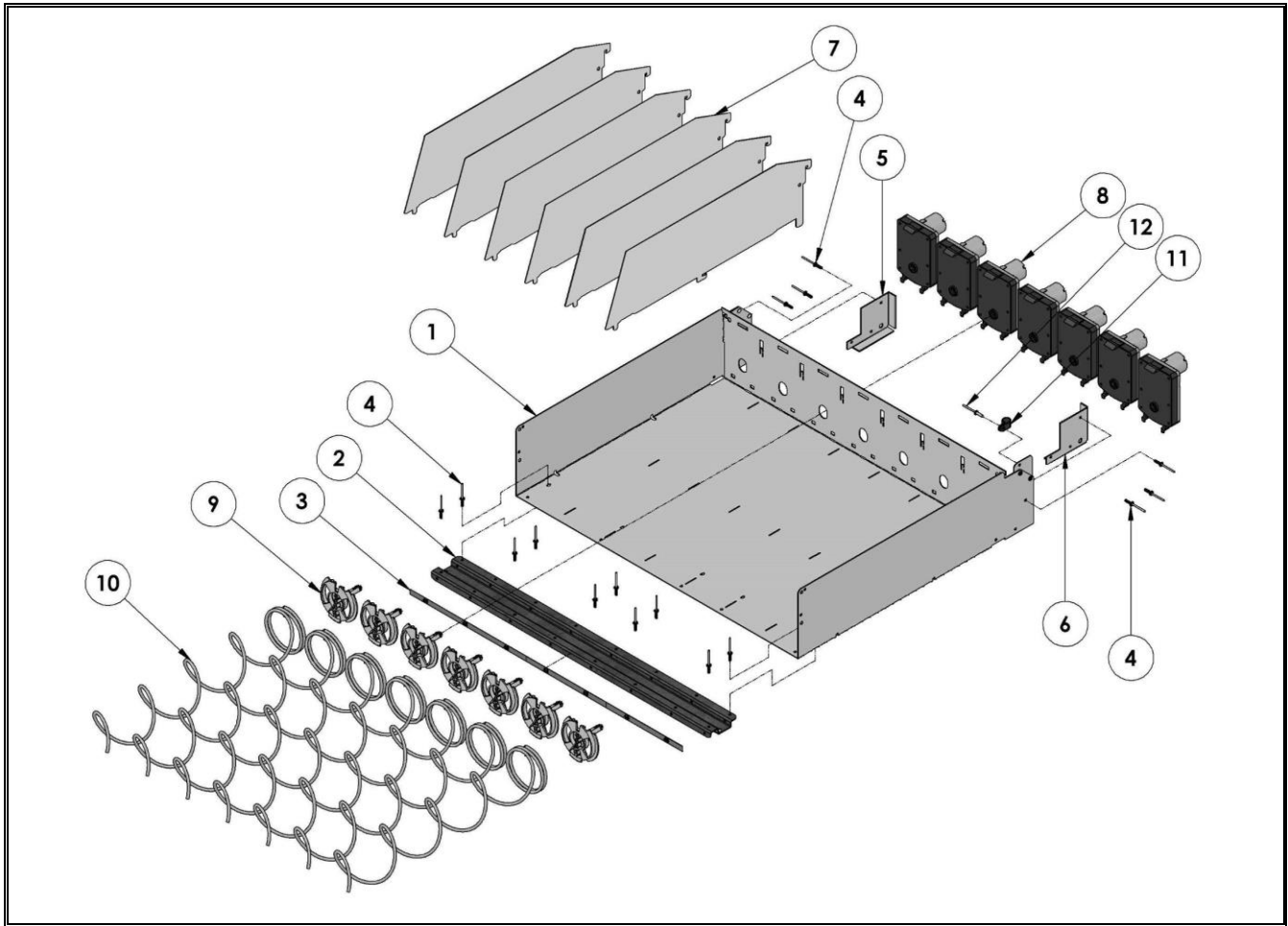
SNACK TRAY ASSEMBLY – 9 SELECT



SNACK TRAY ASSEMBLY- 9 SELECT PARTS LIST

ITEM NO.	PART NUMBER	QTY	DESCRIPTION
1	PLEASE EMAIL Parts@wittern.com FOR PART NUMBER		
2	4227704.000330	1	RIVETED TRAY BRACE
3	4218702	1	TRAY LABEL (9 SEL) (30-38)
4	4227648	12	RIVET 1/8
5	4227214	1	TRAY ROLLER BRACE - LEFT
6	4227214.001	1	TRAY ROLLER BRACE - RIGHT
7	4217738	2	BUSHING
8	4210421.002	2	1/4" RIVET-BLK AL/AL
9	4227920.000330	8	SNACK TRAY DIVIDER
10	4216379.004	9	MOTOR SNAP-IN 360 DEG/CCW D/SQUARE
11	4216378	9	SPIRAL ADAPTER
12	4200272.116309	6	AUGER 13 CNDY/SHRT/BLK
13	4211397.004309	3	AUGER 15CT CNDY/CCW/BLK
14	8324099.4	1	P CLAMP - 3/8
15	4050667	1	1/8 ALUM POP RIVET
LIST OF PARTS NOT SHOWN			
16	4203508.005	1	TRAY HARNESS (5W)
17	4223368	1	TRAY HARNESS SPLIT BUSHING
18	4033712	AS REQUIRED	CABLE TIE

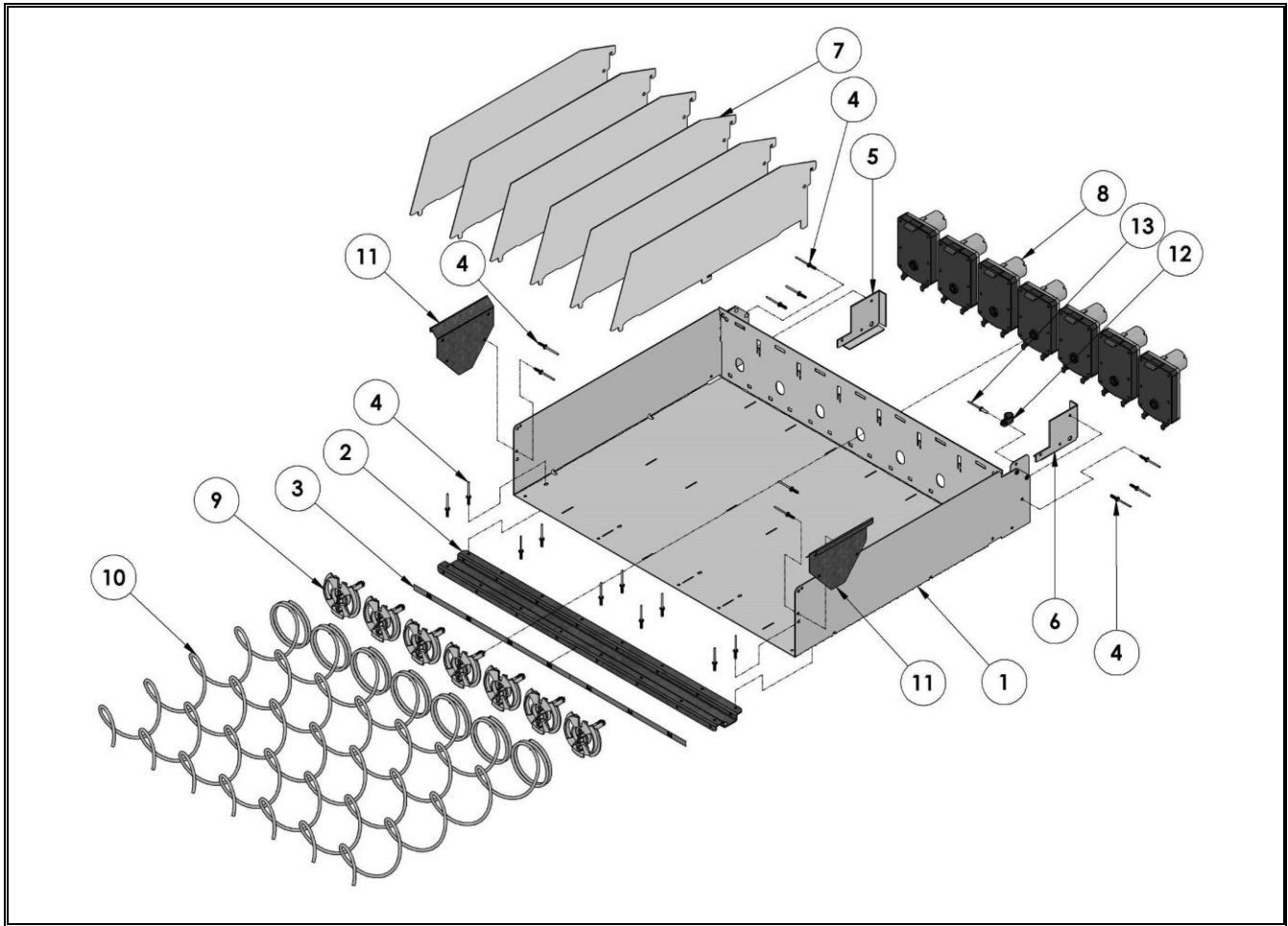
CAN/BOTTLE TRAY ASSEMBLY – SELECTION 40



CAN/BOTTLE TRAY ASSEMBLY- SELECTION 40 PARTS LIST

ITEM NO.	PART NUMBER	QTY	DESCRIPTION
1	PLEASE EMAIL Parts@wittern.com FOR PART NUMBER		
2	4227301.000330	1	CAN/BOTTLE TRAY BRACE
3	4218199.005	1	BOTTLE TRAY LABEL (40/43/45)
4	4227648	16	RIVET 1/8
5	4227214	1	TRAY ROLLER BRACE - LEFT
6	4227214.001	1	TRAY ROLLER BRACE - RIGHT
7	4227922.000330	6	C/B TRAY DIVIDER
8	4216379.004	7	MOTOR SNAP-IN 360 DEG/CCW D/SQUARE
9	4216378	7	SPIRAL ADAPTER
10	4217851.000309	7	SPIRAL (4.25 CT)
11	8324099.4	1	P CLAMP - 3/8
12	4050667	1	1/8 ALUM POP RIVET
LIST OF PARTS NOT SHOWN			
13	4223272	1	FUTURA BOTTLE TRAY HARNESS
14	4223368	1	TRAY HARNESS SPLIT BUSHING
15	4033712	AS REQUIRED	CABLE TIE

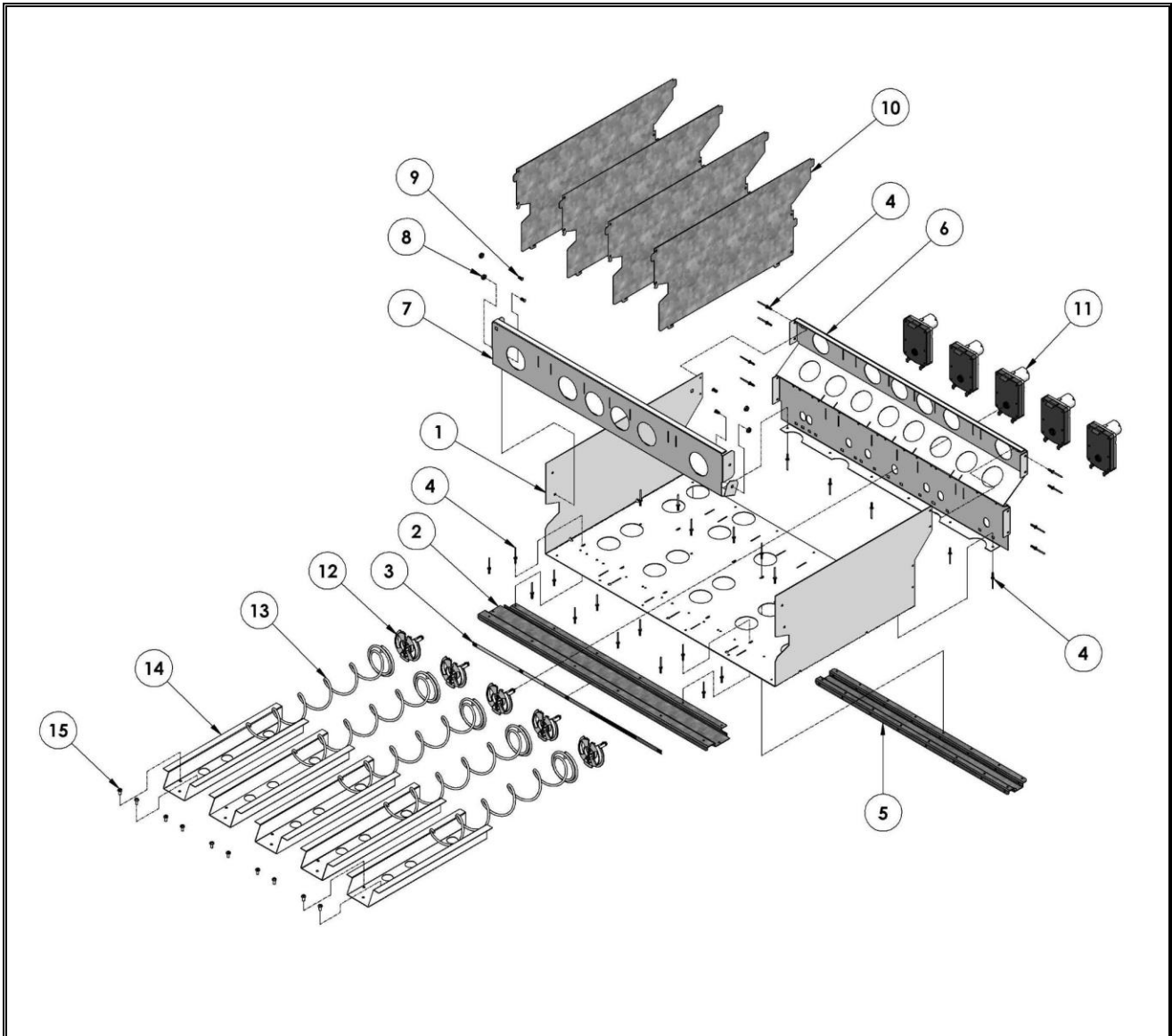
CAN/BOTTLE TRAY ASSEMBLY – SELECTION 50



CAN/BOTTLE TRAY ASSEMBLY- SELECTION 50 PARTS LIST

ITEM NO.	PART NUMBER	QTY	DESCRIPTION
1	PLEASE EMAIL Parts@wittern.com FOR PART NUMBER		
2	4227301.000330	1	CAN/BOTTLE TRAY BRACE
3	4218199.001	1	BOTTLE TRAY LABEL (50&54)
4	4227648	20	RIVET 1/8
5	4227214	1	TRAY ROLLER BRACE - LEFT
6	4227214.001	1	TRAY ROLLER BRACE - RIGHT
7	4227922.000330	6	C/B TRAY DIVIDER
8	4216379.004	7	MOTOR SNAP-IN 360 DEG/CCW D/SQUARE
9	4216378	7	SPIRAL ADAPTER
10	4217851.000309	7	SPIRAL (4.25 CT)
11	4227382	2	TRAY PRODUCT DEFLECTOR
12	8324099.4	1	P CLAMP - 3/8
13	4050667	1	1/8 ALUM POP RIVET
LIST OF PARTS NOT SHOWN			
14	4223272	1	FUTURA BOTTLE TRAY HARNESS
15	4223368	1	TRAY HARNESS SPLIT BUSHING
16	4033712	AS REQUIRED	CABLE TIE

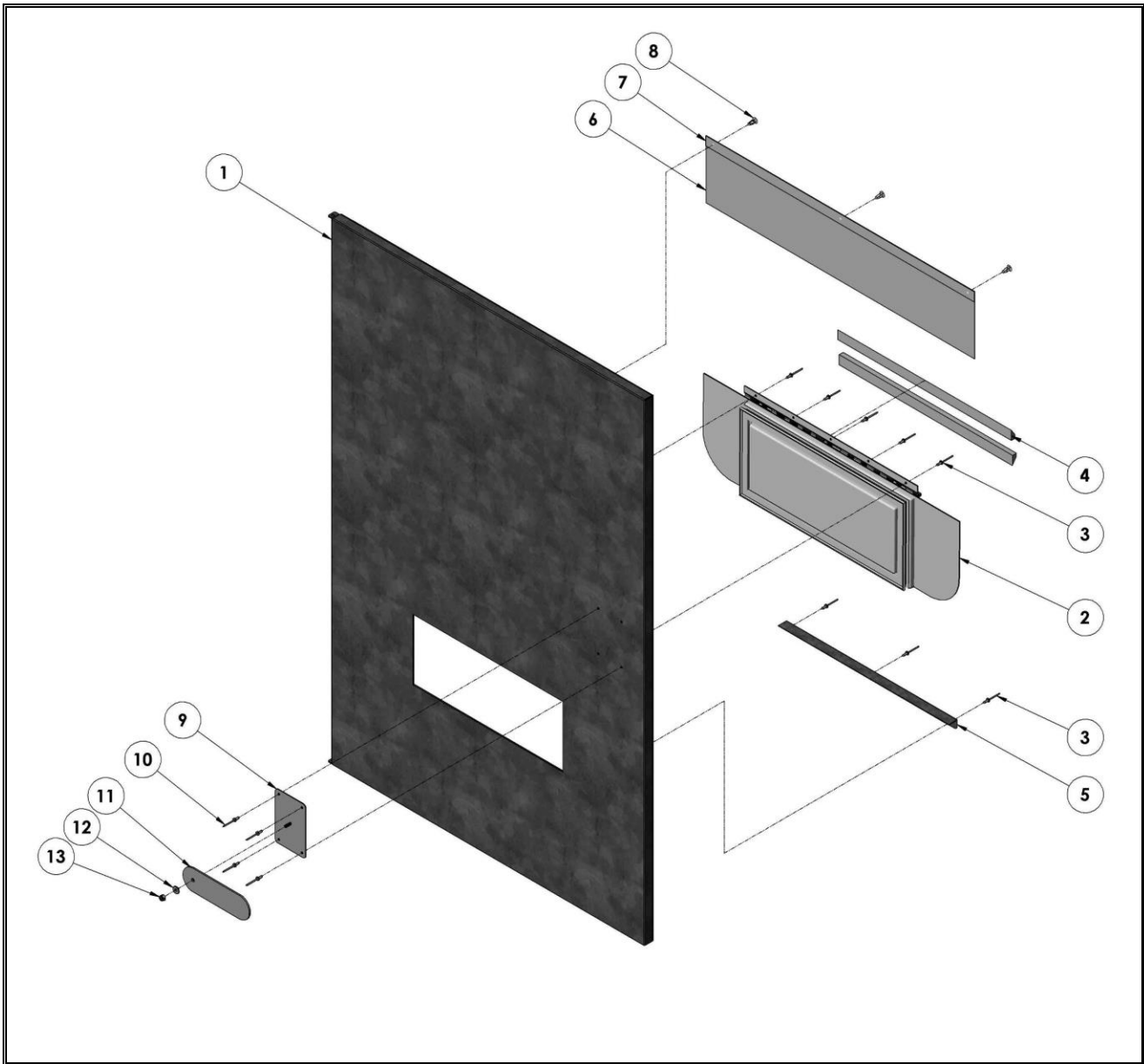
HCCT TRAY ASSEMBLY – SELECTION 60



HCCT TRAY ASSEMBLY- SELECTION 60 PARTS LIST

ITEM NO.	PART NUMBER	QTY	DESCRIPTION
1	PLEASE EMAIL Parts@wittern.com FOR PART NUMBER		
2	4227421.000330	1	HCCT FRONT TRAY BRACE
3	4218200.001	1	HCCT TRAY LABEL (60/62/63/64)
4	4227648	34	RIVET 1/8
5	4227301.000330	1	CAN/BOTTLE TRAY BRACE
6	4227910.000330	1	HCCT MOTOR BACK
7	4227898.000330	1	HCCT FRONT
8	8800956	4	#8-32 HEX NUT W/ETW
9	4203386.042	4	#8-32X3/8 CAPT. STUD
10	4227897.000330	4	HCCT DIVIDER
11	4216379.004	5	MOTOR SNAP-IN 360 DEG/CCW D/SQUARE
12	4216378	5	SPIRAL ADAPTER
13	4217849.000309	5	SPIRAL HCCT
14	4217850.000330	5	SPIRAL RETAINER
15	4050239.001	10	#8-32X3/8 PHL PH TYPE 23 SCREW
LIST OF PARTS NOT SHOWN			
16	4203508.003	1	TRAY HARNESS (3W)
17	4223368	1	TRAY HARNESS SPLIT BUSHING
18	4033712	AS REQUIRED	CABLE TIE

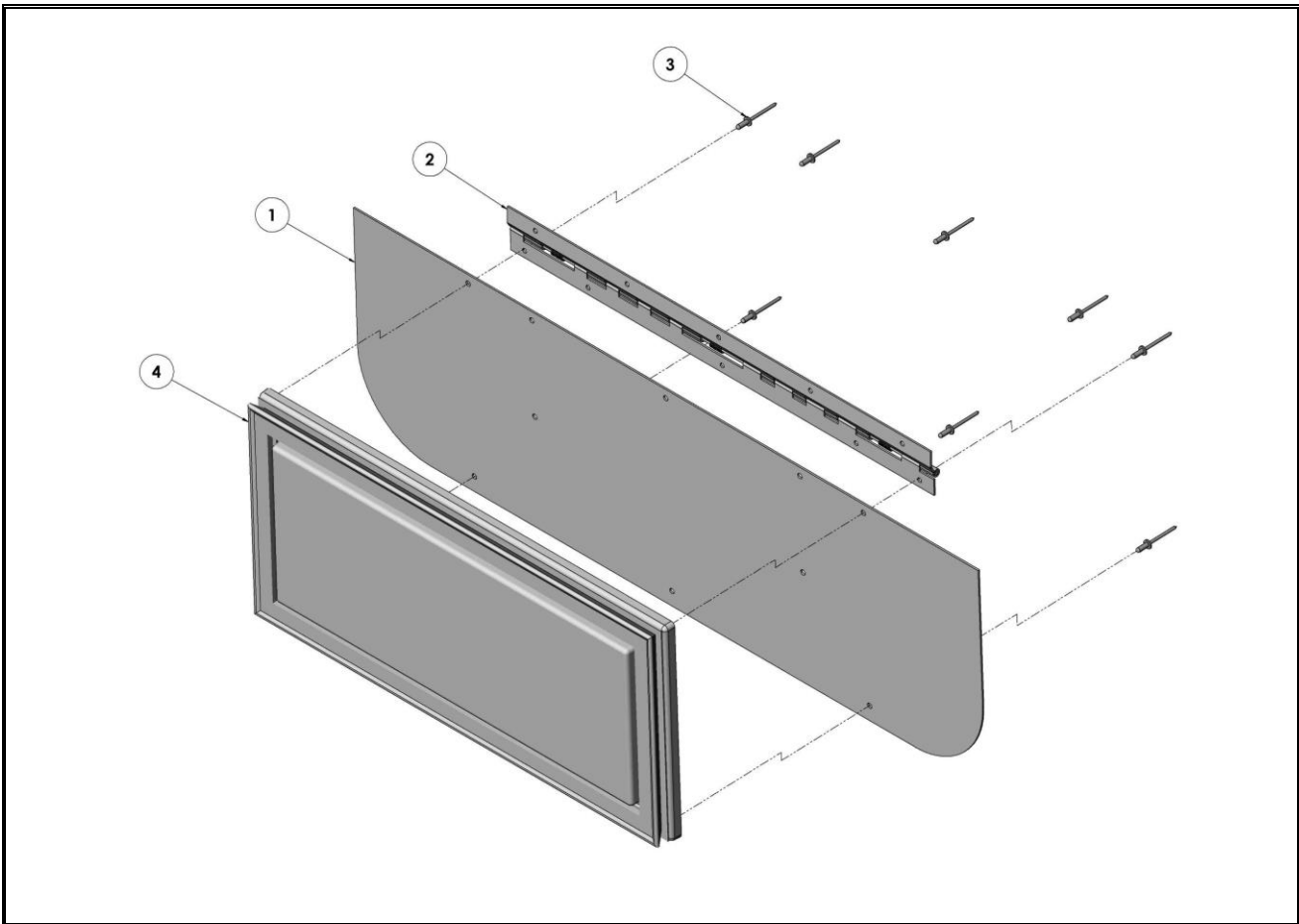
INNER DOOR ASSEMBLY



INNER DOOR ASSEMBLY PARTS LIST

ITEM NO.	PART NUMBER	1221058	DESCRIPTION
1	1221059	1	INNER DOOR FOAM ASSEMBLY
2	1219258	1	DELIVERY DOOR ASSY (SEE PAGE #22)
3	4050667.001	8	1/8 ALUM POP RIVET
4	4211555	2.5 FT	BEVELED FOAM GASKET 3/4
5	4218403.000330	1	DELIVERY COVER BRACKET
6	4218996	1	HINGE COVER
7	4208565	2 FT	DOUBLE SIDED TAPE .750
8	4205329	3	ARROW CLIP
9	4227183.001330	1	BACK PLATE - INNER DOOR
10	4050667.011	4	1/8 ALUM POP RIVET/BLK
11	4227184.000330	1	INNER DOOR LATCH
12	4030100.002	1	BUSHING-SPACER
13	4210384	1	#8-32 NYLOK NUT
LIST OF PARTS NOT SHOWN			
14	4209845	3.5 FT	PROTECTIVE WINDOW SEAL 1/2"
15	4223599	1	INSTRUCTION LABEL

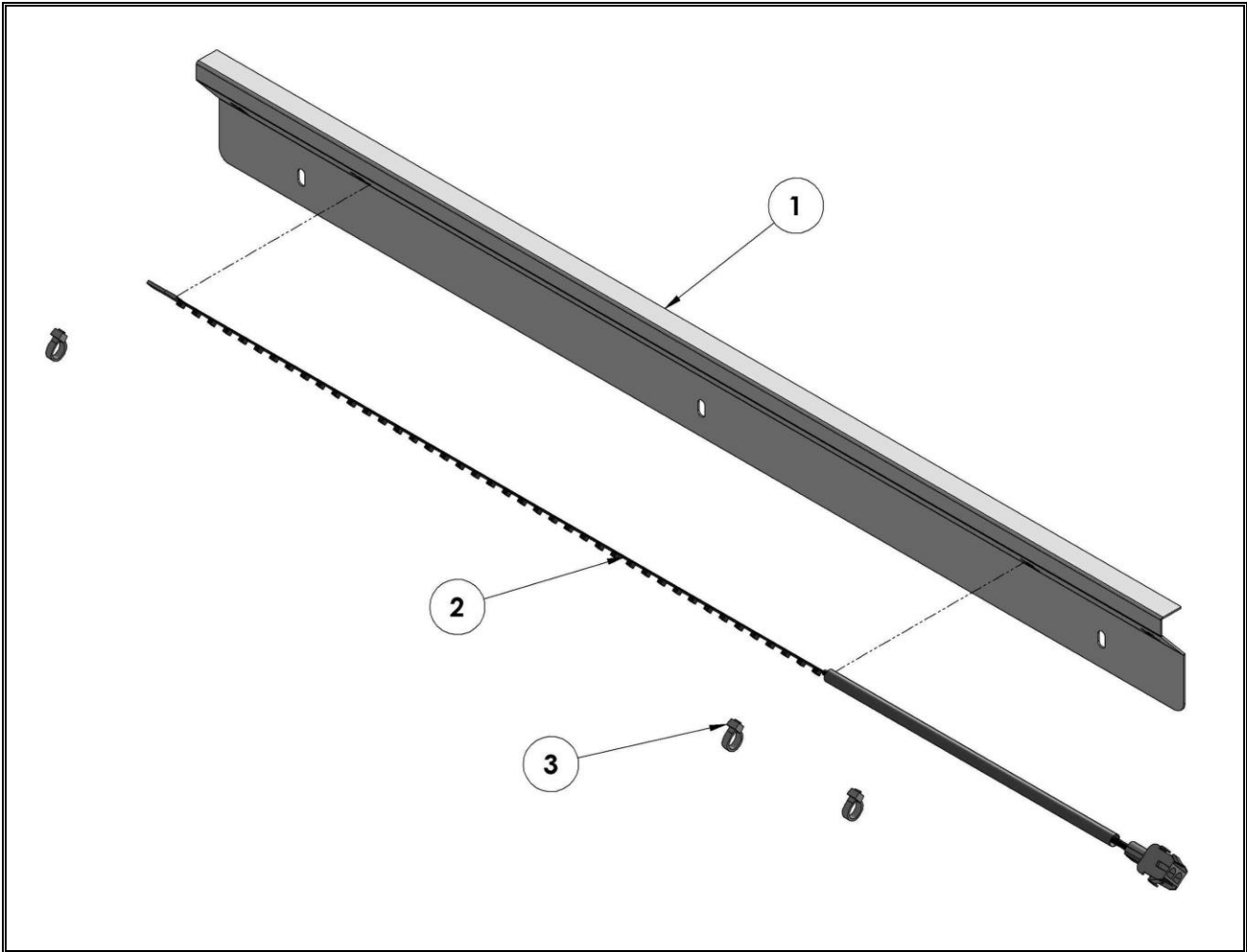
DELIVERY DOOR ASSEMBLY



DELIVERY DOOR ASSEMBLY PARTS LIST

ITEM NO.	PART NUMBER	1219258	DESCRIPTION
1	4223173.000330	1	DELIVERY DOOR BACK
2	4222972	1	SPRING HINGE
3	4050667.001	8	1/8 ALUM POP RIVET
4	PLEASE EMAIL Parts@wittern.com FOR PART NUMBER		

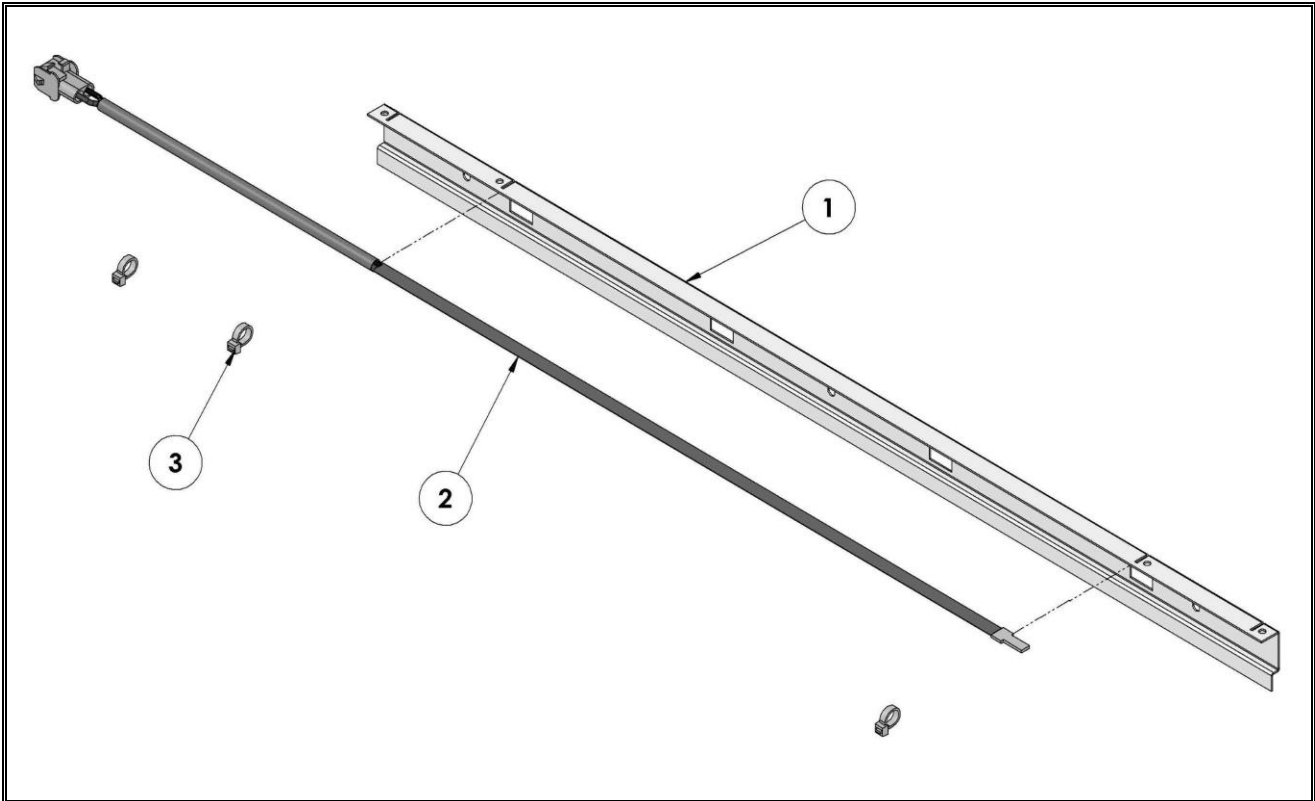
LED ASSEMBLY - TOP



LED ASSEMBLY - TOP PARTS LIST

ITEM NO.	PART NUMBER	1221055	DESCRIPTION
1	4227304.000309	1	TOP WINDOW RETAINER
2	4227128	1	24VAC STRIP LED
3	4033704	3	CABLE TIE

LED ASSEMBLY - DISPLAY



LED ASSEMBLY - DISPLAY PARTS LIST

ITEM NO.	PART NUMBER	1221177	DESCRIPTION
1	4223057.000309	1	DISPLAY LED MOUNT
2	4227128	1	24VAC STRIP LED
3	4033704	3	CABLE TIE

NOTES:

The contents of this publication are presented for informational purposes only, and while every effort has been made to ensure their accuracy, they are not to be construed as warranties or guarantees, express or implied, regarding the products or services described herein or their use or applicability. We reserve the right to modify or improve the designs or specifications of such products at any time without notice.



Web Site	www.vendnetusa.com
Email	Parts@witern.com
Phone Number	515-875-4218