

# **MULTI-ZONE FOAMED MACHINE**

## **MODEL - 3576**

# **PARTS MANUAL**



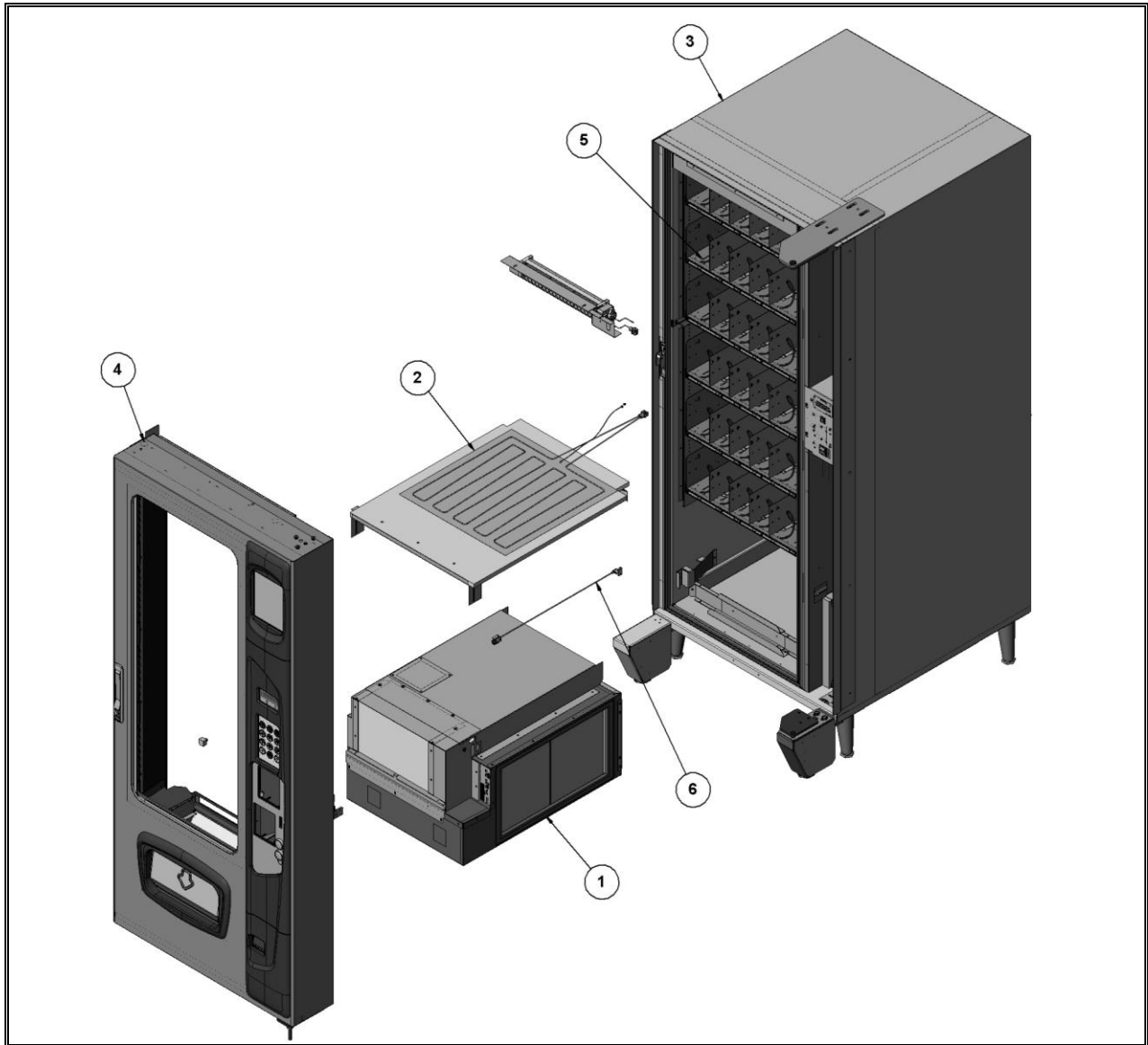
**VendNet™**

165 North 10<sup>th</sup> Street  
Waukee, IOWA 50263-0488  
United States of America

# TABLE OF CONTENTS

<b>FINAL ASSEMBLY</b> .....	<b>1</b>
<i>FINAL ASSEMBLY PARTS LIST</i> .....	1
<b>DOOR ASSEMBLY</b> .....	<b>2</b>
<i>DOOR ASSEMBLY PARTS LIST</i> .....	3
<b>DELIVERY BOX ASSEMBLY (SN &lt; 1380575)</b> .....	<b>6</b>
<i>DELIVERY BOX ASSEMBLY PARTS LIST</i> .....	6
<b>ADA DELIVERY LIFT ASSEMBLY (SN &lt; 1380575)</b> .....	<b>7</b>
<i>(1216062.240) ADA DELIVERY LIFT INSTALL KIT PARTS</i> .....	7
<b>ADA DELIVERY BOX ASSEMBLY (SN≥1380575)</b> .....	<b>8</b>
<i>(1219617 ADA READY WITHOUT LIFT MECHANISM)</i> .....	8
<i>(1219617.001 WITH LIFT MECHANISM)</i> .....	8
<b>DELIVERY LIFT MECHANISM SIDE ASSY</b> .....	<b>9</b>
<b>1219686 (L) &amp; 1219686.001 (R)</b> .....	<b>9</b>
<i>(ADA MECHANICAL LIFT SIDE ASSY)</i> .....	10
<b>LED SIDE ASSEMBLY (TWO TYPES: 12DC STRIP &amp; 24VAC ENGINE)</b> .....	<b>11</b>
<i>(CHANGED FROM ENGINES TO STRIP LED'S ON SERIAL # 1347719)</i> .....	11
<b>CABINET ASSEMBLY</b> .....	<b>12</b>
<i>3CABINET ASSEMBLY PARTS LIST</i> .....	13
<b>CABINET SUB ASSEMBLY</b> .....	<b>15</b>
<i>CABINET SUB ASSEMBLY PARTS LIST</i> .....	15
<b>MZF TRAY ASSEMBLY</b> .....	<b>16</b>
<i>(1217778) MZF TRAY ASSEMBLY PARTS LIST</i> .....	16
<b>REFERIGERATION MODULE ASSEMBLY</b> .....	<b>18</b>
<i>(1217671) REFERIGERATION MODULE ASSEMBLY PARTS LIST</i> .....	18
<b>CONDENSER FAN ASSEMBLY</b> .....	<b>20</b>
<i>(1216861.XXX) ASSEMBLY PARTS LIST</i> .....	20
<b>MZF INSTALL ASSEMBLY KIT</b> .....	<b>21</b>
<i>(INSTALL KIT P/N 1216062.181 (115V) PARTS LIST</i> .....	21
<b>POWER PANEL ASSEMBLY</b> .....	<b>22</b>
<i>(1217694.012) POWER PANEL PARTS LIST</i> .....	22

## FINAL ASSEMBLY

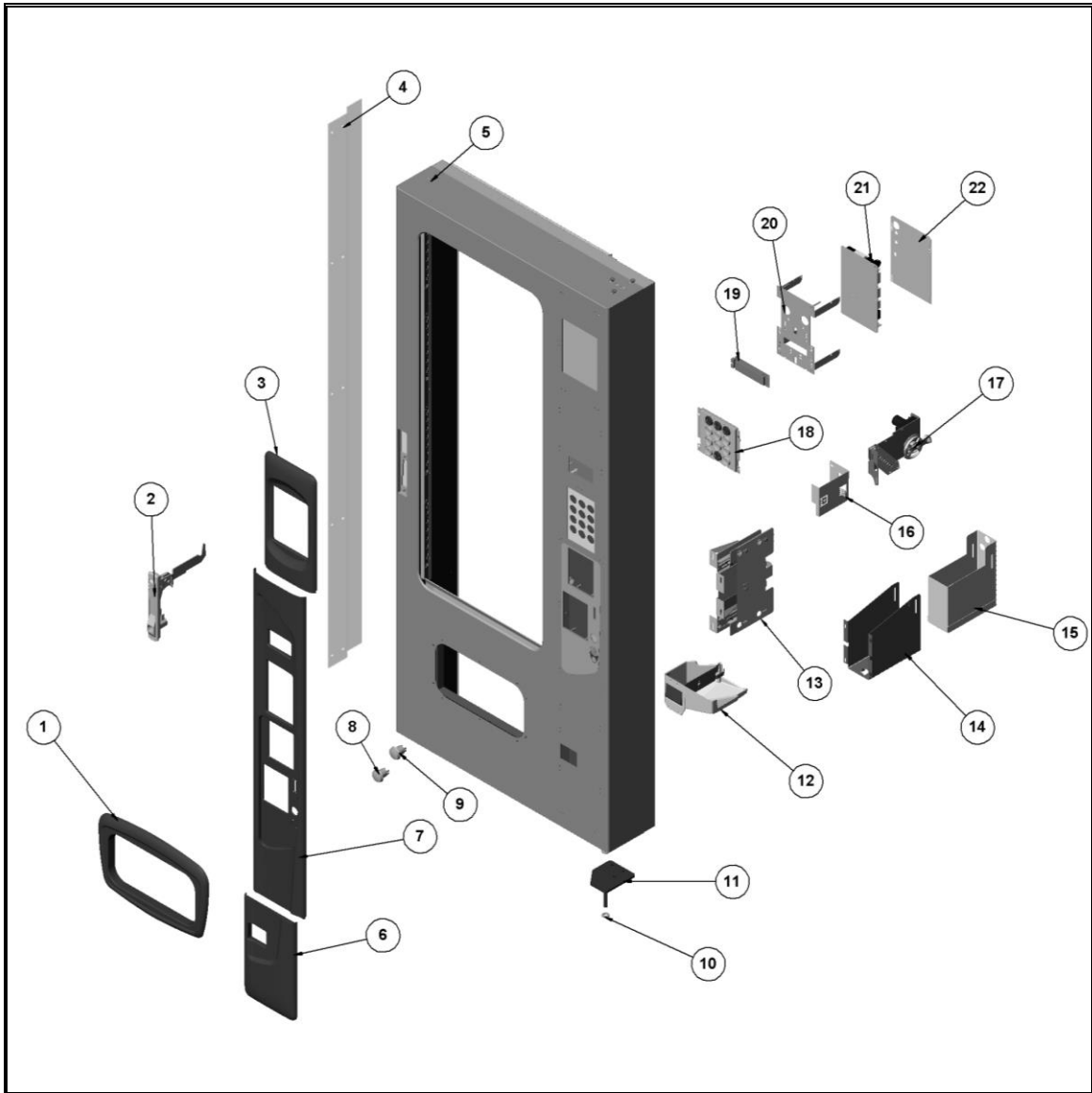


### FINAL ASSEMBLY PARTS LIST

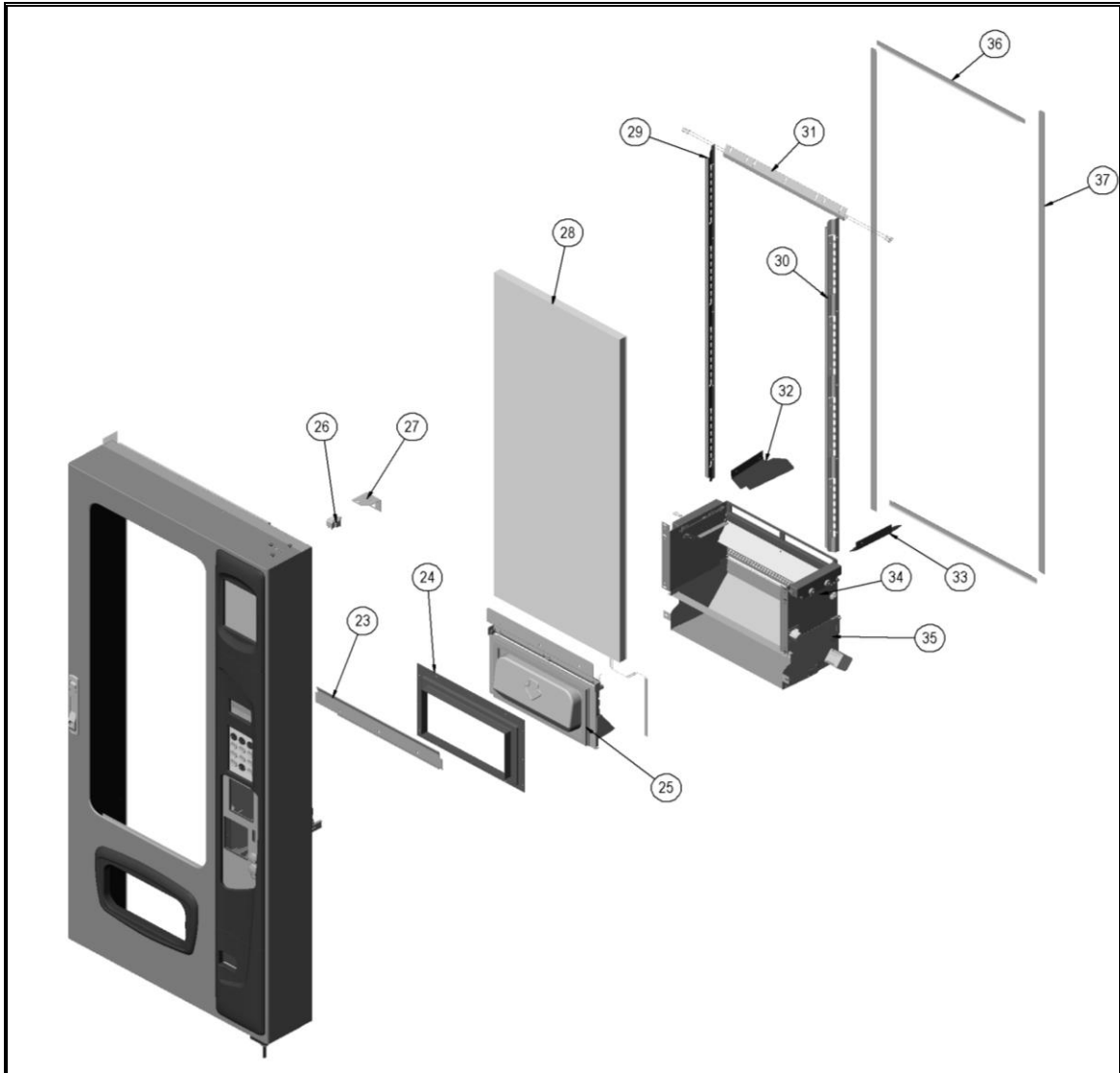
ITEM NO.	PART NUMBER	QTY.	DESCRIPTION
1	1217671	1	REFERIGERATION MODULE <a href="#">(SEE PAGE #14)</a>
2	1216062.182 (115V)	1	MZF INSTALL KIT <a href="#">(SEE PAGE #17)</a>
3	1217776	1	CABINET ASSEMBLY <a href="#">(SEE PAGE #8)</a>
4	1218694	1	DOOR ASSEMBLY <a href="#">(SEE PAGE #2)</a>
5	1217778	6	MZF TRAY <a href="#">(SEE PAGE #12)</a>
6	4214684	1	TEMP SENSOR

AR – As required

## DOOR ASSEMBLY



AR – As required



### DOOR ASSEMBLY PARTS LIST

ITEM NO.	PART NUMBER	QTY	DESCRIPTION (PARTS NEEDED FOR INSTALL)
1	4219778	1	DELIVERY BEZEL ((10)-8801011 & (10)-8801322)
2	4218645	1	DOOR HANDLE ASSEMBLY ((2)-8800956)
3	4219772	1	DOOR BEZEL TOP ((6) – 4220189)
4	4215733	1	LATCH SIDE ANTI CHEAT ((10) – 4220412)
5	1218692	1	DOOR FOAM ASSEMBLY
6	4219774	1	DOOR BEZEL BOTTOM ((6) – 4220189)
7	4219773	1	DOOR BEZEL MIDDLE ((12) – 4220189)
8	4219726	1	DELIVERY LIFT BUTTON
9	4219726	1	COIN RETURN BUTTON
10	4219752	3	NYLON WASHERS
11	1217994	1	BOTTOM HINGE STAKE ASSY ((3) – 4212089)

AR – As required

ITEM NO.	PART NUMBER	QTY	DESCRIPTION (PARTS NEEDED FOR INSTALL)
12	4222571	1	COIN CUP ((4) – 8800956)
13	1218371	1	COIN MECH MOUNT ASSEMBY ((2)- 8800956)
14	4219374	1	COIN BOX MOUNT ((4)-880956)
15	4219350	1	COIN BOX
16	4220349	1	COIN MECH RETURN COVER
17	1218519	1	COIN RETURN MECHANISM ((2) -8800956)
18	1216670	1	KEYPAD ((4)-880956)
19	4216028.001	1	DISPLAY ((4)-4214729)
20	4216656.001	1	DISPLAY/CONTROL BOARD MOUNT ((4)-4209866)
21	4214682.002	1	GVC2 CONTROL BOARD
22	4216657	1	CONTROL BOARD COVER
23	4220317	1	BOTTOM WINDOW DEFLECTOR ((3)-4213164.008)
24	1218191 sn<1380575	1	TRANSITION PORT ASSEMBLY ((12)-4050180)
	1219691 sn≥1380575	1	TRANSITION PORT ASSEMBLY
25	1218509 sn<1380575	1	DELIVERY DOOR ASSEMBLY ((3)-8800956)
	1219618 sn≥1380575	1	DELIVERY DOOR ASSEMBLY
	1219619 sn≥1380575	1	DELIVERY DOOR WITH GASKET ONLY
26	4212621	1	DOOR SWITCH
27	4217588	1	DOOR SWITCH MOUNT
28	4220168	1	TRIPLE PANE HEATED GLASS ((11ft) – 4212681)
29	1217770	1	SIDE LED ASSEMBLY (TWO TYPES) ( <a href="#">SEE PAGE #7</a> )
30	1218701	1	SIDE LED ASSEMBLY (TWO TYPES) ( <a href="#">SEE PAGE #7</a> )
31	1218084	1	TOP LED ASSEMBLY ((3)-8800956)
32	4220328.001	1	LEFT DELIVERY DEFLECTOR ((2)-4215272 & (2)-4050180)
33	4220328	1	RIGHT DELIVERY DEFLECTOR (2)-4215272 & (2)-4050180)
34	1218507	1	DELIVERY BOX TOP ASSEMBLY(1218507.001 STRIP LED)
	1219617 sn≥1380575	1	ADA READY DELIVERY BOX ASSEMBLY (SEE PAGE#8)
	1219617.001sn≥1380575	1	ADA DELIVERY BOX ASSEMBLY
35	1218651	1	ADA DELIVERY BOX BOTTOM ASSY (SEE PAGE#6)
	1218653	1	ADA READY DELIVERY BOX ASSEMBLY
36	4219651.001	2	TOP AND BOTTOM STAINLESS STEEL STRIPS
37	4219651	2	RIGHT & LEFT STAINLESS STEEL STRIPS

**LIST OF PARTS NOT SHOWN**

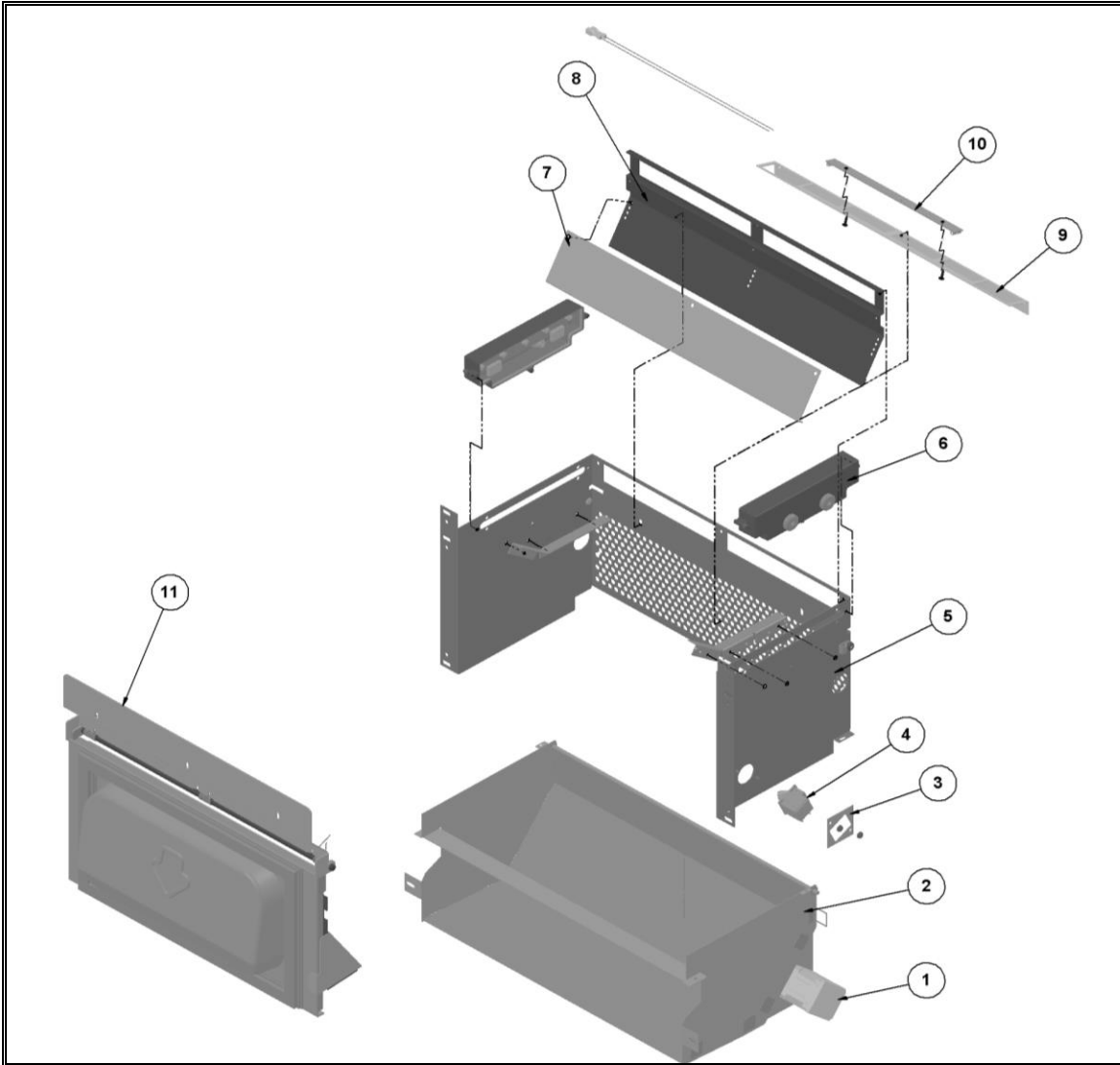
38	7250135.003	2	HOLE PLUG-BPF 3/4
39	8800956	34	8-32 HEX NUT W/ETW
40	7090002.713	3	3/4 CABLE CLAMP
41	8620828	1	4 PIN COVER
42	4218439	1	HANDLE HOOK TRIM PLATE
43	4215119.001	AR	FOAM TAPE
44	4216028	1	VF DISPLAY, RIGHT ANGLE
45	4202841.009	1	READOUT WINDOW/BLUE
46	4216687	4	TUBULAR SPACER
47	4216031	1	SERVICE MODEL LABEL - GVC2
48	4209866	4	6-32 PLASTIC NUT
49	4211310.375	4	BOARD STANDOFF
50	4217576	1	SELECTOR PANEL DECAL
51	1215919.011	1	INSTRUCTION INSERT
52	4050202.001	10	8-18 x 1/2 PHIL HWH TEK

AR – As required

ITEM NO.	PART NUMBER	QTY	DESCRIPTION (PARTS NEEDED FOR INSTALL)
53	8801322	10	8-18X1/2 PHIL PH-HILO
54	4215947.002	1	HEATER WIRE FOR MAIN DOOR
55	4219530	1	HEATER WIRE DELIVERY DOOR
56	4216708	1	I-VEND EXTENSION CABLE
57	4214278	1	DEX HARNESS
58	4215373	1	DOOR SWITCH HARNESS
59	4215719	1	GVC2 DISPLAY CABLE
60	4216099	1	KEYPAD CABLE
61	4217620	1	LED POWER HARNESS

AR – As required

## DELIVERY BOX ASSEMBLY (SN < 1380575)



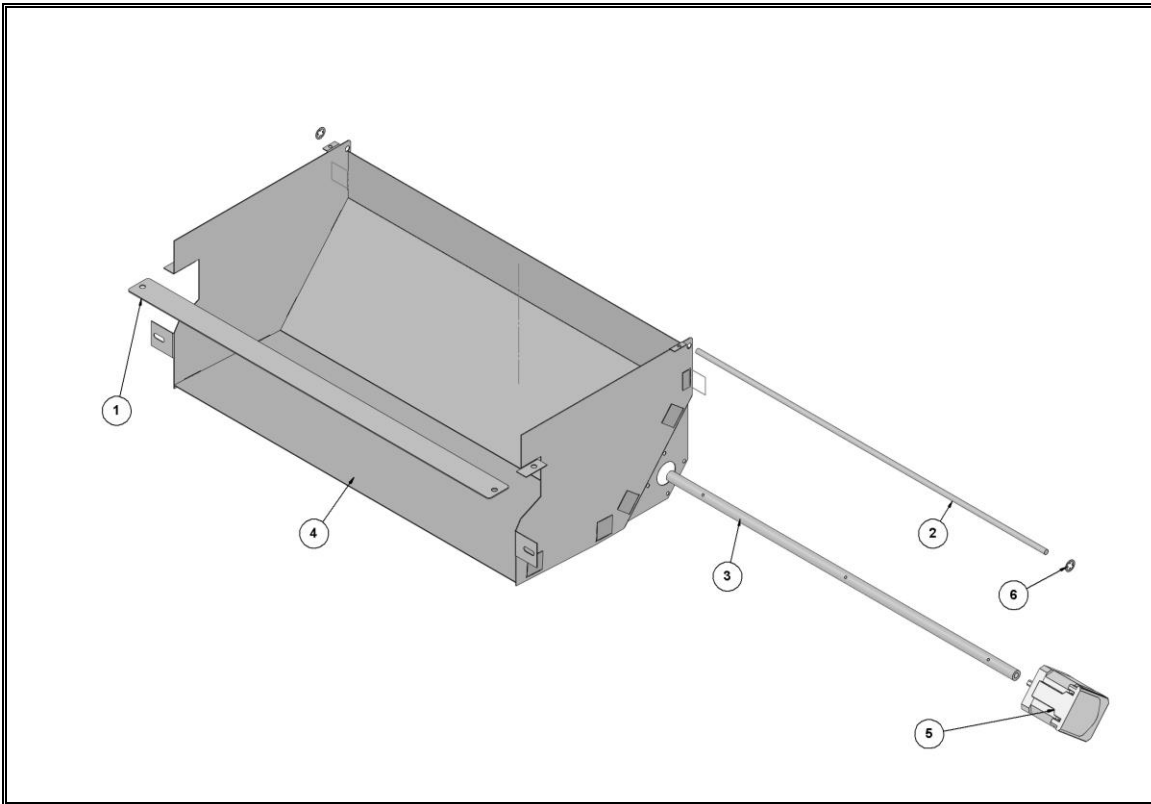
### DELIVERY BOX ASSEMBLY PARTS LIST

ITEM NO.	PART NUMBER	QTY	DESCRIPTION	(PARTS NEEDED FOR INSTALL)
1	4220717	1	STEPPER MOTOR	((2)- 4221184)
2	1218653	1	DELIVERY BOX BOTTOM	
3	4221737	1	SWITCH MOUNTING BRACKET	
4	4212621	1	SWITCH FOR ADA LIFT	
5	4220766	1	DELIVERY BOX WRAPPER	
6	1217697	1	I-VEND BOX ASSEMBLY	((4)- 8800029 & (4) – 4215208)
7	4220324	1	DELIVERY BOX DEFLECTOR	
8	4220323	1	DELIVERY BOX HARNESS COVER	
9	4220325	1	DELIVERY BOX LED MOUNT	
10	4216544	1	LED ENGINE ((2)- 4215561)	(STRIP LED 4220902.001)
11	1218509	1	DELIVERY DOOR ASSEMBLY ((3) HEX NUTS-8800956)	

AR – As required



## ADA DELIVERY LIFT ASSEMBLY (SN < 1380575)



### (1216062.240) ADA DELIVERY LIFT INSTALL KIT PARTS

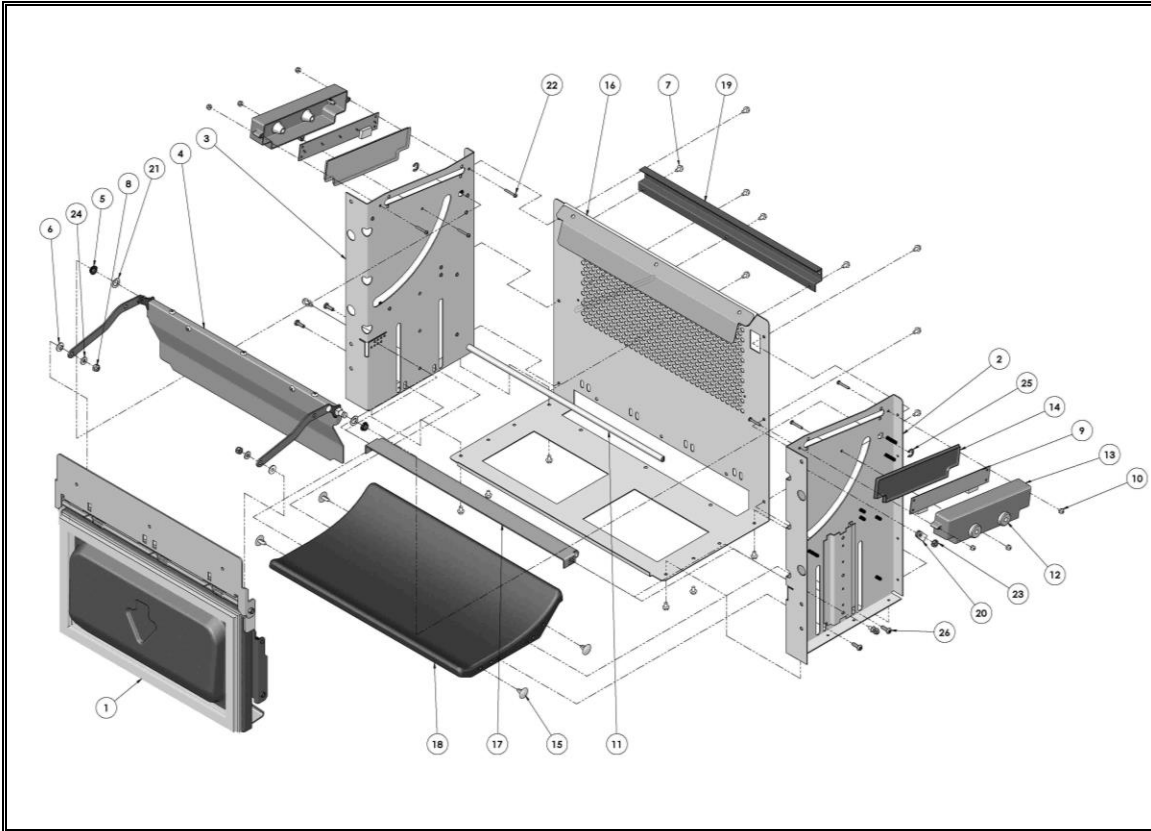
ITEM NO.	PART NUMBER	QTY	DESCRIPTION	(PARTS NEEDED FOR INSTALL)
1	4220773	1	BELT TIE BRACKET	
2	4220775	1	GUIDE ROLLER	
3	4220770	1	ROLLER	
4	1218653	1	DELIVERY BOX BOTTOM	
5	4220717	1	STEPPER MOTOR	
6	4221183	1	3/16 PUSH NUT	

#### PARTS NOT SHOWN BELOW

7	4220771	1	LIFT BELT	
8	4220772	1	WEIGHT PLATE	
9	4221227.002	1	POWER SUPPLY	
10	4221748	1	DELIVERY SWITCH HARNESS	
11	4219726.002	1	MOMENTARY PUSH BUTTON SWITCH-BLUE	
12	4220471	1	HANDICAP LABEL	

AR – As required

## ADA DELIVERY BOX ASSEMBLY (SN ≥ 1380575)



**(1219617 ADA READY WITHOUT LIFT MECHANISM)**

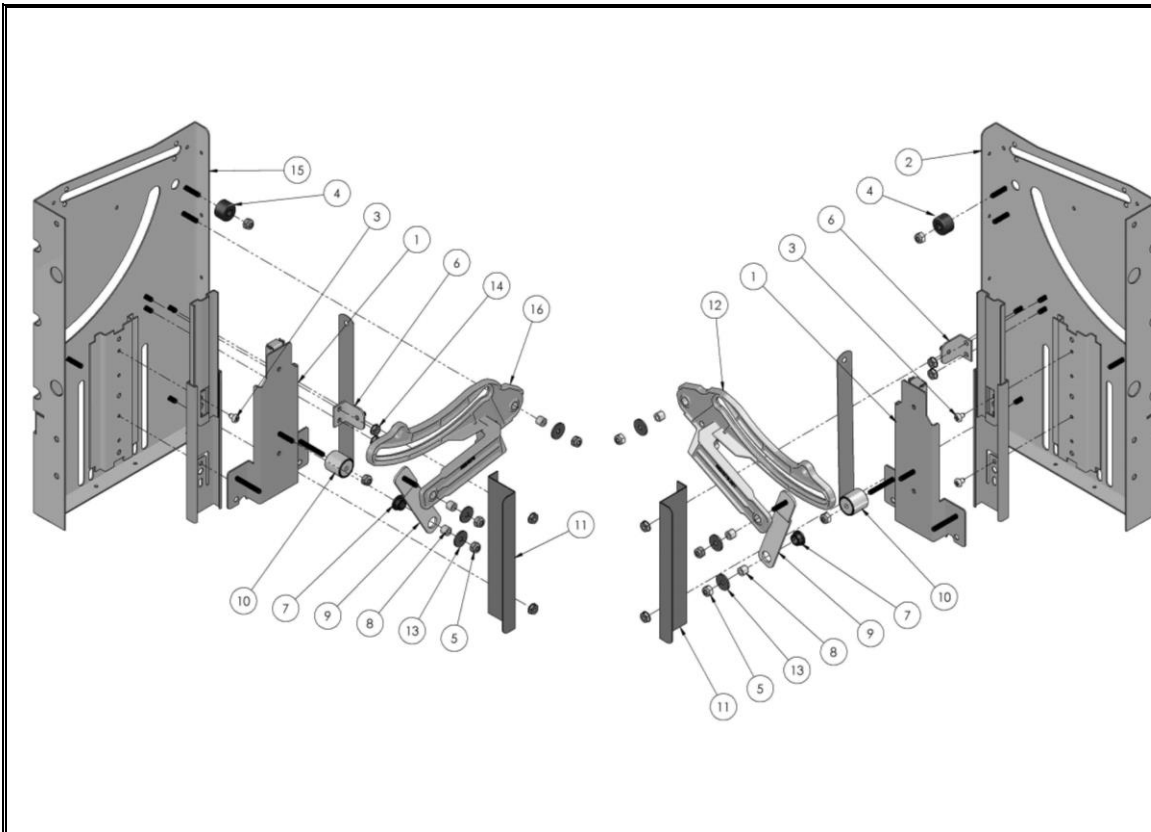
**(1219617.001 WITH LIFT MECHANISM)**

ITEM NO.	PART NUMBER	QTY	DESCRIPTION	(PARTS NEEDED FOR INSTALL)
1	1219618	1	DELIVERY DOOR ASSY	
2	1219686	1	DELIVERY LIFT SIDE	
3	1219686.001	1	DELIVERY LIFT SIDE	
4	1219622	1	BACK ANTI-CHEAT ASSY	
5	4025263.001	2	SNAP-IN NYLON BEARING	
6	4030100.001	2	SPACER BUSHING	
7	4050420.001	19	8-18X3/8 PHIL PH TY-A/BLK	
8	4210384	2	#8 HEX NYLOCK NUT	
9	4212464	1	DELIVERY SENSOR	
10	4215208	6	#4-40 HEX NYLON INSERT LOCK NUT	
11	4215365	1	D-GASKET	
12	4216201	4	GROMMET	
13	4217231	2	I-VEND BOX	
14	4217232	2	I-VEND BOX COVER	
15	4223153	4	ARROW CLIP (0.625 X .100)	
16	4224075	1	DELIVERY WRAPPER BACK	
17	4224077	1	DOOR OPENING ANTICHEAT	
18	4224080	1	DELIVERY BOX FLOOR	
19	4224082	1	IVEND HARNESS COVER	

AR – As required

20	8324099.1	1	3/8 X 3/16 CLAMP
21	8324353	2	5/16 ID FLAT WASHER
22	8800029	6	4-40X3/4 PHIL PH MS
23	8800956	1	8-32 HEX NUT W/ETW
24	8801011	2	#8 FLAT WASHER
25	8801080	2	E-RING
26	8800636	4	8-18 X 1/2 PH PHIL TY-B

**DELIVERY LIFT MECHANISM SIDE ASSY**  
**1219686 (L) & 1219686.001 (R)**



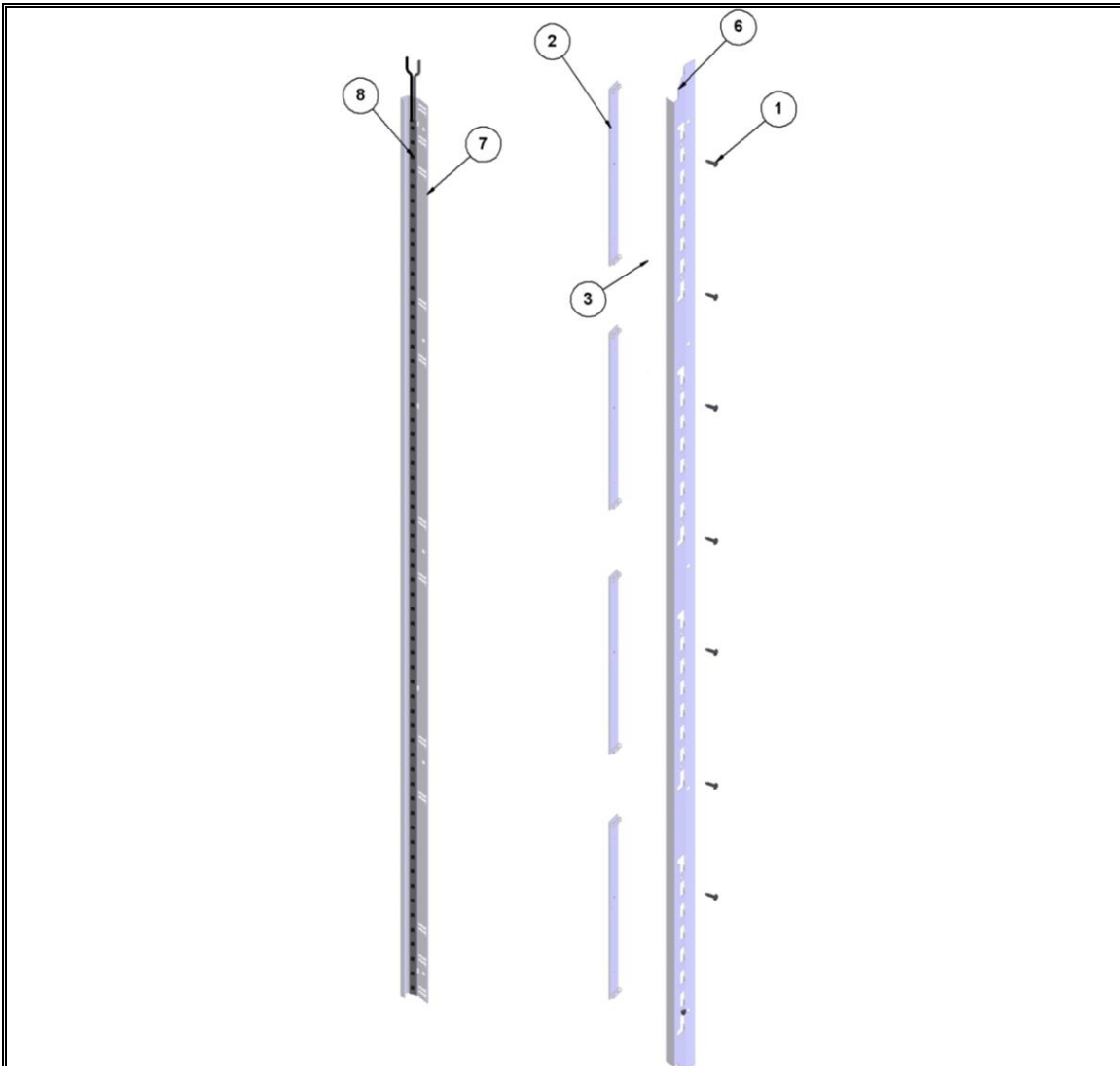
AR – As required

**(ADA MECHANICAL LIFT SIDE ASSY)**

ITEM NO.	PART NUMBER	QTY	DESCRIPTION	(PARTS NEEDED FOR INSTALL)
1	1219581	2	SLIDE & FLOOR LIFT BRACKET WELD	
2	1219621.001	1	DELIVERY SIDE WELD (LH)	
3	4050212	2	8-32X1/4 PHIL PH TYP 23 ZN	
4	4208230	1	BUMPER	
5	4210384	5	#8 HEX LOCK NUT	
6	4221640.001	1	FLOOR SPRING HOLDER STAKE ASSY	
7	4223161	1	FLANGE BEARING 5/16	
8	4223585.250	3	ID.166XOD.312X.250L SPACER	
9	4223399.001	1	LINK FLOOR LIFT STAKE ASSY	
10	4223799.001	1	CF SPRING & SPOOL ASSEMBLY	
11	4223947	1	CF SPRING COVER	
12	4224079.001	1	PIVOT LINK (RH)	
13	4224192	3	WASHER .625OD X .175ID X .062	
14	8800956	4	8-32 HEX NUT W/ETW	
15	1219621	1	DELIVERY SIDE WELD (RH)	
16	4224079	1	PIVOT LINK (LH)	

AR – As required

**LED SIDE ASSEMBLY (TWO TYPES: 12DC STRIP & 24VAC ENGINE)**

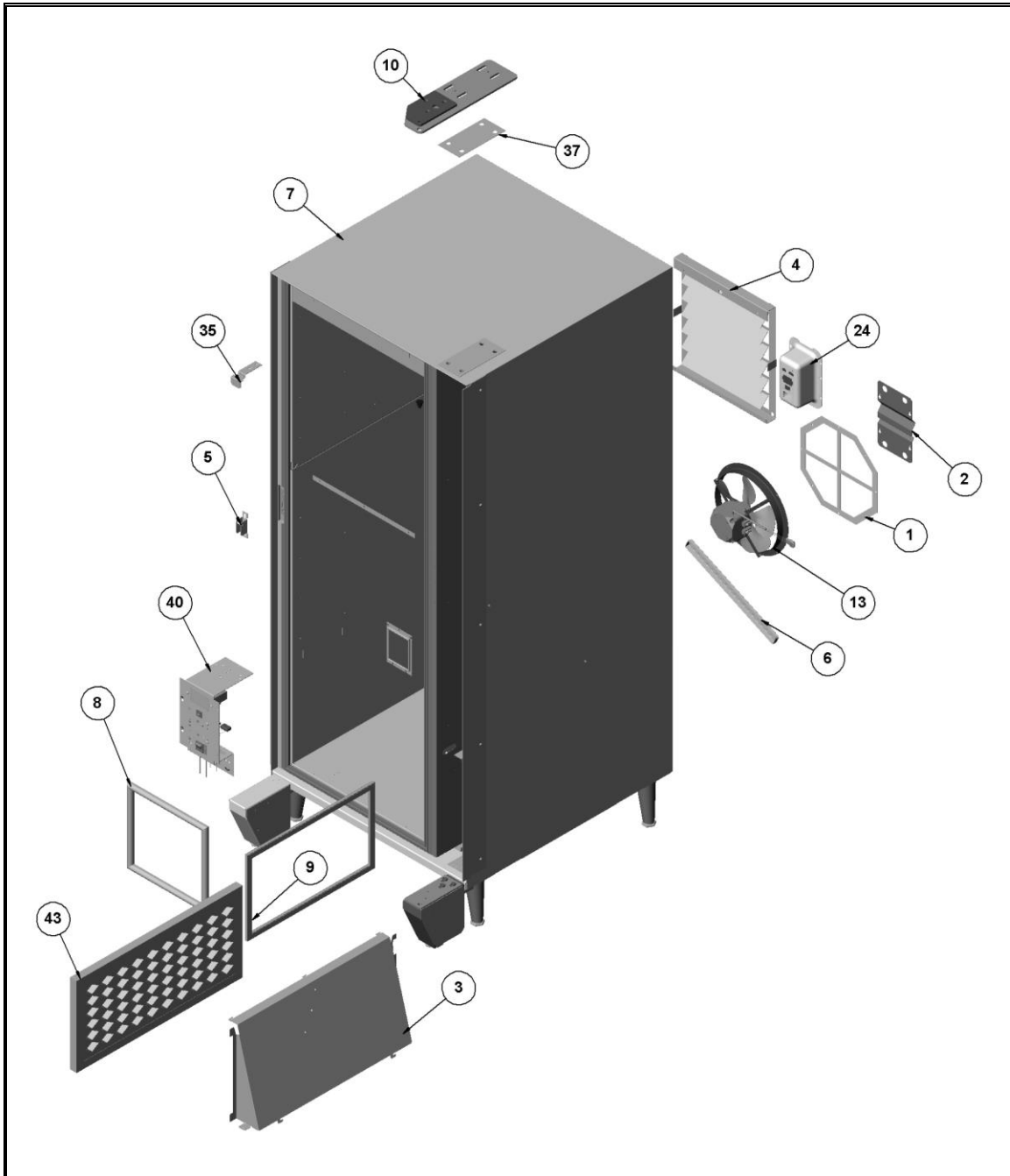


**(CHANGED FROM 24VAC ENGINES TO 12 DC STRIP LED'S ON SN 1347719)**

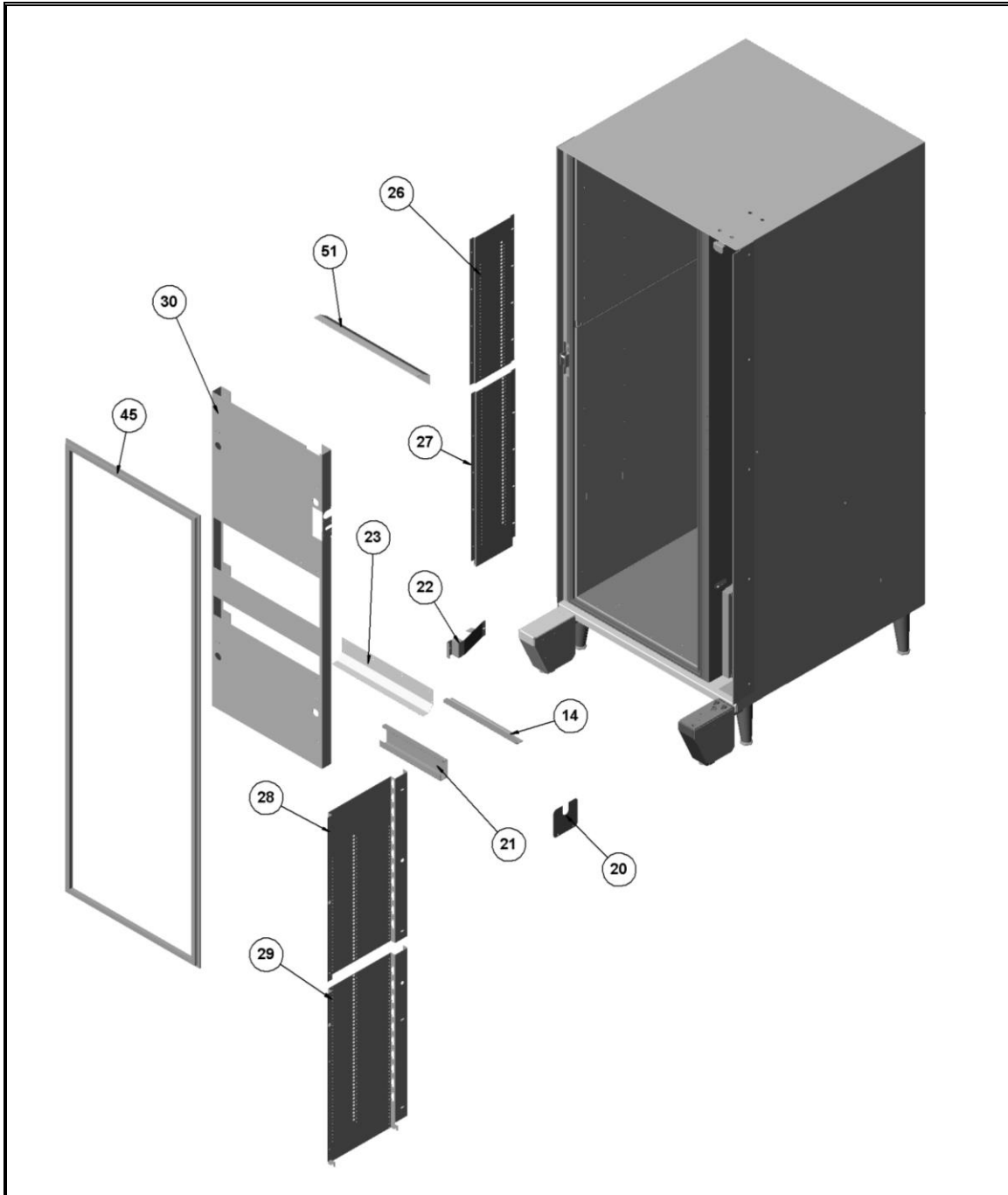
ITEM NO.	PART NUMBER	QTY	DESCRIPTION	(PARTS NEEDED FOR INSTALL)
1	4215561.014	8	SNAP RIVET BLACK 1/8	
2	4216544	4	LED LIGHT ENGINE (24 VAC)	
3	4216676	8	NYLON SPACER	
4	4216544	6	20 GA WIRE/BLACK-3.75"	
5	4216691	4	TAB WIRE ASSEMBLY	
6	4216693.004	2	LED ENGINE MOUNTING BRACKET (R & L SAME)	
7	4220996	2	LED STRIP MOUNTING BRACKET (R & L SAME)	
8L	4220902.005	1	STRIP LED LEFT (12VDC)	
8R	4220902.006	1	STRIP LED RIGHT (12VDC)	

AR – As required

## CABINET ASSEMBLY



AR – As required



### 3CABINET ASSEMBLY PARTS LIST

ITEM NO.	PART NUMBER	QTY	DESCRIPTION
1	1219173	1	SCREEN WELD ASSEMBLY
2	4213448	1	CONNECTION BOX COVER
3	4218102	1	INTAKE HOOD FILTER RACK ASSEMBLY
4	4215819	1	EXHAUST LOUVER

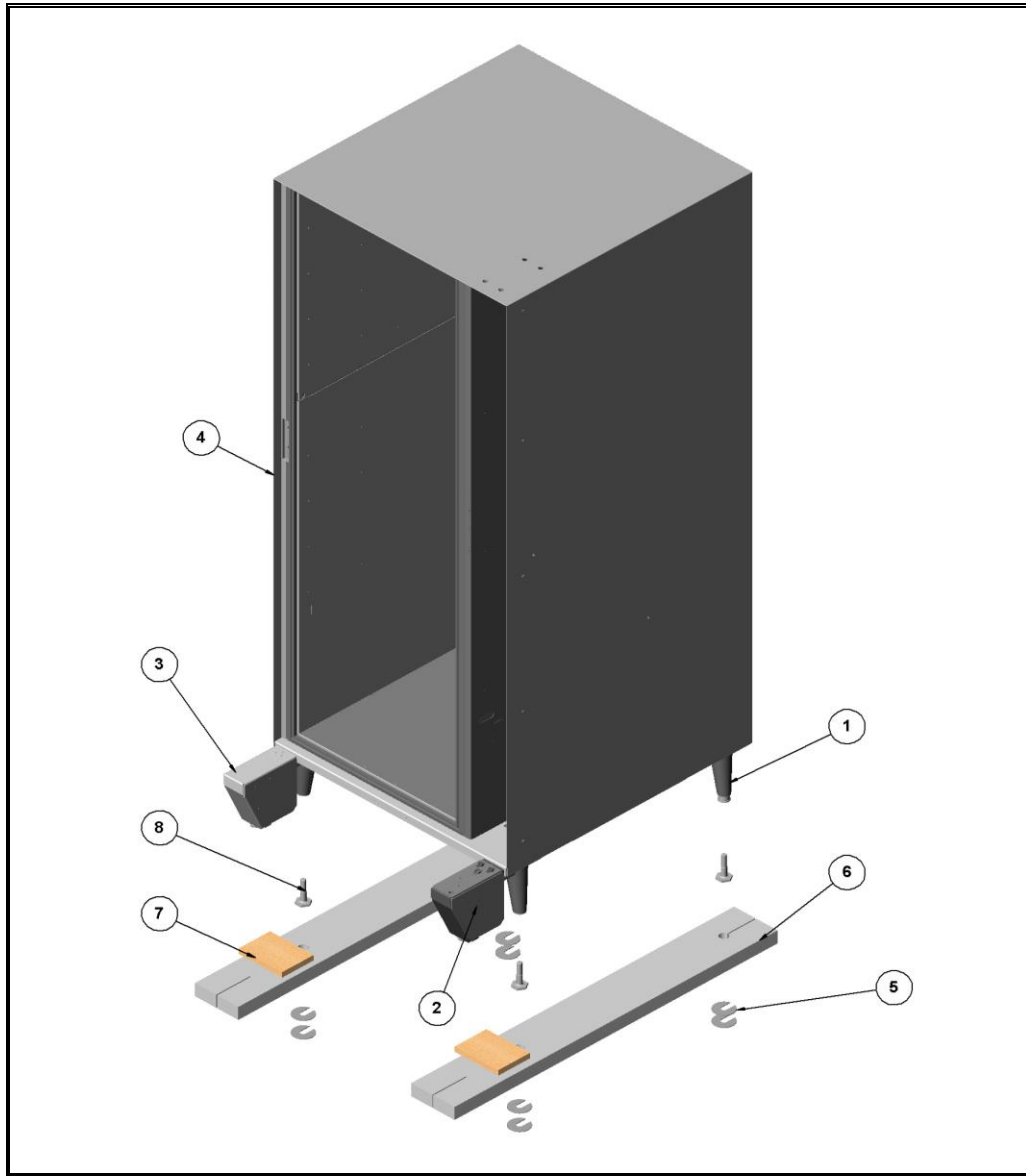
AR – As required

ITEM NO.	PART NUMBER	QTY	DESCRIPTION
5	1218000	1	LATCH MOUNT ASSEMBLY
6	4222434	1	CONDENSER FAN HARNESS COVER
7	1217619	1	CABINET FOAM ASSEMBLY
8	4219106	1	REAR REFRIGERATION MODULE CABINET GASKET
9	4219106.001	1	SIDE REFRIGERATION MODULE CABINET GASKET
10	1216660	1	TOP HINGE ASSEMBLY ((4)- 8810013 & (4)- 8810015)
11	4050423.001	10	8-18 x 1/2 PHIL PH TY-A
12	4050423	25	8-18 x 1/2 PHIL PH TY-A/BLK
13	1216861	1	CONDENSER FAN ASSEMBLY ( <a href="#">SEE PAGE #17</a> )
14	4215061	1	MODULE RETAINING BRACKET
15	4213628	1	EMI SUPPRESSOR - SPLIT FERRITE SHIELD BEAD
16	4214006	2	HARNESS INSULATION BLOCK
17	4214270	1	BACK RAIL SUPPORT-LEFT
18	4214271	1	BACK RAIL SUPPORT - RIGHT
19	4215909	1	OPEN P-CLAMP
20	4214768	1	HARNESS OPENING COVER
21	4215060	1	MODULE FRONT HOLD DOWN
22	4215279	1	MODULE POSITIONING WEDGE
23	4215799	1	AIR BAFFLE BACK
24	4216393	1	CONNECTION BOX
25	4218218	1	REAR MODULE POSITIONING WEDGE
26	4217115	1	LEFT RAIL SUPPORT TOP
27	4217116	1	LEFT RAIL SUPPORT BOTTOM
28	4217917	1	RT FRONT RAIL MOUNT (HCT1)
29	4217918	1	RT FRONT RAIL MOUNT (HCT1)
30	4218080	1	AIR DUCT
31	8361468	1	SPRING-BAR RETURN
32	8800952	2	10-32 HEX NUT W/ETW
33	4217063	2	HANDLE HOOK PLATE
34	4217120	4	SIDE PANEL SHIM PLATE
35	4217698	1	DOOR SWITCH ACTIVATOR
36	4211555	AR	BEVELED FOAM GASKET
37	4214306	3	TOP HINGE SHIM
38	8810013	4	5/16-18x1 CARR. BOLT
39	8810015	8	5/16-18 FLANGE LK NUT
40	1217694.012	1	POWER BOX ASSY ( <a href="#">SEE PAGE #18</a> )
41	4217633	1	HINGE SIDE ANTI-CHEAT
42	4218523	1	LATCH SIDE ANTI-CHEAT
43	4218114	1	AIR FILTER (12 x 25 x 1)
44	7250135.01	1	HOLE PLUG, BP-1 1/4"
45	4218643	1	MAGNETIC DOOR GASKET
46	4217298	1	HEATED GLASS POWER HARNESS
47	4212490.002	1	RFI FILTER IEC SOCKET 10AMP
48	4213784	1	PUSH BUTTON WIRE TIE
49	4217293	1	TEMP SENSOR HARNESS
50	4217294	1	CABINET CONTROL HARNESS
51	4217124	1	AIR DEFLECTOR
52	4214684	1	TEMP SENSOR ASSY
53	4218519	1	POWER HARNESS (FROM RFI TO POWER BOX)
54	4218520	1	HEATER WIRE JUNCTION CONN
55	4217919	1	MOTOR MATRIX/CABINET HARNESS
56	4213759.007	1	14 AWG POWER CORD (NEEDS 4213628 ON IT)

AR – As required



## CABINET SUB ASSEMBLY

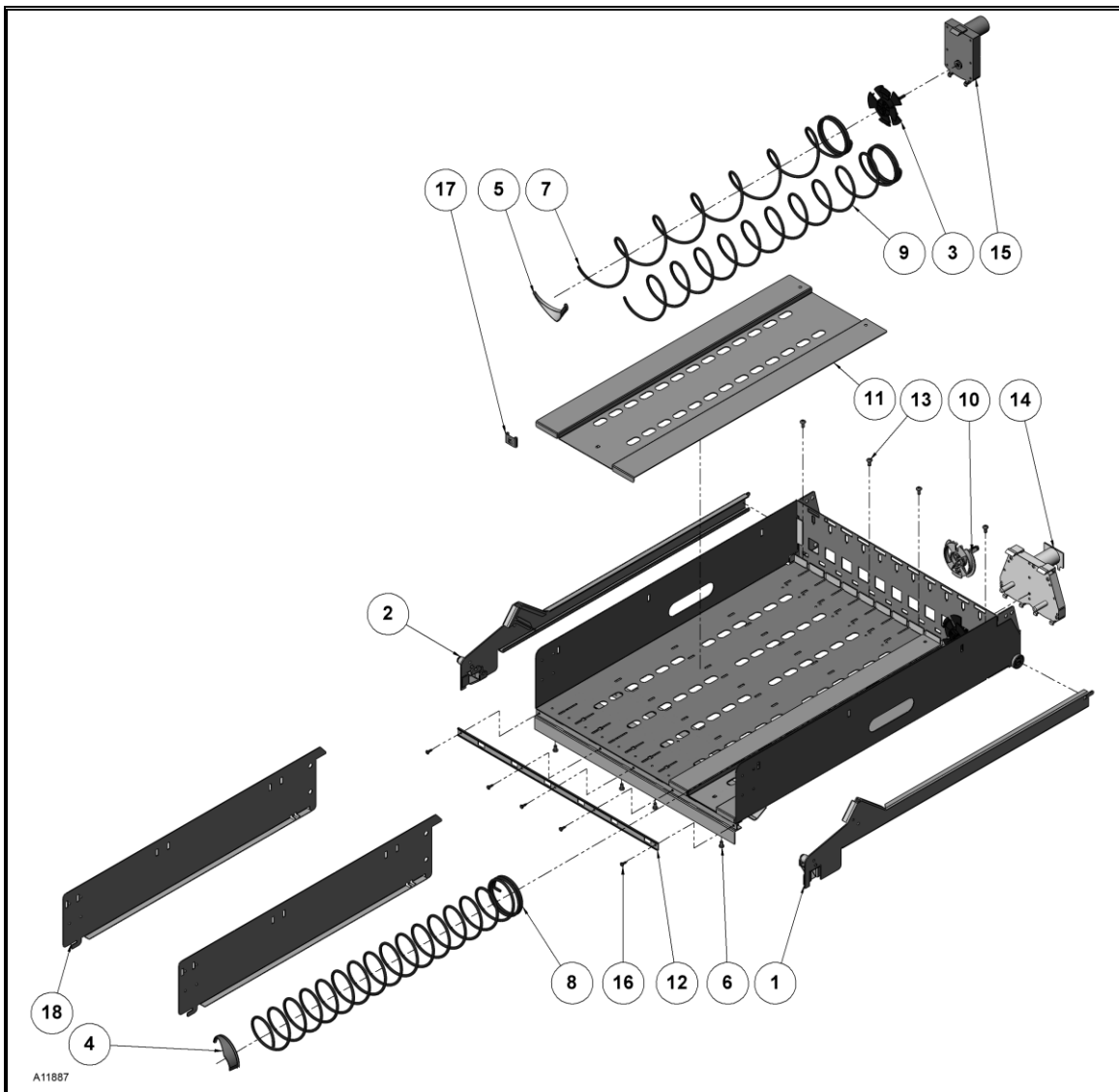


### CABINET SUB ASSEMBLY PARTS LIST

ITEM NO.	PART NUMBER	QTY.	DESCRIPTION
1	1214704.001	4	LEG ASSEMBLY
2	1218308	1	LEG EXTENSION ASSEMBLY
3	1218308.001	1	LEG EXTENSION ASSEMBLY
4	1217619	1	CABINET FOAM ASSEMBLY
5	4009927	8	LEG LEVELER WASHER
6	4219003	2	SKID BOARD
7	4221473	2	SHIPPING PLYWOOD LEG SUPPORT
8	4219208	4	LEG LEVELER

AR – As required

## MZF TRAY ASSEMBLY



### (1217778) MZF TRAY ASSEMBLY PARTS LIST

ITEM NO.	PART NUMBER	QTY	DESCRIPTION
1	1215925	6	RAIL ASSY LONG RIGHT
2	1215925.001	6	RAIL ASSY LONG RIGHT
3	4209502	AR	AUGER COUPLING SPLINE
4	4025748	AR	PRODUCT EJECTORS-CCW-BLACK
5	4025748.002	AR	PRODUCT EJECTOR-CW-BLACK
6	4050423.001	24	8-18 x 1/2 PHIL PH TY-A
7	4200272.106	AR	AUGER - PRODUCT
8	4200272.100	AR	AUGER - PRODUCT
9	4200272.131	AR	AUGER - PRODUCT
10	4216378	1	SPIRAL ADAPTER SQUARE SHAFT SNAP-IN
11	4217504	1	DUAL HELIX RETAINER

AR – As required

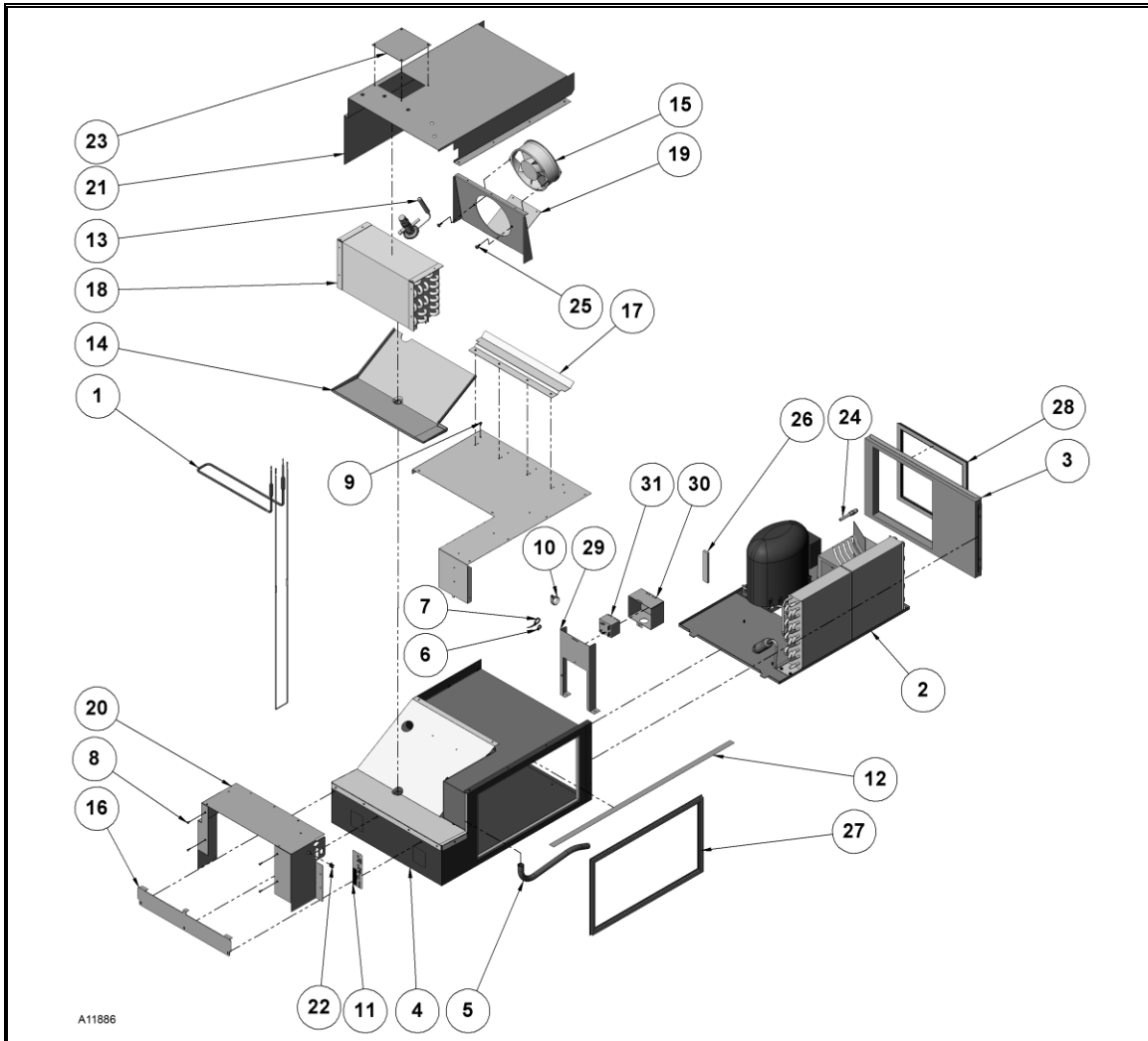
ITEM NO.	PART NUMBER	QTY	DESCRIPTION
12	4217748	6	LABEL HOLDER
13	8800638	AR	10-16 x 3/8 PHL PH TYPE
14	4210392.002	4	DUAL HELIX MOTOR
15	4212380	1	24 VDC MOTOR – SPLINE CCW
16	4215561.019	30	SNAP RIVET/BLACK 1/8
17	4217475.003	AR	PRICE SCROLL
18	4209261.001	AR	TRAY DIVIDER

**LIST OF PARTS NOT SHOWN**

19	4060638	AR	PLASTIC BAG- KEYS
20	4217483	AR	SELECTION IDENTIFICATION SHEET
21	4214343	AR	TRAY HARNESS 3W
22	4221297	AR	24 VDC MOTOR-SPLINE CW

AR – As required

## REFRIGERATION MODULE ASSEMBLY



### (1217671) REFRIGERATION MODULE ASSEMBLY PARTS LIST

ITEM NO.	PART NUMBER	QTY	DESCRIPTION
1	1217673	1	EVAPORATOR DEFROST HEATER / DRAIN TUBE HTR
2	1217702	1	REFER BASE ASSEMBLY
3	1218016	1	REFER BACK COVER ASSY
4	1218108	1	MODULE-FOAMED
5	4025410.5	AR	MAYON TUBING GRAY
6	4033704	5	CABLE TIE 5.6
7	4033712	4	CABLE TIE 7 3/8
8	4050180	18	8-18 x 1/2 PHIL PH
9	4050420	20	8-18 x 1/4 PHIL HWH TY
10	4060134	1	PLASTIC WIRE CLAMP 1"
11	4205507.33	1	REFER LABEL
12	4208565	AR	3/4" DOUBLE FACED TAPE
13	4211911	1	EXPANSION VALVE
14	4214818	1	EVAPORATOR DRAIN PAN
15	4214996	1	FAN/MOTOR

AR – As required

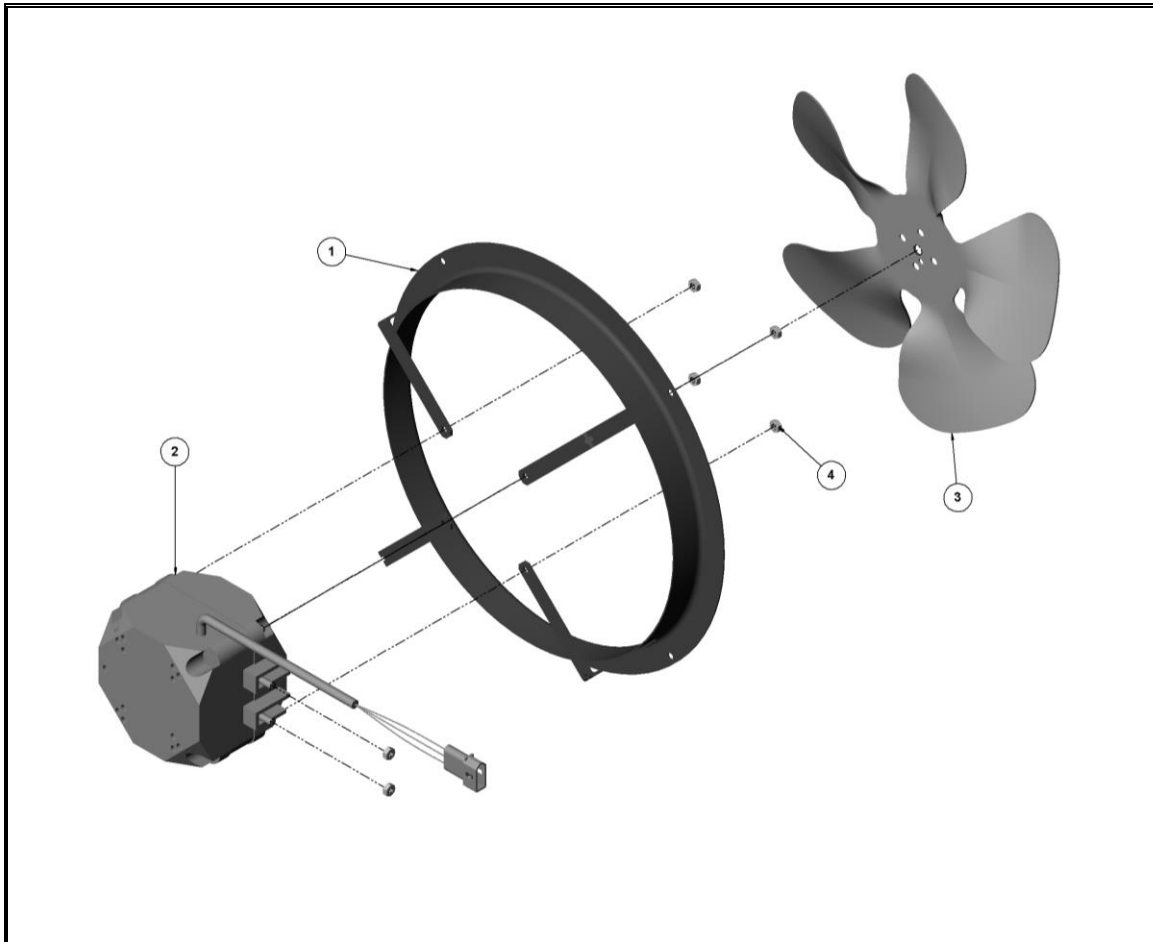
16	4215113	1	EVAP DRAIN PAN HOLDER
17	4215798	1	AIR BAFFLE FRONT
18	4217081	1	EVAPORATOR
19	4217300	1	FAN MOUNT
20	4217301	1	EVAPORATOR MOUNT
21	4217302	1	EVAPORATOR AIR DUCT
22	4217545	1	1/8" DIAMETER STRAIN RELIEF
23	4218442	1	COVER EXPANSION VALVE
24	4218564	1	SCHRADER VALVE
25	8800833	2	10-24 x 1/2 PHIL TH W/ETW
26	4202255	AR	GASKET 1/4 x3/4 W/ADHESIVE
27	4218654.001	1	REFER MODULE GASKET (PRE-AUGUST 2010 MACHINES)
28	4218654	1	REFER MODULE GASKET (PRE-AUGUST 2010 MACHINES)
29	4218854	1	RELAY ENCLOSURE
30	4218855	1	RELAY COVER MOUNT
31	4217517	1	RELAY

**LIST OF PARTS NOT SHOWN**

32	R.3994	AR	SEAL-MASTIC PERMAGUM
33	4206366.005	1	INSUL TUBING
34	4212649.002	1	ALUMINUM TAPE
35	4213044	1	SIGHT GLASS REFER
36	4214684	1	TEMP SENSOR ASSY
37	4215209	1	JUMPER WIRES
38	4218501	1	REFER HARNESS (COND. FAN CONNECTION)
	4222641	1	REFER HARNESS (NO COND. FAN CONNECTION)
39	4214683	1	U – CLIP
40	7332492	1	DECAL WARNING WARRANTY
41	4217518	1	START CAPACITOR
42	4217519	1	THERMAL OVERLOAD
43	4223932	1	RUN CAPACITOR

AR – As required

## CONDENSER FAN ASSEMBLY



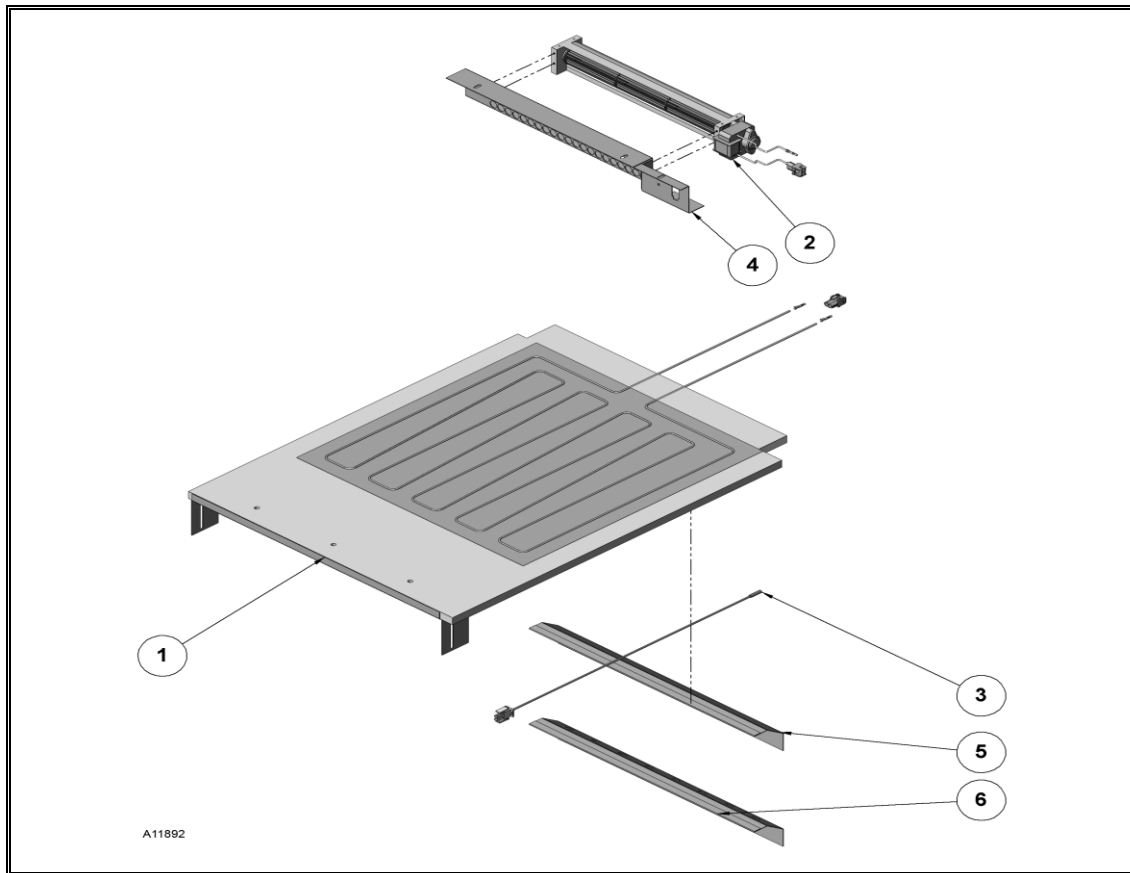
### (1216861.XXX) ASSEMBLY PARTS LIST

ITEM NO.	PART NUMBER	QTY	DESCRIPTION
1	4214778	1	VENTURI RING
2	4214798	1	MOTOR (STANDARD EFF.)
3	4222731	1	FAN BLADE
4	4215271	6	M4 HEX LOCK NUT

ASSEMBLY #	VAC	MOTOR (ITEM # 2)	NOTES
1216861	110	4214798	STANDARD EFF.
1216861.001	230	4214798.001	STANDARD EFF.
1216861.002	110	4221296.002	HIGH EFF.
1216861.003	230	4221296.003	HIGH EFF.
1216861.004	110	4221296.006	HIGH EFF. ROS*
1216861.005	220	4221296.007	HIGH EFF. ROS*

AR – As required

## MZF INSTALL ASSEMBLY KIT



### (INSTALL KIT P/N 1216062.181 (115V) PARTS LIST

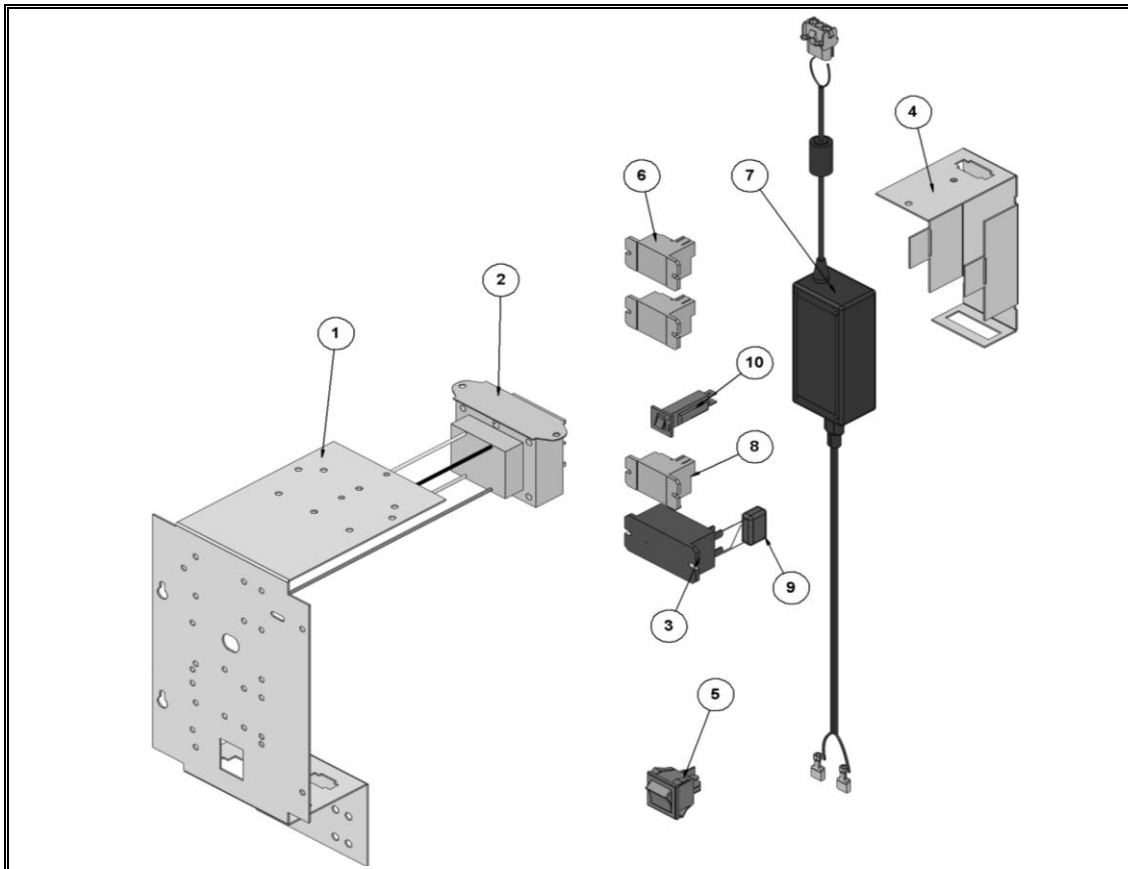
ITEM NO.	PART NUMBER	QTY	DESCRIPTION
1	1217723	1	INSULATION BARRIER
2	4214257	1	CROSS FLOW BLOWER
3	4214684	1	TEMP SENSOR ASSY
4	4216175	1	UPPER BLOWER MOUNT
5	4217124	1	AIR DEFLECTOR
6	4217124.001	1	AIR DEFLECTOR (GOES BETWEEN 4 <sup>TH</sup> AND 5 <sup>TH</sup> TRAY)

#### LIST OF PARTS NOT SHOWN

7	4217521	1	UPPER BLOWER & HEATER HARNESS
8	4217526	1	COLD/FROZEN FOOD IDENTIFICATION
9	4217554	1	DECAL MZF DIVIDER
10	4217269	1	TRAY SUPPORT SHIM PLATE
11	4217271	1	TRAY GAP CURTAIN
12	4218485	2	MZF SIDE PANEL DECAL
13	4201942	5	6-20X3/16 PHL SCREWS
14	R.3994	3	PERMAGUM
15	4050420.001	14	8/18x1/4 PHIL SCREW

AR – As required

## POWER PANEL ASSEMBLY



### (1217694.012) POWER PANEL PARTS LIST

ITEM NO.	PART NUMBER	QTY	DESCRIPTION
1	4218777	1	POWER BOX SHEET METAL
2	4206570.000	1	TRANSFORMER
3	4206643	1	RELAY #1- (COMPRESSOR RELAY)
4	4221934	1	LED POWER SUPPLY MOUNTING BRACKET
5	4213627	1	POWER SWITCH
6	4216013	2	RELAY #2 & #4 (DOOR INTERLOCK & TOP ZONE HTR)
7	4219620	1	LED POWER SUPPLY 12VDC
8	4216690	1	RELAY #3 (DEFROST HTR / EVAP FAN)
9	1216357	1	ARC SUPPRESSOR SNUBBER
10	4203467.003	1	3 AMP CIRCUIT BREAKER

#### LIST OF PARTS NOT SHOWN

11	4217295	1	POWER PANEL SECONDARY HARNESS
12	4217516	1	POWER PANEL PRIMARY HARNESS
13	4221227.001	1	ADA LIFT POWER SUPPLY MAINS JUMPER
14	422072	1	LED POWER SUPPLY MAINS JUMPER
15	4222642	1	CONDENSER FAN HARNESS

AR – As required







*The contents of this publication are presented for informational purposes only, and while every effort has been made to ensure their accuracy, they are not to be construed as warranties or guarantees, express or implied, regarding the products or services described herein or their use or applicability. We reserve the right to modify or improve the designs or specifications of such products at any time without notice.*

**VendNet™**  
165 North 10th Street  
Waukee, Iowa 50263  
United States of America



	USA & Canada	International
	Service	<b>(800) 833-4411</b>
Parts	<b>(888) 259-9965</b>	
Email	<b>vendnet@vendnetusa.com</b>	
Web Site	<b>www.vendnetusa.com</b>	