



CD-6 Satellite Can Drink Machine



Model 3038-51

**PARTS
MANUAL**

TABLE OF CONTENTS

| | |
|-----------------------------------|--|
| GENERAL INFORMATION..... 1 | CABINET ASSEMBLY8 |
| FINAL ASSEMBLY..... 2 | Complete Can Rack Assembly 10 |
| DOOR ASSEMBLY 4 | Lower Ejector Mechanism..... 12 |
| Inner Door Assembly..... 6 | Upper Ejector Mechanism..... 12 |
| | REFRIGERATION ASSEMBLY 14 |
| | Evaporator Assembly..... 16 |

KEY

| | | |
|-------------------|---------------------------|---------------------------|
| 24V 24 Volt | ETW External Lock Washer | VDC Volt – Direct Current |
| 115V 115 Volt AC | HWH Hex Washer Head Screw | W/ With |
| 230V 230 Volt AC | MS Machine Screw | W/O Without |
| AP Attaching Part | PH Pan Head Screw | |
| CC Commodity Code | TH Truss Head Screw | |

COMMODITY CODES

| | |
|----------------------------|------------------------------------|
| AS Assembly | RU Rubber |
| BU Bushing | SC Fastener |
| CB Control Board | SF Sign Face |
| CL Clip | SL Slide |
| CO Compressor | SM Screw-Machine |
| CP Clamp | SP Spring, Auger |
| EL Electrical Component | ST Stamping, Bracket |
| FA Fan | SW Switch |
| FU Fuse, Breaker | TA Tape |
| GA Gasket | TC Temperature Control, Thermostat |
| GR Grommet | TU Tubing |
| HA Harness | WA Washer |
| HI Hinge | WD Wood |
| IN Insulation | WE Welded Assembly |
| LA Label, Tag | WT Wire Tie |
| LE Leg, Leveler | XF Transformer, Ballast |
| LO Lock | |
| LP Lamp | |
| MA Manual | |
| NU Nut | |
| PI Pin | |
| PL Plastics | |
| RA Rails | |
| RC Refrigeration Component | |
| RE Relay | |
| RI Rivet | |

GENERAL INFORMATION

You may order parts from your distributor or from VendNet™. If you have any questions when placing your order, please call and we'll assist you. Please provide the following information when placing your order:

- Quantity Required
- Part Number
- Description of part

NOTE

When "Right" and "Left" are used with a part name, it is taken to mean that the person is facing the machine with the door closed.

- Vendor Model Number
- Vendor Serial Number
- Shipping and Billing Address
- Preferred Method of Shipment
- Customer Account Number

You may wish to inquire on prices of parts and minimum order amount at the time of your order. If you order less than the minimum, please check our catalog for other parts you may require to bring your order up to the minimum amount.

VendNet™ reserves the right to change these requirements without notice.

Payment

OPEN ACCOUNT with approved credit.

MASTER CARD – VISA – DISCOVER – C.O.D.

To Order by Mail

You may place your order for parts by providing the necessary information as requested above, and mailing your order to:

VendNet™
165 North 10th Street
Waukee, Iowa 50263-0488

Order forms are available upon request from VendNet™, or you may use your own purchase order form.

To Order by Fax

1-515-987-4447

You may Fax your order for replacement parts by providing the necessary information as requested above to VendNet™.

To Order by Phone

USA 1-800-833-4411
Canada 1-800-858-4730
Other locations 1-515-274-3641

You may call in your order for replacement parts. Ask for VendNet™ Parts Department. Please provide the necessary information, as requested above, to allow us to provide you with prompt courteous service.

Returns

RE STOCKING CHARGE 20%. A restocking charge of 20% will apply to merchandise accepted by VendNet™ for return, except items processed as warranty.

All items returned must be accompanied by a Return Form clearly stating the reason for return. Returns are to be shipped freight prepaid to VendNet™, 165 North 10th Street, Waukee, Iowa 50263-0488. (Return Forms are available upon request from VendNet™.)

Limitation of Liability

VendNet™ shall not be liable for any injury, loss or damage, whether direct, incidental or consequential arising out of the use of or the inability to use any part, parts or products sold by VendNet™. The remedies of the buyer set forth herein are exclusive, and the liability of VendNet™. With respect to any contract or sale or anything done in connection herewith, whether in connection therewith, whether in contract, in tort, under any warranty, or otherwise, shall not, except as expressly provided herein, exceed the price of the part, parts or products on which such liability is based. Any statements or representations about the parts or product, other than those contained herein, do not constitute warranties and shall not be relied on by the buyer and shall have no force of effect unless contained in a written agreement signed by officers of VendNet™.

If you have any questions, check out our Website

<http://www.vendnetusa.com>

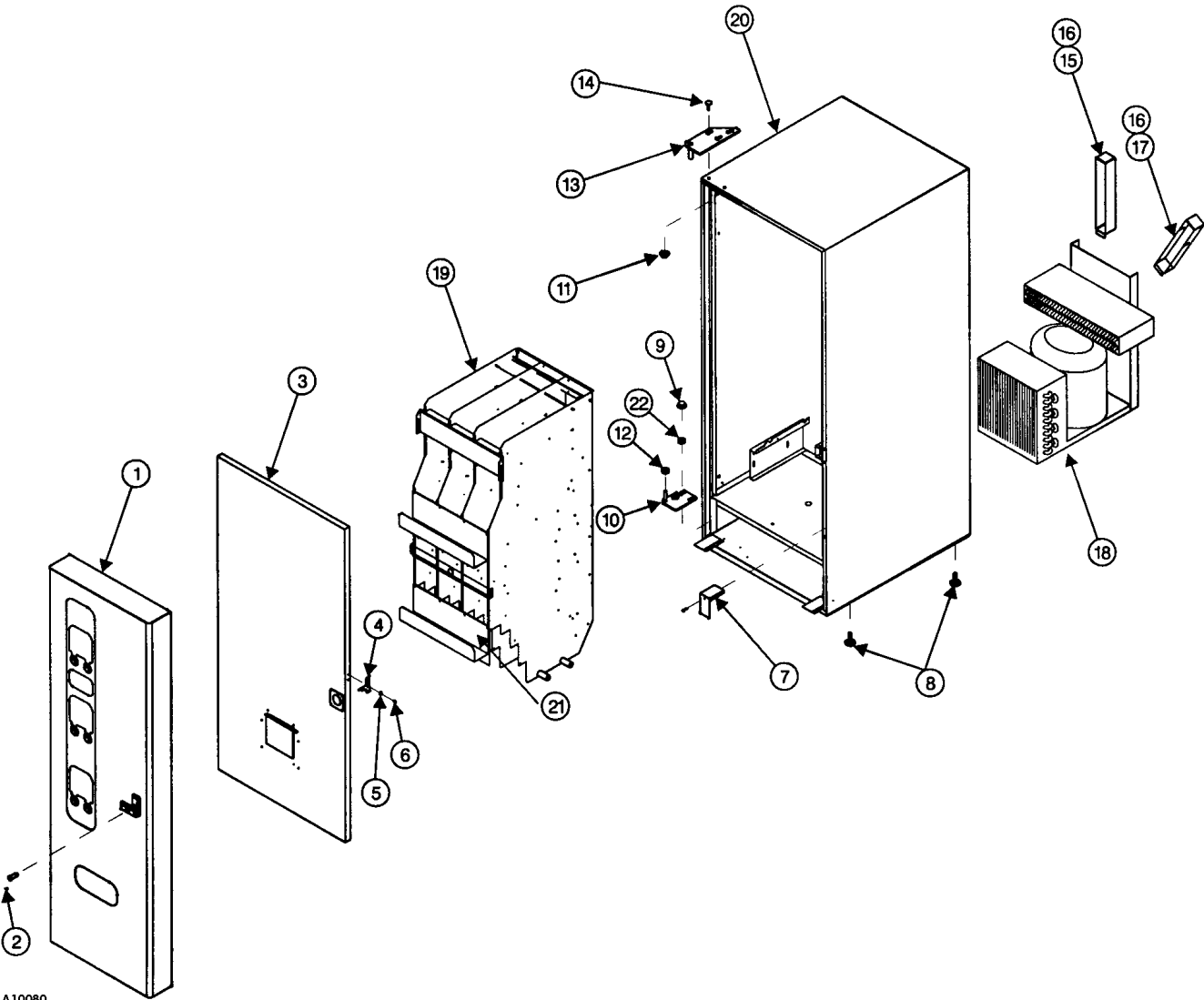
or please call VendNet™.

Ask for the Parts Department.

We will be happy to assist you.

E-Mail: vendnet@vendnetusa.com

FINAL ASSEMBLY

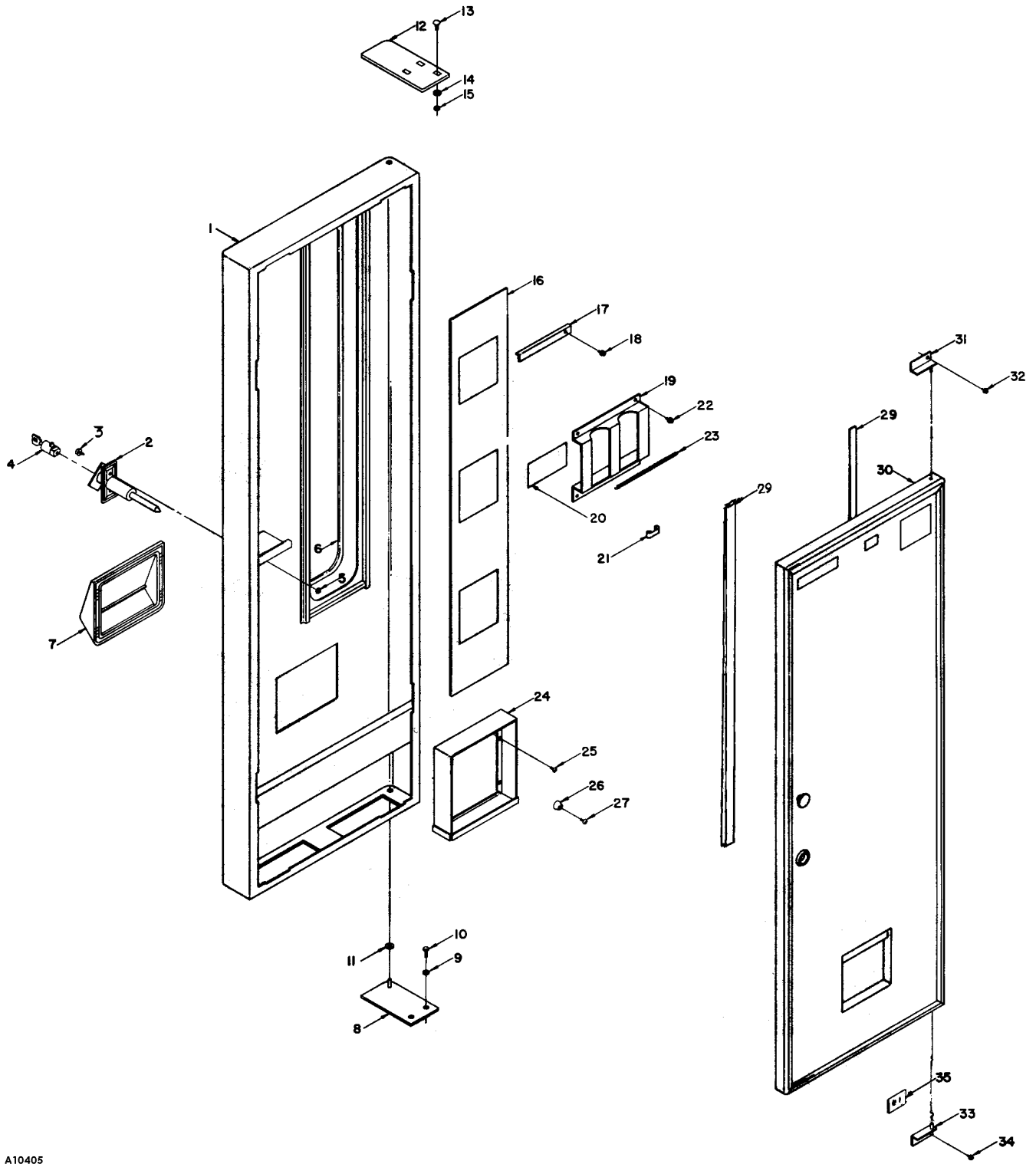


A10080

FINAL ASSEMBLY

| ITEM | PART NUMBER | QTY | DESCRIPTION | CC |
|-------|-------------|-----|--|----|
| 1 | 1212018-001 | 1 | Door Assembly – See Page 4 | AS |
| 2 | 4060330 | 1 | Lock Cylinder with Two Keys | LO |
| 3 | 1212020 | 1 | Inner Door Assembly – See Page 6 | AS |
| 4 | 4205002 | 1 | Inner Door Latch | ST |
| 5 | 4030100 | 2 | Bushing-Spacer | BU |
| 6 | 4050202 | 2 | 8-18x1/2 Phillips HWH Tek | SC |
| 7 | 4205856 | 1 | Thermostat Cover | ST |
| 8 | 4060310 | 4 | Leg Leveler | LE |
| 9 | 8801388 | 2 | 5/16-18x3/4 HWH Type-D | SC |
| 10 | 1212056-003 | 1 | Lower Hinge Stake | RA |
| 11 | 8810015 | 3 | 5/16-18 Flange Lock Nut | NU |
| 12 | 4050767 | 3 | 3/8 Flat Washer | WA |
| 13 | 1211484-003 | 1 | Upper Hinge Stake | RA |
| 14 | 4050099 | 3 | 5/16-18x3/4 Carriage Bolt (AP for Item 13) | SC |
| 15 | 4205787 | 1 | Suction Line Cover | ST |
| 16 | 4050202 | 14 | 8-18x1/2 Phillips HWH Tek (AP for Items 15, 17 and 18) | SC |
| 17 | 4205788 | 1 | Cord Cover-Satellite | ST |
| 18 | 1212326-001 | 1 | Refrigeration Assembly – See Page 14 | AS |
| 19 | 1212162-001 | | Complete Can Rack – See Page 10 | AS |
| 20 | 1212190-001 | 1 | Cabinet Assembly – See Page 8 | AS |
| 21 | 4205003 | 2 | Precool Storage Shelf | ST |
| 22 | 7186148-000 | 2 | 5/16” Split Lock Washer | WA |
| Not | 4033712 | 1 | Cable Tie 7 3/8" | WT |
| Shown | 4050665 | 4 | 1/8x1/4 Pop Rivet | RI |
| | 4206939 | 1 | Tilt Label-Back Adhesive | LA |
| | 1211495 | 1 | Service Package | AS |
| | 4203105 | 1 | Tie Plate - Bottom Weld | ST |
| | 4050241 | 4 | 8-18x 3/4 Phillips PH Type-AB (AP for Previous) | SC |
| | 4202335 | 1 | CD-6 Service Manual | MA |
| | 4203104 | 1 | Tie Plate - Top Weld | ST |
| | 4050180 | 2 | 8-18x1/2 Phillips PH Tek Plated (AP for Previous) | SC |
| | 4206816 | 1 | Safety Manual | MA |
| | 4203252 | 1 | Can Chute Anti Cheat | ST |
| | 4207074 | 1 | Installation Instructions – Anti Cheat | PR |
| | 4208066 | 1 | Anti Cheat | ST |

DOOR ASSEMBLY



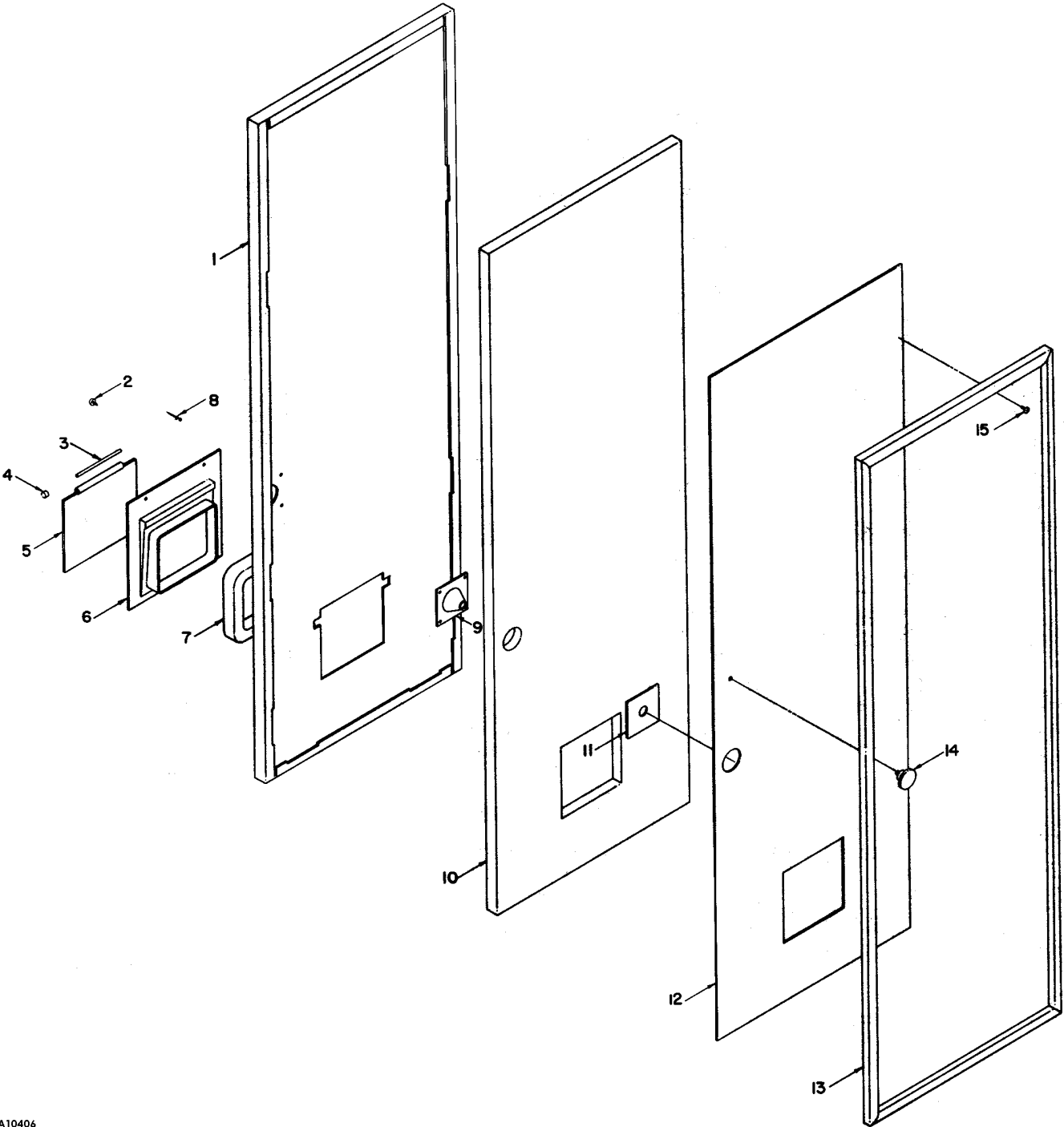
A10405

DOOR ASSEMBLY

| ITEM | PART NUMBER | QTY | DESCRIPTION | CC |
|-------|-------------|------|--|----|
| 1 | 1211425-003 | 1 | Door Weld-3038 | WE |
| 2 | 4060417-001 | 1 | T-Handle W/Lock Nut /Black Powder Coat | LO |
| 3 | 8800833 | 2 | 10-32x1/2 Phillips TH w/ETW | SC |
| 4 | 4060330 | 1 | Lock Cylinder W/2 Keys | LO |
| 5 | 8800952 | 2 | 10-32 Hex Nut W/ETW | NU |
| 6 | 4025735-900 | 8 FT | Trim-Lok - Black | PL |
| 7 | 4202207 | 1 | Delivery Trim | PL |
| 8 | 1212056-003 | 1 | Lower Hinge Stake-3038 | RA |
| 9 | 8800956 | 2 | 8-32 Hex Nut W/ETW (AP for Item 8) | NU |
| 10 | 8801388 | 2 | 5/16-18x3/4 HWH Type D (AP for Item 8) | SC |
| 11 | 4050767 | 3 | 3/8 Nylon Flat Washer (AP for Item 8) | WA |
| 12 | 1211484-003 | 1 | Upper Hinge Stake | RA |
| 13 | 4050099 | 3 | 5/16-18x3/4 Carriage Bolt (AP for Item 12) | SC |
| 14 | 7186148-000 | 2 | 5/16 Split Lock Washer Plated (AP for Item 12) | WA |
| 15 | 8810015 | 3 | 5/16-18 Flange Lock Nut (AP for Item 12) | NU |
| 16 | 4203569-004 | 1 | Display Window - 6-11/16 x 40-5/16 | SF |
| 17 | 4203092 | 2 | Window Retainer | ST |
| 18 | 4050420 | 6 | 8-18x1/4 Phillips HWH | SC |
| 19 | 4203739 | 3 | Can Mount Scroll | ST |
| 20 | 4203752 | 1 | Operating Instruction Label - English | LA |
| 21 | 4203341 | 6 | Price Scroll | LA |
| 22 | 4050420 | 12 | 8-18x1/4 Phillips HWH | SC |
| 23 | 8379539-000 | 3 | Spring-Extension | SP |
| 24 | 1211422-001 | 1 | Delivery Weld | WE |
| 25 | 4050180 | 2 | 8-18x1/2 Phillips PH Tek Plated | SC |
| 26 | 8620821 | 1 | Rubber Stopper | RU |
| 27 | 8800636 | 5 | 8-18x1/2 Phillips PH Type-B | SC |
| 29 | 4205004 | 2 | Display Window Side Retainers | ST |
| 30 | 1212020 | 1 | Inner Door Assembly - See Next Page | AS |
| 31 | 1211397-002 | 1 | Inner Hinge Weld-Top | WE |
| 32 | 4050202 | 2 | 8-18x1/2 Phillips HWH Tek | SC |
| 33 | 1211397 | 1 | Inner Hinge Weld- Bottom | WE |
| 34 | 4050202 | 2 | 8-18x1/2 Phillips HWH Tek | SC |
| 35 | 4203079 | 1 | Hinge Spacer | ST |
| Not | 4203029 | 1 | Washer-Inner Door (Used on Item 33) | WA |
| Shown | 4030100 | 2 | Bushing-Spacer – Shown on Final | BU |
| | 4201365 | 1 | Warning-Label (On Inner Door) | LA |
| | 4205002 | 1 | Inner Door Latch – Shown on Final | ST |
| | 4205382-xxx | 1 | L1 through L6 Selection Label (Used with Item 19) Specify Desired Selection | LA |

DOOR ASSEMBLY CONTINUED

Inner Door Assembly

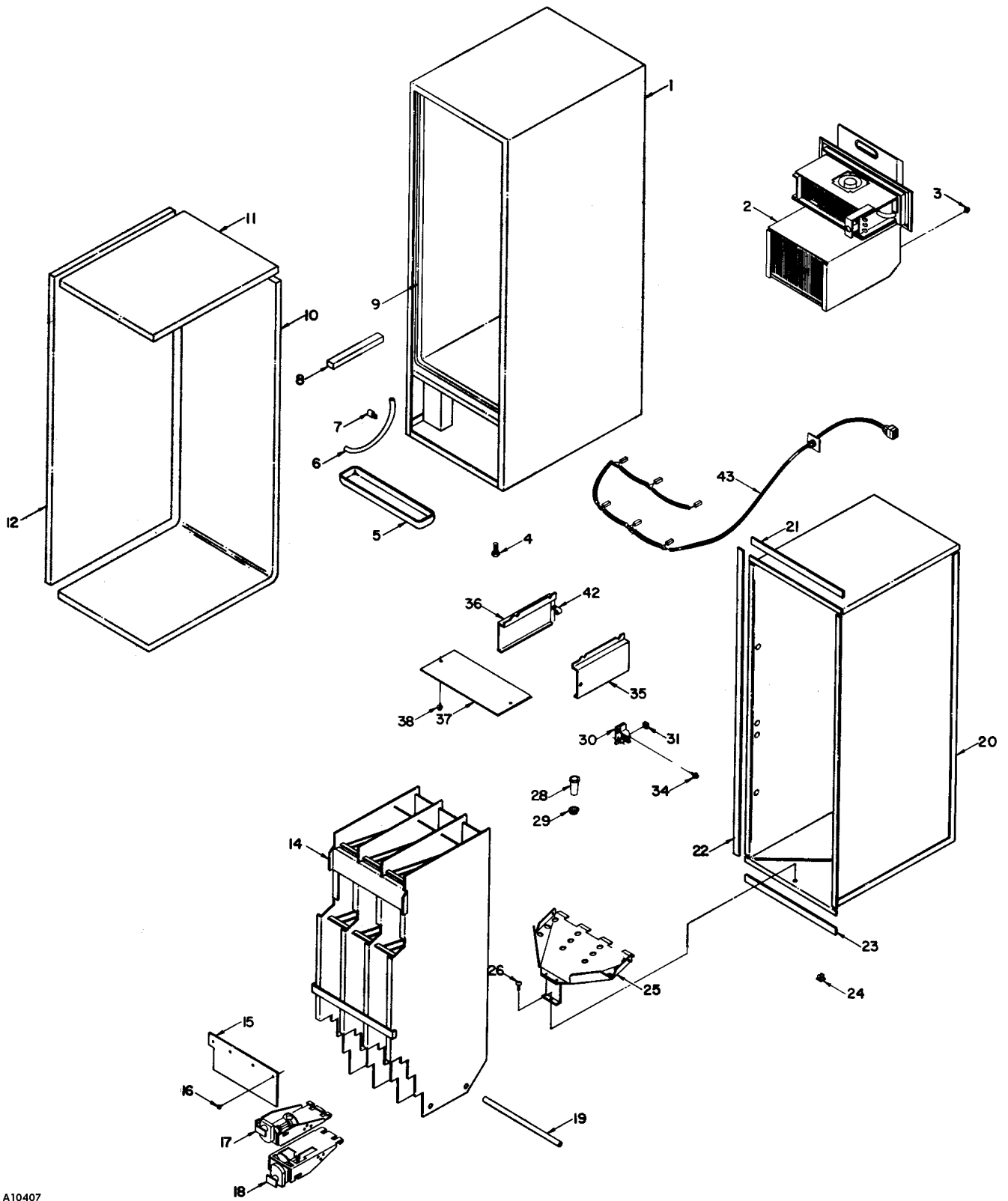


A10406

Inner Door Assembly

| ITEM | PART NUMBER | QTY | DESCRIPTION | CC |
|--------------|-------------|------|---|----|
| | 1212020 | 1 | Inner Door Assembly | AS |
| 1 | 1211423 | 1 | Inner Door Weld | WE |
| 2 | 4050240 | 1 | 8-32x3/8 Phillips PH MS | SC |
| 3 | 7200650-001 | 1 | Hinge Pin | PI |
| 4 | 7091078-000 | 2 | Tubular Speed Nut | NU |
| 5 | 7334428-001 | 1 | Vend Port Door | PL |
| 6 | 4202758 | 1 | Delivery Chute | PL |
| 7 | 4202255 | 2 FT | Gasket 1/4x3/4 W/Adhesive | GA |
| 8 | 4050667 | 4 | 1/8x1/4 Alum Pop Rivet | RI |
| 9 | 4202760 | 1 | Lock Funnel-Inner Door | PL |
| 10 | 4203080 | 1 | Inner Door Insulation | IN |
| 11 | 4205517 | 1 | Insulation Shield | PL |
| 12 | 4202795 | 1 | Inner Door Back | ST |
| 13 | 4201203-001 | 1 | Door Gasket | GA |
| 14 | 4203028 | 1 | Knob | KN |
| 15 | 4050202 | 34 | 8-18x1/2 Phillips HWH Tek | SC |
| Not Shown | 4050585 | 1 | #8 External Tooth Lockwasher (Used with Item 2) | WA |

CABINET ASSEMBLY



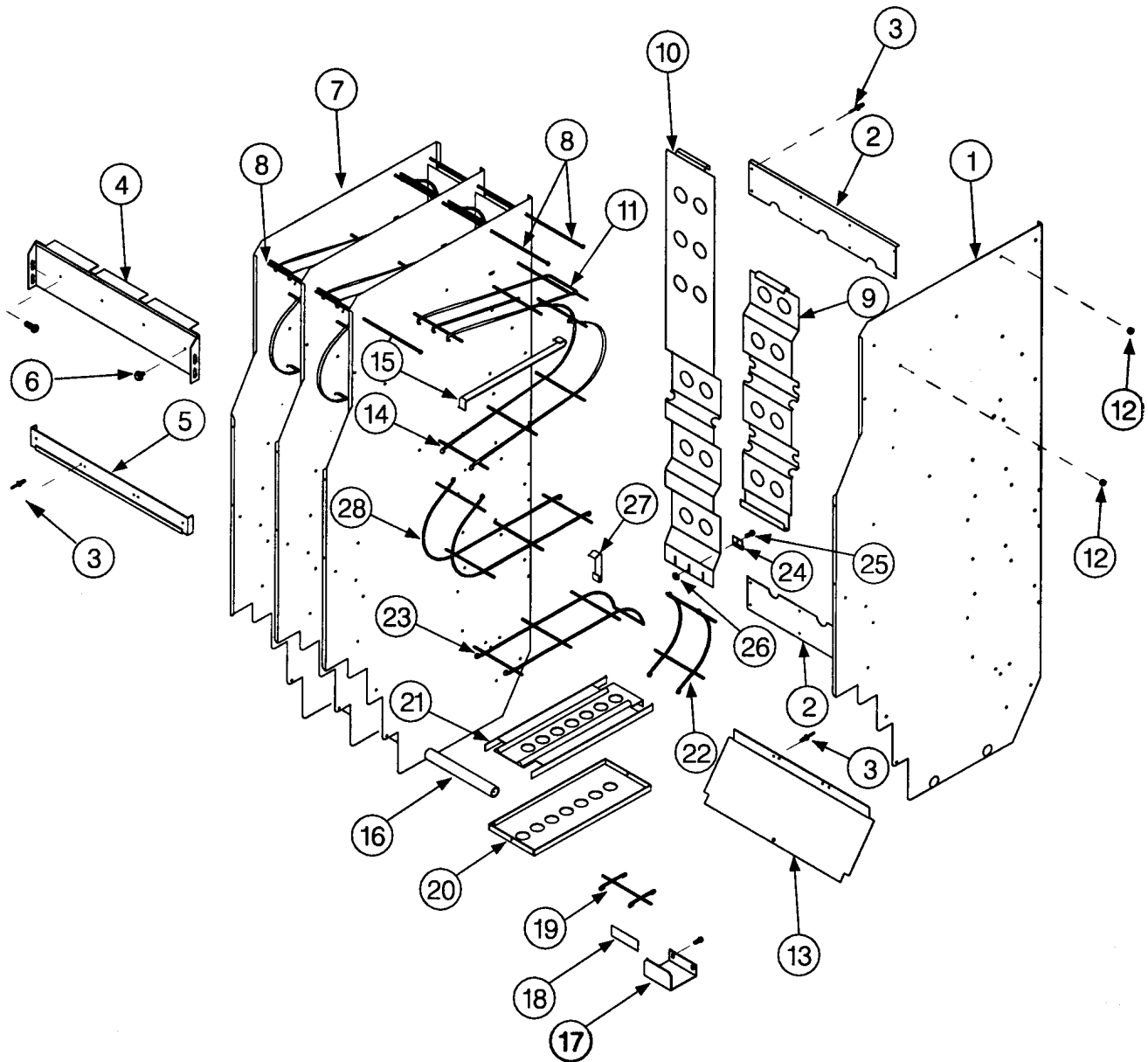
A10407

CABINET ASSEMBLY

| ITEM | PART NUMBER | QTY | DESCRIPTION | CC |
|-------|-------------|---------|---|----|
| | 1212190-001 | 1 | Cabinet Assembly 3038-51 | AS |
| 1 | 1211430-003 | 1 | Cabinet Weld-3038 | WE |
| 2 | | | Refrigeration Assembly – See Page 14 | AS |
| 3 | 4050202 | 14 | 8-18x1/2 Phillips HWH Tek (AP for Item 2) | SC |
| 4 | 4060310 | 4 | Leg Leveler | LE |
| 5 | 7200623-000 | 1 | Drain Pan | ST |
| 6 | 4025410-000 | 1 | Mayon Tubing - 24" | TU |
| 7 | 7200341-000 | 1 | Tube Clip | CL |
| 8 | 4201398 | 2 | Wood Liner Support | WD |
| 9 | 7960247-000 | 13.5 FT | "A" Frame Gasket | GA |
| 10 | 4202286 | 1 | Back & Bottom Insulation | IN |
| 11 | 4202287 | 1 | Top Insulation | IN |
| 12 | 4202285 | 2 | Side Insulation | IN |
| 14 | 1212162-001 | 1 | Complete Can Rack Assembly 3043 – See Page 10 | AS |
| 15 | 1211196 | 1 | Motor Cover Label Assembly | AS |
| 16 | 8800636 | 4 | 8-18x1/2 Phillips PH Type-B | SC |
| 17 | 1212334 | 3 | Upper Ejector Mechanism – See Page 13 | AS |
| 18 | 1212333 | 3 | Lower Ejector Mechanism – See Page 12 | AS |
| 19 | 8620197-002 | 2 | Tube-Rack Support | TU |
| 20 | 1211179 | 1 | Cabinet Liner Assembly | AS |
| 21 | 4202278-002 | 1 | 1.56w X 20.75 Foam Tape | TA |
| 22 | 4202278-001 | 2 | 1.56w X 54.31 Foam Tape | TA |
| 23 | 4202279-001 | 1 | 1.25w X 20.75 Foam Tape | TA |
| 24 | 4202189 | 10 | Snap In Plastic Spring-1/4 | PL |
| 25 | 1211213-001 | 1 | Can Chute Assembly | RA |
| 26 | 7200468-001 | 10 | 10-12x1 Phillips TH Type-A | SC |
| 28 | 7100042-000 | 1 | Drain Tube | TU |
| 29 | 4202284 | 1 | .5” Stud Diameter Push Nut | NU |
| 30 | 1210789-002 | 1 | Bracket Lock Weld Assembly | AS |
| 31 | 4050760 | 1 | 1/2-13 Square Nut W/Retainer | NU |
| 34 | 4201239 | 14 | 1/4-20x3/4 HWH Taptite | SC |
| 35 | 4202345-001 | 1 | Can Rack Support-Right | ST |
| 36 | 4202345 | 1 | Can Rack Support-Left | ST |
| 37 | 4202347 | 1 | Air Baffle | ST |
| 38 | 4050202 | 2 | 8-18x1/2 Phillips HWH Tek | SC |
| 42 | 7090002-713 | 1 | ¾” Cable Clamp | CP |
| 43 | 4206501 | 1 | Umbilical Harness | HA |
| Not | 8620494 | 1 | Tag - Plug Warning | LA |
| Shown | 7250135-002 | 2 | Hole Plug, 1" | PL |
| | 4033712 | 4 | Cable Tie 7 3/8" | WT |
| | 4025610 | 1 | Door Glide | PL |
| | 4201366 | 1 | Warning-Tag | LA |
| | 4205003 | 2 | Pre-Cool Storage Shelf - Shown on Final | ST |

CABINET ASSEMBLY CONTINUED

Complete Can Rack Assembly



A10002

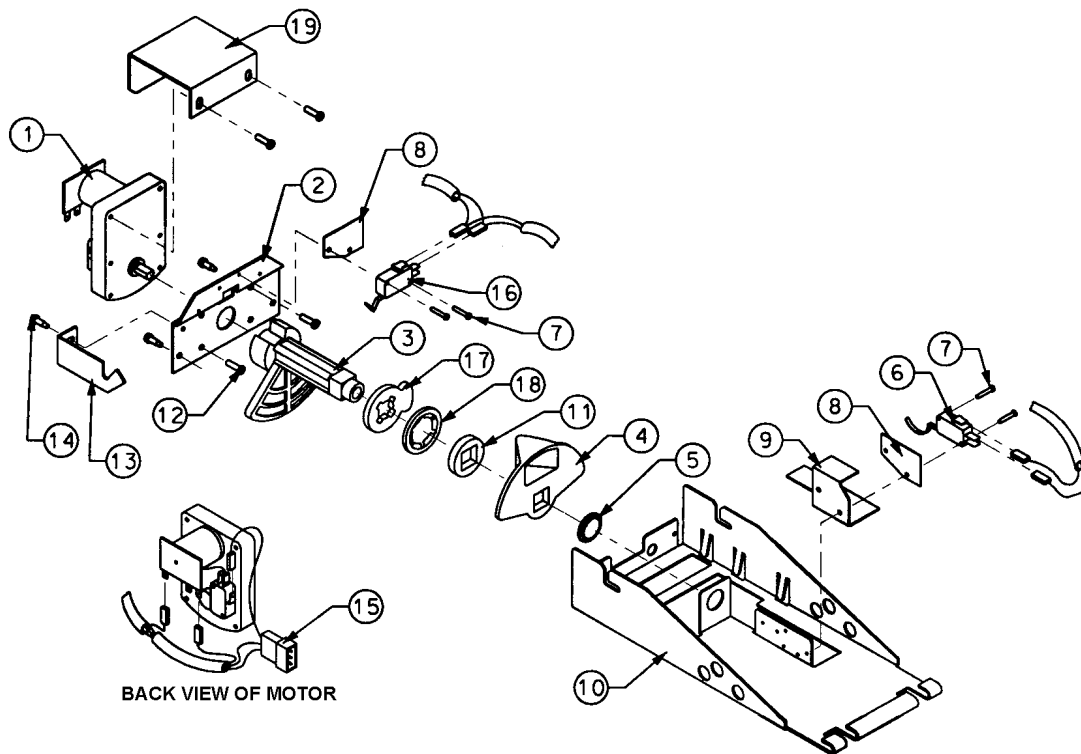
Complete Can Rack Assembly

| ITEM | PART NUMBER | QTY | DESCRIPTION | CC |
|-------|-------------|-----|---------------------------------------|----|
| | 1212162-001 | 1 | Complete Can Rack Assembly - 3043 | AS |
| - | 1211199 | 1 | Rack Rivet Assembly | AS |
| 1 | 4202357 | 3 | Partition Panel – Right | ST |
| 2 | 4201562-001 | 2 | Top & Bottom Tie Strip | ST |
| 3 | 4050665 | 20 | 1/8x1/4 Pop Rivet | RI |
| 4 | 1210891 | 1 | Tie Strap Label Assembly | AS |
| 5 | 4201630 | 1 | Lower Front Tie Strap | ST |
| 6 | 8810014 | 4 | 12-14x1/2 Phillips TH Type AB | SC |
| 7 | 4202357-001 | 1 | Partition Panel - Left | ST |
| 8 | 7332474-003 | 45 | Tie Rod - .156 Dia | WF |
| 9 | 4201548 | 3 | Can Deflector Plate-Short | ST |
| 10 | 4201549 | 3 | Can Deflector Plate-Long | ST |
| 11 | 7331977-000 | 6 | Wire Shelf-Upper | WF |
| 12 | 7332476-000 | 45 | .156 Stud Diameter Pushnut | NU |
| 13 | 4202346 | 1 | Back Air Baffle | ST |
| 14 | 7331974-002 | 3 | Center Loop-Can Rack | WF |
| 15 | 7331999-000 | 18 | Retainer Strip | ST |
| 16 | 8620197-002 | 2 | Tube-Rack Support | TU |
| 17 | 4202992 | 3 | Motor Cover-Bottom | ST |
| 18 | 4201660 | 1 | Ejector Mechanism Labels | LA |
| 19 | 4201535 | 3 | Wire Shelf-Bottom | WF |
| 20 | 4201558 | 3 | Bottom Shelf Insert | ST |
| 21 | 4201560 | 3 | Bottom Shelf | ST |
| 22 | 4201534 | 3 | Bottom Loop-Can Rack | WF |
| 23 | 7331975-000 | 6 | Top Loop-Can Rack | WF |
| 24 | 4201552 | 3 | Deflector Plate Retainer | CL |
| 25 | 4050240 | 3 | 8-32x3/8 Phillips PH MS | SC |
| 26 | 8800956 | 3 | 8-32 Hex Nut W/ETW | NU |
| 27 | 4201551 | 3 | Hanger Strap | ST |
| 28 | 7331974-000 | 12 | Center Loop-Can Rack | WF |
| Not | 1212333 | 3 | Lower Ejector Mechanism – See Page 12 | AS |
| Shown | 1212334 | 3 | Upper Ejector Mechanism – See Page 13 | AS |
| | 4033712 | 1 | Cable Tie 7 3/8" | WT |
| | 4206235 | 1 | Cooling Label | LA |

CABINET ASSEMBLY CONTINUED

Complete Can Rack Assembly Continued

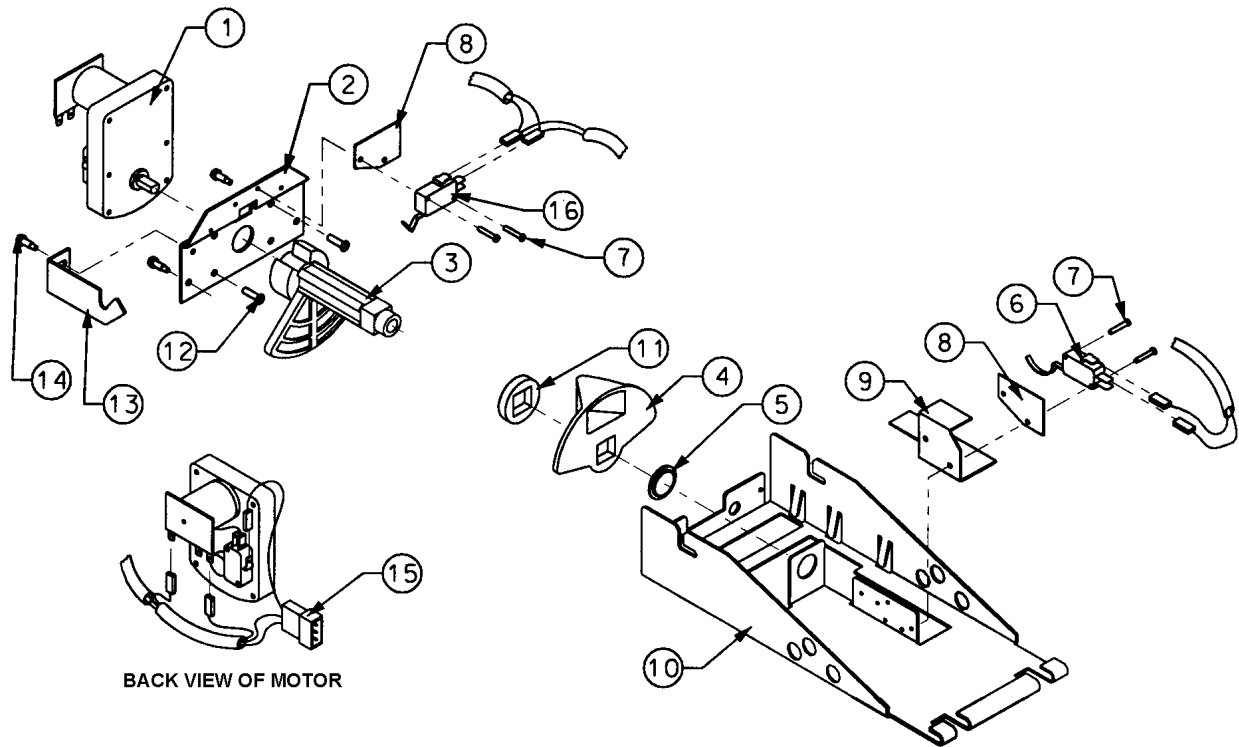
Lower Ejector Mechanism



A10023

| ITEM | PART NUMBER | QTY | DESCRIPTION | CC |
|------|-------------|-----|---------------------------------------|----|
| | 1212333 | 3 | Lower Ejector Mechanism | AS |
| 1 | 4202826 | 1 | 24VDC Motor-360 Degree D-Shaft/3 Wire | MO |
| 2 | 4201328 | 1 | Motor Mount Plate | ST |
| 3 | 4201162 | 1 | Cam-Large Ejector Mechanism | PL |
| 4 | 4201161 | 1 | Cam-Small Ejector Mechanism | PL |
| 5 | 8620714 | 1 | Bushing-Snap-In | BU |
| 6 | 8620718 | 1 | Sold-Out Switch | SW |
| 7 | 8801332 | 4 | 4-40x3/4 Phillips PH Taptite | SC |
| 8 | 4003735 | 2 | Switch Insulator | IN |
| 9 | 4201561 | 1 | Switch Cover | ST |
| 10 | 4201327 | 1 | Mechanism Plate | ST |
| 11 | 4201160 | 1 | Spacer | PL |
| 12 | 8800636 | 2 | 8-18x1/2 Phillips PH Type-B | SC |
| 13 | 4201326 | 1 | Retaining Bracket | ST |
| 14 | 4050202 | 3 | 8-18x1/2 Phillips HWH Tek | SC |
| 15 | 4205079 | 1 | Harness-Ejector Mechanism Cd-6/Smiv | H |
| 16 | 8620718-001 | 1 | Sold-Out Switch | SW |
| 17 | 4201542 | 1 | Auxiliary Ejector | PL |
| 18 | 4201628 | 1 | Cam Shaft Retainer | RR |
| 19 | 4202992 | 1 | Motor Cover-Bottom | ST |

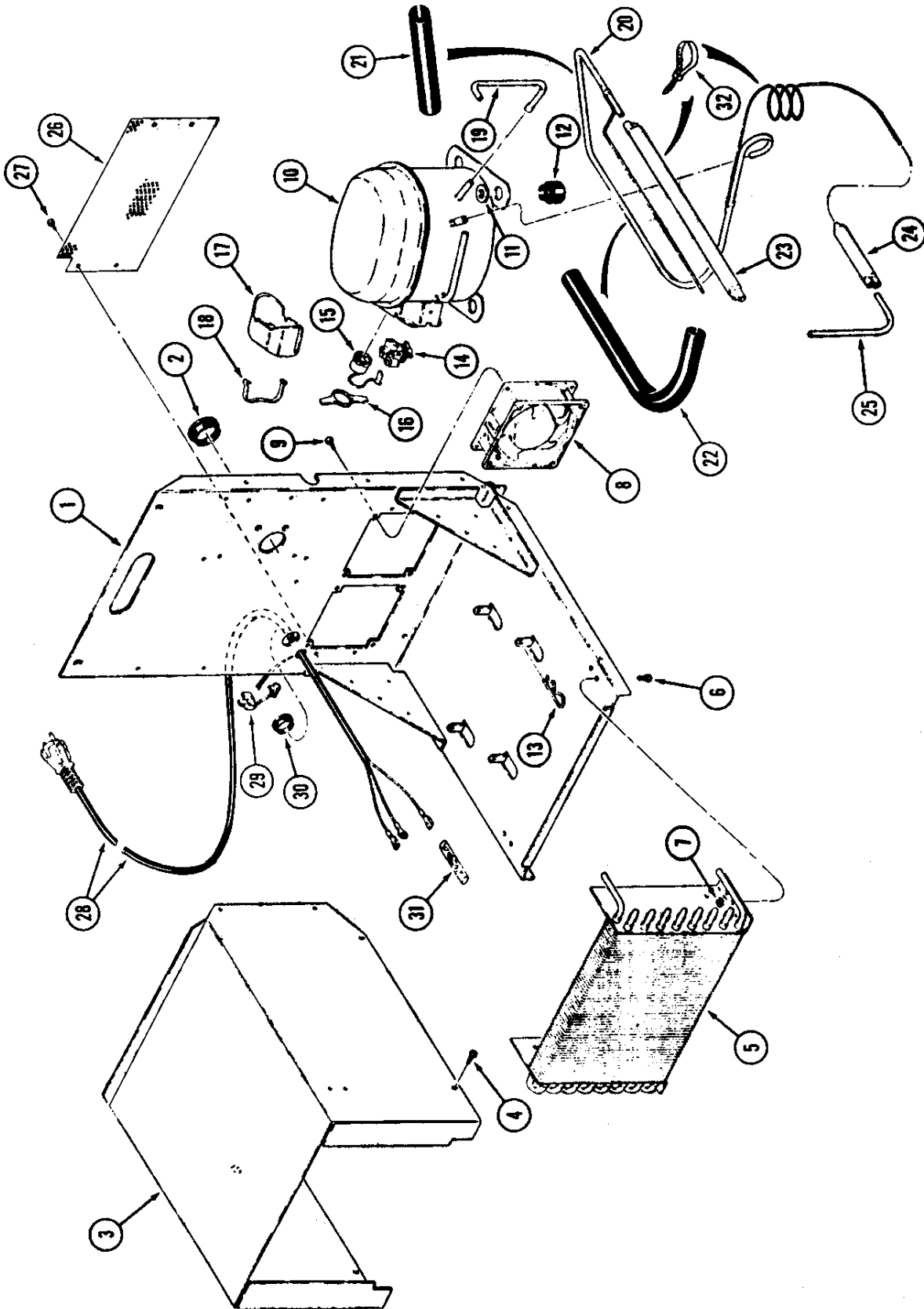
Upper Ejector Mechanism



A10024

| ITEM | PART NUMBER | QTY | DESCRIPTION | CC |
|------|-------------|-----|---------------------------------------|----|
| | 1212334 | 3 | Upper Ejector Mechanism | AS |
| 1 | 4202826 | 1 | 24VDC Motor-360 Degree D-Shaft/3 Wire | MO |
| 2 | 4201328 | 1 | Motor Mount Plate | ST |
| 3 | 4201162 | 1 | Cam-Large Ejector Mechanism | PL |
| 4 | 4201161 | 1 | Cam-Small Ejector Mechanism | PL |
| 5 | 8620714 | 1 | Bushing-Snap-In | BU |
| 6 | 8620718 | 1 | Sold-Out Switch | SW |
| 7 | 8801332 | 4 | 4-40x3/4 Phillips PH Taptite | SC |
| 8 | 4003735 | 2 | Switch Insulator | IN |
| 9 | 4201561 | 1 | Switch Cover | ST |
| 10 | 4201327 | 1 | Mechanism Plate | ST |
| 11 | 4201160 | 1 | Spacer | PL |
| 12 | 8800636 | 2 | 8-18x1/2 Phillips PH Type-B | SC |
| 13 | 4201326 | 1 | Retaining Bracket | ST |
| 14 | 4050202 | 3 | 8-18x1/2 Phillips HWH Tek | SC |
| 15 | 4205079 | 1 | Harness-Ejector Mechanism CD-6/SMIV | HA |
| 16 | 8620718-001 | 1 | Sold-Out Switch | SW |

REFRIGERATION ASSEMBLY



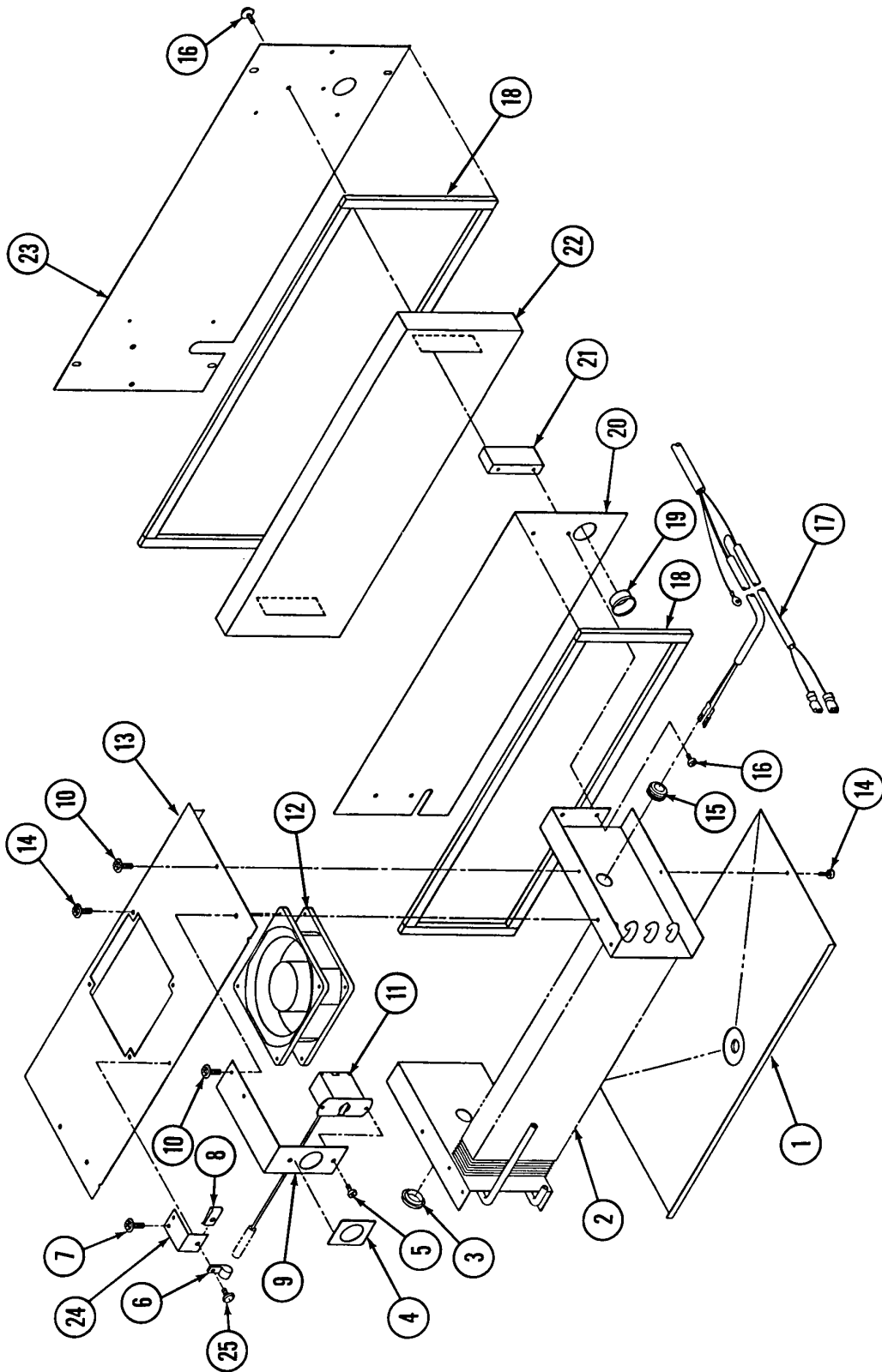
A10401

| ITEM | PART NUMBER | QTY | DESCRIPTION | CC | ITEM | PART NUMBER | QTY | DESCRIPTION | CC |
|------|-------------|-----|-----------------------------|----|-------------|-------------|-----|-------------------------------------|----|
| 1 | 1212209-001 | 1 | Refer Base Weld | WE | 23 | 4060480-001 | 1 | Accumulator - 13" | RC |
| 2 | 7250135-008 | 1 | Hole Plug, 5/8" | PL | 24 | 4205468 | 1 | Drier-Bonded Core | RC |
| 3 | 4202328 | 1 | Compressor Cover | ST | 25 | 4202633 | 2 | Service Line | RC |
| 4 | 4050202 | 17 | 8-18x1/2 Phillips HWH Tek | SC | 26 | 4207787 | 1 | Fan Guard | ST |
| 5 | 4060477 | 1 | Condenser Coil | RC | 27 | 4050240 | 1 | 8-32x3/8 Phillips PH MS | SC |
| 6 | 4050240 | 4 | 8-32x3/8 Phillips PH MS | SC | 28 | 4033631-000 | 1 | Power Cable W/O Grommet | EL |
| 7 | 4050513 | 4 | 8-32 Twin Whiz Lock Nut | NU | 29 | 4033683 | 1 | Cord Strain Relief Bushing | GR |
| 8 | 4034344-000 | 2 | Evaporator Fan - 115V | FA | 30 | 8359801-2 | 1 | Snap Bushing-Split | BU |
| 9 | 8800829 | 8 | 10-24x3/8 Phillips TH W/ETW | SC | 31 | 4033527 | 2 | Connector-Line Splice | EL |
| 10 | 4203789 | 1 | Compressor-1/4 H.P. | CO | 32 | 4033712 | 3 | Cable Tie 7 3/8" | WT |
| 11 | 4050608 | 4 | 1/2 Flat Washer | WA | 33 | 4205306 | 1 | Stand Off Bracket | ST |
| 12 | 8323090-1 | 4 | Grommet-Compressor | GR | 34 | 7332474-008 | 1 | Tie Rod .156 Dia | WF |
| 13 | 4050773-001 | 4 | Hitch Pin | WF | 35 | 7332476-000 | 1 | .156 Stud Dia Pushnut | NU |
| 14 | 8333894-8 | 1 | Relay-Starting | CO | Not Shown | 4205787 | 1 | Suction Line Cover - Shown on Final | ST |
| 15 | 8045052-12 | 1 | Overload Protector | CO | 4205856 | | 1 | Thermostat Cover - Shown on Final | ST |
| 16 | 8344305 | 1 | Spring-Overload | CO | 7332492-000 | | 1 | Decal Warning Warranty | LA |
| 17 | 8344308 | 1 | Cover-Terminal | CO | 4202623 | | 1 | Suction Line-Accumulator | RC |
| 18 | 8344306 | 1 | Bale Strap | CO | 4205307 | | 1 | Warning Label-CD6 | LA |
| 19 | 4060716 | 1 | Discharge Line | RC | | | | | |
| 20 | 1211287-002 | 1 | Suction Line Assembly | RC | | | | | |
| 21 | 4206366-001 | 1 | Insulation Tubing 13" | IN | | | | | |
| 22 | 4206366-004 | 1 | Insulation Tubing 17" | IN | | | | | |

REFRIGERATION ASSEMBLY

REFRIGERATION ASSEMBLY CONTINUED

Evaporator Assembly



A1J0408

Evaporator Assembly

| ITEM | PART NUMBER | QTY | DESCRIPTION | CC |
|------|-------------|--------|-------------------------------------|----|
| | 1212643 | 1 | Evaporator Assembly 115V | AS |
| 1 | 4206100 | 1 | Condensate Pan | ST |
| 2 | 4206047 | 1 | Evaporator Coil | RC |
| 3 | 7250135-003 | 1 | Hole Plug, 3/4" | PL |
| 4 | 4202547 | 1 | Label-Thermostat | LA |
| 5 | 4050240 | 1 | 8-32x3/8 Phillips PH MS | SC |
| 6 | 4060116 | 1 | Plastic Wire Clamp 3/8 | CL |
| 7 | 4050202 | 2 | 8-18x1/2 Phillips HWH Tek | SC |
| 8 | 8352837 | 1 | 10-32 U Type Spring Nut | NU |
| 9 | 4202330 | 1 | Thermostat Mount | ST |
| 10 | 8800852 | 4 | 8-32x3/8 Phillips PH Type-T | SC |
| 11 | 4202526 | 1 | Thermostat | TC |
| 12 | 4034344-000 | 1 | Evaporator Fan (115v) | FA |
| 13 | 4206101 | 1 | Evaporator Cover | ST |
| 14 | 8800829 | 6 | 10-24x3/8 Phillips TH W/ETW Type-23 | SC |
| 15 | 4203181-002 | 1 | Snap Bushing | PL |
| 16 | 8801322 | 8 | 8-18x1/2 Phillips PH-Hilo | SC |
| 17 | 4202327 | 1 | Harness-Refrigeration | HA |
| 18 | 4060006-500 | 8.5 FT | 1/4" X 1/2" Foam Tape | TA |
| 19 | 8359801-2 | 1 | Snap Bushing-Split | BU |
| 20 | 4202312 | 1 | Evaporator Mount | ST |
| 21 | 4202276 | 2 | Evaporator Spacer | PL |
| 22 | 4202340 | 1 | Evaporator Insulation | IN |
| 23 | 4202316 | 1 | Thermostat Bulb Bracket | ST |
| 24 | 4202315 | 1 | Evaporator Backup | ST |
| 25 | 8800833 | 1 | 10-32x1/2 Phillips TH W/ETW Type-D | SC |