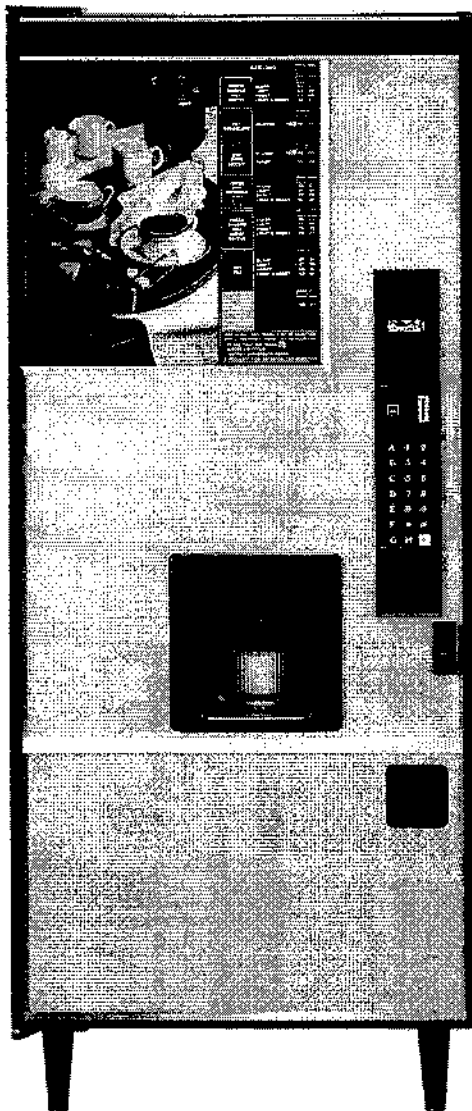




HBA10A & HBA11A HOT BEVERAGE MACHINE



FILE COPY

PARTS MANUAL

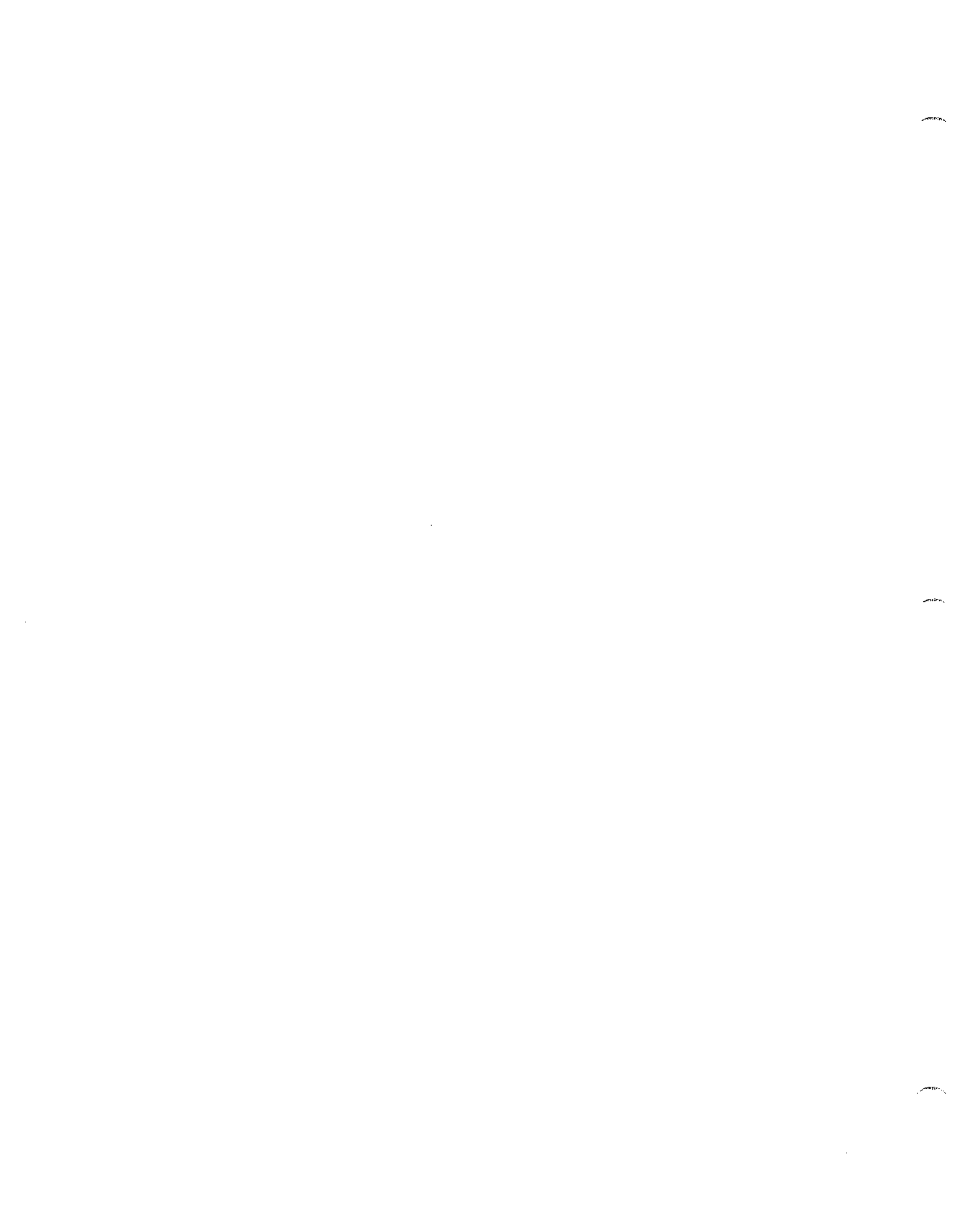


Table of Contents

GENERAL INFORMATION.....	1	Cup Delivery Installation.....	21
Payment.....	1	Cup Chute Assembly.....	22
Order By Mail.....	1	COMPLETE CABINET ASSEMBLY.....	24
To Order By Fax.....	1	Power Box Assembly.....	26
To Order By Phone.....	1	Spouts and Spout Assembly.....	28
Returns.....	1	Water Filter Installation.....	29
Limitation Of Liability.....	1	Water Tank Installation.....	30
FINAL ASSEMBLY.....	2	Water Tank Shelf and Cover.....	32
DOOR STYLING.....	4	Water Tank Lid Assembly.....	34
DOOR ASSEMBLY.....	6	Blower Assembly.....	35
Menu and Display Installation.....	8	Ingredient Shelf	
Service Box Installation.....	10	Freeze Dried: Main Shelf.....	36
Validator Options.....	11	Freeze Dried: Coffee and Decaf Coffee Shelf.....	38
Coin Insert, Keypad and Display Readout Installation.....	12	Fresh Brew: Main Shelf.....	40
Coin Mechanism Options.....	14	Fresh Brew: Decaf Coffee Shelf.....	42
Control Board Installation.....	15	Fresh Brew: Coffee Shelf.....	44
Cup Drop Installation.....	16	Whipper Installation.....	46
Cup Turret Assembly.....	17	Tall Canister Assembly.....	47
Cup Drop Assembly.....	18	Mixing Bowl Assembly.....	48
Cup Ring Assembly.....	20	Motor Assembly.....	49
		Fresh Brew: Brewer Assembly.....	50
		Kits and Options.....	51



GENERAL INFORMATION

Welcome to VendNet™. If you have any questions when placing your order, please call and we'll be happy to assist you. Please provide the following information when placing your order:

- Quantity Required
- Part Number
- Shipping and Billing Address
- Description
- Preferred Method of Shipment
- Vendor Model Number
- Customer Account Number
- Serial Number

MINIMUM ORDER \$25.00. You may wish to inquire on prices of parts at the time of your order. If you order less than the minimum, please check our catalog for other parts you may require to bring your order up to the minimum order.

Payment

OPEN ACCOUNT with approved credit.

MASTER CARD - VISA - C.O.D.

Order By Mail

You may place your order for replacement parts by providing the necessary information as requested above, and mailing your order to:

VendNet™
165 North 10th Street
Waukee, Iowa 50263-0488

Order forms are available upon request from VendNet™, or you may use your own purchase order form.

To Order By Fax

1-515-987-4447

You may Fax your order for replacement parts by providing the necessary information as requested above to VendNet™.

If you have any questions, check out our Website <http://www.vendnetusa.com> or please call VendNet™. Ask for the Parts Department. We will be happy to assist you. E-Mail: VendNet@Ecity.net

To Order By Phone

USA 1-800-833-4411

Canada 1-800-858-4730

Other locations 1-515-274-3641

You may call in your order for replacement parts. Ask for VendNet™ Parts Department. Please provide the necessary information, as requested above, to allow us to provide you with prompt courteous service.

Returns

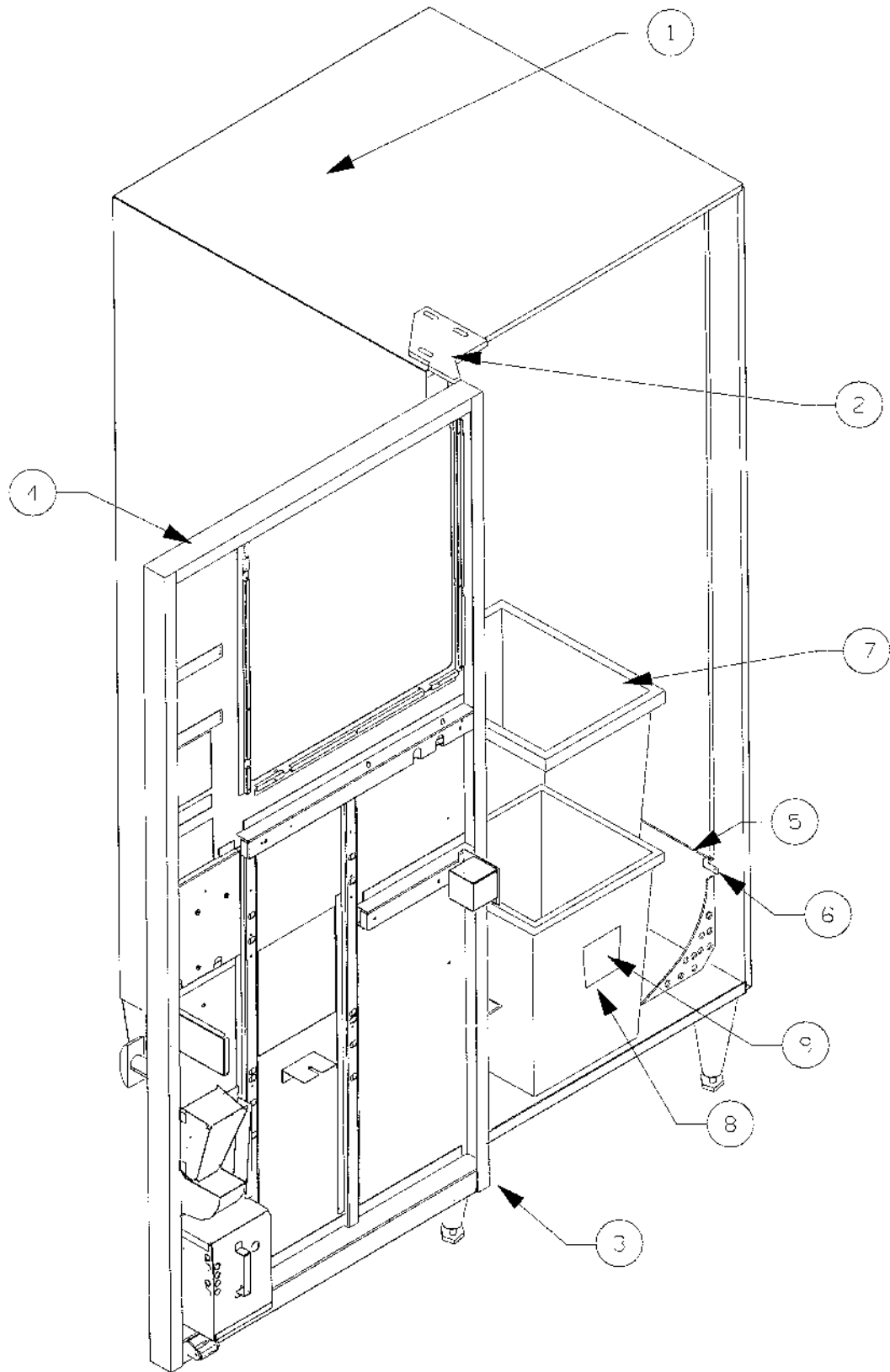
RESTOCKING CHARGE 20%. A restocking charge of 20% will apply to merchandise accepted by VendNet™ for return, except items processed as warranty.

All items returned must be accompanied by a Return Form clearly stating the reason for return. Returns are to be shipped freight prepaid to VendNet™, 165 North 10th Street, Waukee, Iowa 50263-0488. (Return Forms are available upon request from VendNet™.)

Limitation Of Liability

VendNet™ shall not be liable for any injury, loss or damage, whether direct, incidental or consequential arising out of the use of or the inability to use any part, parts or products sold by VendNet™. The remedies of the buyer set forth herein are exclusive, and the liability of VendNet™. With respect to any contract or sale or anything done in connection herewith, whether in connection therewith, whether in contract, in tort, under any warranty, or otherwise, shall not, except as expressly provided herein, exceed the price of the part, parts or products on which such liability is based. Any statements or representations about the parts or product, other than those contained herein, do not constitute warranties and shall not be relied on by the buyer and shall have no force of effect unless contained in a written agreement signed by officers of VendNet™.

FINAL ASSEMBLY



FINAL ASSEMBLY

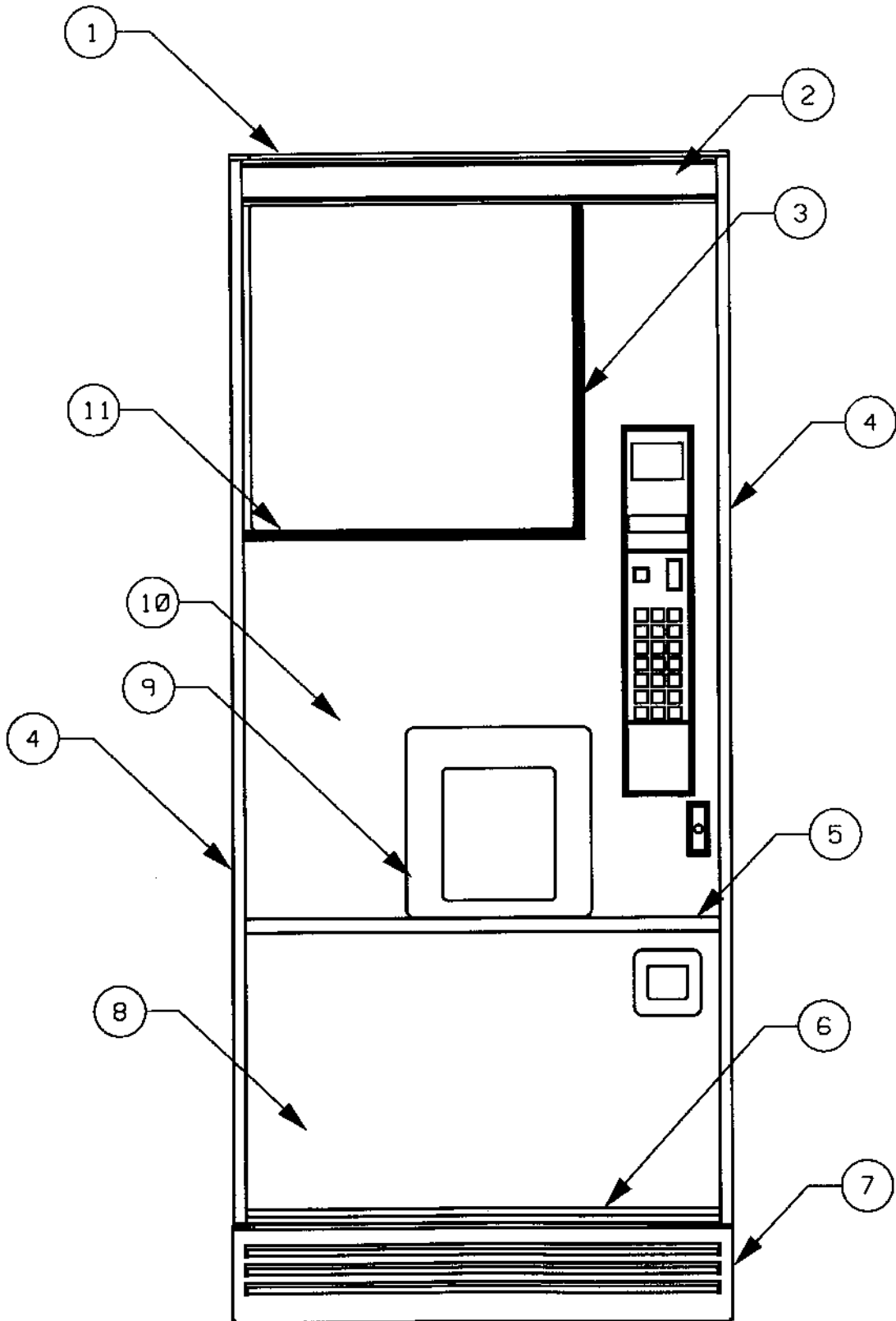
ITEM	PART NUMBER	QTY	DESCRIPTION
1	1212953-001		Cabinet Assembly (Fresh Brew) – See Page 24
	1212953		Cabinet Assembly (Freeze Dried) – See Page 24
2	1212078-003	1	Hinge Weld – Upper
-	4050099	3	5/16-18x3/4 Carriage Bolt (AP* for Item 2)
-	4050066	3	5/16-18 Hex Nut - Plated (AP for Item 2)
3	1212078-004	1	Hinge Weld – Lower
-	4201385	3	5/16-18-1 Thread Bolt (AP for Item 3)
-	4050066	3	5/16-18 Hex Nut - Plated (AP for Item 3)
-	4201138	2	Hinge Spacer – Nylon (AP for Item 3)
4	1212925-001		Door Assembly (Fresh Brew) – See Page 6
	1212925		Door Assembly (Freeze Dried) – See Page 6
5	4207072	1	Basket/Bucket Guide Rod (Fresh Brew)
	4202435	1	Basket/Bucket Guide Rod (Freeze Dried)
6	8368346	2	Bracket – Waste Guide Rod
-	8801204	2	10-16x3/8 Phillips TH w/ ETW Type B (AP for Item 6)
7	4207018	1	Wastebasket – Grounds (Fresh Brew)
8	4207067	1	Overflow Bucket
9	4207148	1	Warning Label – Bucket
Not	4050548-001	26	Screw Covers
Shown	4202926	A/R*	Trash Bag (Fresh Brew)
	1212811-001	1	Service Packet (Fresh Brew)
	1212811-002	1	Service Packet (Freeze Dried)
	4033712	3	Cable Tie 7 3/8"
	4202686	1	Service Manual
	4203562	1	Keypad Overlay
	4207248	1	Product Label

* HBA10A = Freeze Dried, HBA11A = Fresh Brew

* AP = Attaching Part

* A/R = As Required

DOOR STYLING



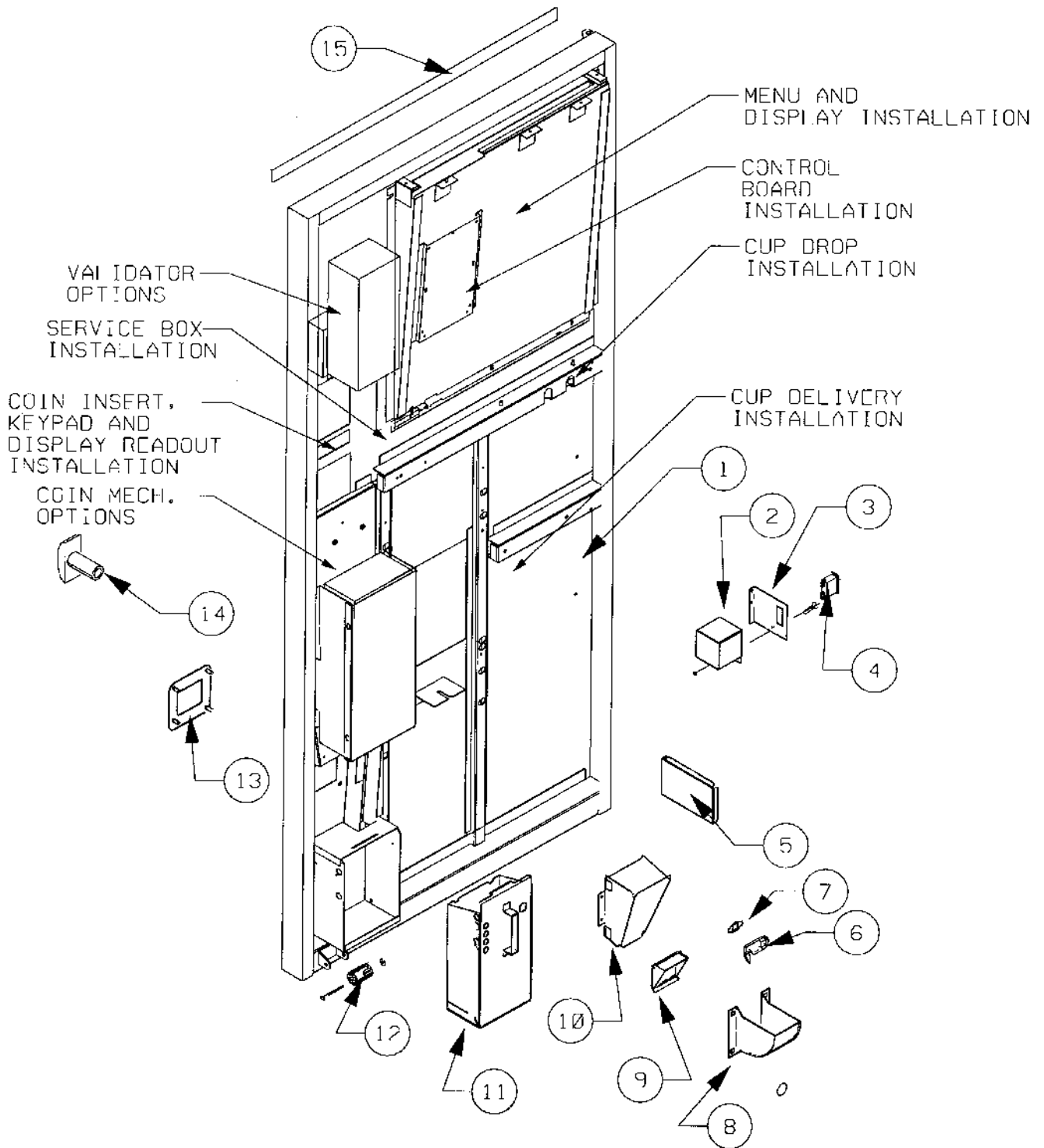
DOOR STYLING

ITEM	PART NUMBER	QTY	DESCRIPTION
	1212920		Presidential Walnut
	1212920-001		Sterling Royce
	1212920-002		Pewter
	1212920-003		IBM
	1212920-004		Tron - USI
	1212920-005		Black Morocco
	1212920-006		Wurlitzer
	1212920-007		Tron - FSI
	1212920-008		Genesis
	1212920-009		Lt. Grey Paint
1	4202050-009	1	Header Trim
	4050423	3	8-18x3/8 Phillips PH (AP for Item 1)
2	4201119-xxx	1	Trim Insert - See Column 1
3	8383670-050	1	Display Trim - Side
	4050724	2	8-32x3/8 Tee Bolt (AP for Item 3)
	8800956	2	8-32 Hex Nut w/ ETW (AP for Item 3)
4	4205979-xxx	2	Snap-On Trim - See Column 2
-	4201116	10	10x5/16 Trim Screws (AP for Item 4)
5	4206440-001	1	Snap-On Trim
-	4201116	4	10x5/16 Trim Screws (AP for Item 5)
6	4201117-xxx	1	Door Trim - See Column 3
-	4201116	4	10x5/16 Trim Screws (AP for Item 6)
7	1212926	1	Kick Panel - Optional
-	4201377-002	1	Kick Panel Mounting Bracket (AP for Item 7)
8	4207063-xxx	1	Lower Overlay - See Column 4
9	4207049	1	Delivery Trim Panel
	8801204	4	10 - 16 X 3/8 Phillip TH Type B (AP for Item 9)
10	4207062-xxx	1	Upper Overlay - See Column 5
11	8383670-049	1	Display Trim - Bottom
-	4050724	2	8-32x3/8 Tee Bolt (AP for Item 11)
-	8800956	2	8-32 Hex Nut w/ ETW (AP for Item 11)

Styling Package	Column 1 Trim Insert	Column 2 Snap-On Trim	Column 3 Door Trim	Column 4 Lower Overlay	Column 5 Upper Overlay
Presidential Walnut	4201119-169	4205979	4201117-049	4207063-001	4207062-001
Sterling Royce	4201119-168	4205979-001	4201117-050	4207063-005	4207062-005
Pewter	4201119-168	4205979-001	4201117-050	4207063-004	4207062-004
IBM	4201119-168	4205979	4201117-049	4207063-003	4207062-003
Tron - USI	4201119-168	4205979-001	4201117-050	4207063-006	4207062-006
Black Morocco	4201119-168	4205979-001	4201117-050	4207063-002	4207062-002
Wurlitzer	4201119-167	4205979	4201117-049	4207063-009	4207062-009
Tron - FSI	4201119-168	4205979	4201117-049	4207063-006	4207062-006
Genesis	4201119-171	4205979-001	4201117-050	4207063-007	4207062-007
Lt. Grey Paint	4201119-168	4205979-001	4201117-050	4207063-010	4207062-010

* AP = Attaching Part

DOOR ASSEMBLY

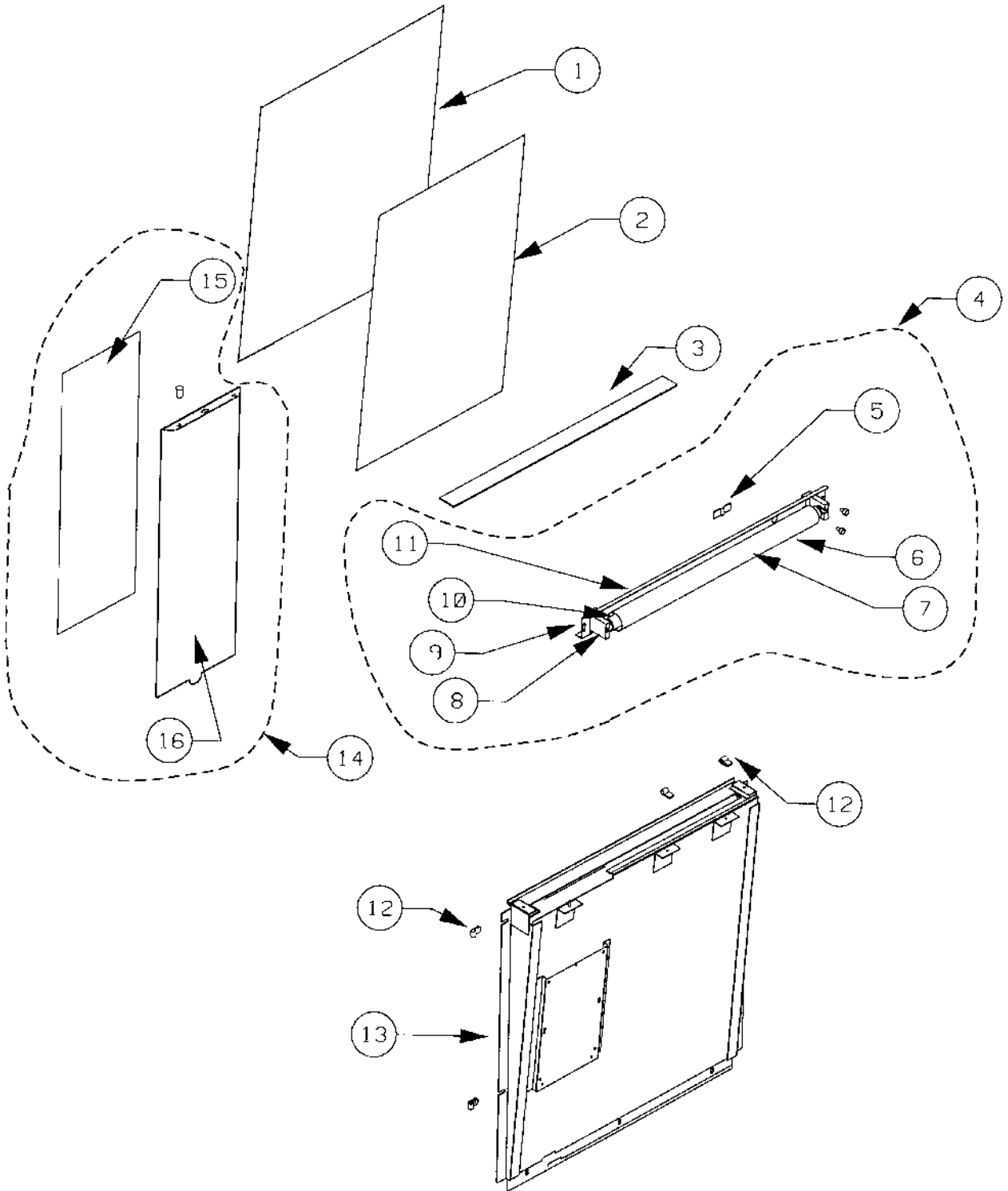


DOOR ASSEMBLY

ITEM	PART NUMBER	QTY	DESCRIPTION
			Menu and Display Installation – See Page 8
			Service Box Installation – See Page 10
			Validator Options – See Page 11
			Coin Insert, Keypad and Display Readout Installation– See Page 12
			Coin Mechanism Options – See Page 14
			Control Board Installation – See Page 15
			Cup Drop Installation – See Page 16
			Cup Delivery Installation – See Page 21
1	1212905	1	Door Weld
2	4203023	1	Door Switch Mounting Bracket
-	8800956	2	8 - 32 X 3/8 Hex Nut w/ETW (AP* for Item 2)
3	4203017	1	Door Switch Cover
-	4050240	1	8 - 32 X 3/8 Phillips PH Machine Screw (AP for Item 3)
-	8800956	1	8-32 Hex Nut w/ETW (AP for Item 3)
4	4034309	1	Door Switch – Dpdt MOM Push
5	4206313	1	Brewer Bumper Bracket (Fresh Brew Only)
6	4202452	1	Cam Lock
7	8801036	1	½ Split Lockwasher
8	4203207	1	Coin Cup
-	4050747	4	¼ Stamped Hex Nut (AP for Item 8)
9	4203208	1	Coin Cup Door
10	1212910	1	Coin Hopper Weld
11	1119032-4	1	Coin Box Weld
12	8368656	1	Roller
-	8383009	1	Pin (AP for Item 12)
-	4200088	1	0.25 Push Nut (AP for Item 12)
13	4203209	1	Coin Cup Bezel
14	4060694-001	1	Lock Handle - Flush
-	8356103	2	10 - 24 X ½ Carriage Bolt (AP for Item 14)
-	8800957	2	10 - 24 Hex Nut (AP for Item 14)
15	4060006-500	15	Foam Tape – ¼" x ½"
Not Shown	4205057	1	Label – 115 V Warning – on Door Switch Cover
	8383421	1	Label – 117 V Warning – on Door
	8373537	1	Label – For Indoor Use – on Door
	8324099-6	4	Clamp – 3/8 x ½
	7250135-001	3	Hole Plug BPF ½" (Bottom of Door)
	4033654-000	1	Rubber Grommet

* AP = Attaching Part

Menu and Display Installation



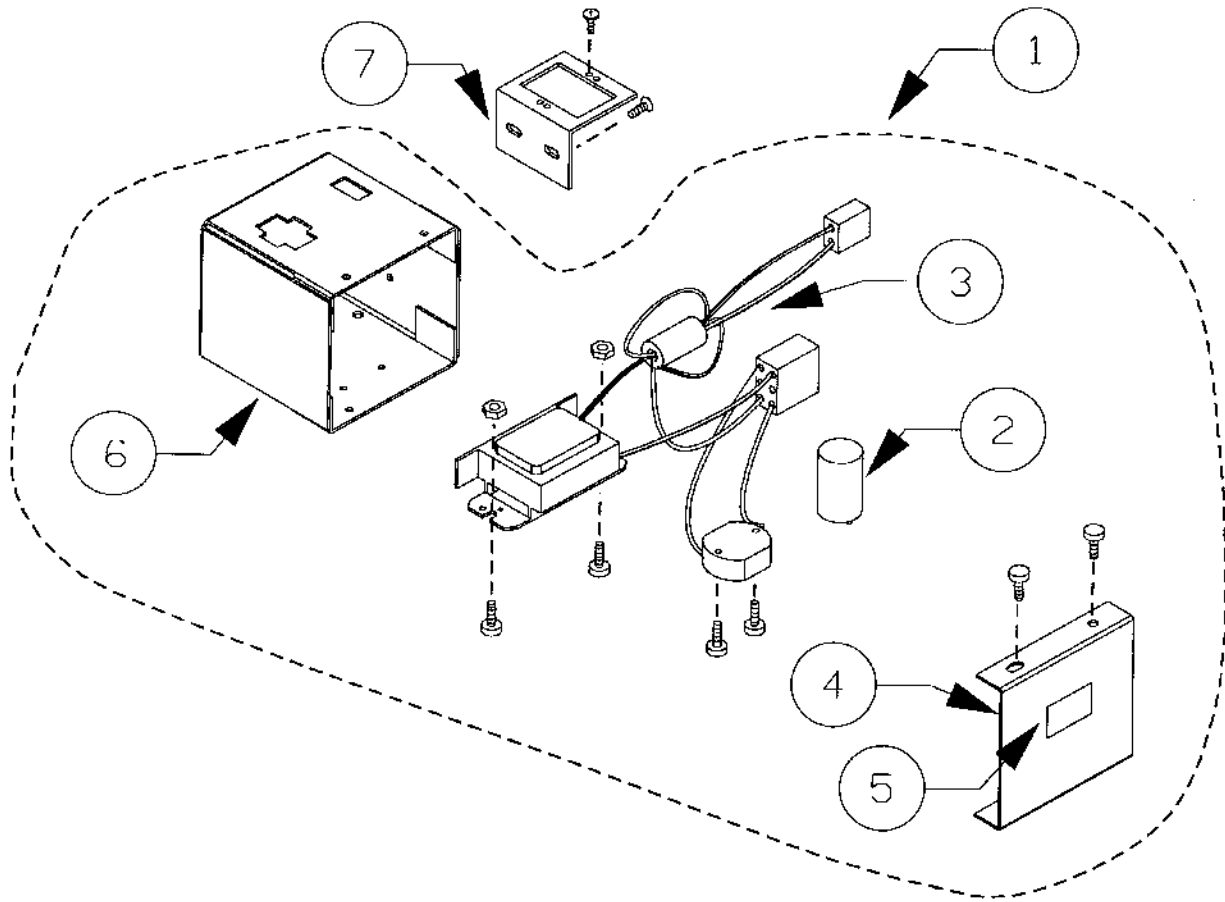
Menu and Display Installation

ITEM	PART NUMBER	QTY	DESCRIPTION
1	4202508	1	Sign Window Glass
2	4203128	1	Picture Label
3	4203330	1	Light Diffuser
4	1212023		Light Assembly - 115 V
5	4060130	1	Press Clip - 1/4"
6	4025764	1	Safety Tube - Plastic
7	4033549	1	Fluorescent Lamp 18" - 115 V
8	4033548	2	Fluorescent Lamp Holder
9	4203418	1	Light Bracket
-	8800060	2	6 - 32 X 3/8 Phillip PH MS (AP* for Item 9)
10	4033713-003	2	Safety Shield End Cap
11	4033671	1	Grommet - 3/8" ID
12	8324099-6	4	3/8 X 1/2 Clamp
13	1212908	1	Sign Weld
-	8801204	11	10 - 16 X 3/8 Phillip TH Type B (AP for Item 13)
14	1212923	A/R*	Menu Label Assembly - Full
	1212923-001	A/R*	Menu Label Assembly - Basic
15	4207247	1	Menu Label - Full
	4207247-001	1	Menu Label - Basic
	4207546	1	Menu Label - Spanish
	4208304	1	Menu Label - French
16	4207081	1	Menu Plate
-	8330164	1	8 - 32 Thumb Nut - Brass (AP for Item 16)
Not	1211457	1	Light Harness Assembly (Included in Item 4)
Shown	7090002-713	2	3/4" Cable Clamp

* AP - Attaching Part

* A/R = As Required

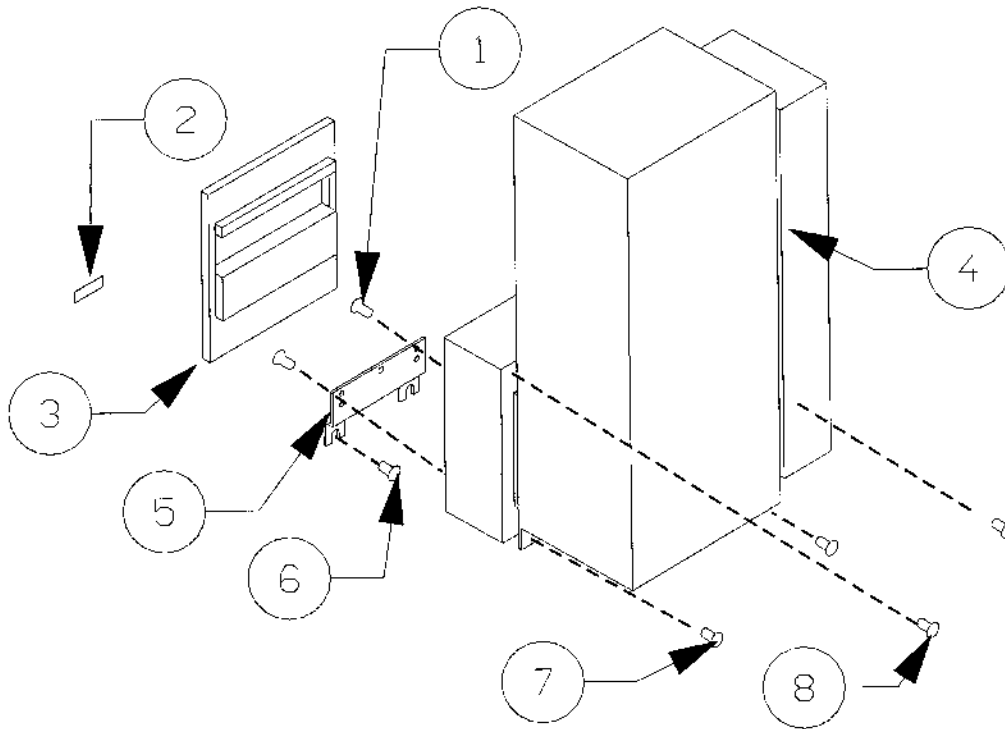
Service Box Installation



ITEM	PART NUMBER	QTY	DESCRIPTION
1	1211313		Service Box Assembly
2	4033567	1	Starter - FS-2
-	8800025	2	4 - 40 X 1/2 Phillips PH MS (AP* for Item 2)
3	1211314	1	Service Harness Assembly (Includes Ballast)
-	8800364	2	10 - 24 X 1/2 Phillips PH MS LW (AP for Item 3)
-	8800957	2	10 - 24 Hex Nut w/ ETW (AP for Item 3)
4	4202924	1	Service Box Cover
-	8801204	2	10 - 16 X 3/8 Phillips TH w/ ETW (AP for Item 4)
5	4205057	1	Warning Label - 115 V
	4206717	1	Warning Label - 230 V
6	4202923	1	Service Box
-	8801204	2	10 - 16 X 3/8 Phillips TH w/ ETW (AP for Item 6)
7	4202872	1	Plug Bracket
-	4050423	2	8-18x3/8 Phillips PH Type AB (AP for Item 7)
-	8801204	2	10 - 16 X 3/8 Phillips TH w/ ETW (AP for Item 7)

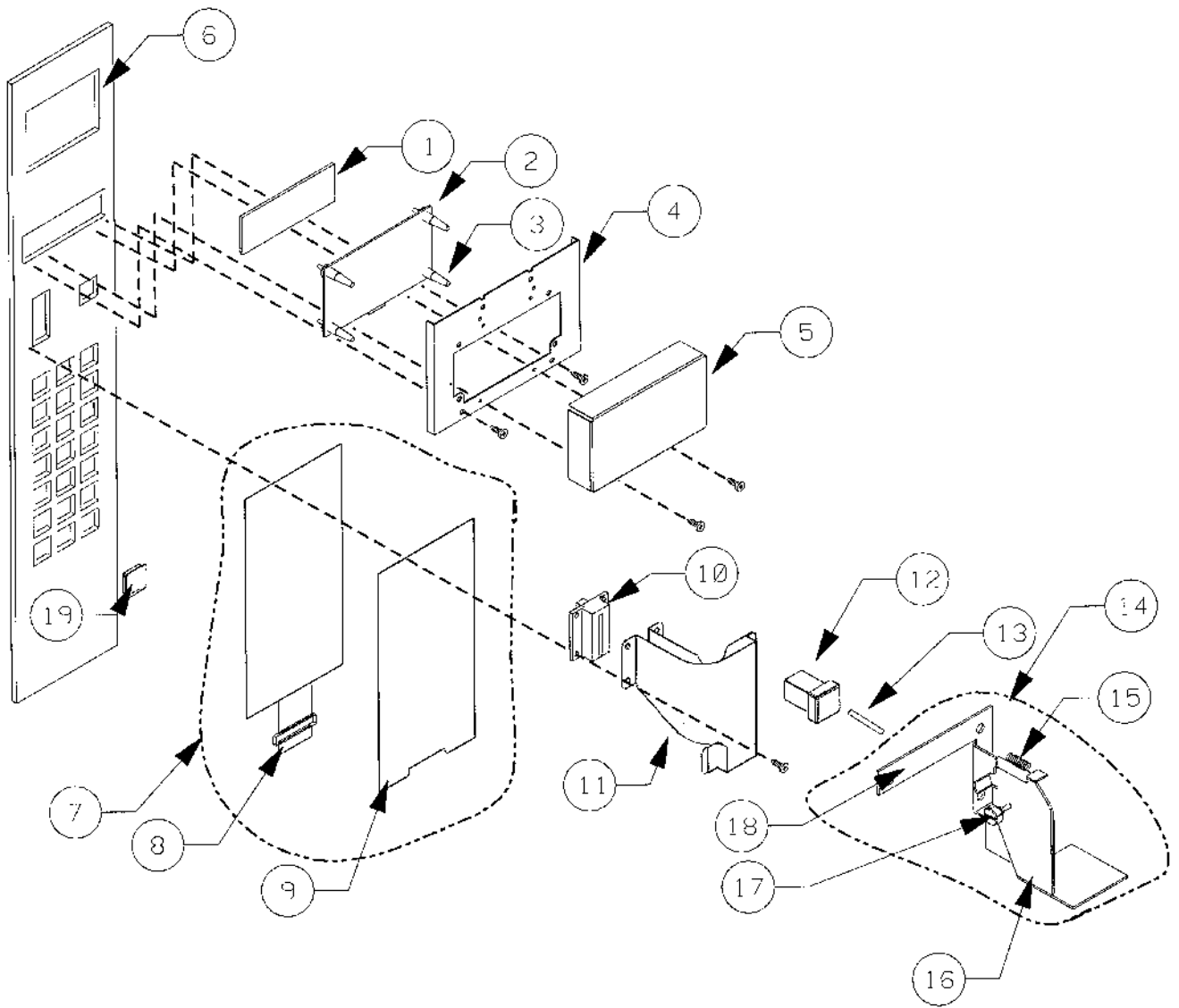
* AP = Attaching Part

Validator Options



ITEM	PART NUMBER	QTY	DESCRIPTION
1	4050423	2	8 - 18 X 3/8 Phillips PH Type AB
2	4202255	.25 FT	Gasket
3	4025755	1	Bezel
4	4205536-124	1	Validator - COINCO BA32SA - 24 V
	4203217	1	Validator - MAKA NB2-10A-400F - 115 V
	4200315-24	1	Validator - MARS
	4206465-003	1	Validator - CBV INTERNATIONAL
5	4003094-002	1	Lower Mounting Bracket
6	8801204	2	10 - 16 X 3/8 Phillips w/ ETW
7	8800636	2	8 - 18 X 1/2 Phillips PH Type B
-	8800636	4	8 - 18 X 1/2 Phillips PH Type B (With MAKA Validator Only)
8	4050202	2	8 - 18 X 1/2 Phillips Tek HWH
Not	4203684	1	Validator Data Harness - COINCO, MARS
Shown	4200708-24	1	Validator Harness - 24 V - COINCO, MARS
	4200704-117	1	Validator Harness - MAKA
	4203948-24	1	Validator Harness - CBV INTERNATIONAL
	4203676	1	Validator Label
	4020872	1	Validator Label
	4033712	4	Cable Tie - 7 3/8"
	4020872	1	Warning Label - 115 V (With MAKA Validator Only)

Coin Insert, Keypad and Display Readout Installation

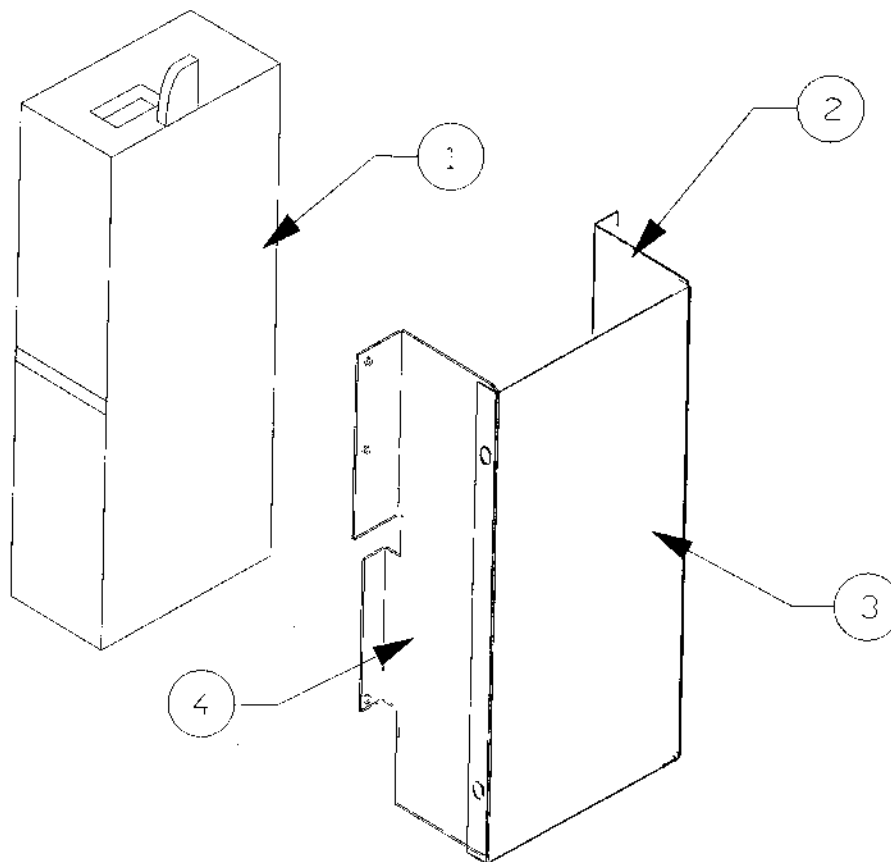


Coin Insert, Keypad and Display Readout Installation

ITEM	PART NUMBER	QTY	DESCRIPTION
1	4200659	1	Readout Window
2	4203037	1	Display Board
3	4025723	4	Stand Off (AP* for Item 2)
4	4203182	1	Display Mounting Bracket
-	8800565	2	8 - 18 X ¼ Phillips (AP for Item 4)
5	4205354	1	Display Board Cover
-	4050423	2	8 - 18 X 3/8 Phillips (AP for Item 5)
6	4201199-001	1	Selector Panel
-	4050747	8	¼ Stamped Hex Nut (AP for Item 6)
7	1102917-004		Keypad Assembly
8	4202678	1	Keypad
9	4003193	1	Backing Plate
10	4025752	1	Coin Insert Molding
11	1211439	1	Coin Chute Weld
-	4050423	4	8 - 18 X 3/8 Phillips (AP for Item 11)
12	4025750	1	Coin Return Button
13	4203218	1	Coin Return Retaining Screw
14	1211458	1	Coin Return Assembly
-	8801204	2	10 - 16 X 3/8 Phillip (AP for Item 14)
15	4021020	1	Spring
16	4202807	1	Coin Return Lever
17	8368294	1	10-24x37/64 Shoulder Screw
18	1211459	1	Bracket Weld Assembly
19	4025741	21	Push Button
Not	4020859-000	1	Coin Return Label
Shown	1211460	1	Display Harness Assembly
	1211315	1	Keypad Harness Assembly

* AP = Attaching Part

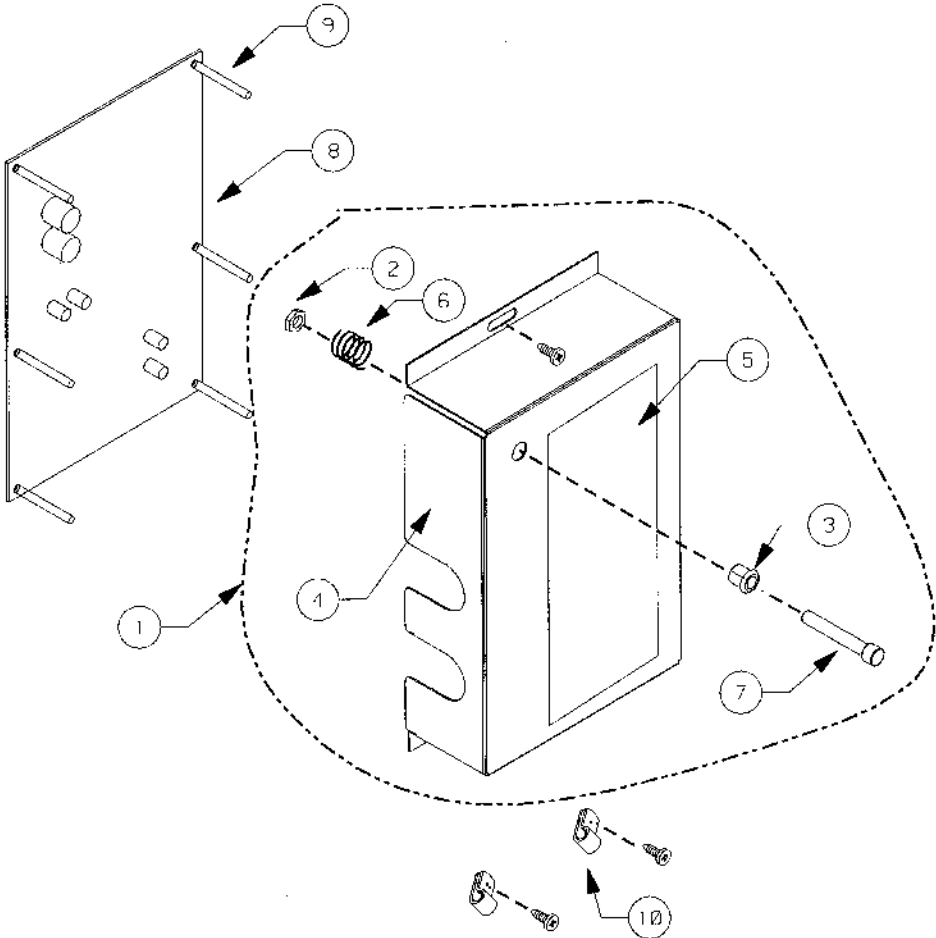
Coin Mechanism Options



ITEM	PART NUMBER	QTY	DESCRIPTION
	1212012		COINCO Coin Mechanism Installation
	1212010		No Coin Mechanism Installation
	1212011		MARS Coin Mechanism Installation
1	4200419	1	Coin Mechanism - 9302L COINCO
	4200732	1	Coin Mechanism - TRC-6010 MARS
	4205042-xxx	1	Coin Mechanism - International - Specify
-	4050240	3	8-32x3/8 Phillips PH MS (AP* for Item 1)
2	4207087	1	Coin Mechanism Cover - Left
-	4050423	2	8 - 18 X 3/8 Phillips PH Type AB (AP for Item 2)
3	4207088	1	Coin Mechanism Cover - Front
-	4050423	2	8-18x3/8 Phillips PH Type AB (AP for Item 3)
4	4207089	1	Coin Mechanism Cover - Right
-	4050423	2	8 - 18 X 3/8 Phillips PH Type AB (AP for Item 4)
-	8341870	1	1/4x20 Thumb Nut (AP for Item 4)
Not Shown	8324099-6	1	Cable Clamp
	4050423	1	8 - 18 X 3/8 Phillips PH Type AB (AP for Prev. Item)
	1211464	1	Coin Mechanism Harness (COINCO Mech., No Mech.)
	4200705	1	MS-1600 Data Harness (EXECUTIVE Mech.)
	4200709	1	MS-1600 Power Harness (EXECUTIVE Mech.)

* AP = Attaching Part

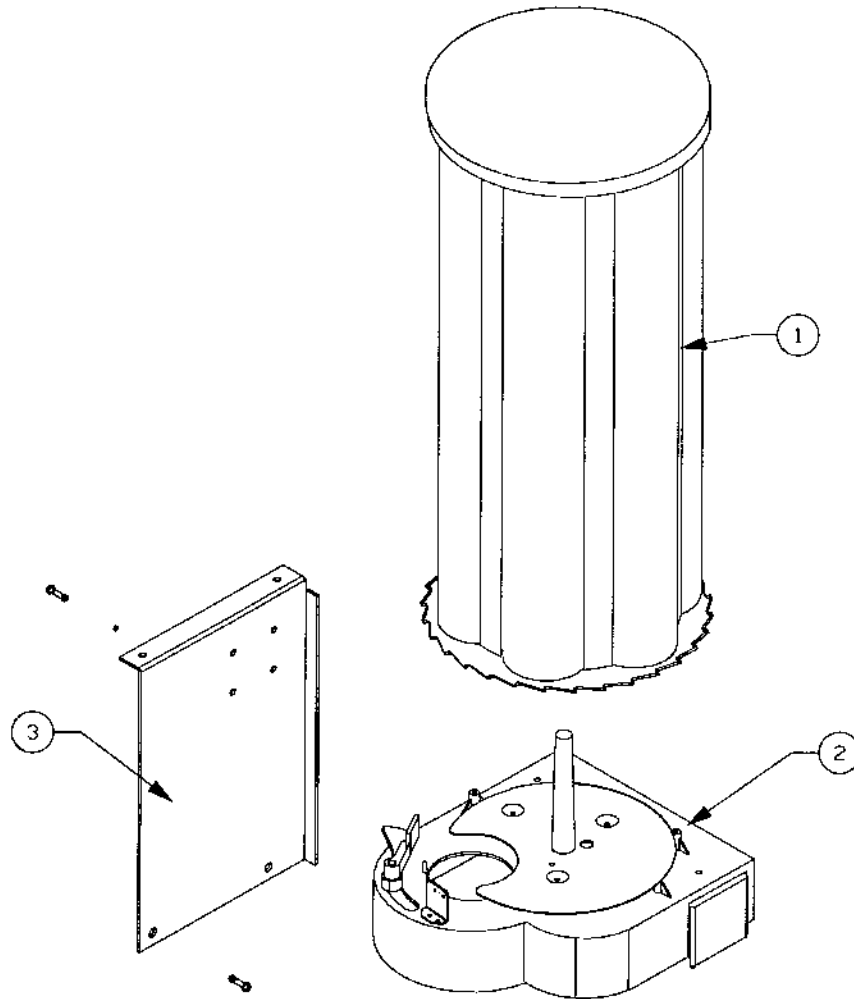
Control Board Installation



ITEM	PART NUMBER	QTY	DESCRIPTION
1	1212136		Control Board Cover Assembly
2	4203477	1	¼ Hex Nut (AP* for Item 7)
3	4203181	1	¼ ID Snap Bushing (AP for Item 7)
4	4202589	1	Board Cover
-	4050202	1	8 - 18 X ½ Phillips Tek (AP for Item 4)
5	4202679	1	Service Instructions Label
6	4021017	1	Spring
7	4203144	1	Mode Button
8	4203035-004	1	Control Board
9	4025723	6	Stand Off (AP for Item 8)
10	7090002-713	2	¼" Cable Clamp
-	8801204	2	10 - 16 X 3/8 Phillip (AP for Item 10)

* AP = Attaching Part

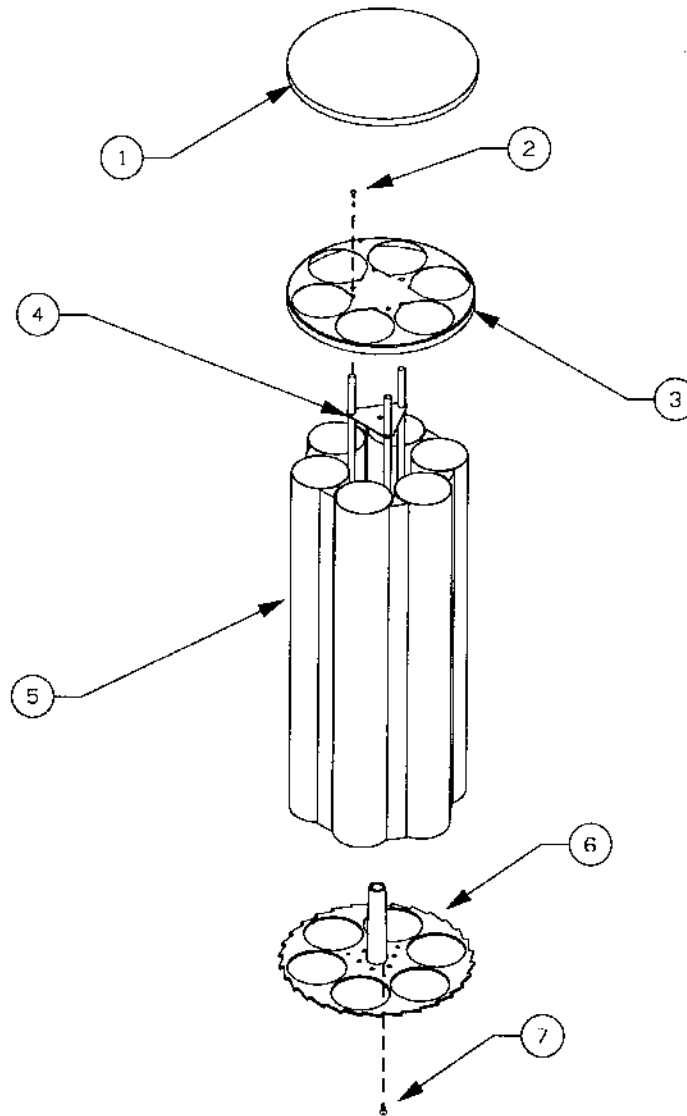
Cup Drop Installation



ITEM	PART NUMBER	QTY	DESCRIPTION
1	1123062	1	6 Column Turret Assembly – See Next Page
2	1123111-18	1	Cup Drop Assembly – 7 Oz. Sq. – See Page 18
	1123111-19	1	Cup Drop Assembly – 7 Oz. Tall
	1123111-20	1	Cup Drop Assembly – 9 Oz. Hot
-	8801360	4	1/4" - 20 X 1/2 Phillips HH Type T (AP* for Item 2)
-	7200729-004	4	#10 Flat Washer - Zinc Plated (AP for Item 2)
3	4202680	1	Cup Drop Mounting Bracket
-	8800364	2	10 - 24 X 1/2 Phillips PH Machine Screw – LW (AP for Item 3)

* AP = Attaching Part

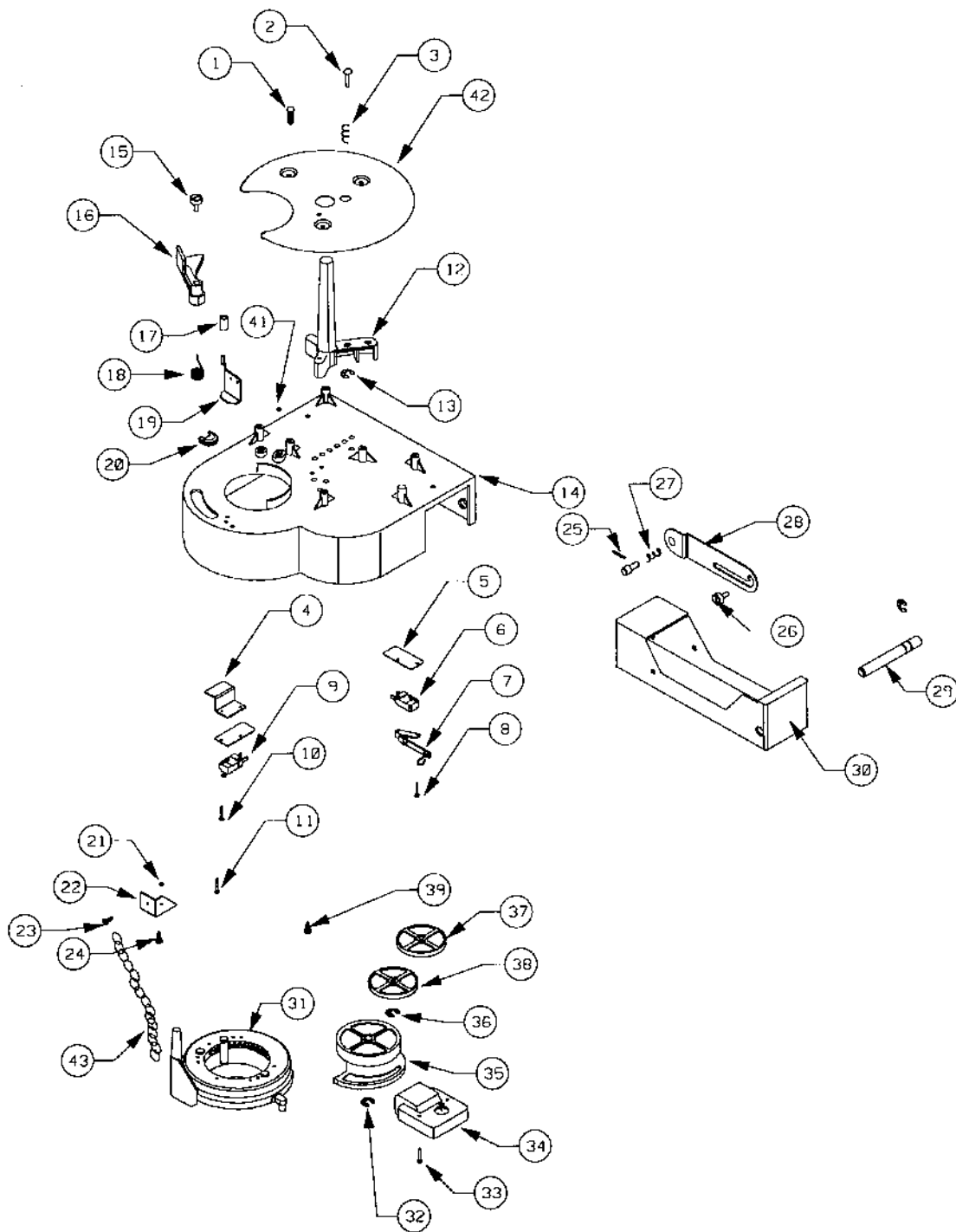
Cup Turret Assembly



ITEM	PART NUMBER	QTY	DESCRIPTION
	1123062		6 Column Turret Assembly
1	8368757	1	Cup Drop Lid
2	8801319	3	8 - 32 X 3/8 Phillips PH Taptite (AP* for Item 3)
3	8368318	1	Outer Ring
4	1123930	1	Support Weld Assembly
5	8368379	6	Cup Tube
6	8368315	1	Base
7	8801319	3	8 - 32 X 3/8 Phillips PH Taptite (AP for Item 6)

* AP = Attaching Part

Cup Drop Assembly



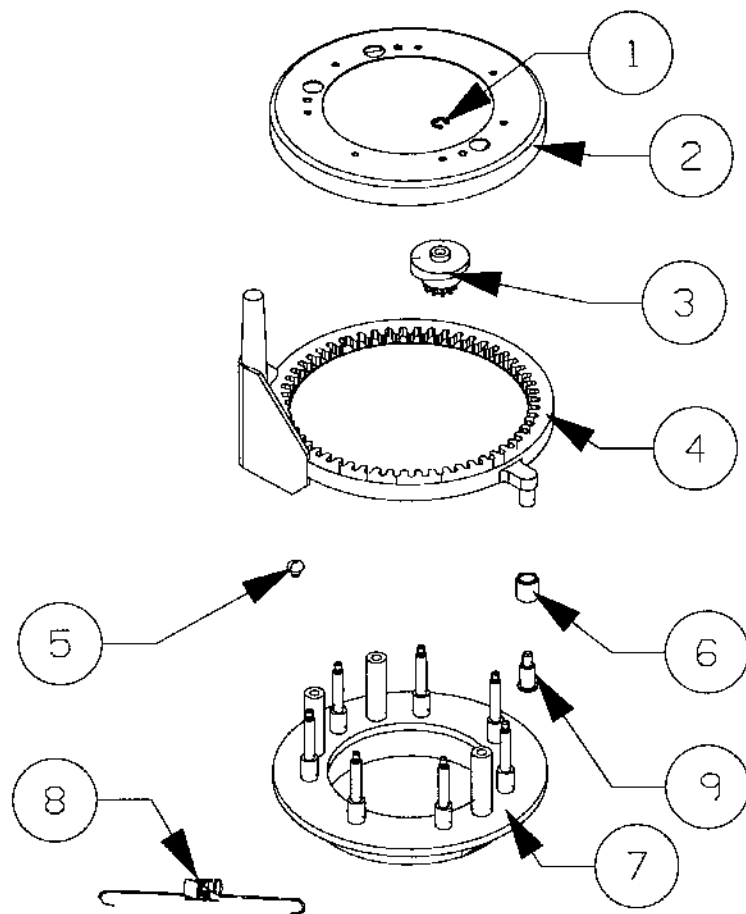
ITEM	PART NUMBER	QTY	DESCRIPTION
1123111-18			Cup Drop Assembly – 7 Oz. Sq.
1123111-19			Cup Drop Assembly – 7 Oz. Tall
1123111-20			Cup Drop Assembly – 9 Oz. Hot

Cup Drop Assembly

ITEM	PART NUMBER	QTY	DESCRIPTION
1	8801319	3	8 - 32 X 3/8 Phillips PH MS - LW
2	8368484	1	Stop Plunger
3	8368295	1	Spring - SS Type 302
4	8368241	1	Cam Switch Bracket
5	8328871	2	Insulation
6	8368299	1	Switch
7	8368296	1	Actuator Switch
8	8800032	2	4 - 40 X 1 1/8 Phillips PH MS
9	8337853	1	Switch
10	8801332	2	4 - 40 X 3/4 Phillips PH Taptite
11	8801319	2	8 - 32 X 3/8 Phillips PH MS - LW
12	8368245	1	Turret Shaft
13	8801077	1	1/2" E-Ring
14	1123918	1	Cup Drop Base
15	8368294	2	10 - 24 X 37/64 Shoulder Screw
16	8368994	1	Index Pawl
17	4208280	1	Pawl Arm Spacer
18	8368409	1	Index Pawl Spring
19	1131254	1	Anti-Backup Assembly
-	8801319	2	8 - 32 X 3/8 Phillips PH Taptite (AP* for Item 19)
20	8379110	1	Cup Drop Stop
21	8800957	1	10 - 24 Hex Nut w/ ETW
22	8371723	1	Chain Bracket
23	8801319	1	8 - 32 X 3/8 Phillips PH MS - LW
24	8800364	1	10 - 24 X 1/2 Phillips PH MS
25	8801277	1	1/16 X 1/2 Roll Pin SS
26	8368246	1	Latch Stud
27	8368295	1	Spring - SS Type 302
28	8368400	1	Cup Drop Latch
-	8368294	1	10 - 24 X 37/64 Shoulder Screw (AP for Item 28)
29	8368314	1	Pivot Shaft
-	8801084	1	1/2 E-Ring (AP for Item 29)
30	4202424	1	Cup Drop Support
31	1123113-xxx	1	Cup Ring Assembly - See Page 20
-	8801336	3	8 - 32 X 2 Phillips PH Taptite (AP for Item 31)
32	8801081	1	3/8" E-Ring
33	8801390	2	6 - 32 X 1 Phillips PH Taptite
34	8368320	1	Cup Drop Motor
35	8368308	1	Cam Gear
36	8801331	2	7/32 Retainer Ring
37	8368309	1	Gear - Nylatron
38	8368309-1	1	Gear - Nylon-Brown
39	8801356	1	1/4 - 20 X 5/8 Phillips TH Type T
41	4050517	2	4 - 40 Hex Nut Style 2
42	8368457	1	Cup Rest
43	8341478	1	Chain - 15 Link
Not Shown	1123125	1	Cup Drop Harness Assembly

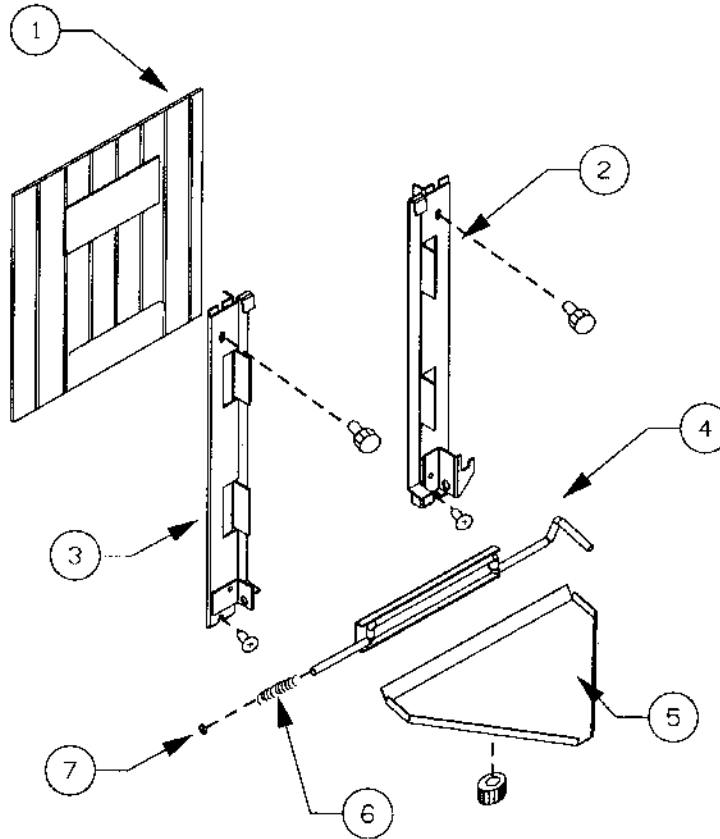
* AP = Attaching Part

Cup Ring Assembly



ITEM	PART NUMBER	QTY	DESCRIPTION
	1123113		Cup Ring Assembly - 7 Oz. Squat
	1123113-1		Cup Ring Assembly - 7 Oz. Tall
	1123113-2		Cup Ring Assembly - 9 Oz. Hot
1	8801067	3	1/8" Retaining Ring
2	CM14-4026	1	Cup Drop Cam Cover
3	D1-3006	7	Cam - 7 Oz Squat - Red
	D1-3007	7	Cam - 9 Oz Hot - Green
	D1-3005	7	Cam - 7 Oz Tall - Pink
4	8368316	1	Gear Ring
5	8369049	6	Stud Support
6	8371775	1	Roller
7	1123917	1	Cup Ring Base Assembly
8	8370715	1	Spring - 3 15/32 18 Coil
9	8371774	1	10 - 24 X 1/4 Shoulder Screw

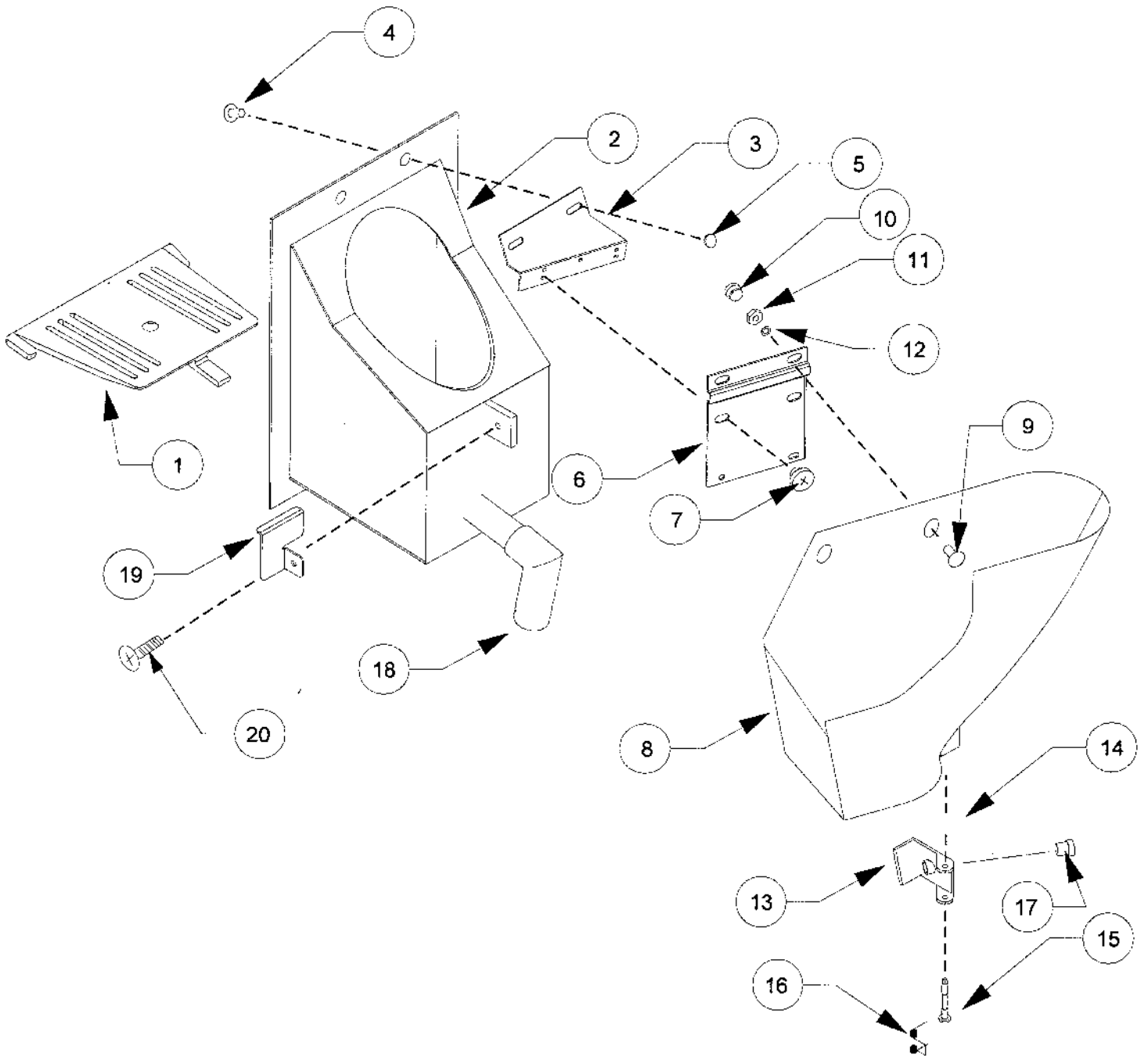
Cup Delivery Installation



ITEM	PART NUMBER	QTY	DESCRIPTION
	1212954		Cup Delivery Installation
1	8341870-001	1	Vend Door
2	1119540-1	1	Bracket Weld Assembly – Left
-	8801204	1	10 - 16 X 3/8 Phillips TH w/ETW Type B (AP* for Item 2)
-	8045133	1	8 - 32 X 3/8 Thumb Screw (AP for Item 2)
3	1119539-1	1	Bracket Weld Assembly– Right
-	8801204	1	10 - 16 X 3/8 Phillips TH w/ETW Type B (AP for Item 3)
-	8045133	1	8 - 32 X 3/8 Thumb Screw (AP for Item 3)
-	8340561	1	1/4 - 20 Thumb Nut (AP for Item 3)
4	1128718	1	Retainer Weld
5	1117513-1	1	Drip Tray Weld
-	8354730	1	10-24 Thumb Nut (AP for Item 5)
6	8331008	1	Compression Spring
7	8801077	1	1/4 E-Ring Retaining (AP for Item 6)
Not	1130938		Cup Chute Assembly – See Page 23
Shown	1130938-001		Cup Chute Assembly – See Page 23

* AP = Attaching Part

Cup Chute Assembly

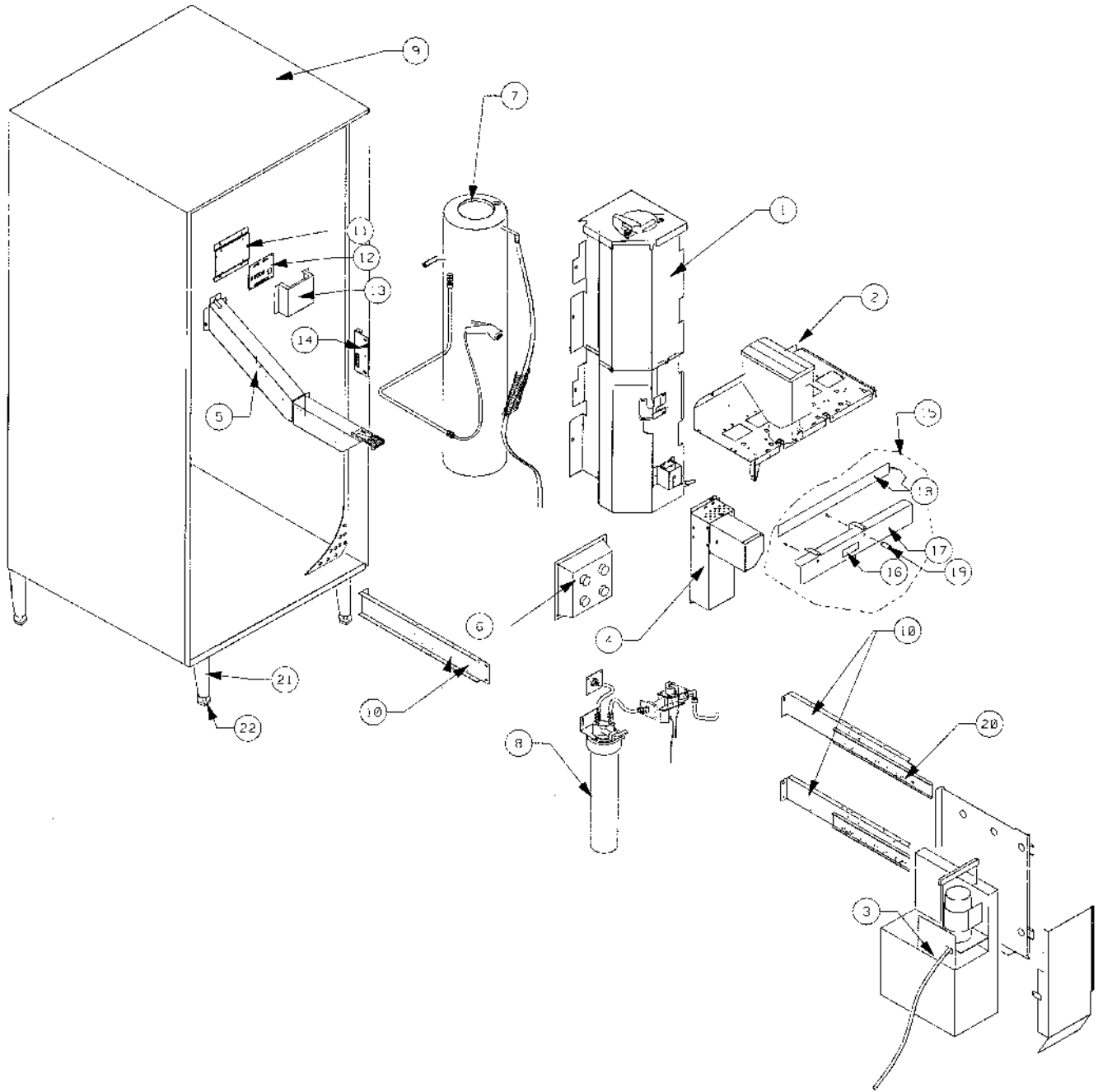


Cup Chute Assembly

ITEM	PART NUMBER	QTY	DESCRIPTION
	1130938		Cup Chute Assembly – 7 Oz. Squat
	1130938-001		Cup Chute Assembly – All Others
1	8331012-4	1	Cup Chute Grill
2	8338826-1	1	Cup Station Housing
3	8383016	1	Cup Station Bracket
4	8356103	2	10 - 24 X ½ Carriage Bolt – SS (AP* for Item 3)
5	8354730	2	10 - 24 Thumb Nut (AP for Item 3)
6	4203000	1	Chute Bracket (1130938-001 Only)
7	8801204	2	10 - 16 X 3/8 Phillips TH w/ ETW (AP for Item 6)
8	8383018	1	Cup Chute
9	8354641	2	¼ - 20 X 5/8 Carriage Bolt – SS (AP for Item 8)
10	8340561	2	¼ - 20 Thumb Nut (AP for Item 8)
11	8801209	2	¼ - 20 Hex Jam Nut – SS (AP for Item 8)
12	8801215	2	5/16 Flat Washer (AP for Item 8)
13	8338820-3	1	Side Gate
14	8801073	1	3/16 E-Ring – Retaining (AP for Item 13)
15	8339132	1	Hinge Pin
16	8338818	1	Spring - .218 Dia.
17	8339133	1	5/16 - 24 X 3/16 Adjusting Screw
18	8356422	1	Overflow Spout
19	4205435	1	Cup Chute Support – 7 Oz. Squat Only
20	4050202	1	8 - 18 X ½ Phillips HWH Tek (AP for Item 19)

* AP = Attaching Part

COMPLETE CABINET ASSEMBLY

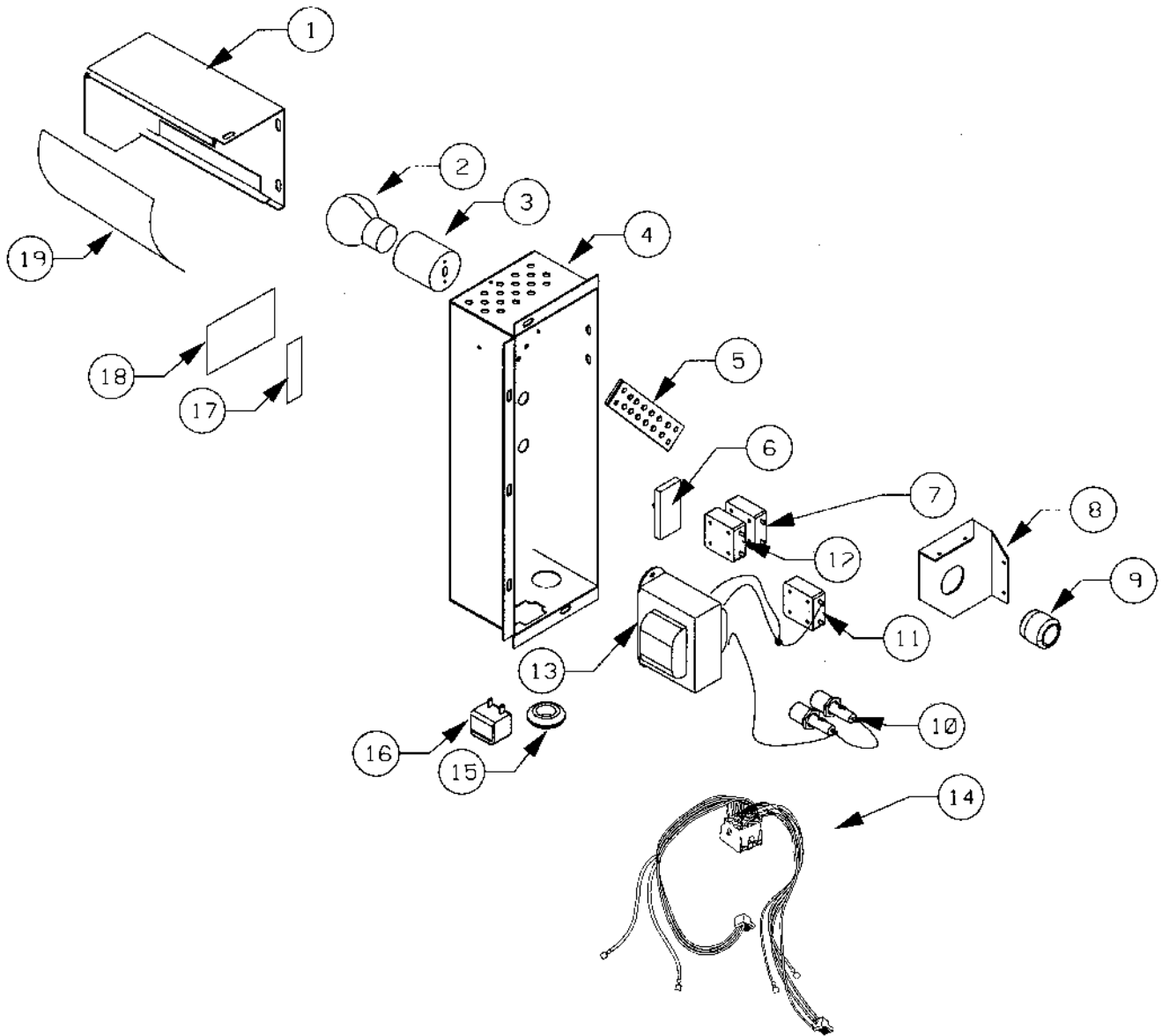


COMPLETE CABINET ASSEMBLY

ITEM	PART NUMBER	QTY	DESCRIPTION
1		1	Water Shelf and Cover – See Pages 32
2		1	Ingredient Shelves - See Pages 36 - 49
3		1	Brewer Assembly (Fresh Brew) – See Page 50
4		1	Power Box Assembly – See Page 26
5		1	Spouts and Spout Assembly – See Page 28
6		1	Blower Assembly – See Page 35
7		1	Water Tank Assembly– See Page 30
8		1	Water Filter Assembly – See Page 29
9	1212903	1	Cabinet Weld
10	4202440	2	Shelf Support (Freeze Dried)
	4202440	3	Shelf Support (Fresh Brew)
-	8801204	8	10-16x3/8 Phillips TH w/ETW (AP* for Item 10) (Freeze Dried)
-	8801204	12	10-16x3/8 Phillips TH w/ETW (AP for Item 10) (Fresh Brew)
11	4203033	1	VAC Driver Board Support
-	8801204	4	10-16x3/8 Phillips TH w/ETW (AP for Item 11)
12	4203036	1	VAC Driver Board
-	4025723	4	Stand Offs (AP for Item 12)
13	4203214	1	VAC Driver Board Cover
-	8801204	3	10-16x3/8 Phillips TH w/ETW (AP for Item 13)
14	4202442	1	Cabinet Latch
-	8801204	2	10-16x3/8 Phillips TH w/ETW (AP for Item 14)
15	1212950		Long Heater Install
16	8368357	1	Label – Hot
17	1212972	1	Heater Bracket Weld – Long
18	4207208	1	Ingredient Heater
19	8366792	2	Knob - #8-32
-	8800090	2	8-32x1/4 Phillips PII MS - SS (AP for Item 19)
20	4205392	2	Drawer Slides (Fresh Brew)
-	8800638	12	10-16x3/8 Phillips PH Type B (AP for Item 20)
21	1131275	4	Leg Weld
-	8801388	12	5/16-18x3/4 HWH Type D (AP for Item 21)
22	8363374	4	Leg Levelers
Not	1211306-001	1	Cabinet Harness
Shown	1211463-002	1	VAC Board Harness (Upper Cabinet Harness)
	1214298	1	Screen Rivet Assembly

* AP = Attaching Part

Power Box Assembly



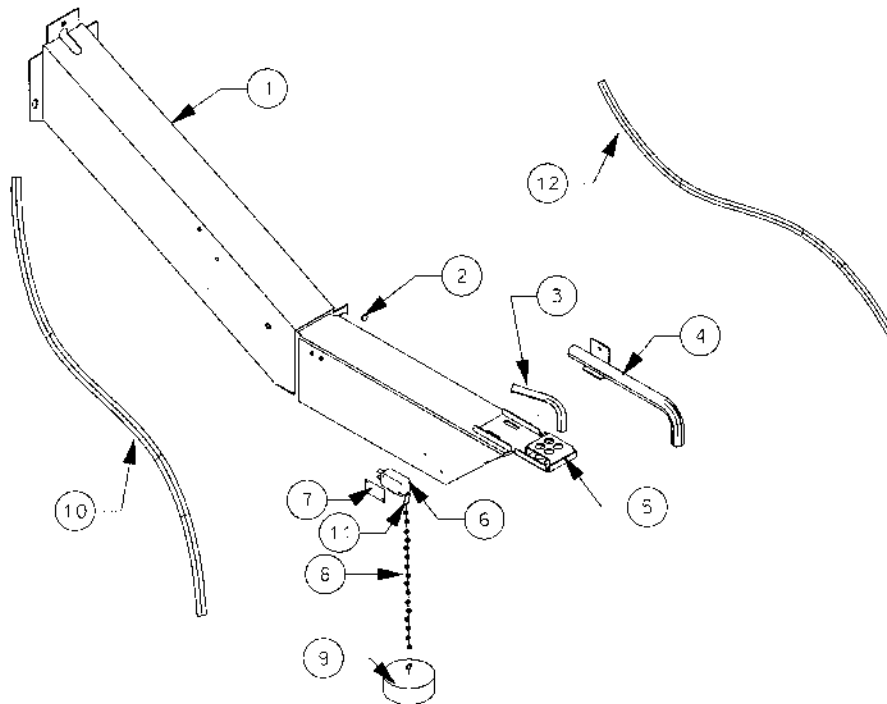
ITEM	PART NUMBER	QTY	DESCRIPTION
	1211307-002		Power Box Assembly 115 V
	1211307-003		Power Box Assembly 230 V
1	1129459	1	Shield Weld
	8801204	3	10-16x3/8 Phillips TH w/ETW (AP* for Item 1)

* AP = Attaching Part

Power Box Assembly

ITEM	PART NUMBER	QTY	DESCRIPTION
2	8379785	1	Lamp Incandescent – 115 V
	8379785-001	1	Lamp Incandescent – 230 V
3	1211309	1	Lamp Socket Assembly
-	8800060	2	6-32x3/8 Phillips PH MS (AP for Item 3)
4	4205533	1	Power Box
-	1211465	1	16" Ground Wire – 115 V – Green (Not Shown)
-	1211465-002	1	16" Ground Wire – 230 V (Not Shown)
-	4050247	1	8-32x1/2 Phillips PH MS (AP for Ground Wire)
-	8800956	1	8-32 Hex Nut w/ETW (AP for Ground Wire)
-	8801204	4	10-16x3/8 Phillips TH w/ETW (AP for Item 4)
5	4203273	1	6 Position Terminal Block
-	4050262	4	8-32x3/4 Phillips PH MS (AP for Item 5)
-	8800956	4	8-32 Hex Nut w/ETW (AP for Item 5)
6	4203272	1	DPST Toggle Switch
7	8379259-2	1	20 Amp Circuit Breaker
8	8379331-000	1	Service Cord Bracket – 115 V
	8379331-001	1	Service Cord Bracket – 230 V
-	8800565	4	8-18x1/4 Phillips TH Type B (AP for Item 8)
9	8327699-7	1	Bushing
	4033686	1	Bushing – 230 V
10	8348036-1	2	Fuse Post
-	4203216	2	Fuse – Fast 5A 250V (Not Shown)
11	4033071	1	3 Amp Circuit Breaker
12	4033620	1	5 Amp Circuit Breaker
13	1101657	1	Transformer Assembly – 115 V
	1211436	1	Transformer Assembly – 230 V
-	1211468	1	Switch Breaker Jumper – 115 V – Black/White (Not Shown)
-	4050247	2	8-32x1/2 Phillips PH MS (AP for Item 13)
-	8800956	2	8-32 Hex Nut w/ETW (AP for Item 13)
14	1211308-001	1	Power Box Harness – 115 V
	1211308-003	1	Power Box Harness – 230 V
-	1211465-001	1	13" Ground Wire – 115 V – Green (Not Shown)
-	1211465-003	1	13" Ground Wire – 230 V (Not Shown)
15	4033672	1	Grommet 11/16 ID
16	4205526	1	Outlet
17	4203205	1	ON/OFF Label
18	4205057	1	Warning Label – 115 V
	4206717	1	Warning Label – 230 V
19	8379327	1	Lens
Not Shown	8324099-6	2	Clamp - 3/8 X 1/2
	8800565	2	8-18x1/4 Phillips TH Type B (AP for Prev. Item)
-	4020872	1	Warning Tag – 115 V
-	8340829	1	Service Cord – 115 V
	4020872-001	1	Warning Tag – 230 V
	4202512-003	1	Service Cord – 230 V
-	1211467	1	6" Neutral Line – White
-	1211467-001	1	6" Electrical Line – Black
-	1211466	1	6" Main Line – Black
-	1211466-001	1	9" Main Line – Black
	1212046	1	Transformer harness – 230 V Only

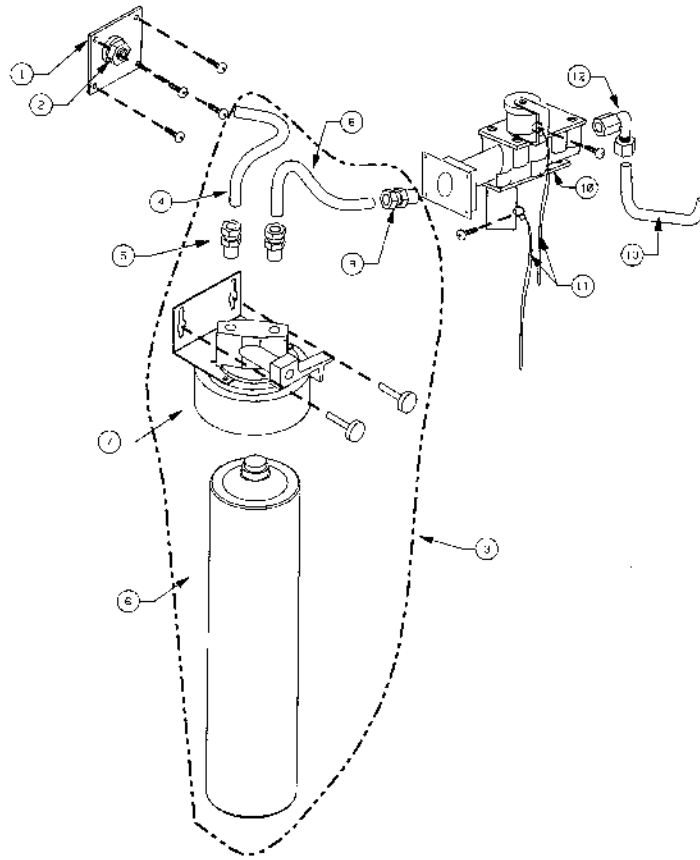
Spouts and Spout Assembly



ITEM	PART NUMBER	QTY	DESCRIPTION
1	1211240	1	Boom Arm Rivet Assembly
-	8801204	3	10-16x3/8 Phillips TH w/ ETW Type B (AP* for Item 1)
2	8340561	1	1/4-20 Thumb Nut
3	8379083	A/R*	SS Outlet tubes
-	4033712	1	Cable Tie (AP for 3)
4	1211296	1	Overflow Weld Assembly
-	8801204	1	10-16x3/8 Phillips TH w/ ETW Type B (AP for Item 4)
5	1212752	1	Nozzle Mounting
-	8800565	2	8 - 18 X 1/4 Phillips (AP for Item 5)
-	8800956	2	8-32 Hex Nut w/ ETW (AP for Item 5)
6	4207290	1	Overflow Switch Double with Hole
-	8337588-1	1	Twin Nut (AP for Item 6)
7	8340025	1	Insulator
-	8800032	2	4-40x18 Phillips PH MS (AP for Items 6 & 7)
8	8346801-8	1	Bead Chain - 16"
9	4025407	1	Container Float
10	4202655-500	3.83'	Rubber Tubing - Overflow
11	4207032	1	Bead Chain Connector
12	4025409-005	1	Hose - from soup - 16-3/4
	4025409-004	2	Hose - from tea, coffee - 12-1/8
	4025409-003	1	Hose - from chocolate
Not Shown	7090002-713	2	3/4" Cable Clamp
	4050240	2	8 - 32 X 3/8 Phillips PH Machine Screw (AP for Prev. Item)
	8800956	2	8-32 Hex Nut w/ ETW (AP for Prev. Item)

* AP = Attaching Part
 * A/R = As Required

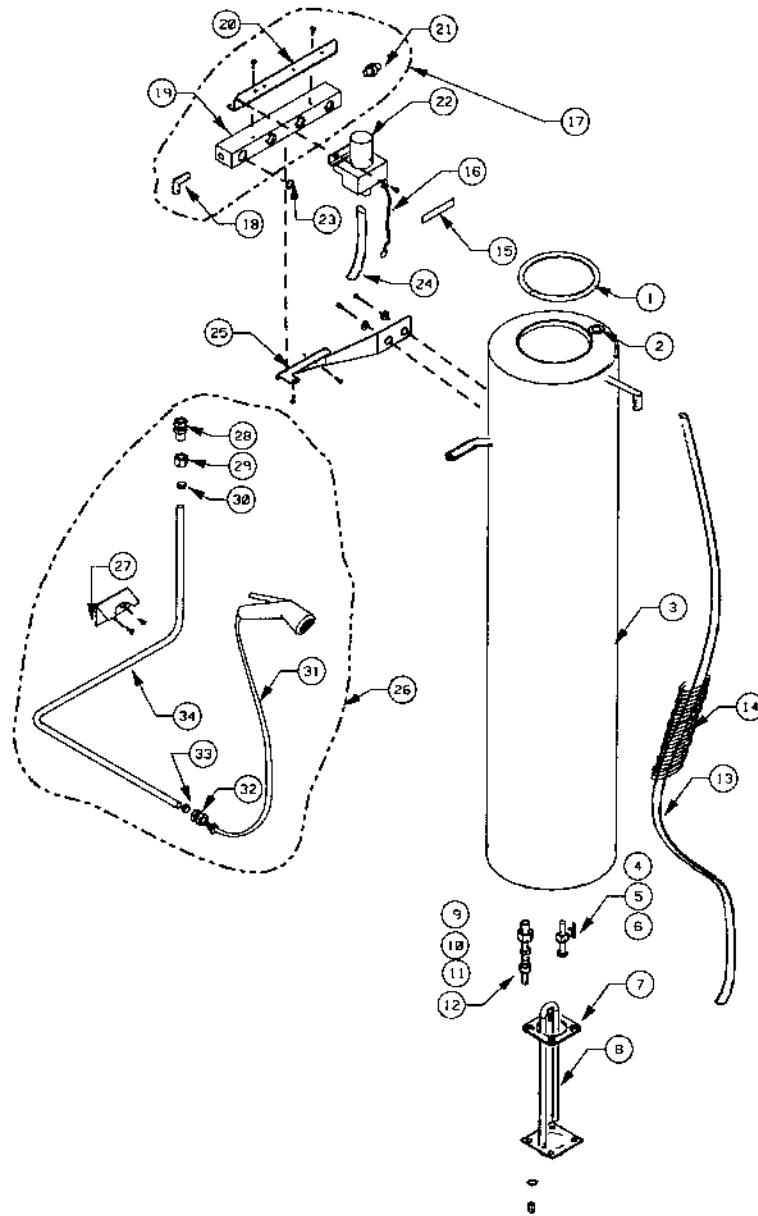
Water Filter Installation



ITEM	PART NUMBER	QTY	DESCRIPTION
1	1111325	1	Inlet Weld Assembly
-	8801204	4	10-16x3/8 Phillips TH Type B w/ETW (AP* for Item 1)
2	8320827-2	1	3/8 TU x 3/8 MP Conn.
3	1211245		Water Filter Assembly
4	4202478	1	Inlet Tube
5	8320827-2	2	3/8 TU x 3/8 MP Conn.
6	8359993-1	1	Purifier Cartridge
7	8359992	1	Purifier Head
-	8801204	2	10 - 16 x 3/8 Phillips TH w/ ETW (AP for Item 6)
-	4050548-001	2	Screw Covers
8	4202477	1	Outlet Tube
9	8320827-2	1	3/8 TU x 3/8 MP Conn.
10	8360738	1	Duel Water Inlet valve
11	1113577-5	2	Ground Wire
-	8801204	2	10 - 16 x 3/8 Phillips TH w/ ETW (AP for Item 10)
12	8321086-1	1	Brass Fitting Elbow
13	4202608	1	Water Tube - Copper - U shaped

* AP = Attaching Part

Water Tank Installation



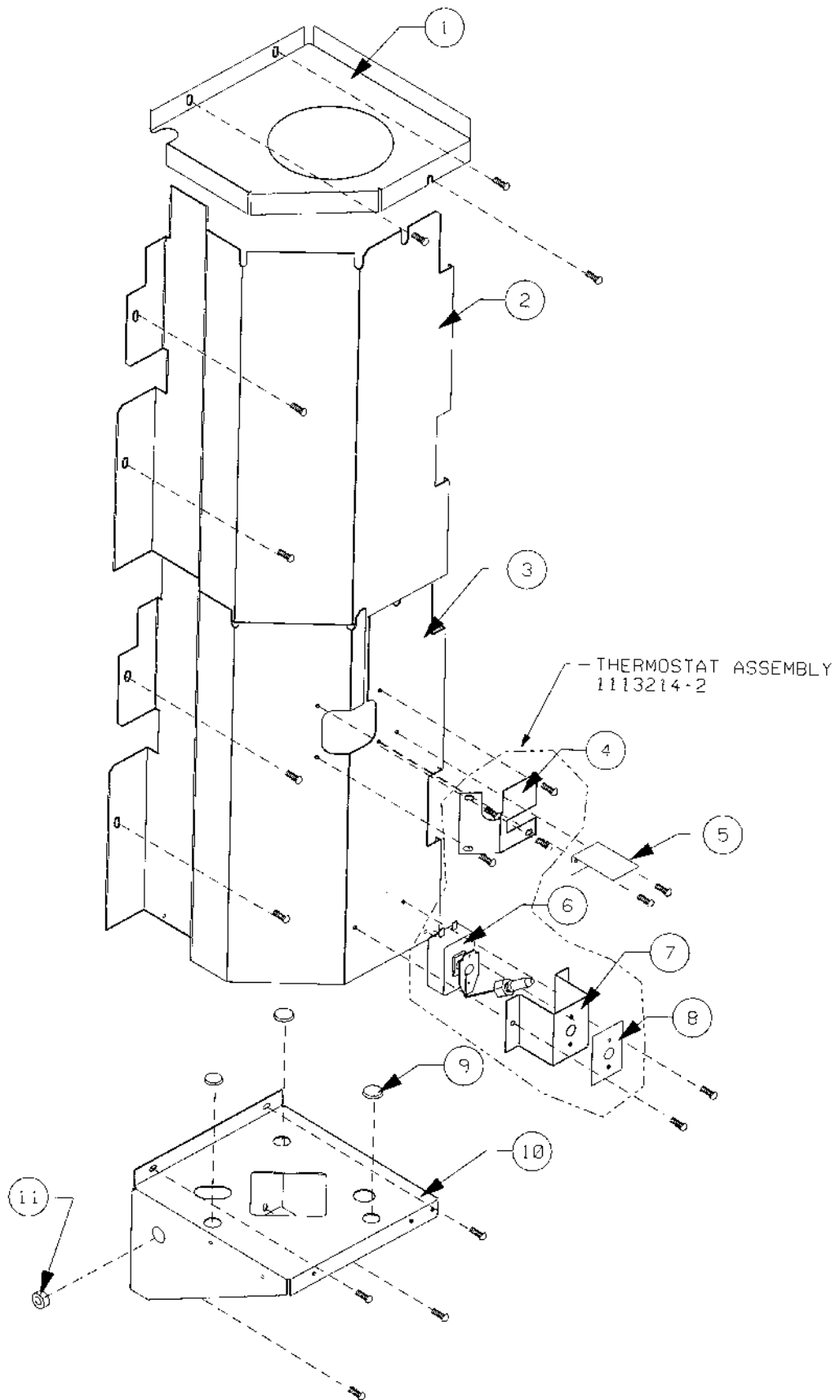
ITEM	PART NUMBER	QTY	DESCRIPTION
	1211295		Water Tank Installation – 115 V
	1211295-001		Water Tank Installation – 230 V
1	8342179-1	1	Tank Gasket
2	8346913	1	Plug Grommet
3	1128849-001	1	Tank Weldment
4	8340849	2	3/4" Flat Washer
5	8346993	1	Needle Valve
6	8346506	2	3/4" – 27 Hex Nut

Water Tank Installation

ITEM	PART NUMBER	QTY	DESCRIPTION
7	8620641	1	Heater Gasket
8	8368840	1	Immersion Heating Element 115 V
	8368840-2	1	Immersion Heating Element 230 V
-	8801016	4	¼" Flat Washer (AP* for Item 8)
-	8801209	4	¼ x 20 Hex Jam Nut – SS (AP for Item 8)
9	8359590-1	1	3/8 F x ¼ HPT Adapter
10	8382240	1	Double Check Valve
11	8383309	1	¼ F x 3/8 FPT Reducer
12	8383310	1	Connector – Male 3/8 x ¼ NPT
13	4202655-500	3.83'	Rubber Tubing - Overflow
14	8370932	1	Hose Spring - 4 ½"
15	8332655	1	Valve Label – Tea
	8332656	1	Valve Label – Soup
	8090619	1	Valve Label – Choc
	8332657	1	Valve Label – Coffee
16	1113577-4	4	Grounding Strap
-	8801204	4	10 - 16 x 3/8 Phillips TH w/ ETW (AP for Item 16)
17	1212686		Manifold Assembly
18	4060688	1	Elbow - 3/8 T x ¼ MPT
19	4202423	1	4-Way Brass Manifold
20	4206265	1	Manifold Bracket
-	8801204	2	10 - 16 x 3/8 Phillips TH w/ ETW (AP for Item 20)
21	4207801	1	3/8 ML NPT ½ Comp
22	4202481	4	Valve
-	8801204	4	10-16x3/8 Phillips TH Type B w/ETW (AP for Item 22)
23	8334554-9	4	O-Ring
24	4025409-009	1	Hose – Manifold to soup – 31-1/4
	4025409-008	1	Hose – Manifold to tea – 30-1/2
	4025409-010	1	Hose – Manifold to coffee – 2.6875'
	4025409-012	1	Hose – Manifold to chocolate = 18" (Fresh Brew)
	8090702-34	1	Hose – Manifold to chocolate – 32" (Freeze Dried)
25	8380407	1	Support Manifold
-	8801204	2	10 - 16 x 3/8 Phillips TH w/ ETW (AP for Item 25)
-	8370729	2	#10 Spring Stl Lock Washer (AP for Item 25)
26	1211304-002		Spray Hose Assembly
27	8353804	1	Hose Guide
-	8801204	2	10-16x3/8 Phillips TH Type B w/ETW (AP for Item 27)
28	8320827-2	1	3/8 TU x 3/8 MP Conn
29	8341257	1	9/16-24 Hex Nut – Special
30	8341258	1	Sleeve
31	8347278	1	Sprayer
-	8370959	1	Locking Clamp – Self Adhesive (AP for Item 31)
32	8383310	1	Connector Male 3/8x1/4 NPT
33	8382270	1	Bushing
34	4206968	1	Copper Tubing
Not Shown	8324099-6	2	3/8x1/2 Clamp
	8801204	2	10-16x3/8 Phillips TH Type B w/ETW (AP for Prev. Item)
	1123475-001	1	Heater Harness
	1211327	1	Valves Harness Assembly

* AP = Attaching Part

Water Tank Shelf and Cover

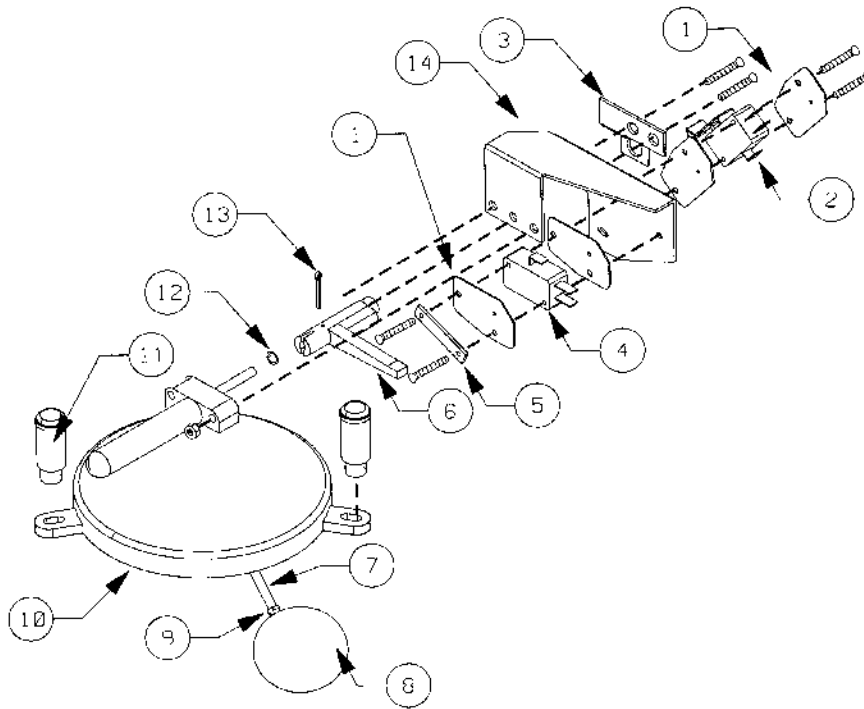


Water Tank Shelf and Cover

ITEM	PART NUMBER	QTY	DESCRIPTION
1	8382409	1	Shroud - Top
-	8801204	3	10 - 16 x 3/8 Phillips TH w/ ETW (AP* for Item 1)
2	4205341	1	Shroud - Upper
-	8324099-6	2	Cable Clamp 3/8 X 1/2"
-	8801204	2	10 - 16 x 3/8 Phillips TH w/ ETW (AP for Item 2)
3	4205340	1	Shroud - Lower
-	8801204	3	10-16x3/8 Phillips TH w/ ETW (AP for Item 3)
-	8324099-6	3	Cable Clamp 3/8 X 1/2"
4	4203825	1	Thermometer Bulb cover
-	8801204	4	10-16x3/8 Phillips TH w/ ETW (AP for Item 4)
5	4203687	1	Hose Support Bracket (Freeze Dried only)
-	8801204	2	10-16x3/8 Phillips TH w/ ETW (AP for Item 5)
6	8354005-3	1	Thermostat
-	8368294	2	10-24X37/64 Shoulder Screw (AP for Item 6)
7	4202480	1	Bracket - Thermostat
-	8801204	2	10 - 16 x 3/8 Phillips TH w/ ETW (AP for Item 7)
8	8354179-001	1	Label - Thermostat
9	8323075	3	Plug Button
10	8379100	1	Water Tank Shelf
-	8801204	4	10-16x3/8 Phillips TH w/ ETW (AP for Item 10)
11	4033654-000	1	Grommet
Not Shown	1123475-001	1	Harness Assembly - Heater
-	8324099-2	1	1/4" Cable Clamp (AP for Prev. Item)
-	8801204	2	10 - 16 x 3/8 Phillips TH w/ ETW (AP for Prev. Item)

* AP = Attaching Part

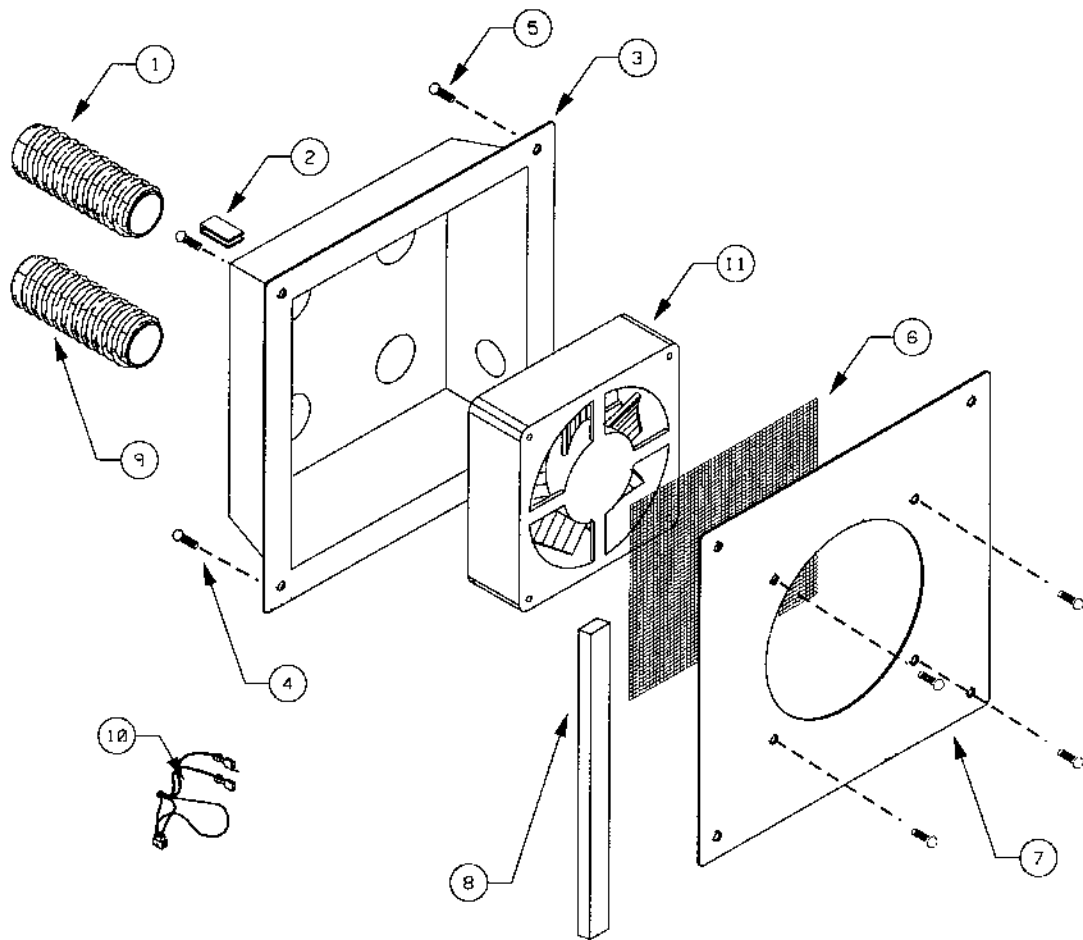
Water Tank Lid Assembly



ITEM	PART NUMBER	QTY	DESCRIPTION
	1123241		Water Tank Lid Assembly
1	8340025	4	Insulator
2	8342452	1	Switch
-	8800027	2	4-40x5/8 Phillips PH Machine Screw (AP* for Item 2)
	8800954	2	4-40 Hex Nut w/ ETW (AP for Item 2)
3	8369075	1	Pivot Bracket
-	8800728	2	8-32x1/4 Phillips PH Type D (AP for Item 3)
4	4033914	1	Stack Switch - Inside
-	8800027	2	4-40x5/8 Phillips PH Machine Screw (AP for Item 4)
5	8337588-1	1	4-40 Twin Spring Nut (AP for Item 4)
6	8368596	1	Actuator Switch - Outside
7	8368595-001	1	Float Rod
8	4203097	1	Float
9	8800903	1	6-32 Hex Nut
10	8368594	1	Tank Cap
-	4050262	2	8-32x3/4 Phillips PH Machine Screw (AP for Item 10)
-	8800905	2	8-32 Hex Nut Style 2 (AP for Item 10)
11	8366792	2	Knob #8-32
12	8376097	1	O-Ring
13	8489701	1	1/16x5/8 Cotter Pin
14	8368597	1	Switch Bracket
Not Shown	1123909	1	Float Harness

* AP = Attaching Part

Blower Assembly

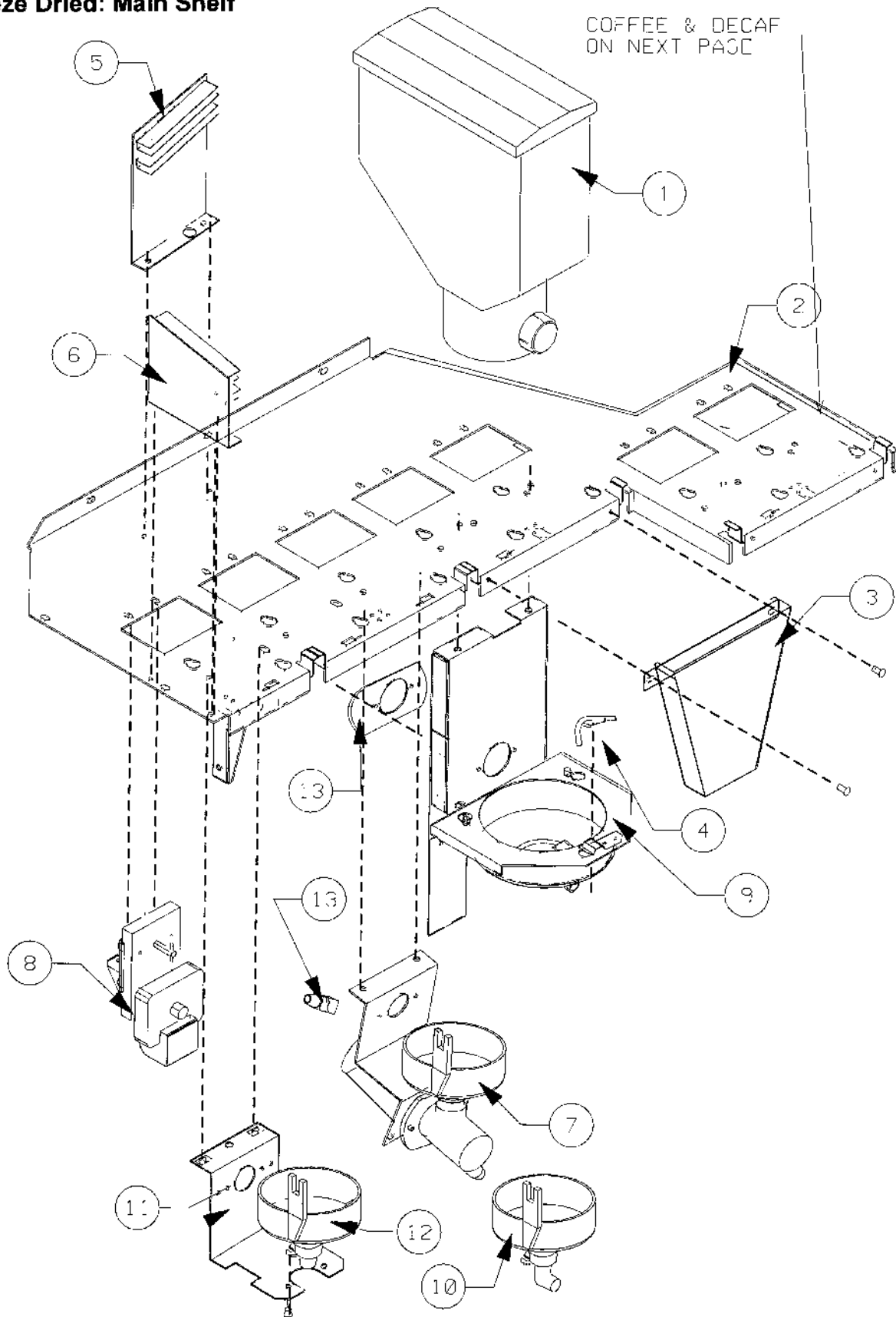


ITEM	PART NUMBER	QTY	DESCRIPTION
1	8342969-1	1	Flexible Tube - 29"
2	8352837	4	10-32 U Type Spring NT
3	4207165	1	Blower Housing
4	8801204	2	10-16x3/8 Phillips TH w/ ETW (AP* for Item 3)
5	8810014	2	12-14 x 1/2 Phillips TH Type AB (AP for Item 3)
6	4004634	1	Dust Filter Screen
7	4207289	1	Fan Mounting Bracket
-	8801204	4	10-16x3/8 Phillips TW w/ ETW (AP for Item 8)
8	4060006-500	2.75'	1/4"x1/4" Foam Tape
9	8342969-2	3	Flexible Tube - 23"
10	4207296	1	Fan Adapter Harness
11	4208566	1	Evaporator Fan - 115 V
	4034344-001	1	Evaporator Fan - 230 V

* AP = Attaching Part

Ingredient Shelf

Freeze Dried: Main Shelf



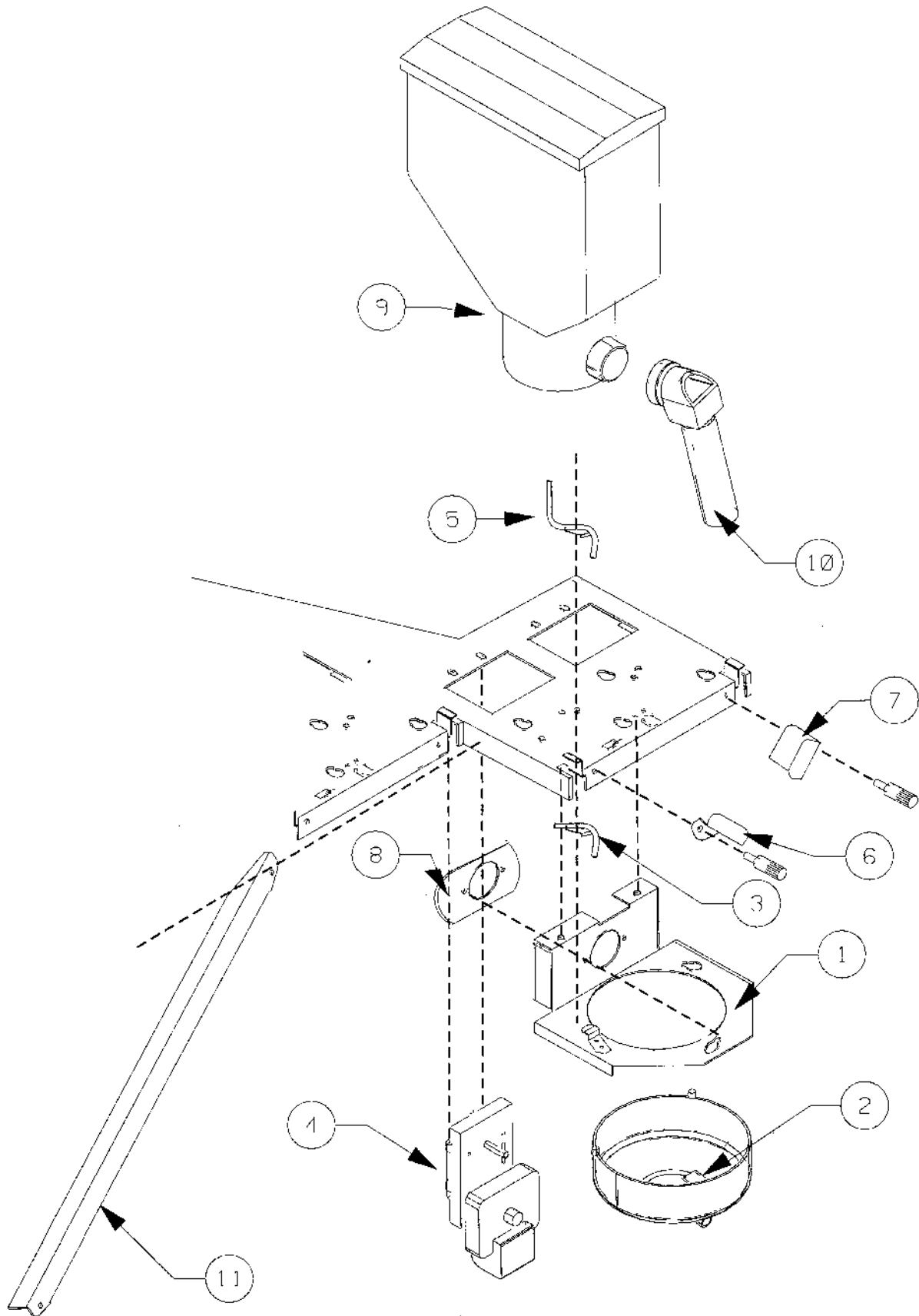
Freeze Dried: Main Shelf

ITEM	PART NUMBER	QTY	DESCRIPTION
1	1114858-7	5	Tall Canister with Agitator – See Page 47
2	1211316	1	Shelf Rivet Assembly
-	8801204	8	10-16x3/8 Phillips TH w/ ETW Type B (AP* for Item 2)
3	1211280	1	Funnel Weld Assembly
	1212747	1	Offset Funnel Weld Assembly (Coffee Whipper Option)
-	8369074	2	Thumb Screw #10-32 (AP for Item 3)
4	1122281	2	Nozzle Weld Assembly – Passivate (Tea)
-	8369074	2	Thumb Screw #10-32 (AP for Item 4)
5	1211159-003	1	Hose Bracket – Tall
-	4050240	2	8 - 32 X 3/8 Phillips PH Machine Screw (AP for Item 5)
6	1211159-002	1	Hose Bracket – Short
-	4050240	3	8 - 32 X 3/8 Phillips PH Machine Screw (AP for Item 6)
-	8324099-6	1	Cable Clamp - 3/8 X 1/2
7	1211297-001	1	Chocolate Whipper Assembly – See Page 46
-	8800364	2	10-24x1/2 Phillips PH MS – LW (AP for Item 8)
8	1115122-9	2	Motor Assembly – See Page 49
-	8800364	4	10-24X1/2 Phillips TH w/ ETW Type -D (AP for Item 8)
9	1211302	1	Mixing Bowl Assembly – See Page 48
-	8800704	2	10-24X1/2 Phillips TH w/ ETW Type -D (AP for Item 9)
10	1211294	1	Mixing Bowl Assembly Soup
	1211294-001	1	Mixing Bowl Assembly – Tea
-	8330164	4	8-32 Thumb Nut - Brass
11	1211243	2	Bowl Bracket Weld Assembly (Tea, Soup)
-	8330164	2	8-32 Thumb Nut - Brass
	1211294-001	1	Mixing Bowl Assembly – Tea
-	8330164	4	8-32 Thumb Nut - Brass
12	8346990	2	Nozzle (Soup, Tea)
13	8346771-1	2	Outlet Hose – Short (Tea, Soup)
Not Shown	8090618	1	Shelf Label – Sugar
	8332655	1	Shelf Label – Tea
	8332656	1	Shelf Label – Soup
	8090619	1	Shelf Label – Choc.
	8321479	1	Shelf Label – Dry Cream
	1211324-001	1	Ingredient Harness
	8090702-14	1	Rubber Tube - 15 1/2"
	8801204	4	10-16x3/8 Phillips TH w/ETW

* AP = Attaching Part

Ingredient Shelf

Freeze Dried: Coffee and Decaf Coffee Shelf



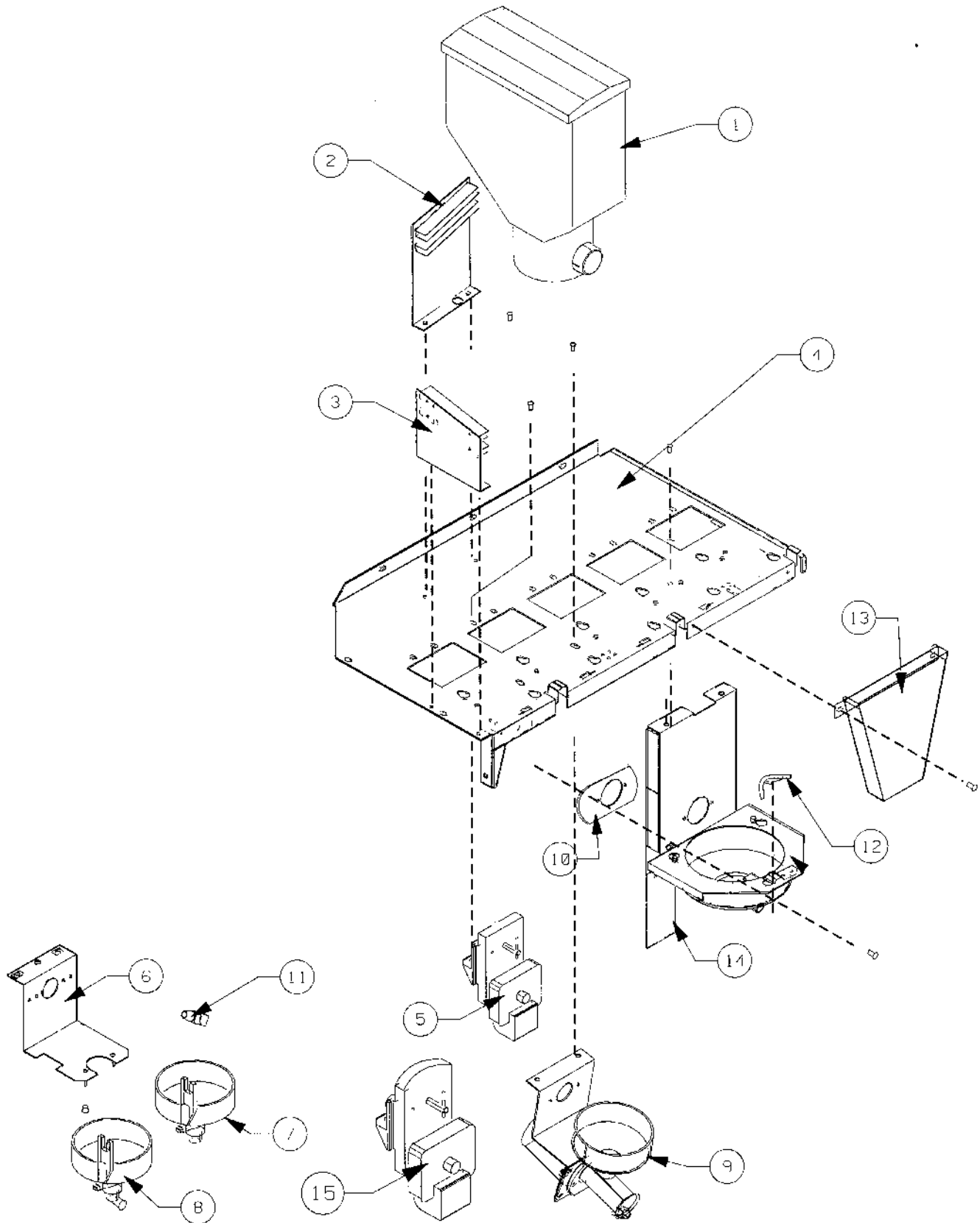
Freeze Dried: Coffee and Decaf Coffee Shelf

ITEM	PART NUMBER	QTY	DESCRIPTION
1	1126599	1	Bracket Rivet Assembly - Bowl
-	8800406	2	10-32 x 1/2 Phillips TH w/ETW (AP* for Item 1)
2	8347010	1	Mixing Bowl
3	1122281	1	Nozzle Weld Assembly
-	8369074	1	Thumb Screw #10-32 (AP for Item 3)
4	1115122-9	2	Motor Assembly - 50Hz, 80 RPM - See Page 49
-	8800638	2	10-16x3/8 Phillips PH Type B (AP for Item 4)
5	1211263	1	Nozzle Assembly Passivate
-	8369074	1	Knob #10-32 (AP for Item 5)
6	4207592	1	Coffee Chute - Left
-	8369074	1	Knob #10-32 (AP for Item 6)
7	4207592-001	1	Coffee Chute - Right
-	8369074	1	Knob #10-32 (AP for Item 7)
8	8346771-1	1	Hose Outlet Short
-	8800406	2	10-32 x 1/2 Phillips TH w/ETW (AP for Item 8)
9	1114858-7	2	Tall Canister with Agitator - See Page 47
10	1123092	2	Decaf Spout Assembly
11	4203030	1	Shelf Support - Black
	8801204	2	10-16x3/8 Phillips TH w/ ETW Type B (AP for Item 11)
	4202484	1	Tube Support Bracket
Not	8090702-8	1	Rubber Tube - 12 - to coffee from valve
Shown	8090702-14	1	Rubber Tube - 15 1/2" - to mixing bowl assembly
	8324099-6	1	Cable Clamp - 3/8 x 1/2 (AP for Prev. Item)
-	8800406	1	10-32 x 1/2 Phillips TH w/ETW (AP for Prev. Item)
-	8800952	1	10-32 Hex Nut w/ ETW (AP for Prev. Item)
	8346946-2	1	Canister Label - Coffee
	8346946-6	1	Canister Label - Decaf. Coffee
	8380406	1	Shelf Label - Decaf. Coffee
	8332657	1	Shelf Label - Coffee

* AP = Attaching Part

Ingredient Shelf

Fresh Brew: Main Shelf



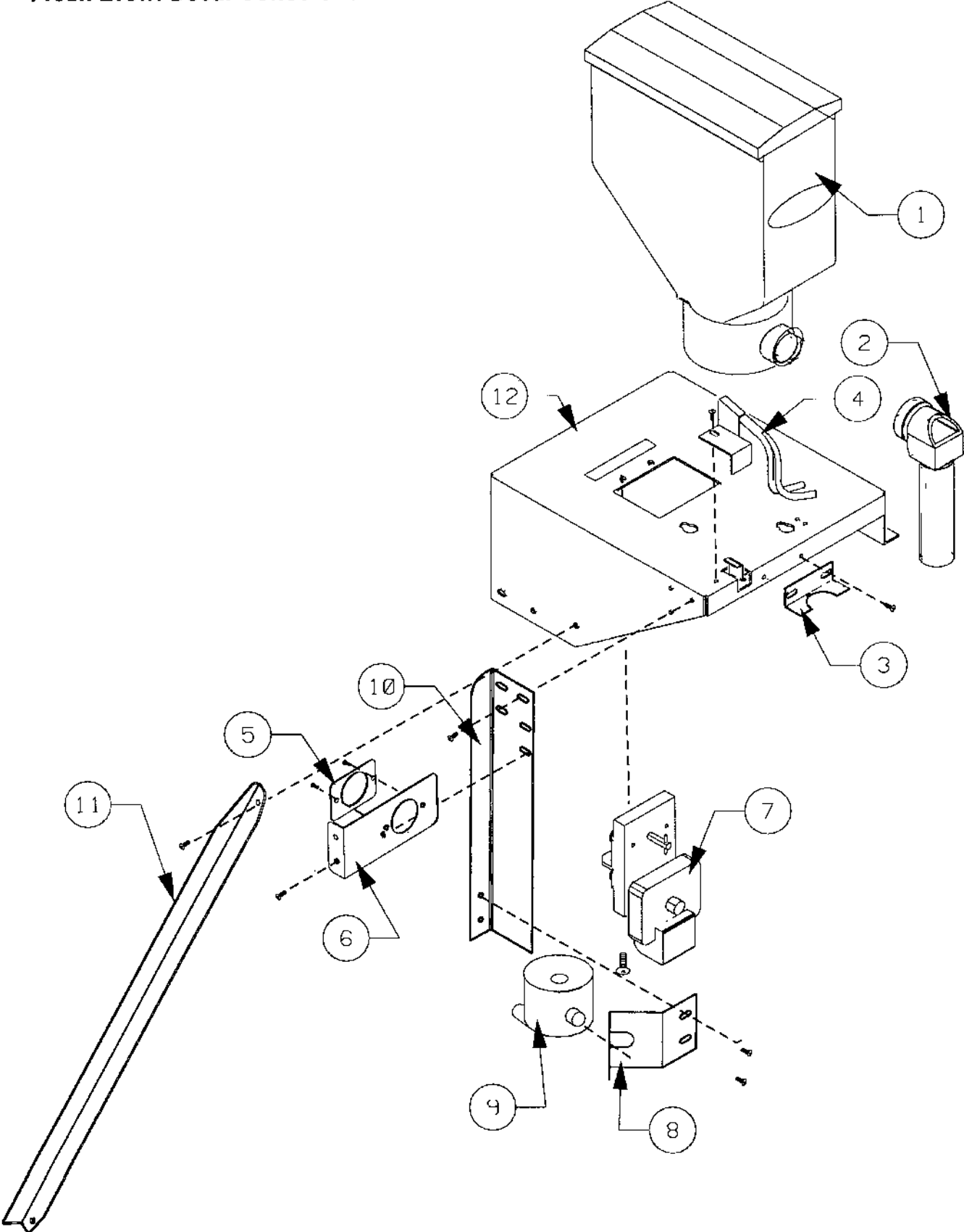
Fresh Brew: Main Shelf

ITEM	PART NUMBER	QTY	DESCRIPTION
1	1114858-7	5	Canister Assembly Tall with Agitator – See Page 47
2	1211159-003	1	Hose Bracket – Tall
-	8801204	2	10-16x3/8 Phillips TH w/ETW
3	1211159-002	1	Hose Bracket – Short
-	8324099-6	1	Cable Clamp
-	8801204	3	10-16x3/8 Phillips TH w/ETW
4	1212305	1	Wittenborg Shelf Rivet Assembly
-	8801204	6	10-16x3/8 Phillips TH w/ETW
5	1115122-9	4	Motor Assembly – 50Hz, 80 RPM – See Page 49
-	8800638	8	10-16x3/8 Phillips PH Type B (AP* for Item 5)
-	8801041	8	#10 Ext. Tooth Lockwasher (AP for Item 5)
6	1211243	2	Bowl Bracket Assembly (Soup, Tea)
7	1211294-001	1	Mixing Bowl Assembly – Tea
-	8330164	2	8-32 Brass Thumb Nuts (AP for Item 7)
8	1211294	1	Mixing Bowl Assembly – Soup
-	8330164	2	8-32 Brass Thumb Nuts (AP for Item 8)
9	1211297-001	1	Whipper Assembly – Choc. – See Page 46
-	8800638	2	10-16x3/8 Phillips PH Type B (AP for Item 5)
-	8801041	2	#10 Ext. Tooth Lockwasher (AP for Item 5)
10	8346771-1	2	Hose Outlet – Short (Soup, Tea)
-	8801204	4	10-16x3/8 Phillips TH w/ETW
11	8346990	2	Nozzle (Soup, Tea)
12	1122281	1	Nozzle Weld Assembly (Tea)
-	8369074	2	Thumb Screws #10-32 (AP for Item 12)
13	1211280	1	Funnel Weld Assembly
-	8369074	2	Thumb Screws #10-32 (AP for Item 13)
14	1211302	1	Mixing Bowl Assembly – See Page 48
-	8369074	2	Thumb Screws #10-32 (AP for Item 14)
15	1115122-12	1	Motor Assembly – 50Hz, 120 RPM – See Page 49
-	8800638	2	10-16x3/8 Phillips PH Type B (AP for Item 16)
Not Shown	8090619	1	Shelf Label – Choc.
	8090618	1	Shelf Label – Sugar
	8332655	1	Shelf Label – Tea
	8332656	1	Shelf Label – Soup
	8321479	1	Shelf Label – Dry Cream
	4025409-008	1	Tube – Tea – 30 1/2"
	4025409-009	1	Tube – Soup
	1211324-001	1	Ingredient Harness

* AP = Attaching Part

Ingredient Shelf

Fresh Brew: Decaf Coffee Shelf



Fresh Brew: Decaf Coffee Shelf

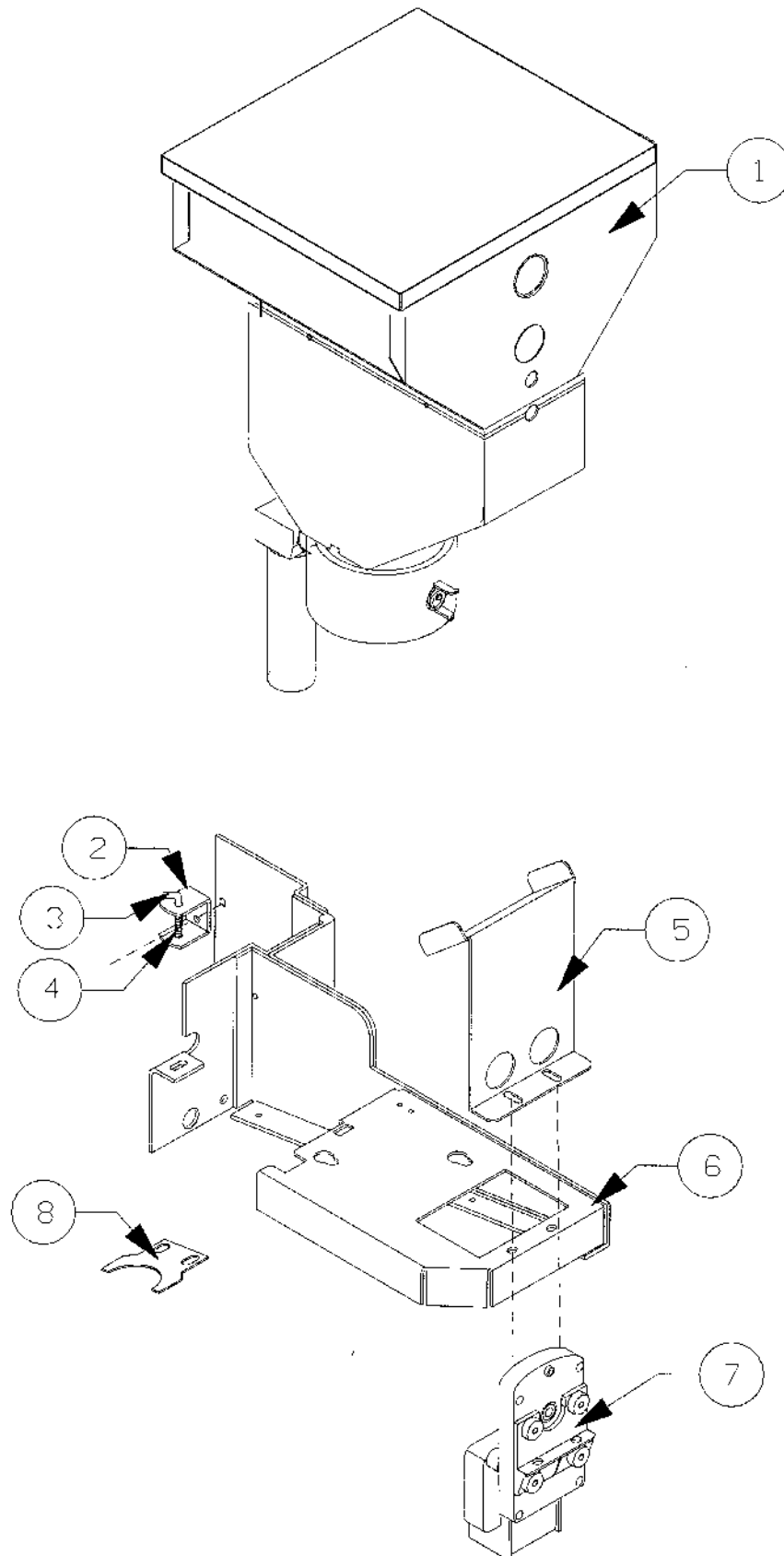
ITEM	PART NUMBER	QTY	DESCRIPTION
1	1114858-7	1	Tall Canister Assembly w/ Agitator - 3" Cut Off
2	1123092	1	Decaf Spout Assembly
-	4202618	1	Retaining Clip (AP* for Item 2)
3	4205320	1	Decaf Spout Support
-	8801204	2	10-16x3/8 Phillips TH w/ ETW Type B (AP for Item 3)
4	1212292	1	Inlet Tube Weld
-	8800704	1	10-24X1/2 Phillips TH w/ ETW Type -D (AP for Item 4)
5	8346771	1	Long Hose Outlet
-	4050240	2	8 - 32 X 3/8 Phillips PH Machine Screw (AP for Item 5)
-	8800956	2	8-32 Hex Nut w/ ETW
6	4207216	1	Exhaust Nozzle Bracket
-	4050240	2	8 - 32 X 3/8 Phillips PH Machine Screw (AP for Item 6)
-	8800956	2	8-32 Hex Nut w/ ETW
7	1115122-12	1	Motor Assembly - 50 Hz 120 RPM 115 V - See Page 49
-	8800364	2	10 x 24 x 1/2 Phillips PH MS LW (AP for Item 7)
8	4205318	1	Coffee Nozzle Support
-	4050240	2	8 - 32 X 3/8 Phillips PH Machine Screw (AP for Item 8)
-	8800956	2	8-32 Hex Nut w/ ETW
9	Wittenborg [♠]	1	Coffee Nozzle
10	4206308	1	Nozzle Bracket (long)
-	4050240	3	8 - 32 X 3/8 Phillips PH Machine Screw (AP for Item 10)
-	8800956	3	8-32 Hex Nut w/ ETW
11	4203030	1	Shelf Support
-	8801204	2	10-16x3/8 Phillips TH w/ ETW Type B (AP for Item 11)
12	4205330	1	Decaf Canister Shelf
-	8801204	2	10-16x3/8 Phillips TH w/ ETW Type B (AP for Item 12)
-	7090002-713	1	Cable Clamp - 3/4"
-	8324099-6	1	Cable Clamp - 1/2"
-	4050240	2	8 - 32 X 3/8 Phillips PH Machine Screw (AP for Item 12)
-	8800956	2	8-32 Hex Nut w/ ETW
Not	8380406	1	Shelf Label - Decaf. Coffee
Shown	8346946-6	1	Canister Label - Decaf. Coffee
-	8801204	6	10-16x3/8 Phillips TH w/ ETW Type B (AP for Item ...)

* AP = Attaching Part

♠ See the Wittenborg Parts Manual for part number

Ingredient Shelf

Fresh Brew: Coffee Shelf

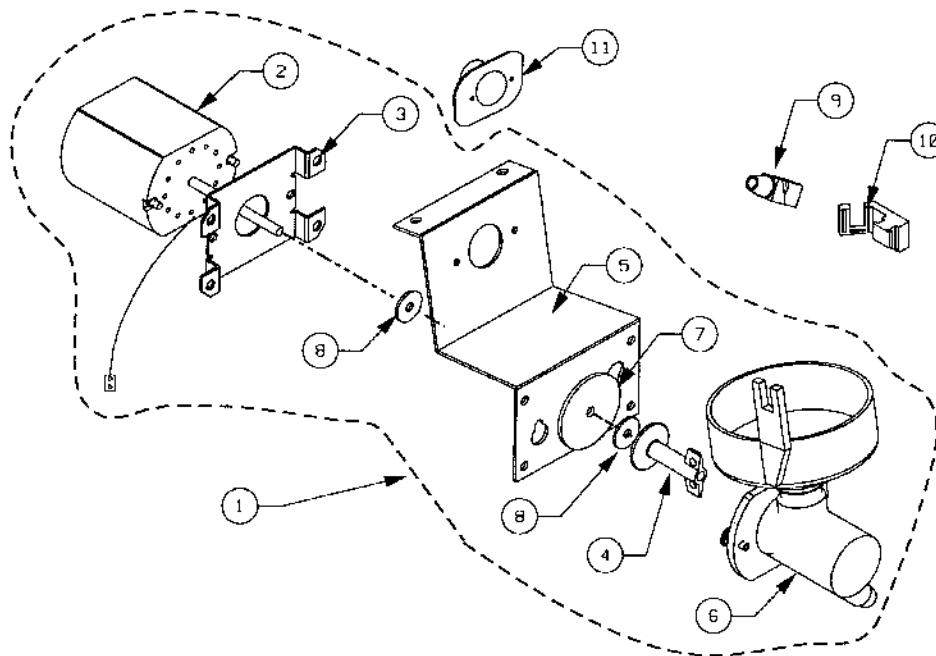


Fresh Brew: Coffee Shelf

ITEM	PART NUMBER	QTY	DESCRIPTION
1	1212309-001	1	Coffee Canister Weldment
2	4205337	1	Latch Bracket
-	8800638	2	10-16x3/8 Phillips PH Type B (AP for Item 2)
3	4205393	1	Latch Pin
-	8346514	1	Retainer Clip (AP for Item 3)
-	8801013	1	#10 Flat Washer
4	8331008	1	Compression Spring
5	4207567	1	Coffee Can Support
6	1212307	1	Coffee Shelf Rivet
-	8801204	4	10-16x3/8 Phillips TH w/ ETW Type B (AP for Item 6)
7	1115122-12	1	Motor Assembly - 50 Hz 120 RPM 115 V - See Page 49
-	8800364	2	10-24x1/2 Phil PH MS - LW (AP for Item 7)
8	4205319	1	Coffee Spout Support
-	8801204	2	10-16x3/8 Phillips TH w/ ETW Type B (AP for Item 8)
Not Shown	8332657	1	Shelf Label - Coffee
	8324099-6	3	Cable Clamp
	8346946-2	1	Canister Label - Coffee

Ingredient Shelf

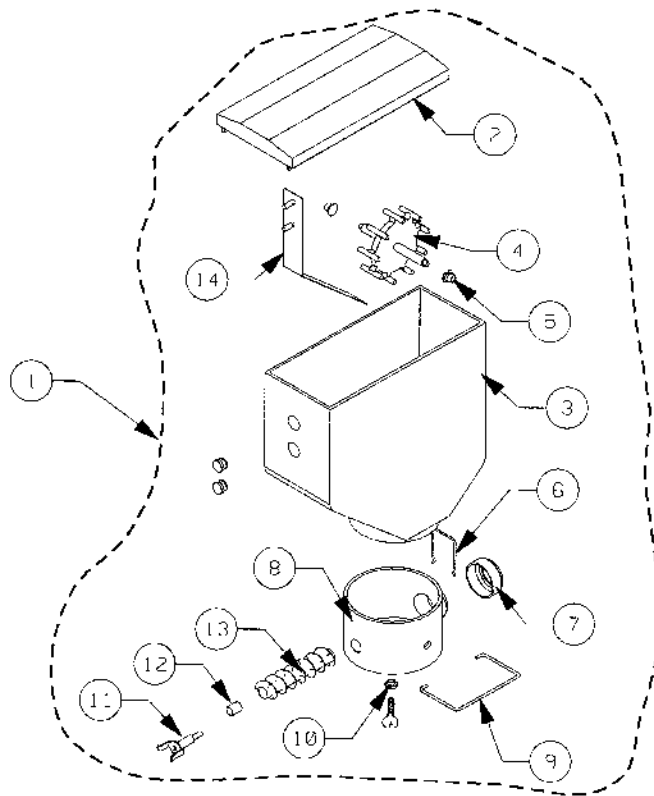
Whipper Installation



ITEM	PART NUMBER	QTY	DESCRIPTION
1	1211297-001	1	Whipper Assembly (Chocolate, Tea, Soup, Specialty Coffee)
	1211297	1	Whipper Assembly (Coffee)
2	1115244-1	1	Motor Assembly
-	8800956	2	8-32 Hex Nut w/ ETW (AP* for Item 2)
3	1211244	1	Motor Bracket Weld Assembly
4	8344572	1	Aeration Paddle
5	1211248	1	Whipper Bracket (Chocolate, Tea, Soup, Specialty Coffee)
	1211266	1	Whipper Bracket (Coffee)
-	8800776	4	10-24x1/2 Phillips PH w/ ETW (AP for Item 5)
-	8800956	4	8-32 Hex Nut w/ ETW (AP for Item 5)
6	1119541-11	1	Aeration Chamber Assembly (Chocolate, Tea, Soup, Specialty Coffee)
	1119541-12	1	Aeration Chamber Assembly (Coffee)
7	8363195	1	Seal
8	8327755	2	Disc Slinger
9	8346990	1	Nozzle (Chocolate, Tea, Soup, Specialty Coffee)
10	4208464	1	Nozzle Adapter
11	8346771-1	1	Short Hose Outlet (Chocolate, Tea, Soup, Specialty Coffee)
	8346771	1	Long Hose Outlet (Coffee)
-	88001204	2	10-16x3/8 Phillips TH w/ ETW Type B (AP for Item 11)
Not Shown	8380814	1	Elbow (Coffee)
	4206367	1	Whipper Harness

* AP = Attaching Part

Tall Canister Assembly

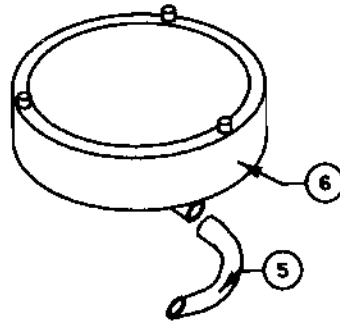
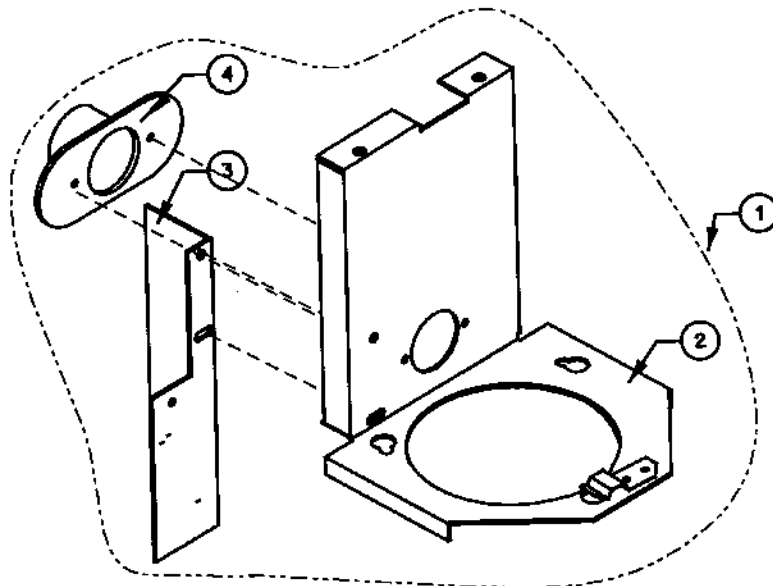


ITEM	PART NUMBER	QTY	DESCRIPTION
1	1114858-7		Canister Assembly – with Agitator
2	8346518	1	Canister Cover
3	1114858-502	1	Tall Canister (All canisters except Fresh Decaf & Fresh Coffee)
4	8346523	1	Wheel Agitator
5	8379849	2	Canister Bushing
6	8346514	1	Retainer Clip
7	8346515-1	1	Cover-Canister Spout
8	8346516	1	Canister-Base
9	8346519	1	Retainer Spring Type 302
10	8346521	2	Foot-Canister Base
-	8800874	2	10-16x5/8 Phillips TH Type BT (AP* for Item 10)
11	1107931	1	Drive Link Weld Assembly
12	8331920	1	Spacer-Drive Link
13	8346520	1	Auger-Small
14	1212966	1	Agitator Press Assembly
-	8347060	2	10-24 Thumb Nut-Brass (AP for Item 14)
Not Shown	8346946	1	Canister Label – Tea
	8346946-1	1	Canister Label – Chocolate
	8346946-3	1	Canister Label - Sugar
	8346946-4	1	Canister Label - Soup
	8346946-5	1	Canister Label - Creme

* AP = Attaching Part

Ingredient Shelf

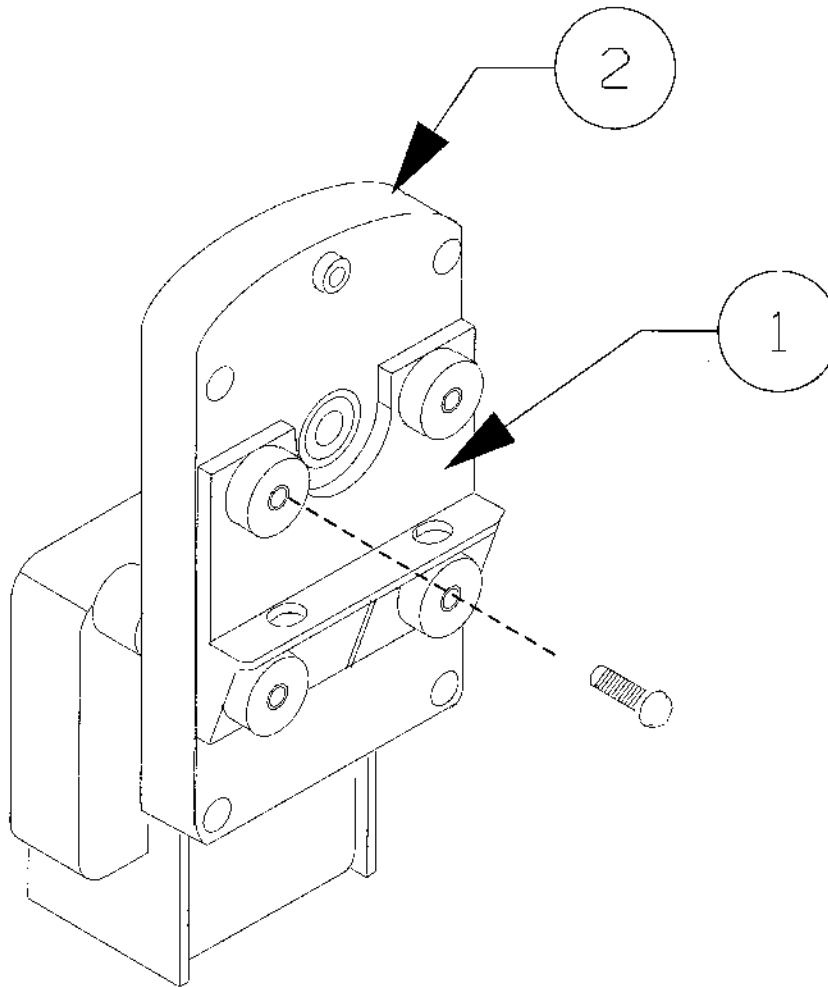
Mixing Bowl Assembly



ITEM	PART NUMBER	QTY	DESCRIPTION
	1211302		Coffee Mixing Bowl Installation
1	1212810	1	Bracket Bowl Coffee Assembly
2	1211247	1	Bowl Bracket Rivet Assembly
-	8801204	2	10-16x3/8 Phillips TH w/ETW (AP* for Item 2)
3	4202461	1	Support Bracket Mixing Bowl
4	8346771	1	Hose Outlet Long
-	8800364	2	10-24x1/2 Phil PH MS - LW (AP for Item 4)
-	8800957	2	10-24 Hex Nut w/ ETW (AP for Item 4)
5	4025409-004	1	Rubber Tube - 12 1/8"
6	8347010	1	Mixing Bowl
-	8369074	2	Knob #10-32 (AP for Item 6)

* AP = Attaching Part

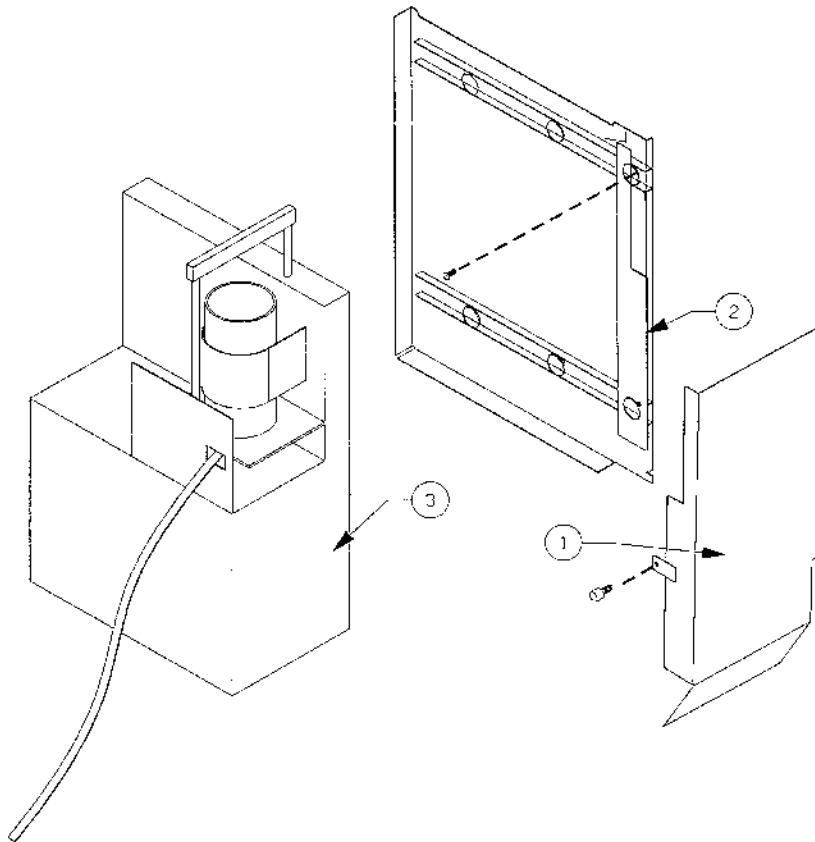
Motor Assembly



ITEM	PART NUMBER	QTY	DESCRIPTION
	1115122-9	A/R*	Motor Assembly – 80 RPM
	1115122-12	A/R	Motor Assembly – 120 RPM
1	8353143	1	Motor Mount Bracket
-	8354202	4	8-32 x 3/8 Locking Screw – Nylon Insert
2	8330173-3	1	Motor – 50 Hz, 120 RPM
	8366620-1	1	Motor – 50 Hz, 80 RPM
-	8801204	2	10-16x3/8 Phillips TH w/ETW (AP for Item 2)
Not Shown	8801128	1	3/32 x 1/8 Roll Pin

* A/R = As Required

Fresh Brew: Brewer Assembly



ITEM	PART NUMBER	QTY	DESCRIPTION
1.	1212315	1	Grounds Chute Weld Assembly
-	8045133	1	Thumb Screw -32x3/8 - Brass (AP* for Item 1)
2.	1212303	1	Brewer Mounting Bracket Weld
-	4050423	2	8-18x3/8 Phillips PH Type AB (AP for Item 2)
3.	1212310-001	1	Wittenborg Brewer Unit Assembly- HBA11A Only
-	4050240	9	8-32x3/8 Phillips PH MS (AP for Item 3)
-	8800956	9	8-32 Hex Nut w/ ETW(AP for Item 3)
	4205332	1	Wittenborg Brewer - As received from Wittenborg
			The following parts are added in order to operate the brewer with the HBA11A and are internal to the brewer:
	4207213	1	Wittenborg Brewer Harness
	4205397	1	Brewer Jumper
	4205416	1	1/4I.D.x3/8OD Beverage Tube
	4207726	1	1x7 Shrink Tube
	4207212	1	Wittenborg Brewer Wire
	4050593	1	1/4 Ext. Tooth Lockwasher

For all other parts internal to the brewer, order the Brewer Parts Manual (P/N 4208951) from the Parts Department.

* AP = Attaching Part

KITS AND OPTIONS

ITEM	PART NUMBER	QTY	DESCRIPTION
	1212950		Ingredient Heater Installation
	1211301-001		Tea or Soup Ingredient Installation
	1211301-003		Tea Whipper Installation
	1211300-002		Soup Whipper Installation
	1211297		Coffee Whipper Installation
	4060330		Lock and Key
	4060366-001		Coin Box Lock
	1212926		Kick Panel - Optional
	4201377-002	2	Kick Panel Mounting Bracket

