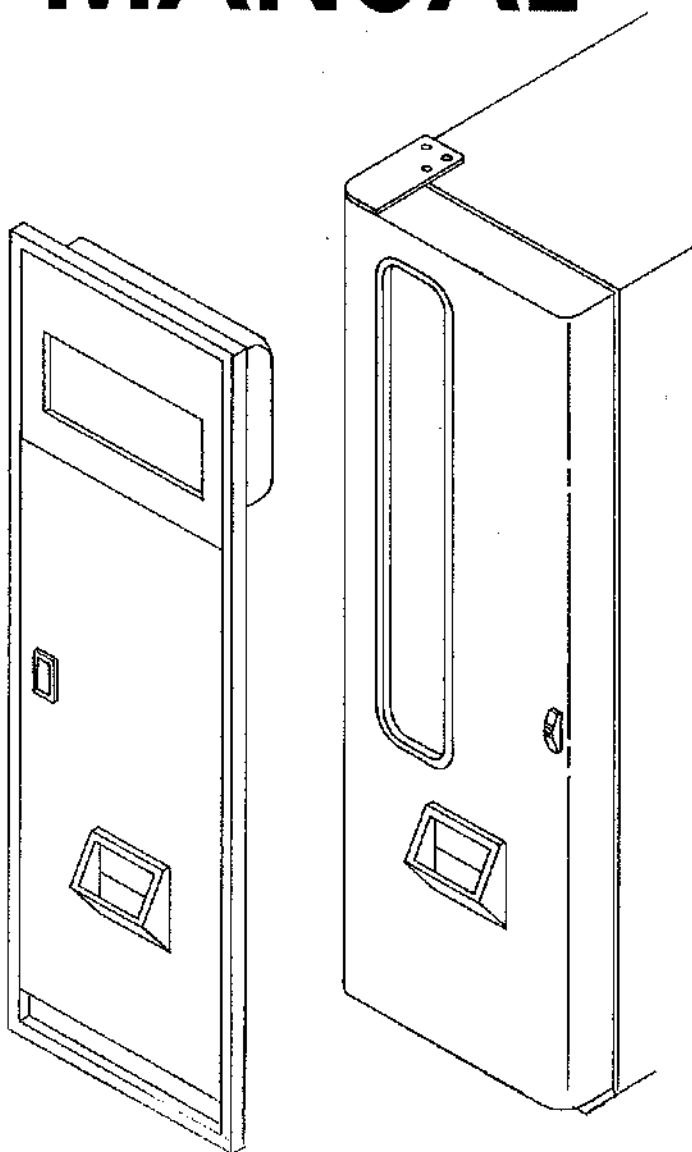


**CD6**  
**CAN DRINK VENDORS**  
**MODELS 3031 & 3038**  
**SQUARE FRONT & ROUND FRONT**  
**PARTS**  
**MANUAL**



TYPE "A"

TYPE "B"

P/N 4206415

# GENERAL INFORMATION

---

Welcome to Selectivend, Inc., we offer you three convenient ways to order replacement parts. If you have any questions when placing your order, please call and we'll be happy to assist you. Please provide the following information when placing your order:

- Quantity Required
- Part Number
- Shipping and Billing Address
- Description
- Preferred Method of Shipment
- Vendor Model Number
- Customer Account Number
- Serial Number

## TO ORDER BY MAIL:

You may place your requirements for replacement parts by providing necessary information as requested above, and mailing your order to:

Selectivend, Inc.  
165 North 10th Street  
Waukee, Iowa 50263

If you have any questions, please call **(515) 274-3641**, ask for Selectivend Parts and we will be happy to assist you.

Order forms are available upon request from Selectivend, Inc. or you may use your own purchase order form.

## TO ORDER BY FAX MACHINE: **(515) 987-4447**

You may Fax your order for replacement parts by providing the necessary information as requested above, to Selectivend, Inc. by using our fax: **(515) 987-4447**

If you have any questions, so indicate and we will respond via Fax, with your answer.

## TO ORDER BY PHONE: **(515) 274-3641**

You may call in your order for replacement parts. Ask for Selectivend Parts Department. Please provide the necessary information, as requested above, to allow us to provide you with prompt courteous service.

If you have any questions, so indicate and we will be happy to assist you.

- **MINIMUM ORDER \$25.00.** You may wish to inquire on prices of parts at the time of your order. If your order is less than the minimum, please check our catalog for other parts you may require to bring your order up to the \$25.00 minimum order.
- **OPEN ACCOUNT** with approved credit.
- **MASTER CARD - VISA - C.O.D.**

If you have any questions, please call and we will be happy to assist you.

## **RETURNS:**

**RESTOCKING CHARGE 20%.** A restocking charge of 20% will apply to merchandise accepted by Selectivend for return, except items processed as a warranty.

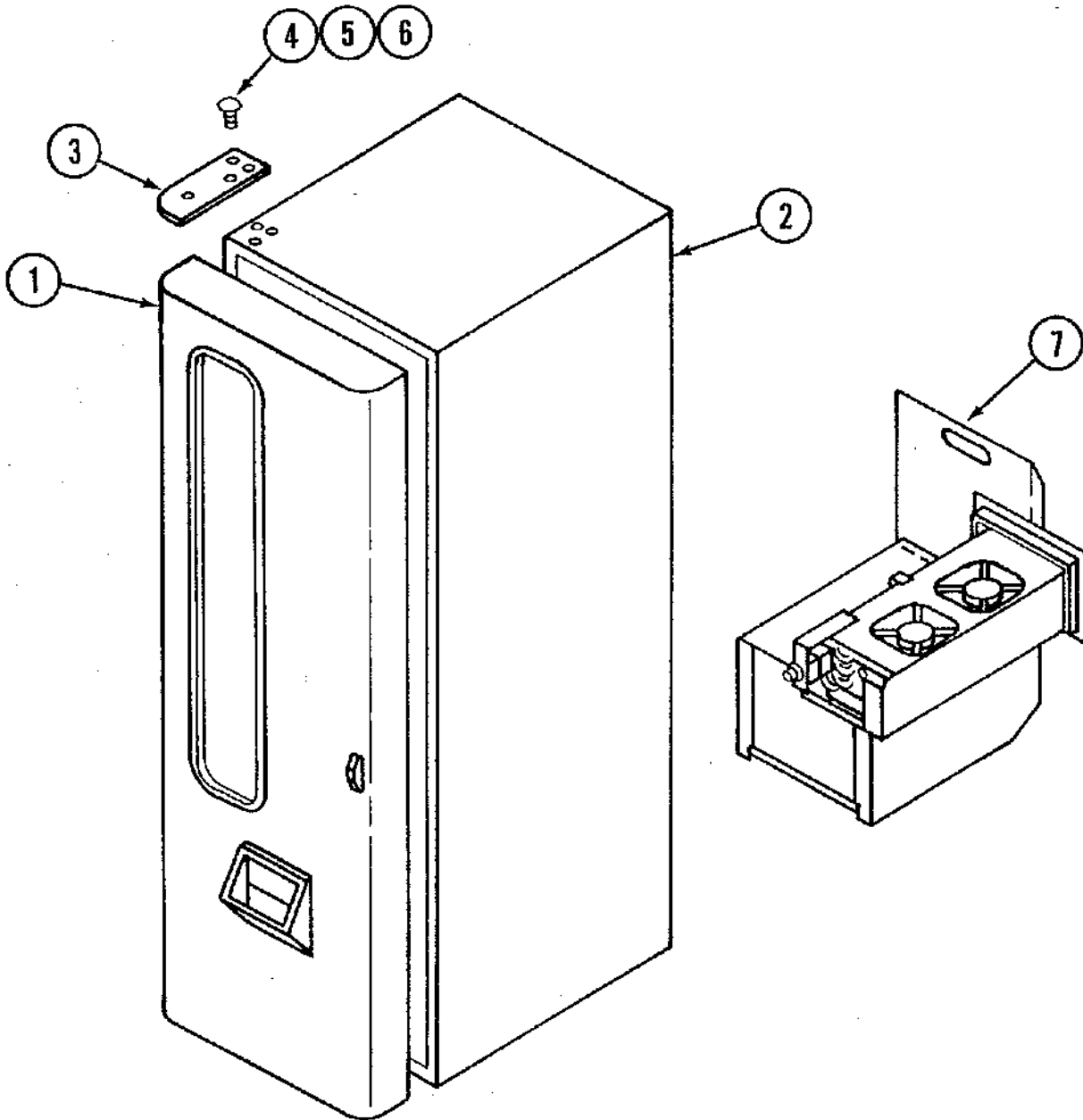
All items returned must be accompanied by a "material return tag" clearly stating the reason for return. Returns are to be shipped freight prepaid to Selectivend, Inc. 165 North 10th Street, Waukee, Iowa 50263. (Return tags are available upon request from Selectivend.)

If you have any questions regarding returns, please call Selectivend, Inc. (515) 274-3641, we will be happy to assist you.

## **LIMITATION OF LIABILITY:**

Selectivend, Inc. shall not be liable for any injury, loss or damage, whether direct, incidental or consequential arising out of the use of or the inability to use any part, parts or products sold by Selectivend, Inc. The remedies of the buyer set forth herein are exclusive, and the liability of Selectivend, Inc. with respect to any contract or sale or anything done in connection therewith, whether in contract, in tort, under any warranty, or otherwise, shall not, except as expressly provided herein, exceed the price of the part, parts or products on which such liability is based. Any statements or representations about the parts or product, other than those contained herein, do not constitute warranties and shall not be relied on by the buyer and shall have no force or effect unless contained in a written agreement signed by officers of Selectivend.

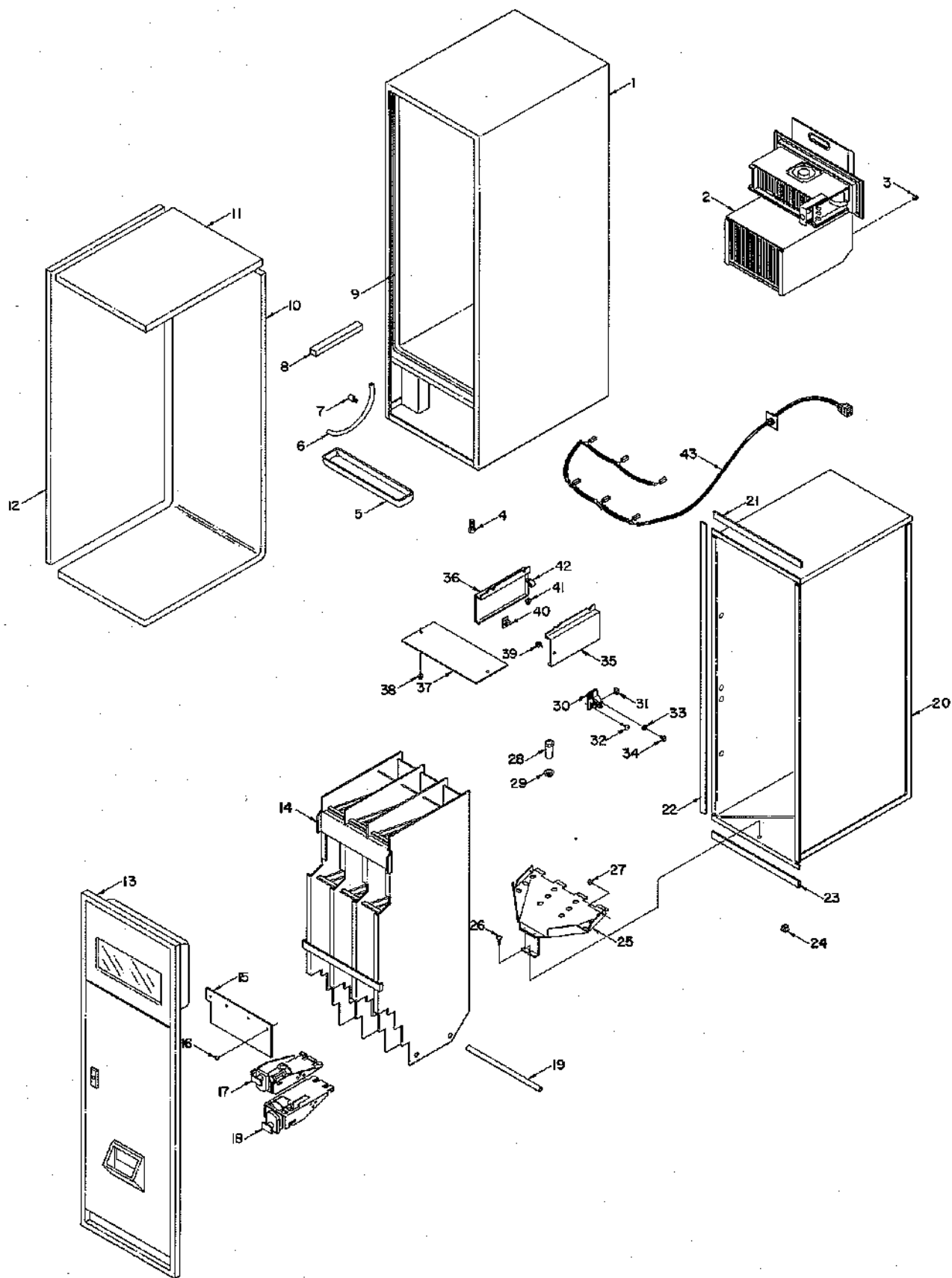
# MACHINE FINAL



# MACHINE FINAL

ITEM	PART NUMBER	DESCRIPTION	TYPE "A"	TYPE "B"
	MODEL 3031	MACHINE FINAL	X	X
	MODEL	MODEL 3038 MACHINE FINAL		X
1	1212018	COMPLETE DOOR ASSEMBLY (SEE PAGE #9)		1
1	1211205	COMPLETE DOOR ASSEMBLY (SEE PAGE #13)	1	
2	1211208	CABINET FINAL (SEE PAGE #5)	1	
2	1212065	CABINET FINAL (SEE PAGE #5)	1	
3	1211203	TOP HINGE ASSEMBLY	1	
3	1212182-002	TOP HINGE ASS Y (WESTO)		
3	1211484-005	UPPER HINGE STAKE		1
4	4050099	5/16 X 3/4 CARRIAGE BOLT	3	3
5	7186148-000	#5/16 SPLIT WASHER	3	3
6	8810015	5/16-18 FLANGE LOCK NUT	3	3
7	1212326-001	115 VOLT REFER ASSEMBLY (SEE PAGES 19 THRU 22)	1	1
7	1212326-002	230 VOLT REFER ASSEMBLY (SEE PAGES 19 THRU 22)	1	1

# MACHINE FINAL

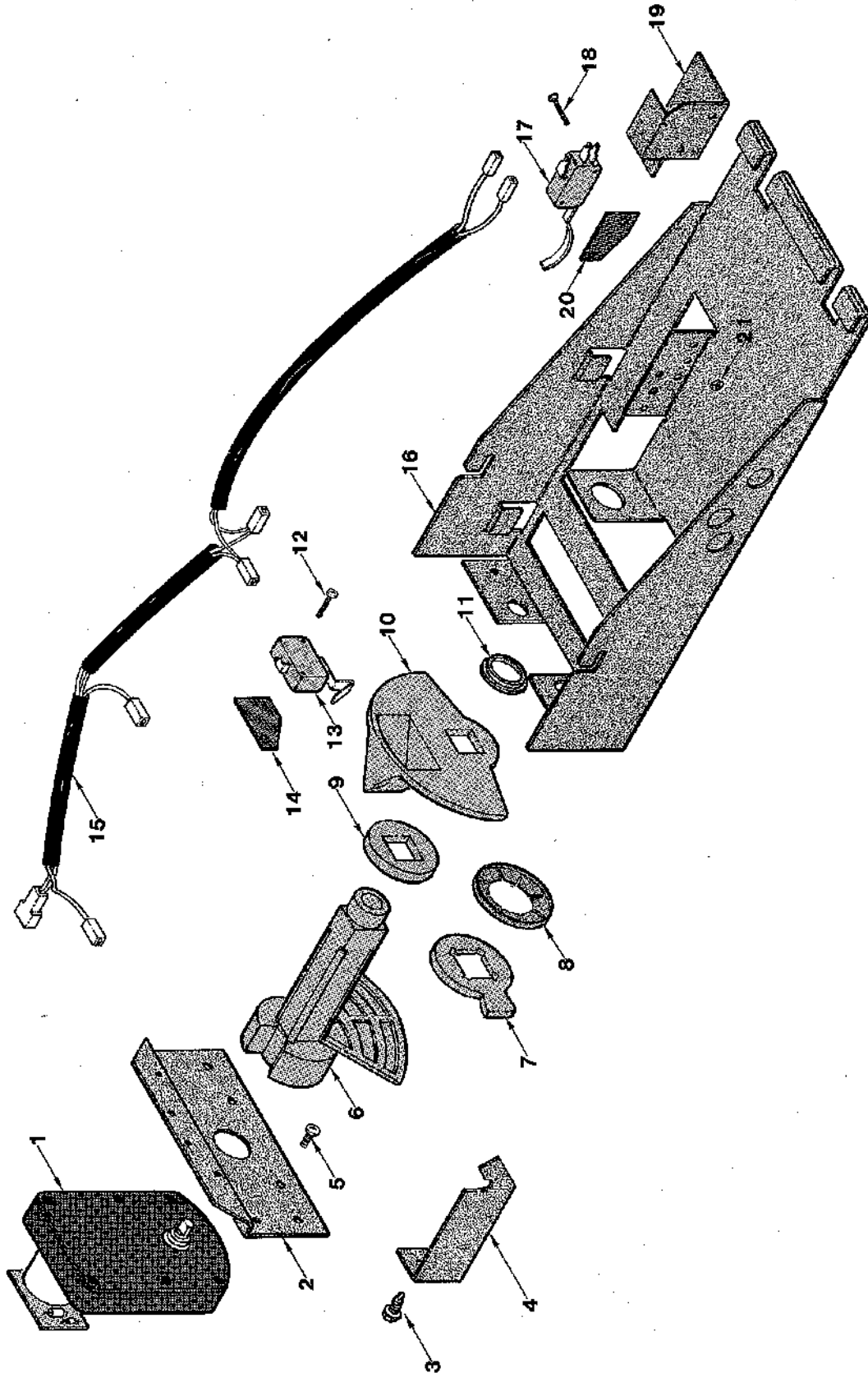


# MACHINE FINAL

ITEM	PART NUMBER	DESCRIPTION	TYPE "A"	TYPE "B"
	1211208	CABINET FINAL ASSEMBLY	X	
	1212065	CABINET FINAL ASSEMBLY		X
1	1211430-005	CABINET WELD	1	1
1	211193-001	CABINET WELD	1	
2	1212326-001	115 VOLT REFER ASSEMBLY (SEE PAGES 19-THRU 22)	1	1
2	1212326-002	230 VOLT REFER ASSEMBLY (SEE PAGES 19-THRU 22)	1	1
3	4050202	#8-18 X 1/2 PHIL HWH TEK	A/R	A/R
4	4060310	LEG LEVELER	4	4
5	7200623-000	DRAIN PAN	1	1
6	4025410-000	TUBING-MAYON-24"	1	1
7	7200341-000	TUBE CLIP	1	1
8	4201398	WOOD-LINER SUPPORT	1	2
9	7960247-000	"A" FRAME GASKETT	1	
10	4202286	BACK & BOTTOM INSULATION	1	1
11	4202287	TOP INSULATION	1	1
12	4202285	SIDE INSULATION	2	2
13	1212018	COMPLETE DOOR ASSY (SEE P.#9)		1
13	1211205	COMPLETE DOOR ASSY (SEE P.#13)	1	
14	1211194	RACK RIVET ASSEMBLY	1	1
15	1211196	MOTOR COVER LABEL ASSEMBLY	1	1
16	8800636	#8-18 X 1/2 PHIL PH SCREW	4	4
17	1211443	UPPER EJECTOR MECH (SEE P.#7)	3	3
17	1210902	UPPER EJECTOR MECH (SEE P.#7)	3	3
18	1210901	LOWER EJECTOR MECH (SEE P.#7)	3	3
18	1211444	LOWER EJECTOR MECH (SEE P.#7)	3	3
19	8620197-002	TUBE-RACK SUPPORT	2	2
20	1211179	LINER WELD ASSY	1	1
21	4202278-002	1.56 W X 20.75 FOAM TAPE	1	1
22	4202278-001	1.56 W X 54.31 FOAM TAPE	1	1
23	4202279-001	1.25 W X 20.75 FOAM TAPE	1	1
24	4202189	SNAP IN PLASTIC SPRING	10	10
25	1211213-001	CAN CHUTE ASSY 1	1	
26	7200468-001	#10-12 X 1 PHIL TH SCREW	A/R	A/R
27	8800636	#8-18 X 1/2 PHIL PH SCREW	2	2
28	7100042-000	DRAIN TUBE 1	1	
29	4202284	.500 STUD DIA. PUSH NUT	1	1
30	1210789-001	LOCK NUT BRACKET WELD	1	1
31	4050760	1/2-13 SQUARE NUT W/RETAINER	1	1
32	7200468-001	#10-12 X 1 PHIL TH SCREW	A/R	A/R
33	8801011	#8 FLAT WASHER 1	1	
34	4201239	#1/4-20 X 3/4 HWH TAPTITE SCREW	1	1
35	4202345-001	CAN RACK SUPPORT-RH	1	1
36	4202345	CAN RACK SUPPORT-LH	1	1
37	4202347	AIR BAFFLE1	1	
38	4050202	#8-18 X 1/2 PHIL HWH TEK SCREW	A/R	A/R
39	4201239	#1/4-20 X 3/4 HWH TAPTITE SCREW	14	14
40	8370959	CLAMP LOCKING 1	1	
41	4050202	#8-18 X 1/2 PHIL HWH TEK SCREW	1	1
42	4060116	CLAMP	1	1
43	4202326	UMBILICAL HARNESS	1	1

A/R=AS REQUIRED

# EJECTOR MECH. ASSEMBLY

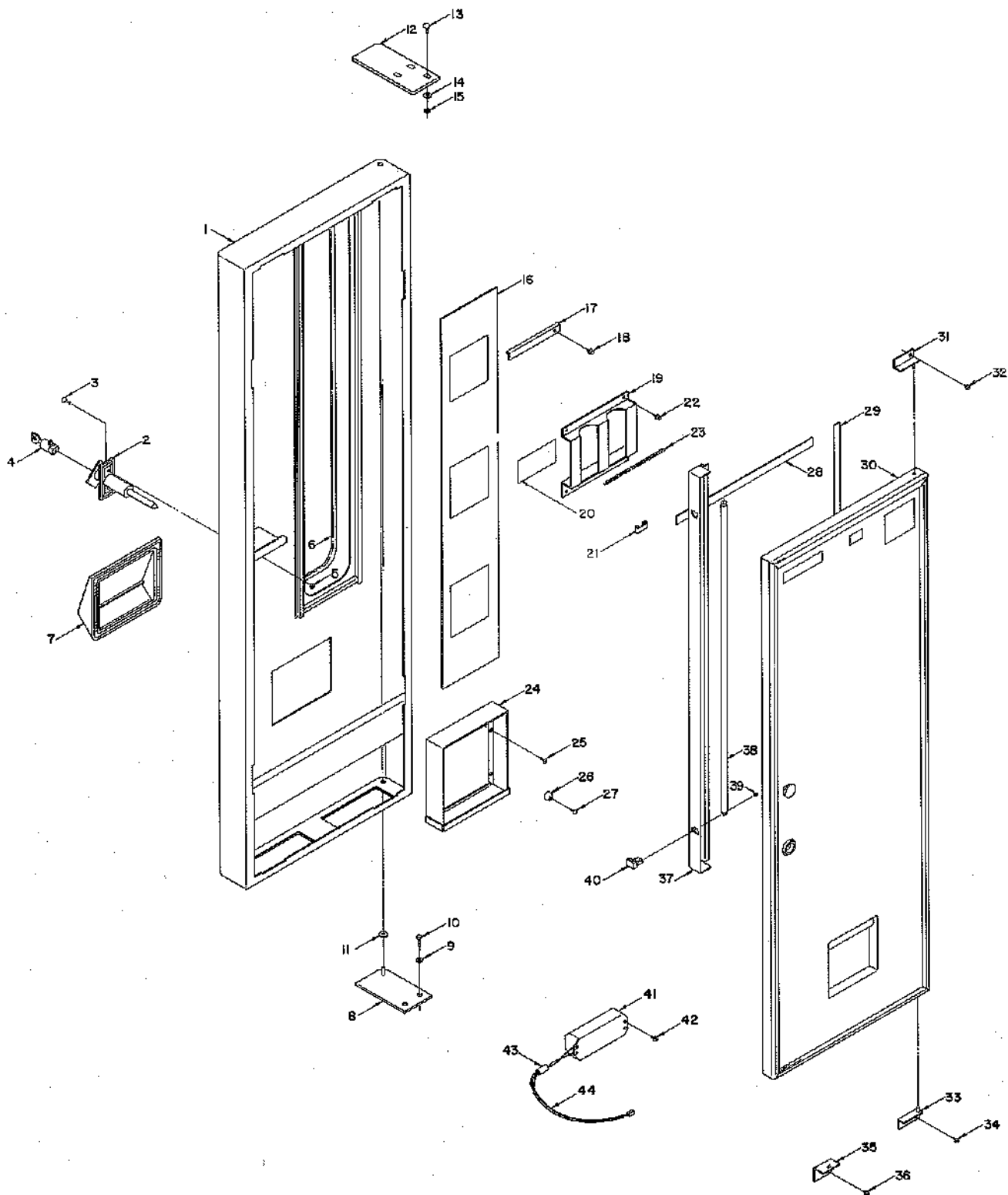




# EJECTOR MECH. ASSEMBLY

ITEM	PART NUMBER	QTY	DESCRIPTION
	1211444	3	LOWER EJECTOR MECH ASSY
	1210901	3	LOWER EJECTOR MECH ASSY
1	4202826	1	MOTOR-EJECTOR MECH (WITH 3 TERMINAL CIRCUIT BOARD)
1	4201533	1	MOTOR-EJECTOR MECH
2	4201328	1	MOTOR MOUNT PLATE
3	4050202	3	#8-18 x 1/2 PHIL HWH TEK
4	4201326	1	RETAINING BRACKET
5	8800636	2	#8-18 x 1/2 PHIL PH TYPE B
6	4201162	1	CAM-LARGE
7	4201542	1	AUXILIARY EJECTOR
8	4201628	1	CAM SHAFT RETAINER
9	4201160	1	SPACER
10	4201161	1	CAM-SMALL
11	8620714	1	BUSHING-SNAP-IN
12	7100470-004	2	#4-40 x 5/8 PHIL PH TYPE T
13	4201545-003	1	OVERRIDE SWITCH
14	4003735	1	SWITCH INSULATOR
15	4201636	1	EJECTOR MECH HARNESS (USED WITH 4201533 MOTOR)
15	4202946	1	HARNESS (USED WITH 4202826 MOTOR)
16	4201327	1	MECH PLATE
17	4201545-002	1	SOLD OUT SWITCH
18	8801332	2	#4-40 x 3/4 PHIL PH TAPTITE
19	4201561	1	SWITCH COVER
20	4003735	1	SWITCH INSULATOR
	1211443	3	UPPER EJECTOR MECH ASSY
	1210902	3	UPPER EJECTOR MECH ASSY
1	4202826	1	MOTOR-EJECTOR MECH (WITH 3 TERMINAL CIRCUIT BOARD)
1	4201533	1	MOTOR-EJECTOR MECH
2	4201328	1	MOTOR MOUNT PLATE
3	4050202	3	#8-18 x 1/2 PHIL HWH TEK
4	4201326	1	RETAINING BRACKET
5	8800636	2	#8-18 x 1/2 PHIL PH TYPE 8
6	4201162	1	CAM-LARGE
7			NOT REQUIRED
8			NOT REQUIRED
9	4201160	1	SPACER
10	4201161	1	CAM-SMALL
11	8620714	1	BUSHING-SNAP-IN
12	7100470-004	2	#4-40 x 5/8 PHIL PH TYPE T
13	4201545-003	1	OVERRIDE SWITCH
14	4003735	1	SWITCH INSULATOR
15	4201636	1	EJECTOR MECH HARNESS (USED WITH 4201533 MOTOR)
15	4202946	1	HARNESS (USED WITH 4202826 MOTOR)
16	4201327	1	MECH PLATE
17	4201545-002	1	SOLD OUT SWITCH
18	8801332	2	#4-40 x 3/4 PHIL PH TAPTITE
19	4201561	1	SWITCH COVER
20	4003735	1	SWITCH INSULATOR

# DOOR FINAL - ROUND FRONT



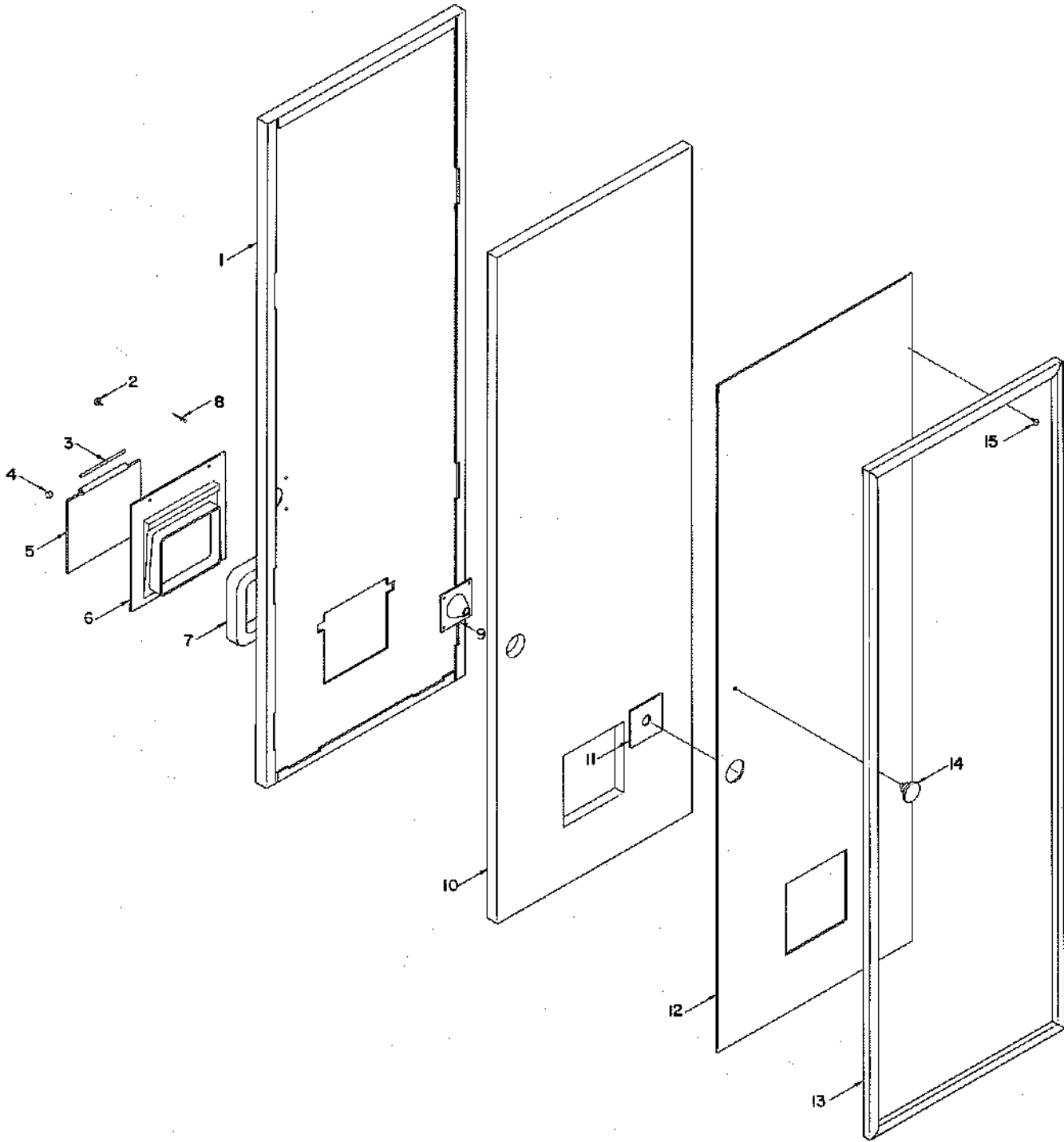
## DOOR FINAL - ROUND FRONT

ITEM	PART NUMBER	DESCRIPTION	TYPE "A"	TYPE "B"
		CD-6 ROUND FRONT-TYPE "B"		
1	1212018 1211425-016	COMPLETE DOOR ASSEMBLY DOOR WELD (WESTOMATIC)		
1	1211425-005	DOOR WELD - GRANITE GRAY		1
2	4060417-001	T-HANDLE W/LOCK NT - BLACK		1
3	4050338	#10-32 x 1/2 PHIL FH MS		2
4	4050338-XXX	LOCK CYLINDER WITH KEYS		1
5	8800952	#10-32 HEX NUT W/ETW		2
6	4025735-900	TRIM LOK		8 FT
7	4202207	DELIVERY TRIM		1
8	1212056-005	LOWER HINGE STAKE		1
	1212183-002	LOWER HINGE (WESTOMATIC)		1
9	7186148-000	5/16 SPLIT WASHER		2
10	8801388	5/16-18 x 3/4 HWH TYPE D		2
11	4050767	#3/8 FLAT WASHER - NYLON		A/R
12	1211484-005	UPPER HINGE STAKE		1
	1212182-002	UPPER HINGE (WESTOMATIC)		1
13	4050099	5/16-18 x 3/4 CARRIAGE BOLT		3
14	7186148-000	#5/16 SPLIT WASHER		3
15	8810015	#5/16-18 FLANGE LK NUT		3
16	4203569-001	DISPLAY WINDOW - SCREENED		1
17	4203092	WINDOW RETAINER		2
18	4050420	#8-18 x 1/4 PHIL HWH		A/R
19	4203739	CAN MOUNT SPECIAL		3
*20	4203752	OPERATING INSTRUCTION LABEL		1
21	4203341	PRICE SCROLL		3
22	4050420	#8-18 x 1/4 PHIL HWH		A/R
23	8379539-000	SPRING TENSION		3
24	1211422-001	DELIVERY WELD - BLACK		1
25	8800638	#8-18 x 1/2 PHIL PH		A/R
26	8620821	RUBBER STOPPER		1
27	8800636	#8-18 x 1/2 PHIL PH		1
28	4202255	GASKET - 1/4 x 3/4 W/ADHV		6 FT
29	4202255	GASKET - 1/4 x 3/4 W/ADHV		6 FT
30	1212020	INNER DOOR ASSY (SEE PAGE #11)		1
31	1211397-002	INNER HINGE WELD - TOP		1
32	4050202	#8-18 x 1/2 PHIL HWH - TEK		2
33	1211397	INNER HINGE WELD - BOTTOM		1
34	4050202	#8-18 x 1/2 PHIL HWH - TEK		2
35	4203050-001	DOOR CATCH		1
36	4050202	#8-18 x 1/2 PHIL HWH - TEK		2
37	4203059	LIGHT MOUNT		1
38	4203131	LAMP (F30 T12)		1
39	8800060	#6-32 x 3/8 PHIL MACHINE SCREW		4
40	4203637	LAMP SOCKET		2
41	4203625-001	BALLAST ASSEMBLY (230 VOLT)		1
42	4050420	#8-18 x 1/4 PHIL HWH		4
43	4202801	SHIELD BEAD		1
44	4203465	LAMP HARNESS		1

A/R=AS REQUIRED

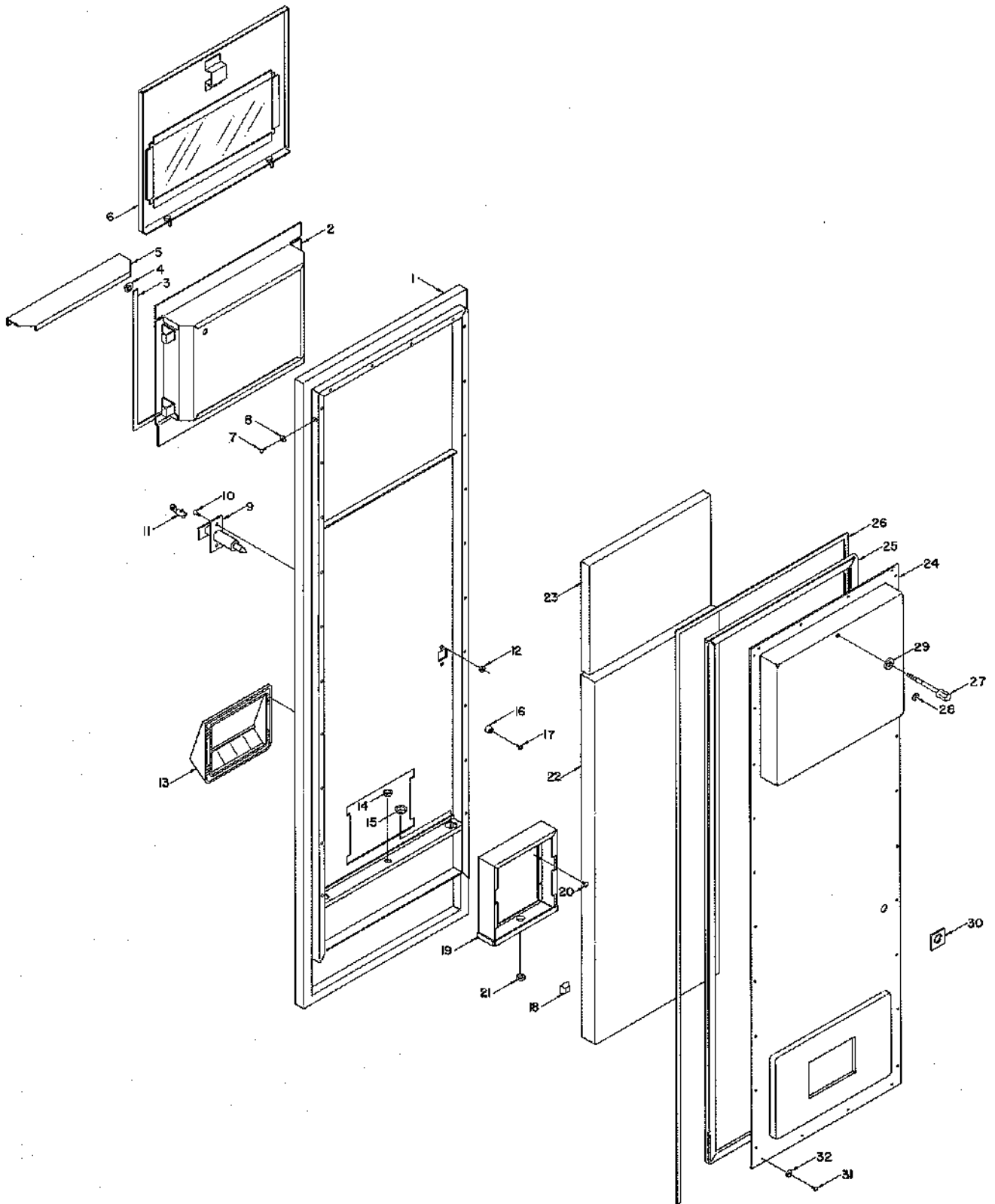
\*FOR INTERNATIONAL APPLICATIONS SEPECIFY LANGUAGE

# INNER DOOR ASSEMBLY





# DOOR FINAL - SQUARE FRONT

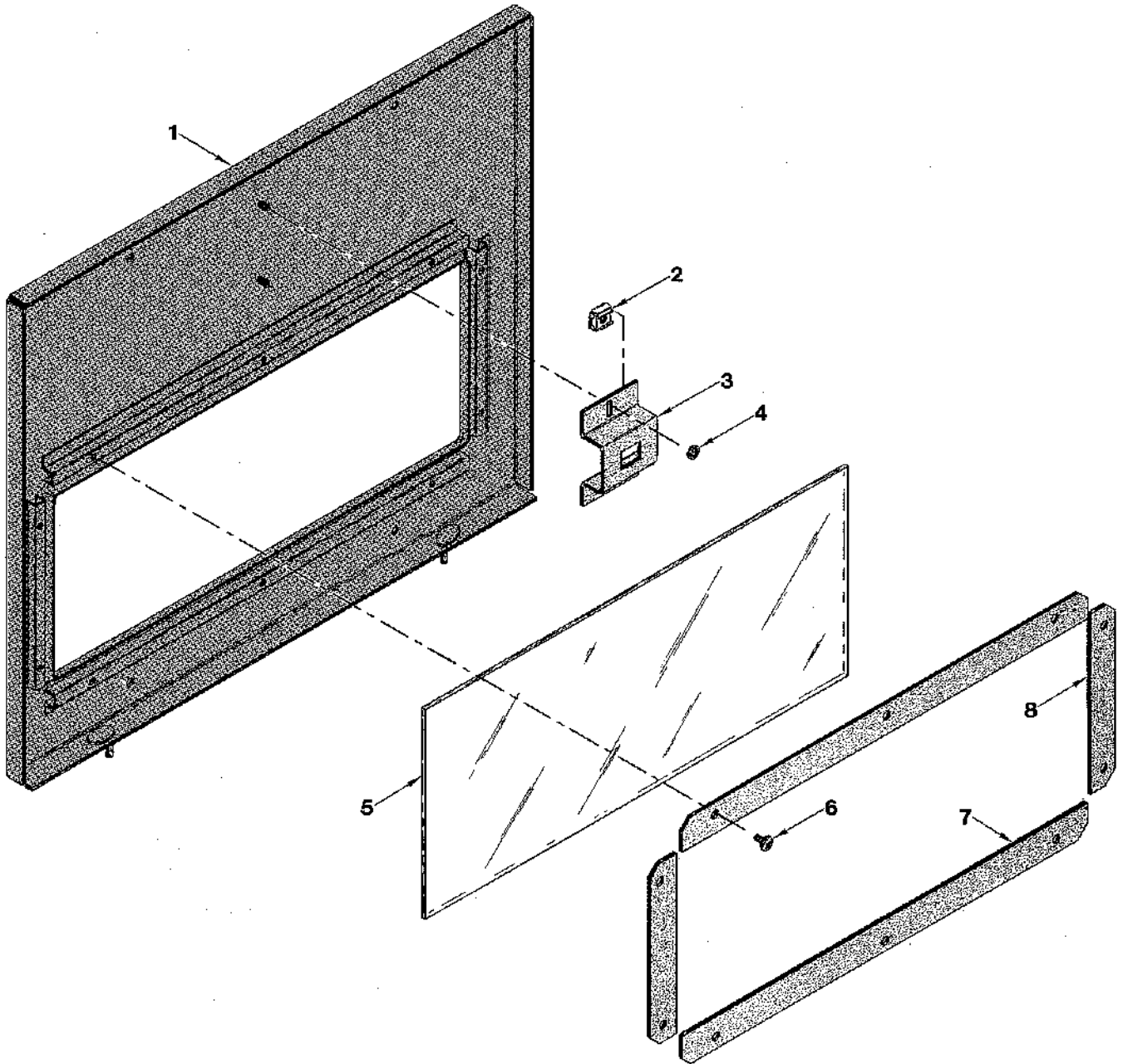


# DOOR FINAL - SQUARE FRONT

ITEM	PART NUMBER	DESCRIPTION	TYPE "A"	TYPE "B"
		CD-6 SQUARE FRONT		
	1211205	COMPLETE DOOR ASSEMBLY	X	
1	1211192-002	DOOR WELD	1	
2	1210866-001	DISPLAY TOP WELD	1	
3	4060006-500	1/2 x 1/4 DOOR GASKET	4 FT	
4	7250135-001	12 HOLE PLUG	1	
5	4202282-001	DISPLAY FILLER	1	
6	1211211	DISPLAY DOOR ASSY (SEE PG #15)	1	
7	8800636	#8-18 x 1/2 PH SCREW	4	
8	8801011	#8 FLAT WASHER	4	
9	4060321	FLUSH "T" HANDLE	1	
10	4050338	#10-32 x 1/2 PH PH MACHINE SCREW	2	
11	4060330-XXX	LOCK CYLINDER W/KEYS	1	
12	4050546	#10-32 TWIN WHIZ NUT	2	
13	4202207	DISPLAY TRIM	1	
14	7250135-003	3/4" HOLE PLUG	1	
15	7250135-000	1 3/8" HOLE PLUG	2	
16	8620821	RUBBER STOPPER	1	
17	4050792	#10-16 x 1/2 PHIL PH SCREW	1	
18	4200328	SELF ADHESIVE FEET	1	
19	1211241-001	DELIVERY WELD	1	
20	4050792	#10-16 x 1/2 PHIL PH SCREW	4	
21	7250135-008	5/8" HOLE PLUG	1	
22	4202283	LOWER DOOR INSULATION	1	
23	4201594	UPPER DOOR INSULATION	1	
24	1211285	LOWER DOOR LINER ASSY (SEE PAGE #17)	1	
25	4201203-001	DOOR GASKET	1	
26	4060006	1/2 x 1/4 DOOR GASKET	12 FT	
27	4201617-001	DISPLAY LOCK SCREW	1	
28	8801077	RETAINING RING	1	
29	4050767	3/8 FLAT WASHER - NYLON	1	
30	1211074	SEAL ASSY - DOOR LOCK	1	
31	8800636	#8-18 x 1/2 PH SCREW	30	
32	8801011	#8 FLAT WASHER	30	

A/R=AS REQUIRED

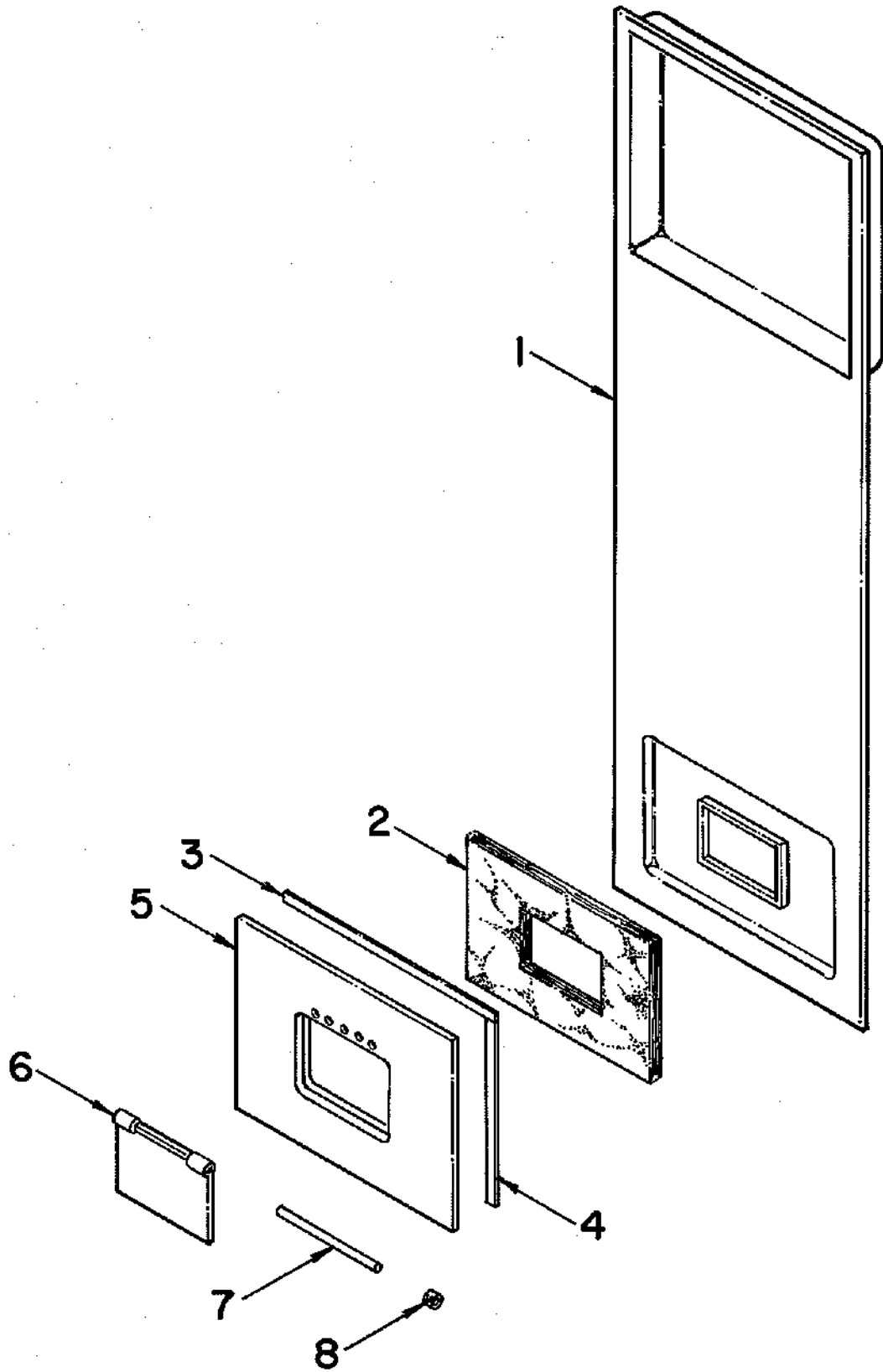
# DISPLAY ASSEMBLY - SQUARE FRONT





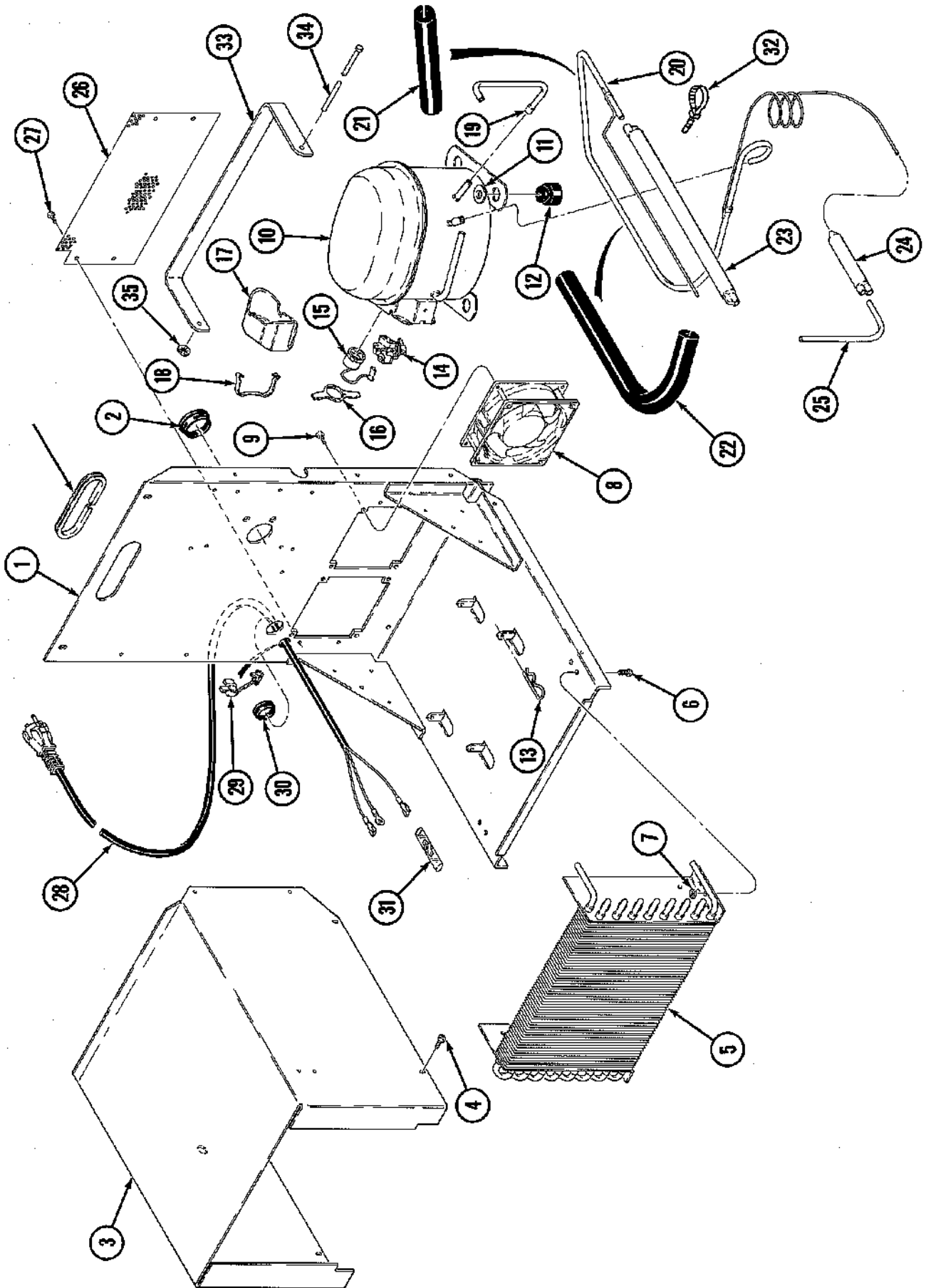


# DOOR LINER ASSEMBLY - SQUARE FRONT





# REFER ASSEMBLY

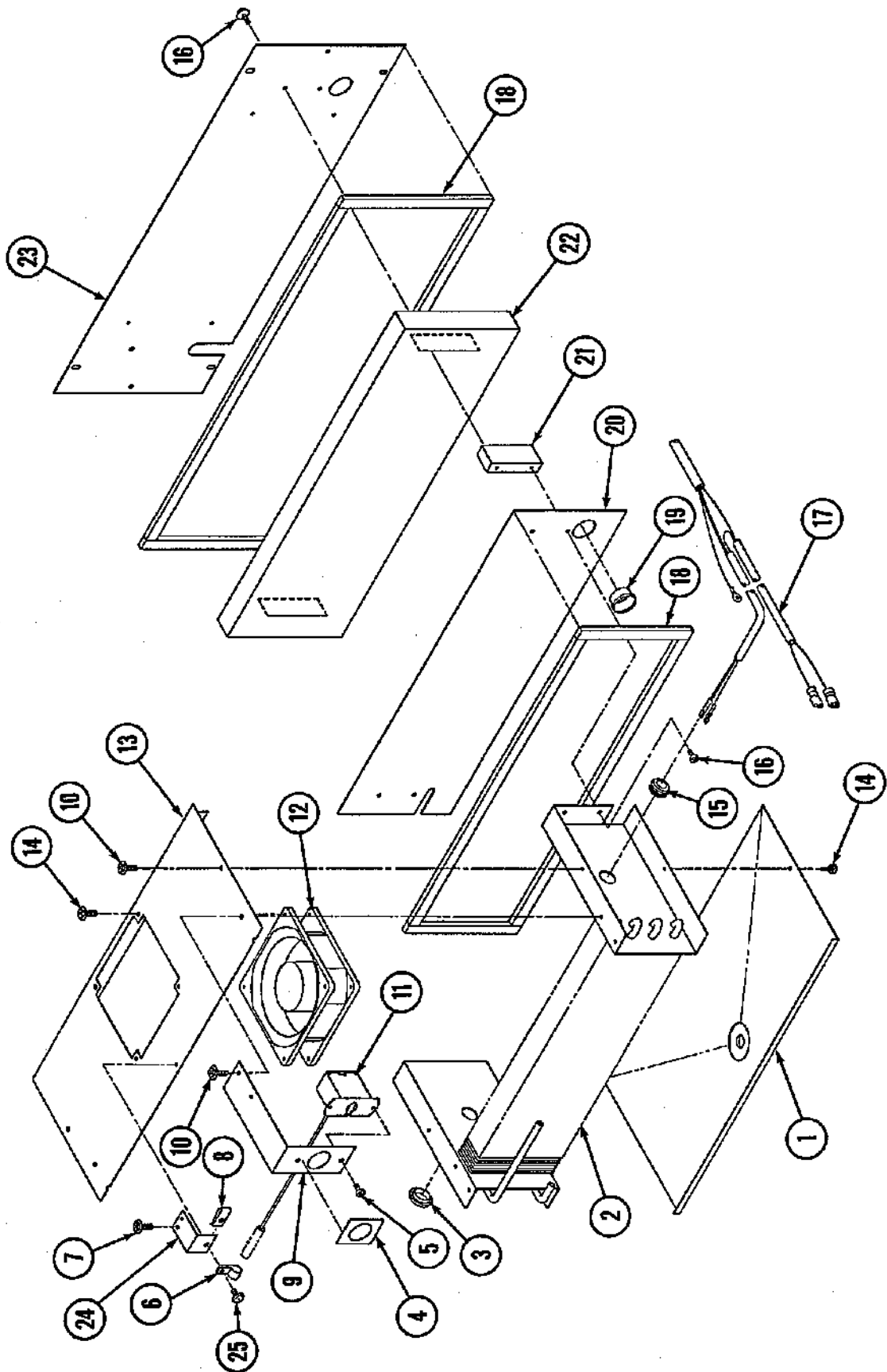


## REFER ASSEMBLY

ITEM	PART NUMBER	DESCRIPTION	TYPE "A"	TYPE "B"
		R-134a REFRIGERANT REFER ASSEMBLY - 1/4 H.P.		
	1212326-001	REFER ASSY - 115 VOLT	X	
	1212326-002	REFER ASSY - 230 VOLT		X
1	1212209-001	REFER BASE WELD	1	1
2	8359801-2	SNAP BUSHING - SPLIT	1	1
3	4202328	COMPRESSOR COVER	1	1
4	4050202	#8-18 x 1/2 PHIL HD TEK SCREW	A/R	A/R
5	4060477	CONDENSER COIL	1	1
6	4050240	#8-32 x 3/8 PHIL SCREW	4	4
7	4050513	#8-32 TWIN WHIZ LK NUT	4	4
8	4034344-000	EVAPORATOR FAN - 115 VOLT	2	
8	4034344-001	EVAPORATOR FAN - 230 VOLT		2
9	8800829	#10-24 x 3/8 PHIL SCREW	8	8
10	4203789	COMPRESSOR - 1/4 HP - 115 VOLT	1	
10	4205469	COMPRESSOR - 1/4 HP - 230 VOLT		1
11	4050608	1/2 FLAT WASHER 4	4	
12	8323090-1	GROMMET - COMPRESSOR	4	4
13	4050773-001	HITCH PIN	4	4
14	8333894-8	RELAY - STARTING - 115 VOLT	1	
14	8333894-10	RELAY - STARTING - 230 VOLT		
15	8045052-28	OVERLOAD PROTECTOR - 115 VOLT	1	
15	8045052-16	OVERLOAD PROTECTOR - 230 VOLT		1
16	8344305	SPRING - OVERLOAD	1	1
17	8344308	COVER - TERMINAL	1	1
18	8344306	BALE STRAP	1	1
19	4060716	DISCHARGE LINE 1	1	
20	1211287-003	SUCTION LINE WELD	1	1
21	8365271	INSULATION - 12 INCHES	1	1
22	8365271-3	INSULATION - 24 INCHES	1	1
23	4060480-001	ACCUMULATOR - 13 INCHES	1	1
24	4205468	DRIER	1	1
25	4202633	SERVICE LINE	1	1
26	4205106	FAN GUARD	1	1
27	8800766	#8-32 x 1/2 PHILLIPS SCREW	1	1
28	4033631-000	POWER CORD	1	1
29	4033683	CORD - STRAIN RELIEF BUSHING	1	1
30	8359801-2	SNAP BUSHING - SPLIT	1	1
31	4933527	CONNECTOR - LINE SPLICE	2	2
32	4033712	CABLE TIE	A/R	A/R
33	4205306	STANDOFF BRACKET	1	1
34	7332474-008	TIE ROD	1	1
35	7332476-000	.156 STUD DIA PUSHNUT	1	1

A/R=AS REQUIRED

# REFER ASSEMBLY



## REFER ASSEMBLY

ITEM	PART NUMBER	DESCRIPTION	TYPE "A"	TYPE "B"
	1212643	EVAPORATOR ASSEMBLY-115 VOLT	X	
	1212643-001	EVAPORATOR ASSEMBLY-230 VOLT		X
1	4206100	CONDENSATE PAN 1	1	
2	4206047	EVAPORATOR COIL	1	1
3	7250135-003	HOLE PLUG, BPF-3/4"	1	1
4	4202547	LABEL - THERMOSTAT	1	1
5	4050240	#8-32 x 3/8 PHIL PH MACHINE SCREW 2	2	
6	4060116	PLASTIC WIRE CLAMP	1	1
7	4050202	#8-18 x 1/2 PHIL HW/HTK	2	2
8	8352837	#10-32 U TYPE SPRING	1	1
9	4202330	THERMOSTAT MOUNT	1	1
10	8800852	#8-32 x 3/8 PH TYPE T	4	4
11	4202526	THERMOSTAT 1	1	
12	4034344-000	EVAPORATOR FAN - 115 VOLT	1	
12	4034344-001	EVAPORATOR FAN - 230 VOLT		1
13	4206101	EVAPORATOR COVER	1	1
14	8800829	#10-24 x 3/8 PHL TH W/ETW	6	6
15	4203181-002	SNAP BUSHING 1	1	
16	8800636	#8-18 x 1/2 PHIL PH SCREW	8	8
17	4202327	HARNES - REFRIGERATION	1	1
18	4060006-500	1/4" X 1/2" FOAM TAPE	8.5 FT	8.5 FT
19	8359801-2	SNAP BUSHING - SPLIT	2	2
20	4202312	EVAPORATOR MOUNT	1	1
21	4202276	EVAPORATOR SPACER	2	2
22	4202340	EVAPORATOR INSULATION	1	1
23	4202316	THERMOSTAT BULF BRACKET	1	1
24	4202315	EVAPORATOR BACKUP	1	1
25	8800833	#10-32 x 1/2 PHIL TH W/ETW	1	1

A/R=AS REQUIRED