

SERVICE MANUAL

CIGARETTE VENDOR

MODEL - 2007

**FAWN SALES INC.
P. O. BOX 1333
8040 UNIVERSITY BLVD.
DES MOINES, IOWA 50305**

SPECIFICATIONS

Model #2007 Cigarette

CABINET:	Height: 68"
	Width: 36"
	Depth: 21½"
	Shipping Wt: 403 Lbs.
CAPACITY:	Selection: 20 @ 31 packs each.
	Size Packs: 60, 80, 85, 100 Millimeter.
	Total Capacity: 620 packs.
COINAGE:	Dual price, between 5¢ and 1.50 with one to five nickel spread. Accepts nickels, dimes or quarters in any combination. Does not make change.
ELECTRICAL REQUIREMENTS:	
	Voltage: 115 Vac., 60 Hz., 1-phase (Sign light only) Mechanism Mechanical

TABLE OF CONTENTS

INSTALLATION	1
LOADING INSTRUCTIONS	1
PRICE SETTING	2
COIN REJECTOR CARE	2
PARTS LIST, DOOR	3 - 4
PARTS LIST, MECHANISM	5 - 6 - 7
PARTS LIST, ESCROW BOX	8
PARTS LIST, CABINET	8
CARE AND CLEANING	9
THE VEND CYCLE	9
TROUBLE SHOOTING	10
WARRANTY	Back

INSTALLATION:

1. Record the Model Number_____and Serial Number_____located on a metal plate on the outside of the cabinet.
2. Remove any tape, braces and other packing materials from the outside of the machine.
3. The keys will be found taped to the delivery pan or located in the coin return pocket.
4. Open the door and remove any shipping brackets, packing and tape.
5. Located in the cabinet is a box that contains the legs.
6. Tilt the machine so one side is raised off the floor approximately 8-inches.
7. Line up the bolts, in the legs, with the holes located in the bottom of the machine.
8. Screw in each leg until tight. Repeat the procedure with the other side of the machine.
9. Move the machine to the desired location. Refrigerated machines should be located with the back at least 4-inches away from any obstruction that would interfere with the air flow to and from the machine.
10. The machine must be level to operate correctly. Leveling is done by adjusting the leveling screws located at the bottom of each leg. Start with the leveling screws, screwed in as far as possible. Adjust so the machine is level and does not rock or teeter on any of the legs.

LOADING INSTRUCTIONS:

CIGARETTE DISPENSER AND LABELS:

1. Price tabs, cigarette identification labels, etc., are packed in the coin box. Insert these in the identification holder in the door.
2. Load each column with the brand of cigarettes desired.
Front stacks only — 60 mm, Regular size packs.
Front or Rear stacks — 80 mm, Queen or Hard packs.
Front or Rear stacks — 85 mm, King size packs.
Rear stacks only — 100 mm, Extra long packs.
Note: The pull bars alternately operate the front and rear columns, beginning from the left. Be sure to place the identification labels in the correct holder in the door.

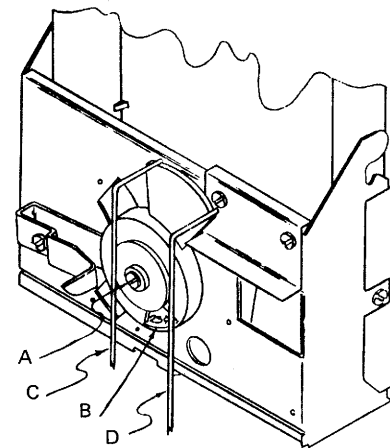
MATCH DISPENSER:

1. The match dispenser is automatic and vends a book of matches with every play.
2. Swing the match columns forward by releasing the catch lock at the side of the columns.
3. Load each column with an equal number of matches.
4. Be sure these are placed in the column so that the striking surface of each book is opposite the one directly above and below and that the striking surface is up.

PRICE SETTING:

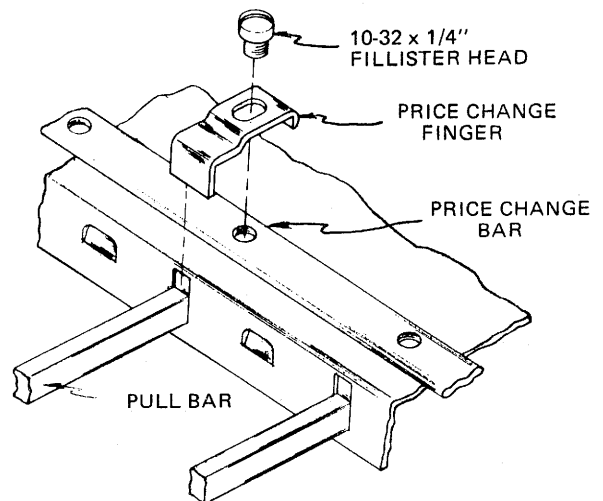
SETTING THE FIRST PRICE:

1. The first price wire "C" will always remain in the "O" slot of the wire guide. The first price will be equal to or less than the second price.
2. To remove the SCS unit, remove the bolt holding the top of the unit. Swing the unit slightly to the right and lift off.
3. Loosen the center screw "A", and rotate the nylon price wheel until the desired price appears centered in the price window "B". The price in the window will be the low or first price only. The second price is set with the price wire.
4. Retighten the center screw "A", and replace the unit.



SETTING THE SECOND PRICE:

1. Loosen the wing nut on the wire retainer, raise it as high as the slot will allow. Retighten the wing nut to hold the retainer in place.
- Note: Each slot away from the "O" slot represents a nickel advance in price from the first price.
2. Insert coins equal to amount of first price setting, pull one of the pull knobs out and hold it in that position.
 3. Lift the second price wire "D", into the desired price slot.
 4. Slowly release the pull knob, return the wire retainer over the wire guide and retighten the wing nut.



PRICE CHANGE FINGERS:

1. For each selection that you wish to vend for the higher price, fasten a price change finger to the price change bar directly over the pull bar.
2. Do not use a price change finger for those selections vending at the lower price.

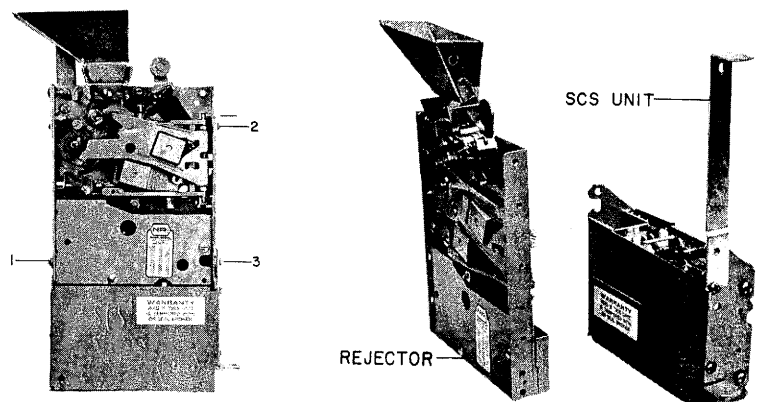
COIN REJECTOR CARE:

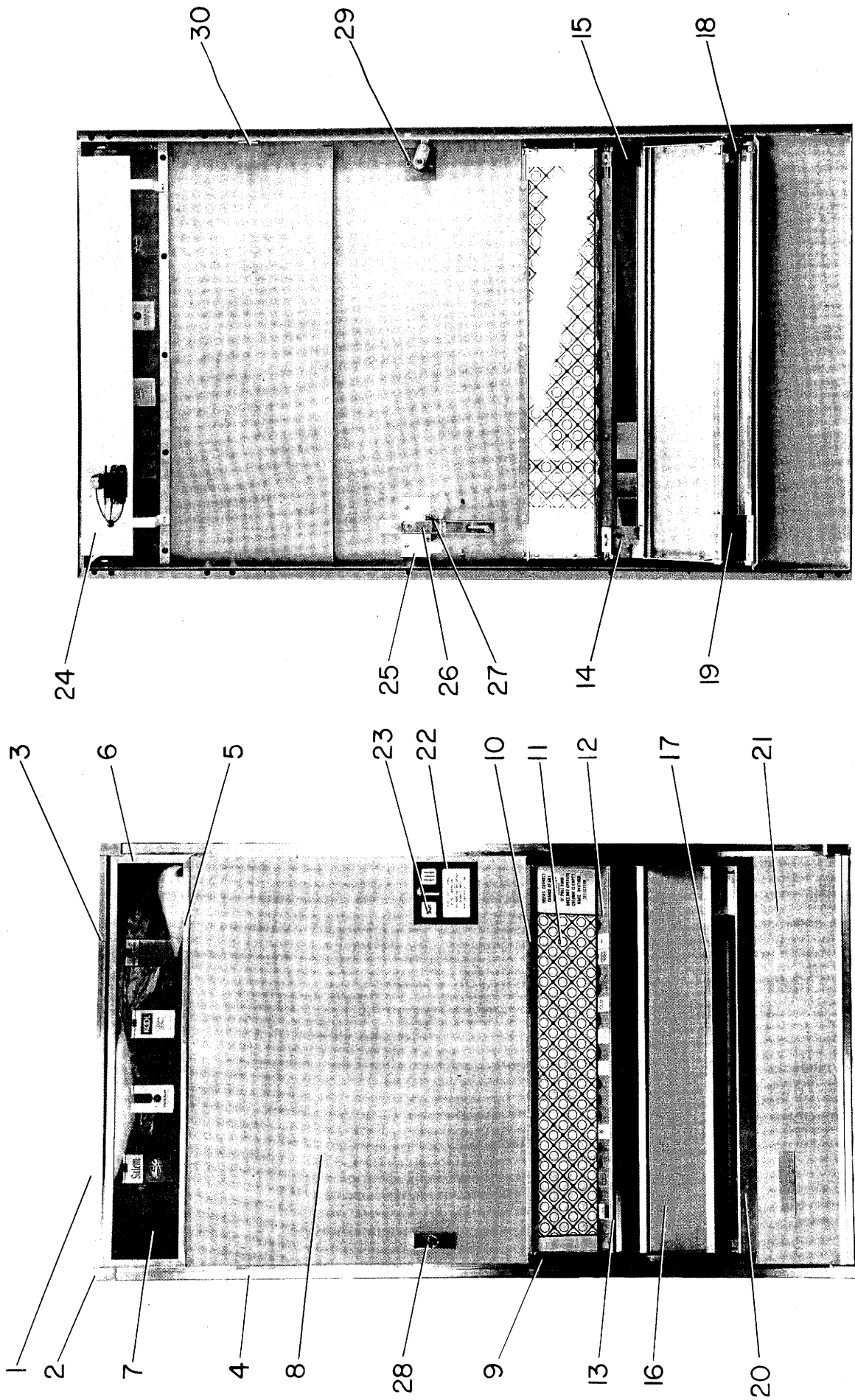
CLEANING:

1. Remove the rejector from the SCS unit, by removing three bolts. Note the size of each bolt. See Illustration.
2. Soak the rejector in warm water and a mild household detergent for approximately ten minutes.
3. Use a stiff paint brush or toothbrush to clean foreign matter from the bearings and the rest of the rejector.
4. Rinse in warm water.
5. Dry thoroughly by shaking or by applying filtered compressed air.

LUBRICATION:

1. All cradles, bushings and pins must be re-oiled with SAE 10W auto oil. One or two drops is sufficient. DO NOT OVER OIL.
2. Nylon parts are self-lubricating.
3. Reassemble the rejector and SCS unit.

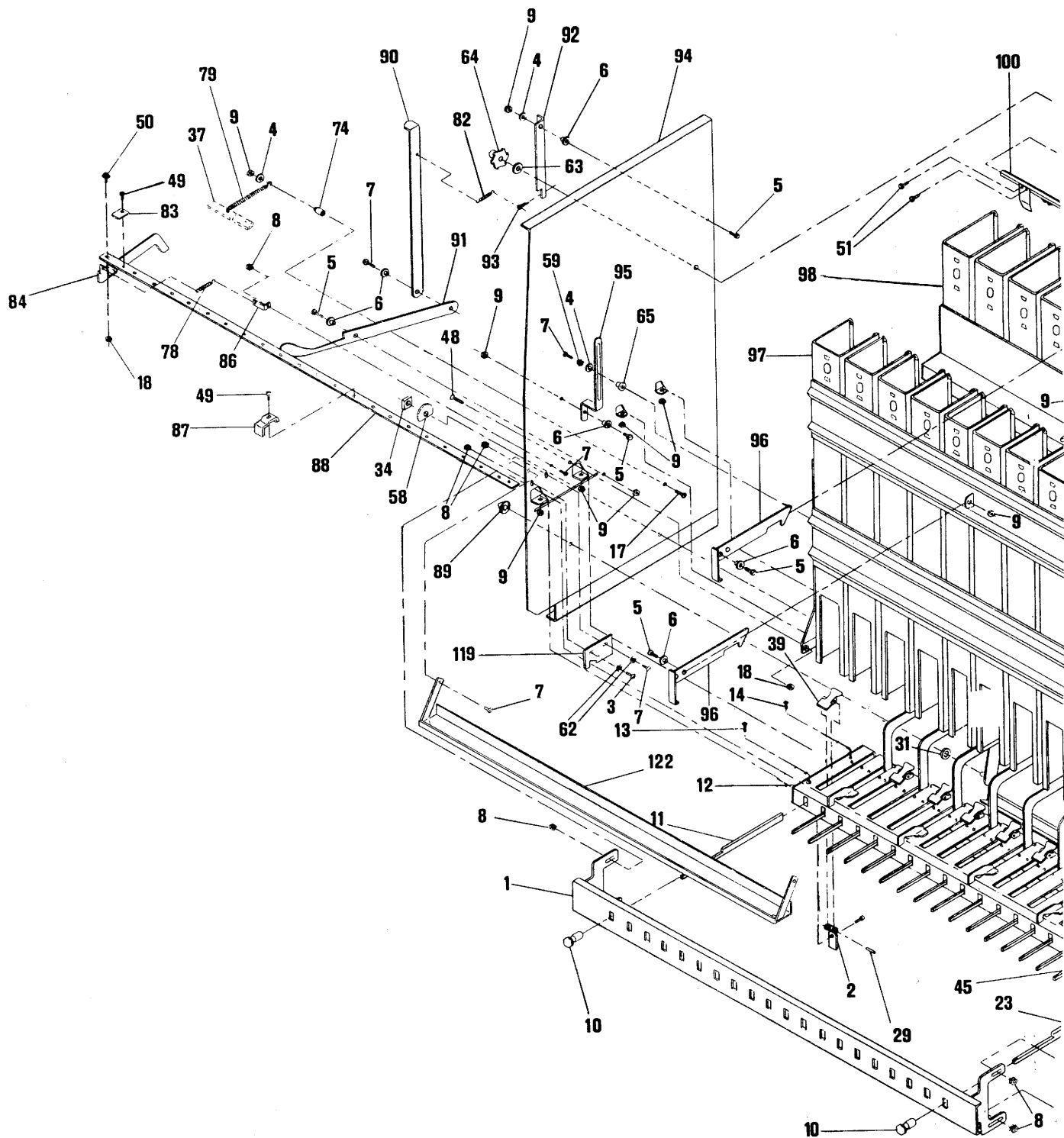


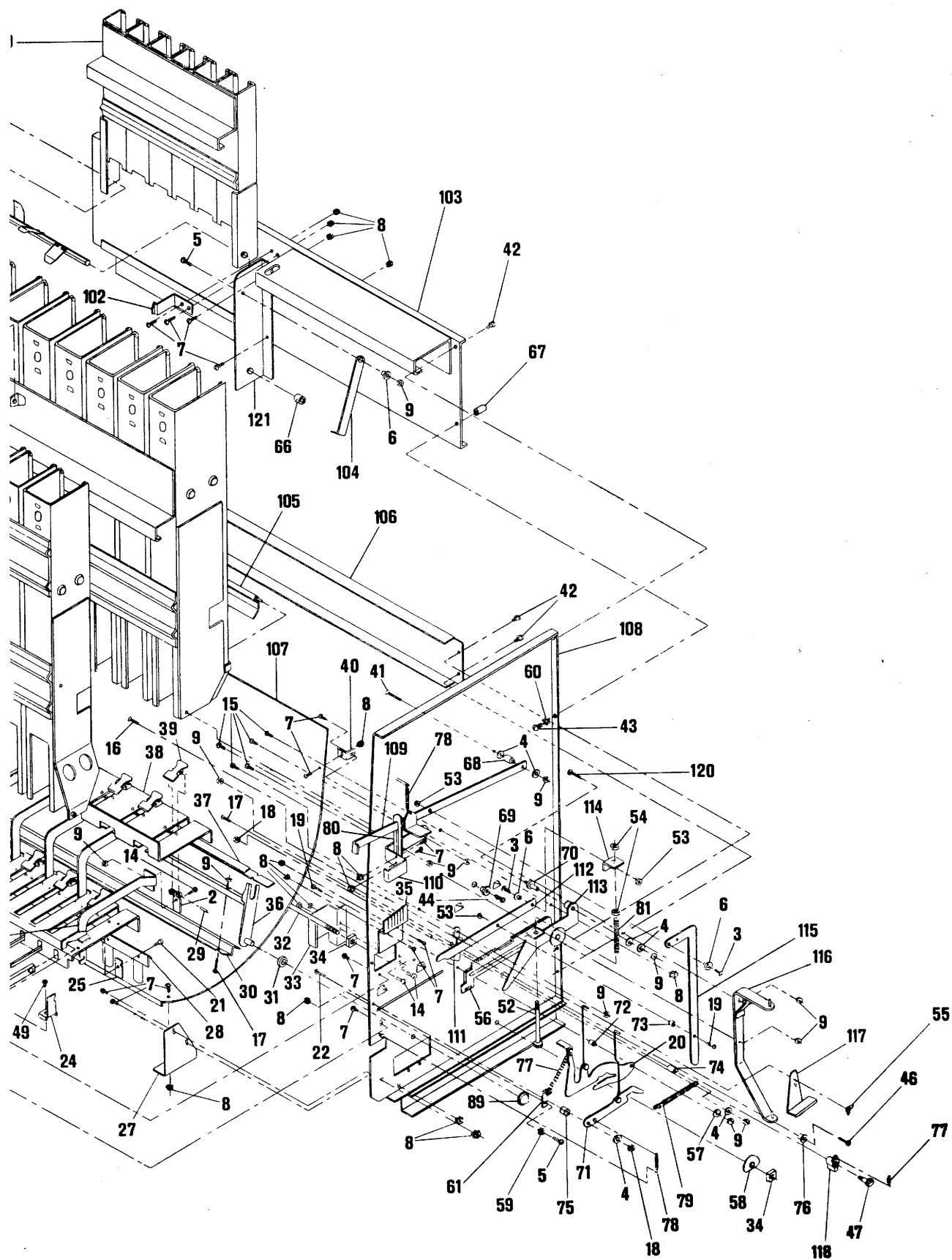


DOOR ASSEMBLY

DOOR PARTS LIST

Item No.	PART NUMBER	No. Req.	PART DESCRIPTION	Item No.	PART NUMBER	No. Req.	PART DESCRIPTION
1	100636	1	Door Assembly (Complete)	17	22276	1	Bottom Display Molding
-	100637	1	Door Shell Assembly	18	8310	1	Delivery Pan Spacer (Left)
2	7201	4	Door Corner Blocks	19	8311	1	Delivery Pan Spacer (Right)
-	7235	1	Upper Hinge Support	20	22273	1	Door Sill
-	7355	1	Hinge Anchor Plate	-	20071	1	Label, Minors Forbidden
3	22271	2	Door Trim (Top & Bottom)	21	8313	1	Bottom Door Panel (Paint)
4	22272	2	Door Trim (Sides)	-	8312	1	Bottom Door Panel (Wood Grain)
5	22270	2	Picture Trim (Top & Bottom)	22	100288	1	Coin Insert Plate Assembly
6	22249	2	Picture Trim (Sides)	-	20217	1	Instruction Label
-	50724	14	T-Bolts	-	25138	1	Coin Insert Window
7	25450	1	Cigarette Picture	23	25172	1	Price Window (State Price Desired)
-	25031	1	Picture Window	24	100640	1	Light Reflector (Complete)
-	25447	1	Picture Diffuser	-	100641	1	Light Reflector
-	25476	1	"Cigarette" Sign (Brown on White)	-	6611	1	Light Bracket
-	25035	1	"Cigarette" Sign (Orange on Brown)	-	33669	1	Ballast
8	8303	1	Upper Door Panel (Paint)	-	33617	1	Starter Holder
-	8305	1	Upper Door Panel (Wood Grain)	-	33661	1	Starter
9	100639	1	Selection Display Assembly (Complete)	-	33548	2	Lamp Holder
-	100592	1R-1L	Extrusion Holder Assembly	-	33513	1	Lamp
10	22275	1	Top Display Molding	-	33671	1	Rubber Grommet
-	6577	2	Retainer Strip	25	100250	1	Gooseneck Assembly
11	25446	1	Display Window	26	100593	1	Rejector Slide Assembly
-	6582	2	Window Panel Holder	-	30026	1	Coin Reject Knob
12	8316	1	Facsimile Display Panel	-	30053	1	Coin Reject Slide Bushing
-	25016	-	Facsimile-Assorted Cigarette Pictures	27	21015	1	Coin Reject Spring
13	22274	2	Pull Bar Molding	-	5057	1	Reject Spring Bracket
14	8308	1	Pull Bar Spacer (Right)	28	60024	1	Lock & Cam Assembly
15	8309	1	Pull Bar Spacer (Left)	29	7681	1	Lock Plate
16	8317	1	Lower Front Panel (Paint)	-	30163	1	Lock Spacer
-	8318	1	Lower Front Panel (Wood Grain)	30	100538	1	Lock Bar Assembly

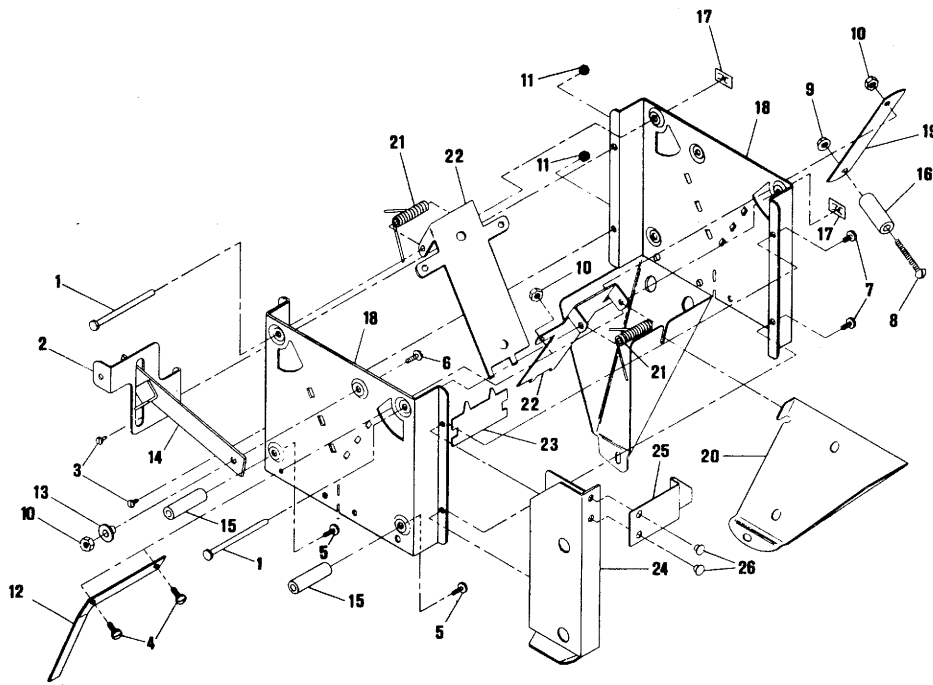




MECHANISM PARTS LIST

Item No.	PART NUMBER	No. Req.	PART DESCRIPTION	Item No.	PART NUMBER	No. Req.	PART DESCRIPTION
1	100622	1	Pull Bar Plate Assembly	63	*50601	1	3/8 Wrought Washer
2	5117	20	Pull Bar Guide Clevis	64	*5112	1	Index Wheel
3	50244	3	8-32 x 1/2 Slotted Truss Head	65	30050	1	Stack Holding Arm Bushing
4	50575	10	Watkins Washer	66	*30036	1	Match Dispenser Collar
5	50245	7	8-32 x 1/2 Slotted Pan Head	67	30035	2	Tie Down Spacer
6	30053	5	Shoulder Bushing	68	30080	1	New Spring Assembly Spacer
7	50234	29	8-32 x 3/8 Slotted Truss Head	69	30032	3	Bushing For Rear Stack Hinge
8	50512	30	8-32 Keps Nut	70	30002	1	Reset Inner Bushing
9	50511	36	8-32 Fogg McLean Nut	71	100566	1	Control Bar Latch Assembly
10	30077	20	Pull Bar Knob	72	30008	1	Price Change Control Bushing
11	7641	10	Pull Bar	73	30015	1	Nudger Cam Hinge Bushing
12	100624	1	Mech. Plate Assembly	74	30079	3	Spring Assembly Spacer
13	50232	2	8-32 x 3/8 Slotted Flat Head	75	30007	1	Control Bar Latch Bushing
14	50233	19	8-32 x 3/8 Slotted Round Head	76	30037	1	Ratchet Slide Bushing
15	50231	5	8-32 x 3/8 Slotted Oval Head	77	21021	1	Ratchet Pawl Spring
16	50222	1	8-32 x 5/16 Slotted Flat Head	78	21020	4	Price Change Bar & Scavenger Arm Spring
17	50271	5	8-32 x 1 Slotted Pan Head	79	21015	2	Control Bar Spring
18	50521	4	10-32 Fogg McLean Nut	80	5412	1	Reject Arm Guide
19	50257	2	8-32 x 3/4 Slotted Round Head	81	21046	1	S.C.S. Rejactor Reset Spring
20	100567	1	Price Change Control Assembly	82	21024	1	Index Wheel Nudger Spring
21	50236	20	8-32 x 3/8 Socket Head	83	5891	1	Price Bar Spacer
22	50344	1	10-32 x 1 Slotted Round Head	84	100626	1	Price Change Return Arm Assembly
23	100623	10	Rear Pull Bar Assembly	—	20049	1	Coinage Selection Label (Not Shown)
24	5422	1	Price Change Bar Extension	86	5817	1	Price Change Return Spring Bracket
25	5107	10	Pull Bar Guide	87	5165	0-20	Price Change Finger
—	100565	1	Reset Arm Guide Assembly (Not Shown)	88	4687	1	Price Change Bar
27	6604	1R & 1L	Delivery Pan Bracket	89	50566	2	Price Change Bar
28	100192	20	1/8 x 3/4 Roll Pin	90	*5101	1	Nudger Bar For Index Wheel
29	50725	20	1/8 x 3/4 Roll Pin	91	*5102	1	Match Dispenser Control Arm
30	4773	1	Rocker Arm Anti Cheat	92	*5111-2	1	Back Lash Control
31	50601	2	Rocker Arm Washer	93	*50627	1	1/16 x 1/2 Cotter Pin
32	30140	1	Tie Rod	94	100631	1	Left End Plate Assembly
33	6865	1	Anti Cheat Guard	95	5106	1	Front Stack Slide Stop
34	50544	4	3/8-16 Nut	96	5126-2	2	Stack Latch Assembly
35	5408-2	1	Wire Guide	97	100629	1	Front Stack Assembly
36	100646	1	Rocker Arm Bar Assembly	98	100627	1	Back Stack Assembly
37	100647	1	Control Bar & Shim Assembly	99	*100201	1	Match Stack Assembly
38	4830	1	Back Mech. Plate	100	*5104	1	Match Dispenser Rod
39	5087	20	Die Cast Pusher	101	*5115	6	Match Dispenser Paddle
40	4950	2	Pan Bracket	102	*5113	1	Match Stack Latch
41	50294	1	8-32 x 1-1/2 Slotted Flat Head	103	100628	1	Top Back Brace Assembly
42	50434	6	#14 x 3/8 Hex Head Type "B" Sheet Metal	104	*5895	1	Match Stack Hanger
43	50361	2	1/4-20 x 1/2 Slotted Round Head	105	100115	1	Pack Deflector Assembly (Back Stack)
44	50319	2	10-32 x 3/8 Slotted Fillister Head	106	4819	1	Bottom Back Brace
45	4836	10	Pull Bar Extension	107	8329	1	Delivery Pan
46	50252	1	8-32 x 5/8 Slotted Flat Head	108	100630	1	Right End Plate Assembly
47	30038	1	Ratchet Pawl Stud	109	100245	1	Reject Arm Assembly
48	50336	2	10-32 x 7/8 Flat Head Socket Head Cap Screw	110	4694-2	1	Rejactor Stop
49	50316	2-23	10-32 x 1/4 Slotted Fillister Head	111	6717	1	Reset Lever Guide
50	50326	2	10-32 x 1/2 Slotted Fillister Head w/washer	112	100218	1	Rejactor Reset Lever Assembly
51	50223	12	8-32 x 5/16 Slotted Pan Head	113	100203	1	Reset Cam Assembly
52	50386	1	1/4-20 x 3-1/4 Hex Head	114	6716	1	Reset Lever Angle
53	50509	2	8-32 Stover Lock Nut	115	100564	1	Vertical Rejactor Link Assembly
54	50354	2	1/4-20 Fogg McLean Nut	116	100204	1	Rejactor Bracket Assembly
55	50514	1	8-32 Wing Nut	117	5437-2	1	Wire Retainer
56	100213	1	Sliding Ratchet Assembly	118	6483	1	Ratchet Pawl
57	50609	1	1/2 O.D. x .167 I.D. x .050 Steel Washer	119	5197	1	Price Change Bar Bracket
58	50623	2	Tie Washer	120	50286	1	8-32 x 1-1/4 Slotted Round Head
59	50585	3	#8 External Lock Washer	121	*5088	1	Match Dispenser Bracket Support
60	50593	2	1/4 External Lock Washer	122	100243	1	Anti Cheat Channel Assembly
61	5442	2	Rocker Arm Spring Bracket	—	30083	1	Stack Stop (Not Shown)
62	50584	2	#8 Internal Lock Washer	—	8388	1	Back Stack Stop (Not Shown)

* Parts for Match Dispenser (Optional)

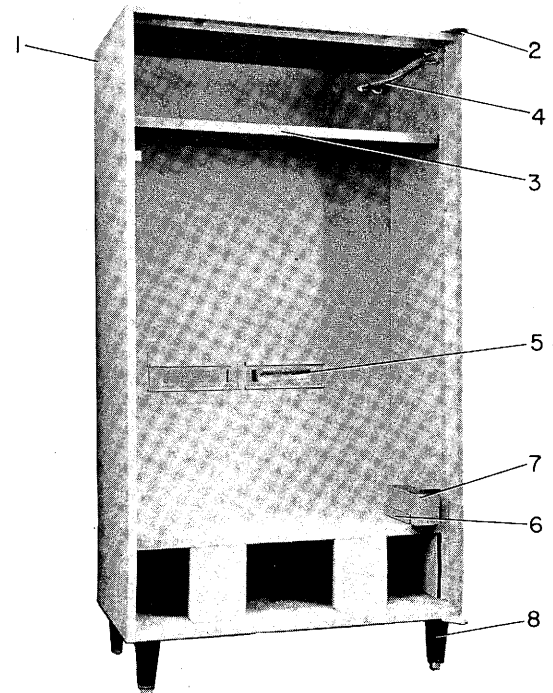


ESCROW BOX PARTS LIST

Item No.	PART NUMBER	No. Req.	PART DESCRIPTION	Item No.	PART NUMBER	No. Req.	PART DESCRIPTION
1	30107	2	Escrow Flapper Pin	14	100207	1	Escrow Reject Arm Assembly
2	5427	1	Anti Cheat Guide	15	30006	2	Escrow Stud
3	50109	2	6-32 x 1/4 Slotted Pan Head	16	30150	1	Escrow Spring Weight
4	50235	2	8-32 x 3/8 Slotted Pan Head	17	50561	2	C 1059-014-27
5	50221	2	8-32 x 5/16 Slotted Binding Head	18	5606-2	2	Escrow Shell
6	50244	1	8-32 x 1/2 Slotted Truss Head	19	21029	1	Escrow Spring
7	50104	2	6-32 x 1/4 Slotted Pan Head Type 23 Self Thrd.	20	5432-2	1	SCS Coin Return Pocket
8	50286	1	8-32 x 1-1/4 Slotted Round Head	21	21019	2	Escrow Flapper Spring
9	50509	1	8-32 Stover Lock Nut	22	5407-2	2	Escrow Flapper
10	50511	3	8-32 Fogg McLean Nut	23	5430	1	Escrow Coin Divider
11	50501	2	6-32 Keps Nut	24	100208	1	Overflow Channel Assembly
12	5993	1	Flapper Control	25	21036	1	Latch
13	30053	1	Shoulder Bushing	26	50706	2	1/8 x 3/32 Brass Tubular Rivet

CIGARETTE CABINET PARTS LIST

Item No.	PART NUMBER	No. Req.	PART DESCRIPTION
—	100632	1	Cabinet Assembly (Complete)
1	100633	1	Cabinet Shell
2	100574	1	Upper Hinge Assembly
3	8327	1	Shelf
4	33631	1	Power Cord
—	33689	1	Cord Relief Bushing
5	25001	2	Inspection Window
6	6681	1	Coin Box Holder
7	100095	1	Coin Box Assembly
—	50604	1	Nylon Washer
8	60040	4	Sanitary Leg



CARE AND CLEANING:

CABINET:

Wash with water and soap, both inside and out. Wipe dry with clean cloth.

DELIVERY TRAY:

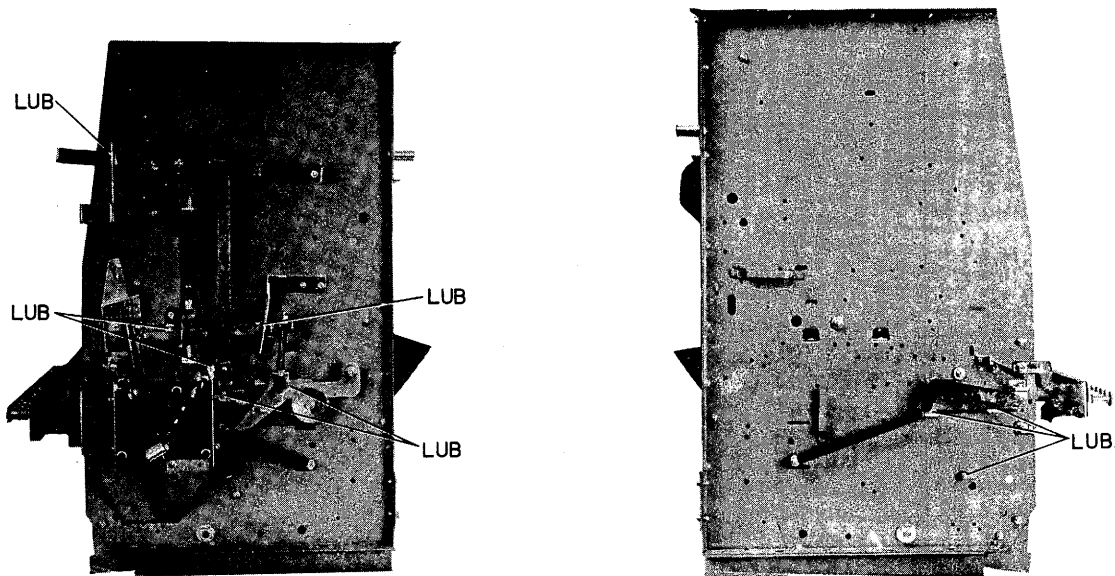
Occasionally clean and wax with a good auto wax.

LUBRICATION:

For smooth operation of the machine the moving parts should be kept lubricated, approximately once a year. Use Lubriplate, white grease or similar type of grease on the following parts.

1. Ends of all control bars where they come through the end plates.
2. The ratchet, located behind the coin mechanism.
3. Price change return arm, located on the left-hand side of the machine.

Note: Use grease sparingly. The lubricant is quite durable and is not necessary to use too much. Excessive grease will accumulate dust and dirt, causing difficulty in operating the mechanism.



THE VEND CYCLE:

The cycle begins when the proper amount of coins are inserted. They travel through the coin mechanism to the escrow box. On the way through, each coin is checked for correct size, weighed and counted. Any coins that do not check correctly will be returned. The coins mechanically activate wires for each coin, advancing the price wheel to the preselected price setting. The coins are then held in the escrow box. When the pull knob is pulled, the control bar is moved forward. This will let the price wires move down, and rest upon the nylon price wheel. The price wires will hold up the locking fingers, letting the pull knob move outward. As the pull knob continues outward, the reset cam assembly will ride on the sliding ratchet, causing the rejector reset lever to reset the price wheel to its starting position. At the time the ratchet pawl reaches the end of the teeth on the sliding ratchet, the escrow box will open dropping the coins into the coin box. The product is vended, and the machine is ready for another vend.

TROUBLE SHOOTING

IMPORTANT: Make sure this manual is completely followed before contacting a Factory Service Representative. When doing so give Model Number and Serial Number of the machine.

1. Rejects all coins.	(a) Machine not level. (b) Dirty rejector. (c) Defective rejector. (d) Bent coins in rejector.
2. Accepts coins, but will not vend.	(a) Coin lodged in rejector. (b) Coin lodged in coin chute. (c) Coin chute out of alinement. (d) Defective rejector. (e) Product sold out.
3. Plays for price lower than setting.	(a) Price setting incorrect. (b) Price change wire(s) bent toward the back of the machine. (c) Wire guide adjusted back too far. (d) Price change finger over second price pull bar bent up.
4. Accepts coins, will not play for price set.	(a) Price change return arm adjusted too high. (b) Price change wire(s) bent up.
5. Set for dual pricing, will not play on higher price.	(a) Wire guide adjusted forward too far. (b) Second price wire bent too high. (c) Price change control tab bent too low.
6. Second price plays for first price.	(a) Price change control tab bent too far back. (b) Wire guide adjusted back too far. (c) Price change finger not over pull bar for selection of higher price.

WARRANTY

The manufacturer warrants to the original purchaser of this vendor that any part which proves to be defective in material or workmanship under normal use and service, will be repaired or replaced without charge other than transportation charges, for a period of (1) one year from the date of purchase. This warranty does not, under any circumstance, place the factory liable for service labor and related costs. All replacements or repairs under this warranty are to be handled, so far as possible, through the dealer from whom the equipment was purchased, under no circumstances are defective parts to be returned to the factory without permission. There is no warranty on the paint. It is being expressly understood that the warranty is void if the vendor has not been properly serviced or if there is evidence of misuse.