

SERVICE MANUAL

PARTS LIST

CIGARETTE VENDOR

IMPORTANT

This vendor was thoroughly "Coin Tested" and carefully packed before leaving the factory.

Upon acceptance by the carrier, they assume full responsibility for its safe arrival. Should you receive this vendor in a damaged condition, apparent or concealed, this claim for damage must be made BY YOU upon the CARRIER.

Should VISUAL INSPECTION, upon receipt of this shipment, show loss or damage, it must be noted on the freight bill or express receipt and signed by the agent of the carrier. Failure to do this may result in the carrier refusing to honor the claim.

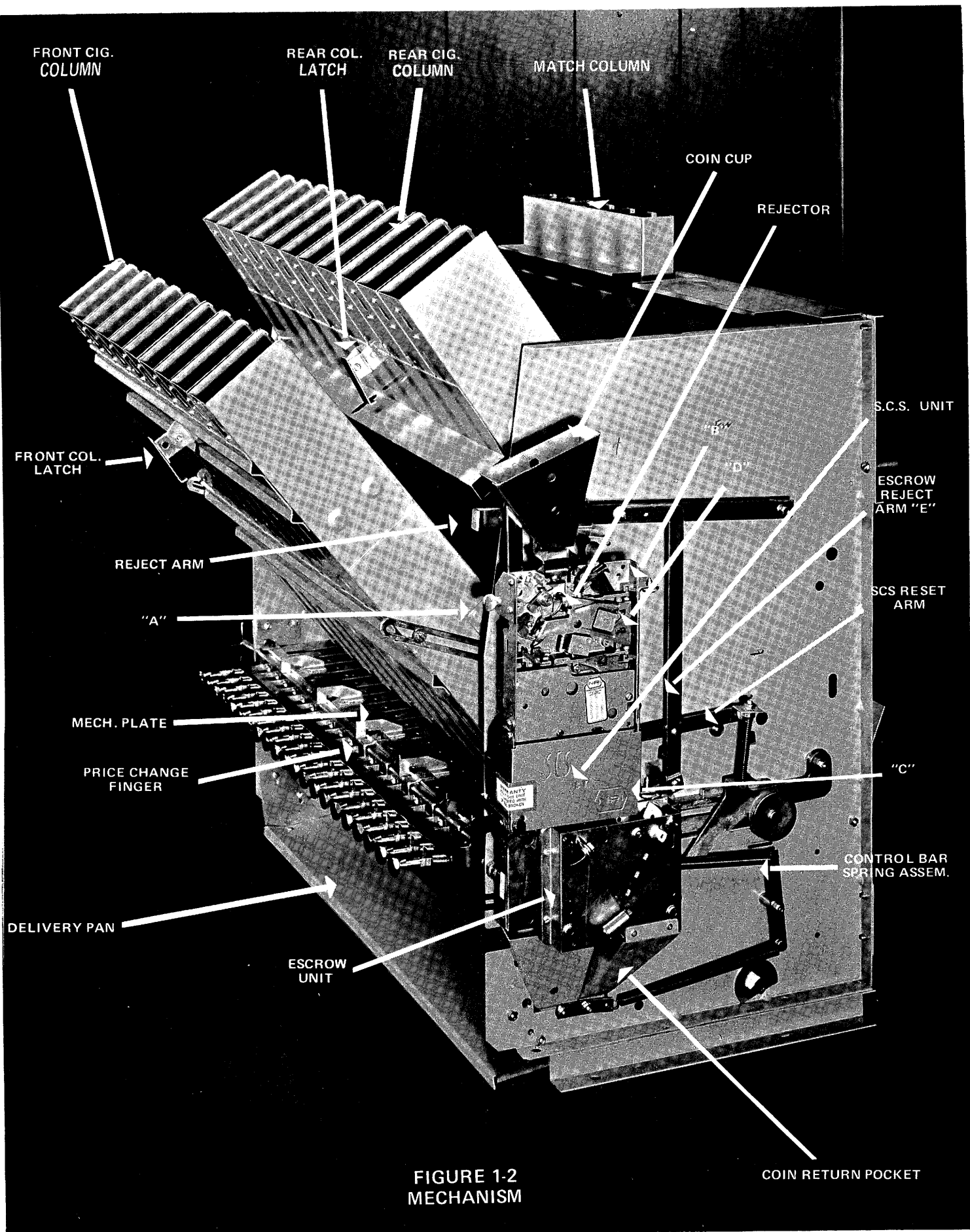
When loss or damage is NOT APPARENT until the vendor is unpacked then a claim for concealed damage is entered. When damage is discovered, make a written request to the carrier for inspection. You must make this request for inspection within FIFTEEN DAYS of the delivery. The carrier will furnish you with an inspection report and necessary forms for filing a concealed damage or loss claim since this is the carrier's responsibility.

The carrier can refuse to honor your claim unless they have had an opportunity to examine both the carton and fillers and make notations on the inspection report as to the type of carton and any damage to them.

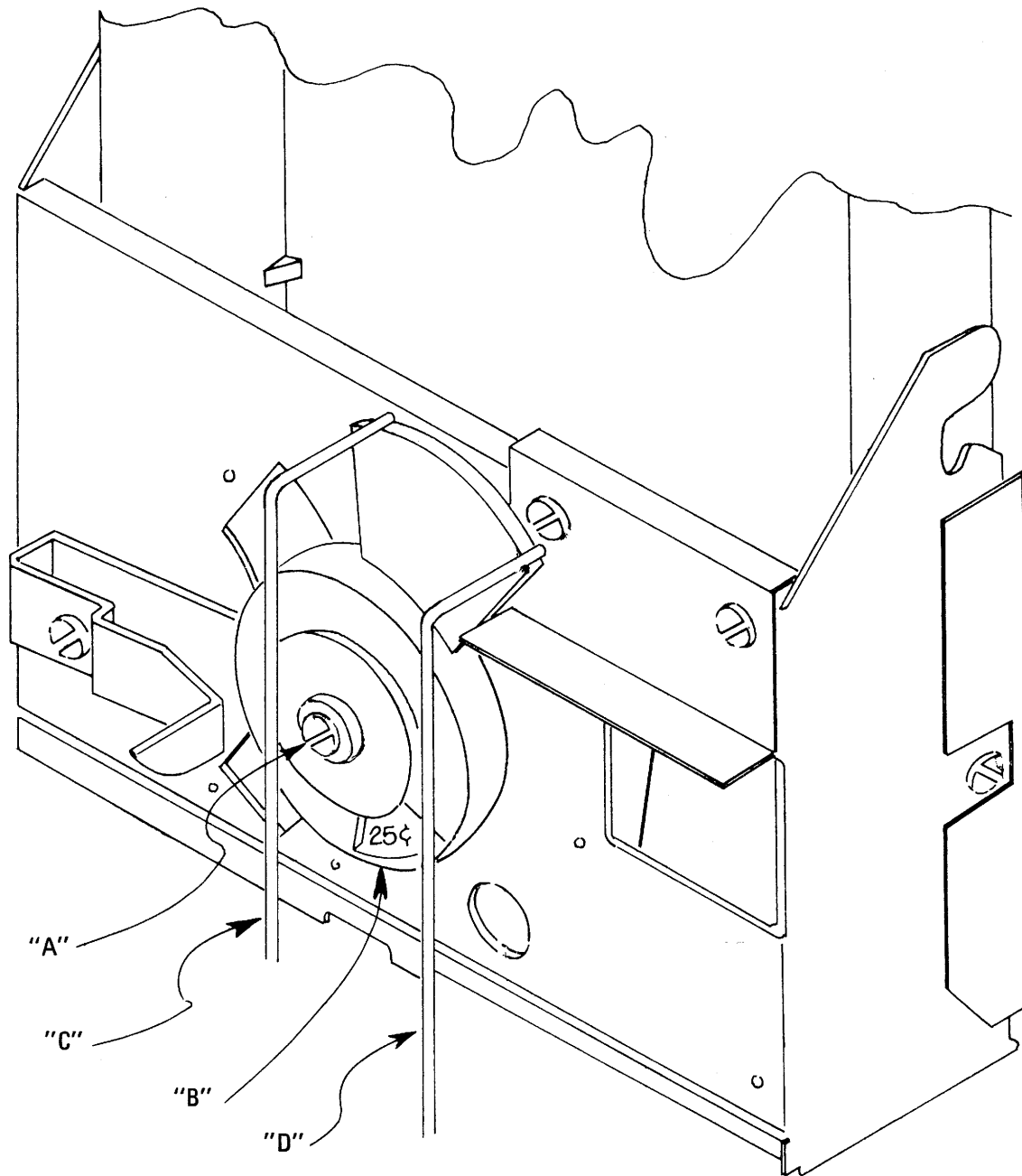


WARRANTY

The Seller agrees to replace all defective parts free of charge for a period of 12 months from the date of purchase. In the event of any errors in shipment, or the machine is defective, Purchaser is to notify the Seller promptly by registered mail (requesting a return receipt), stating trouble; so that corrections can be made or new parts supplied, if needed, or the machine promptly sent to the company for repair or replacement in which event the company will pay the transportation charges one way. This machine is designed for inside operation and should be placed outside only in dry weather. There is no warranty on the paint.



MODEL 13-03-032
SCS UNIT



MODEL 13-03-032

SCS UNIT

The new SCS unit may be set to vend from .05 cents to \$1.50 using any combination of nickels, dimes or quarters and may be set for two different prices at the same time, with one to five nickel spread.

SETTING THE PRICE SELECTOR

1. The first price wire "C" should always remain in the number one slot of the wire guide.
2. To set the No. 1 price, remove the coin mechanism and loosen the center screw A, then rotate the price wheel until the desired price appears in the price window B, next re-tighten screw and replace the coin mechanism.
3. To set the second price wire D, loosen the wing nut on the price guard and raise the guard as high as it will go and re-tighten the wing nut enough to hold the guard in place. Insert coins and pull one of the pull knobs. Hold the pull knob in this position and lift upwards on the price finger wire D, located closest to you and place it in the desired price slot. Each slot represents one nickel advance above the No. 1 price setting.
4. Release the pull knob and return the price change guard to its original position and re-tighten the wing nut.
5. Place a price change finger on the price change bar directly over the pull knob that you desire to sell at the higher price.
6. No price change finger is required on the column selling at the No. 1 price setting.

SECTION 1. INSTALLATION

1-1. Introduction

This service parts manual contains unpacking, installation, maintenance, and parts information for the "Fleetwood" model cigarette machine manufactured by the Fawn Engineering Corporation of Des Moines, Iowa. This machine is illustrated in figure 1-1.

Throughout the installation procedures contained herein, references are made to the parts illustrations in section 11 of this manual. References are made by figure number and index number. Study figures 1-2 and become familiar with the major assemblies of the cigarette machine.

1-2. Unpacking

1. Using a small pair of tin snips, cut both bands on carton.
2. Remove the carton top and slide the outer sleeve off over the top of machine. This will expose the machine and the door may now be opened.
3. The key to your machine will be found taped to the delivery pan. Open the door and remove the two shipping brackets located on each side plate of the unit.
4. Remove the base carton.

NOTE

If damage occurred during shipment, see warranty instructions page No. 1.

1-3. Installation of Legs

1. In the storage compartment, you will find two sets of legs. Tilt the machine so the left side is raised off the floor approximately 8 inches.
2. Place one set of legs under the machine with the slanted leg toward the front, lining up the screws in the legs with the holes in the bottom of the cabinet.
3. Place the bolts through the holes provided and secure the nuts on the outside. After left legs are installed, repeat this procedure for the right legs. Both standard legs and caster are installed in the same manner.
4. If your machine is equipped with standard legs, a leveling screw is provided for each of the four legs. These screws can be adjusted from outside the machine. Adjust each screw so the machine is level and does not rock or teeter on any of the legs.
5. Remove plywood brace from rear of cabinet and replace screws in the same holes.

1-4. Loading Instructions

1. Price tabs, cigarette identification labels, etc. are packed in the coin box. Insert these in the cigarette identification holder in the door. One set has been inserted for illustration.
2. Load each column with the brand of cigarettes desired. Please note that the pull bars alternately operate the front and back columns beginning from the left. BE SURE to place the identification labels in the correct holder in the door.
3. The match dispenser is of the automatic variety and vends a book of matches with every play.
4. Swing match columns forward by releasing the catch lock at the side of the columns for easy loading.
5. Load each column with an equal number of matches.
6. Be sure these are placed in the column so that the striking surface of each book is opposite the one directly above and below and that the striking surface is up.

SCS COIN MECHANISM

REMOVE SCS UNIT

Fig. 1-2

1. Remove screw "A" and lift unit off of pins "B" and "C".
2. When replacing SCS unit, make sure the reset pin located in the slot of the plastic price wheel is depressed so the wheel is in the no credit position. You are now ready to swing the SCS unit slightly to the right and line up pins "A" and "B" with mounting bracket "D" and lower the unit onto the pins. Next swing the unit to the left making sure the reset pin is on the under side of the reset arm "E". You are now ready to replace the mounting screw "A".

This unit may be set to vend from .05 cents through \$1.50 using any combination of nickels, dimes or quarters and may be set for two different prices at the same time, I. E. 30 cents and 35 cents.

SETTING THE HIGHER AND LOWER COINAGES OF ANY PRESELECTED SETTING

LOWER: Remove the price change fingers from in front of the column to be set for the lower price. (DO NOT REPLACE THE SCREW AS IT WILL HOLD THE PRICE CHANGE BAR IN ITS UNLOCKED POSITION).

HIGHER: Install a price change finger in front of the column to be set for the higher price.

NOTE: On the 11, 15 and 21 column models the pull bars alternately operate the front and back rows of columns beginning from the left.

PRICE CHANGE BAR LOCKING DEVICE

If your machine is set to dispense cigarettes for one price ONLY, I.E. 35 cents, the price selector has been pre-set at the factory for 35 cents and 40 cents operation with the price change fingers removed.

A red locking bar has been installed to lock the higher coinage setting out of operation.

To set the machine for two-price operation at the same time, it will be necessary to remove the locking bar. This is held in place by a wing nut.

Should the machine be set for a higher single coinage in the future, such as 40 cents, the price selector should be changed to the 40 cents and 45 cents setting for best operation, leaving the locking bar in place.

GENERAL MAINTENANCE

REJECTOR:

Dirt and grime can collect in the rejector from dirty and greasy coins and can hinder or in some cases even stop the operation of the machine.

Approximately every six months remove the rejector and clean thoroughly in a cleaning solution such as gasoline. Usually dipping the rejector in the cleaner three or four times and brushing the cleaning solution throughout the rejector with a soft-bristled brush is sufficient to remove the grime.

Never oil this part.

OTHER MOVING PARTS:

Place a small amount of lubriplate or similar type grease on the following:

1. On the ends of all control bars where they come through the end plates.
2. Ratchet - located behind the coin chute.
3. Price change return arm - located on the left-hand side of the machine.
4. Match dispenser connecting arms - located on the left-hand side of the machine.

MISCELLANEOUS:

1. Occasionally wax and clean the delivery tray with a good auto wax.
2. Occasionally clean and wax the cabinet to insure a longer lasting and more attractive piece of equipment.

SERVICE

IF MACHINE FAILS TO ACCEPT A COIN:

1. Machine not setting level - This is the most common cause of this malfunction as the rejector which must weigh, measure and check the metal content of the coins, must be level to function at its best (see assembly instruction for levelling the machine).
2. Grime in the rejector (see cleaning rejector above).

IF MACHINE ACCEPTS COINS BUT WILL NOT VEND:

1. Coin lodged in the rejector, coin chute or coin channel. This is usually caused by a bent coin or it may be dirt and grime in the rejector.
2. Coin Channel (located behind coin insert on door) may have been bent slightly to either the right or left allowing coins to miss the rejector. This can be corrected by bending the channel very slightly either way so it is centered over the rejector.
3. Some new coins may stick in the coin channel and it may be necessary to open it up slightly. This is easily done by inserting a screw driver in the channel and prying it very slightly to give more clearance.

IF MACHINE PLAYS FOR PRICE LOWER THAN THE SETTING:

1. Be sure the correct price setting has been made (see instructions pertaining to the setting of the coinage).
2. Price change finger may be bent allowing the pull bar to slip under it without having to trip the price change bar. An exchange finger will be sent upon request.
3. There may be too much play in the price change return arm. This arm, which is located on the extreme left end of the price change bar, should rest directly on top of the control bar and if there is any clearance between these two parts, bend the end of the control bar very slightly upward to eliminate this.

IF MACHINE IS SET FOR TWO-PRICE OPERATION AND WILL NOT PLAY ON HIGHER SETTING:

1. This can only be caused by the failure to remove the price change locking bar (used on the SCS mechanism only - see instructions pertaining to same).

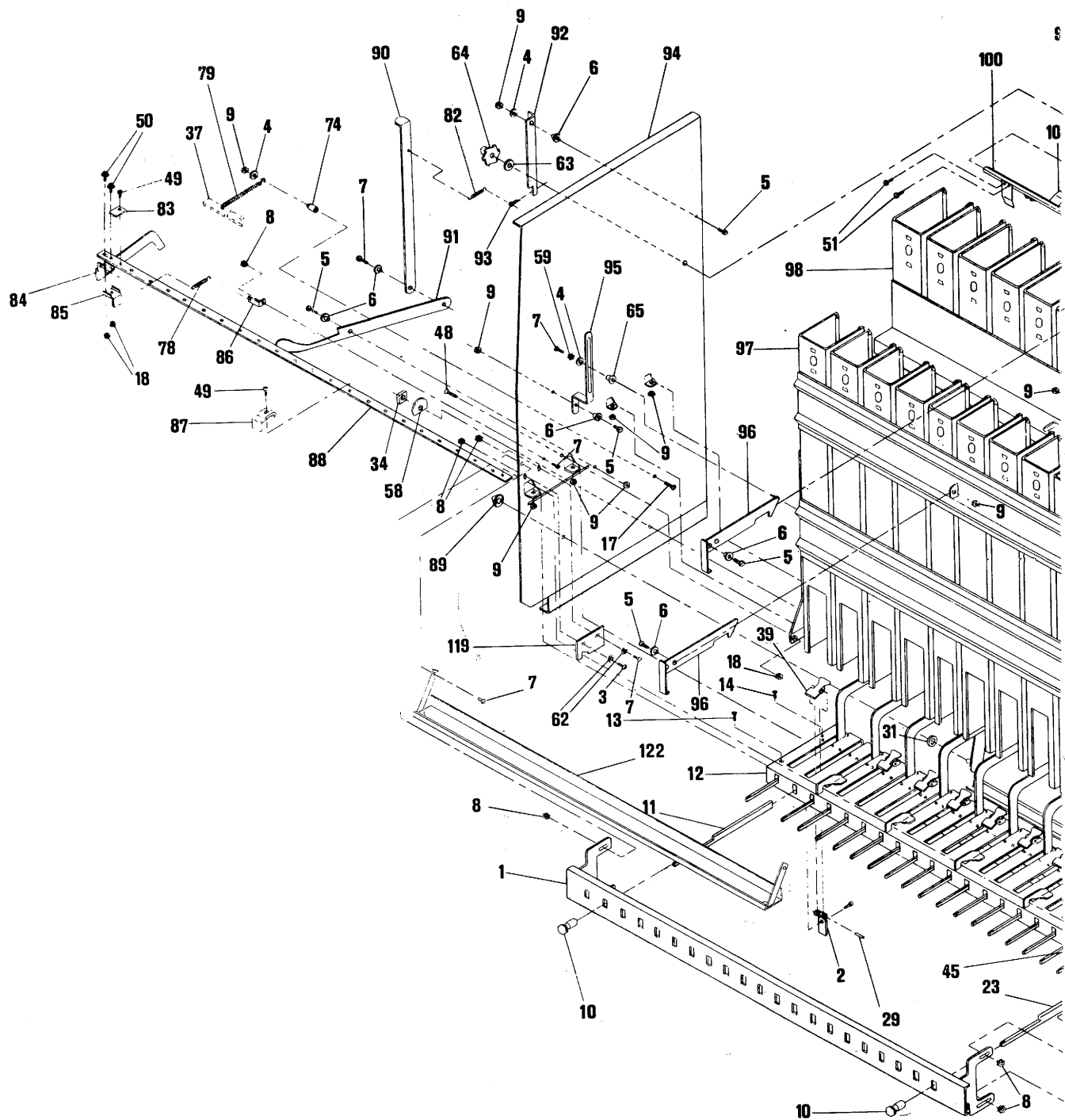
Fig. and Index No.	MECHANISM			
	Part No.	Description	Quantity	Price Ea.
1	6564	Pull Bar Plate	1	\$12.00
2	5117	Pull Bar Guide Clevis	11	1.00
3	50,244	8/32 x 1/2 Slotted Truss Head	3	.25
4	50,575	Watkins Washer No. Cab SC 309	10	.25
5	50,245	8/32 x 1/2 Slotted Pan Head	7	1.00
6	30,053	Shoulder Bushing	10	.25
7	50,234	8/32 x 3/8 Slotted Truss Head	28	.25
8	50,512	8/32 Keps Nut	27	.25
9	50,511	8/32 Fogg McLean Nut	36	.25
10	30,077	Pull Bar Knob	21	1.10
11	6125	Pull Bar	10	2.70
12	6702	Mech. Plate	1	11.50
13	50,232	8/32 x 3/8 Slotted Flat Head	2	.25
14	50,238	8/32 x 3/8 Slotted Round Head	17	.25
15	50,231	8/32 x 3/8 Slotted Oval Head	5	.25
16	50,222	8/32 x 5/16 Slotted Flat Head	1	.25
17	50,271	8/32 x 1 Slotted Pan Head	5	.25
18	50,521	10/32 Fogg McLean Nut	4	.25
19	50,257	8/32 x 3/4 Slotted Round Head	2	.25
20	5523	Price Change Control	1	4.25
21	50,236	8/32 x 3/8 Socket Head	21	.25
22	50,344	10/32 x 1 Slotted Round Head	1	.25
23	10112	Rear Pull Bar	11	3.75
24	5422	Price Change Bar Extention	1	2.00
25	5107	Pull Bar Guide	10	1.00
26	6608	Coin Deflector	1	1.00
27	6604	Delivery Pan Bracket	2	1.00
28	10205	Pack Retainer Ass'y. (front)	1	4.10
29	50,725	1/8 x 3/4 Roll Pin	21	.25
30	5094	Rocker Arm Anti Cheat	1	4.00

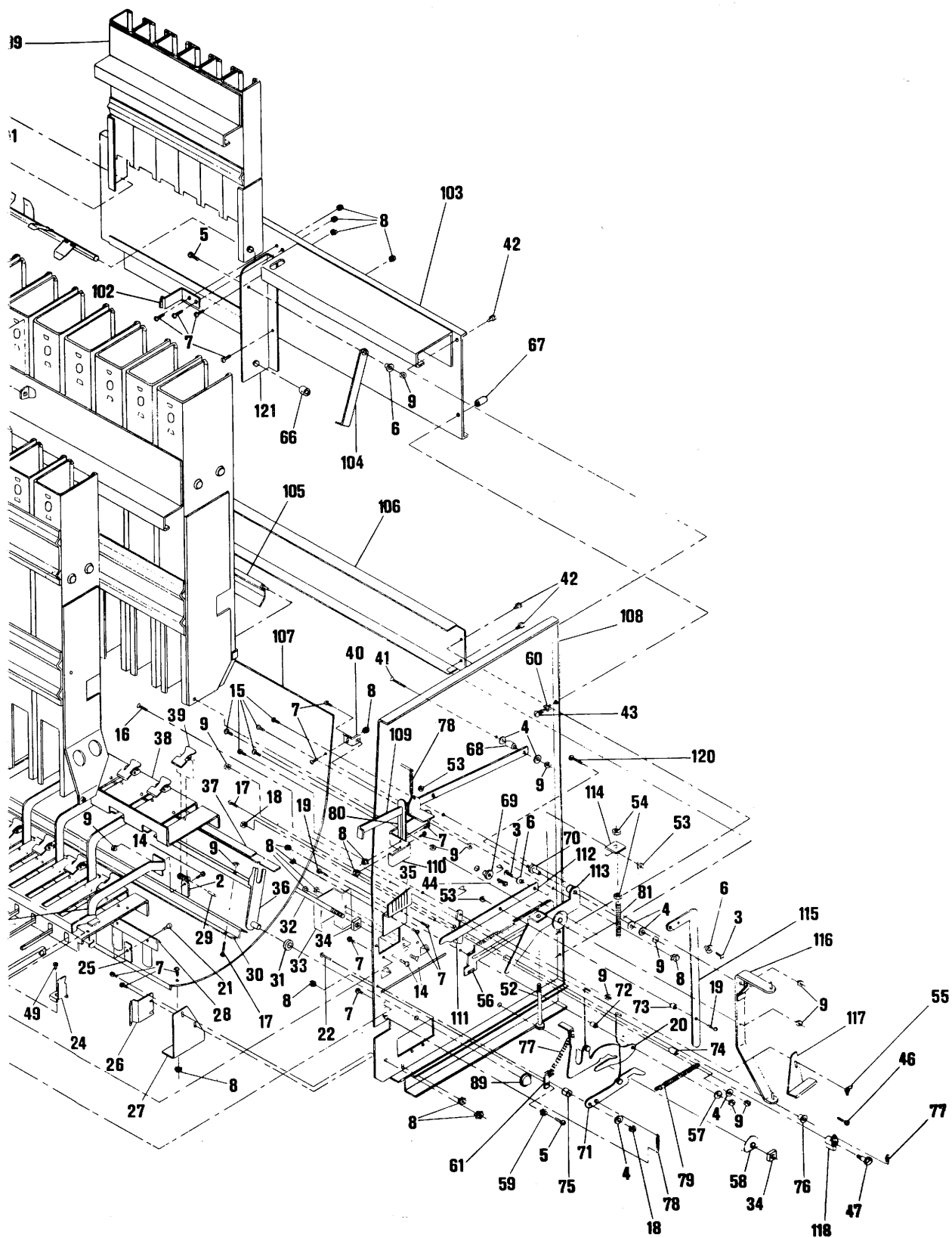
MECHANISM

Fig. and Index No.	Part No.	Description	Quantity	Price Ea.
31	30049	Rocker Arm Bushing	2	1.00
32	30088	Tie Rod	1	2.25
33	5660-2	Rejector Stationary Bracket	1	1.00
34	50,544	3/8 - 16 Square Nut	4	.25
35	5408-2	Wire Guide	1	2.25
36	10198	Rocker Arm Bar Ass'y	1	4.50
37	10225	Control Bar Assem.	1	4.50
38	5121	Back Mech. Plate	1	8.40
39	5087	Die Cast Pusher	21	1.25
40	4950	Pan Bracket	2	1.05
41	50,294	8/32 x 1 1/2 Slotted Flat Head	1	.25
42	50,434	No. 14 x 3/8 Hex Head type "B" Sheet Metal	6	.25
43	50,361	1/4-20 x 1/2 Slotted Round Head	2	.25
44	50,319	10/32 x 3/8 Slotted Fillister Head Case Hardened In Oil	2	.25
45	5105	Pull Bar Extention	11	2.75
46	50,252	8/32 x 5/8 Slotted Flat Head	1	.25
47	30038	Ratchet Pawl Stud	1	1.00
48	50,336	10/32 x 7/8 Flat Head Socket Head Cap Screw	2	.25
49	50,316	10/32 x 1/4 Slotted Fillister Head Case Hardened in Oil	2-23	.25
50	50,326	10/32 x 1/2 Slotted Fillister Head with Internal Shakeproof Wash.	2	.25
51	50,223	8/32 x 5/16 Slotted Pan Head	12	.25
52	50,386	1/4-20 x 3 1/4 Hex Head	1	.25
53	50,509	8/32 Stover Lock Nut	2	.25
54	50,534	1/4-20 Fogg McLean Nut	2	.25
55	50,514	8/32 Wing Nut	1	.25
56	10206	Sliding Ratchet Ass'y.	1	6.50
57	50,609	1/2 O. Dx .167 I.D. X .050 Steel Washer	1	.25
58	5148	Tie Washer	2	.25
59	50,585	No. 8 External Shakeproof Lock Washer	3	.25
60	50,593	1/4 External Shakeproof Lock Washer	2	.25

Fig. and Index No.	Part No.	Description	Quantity
61	5442	Rocker Arm Spring Bracket	1
62	50,584	No. 8 Internal Shakeproof Lock Washer	2
63	50,601	3/8 Wrought Washer	1
64	5112	Index Wheel (Match Dispenser)	1
65	30050	Stack Holding Arm Bushing	2
66	30036	Match Dispenser Collar	1
67	30035	Tie Down Spacer	2
68	30080	New Spring Assembly Spacer	1
69	30032	Bushing for Rear Stack Hinge	2
70	30002	Reset Inner Bushing	1
71	5426	Control Bar Latch	1
72	30008	Price Change Control Bushing	1
73	30015	Nudger Cam Hinge Bushing	1
74	30079	New Spring Assembly Spacer	2
75	30007	Control Bar Latch Bushing	1
76	30037	Ratchet Slide Bushing	1
77	21021	Coin Shelf and Ratchet Pawl Spring	2
78	21020	Price Change Bar and Scavenger Arm Spring	3
79	21014	Control Bar Spring	2
80	5412	Reject Arm Guide	1
81	21028	S.C.S. Rejector Reset Spring	1
82	21024	Index Wheel Nudger Spring	1
83	5891	Price Bar Spacer	1
84	5161-2	Price Change Return Arm	1
85	5222-2	Price Change Spacer	1
86	5817	Price Change Return Spring Bracket	1
87	5165	Price Change Finger	0-21
88	5450	Price Change Bar	1
89	50566	Cap-Type Push-On	2
90	5101	Nudger Bar For Index Wheel	1

Fig. and Index No.	Part No.	Description	Quantity
91	5102	Match Dispenser Control Arm	1
92	5111-2	Back Lash Control (Match Dispenser)	1
93	50,627	1/16 x 1/2 Steel Cotter	1
94	5145	Left End Plate	1
95	5106	Front Stack Slide Stop	2
96	5126	Stack Latch Ass'y.	2
97	100199	Front Stack Ass'y.	1
98	100200	Back Stack Ass'y.	1
99	100201	Match Stack Assembly	1
100	5104	Match Dispenser Rod	1
101	5115	Match Dispenser Paddle	6
102	5113	Match Stack Latch	1
103	100202	Top Back Brace Ass'y.	1
104	5895	Match Stack Hanger	1
105	100116	Pack Deflector Ass'y. (Back Stack)	1
106	5099	Bottom Back Brace	1
107	6589	Delivery Pan	1
108	5444	Right End Plate	1
109	100123	Reject Arm Ass'y.	1
110	4694-2	Rejector Stop	1
111	6717	Reset Lever Guide	1
112	6714-2	Rejector Reset Lever Ass'y.	1
113	100203	Reset Cam Ass'y.	1
114	6716	Reset Lever Angle	1
115	5409	Vertical Rejector Lnk	1
116	100204	Rejector Bracket Ass'y.	1
117	5437-2	Wire Retainer	1
118	6483	Ratchet Pawl	1
119	5179	Price Change Bar Bracket	1
120	50,286	8/32 x 1 1/4 Slotted Round Head	1
121	5088	Match Dispenser Bracket Support	1
122	100089	Anti Cheat Channel Ass'y.	1



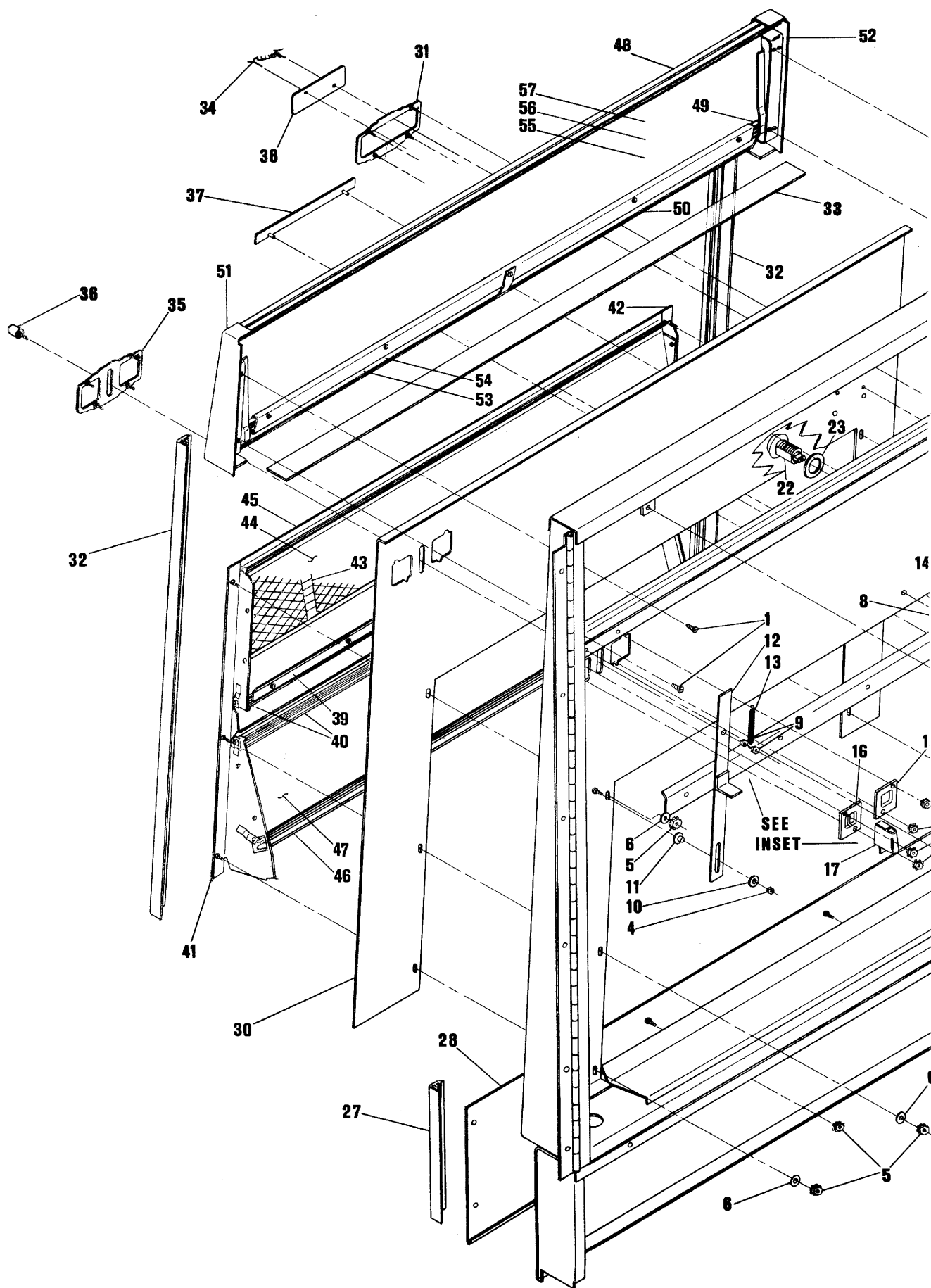


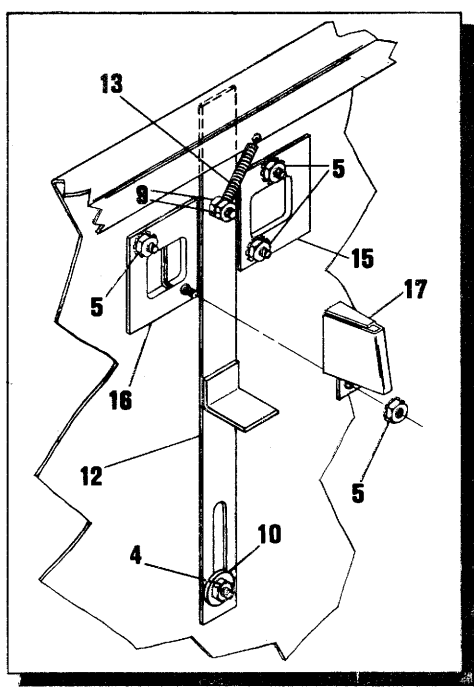
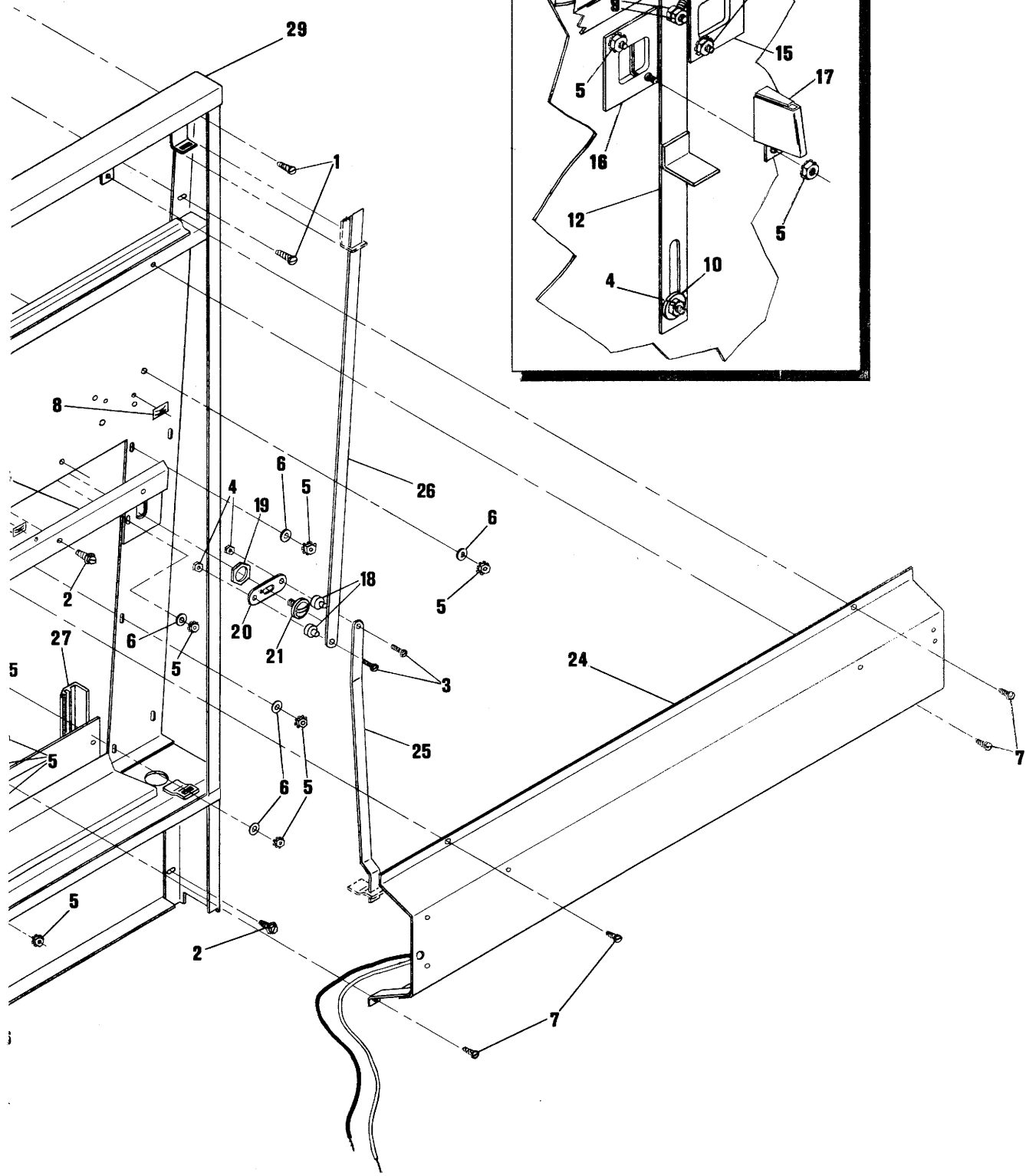
DOOR

Fig. and Index No.	Part No.	Description	Quantity	Price Ea.
1	50,410	No. 7 x 1/4 Pan Head Slotted Type "AV" S.M.S.	4	\$.25
2	50,426	No. 10 x 1/4 Ind. Hex Head Slotted Type "B" S.M.S.	15	.25
3	50,258	8/32 x 3/4 Pan Head Slit. M/S	2	.25
4	50,511	8/32 Fogg McLean Nut	3	.25
5	50,512	8/32 Keps Nut	17	.25
6	50,594	Watkins Washer	11	.25
7	50,422	No. 8 x 3/8 Pan Head Slotted Type "A" S.M.S.	4	.25
8	50,563	Tinnerman Push On C610-014	4	.25
9	50,521	10/32 Fogg McLean Nut	2	.25
10	50,616	9/16 O.D. and .192 I.D. x .050	1	.25
11	30,053	Shoulder Bushing	1	1.00
12	10046	Coin Rejector Slide Ass'y.	1	2.75
13	21015	Coin Reject Slide Spring	1	1.00
14	6577	Retainer Strip	1	2.25
15	25135	Price Window	1	1.00
16	25138	Coin Window	1	1.00
17	10048	Coin Guide Ass'y.	1	2.50
18	30015	Nudger Cam Hinge Bushing	2	1.00
19	1803-HN 16-2	Nut	1	.25
20	1803-HN 16-2	Cam	1	1.00
21	1803-HN 16-2	Bolt	1	.25
22	1803-HN 16-2	Barrel	1	2.00
23	1803-HN 16-2	Washer	1	.25
24	10045	Light Ass'y.	1	18.00
25	6637	Lower Locking Bar	1	2.75
26	6614	Upper Locking Bar	1	3.00
27	20189	Door Trim (Lower Door)	2	2.00
28	10077	Base Door Front Ass'y.	1	7.50
29	10039	Door Frame and Base Door Ass'y.	1	35.00

DOOR

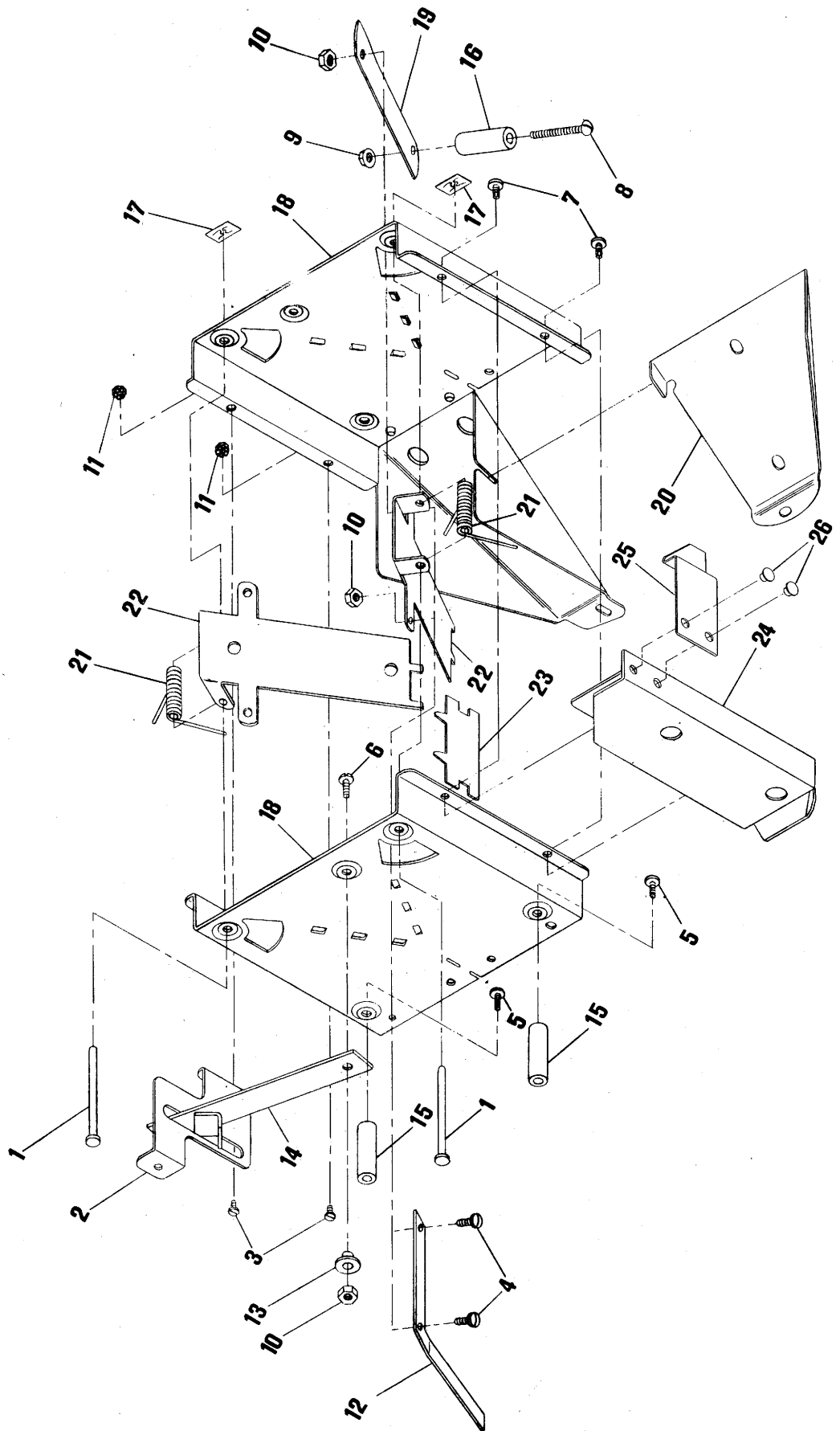
Fig. and Index No.	Part No.	Description	Quantity	Price Ea.
30	6613	Front Panel (Clad REx)	1	10.50
31	10026	Logo Panel Trim Ass'y.	1	2.50
32	20190	Door Trim	2	3.50
33	25134	Machine Front Diffuser	1	2.75
34	20302	Fawn Logo	1	3.50
35	10022	Coin Insert Plate Ass'y.	1	3.50
36	30026	Coin Reject Knob	1	1.20
37	20314	Fleetwood Logotype	1	3.10
38	6504	Logo Plate	1	1.25
39	6577	Retainer Strip	1	2.25
40	20191	Pull Bar Molding No. 1	2	2.75
41	10003R	Extrusion Holder Ass'y.	1	6.25
42	10003L	Extrusion Holder Ass'y.	1	6.25
43	6563	Window Panel	1	5.50
44	25127	Display Window	1	6.25
45	20192	Top Display Molding	1	3.25
46	20193	Bottom Display Molding	1	2.95
47	6561	Lower Front Panel	1	6.00
48	20194	Top Picture Molding	1	3.75
49	20196	Middle Picture Molding	1	3.75
50	20195	Bottom Picture Molding	1	3.75
51	10013R	Picture End Ass'y.	1	9.50
52	10013L	Picture End Ass'y.	1	9.50
53	25131	Name Window	1	2.75
54	25137	Small Cigarette Photo	1	3.50
55	25132	Picture Diffuser	1	2.50
56	25136	Large Cigarette Photo	1	7.50
57	25130	Picture Window	1	5.50
58	10051	Cabinet	1	105.00
59	10040	Door Complete	1	118.00





ESCROW BOX

Fig. and Index No.	Part No.	Description	Quantity
1	30,107	Escrow Flapper Pin	2
2	5427	Anti-Cheat Guide	1
3	50,109	6/32 x 1/4 Slotted Pan Head	2
4	50,235	8/32 x 3/8 Slotted Pan Head	2
5	50,221	8/32 x 5/16 Slotted Binding Head	2
6	50,244	8/32 x 1/2 Slotted Truss Head	1
7	50,104	6/32 x 1/4 Slotted Pan Head Type 23 Self Thrd.	2
8	50,286	8/32 x 1 1/4 Slotted Round Head	1
9	50,509	8/32 Stover Lock Nut	1
10	50,511	8/32 Fogg McLean Nut	3
11	50,501	6/32 Keps Nut	2
12	5993	Flapper Control	1
13	30053	Sholder Bushing	1
14	100207	Escrow Reject Arm Ass'y.	1
15	30006	Escrow Stud	2
16	30150	Escrow Spring Weight	1
17	50561	C 1059-014-27	2
18	5606-2	Escrow Shell	2
19	21029	Escrow Spring	1
20	5432-2	S.C.S. Coin Return Pocket	1
21	21019	Escrow Flapper Spring	2
22	5407-2	Escrow Flapper	2
23	5430	Escrow Coin Divider	1
24	100208	Overflow Channel Ass'y.	1
25	21036	Latch	1
26	50706	1/8 x 3/32 Brass Tubular Rivet	2



PARTS ORDER BLANK

When ordering be sure to give the serial number of the machine and model as well as indicate the size and type. See plate attached to back or side of cabinet. Minimum parts order \$1.00 - C.O.D. - F.O.B. Factory. If part is covered and in warranty, upon receipt of part at plant, it will be examined for defects in material or workmanship. A refund will then be made if part is found defective and in warranty. NOTE: All parts orders must be accompanied by check or order will be sent COD. Refunds will be made on receipt of any warranty defective parts only.

MODEL	SERIAL NO.	PART NO.	QUANTITY	PRICE EA.

CHECK ENCLOSED \$ _____

NAME _____

ADDRESS _____

CITY _____ STATE _____ ZIP CODE _____

MAKE CHECKS PAYABLE TO: FAWN SALES INC.
P. O. BOX 1333
8400 University Blvd.
DES MOINES, IOWA 50303

