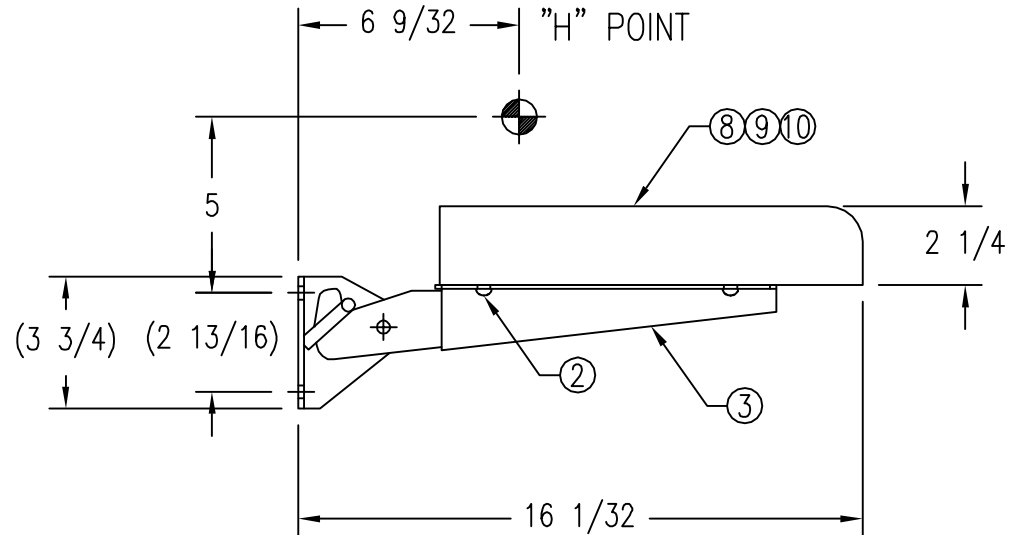
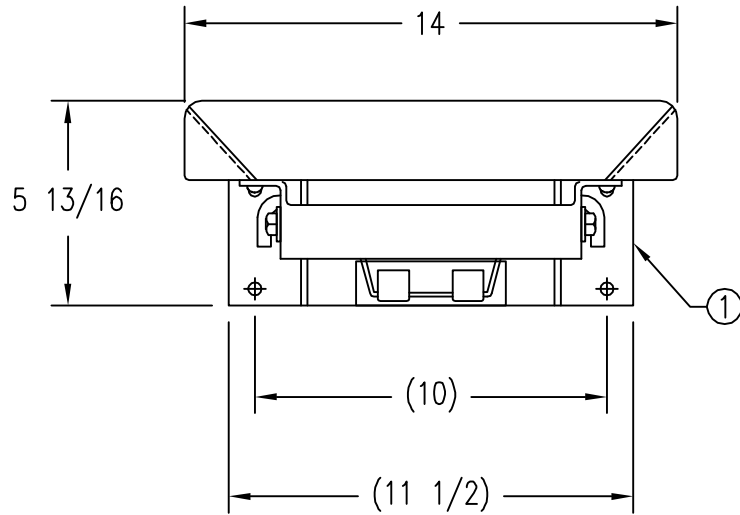
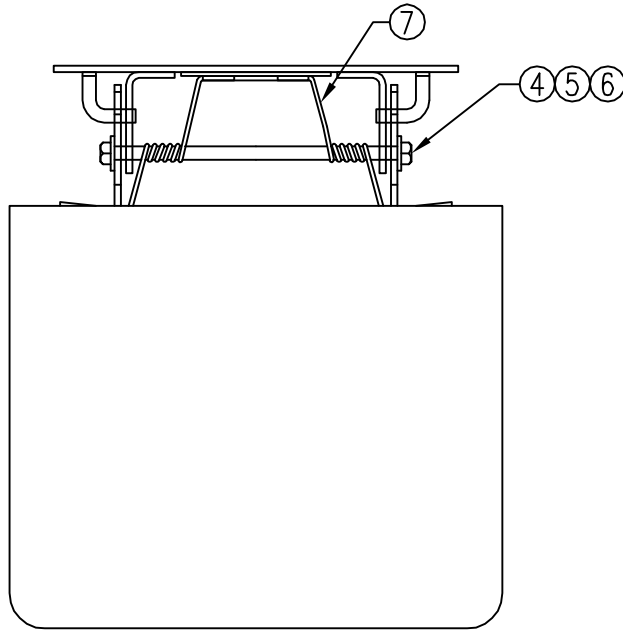


12337

NOT TO BE USED, DISCLOSED OR REPRODUCED WITHOUT PERMISSION.  
PROPERTY OF THE FREEDMAN SEATING COMPANY.



ITEM	QTY	PART #	DESCRIPTION
1	1	12324	WELDMNT, MOUNTING PLATE
2	4	99105	1/4-20 x 3/4 MACHINE SCREW, PHILLIPS RND HD, ZP
3	1	12318	WELDMNT, SEAT PAN, FLIPSEAT
4	1	9413534	3/8 x 16 CENTER LOCKNUT, ZP
5	2	120394	3/8 FLATWASHER, SAE, ZP
6	1	99073	3/8-16 x 8 1/2 HEX HEAD CAP SCREW, GR 5 ZP
7	1	17033	STEEL DOUBLE TORSION SPRING
(E) 8	1	57112380	FOAM, REBOND, JUMP-NARROW, SEAT
9	1	12316	ASSY, SEAT, JUMPER, MINI, NARROW
(E) 10	1	1000-58	COVER

NOTE(S): 1) LINEAR TOLERANCES ARE ±1/4 UNLESS OTHERWISE SPECIFIED.  
2) DUE TO UPHOLSTERY CHARACTERISTICS DIMENSIONS CAN VARY ON CUSHIONS.  
3) TORQUE ITEM 2 (PART 99105) TO 9-12 Ft-Lbs.

				D	ITEM 4 WAS 9413447	CL	07/02	2795	Tolerances Unless Otherwise Specified	Material:	Freedman Seating Co.	4545 W. Augusta Blvd Chicago, IL 60651			
				C	P/N WAS TRANSPOSED AS 21337	CL	05/02	2687							
				B	DRAWN IN CAD	BH	01/02	2549	FRACTION 1/X ±1/32"	Specifications:	Part Name ASSY, JUMPER, WALLMOUNT, MINI, NARROW				
				A	RELEASED TO PRODUCTION	HG	12/87	DECIMAL .XX ±0.02" .XXX ±0.005"							
Rev. Level	Description of Change	By	Date	ECN #	Rev. Level	Description of Change	By	Date	ECN #	ANGULAR ±1"	Drawn by: BH	Date: 01/28/02	DO NOT SCALE DRAWING	Drawing No. 12337	Rev. E