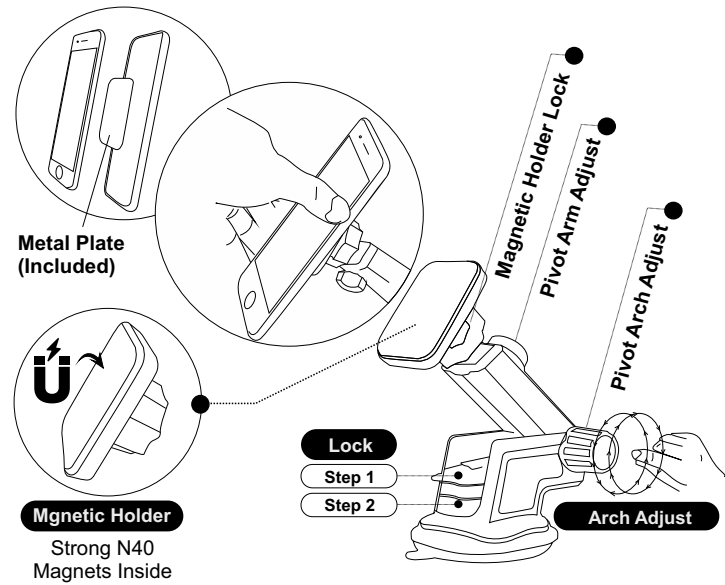
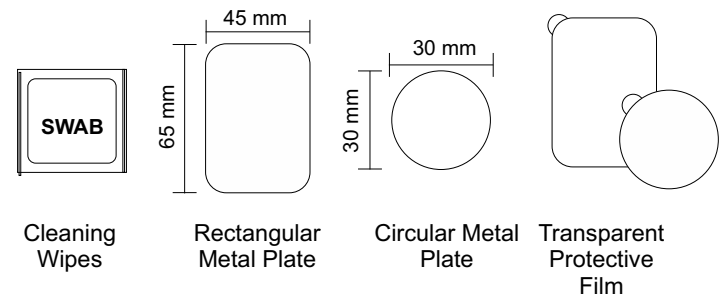


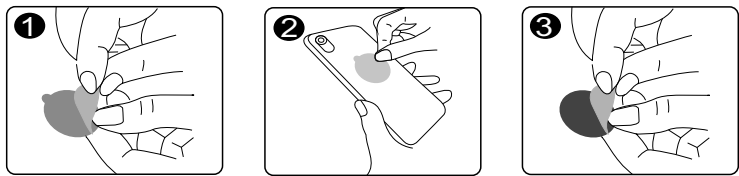
# Magbear Magnetic Car Mount Holder User Guide



## Product Accessories



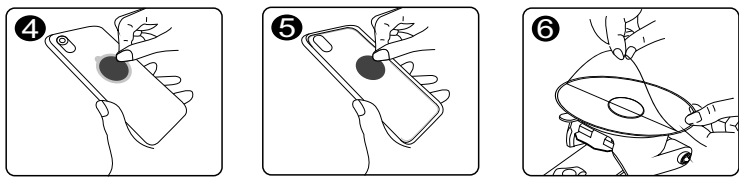
## Installation Steps



**1** Remove the White Transparent film.

**2** Apply the clear film to the back of your phone.

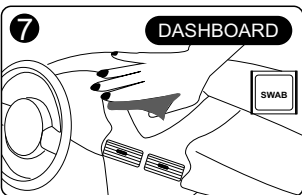
**3** Remove the white sticker from the metal plates.



**4** Paste the plate at the back of your phone cover.

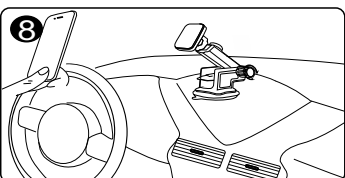
**5** (Or) Install it inside your phone cover.

**6** Remove the strip from the bottom of the suction cup.

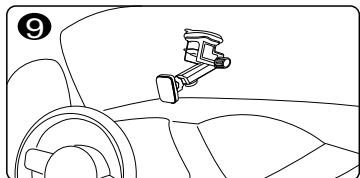


Use the Alcohol Swab to clean any Oils, Polish, Dust Particles from the dashboard surface.

**Note :** Clean it properly for best & long lasting results.

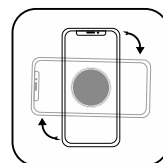


**USE (DASHBOARD)**  
Let the surface dry & fix the holder at your suitable angle. Apply pressure for hard grip.

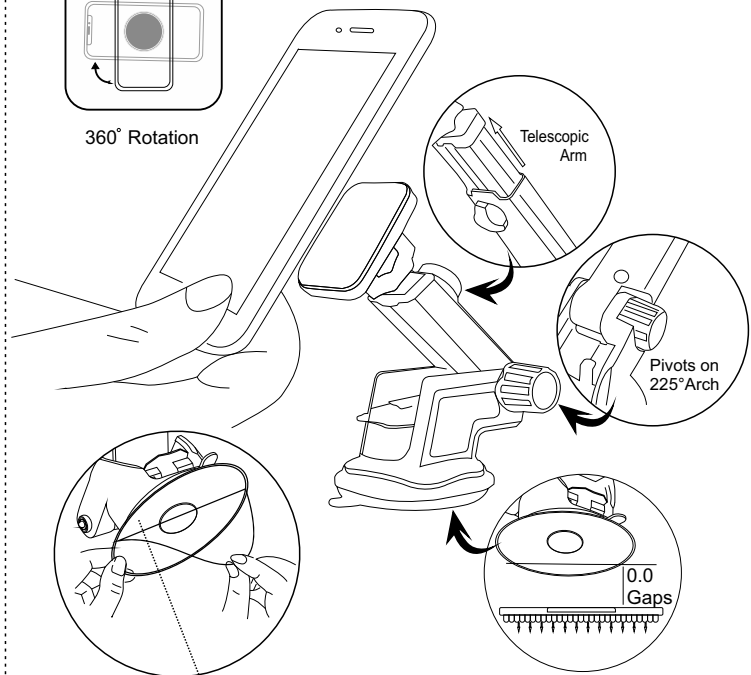


**USE (WINDSHIELD)**  
Wait for 30 mins after fixing. Tap your phone on top of the holder and you are ready to go.

## How to use the square metal plate?



360° Rotation



Suction cup Stick-on Dashboard (sticky gel)

**Avoid Air Gaps**