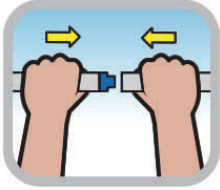


Shake-a-Vac II™

INSTRUCTIONS & USAGE TIPS

Self-Starting Spa Vacuum & Drain Siphon

SpaDepot.com



Step 1

Remove components from carton. Assemble the two clear rigid sections of the Shake-a-Vac II wand by pushing the blue connector firmly all of the way into the other rigid tube section, using a twisting motion. Once connected, do not separate for storage. NOTE: May be permanently connected with standard PVC pipe cement, if desired.



Step 2

Place the end of the flexible discharge hose in a bucket, or on the ground. For proper siphon action, the hose end should be as low as possible. Make sure there are no kinks in the flexible discharge hose (see Tips below).



Step 3

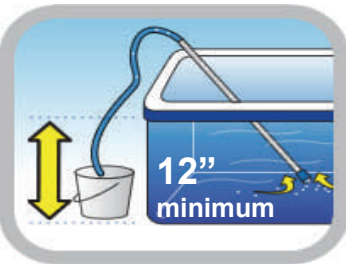
Place wand in water as deeply as possible. Shake it up and down using a series of quick vigorous strokes until the siphon begins, while keeping vacuum tip submerged. After a few seconds, repeat this action to purge remaining air out of the drain hose and assure a strong water flow.



Step 4

Vacuum up debris or drain water using the suction created by the siphon. Keep vac tip submerged to avoid losing the siphon. When finished, hold wand with vacuum tip facing upward to drain the Shake-a-Vac II.

Usage Tips & Troubleshooting



(a) Water flow is too slow:

- Increase water flow by vigorously shaking the vac up and down a few more times after the siphon initially starts. This helps purge remaining air from the flexible hose. Refer to (c) below.

(b) Siphon will not start:

- Like all siphons, Shake-a-Vac II uses gravity, so your hot tub or pool must be above ground level for it to function. For best results, make sure that the end of the flexible hose is at least 12" below the level of the water surface. The lower the better.

(c) Siphon stops:

- Position the wand at an angle to avoid hose kinking, which can restrict or stop water flow. Stubborn kinks (from storage) are easily relaxed by soaking hose in the warm spa water for 15 minutes to make it more pliable, then laying the hose out straight for a few minutes to cool at room temperature.
- End of drain hose must be lower than water level.
- Purge air from flexible hose. Refer to (a) above.
- Remove large debris or hair clogs from the blue vacuum tip.

