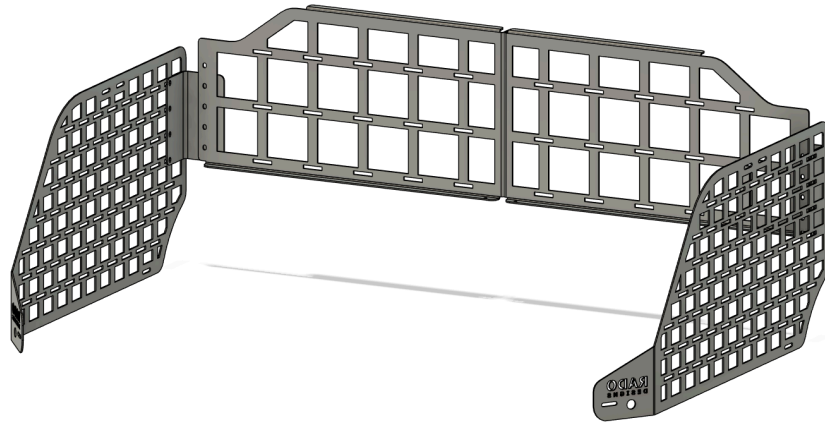


4Runner Dog Barrier Instructions

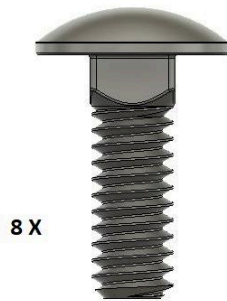


Tools Required

- Socket Wrench
- 7/16 Socket
- 5/32 Allen Wrench

Included Hardware

- Hardware Pack A
- Hardware Pack B
- Hardware Pack C



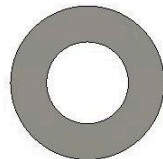
8 X

1/4" - 20 x 5/8"
Carriage Bolt



12 X

1/4" - 20 x 5/8"
Button Head Bolt



24 X

1/4" Flat Washer

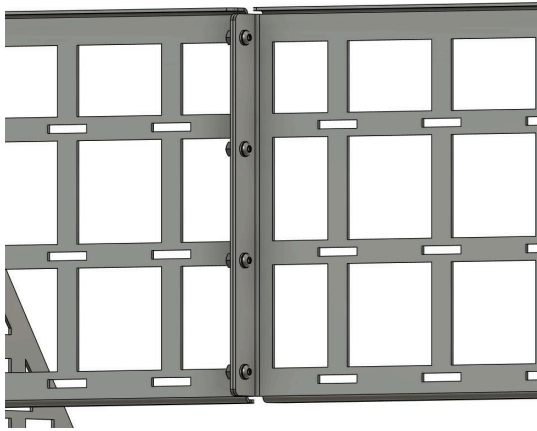


20 X

1/4"- 20
Nylock Nut

DISCLAIMER: By purchasing or installing this/these product(s), you agree to be bound by the following terms and conditions: Product is intended for off-road use only. The seller and or Rado Designs, LLC cannot be held liable for damage to the vehicle or injuries sustained as a result of installation or use. The purchaser accepts full liability for any and all property damage and any and all injuries that may occur during installation or use. Any modification of your vehicle can result in hazardous situations which may result in property damage or bodily harm. The purchaser of this product assumes all risks, including but not limited to personal injury, property damage, and legal consequences arising from installation or use. This product has **NOT** been crash tested. Please take caution when installing and mounting panel(s). Make sure all items are securely fastened. Recommend not to exceed 10 lbs per side.

Step 1: Using **hardware Pack A**, align and bolt together both of the middle panels on the center flange.

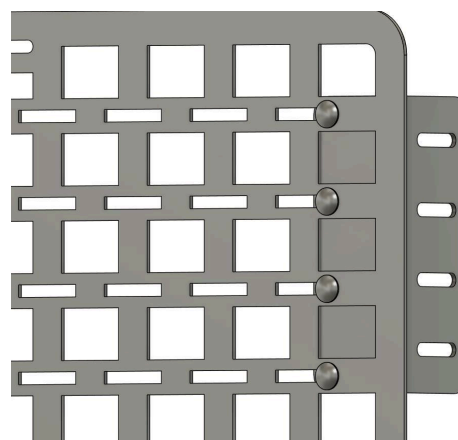


Step 2: Determine what height you want to mount the dog barrier. After determining this, go ahead and mount the side brackets. We recommend the position shown for the best fit. Using **hardware Pack B**. Loosely mount the side brackets to the molle panels. Make sure the longer slots on the bracket are pointing towards the center of the vehicle.

(Passenger side molle panel and bracket shown for reference)

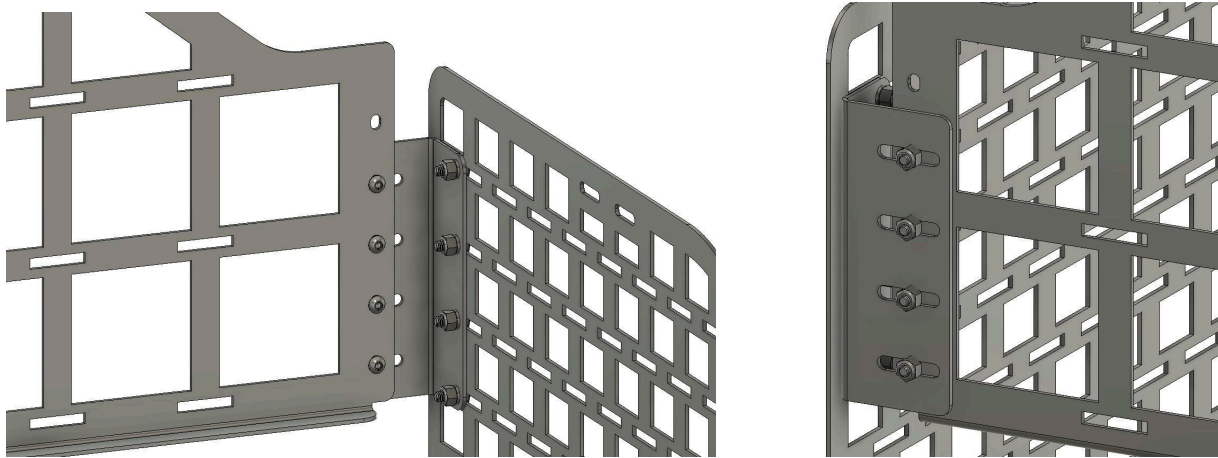


(Front Side of Molle Panel)



(Rear Side of Molle Panel)

Step 3: Using **hardware Pack C**. Hold up the middle section and begin bolting it to the side brackets. There is some adjustability built in to help align and center the middle panels between the side molle panels.



Step 4: Once everything is fully aligned and in the desired location, tighten everything down completely.

