

# PUROTAP<sup>®</sup> mini

New design for this tried and tested wall mounted unit.

With replaceable cartridge for the demineralisation of system water.



simple  
fast  
reliable

SWKI BT 102-01  
VDI 2035  
ÖNORM H 5195-1

New design for this tried and tested wall mounted unit. For the demineralisation of top-up water in larger heating and cooling systems. With integral combined meter. No power connection required. The wall mounted unit contains a PUROTAP<sup>®</sup> 1000 disposable cartridge which can be replaced.

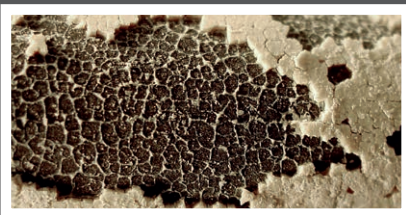
## Standards for heating water

According to current VDI and SWKI standards, fill water for heating systems should be pretreated to prevent the formation of mineral deposits. Practical experience has shown that even water with a low hardness level can produce limescale deposits that may damage modern appliances such as wall mounted gas boilers, heat pumps and solar thermal systems. The larger the system's water content (e.g. cylinders), the more limescale introduced by the fill water. Water with a hardness of 17 °dH (30 °fH) produces 300 grams of limescale for each cubic metre of water. For a system in a single family home with 350 litres of water, this results in approx. 100 grams, more than enough to disable a modern high performance heat exchanger.

### Potential consequences of non-demineralised tap water in water-filled systems:



Sludge



Scaling



Pitting, corrosion

# Why treated water for technical purposes?

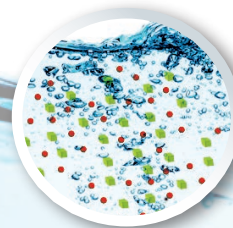
## Water circuits need demineralised water

Water-filled systems, such as heating and cooling systems, power plants, industrial installations and ship engines, place high demands on water quality. Tap water contains minerals, salts and gases that lead to deposits of sludge, limescale and rust in water-filled systems. Tap water must be filtered until it is suitable for the desired technological application. In terms of its chemical and physical properties, technical water must comply with the technical standards established by manufacturers, engineers and professional associations.

### The main benefits of demineralised water

- greater energy efficiency
- reduced maintenance costs
- allows for guarantee claims and consumer protection

Tap water: enriched with minerals and gases



Pure treated water for technical purposes after filtration through mixing bed ion resin



***Demineralised water is stipulated for filling heating systems by leading boiler manufacturers and by the Swiss Society of Building Technology Engineers.***

Easy and assured compliance with the following standards: SWKI BT 102-01, VDI 2035 Part 2, ÖNORM H 5195-1

## PUROTAP® mini – new design for this wall mounted unit

Wall mounted unit with replaceable PUROTAP® 1000 cartridge for simple and reliable demineralisation of system water in larger heating and cooling systems.



Important note: the cartridge must not be permanently subject to pressure. For permanent connections, we recommend the PUROTAP® compenso range.

# Specifications and dimensions

**PUROTAP® mini** (incl. PUROTAP® 1000 cartridge)

Capacity	15 m <sup>3</sup> at 1 °fH 8.5 m <sup>3</sup> at 1 °dH
Operating pressure	4 bar temporarily
Throughput	10 l / min
Water temperature	max. 60 °C temporarily

## Combined meter

Professional and reliable measuring of the electrical conductivity of heating water. The PUROTAP® combined meter takes precise measurements for reliable system filling. Measures conductivity, throughput and flow rate in litres. Programmable limit. Resettable water meter. Battery operated.

## Recommended limit

50 µS / 33 TDS; replace the resin above these levels.

## Replacement cartridge

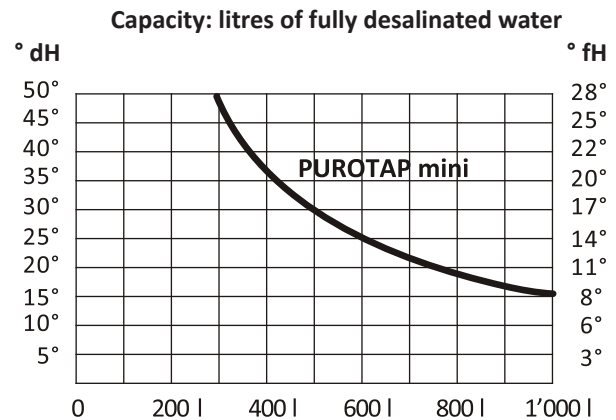
Once the limit has been reached, replace the cartridge with a new PUROTAP® 1000 disposable cartridge.

The front section of the two-part casing is easy to remove when you need to insert a new PUROTAP® 1000 disposable cartridge.

## GOOD REASONS

- ☑ Straightforward installation
- ☑ Replaceable cartridge
- ☑ Integrated metering
- ☑ Complies with current standards (consumer protection)

## Capacity



The above table shows the capacity of a full desalination cartridge as a function of the total hardness of the fill water.

Example: at a hardness level of 20 °fH / 11 °dH, PUROTAP® mini with the PUROTAP® 1000 disposable cartridge provides approximately 750 litres of full desalinated water.

## Replacement cartridge

PUROTAP® 1000 disposable cartridge



PUROTAP® mini comprises a wall mounting bracket with hose bracket for the 4 metre long hose with 3/4" adaptors and mounting screws.

