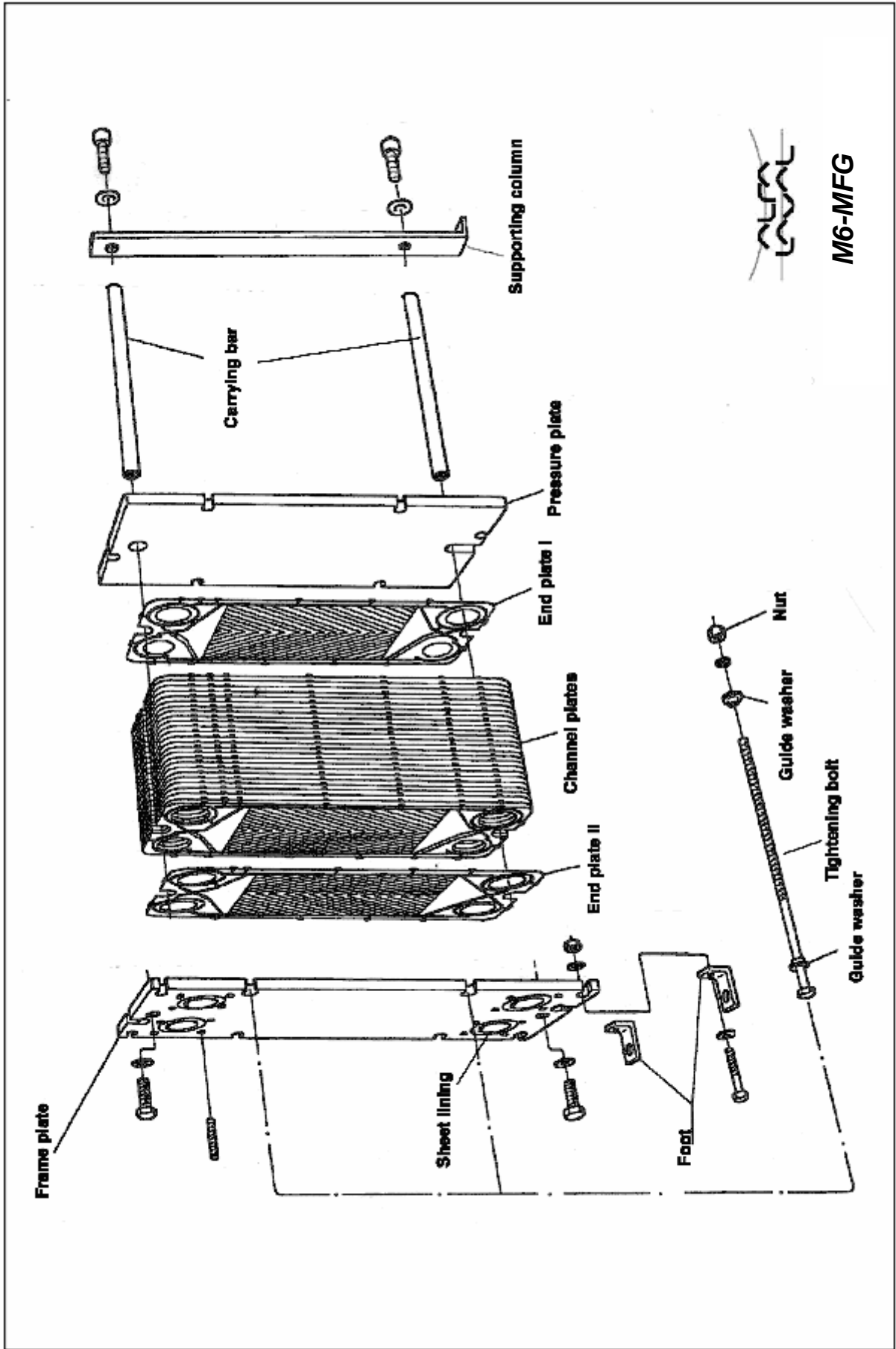


PARTS LIST



Unit type: **M6-MFG**

Block	Block description	Item no	Item description	Qty
364117 4503	CHANNEL PLATE	364117 4503	CHANNEL PLATE	17
		364117 4003	METALLIC COMPLETE PLATE	17
		39005614 26	Field Gasket	17
364217 0576	END PLATE I	364217 0076	METALLIC COMPLETE PLATE	1
		39005614 26	Field Gasket	1
		364217 0576	END PLATE I	1
364217 0583	END PLATE II	32330 1422 26	End Plate Gasket	1
		364217 0003	METALLIC COMPLETE PLATE	1
		364217 0583	END PLATE II	1
M6 FG BA131	L=350, STRAIGHT CARRYING BAR.	34505935 01	L=350	2
M6 FG CF328	CONNECTION FRAME PL.	1625125 01	NUT	4
		1625246 01	ISO-G, SS, THICK (EUROHEAT)	4
M6 FG FO01	FOOT, CS	32323 0069 1	FOOT	2
M6 FG FP215	PIPE CONNECTION, FLAME CUT CON	223101 52	BRB 21 X 37 - 8,8	2
		260001 41	ISO 4017 - M20 X 55 - 8.8	2
		34505235 01	M6-FG,ALS	1
M6 FG IN07	INSULATION	32363 0100 2	INSULATION KIT	1
M6 FG NP103	ENGLISH, SS/PLASTIC	1629003 01	English	1
		1643835 02	"ALFA LAVAL", PLASTIC	1
		66169	DRIVE SCREW	4
M6 FG PP228	UNHOLED	34505858 01	M6-FG, UNHOLED, ALS	1
M6 FG SC01	SUPPORTING COLUMN	223101 52	BRB 21 X 37 - 8,8	2
		260001 01	ISO 4017 - M20 X 40 - 8.8	2
		34505940 01	M6 SUPPORTING COLUMN CS	1
M6 FG TB199	M20, L=200	1624362 01	GUIDE WASHER	2
		1995 101 096	M20,1203-38	2
		223101 52	BRB 21 X 37 - 8,8	6
		3350005003	LOCK WASHER	6
		3350026836	M6M,M20	6
		3350027183	M20,L=200,Forged	6
		3350027971	M20	4
M6 FG YP101	BOX	3350020577	Side,L=350	1
		3350020583	Lid,L=1	1
		3350020586	Pallet, lying,L=1	1
M6 MFG FX103	FIXED ITEMS	2210462 29	ISO 4014 - M16 X 65 - 8.8	2
		221803 34	NUT	2
		3490010216	INSTRUCTION MANUAL	1
		70490	BRB 17 X 30 - 8,8	4



M6-MFG

ALFA LAVAL ORDER NO.	K18-54430-10		
CUSTOMER / REF.	BSS Group Plc-Leicester HQ / 1240/R97799		
NO. OF UNITS: 1			
PERFORMANCE OF ONE UNIT			
MEDIA	SIDE 1	SIDE 2	
Water-Steam	Water	Water	
FLOW RATE	0 kg/s	3 kg/s	
TEMP.	133 °C	→ 131 °C	10 °C → 65 °C
PRESSURE DROP	15.2 kPa	13.6 kPa	
LIQUID VOL.	4.03 l	4.03 l	
INLET	S1	S3	
OUTLET	S2	S4	
F.D.G.	2	2	
CONSTRUCTION OF ONE UNIT			
DESIGNTEMP MAX/MIN	150 °C / 0 °C	150 °C / 0 °C	
DESIGNMIN/TEST PRESS	7 bar / 0 bar / 9.1 bar	7 bar / 0 bar / 9.1 bar	
PLATE GROUPING	1°9L/1°9L		
NETWEIGHT	140 kg	WEIGHT WITH WATER	148 kg
AREA OF HEAT SURFACE	2.4 m²		
12	NUT		
11	BLIND COVER		
10	NUT		
9	INSPECTION COVER		
8	STUD BOLT		
7	CONNECTION		
6	PLATES		
5	GASKET		
4	TIGHTENING NUT		
3	TIGHTENING BOLT		
2	PRESSURE PLATE		
1	FRAME PLATE		
NO	QTY	PART NAME	MATERIAL
CERT.			

PLATE HEAT EXCHANGER	
M6-MFG	
PED	
REF.	DATE
703512	2018-07-27
SERIAL NUMBER	REV
30110-36704	0

FOUNDATION LOADS

745 N V

1194 N V

REMARKS:
HEAT LOAD 767 kW
ALL DIMENSIONS IN MILLIMETERS

FRAME PLATE (FIXED)

PRESSURE PLATE (MOVABLE)
SECTION A-A

THREADED PIPE
S5
S1, S2, S3, S4

HOLES Ø28 FOR M20 OR M24 FOUNDATION BOLTS

RISK CATEGORY Article 4.3

PREPARED 703512 LUND_SEI

CUSTOMER / REF. BSS Group Plc-Leicester HQ / 1240/R97799

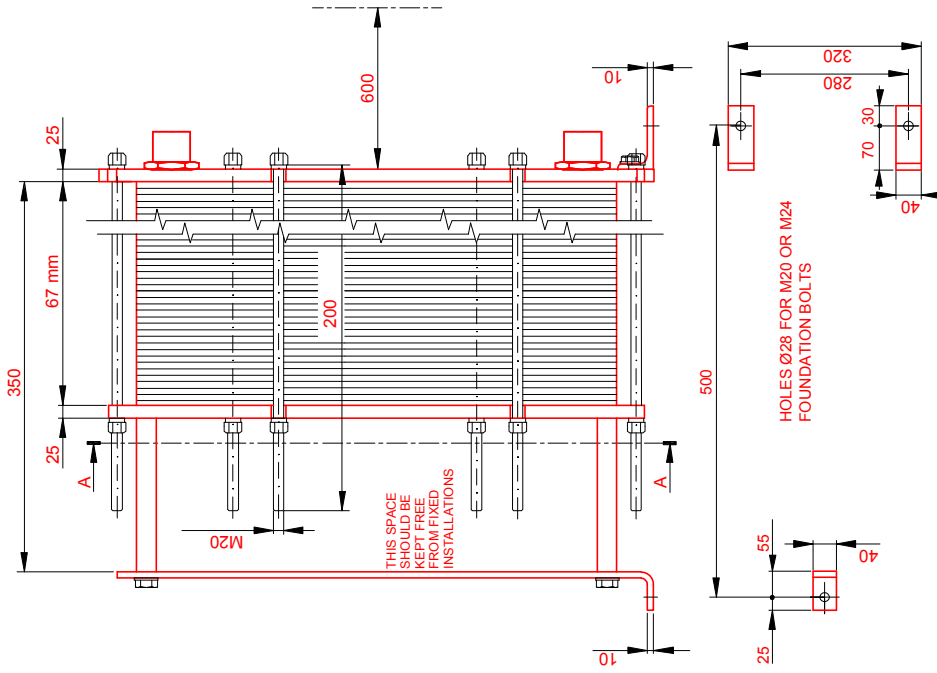
AGENT / REF. / 2082572

Do not use this drawing for foundation bolting or piping layout.

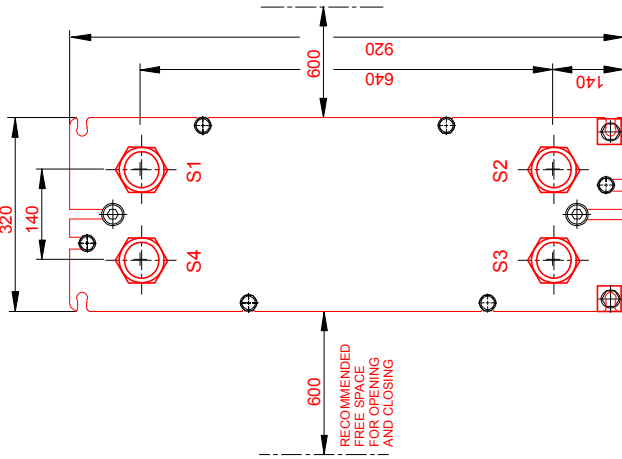
FOUNDATION LOADS

1194 N
V

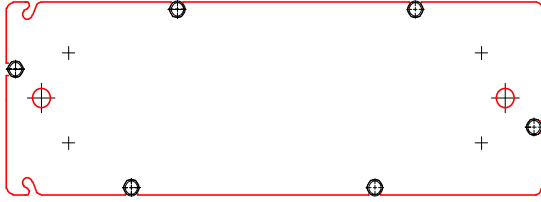
745 N
V



FRAME PLATE
(FIXED)



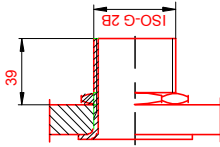
PRESSURE PLATE
(MOVABLE)
SECTION A-A



REMARKS:

	SIDE 1	SIDE 2		
TEST PRESSURE	9,1 bar	9,1 bar	HEAT LOAD	767 kW
DESIGN PRESSURE	7 bar	7 bar	GASKET	EPDMFF Clip-on
MIN DESIGN PRESSURE	0 bar	0 bar	PLATE MATERIAL	ALLOY 316
MAX TEMPERATURE	150 °C	150 °C	PLATE THICKNESS	0.5 mm
MIN TEMPERATURE	0 °C	0 °C	HEATING SURFACE	2.4 m²
NETWEIGHT	140 kg		PLATE GROUPING	1*9L/1*9L
			WEIGHT WITH WATER	148 kg

THREADED PIPE
SS
S1,S2,S3,S4



ALL DIMENSIONS IN MILLIMETERS

TOTAL LENGTH	555
TOTAL WIDTH	320
TOTAL HEIGHT	920

PRESSURE DROP	LIQUID VOL.
15.2 kPa	4,03 l
13.6 kPa	4,03 l

OUTLET	TEMP.	FLOW RATE
S2	131 °C	0 kg/s
S4	65 °C	3 kg/s

F.D.G.	INLET	TEMP.
2	S1	133 °C
2	S3	10 °C

SIDE	MEDIA
1	Water-Steam
2	Water

SUPPLIER LUND_SEI	REF. K18-54430-10	ITEM NO.
AGENT / REF. 2082572		
CUSTOMER NAME / REF. NO. BSS Group Plc-Leicester HQ / 1240/R97799		
SIGN. 703512	RISK CATEGORY Article 4.3	

PLATE HEAT EXCHANGER

M6-MFG

PED



SERIAL NUMBER
30110-36704

DATE
2018-07-27

REV
NO. 0