

Operating instructions PUROTAP® trolley

Function Operation Maintenance

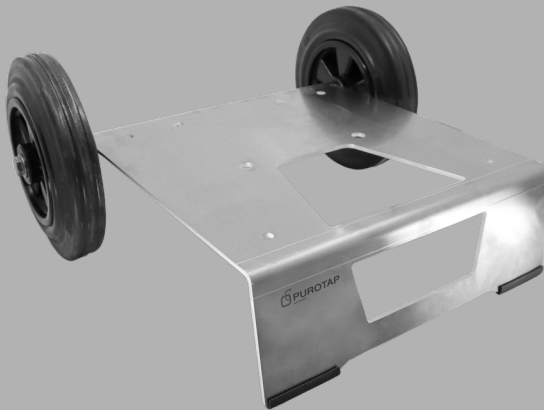


Table of contents

1. Safety instructions	4
2. Function	4
3. Standard delivery	4
4. Specification	
4.1. Device description	5
4.2. Dimensions	5
5. Installation	
5.1. Wheels	6
5.2. "PUROTAP® leader" tank	6
5.3. U-profile	7
6. Operation	8
7. Spare parts	8

1. Safety instructions

**max.
50 kg**

Max. 50 kg load bearing capacity

2. Function

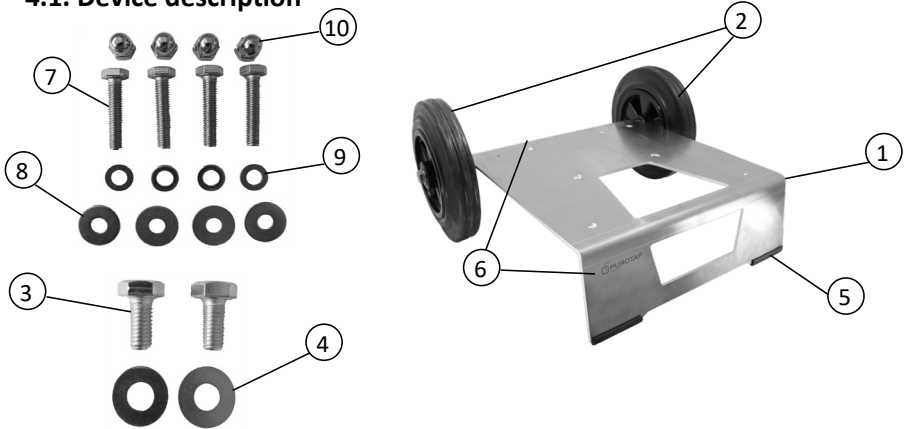
The PUROTAP® trolley can be installed on the PUROTAP® leader as a mobile base. This makes it easy to cover distances and even steps, without unnecessary heavy lifting.

3. Standard delivery

- PUROTAP® sheet aluminium trolley
- 2 × solid synthetic rubber wheels Ø 200 mm
- 2 × hexagon screws M10 × 20
- 2 × washers M10
- 1 × U-profile (l = 120 mm)
- 2 × PUROTAP® labels (small and large)
- 4 × hexagon screws M6 × 30
- 4 × large washers M6
- 4 × small washers M6
- 4 × cap nuts M6
- Operating instructions

4. Specification

4.1. Device description



- 1 PUROTAP® sheet aluminium trolley
- 2 Synthetic wheels
- 3 Hexagon screws M10 × 20
- 4 Washers M10
- 5 U-profile (l = 120 mm)
- 6 PUROTAP® labels
- 7 Hexagon screws M6 × 30
- 8 Large washers M6
- 9 Small washers M6
- 10 Cap nuts M6

4.2. Dimensions

Dimensions	PUROTAP® trolley
Dimensions	490 × 440 × 200 mm
Max. load	50 kg

5. Installation

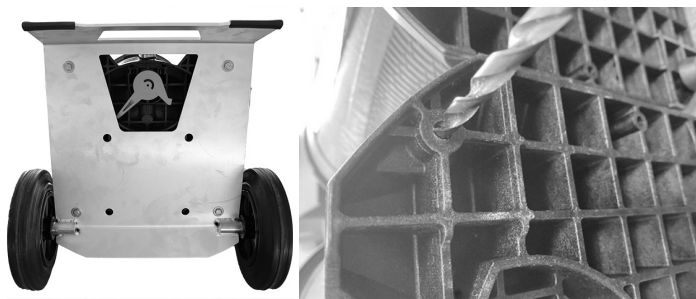
5.1. Wheels

Secure the wheels (2) using the screws M10x20 (3) and washers (4).

CAUTION! Max. tightening torque 37 Nm. Threadlocking adhesive (e.g. Loctite 243) may also be used, if required.

5.2. "PUROTAP® leader" tank

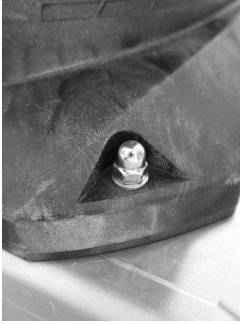
Remove the 4 rubber feet from the PUROTAP® leader (the screws and rubber feet are no longer required).



Drill out the 4 holes to $\varnothing 7$ mm.

Now insert the 4 hexagon screws (7) with the large washers (8) through the PUROTAP® trolley and the PUROTAP® leader from underneath.

CAUTION! The PUROTAP® leader drain must be positioned in the PUROTAP® trolley opening, otherwise it can no longer be used!



Place the 4 small washers (9) on the screws, fit the 4 cap nuts M6 (10) on the ends of the screws and tighten.

CAUTION! Max. tightening torque 8 Nm

5.3. U-profile

Cut the U-profile (5) into two equal length pieces (approx. 60 mm). Slide the two pieces onto the aluminium sheet to prevent it touching the floor directly.



6. Operation

The PUROTAP® leader can now be pulled by the head using the handles.

PLEASE NOTE! The head of the PUROTAP® leader can also be rotated 90° to make it easier to pull.

CAUTION! The PUROTAP® trolley must not be subjected to a load in excess of 50 kg.

7. Spare parts

Item no.	Designation
101 314	Solid synthetic rubber wheel