

Dear Customer:

Thank you for choosing the Huiye Rotating Chandelier Lift for your home or business. Below are common questions and tutorials. Please make sure to read the safety instructions in the manual first before proceeding with this guidance.

**Professional Installation:** The Huiye Rotating Chandelier Lift must be installed by a qualified electrician/contractor. Please do not attempt to install it yourself.

**Tools Required:** The electrician/contractor should have experience using an impact drill and scaffolding, as these tools will be required during the installation process.

**Contact Information:**

**Email:** [info@huiyelight.com](mailto:info@huiyelight.com)/[huiyelight@gmail.com](mailto:huiyelight@gmail.com)

**Phone number/Whatsapp:** (+86)13808557280



**If you got any problem about installation or usage, Scan The QR Code to Contact Us!**

**Company website:** [www.huiyelightlift.com](http://www.huiyelightlift.com)

**Before installing on the ceiling**, please let the electrician/contractor conduct a wiring and power-on test for the chandelier lift on the ground to test whether its 3 functions can work normally. Note that you should pull the load-bearing lock hook with your arm throughout the test, because the lift cannot operate with no load. The test video is in the product link and the Youtube below.

After testing and confirming that the three functions of rising, falling, and rotating



(Tutorial Videos)  
For after-sales service use only

can work normally, you can proceed with the installation. Otherwise, please contact us.

On the left is a video we produced on YouTube. You can scan to enter our video homepage and watch our installation and wiring tutorials. If there are any parts you don't understand, feel free to ask me via email, or on WhatsApp. We will do our best to assist you.

# Installation Steps:

First, mount the hook to the head of the lift using two inner hex bolts, **making sure not to press the hook onto the black wires** as this may cause the machine to malfunction.(Pay attention to label warnings on the machine)

Then affix the mounting hole layout diagram at the reserved location for the lifting mechanism in advance. Select one mounting hole from each of the two corners, using a total of four holes.

**If it is a concrete ceiling:** Use an impact drill to make holes at the selected positions, insert the expansion bolts into the drilled holes, then place washers onto the expansion bolts followed by nuts. Tighten the nuts with a wrench to secure the expansion bolts firmly to the floor's concrete slab.

Afterward, remove the washers and nuts, align the lifting mechanism with the four holes, and proceed to install it. Subsequently, fit the washers and spring washers in place and tighten the nuts to complete the installation.

## **For Wooden Ceiling with Joists (Less than 16-inch Spacing)**

**Determine Joist Spacing:** Ensure that the joist spacing is 16 inches or less. If the spacing is more than 16 inches (such as 24 inches), contact a contractor to build an additional base(Figure-1) for installation. Depends on the Scenario.

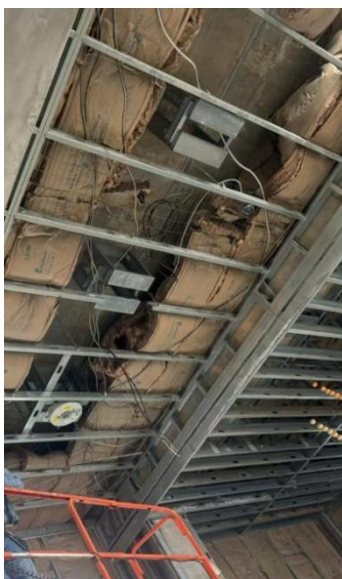


Figure-1



Figure-2



Figure-3

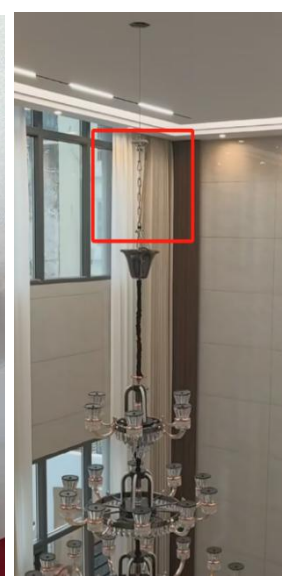


Figure-4

**Position and Secure the Steel Bars:** Once you confirm the joist spacing is 16 inches, and you purchased the version designed for ceiling joists with a 16" spacing, you will get two 19.7-inch long steel bars. Place one steel bar vertically across the ceiling joists and secure it using screws. **The detailed instruction is in another package.**

**Mount the Chandelier Lift:** Attach the chandelier lift to the first steel bar using screws, washers, and nuts. Then, position the second bar based on the lift's other mounting holes, and secure it in place to complete the installation (Figure-2).

**If your ceiling is sloped,** you will need to hire a contractor or handyman to build a flat surface using wooden boards, so that the lift can operate parallel to the ground, as shown in the image(Figure-3)

Note: If there is a significant gap between your lift and the ceiling (drywall) below, preventing the chandelier from reaching the ceiling, you can use a steel chain to connect to the gear underneath the lift. The length of the chain should be adjusted based on the actual situation, as shown in the picture(Figure-4).

**For Concrete Ceiling, XZ-250KG requires the installation of 8 expansion bolts**

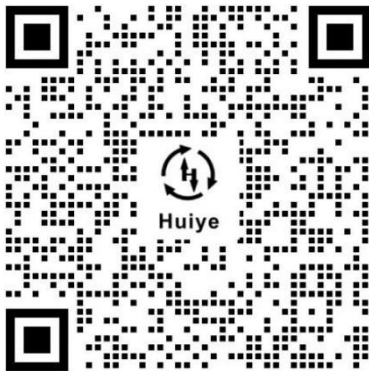
**Remember not to start the machine without load(At least 18lbs); otherwise, the machine will self-lock for protection. Then, it will not be able to power on and function.**

**After completing the installation, it's time for the wiring part.**

To power the hoist: Connect the live wire (L) and neutral wire (N) from the input power supply (AC110/220) to the corresponding terminals in the hoist's junction box one by one. With this, the hoist is powered.

**There are two wiring methods for the chandelier:**

**First one:** The chandelier and hoist share the same circuit **(recommended)** With this method, when the chandelier is powered, the hoist is also powered.



On the left is the wiring tutorial video we produced on YouTube. If there are any parts you don't understand, feel free to ask me via email, or on WhatsApp. We will do our best to assist you.

**Wiring steps:** After powering the hoist as described above, first connect the L1 and L2 of the chandelier's power source in series using a wire. Then connect the live wire (L) and neutral wire (N) from the hoist's junction box to either L1 or L2 (whichever is chosen) and the neutral wire (N) of the chandelier's power source respectively. Now, the conductive plate beneath the hoist is powered.

**P.S:**The reason why we need to connect the wiring ports of the chandelier in series with small wires is that the junction box of the chandelier will conduct electricity to the wiring ports of the gears below the chandelier lift, with one port corresponding to one port. Generally, when connecting the chandelier to the gear wiring, only one live wire and one neutral wire are used. If two live wires are required, small wires need to be used in series to ensure that the live wire at the gear wiring port is definitely powered. If only one live wire port is needed, small wires in series may not be necessary, but it is important to remember whether the connected live wire is L1 or L2.

When you have connected the side lift terminal to the chandelier power terminal, **there is no need to connect any wires from any terminal to the gear under the lift**. This is because the gear under the lift and the chandelier power terminal are already connected internally. When the chandelier power terminal is energized, the gear below will be automatically energized. At this point, you only need to connect the chandelier to the zero fire line terminal of the gear.

Next, connect the chandelier's power wires to the connection holes on the hoist's conductive plate(gear), matching the live wires (L1, L2) with each other and the neutral wire (N) with itself. If the chandelier has a low power rating, only connect it to L1; if it has a higher power rating with multiple live wires, divide them into two groups according to actual needs and connect them to L1 and L2 respectively.

**Important:** If it's an LED chandelier, the voltage typically requires 12v instead of 110v. This necessitates connecting the transformer to the chandelier lift and then to the chandelier. In this scenario, if there is no suspended(Dropped) ceiling to embed the transformer, you cannot place the transformer inside the decorative cover; instead, it must be positioned below the conductive plate and connected to the chandelier. Our recommended practice is to drill a hole through the lift cable on the transformer and secure the transformer underneath the lift.

**Second one:** With this method, when the chandelier is powered, the hoist is not powered. It requires separate activation.

**Wiring steps:** After powering the hoist as described above, connect the live wire (L) and neutral wire (N) from the input power supply (AC110/220/220V) to the chandelier's power source. Now, the conductive plate beneath the hoist is powered.

Then connect the chandelier's power wires to the connection holes on the hoist's conductive plate, matching the live wires (L1, L2) with each other and the neutral wire (N) with itself. If the chandelier has a low power rating, only connect it to L1; if it has a higher power rating with multiple live wires, divide them into two groups according to actual needs and connect them to L1 and L2 respectively.

# FAQ During Use

**If the suspended weight drops without operation, you may need to restore normal function using the reset switch(On the surface of the lift):**

Measures: Press and hold the reset switch, press the up button until it reaches the top, then press the down button. (Be sure to press up to the bottom first)

**If the remote control is lost, please purchase a new remote control and perform the coding operation; if the remote control is misused and cannot normally control the machine, the remote control needs to be re-coded and then coded again:**

Clearing measures: Reconnect the power supply, a single beep indicates successful power delivery, press and hold both up and down buttons, one beep followed by five beeps indicates that the code clearing was successful. (Release after success)

Reading measures: (Ensure the power supply is connected) Press and hold both up and down buttons, two beeps indicate successful reading of the code. (Release after success)

**Since the factory setting for height is 10-15 ft, if a greater lifting height range is required, please reset the lifting height:**

Measure: Restart the power (hear a "beep" sound), press the up button to the top (even if the chandelier is already at the top), then press the set(head icon) button. After hearing a "beep", press the down button. When it reaches the desired position, press the set button again (Do not press the pause button). You will hear three "beeps", indicating that the height has been successfully set.

Subsequently, pressing the down button will automatically stop at the previously set ideal position without needing to press the pause button. (Do not press the pause button during the setting process)

**If it descends a little and then no longer descends but can still rise normally, it is likely that the set button (head key) was mistakenly pressed. The method is the same as above.**

**Please remember: Before starting the machine, make sure to hang a weight of more than 8KG.**

**Note:** If the lift has been lowered for more than 20 minutes, it will lock itself to prevent accidental operation by children. Please restart the power supply before using it again.