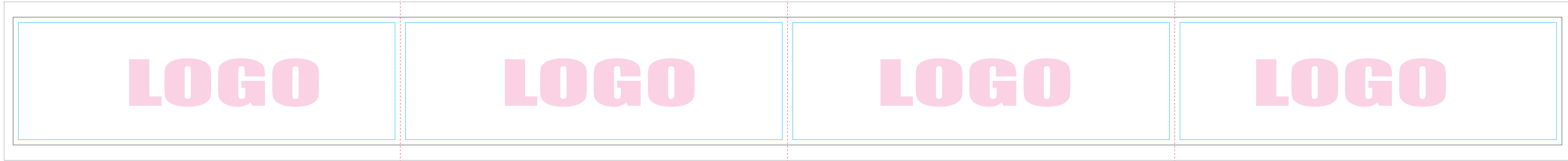


# 12ft Curved Square Hanging Structure



## Note to Designers:

- All graphic files must be built at [150 dpi](#) at the overall graphic layout size.
- All graphic file must be created using [CMYK](#) mode to ensure the best color matching. If you would like a specific color matched, you MUST provide a [PMS](#) color or we cannot guarantee color matching.
- It is best to [flatten](#) all images and outline all text to ensure that nothing will drop out or change during file transfer.
- Be aware of Safe [Viewable Zone](#) and [Guides](#) that may cut your important elements off. Using guidelines will keep margins on your radar and prevent mistakes.
- The "[Bleed Zone](#)" are hidden inside the hardware. However, it is STRONGLY recommended that you [extend](#) your background graphics to the edges of artboard to ensure proper bleed with no visible unprinted areas.

**Finished Size**  
**12' W x 24" H**

**File Format**  
PDF and TIF

This is 1/4 of the Square.  
It'll be printed 4 times.

*Plane Size*  
*120" W x 48" H*