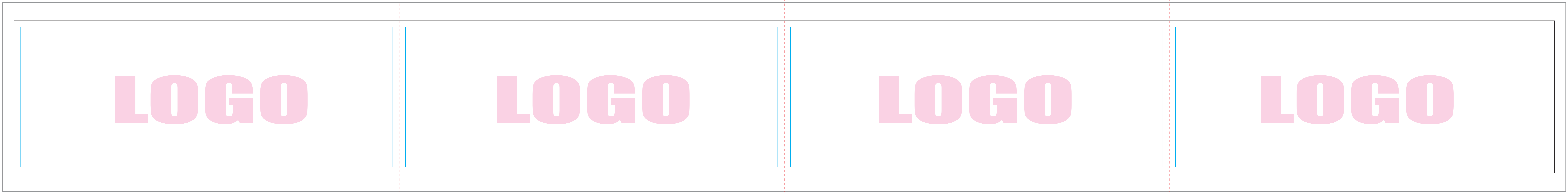


# 10ft Square Hanging Structures



## Note to Designers:

- All graphic files must be built at **150 dpi** at the overall graphic layout size.
- All graphic file must be created using **CMYK** mode to ensure the best color matching. If you would like a specific color matched, you **MUST** provide a **PMS** color or we cannot guarantee color matching.
- It is best to **flatten** all images and outline all text to ensure that nothing will drop out or change during file transfer.
- Be aware of Safe **Viewable Zone** and **Guides** that may cut your important elements off. Using guidelines will keep margins on your radar and prevent mistakes.
- The "**Bleed Zone**" are hidden inside the hardware. However, it is **STRONGLY** recommended that you **extend** your background graphics to the edges of artboard to ensure proper bleed with no visible unprinted areas.

**Finished Size**  
**10' W x 24" H**

**File Format:**  
PDF and TIF

This is 1/4 of the Square.  
It'll be printed 4 times.

*Plane Size*  
*120" W x 48" H*