

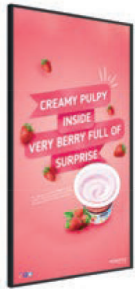
55" High Vibrance Android Advertising Display



Perfect for brightly-lit retail environments or as a budget friendly window display

700cd/m² Brightness

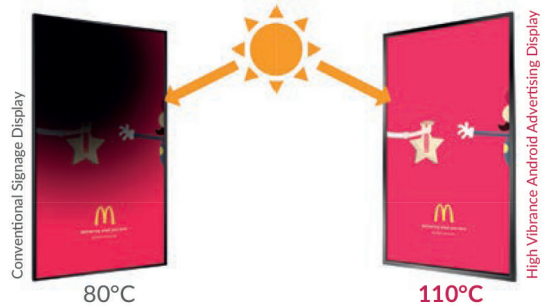
Designed for brightly lit spaces such as retail stores and shopping centres. More than twice the brightness level of a standard domestic screen or monitor to make your content really stand out from the crowd.



700cd/m²

Ultra Resistant to Blackening Defect (up to 110°C)

LCD panels exposed to direct sunlight suffer from temporary blackening defect. These displays use a special panel that can withstand surface temperatures up to 110°C with no blackening defect occurring.



Plug and Play

Plug and Play is the most straightforward way to upload content to the screen. Simply load images and videos on a USB stick, insert in the display, wait for your content to copy over and then remove. Your images and videos will now play in a continuous loop.



Narrow Bezel

These displays feature a slim border for applications where this is important, such as placing multiple screens side-by-side.



IPS Panel

Commercial grade IPS technology accurately displays image quality and colour depth with no fall-off in colour accuracy. These panels are designed to achieve ultimate lifelike colour temperature when used in either landscape or portrait.



24/7 Commercial Use

These displays use a commercial grade LCD panel and LED backlight. They have the ability to be in constant use 24/7 for over 70,000 hours and have no external buttons or controls to avoid tampering.



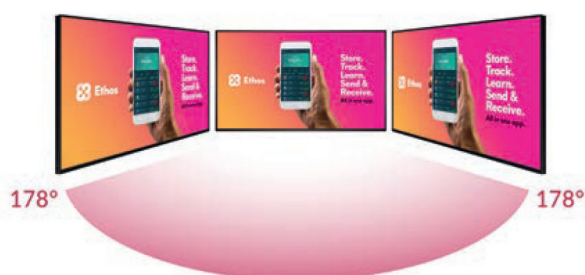
Free Scheduling Software

These displays come with free optional scheduling software for displaying different content at different times of the day. You can also display a “ticker tape” style scrolling text message along the bottom of the screen.



Wide Viewing Angle

Thanks to the IPS technology these displays provide fantastic image quality with a remarkable viewing angle of 178° in both landscape and portrait.



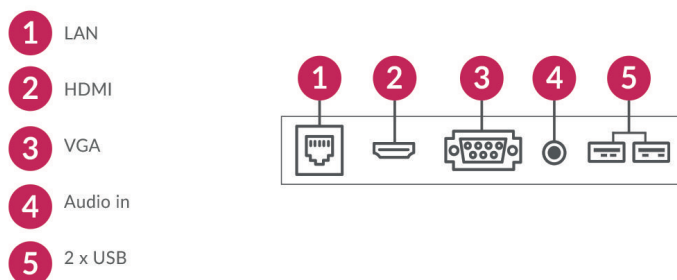
Slim and Lightweight Design

Using open cell panel manufacturing processes ensure the enclosure of these displays is super slim and lightweight. Making installation a breeze and improving space efficiency.



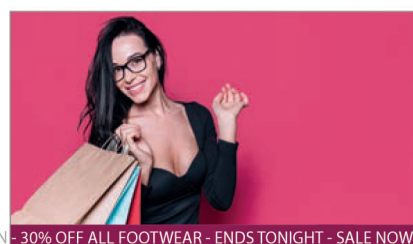
Multiple Inputs

Should you need to use the screen as a monitor you can connect it to an external source, like a PC or media player, using the HDMI input or the VGA and 3.5mm audio jack inputs.



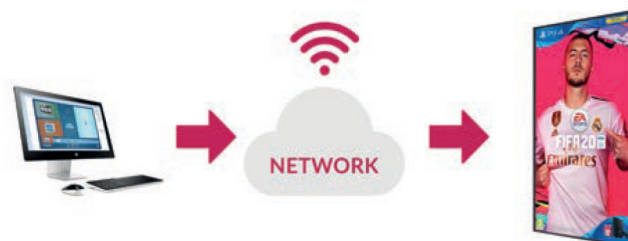
Scrolling Text

You can display a “ticker tape” style scrolling text message along the bottom of the screen, to help you get your message across or help highlight any specific promotions or offers.



Optional Network Upgrade

For a small charge you can upgrade your screen to be networked, allowing you to connect your screen via Wi-Fi, LAN or 4G, then remotely update it over the internet. For more information please go to page 115.





700CD/M² BRIGHTNESS



PLUG AND PLAY



INTEGRATED ANDROID
MEDIA PLAYER



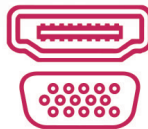
24/7 COMMERCIAL GRADE



LANDSCAPE OR PORTRAIT
ORIENTATION



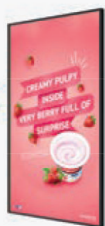
CONNECT DEVICES



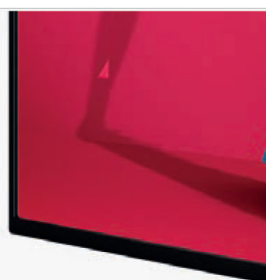
IPS PANEL

IPS

OPTIONAL NETWORK UPGRADE



HIGH VIBRANCE



NARROW BEZEL



INTEGRATED NETWORK
ANDROID MEDIA PLAYER



SLIM AND LIGHTWEIGHT
DESIGN

		55 Inch
Panel	Resolution	1920x1080
	Display Area (mm)	1209.6x680.4
	Bezel Size (mm)	Top/Left/Right: 11.2 Bottom: 17.3
	Aspect Ratio	16:9
	Brightness (cd/m ²)	700
	Colour	16.7M
	Viewing Angle	178°
	Contrast Ratio	4000:1
Audio	Speaker Type	5W, 8Ω (x2)
AV Inputs	Video	HDMI, VGA
	Audio	Audio Socket (3.5mm)
Power	Power Consumption (W)	65
	Input Voltage	AC110~240V (50Hz~60Hz)
Mechanical	Unit Size (WxHxD mm)	1232x708.9x49.9
	Package Size (WxHxD mm)	1360x830x190
	VESA Holes (mm)	400x200
	Net Weight (kg)	15.2
	Gross Weight (kg)	25
Environmental	Surface Panel Temperature	Up to 110°C (230°F)
	Operating Temperature	0°C to 50°C
	Storage Temperature	-30°C to 60°C
	Operating Humidity	10% to 80%
	Storage Humidity	5% to 95%
Computer	Media Formats	Video (MPG, AVI, MP4, RM, RMVB, TS), Audio (MP3, WMA), Image (JPG, GIF, BMP, PNG)
	Media Resolution	1920x1080/1080x1920
	CPU	Quad-Core ARM Cortex A17, 1.6GHz
	GPU	Quad-Core ARM Mali-T764
	RAM	DDR3 2GB
	ROM	8GB eMMC
	USB	1 x USB (OTG/HOST), 1 x USB (HOST)
	LAN	10/100M Ethernet (Network Version Only)
	Wi-Fi	802.11b/g/n/ac (Network Version Only)
	Bluetooth	Bluetooth 4.0
	OS	Android 7.1
	Graphic Engine	OpenGL ES 1.1/2.0/3.0/3.1, OpenCL 1.1, Renderscript, Direct3D 11.1
	Accessories	Included
Optional		Wall Mount, Floor Stand/Trolley, Ceiling Mount, Table Stand
Warranty	Warranty Period	3 Year Warranty
	Technical Support	Lifetime

Errors and omissions excepted



