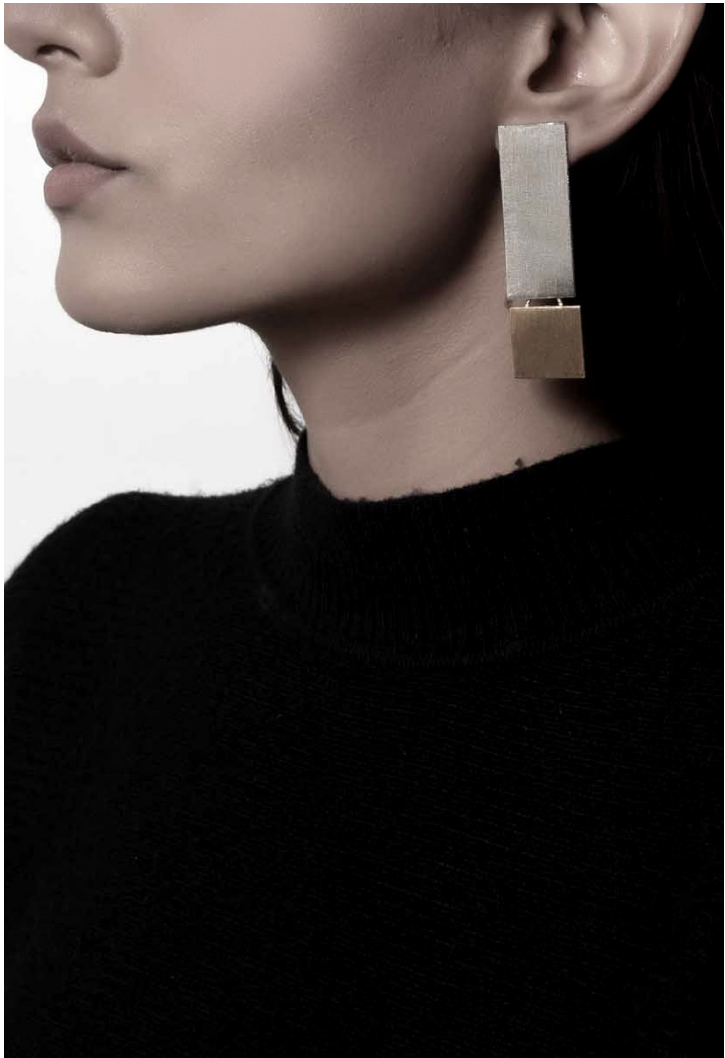




THE PERFECT MISFIT

DE'ANMA

“In a world of absolutes, everything is not what it seems to be. Perfection is beyond our common understanding and imperfection bedazzles us. What once seemed to be a couple of misfits, now seem to blend in perfectly in the tide of change and harmony.”



*“Hold yourself to a standard
of grace, not perfection.
Be imperfect, be yourself.”*



IMPERFECT PERFECTION

MT-E-08



*“Let’s make a beautiful paradox together, not
a boring counter statement.”*



PARADOX

MT-E-09



*“Why do men like intelligent women?
Because opposites attract.”*



OPPOSITES ATTRACT

MT-E-10





SIBLINGS

*"Siblings are as close as hands and feet.
So enjoy the mutuality of parentage with
yours."*

MT-E-11



*“The key to keeping your balance is
knowing when you’ve lost it.”*



OFF-BALANCE

MTE-12



*"She was an enigma of time, a
mystery in space, coveted to be
known, unknown to bequeath."*



VICE-VERSA

MTE-E-13



*"Just like divided realms stand united, protect
yourself against all odds using three lines
of defense."*



TRINITY

MT-E-14



*“Falling down is life. getting back up is
living if right from square one.”*



SQUARE TRINITY

MT-E-15



*"In this conflict of unity and duality, be
as dynamic as the whole offers you to
be, that is, an indivisible whole."*



YIN YANG

MT-E-16



*“Get up, button up and show up.
Look Impeccable.”*



BUTTON-UP

MT-E-20



*“Fortify your strengths, guard your dreams,
combine the twin capacities and ascend to be
among niche!”*



TWINNING TOWER

MT-N-02



*“Add your dualities, pair your polarities,
twinning is in trend, get your drift across
the seas.”*

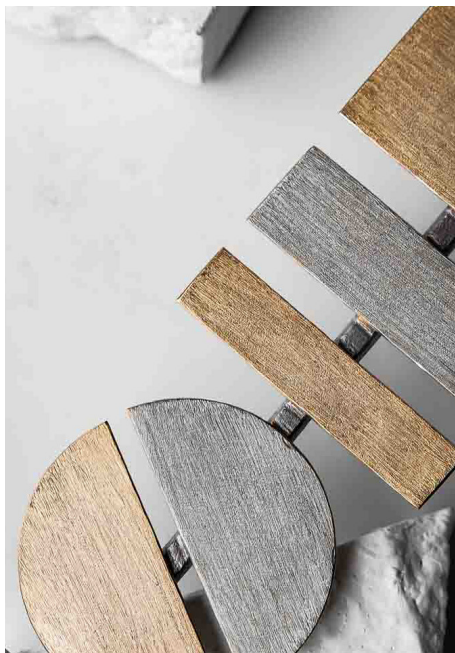


TWINNING MOON

MT-N-02A



*“Nothing shapes your life more than the
commitments you choose to make.
Count them accordingly.”*



ABACUS

MT-N-03





YIN

*“If her strength intimidates you, realize it’s
your weakness.”*

MT-R-01



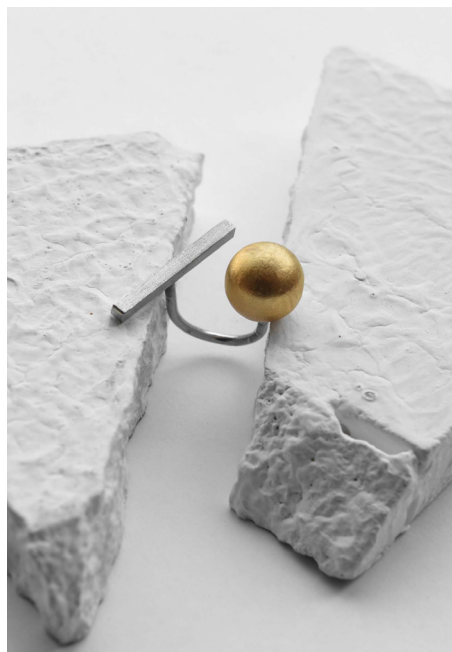
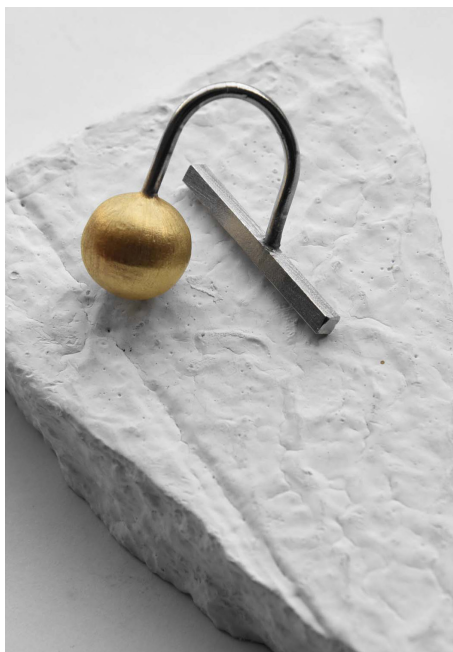
*“Pay attention to distractions.
Quads rule over lines.”*



OBLIQUE

MT-R-03





DOMAIN

*“Faced with a choice, do both.
Create your own domain.”*

MT-R-04





QUAD RULE

*“Pay attention to distractions.
Quads rule over lines.”*

MT-R-05



IMPERFECT PERFECTION

● ●
INR 3,500
MT-E-08



VICE-VERSA

● ●
INR 3,900
MT-E-13



PARADOX

● ●
INR 3,500
MT-E-09



TRINITY

● ●
INR 3,600
MT-E-14



OPPOSITES ATTRACT

● ●
INR 3,500
MT-E-10



SQUARE TRINITY

● ●
INR 3,600
MT-E-15



SIBLINGS

● ●
INR 2,800
MT-E-11



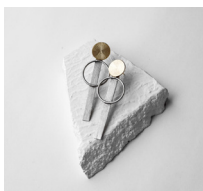
YIN YANG

● ●
INR 3,300
MT-E-16



OFF-BALANCE

● ●
INR 3,400
MT-E-12



BUTTON-UP

● ●
INR 3,500
MT-E-20



TWINNING TOWER



INR 5,400
MT-N-01



OBLIQUE



INR 1,800
MT-R-03



TWINNING MOON



INR 5,400
MT-N-02A



DOMAIN



INR 1,800
MT-R-04



ABACUS



INR 5,900
MT-N-03



QUAD RULE



INR 1,900
MT-R-05



YIN



INR 1,900
MT-R-01

