

# senelux

## INSTRUCTION MANUAL

### Ice Maker



Model: ICY1

**ENGLISH**

# TABLE OF CONTENTS

(I) Important	02
(Ii) Product Overview	05
(Iii) Specifications	06
(Iv) Instruction	06
(V) Instruction For Use	07
(Vi) Daily Maintenance	09
(Vii) Troubleshooting	10
(Viii) Warranty	11
(iX) Information	11

## 1. IMPORTANT

In order to avoid harm caused by misuse, please read the instruction manual carefully before using this product, and use this product strictly in accordance with the purpose stated in the instruction manual.

### **Warning**

1. To ensure safety, please be aware that the refrigerant used in this product is flammable. During maintenance, it is important to pay attention to any potential fire sources and ensure that the indoor environment is well-ventilated. Additionally, please refrain from using any combustible items near the machine to prevent fire hazards.
2. It is essential to maintain proper ventilation around the machine to ensure that it functions efficiently. To achieve this, it is recommended to avoid placing any obstacles near the machine that may obstruct the airflow and ventilation.
3. Please note that the defrosting process for this machine should only be carried out using the method recommended by the manufacturer. Any other machinery or methods used to accelerate the defrosting process may cause damage to the machine and its components.
4. It is important to handle the machine with care and avoid damaging the refrigeration circuit, as it may cause the machine to malfunction. Please be cautious and seek professional help when necessary to ensure that the refrigeration circuit remains intact.
5. To avoid potential hazards and ensure the proper functioning of the machine, it is recommended to use only the appliances recommended by the manufacturer in the machine pantry. The use of any other appliances may cause damage to the machine or pose a safety risk.
6. To prevent fire hazards, it is essential to keep the machine away from any potential sources of fire. If the machine needs to be disposed of, it is recommended to seek the assistance of professionals to ensure safe and proper disposal.

7. Please refrain from storing any explosive materials or combustion-supporting sprays in the appliance, as it may cause potential safety hazards.
8. It is essential to add only drinkable water to the machine.
9. The refrigeration system of the machine contains a high-pressure refrigerant that requires specialized knowledge and skills to handle. To ensure safety and avoid any damage to the machine, it is recommended to seek the assistance of professionals for the maintenance of the refrigeration system.
10. In case of any damage to the power cable, it is crucial to seek the assistance of the manufacturer's maintenance department or a similar professional staff to replace the cable. This will help prevent any potential safety hazards and ensure the proper functioning of the machine.

### **Attention**

This product is used for household, commercial or similar purposes: Kitchen, restaurants stores, offices, hotel, farm, similar non-retail and so on.

### **Safety tips**

The most important thing is yours and others safety, we have provided many important safety messages in this manual and on your appliance. Always read and obey all safety messages.

### **This is the safety alert symbol**

All safety messages will follow the safety alert symbol and the word "DANGER" and "WARNING". You can be seriously injured if you don't follow safety instructions.

All safety messages will tell you what the potential hazard is, tell you how to reduce the chance of injury, and tell you what can happen if the instructions are not followed.



**DANGER**



**WARNING**

## Advice

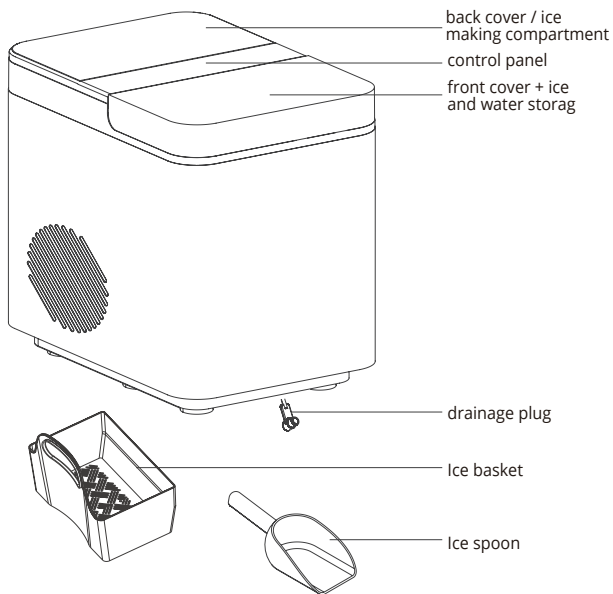
Never touch the evaporator surface by hand when the ice maker is working. It may cause frostbite to your skin.

When using household appliances, you must follow basic safety rules to reduce the risk of fire, shock and damage to people or objects. Please read the following safety tips carefully before using the appliance.

1. It is important not to use the machine if the power cable is damaged, as it may cause potential safety hazards. Please seek the assistance of our maintenance department or a similar professional staff to replace the cable.
2. To ensure the proper functioning of the machine and prevent any safety hazards, it is essential to use the correct power socket and ensure that the plug is fully inserted into the socket.
3. During use, it is recommended to avoid placing the power cable on the carpet or any heat insulation object. Please refrain from covering the cable and keep it away from walking channels. Additionally, please do not submerge the cable in water.
4. To prevent any potential safety hazards, it is not recommended to use an extension lead with the machine, as it may overheat and become a fire risk.
5. Before cleaning or making any repairs or servicing the ice maker, it is crucial to unplug the machine to prevent any potential safety hazards.
6. Children should only use the machine under the supervision of adults to ensure safety.
7. Please do not clean the ice maker with flammable liquids, as they may cause a fire or explosion.
8. It is essential not to turn over the ice maker. In case of any overturn, please place the machine forward for two hours before turning it on again to prevent any potential safety hazards.
9. If the ice maker is brought in from outside in winter, it is recommended to let it warm up to room temperature for a few hours before powering it up to prevent any damage to the machine's components.

## 2. PRODUCT OVERVIEW

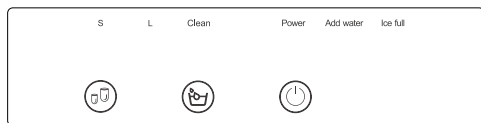
### Components




### 3. SPECIFICATIONS


<b>Product Model</b>	ICY1-RZB12(B)-N7-1
<b>Product size</b>	356x250x323mm
<b>Weight</b>	9.3Kg
<b>Rated Voltage</b>	220V-240V 50/60Hz
<b>Rated Power</b>	150W
<b>Noise</b>	55dB
<b>Refrigerate</b>	R290/18g
<b>Capacity of Water Tank</b>	1.3L
<b>Foamer</b>	Cyclopentane

### 4. CONTROL PANEL



 Power button

 Ice cube selection

 Automatic cleaning

**Power button**

Touch on/off.

**Ice selection button**

Touch select small ice/large ice in turn.

**Automatic cleaning button**

Automatic cycle cleaning water tank.

**Water shortage indicator**

Water shortage corresponding indicator light on (Add Water).

**Ice full indicator**

The corresponding indicator light is on when the ice is full (Ice Full).

**Power indicator**

Turn the power on to start. The power indicator light will be on.

**S** = Small ice cuber setting

**L** = Large ice cuber setting

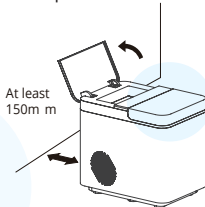
**Clean** = The device is set to cleaning mode

**Add Water** = Water must be added to the device

**Ice Full** = The device is full of ice

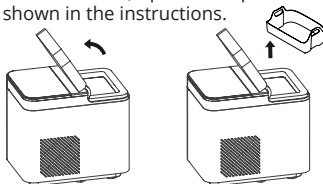
## 5. INSTRUCTIONS FOR USE

1. Before using the ice maker, make sure to remove all internal and external packaging, and check for the presence of ice baskets and spoons.
2. To clean the ice maker, remove the ice basket and wash it in warm water. Then, use a soft cloth to wash the tank with warm water.
3. When positioning the ice maker, avoid direct sunlight and exposure to high heat sources. Placing it in a shaded area will help to maintain its efficiency and prolong its lifespan.
4. Make sure to position the ice maker horizontally with at least 15cm of space between the sides and the back. This will allow for proper ventilation and prevent overheating.





- Before turning on the ice maker, ensure that it is plugged into a suitable socket. To use it, open the top cover and insert the ice basket, as shown in the instructions.



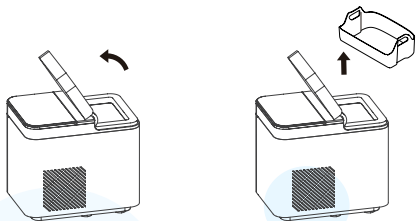
- To start making ice, simply touch the power button located on the control panel. Ensure that the initial water level in the tank is no more than 1 litre to ensure optimal ice making performance.
- Select the desired ice cube size by touching the ice cube selection button. If the room temperature is below 15°C, it is recommended to choose the small ice size to prevent ice linking.
- Open the front cover of the machine and remove the ice basket. Add water to the water tank, keeping the water level below the highest mark. Once the water level is correct, replace the ice basket and close the top cover.
- The duration of each ice-making cycle depends on the size of the selected ice cubes and the room temperature. The size of the ice cubes is also influenced by the water temperature and ambient temperature.
- If the pump cannot extract water, the ice maker will stop automatically, and the "add water" indicator light will turn on, indicating water shortage. At this point, the water tank should be filled, and then press the button to restart the ice making process.
- When the ice basket is full, the machine will stop making ice automatically.
- It is recommended to change the water in the tank every 24 hours to maintain the water's cleanliness. If the ice maker is not used for an extended period, it is advisable to drain the remaining water from the tank.
- To enter the cleaning function, touch the automatic cleaning button while in standby mode. The cleaning cycle takes approximately 30 minutes, during which the clean indicator flashes. Once the cleaning is complete, the water in the tank is drained from the bottom of the machine.

14. Regularly clean the exterior of the ice maker with a soft, damp cloth. Do not use abrasive cleaners or solvents.
15. Do not place any objects on top of the ice maker or use it as a work surface.
16. Do not move the ice maker while it is in operation or full of ice.
17. If it needs to be moved, turn off and unplug the machine first.
18. If there is a power outage or the machine needs to be turned off, remove any ice from the basket and drain the remaining water from the tank.
19. Allow the machine to dry completely before storing.

**Advice:** Use water that is drinkable.

## 6. DAILY MAINTENANCE

- Before / after using this ice machine, it is recommended that you completely clean the whole machine.
- Open the drainage plug to drain the water from the tank.
- Wipe the water tank with diluted cleaners, warm water and soft cloth.
- The outside of the machine should often use diluted cleaners and warm water.
- Wipe dry with a dry cloth.
- Close the drain plug when the machine is not used for a long time, the water tank should be drained and dried.



## 7. TROUBLESHOOTING

PROBLEM	POSSIBLE CAUSE	SOLUTION
"add water" indicator light on	Lack of Water	Add water to remake ice
	Water tank bottom blocked	Clean
Ice cubes sticking together	The ice making cycle time is too long; The evaporator is too much immersed in the ice box	Stop ice making. After the ice cubes melt, restart ice making and select Small Ice. Adjust the evaporator.
	The water temperature in the tank is too low	Change the water in the tank, the water temperature should be between 8°C and 32°C
The ice making process is normal, but no ice is formed	Ambient temperature or water temperature is too high.	Please make ice when the ambient temperature is lower than 32°C, & add a certain amount of cold water to the water tank
	Leak in the refrigeration system	Contact after-sales service
	Clogged refrigeration system	Contact after-sales service

**Note:**

If there is a failure outside the list, please consult the purchase store or contact the manufacturer's after- Sales Service Center to get help.

## 8. WARRANTY

All Senelux products are covered from the original purchase date by a standard 2-year warranty. To register your warranty, please visit [www.senelux.co.uk](http://www.senelux.co.uk).

If, in the unlikely event that your product has any manufacturing defect, please get in touch with our customer service team at [support@senelux.co.uk](mailto:support@senelux.co.uk). Please quote your order number and any other relevant details regarding your issues. FAQs and help regarding all our products are available on our website and YouTube channel.

Any unauthorised repair of this product invalidates your warranty.

## 9. INFORMATION

If you want further information regarding using this product or any of our products, don't hesitate to contact us via the details below.

Senelux Ltd  
Unit 5-6 105 Boundary Street  
Liverpool L5 9YJ  
United Kingdom  
Email – [info@senelux.co.uk](mailto:info@senelux.co.uk)  
Website – [www.senelux.co.uk](http://www.senelux.co.uk)



Be sure to tag us in your photos on social media using #seneluxathome to be featured



@senelux



@senelux



@Senelux



Thank you very much for using our products.  
Please read the user manual carefully before use and keep it for future reference.