

senelux

INSTRUCTION MANUAL

Air Circulator Desk Fan



Model: F120A

ENGLISH

TABLE OF CONTENTS

(i) Product Description	02
(ii) Safety Rules	03
(iii) Diagram Of The Structure	04
(iv) Display Diagram	05
(v) Product User Manual	05
(vi) Remote Control Instructions	07
(vii) Technical specifications	08
(viii) Usage Precautions	08
(ix) Product Components Disassembly	09
(x) Cleaning and Maintenance Tips	10
(xi) Warning Guidelines	12
(xii) Easy Troubleshooting	13
(xiii) Warranty	14
(xiv) Information	14

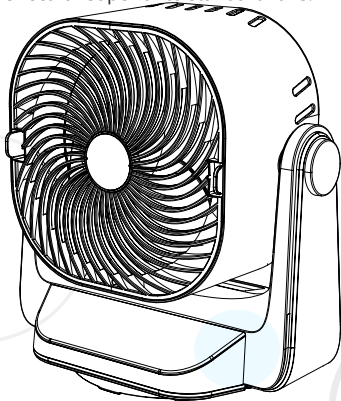
Dear valued customer,

We sincerely appreciate your purchase of our Senelux Air Circulator. Please read the accompanying manual to ensure you maximise your product and extend its lifespan. If you have any questions, please do not hesitate to contact us at support@senelux.co.uk. Additionally, we offer digital copies of this guide and our entire product range on our website, www.senelux.co.uk. Please let us know if you require translations in other languages, and we'll be happy to assist you.

Thank you once again for choosing Senelux. We hope our product exceeds your expectations and provides you with optimal satisfaction.

1. PRODUCT DESCRIPTION

The HTS-F120A is a 9-inch desktop direct current (DC) fan with an automatic horizontal & vertical oscillation mode, mute mode, timing function, and adjustable fan speed. The fan's operation is controlled via touch buttons, while a remote control with a separate light control function is provided. The air circulator fan is sturdy and safe but highly energy efficient. It is designed to circulate cool air around the room to create a practical cooling effect far superior to standard fans.



2. SAFETY RULES

Thank you for choosing our Senelux Air Circulator. Please read this instruction manual carefully before using the product!

Operation and Maintenance

1. Non-specialist or unauthorised personnel are prohibited from independently repairing or modifying this machine. Any unauthorised repair of this product not by the manufacturer or approved agent will invalidate warranties.
2. If the power plug or lead has any appearance of defects or becomes damaged, it must be replaced immediately.
3. In the improbable event of sparks, smoke, or unusual odours, the power plug of the electric fan should be immediately unplugged from the power source, and usage halted. Should repairs be necessary, they must be conducted by a professional repair person or the manufacturer.
4. When not used for an extended period, kindly unplug the power lead and store the product in a safe and dry place.
5. Please only disassemble or modify this product independently.
6. Please avoid touching the electric fan with wet hands or wiping it with water, as this could cause damage to the components. Please only use the fan when it is dry, and do not use it outdoors.
7. Before maintenance, cleaning, or moving the fan, kindly ensure that the switch is turned off and the power plug has been disconnected.
8. When removing the power lead, do it gently and carefully. Permanently remove it by holding the plug itself and not the power lead.
9. Please be careful when placing the product on the floor or nearby where persons or animals will be. Do not place the product lead under rugs or carpets; be mindful of trip hazards.

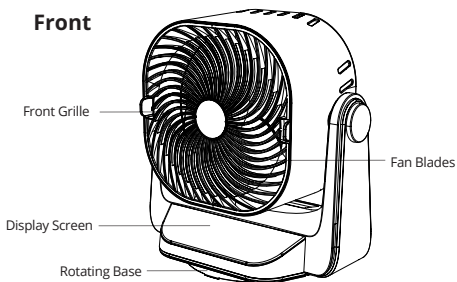
Usage Environment Conditions

1. Please do not place the fan in a tilted or unstable location. Place the fan in a stable position to avoid the machine falling and causing damage.
2. Please do not place the air circulator within reach of children or pets.
3. Using this machine in environments with flammable or explosive gases is strictly prohibited.

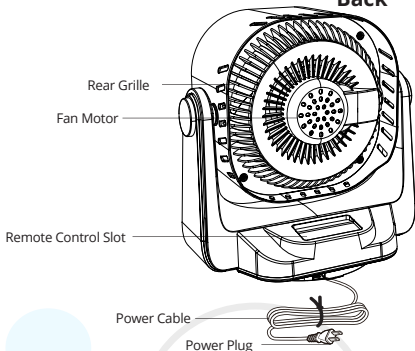
4. Avoid direct sunlight and remove your fan from heat sources such as stoves.
5. Do not use it in damp or humid environments, high-temperature locations such as direct sunlight, smoke-filled cars, heated rooms, etc
6. The product is designed for indoor use only.

3. STRUCTURAL DIAGRAMS

Front



Back



4. DIGITAL PANEL DISPLAY DIAGRAM



5. PRODUCT USER MANUAL

Please ensure the product is only plugged into a suitable UK household plug outlet (220V). Or the nec-essary compatible adapter is used for your area.

1. Fan Speed Button

- When the fan is stationary, lightly press the "+" button once to start the fan at a low speed. The motor will then operate in the standard fan "1" mode, and the characters for the fan speed will be displayed on the digital screen. Each press of the fan speed button increases the power level by one. The maximum fan speed is 8.
- Press the "-" button to lower the fan's speed when the fan is running at normal speed. Each press of the fan speed button reduces the fan power by one level, and the mini-mum fan speed level is 1.
- When the fan is operating, press and hold the "-" button to turn off the fan and enter standby mode. The digital screen will automatically display the ambient temperature.
- When the fan is in standby mode, press the "+" button to turn on the fan, and the fan will operate in the last chosen mode used before shutdown. (The timer settings cannot be saved).

2. Oscillation Button

- When the fan is operating, lightly press the left and right oscillation buttons to activate the oscillation functions of the fan. Press again to turn off this function.

- During operation, lightly press the up and down oscillation buttons to activate the fan's up and down oscillation functions. Press again to turn off the process.
- When the oscillation function is on, the text "Oscillation" and the corresponding symbol will be displayed on the screen. The corresponding character will turn off when the oscillation stops.

3. Timer Button

- When the fan is operating, press this button to set the timer shutdown timeframe. Each press increases the time by 1 hour; the longest setting time is 9 hours. The corresponding characters and numbers will be displayed on the digital screen to show how long it has been set.
- Press this button in standby mode to set the scheduled startup time. Each press increases the time by 1 hour; the longest setting time is 9 hours. The corresponding characters and numbers will be displayed on the digital screen. After setting the timer, you can also set the fan speed, oscillation, and mode. If no changes are made within 5 seconds of setting the timer, the setting is complete.

4. Fan Mode & ECO Mode

- As soon as the fan is turned on, the fan is set to standard fan mode, and the corresponding symbol indicator on the digital screen will be displayed. Press this button to enter the selection of the fan mode, which includes natural mode and sleep fan mode, indicated by the corresponding symbol on the digital screen.
- During standard fan mode operation, pressing this button for the first time activates natural fan mode, and the corresponding indicator lights up; pressing it for the second time activates sleep fan mode, and the related indicator lights up; pressing it for the third time restores the standard fan mode, and the fan mode is set in a cycle in this order.
- ECO Mode is the most energy-efficient fan mode and uses the least energy. To enter ECO mode, hold the mode button for over 3 seconds during operation. The indicator light is on, and the fan can automatically switch speed modes according to the ambient temperature. Hold down the mode button for more than 3 seconds again to exit ECO mode. The fan speed symbol corresponding to the ambient temperature under the ECO mode is shown in the table below: When the fan operates in natural mode, sleep mode, or ECO mode, the fan speed button is not adjustable. You must switch back to the standard mode to adjust the fan speed.
- The fan speed button is not adjustable when the fan operates in natural, sleep, or ECO mode. You must switch back to the standard mode to adjust the fan speed.

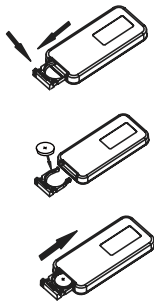
Temperature (°C)	<20	20<X≤22	22<X≤24	24<X≤26	26<X≤28	28<X≤30	30<X≤32	>32
Speed level	1	2	3	4	5	6	7	8

- When the fan is operating in natural mode, sleep mode, or ECO mode, the fan speed button is not adjustable. You must switch back to the standard mode to adjust the fan speed.

Normal wind  Natural wind  Sleeping wind  ECO 

6. REMOTE CONTROL INSTRUCTIONS

- The remote control has the same functions as the digital display control panel.
- Before use, please remove the insulating sheet from the battery compartment.
- The remote control can receive signals from approximately 4.5 meters (15ft) at an angle of 30 to 45 degrees.
- Please replace the battery if the remote control does not work when it is very close to the unit.
- Incorrect installation may cause battery leakage, corrosion, and damage to the remote control. Please follow the following preventive measures:
 - When replacing the battery, please use a brand-new, high-quality battery.
 - When not using your product for an extended period, please remove the battery to prevent leakage.
 - Please refer to the diagram on the right for instructions on replacing the remote control battery.



Please recycle used batteries.

When disposing of used batteries, please place them in government-designated recycling stations to avoid polluting the environment. Many supermarkets and hardware stores offer accessible recycling facilities. The outer cardboard of this product box is also fully recyclable.

7. TECHNICAL SPECIFICATIONS

Product model	F120A
Rated voltage/frequency	220V~240V, 50Hz
Rated power	28W
Product dimensions	333x220x347mm
Power cord length	1.6M

8. USAGE PRECAUTIONS

1. Before Use

- Before use, please carefully read the instructions in this manual;
- Check that the voltage used is the same as the voltage indicated on the machine.
- Please place your fan out of reach of small children and pets.

2. During Use

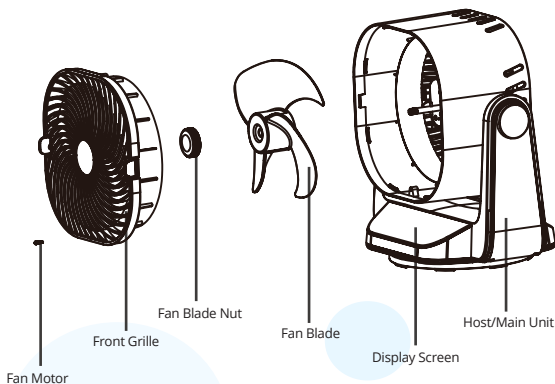
1. Please avoid sharing the same socket with other electrical products, especially with other high-powered items on an extension lead. Please keep the power cable plug and the body of the machine dry.
2. If there is a spark, smoke, or any unusual smell, immediately unplug the power plug of the fan from the power supply and stop using it.
3. Do not open the front grille of the fan or disassemble or modify this product by yourself.
4. Do not touch the fan with wet hands or wipe it with water to avoid damage to the components caused by water.
5. Do not pour or insert abnormal items such as liquids or metals into the fan.
6. Do not place the fan in places with heavy moisture or humidity, direct sunlight, hot smoking cars, heating rooms, and other high-temperature areas.

7. Do not place the fan in an unstable position during operation.
8. Pay special attention to children, and do not let them play with the fan or insert fingers or objects into the front grille.
9. When unplugging the power cord, hold the plug and pull it out gently; do not pull the power cord with force.
10. When not using this product for an extended period or when going out, unplug the power plug to avoid standby power consumption and to save energy.

Warning:

- If the power cord is damaged, it must be replaced by authorised service personnel or the manufacturer.
- Before disassembling, please unplug the plug from the power source.
- This product is not intended for use by individuals with physical weakness or slow reaction time (including children) unless used safely under the guidance or assistance of those responsible for safety.
- This product should not be immersed in water during cleaning or under any circumstances.

9. PRODUCT COMPONENTS DISASSEMBLY



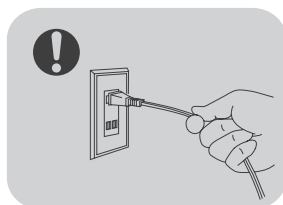
- [Removing screws]: Use a crosshead screwdriver to loosen and remove the screws that fix the front grill.
- [Remove the front grill]: After removing the screws, hold the front grill with your hand and rotate it counter clockwise to remove it from its snap-fit.
- [Remove the fan blades]: Rotate the fan blade nut clockwise to remove it, then remove the fan blades.

After removing the components, wipe them clean with a damp cloth or neutral detergent, and then thoroughly dry them with a soft dry cloth.

10. CLEANING AND MAINTENANCE TIPS

1. Before cleaning and maintaining this product, unplug the plug and wait for the appliance to cool down completely.
2. Do not use chemical solvents such as toluene, bleach, stiff brushes, etc., to avoid scratching or corroding the machine's appearance. If there is staining or stubborn dirt, using a neutral detergent for tableware to clean is recommended.
3. The fan blade of the electric fan is an essential component. It must be protected against deformation during installation, disassembly, cleaning, and use.
4. The actions should not be too aggressive or fast when operating various function switches, buttons, and knobs.
5. Ensure any oil and dust on the fan are cleaned regularly. Do not wipe with gasoline or alkaline solid solutions to avoid damaging the surface paint parts' function.
6. If the fan has a problem, such as a hot surface, abnormal burnt smell, or slow speed during use, do not continue to use it. Please cut off the power and inspect immediately.
7. Before storing the fan, thoroughly clean the surface oil and dust and wipe it with a soft dry cloth. Then wrap it in dry paper or a clean cloth. The storage location should be dry and ventilated to prolong the product's lifespan.
8. Do not wash the central unit directly with water to prevent short circuits or damage.

Note: The motor's rotating shaft in this product does not require additional oil maintenance. Do not spray maintenance oil (such as rust removal, rust-proof, sewing machine, etc.) by yourself.

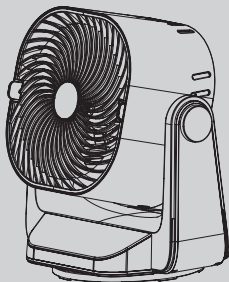


11. WARNING GUIDELINES

Do not forcefully straighten with your hands.

When the electric fan rotates naturally to a certain angle, do not forcefully straighten it with your hands. Forcibly straightening the fan may damage the internal structure.

If you need to adjust the angle, please use the "oscillation" function key.



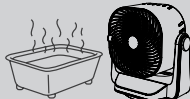
 Prohibited



 Prohibited



 Prohibited



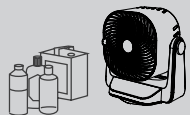




 Prohibited



 Prohibited



12. EASY TROUBLESHOOTING

1. Basic Maintenance

If the fan is malfunctioning, please try these simple troubleshooting measures. If there is abnormal noise during the operation, please pay attention to the following: If smoking or burning occurs during use, please immediately unplug the power cable and contact the Senelux customer service team or your local service agent.

1. Check that the power plug is correctly inserted in a functioning socket.
2. Check if the product is switched on.
3. Please try another adapter or power socket if the fan doesn't power. You can contact the manufacturer directly through the email listed and the bottom of this guide or via our website LifeChat.

2. Simple Repair

If there is abnormal noise during the operation, please pay attention to the following:

1. Whether the fan blade is indeed inserted into the motor axis centre.
2. Whether the fan blade is deformed and hitting the front net.
3. Whether the front net is appropriately assembled.
4. Is there a foreign object trapped in the fan?

3. Emergency Troubleshooting

If smoking or burning occurs during use, please immediately unplug the power cable and contact the Senelux customer service team or your local service agent.

13. WARRANTY

All Senelux products are covered from the original purchase date by a standard 2-year warranty. To register your warranty, please visit www.senelux.co.uk.

If, in the unlikely event that your product has any manufacturing defect, please get in touch with our customer service team at support@senelux.co.uk. Please quote your order number and any other relevant details regarding your issues. FAQs and help regarding all our products are available on our website and YouTube channel.

Any unauthorised repair of this product invalidates your warranty.

14. INFORMATION

If you want further information regarding using this product or any of our products, don't hesitate to contact us via the details below.

Senelux Ltd
Unit 5-6 105 Boundary Street
Liverpool L5 9YJ
United Kingdom
Email – info@senelux.co.uk
Website – www.senelux.co.uk



Be sure to tag us in your photos on social media using #seneluxathome to be featured



@senelux



@senelux



@Senelux



Thank you very much for using our products.
Please read the user manual carefully before use and keep it for future reference.