

# senelux

## INSTRUCTION MANUAL

### Compressor Dehumidifier



Model: Taurus

**ENGLISH**

# TABLE OF CONTENTS

<b>i.</b>	<b>Safety Precautions</b>	<b>02</b>
<b>ii.</b>	<b>Points For Attention</b>	<b>08</b>
<b>iii.</b>	<b>Product Overview</b>	<b>10</b>
<b>iv.</b>	<b>Operation Instruction</b>	<b>12</b>
<b>v.</b>	<b>Wi-Fi Setup</b>	<b>16</b>
<b>vi.</b>	<b>Drainage Instruction</b>	<b>18</b>
<b>vii.</b>	<b>Cleaning And Maintenance</b>	<b>19</b>
<b>viii.</b>	<b>Troubleshooting</b>	<b>20</b>
<b>ix.</b>	<b>Warranty</b>	<b>23</b>
<b>x.</b>	<b>Information</b>	<b>23</b>

## 1. SAFETY PRECAUTIONS

This page records the main topics of safety precautions to prevent personal injury or property loss of users and others. Please read them carefully and observe the precautions recorded here.

1. Do not operate this machine with damp hands, nor rinse the dehumidifier directly with water or place it close to a water source.
2. Refrain from putting your hands inside the air outlet. Do not place hefty objects atop the air outlet or sit on it.
3. Avoid placing any objects inside or on top of the dehumidifier.
4. Avoid using this machine in the presence of flammable or explosive gases and keep it distanced from any heat sources.
5. If the machine is not going to be used for an extended power period. Please make sure it is turned off via the mains. This will help conserve energy and reduce the risk of any potential electrical issues during its idle time.
6. In case of unusual occurrences (e.g., the machine emitting a burning smell), immediately cease operation and disconnect the power supply.
7. During thunderstorms, it is essential to disconnect the power supply.
8. Unauthorised replacement of the power cable or use in conjunction with other high-powered electrical appliances is prohibited.
9. Unauthorised disassembly, modification, repair, or internal cleaning of the machine is strictly forbidden.
10. Prior to cleaning the machine, ensure it is switched off and the power is disconnected.
11. This appliance is strictly for indoor use.
12. Avoid using the unit with a socket that is under repair or improperly installed.
13. Do not use the unit in the following situations:
  - A. Near a fire source.
  - B. Exposed to direct sunlight.
  - C. Where oil splatters are likely.
  - D. Where water splashes are likely.
  - E. Near a bath, laundry, shower, or swimming pool.

14. Never insert fingers or any objects into the air outlet. Children should be specifically warned about these dangers.
15. During transport and storage, keep the unit upright to maintain the correct position of the compressor.
16. Supervise children to prevent them from playing with the appliance.
17. If the power cable is damaged, it must be replaced by the manufacturer, a service agent, or a similarly qualified person to avoid hazards.
18. This appliance can be safely used by children aged 8 years and above and individuals with reduced physical, sensory, or mental capabilities or lack of experience and knowledge, provided they are given supervision and instruction. Cleaning and maintenance by children must be undertaken under supervision.
19. Installation of the appliance must comply with national wiring regulations.
20. Fuse type and rating: T,250V AC,8A.
21. **Recycling.**

This marking indicates that this product should not be disposed of with other household wastes throughout the EU. To prevent possible environmental or human health harm from uncontrolled waste disposal, recycle it responsibly to promote the sustainable reuse of material resources. To return your used device, please use the return and collection systems or contact the retailer where the product was purchased. They can take this product for environmentally safe recycling.



22. Contact an authorised service technician to repair or maintain this unit.
23. Do not pull, deform. Or modify the power supply cable or immerse it in water. Pulling or misusing cable can damage the unit and cause electrical shock.
24. Compliance with national gas regulations shall be observed.
25. Keep ventilation openings clear of obstruction.
26. Any person working on or breaking into a refrigerant circuit should hold a currently valid certificate from an industry accredited assessment authority, which authorises their competence to handle refrigerants safely per an industry-recognized assessment specification.
27. Servicing shall only be performed as recommended by the equipment manufacturer. Maintenance and repair requiring the assistance of other skilled personnel shall be carried out under the supervision of the person competent in the use of flammable refrigerants.
28. Do not operate or stop the unit by inserting or pulling out a Die power plug; it may cause electric shock or fire due to heat generation.
29. Unplug the unit if strange sounds, smell, or smoke comes from it.



**Notes:**

1. Don't hesitate to contact the dealer or a designated repair shop if any parts are damaged.
2. In case of any damage, please turn off the air switch, disconnect the power supply, and contact the dealer or a designated repair shop.
3. Firmly ground the power supply cable.
4. To avoid danger, if the power cable is damaged, please turn off the air switch and disconnect the power supply. The dealer or a designated repair shop must replace it.

**STORAGE AND DISPOSING OF THE UNIT**

- Please recycle or dispose of the packaging material for the product in an environmentally responsible manner.
- Never store or ship the dehumidifier upside down or sideways to avoid damage to the compressor.
- Dispose of this appliance following Federal and Local regulations. Refrigerants must be evacuated before disposal.

**WARNING**

**Risk of Fire or Explosion. This unit contains flammable refrigerant additional safety precautions must be followed.**

- Do not use means to accelerate the defrosting process or to clean other than those recommended by the manufacturer.
- The appliance should be stored in a room without continuously operating ignition sources (for example, open flames, an operating gas appliance, or an operating electric heater).
- Do not pierce or bend refrigerant tubing. Be aware that refrigerants may not contain an odour.
- Keep ventilation openings clear of obstruction.
- When handling, installing and operating the appliance. Care should be taken to avoid damaging the refrigerant tubing.
- Do not drill holes in the unit.
- Maintenance, cleaning. And service should only be performed by technicians adequately trained and qualified in using flammable refrigerants.
- Dispose of the air conditioner following: Federal and Local Regulations. Flammable refrigerants require special disposal procedures. Contact your local authorities for the environmentally safe disposal of your air conditioner.

### **Transportation of Equipment Employing Flammable Refrigerants**

Take note of any additional transportation regulations that may exist concerning equipment containing flammable refrigerants. The respective transport regulations will specify the maximum quantity of equipment, or the configuration of the equipment that can be transported together.

### **Marking of Equipment**

Signs for similar appliances used in a work area are typically governed by local regulations, which lay out minimum requirements for safety or health signs in a given workspace.

All mandatory signs must be maintained in good condition. Employers are responsible for ensuring their employees receive suitable and comprehensive instruction and training on the meanings of the relevant safety signs and the necessary actions associated with these signs.

To preserve the effectiveness of the signs, limit the number of signs grouped together. Any pictograms included should be as straightforward as possible and convey only essential information.

### **Disposal of Equipment Using Flammable Refrigerants**

Please refer to national regulations for proper disposal procedures.

### **Storage of Equipment/Appliances**

Storage of equipment should align with the manufacturer's instructions.

### **Storage of Packaged (Unsold) Equipment**

The protective packaging for storage should be designed to prevent mechanical damage to the equipment, thus avoiding potential leaks of the refrigerant charge. Local regulations will dictate the maximum quantity of equipment that can be stored together.

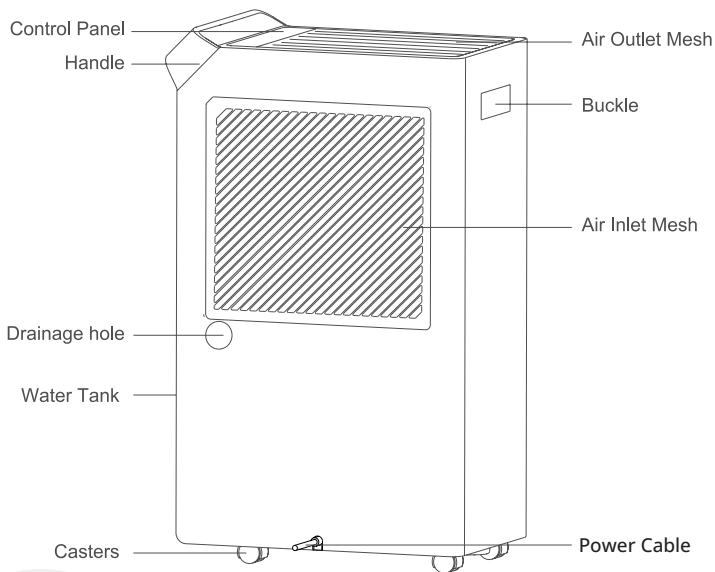


## 2. POINTS FOR ATTENTION

1. Ensure the machine is placed on flat, sturdy ground. Maintain a gap of over 50cm (20 inches) between the wall and machine for optimal heat dissipation.
2. Avoid submerging the machine in water or placing it near a water source.
3. Refrain from operating the machine if the power cable or other connectors are damaged, or if anything unusual occurs. Do not hesitate to contact the manufacturer's after-sales service or the point of purchase.
4. When the machine is being relocated, cleaned, maintained, or not in use, disconnect it and switch off the main power supply.
5. This machine is intended solely for indoor dehumidification and air purification, not for other purposes. Ensure sufficient air circulation when using it in basements or storage rooms; otherwise, its dehumidifying performance may be diminished.
6. Operate this product using the specified power supply and voltage.
7. Do not tilt the machine if the compressor is damaged.
8. Refrain from inserting any object into the machine to avoid potential problems.
9. If it's necessary to restart the machine after shutdown, allow it to rest for 3 minutes before starting again.
10. This machine is unsuitable for those unable to carry out civil conduct, including individuals with physical and mental disabilities and children. If necessary, operate it under the supervision and guidance of qualified personnel to prevent injury.

11. If using a power strip or other bases to power on the machine, ensure these devices comply with national safety regulations.
12. If this machine is accidentally tilted, dumped, or has undergone long-distance transportation, allow it to stand upright for 4 hours before starting up.
13. Avoid sharing the machine's socket with other high-power devices.
14. Operate this machine within a room temperature range of 5°-35°(41°-95°F).
15. Please recycle packaging materials responsibly to help protect the environment. For advice on proper recycling procedures, consider reaching out to your local recycling centre.
16. This appliance is not designed for use by persons (including children) with reduced physical, sensory, or mental capabilities, or lack of experience and knowledge, unless they have been provided with supervision or instruction regarding safe appliance use by a responsible adult. Ensure children are supervised to prevent them from playing with the appliance.

### 3. PRODUCT OVERVIEW

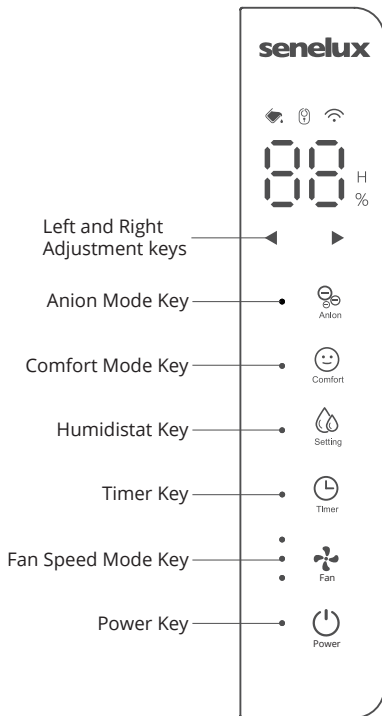


**Specification:**

<b>Region</b>	Europe
<b>Model</b>	TAURUS-RCS25(Y)-N7-1
<b>Voltage</b>	220V-240V 50Hz
<b>Power</b>	320W
<b>Refrigerant</b>	R290/80g
<b>Daily Dehumidification Capacity</b>	25L/D (30°C 80%RH)
<b>Effective Area</b>	20-50m <sup>2</sup>
<b>Water Tank Capacity</b>	5.5L
<b>Noise Decibel</b>	≤45dB
<b>Timing Custom</b>	0-24h
<b>Product Weight</b>	13.8kg
<b>Product Dimension</b>	366×220×613mm

## 4. OPERATION INSTRUCTION

## Control Panel



## Key Description

 Power Key


Press the power key once to turn it ON or OFF.

The compressor is equipped with a self-protection feature that introduces a 3-minute delay if the machine is turned off and then on again within a 3-minute interval. This means the compressor will wait for 3 minutes before restarting.

Additionally, the machine is designed with a memory function, ensuring that when powered on, it automatically resumes the last used settings

## Fan Speed Mode Key

Use this key to select different levels of fans speed. The fan speed can be adjusted under each humidistat setting.

Note: This key also serves as the Child Lock switch. Press and hold it for 3 seconds to activate or shut down the Child Lock. The corresponding indicator light  will illuminate accordingly.

## Timer Key

Upon powering up the machine, press the Timer key. A beep will sound, and the corresponding status indicator along with the 'H' timer symbol will light up.

After pressing the Timer key, use the Left or Right adjustment keys to select your desired duration (0-24 hours).

Once the set duration elapses, the machine will automatically switch to standby mode.

Important Notes for Timer Use:

1. If you turn off the machine using the On/Off key before the timer completes, the timer setting will be cancelled.
2. Changing the working mode during the timer's operation will not affect the original settings.
3. A timing accuracy deviation of  $\pm 0.7\%$  is normal when the ambient temperature is between  $0^{\circ}\text{C}$ - $40^{\circ}\text{C}$  ( $32^{\circ}\text{F}$ - $104^{\circ}\text{F}$ ).
4. To modify the timer settings, simply press the Timer button again.

Note: The Timer key also functions as the Wi-Fi key, serving dual purposes based on the duration of the press. Refer to the section "Wi-Fi Setup".

## Humidistat Key

When you press this key, the corresponding status indicator and humidity symbol '%' will illuminate. At the same time, the Left and Right Adjustment keys will light up and flash. This signals that you can set your desired target humidity using these adjustment keys. You can set the humidity level within a range of 40% to 80%, with the default setting being '40'. Each press of this key will increase or decrease the value by 5%. If you set it at '40', this means no specific target humidity is established.

After you've set your target humidity, if there's no signal indicating that the Left and Right Adjustment keys have been pressed for more than 3 seconds, the machine will consider the setting valid. Subsequently, the Left and Right Adjustment keys will cease flashing and return to their normal display state.

## Comfort Mode Key

In the startup status, press the Comfort Mode key, its indicator light will be on, and the machine will enter the rate of comfortable dehumidification (dehumidification humidity will be controlled automatically between 45% and 55%). Press this key again, and its indicator light will be off, and every time it is pressed, the buzzer will sound once.

## Left and Right Adjustment keys

This key is only effective when either the Custom Dehumidification key or the Timer key is valid; When this key takes effect, the Left and Right Adjustment keys flash three times and light up one by one. Finally, both are on (the process takes about 3 seconds). At this time, corresponding settings can be made. Please refer to the corresponding vital descriptions and Indicator Light Descriptions for detailed setting methods.

## Anion Key

Turn on and off the negative ion functions. This releases negative ions into the air, which then attach themselves to positive ions, such as dust and pollen, which are floating in the air. The enlarged ion becomes too heavy to stay afloat and falls either into the dehumidifier's filter or onto the ground, where it can be vacuumed up.

## Indicator Light

The two-digit code tube is a white light highlight field; Its display functions are as follows:

1. The current measured ambient relative humidity states are displayed as follows.
  - In the startup state, the humidity can be displayed directly.
  - In the shutdown state, the number is not displayed.
  - The usual range of ambient humidity is 40-80; LO is shown when it is below 40, and HI is shown when it is above 80.
2. **Set humidity:** After pressing the humidistat key and left and right adjustment keys, you can start. See "Description of humidistat key" for details.
3. **Set Timer clock:** You can set Timer clock after pressing the Timer key and left and right adjustment keys. See "Description of Timer key" for details.

## Full Tank Light

The full tank light illuminates when the water tank is full. The machine will automatically stop and return to normal operation after the water tank is emptied and reinstalled. The 3-minute compressor protection will apply.

## Wi-Fi indicator light

Slow flashing - This indicates the machine is in a compatible networking mode and is ready to connect to a network.

Quick flashing - The machine is actively attempting to connect to a network.

Staying on - A constant light signifies that the machine has successfully connected to the network.

Staying off - This indicates three possible states: 1) The machine is in the standby mode; 2) the network is disconnected; 3) or the Wi-Fi module signal is undetected.

If the machine was previously connected to Wi-Fi, the Wi-Fi light will be on upon start up

Note: When the machine is in standby mode, the default setting is for the Wi-Fi indicator light to remain off.



## 5. WIFI SETUP

### Installation and Setup of the “Smart Life” App

#### Step 1: Download the “Smart Life” App

Utilise your mobile phone’s camera to scan the QR code provided below, this will guide you to download the “Smart Life” app. Alternatively, you can manually find and download the app by typing “Smart Life” in your preferred app store such as Google Play or the Apple App Store.



#### Step 2: Registration

After installing the app, open it and click on “Register”. You can choose to register using either your phone number or email address. Once you have registered, log into the app with your new “Smart Life” account.

#### Adding a Device

##### Step 1: Prepare Your Phone

Ensure your mobile phone is connected to your home wireless network and that Bluetooth is turned on. Make sure to connect to a 2.4GHz Wi-Fi network for optimal performance.

##### Step 2: Open the “Smart Life” App

Launch the “Smart Life” app on your device.



##### Step 3: Navigate to the App’s Homepage

From here, click the “+” button to begin the process of adding a device. You will then see options for manual addition or automatic discovery.

##### Step 4: Automatic Discovery

With the appropriate permissions enabled (location, Wi-Fi and Bluetooth), the app can automatically find devices that are in network configuration state and powered on. If it failed to connect to the device automatically, please try adding it manually.

## Step 5: Manual Addition

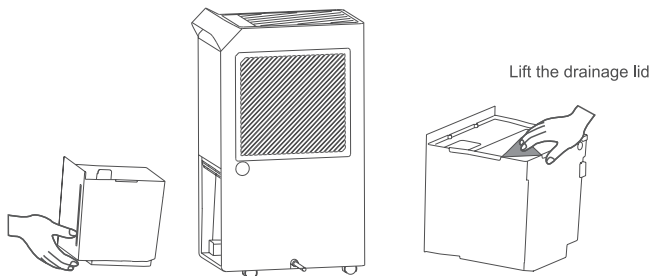
1. **Select Device Type:** In the app, choose the device type that matches your product. Use the sidebar to navigate through product categories, e.g., Small Home Appliances > Dehumidifier (Wi-Fi).
2. **Pairing Mode:** Ensure the machine is on. Then press and hold the Timer button  for about 5 seconds until you hear a beep. A rapidly flashing indicator light  signifies the device is in pairing mode.
3. **Follow App Instructions:** Complete the setup by following in-app instructions and entering your Wi-Fi password.

**Wi-Fi Reset (if needed):** To reset the Wi-Fi network, press and hold the Timer button for 5 seconds while the Wi-Fi light is on

## 6. DRAINAG INSTRUCTIONS

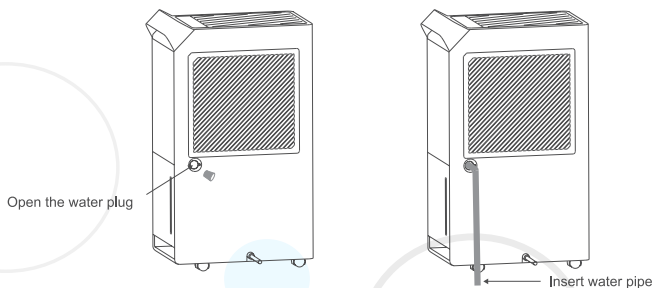
### Water Tank Drainage

When the Full Tank alarm goes off, the indicator light is on, and the water quantity can be viewed through the tank window; Gently pull out the tank by hooking the buckle at the bottom. You can carry the tank (there is a built-in handle in the tank) to the drainage area, then lift the drainage lid at the corner of the tank lid and slowly tilt the tank to empty the water.



### Continuous Drainage

Open the soft water plug at the rear shell, take out the PVC water pipe, and insert one end of it into the continuous drainage hole of the machine with the other end in the drainage area.



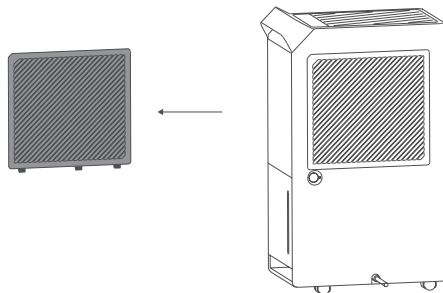
## 7. CLEANING AND MAINTENANCE

Note: Before cleaning and maintaining the machine, please turn off the device and unplug the power plug in case of an electric shock.

Before cleaning or maintaining the machine in any mode, the device must be shut down, the power plug must be unplugged, and water cannot be sprinkled on the machine; Clean the casing with a soft wet cloth and chemical solvents such as benzene, alcohol, and gasoline are not allowed to use. Otherwise, the machine casing will be damaged or even deformed.

### Cleaning of the filter:

This machine is equipped with a washable filter, which should be cleaned every 2 weeks, as the device will be less efficient if the filter is blocked by dust.



The filter can be removed for cleaning from the buckle on the left side plate and easily installed by inserting the fastener into the slot.

## 8. TROUBLESHOOTING

**Shutdown Before Maintenance:** Always turn off the machine and unplug the power cord before cleaning or performing any maintenance.

**Avoid Water Exposure:** Do not sprinkle water on the machine.

**Cleaning the Casing:** Use a soft, damp cloth for cleaning. Avoid using chemical solvents such as benzene, alcohol, or gasoline as they can damage or deform the casing.

### **Compressor Operation Conditions:**

**Temperature Constraints:** The compressor may not operate if the ambient temperature is below 5°C (50°F) or above 35°C (95°F), or if the temperature sensor malfunctions.

**Defrosting Cycle:** If the sensor detects the evaporator copper tube's temperature is below 2°C (28°F) (even though the room temperature is higher than that), the machine will enter a defrost cycle for about 30 minutes. The machine should return to normal operation once defrost is completed.

**Compressor and Fan Operation:** During the defrost cycle, the compressor is inactive, but the fan will continue to operate.

### **Troubleshooting Prior to Contacting Customer Service:**

If you encounter any operational issues, please refer to the common problems list provided to determine the nature of the fault. This step is crucial before consulting customer service for assistance.

Fault Description	Fault Diagnosis	Product Status	Solution
Code E1 in slow flash	Temperature sensor on the coil or associated circuit	The touch control panel is functional. The machine is still in operation and will work in the following cycle: dehumidify for 30 minutes and defrost for 10 minutes.	Power off and on again.
Code E2	Humidity sensor or associated circuit	The machine stops working. The touch control panel does not respond.	Power off and on again. Contact the manufacturer if still unsolved
Code L3 in slow flash	The period of ambient temperature $\geq 42^{\circ}\text{C}$ is longer than 60 seconds	The machine may stop working. The touch control panel may not respond	Power off and on again. Due to the 3-minute protection, the machine will start operating after 3 minutes. This error code does not indicate an error of the machine. It triggers a protection for the compressor to work within appropriate environment.
Code L4 in slow flash	The period of ambient temperature $\leq 0^{\circ}\text{C}$ is longer than 60 seconds	The machine may stop working. The touch control panel may not respond.	Power off and on again. Due to the 3-minute protection, the machine will start operating after 3 minutes. This error code does not indicate an error of the machine. It triggers a protection for the compressor to work within appropriate environment.
Code HS	Enter defrosting mode	The touch control panel does not respond	Indicates that the machine is defrosting, which will automatically return to standard display after finishing the process

## Important Operational Notes

1. Always ensure that the air inlet and outlet of the machine is unobstructed during operation. This is crucial for maintaining efficient airflow and preventing overheating or malfunction.
2. If the machine displays any unknown error codes, first attempt to resolve the issue by powering off and then powering on the machine.
3. Should the error persist after restarting, please contact customer service for professional support and guidance. Our website has a live chat, and you will find many instruction guides on YouTube.
4. Do not disassemble the appliance to fix it yourself; doing so will invalidate warranties.

## 9. WARRANTY

All Senelux products are covered from the original purchase date by a standard 2-year warranty. To register your warranty, please visit [www.senelux.co.uk](http://www.senelux.co.uk).

If, in the unlikely event that your product has any manufacturing defect, please get in touch with our customer service team at [support@senelux.co.uk](mailto:support@senelux.co.uk). Please quote your order number and any other relevant details regarding your issues. FAQs and help regarding all our products are available on our website and YouTube channel.

Any unauthorised repair of this product invalidates your warranty.

## 10. INFORMATION

If you want further information regarding using this product or any of our products, don't hesitate to contact us via the details below.



Senelux Ltd  
Unit 5-6 105 Boundary Street  
Liverpool L5 9YJ  
United Kingdom  
Email – [info@senelux.co.uk](mailto:info@senelux.co.uk)  
Website – [www.senelux.co.uk](http://www.senelux.co.uk)



Be sure to tag us in your photos on social media using #seneluxathome to be featured



@senelux



@senelux



@Senelux



@senelux.official



Thank you very much for using our products.  
Please read the user manual carefully before use and keep it for future reference.