

HOW TO USE THE EAZI-BREED™ CIDR® CATTLE INSERT



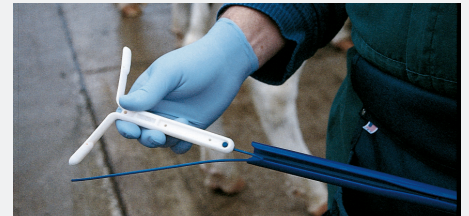
FOR BEST RESULTS, FOLLOW THESE SIMPLE STEPS:



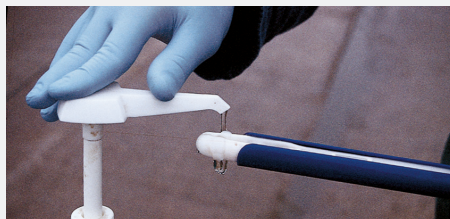
1 Wear protective gloves whenever handling the Eazi-Breed™ CIDR® Cattle Insert.



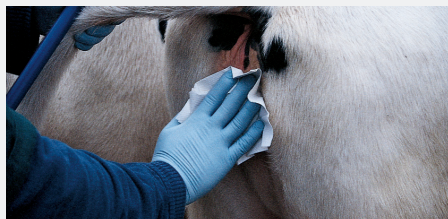
2 Prepare a container of clean water with NOLVASAN® solution. Wash the applicator with the water between uses.



3 Fit the body of the insert into the applicator with the tail along the slot. The two wings will be pushed together, protruding about 1 inch above the top of the applicator.



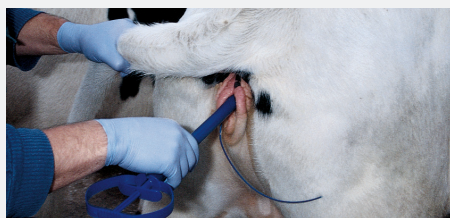
4 Apply a generous amount of NOLVALUBE® or another lubricant to the tip of the insert.



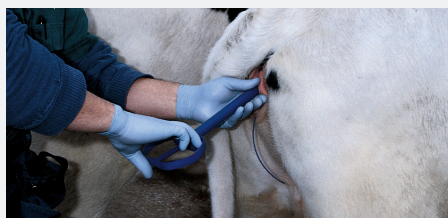
5 Shift the animal's tail to one side and clean the vulva.



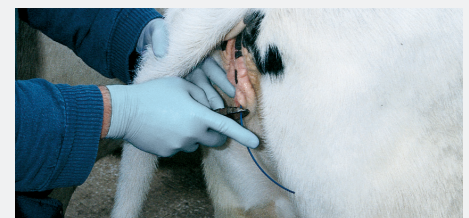
6 Open the lips of the vulva and insert the applicator at a slightly upward angle, moving forward over the pelvic bone until it meets resistance.



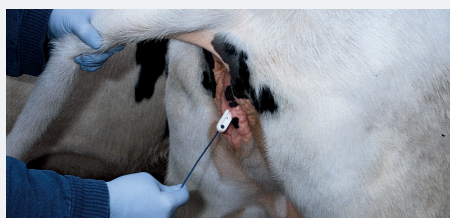
7 Make sure the tail of the Eazi-Breed CIDR is on the underside of the applicator, curling down, to ensure the tail will be hidden from curious penmates.



8 Dispense the insert from the applicator by depressing the plunger, then slowly withdraw the applicator.



9 To prevent removal by curious penmates, you may want to clip the tail of the insert so that 2 ½" protrudes from the vulva.



10 To withdraw the insert according to label at a later time, simply give the tail a gentle but firm pull to release the insert.



11 Dispose of used inserts in a sealed plastic container in accordance with applicable local, state and federal regulations.

For more information on Eazi-Breed CIDR, visit cidr.com/dairy.



IMPORTANT SAFETY INFORMATION: Avoid contact with skin by wearing protective gloves when handling Eazi-Breed CIDR inserts. Do not use in heifers of insufficient size or age for breeding or in cattle with abnormal, immature, or infected genital tracts. Do not use inserts more than once.

DAIRY WELLNESS MAKES A DIFFERENCE™

All trademarks are the property of Zoetis Inc., its affiliates and/or its licensors. All other trademarks are the property of their respective owners. ©2015 Zoetis Inc. All rights reserved. CDR-00013

