

SPROLINK®

CREATIVE VIDEO REVOLUTION



VD2 PLUS

**MODULAR VIDEO WALL CONTROLLER
3D/4K PIXEL-TO-PIXEL LARGE SCALE SOLUTION**

www.sprolink.com

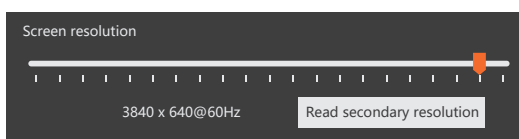
1 FEATURES

- Customize Output Resolution by Module
- EDID Management
- 3D Splicing and Switching
- Pixel-to-Pixel Splicing of Multi-channel 4K Input
- Visualization Software

2 MAIN FUNCTION

Customize Output Resolution by Module

Each installed module can be independently configured for resolution within 3840 in horizontal and 2048 in vertical. One unit Support multiple Screen with different resolution.



- IPAD Control
- Projection Edge Blending
- Display up to 8 Layers by Single Port
- Expandable I/O slots
- Redundant Power Supply

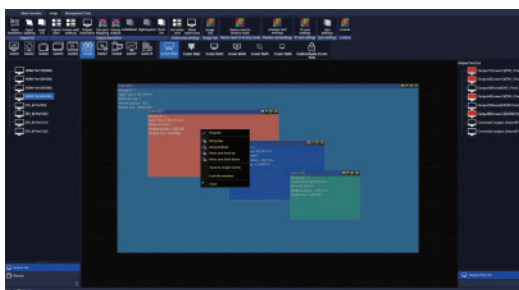
EDID Management

Customize input EDID: Support program PC to identify customized resolution, makes "Pixel by Pixel" much easier



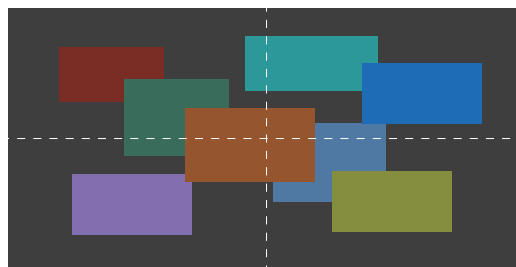
Visualization Software

Input & Output virtual preview by software. Ideal for real-time editing.



Display up to 8 Layers by Single Port

One single port of the output module supports 8 images at the same time. Total 8 layers processing, support any overlapping at any position on the video wall.



3D Splicing

Support left and right eye 3D splicing mode, 120HZ input and output 3D splicing mode. With internal Genlock 3D seamless split fusion, Switching between 2D and 3D switching between 2D and 3D mode could be done by software.



4K Pixel-to-Pixel Splicing

support multi-channel 4K input to realize wide range screen pixel to pixel splicing with internal Genlock Sync.



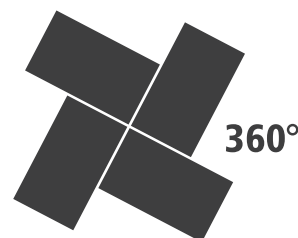
Control through iPad

Wireless control via iPad, support different preset switching. Offer Open API for third party control.

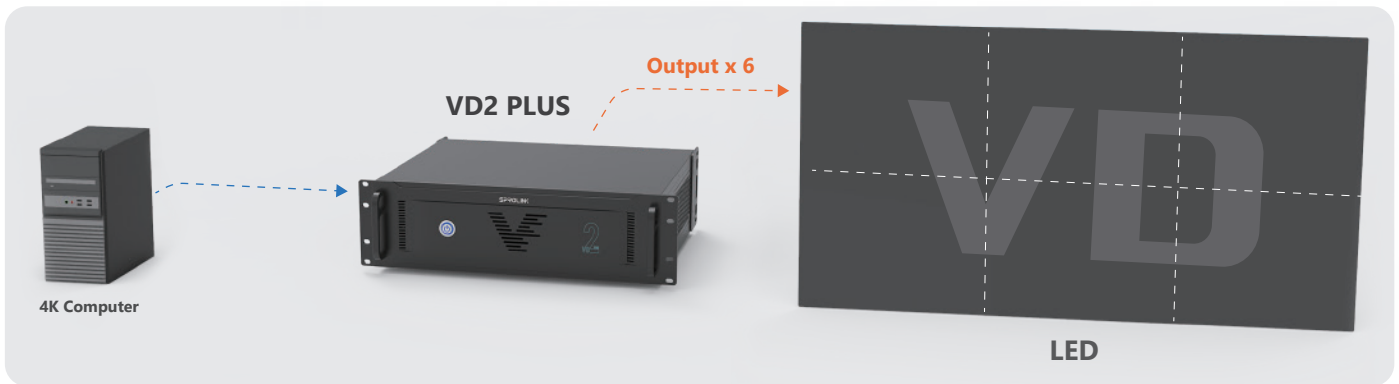


0-360° degree rotation splicing

Support any degree (0-360°) rotation splicing between different sizes, different screen LED/LCD/Projectors.



Solution 1: One input to multiple outputs in scaling mode



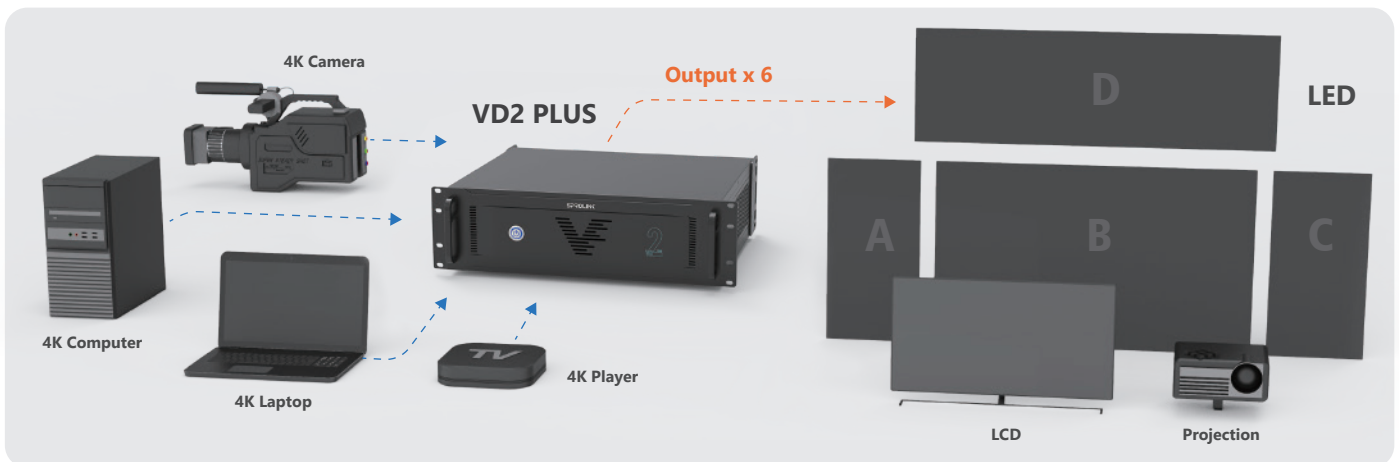
Solution 2: Multiple inputs and outputs in pixel to pixel splicing mode



Solution 3: Multiviewer and video wall controller all-in-one function



Solution 4: Connect to LED, LCD or projection screen in matrix mode



4 SPECIFICATION



Input module	4 x HDMI 1.3	 Resolution: 2K	Output module	4 x HDMI 1.3	 Resolution: 2K
	2 x HDMI 1.4	 Resolution: 2K/4K2K@30Hz		2 x HDMI 1.4	 Resolution: 2K/4K2K@30Hz
	2 x 4K@60Hz HDMI /DP	 Resolution: 2K/4K2K@30Hz/4K2K@60Hz		1 x HDMI 1 x RJ45	
	4 x HDbaseT	 Resolution: 2K		4 x HDbaseT	 Resolution: 2K
	4 x DVI-M	 Resolution: 2K		2 x DVI	 Resolution: 2K
	2 x IP 1 x USB	 Resolution: 2K		4 x DVI-M	 Resolution: 2K
	2 x DP1.1	 Resolution: 4K30Hz		2 x HDMI 2.0	 Resolution: Within 3840*2160@60Hz
	4 x SDI	 Resolution: 3G/HD/SD		4 x SDI	 Resolution: 2K
System control card	2 x RS232 1 x RJ45 Default IP: 192.168.1.200		3 x SDI 2 x DIN Resolution: 2K		
Device	Input voltage	AC input 100V~240V, 50/60Hz	Dimension	Device Weight	12KG
	Power consumption	depends on module qty		Device Dimensions	485 x 390 x 180mm
	Storage Temperature	0-70°C		Package Weight	15KG
	Storage Humidity	15-85%		Package Dimensions	525 x 440 x 225mm

SPROLINK®

XIAMEN SPROLINK SCIENCE & TECHNOLOGY CO., LTD

Unit 301, No. 1734, Gangzhong Road, Xiamen Free Trade Zone, China.

sales@sprolink.com +86 592 556 5698 www.sprolink.com