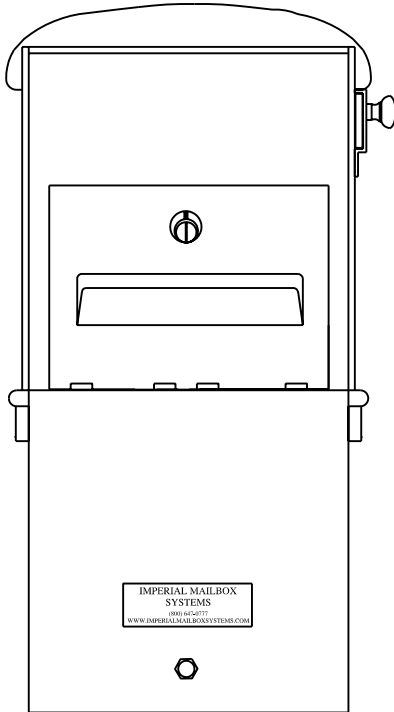


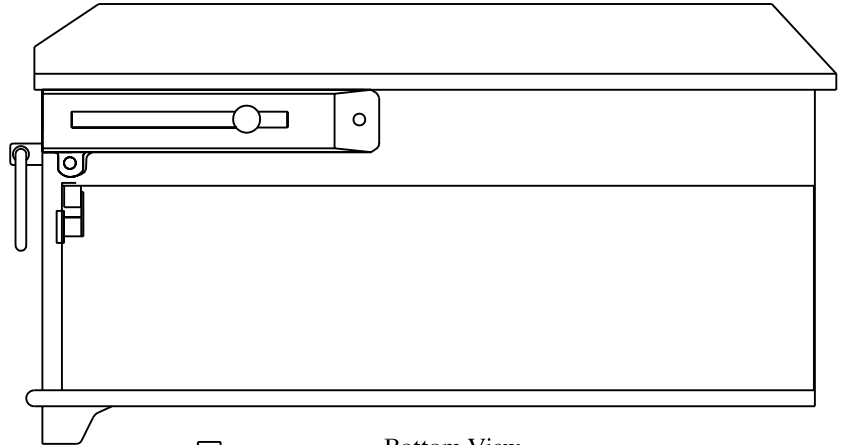


LOCKING INSERT

Front View

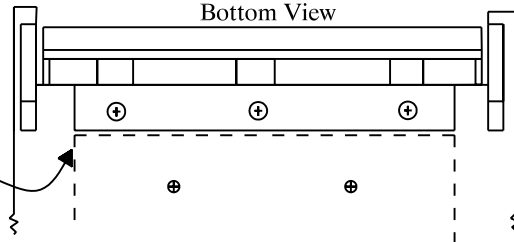


Side View



Bottom View

Align template with hinge



Locking Insert Dimensions:
Length: 17 7/8" - Width: 6 7/8"
Height: 4 7/8" - Weight: 2 1lb

LOCKING INSERT TEMPLATE

Place this edge beneath hinge for alignment.



Drill holes using 5/16" bit.



Locking Insert Installation Instruction:

Cut template along dotted line with scissors
Place template beneath hinge
Drill (2) 5/16" holes
Attach lock mechanism to insert door
Attach insert to box using 1/2" long screw and locking nut
(not included)

Adjustment of hinge screws may be required