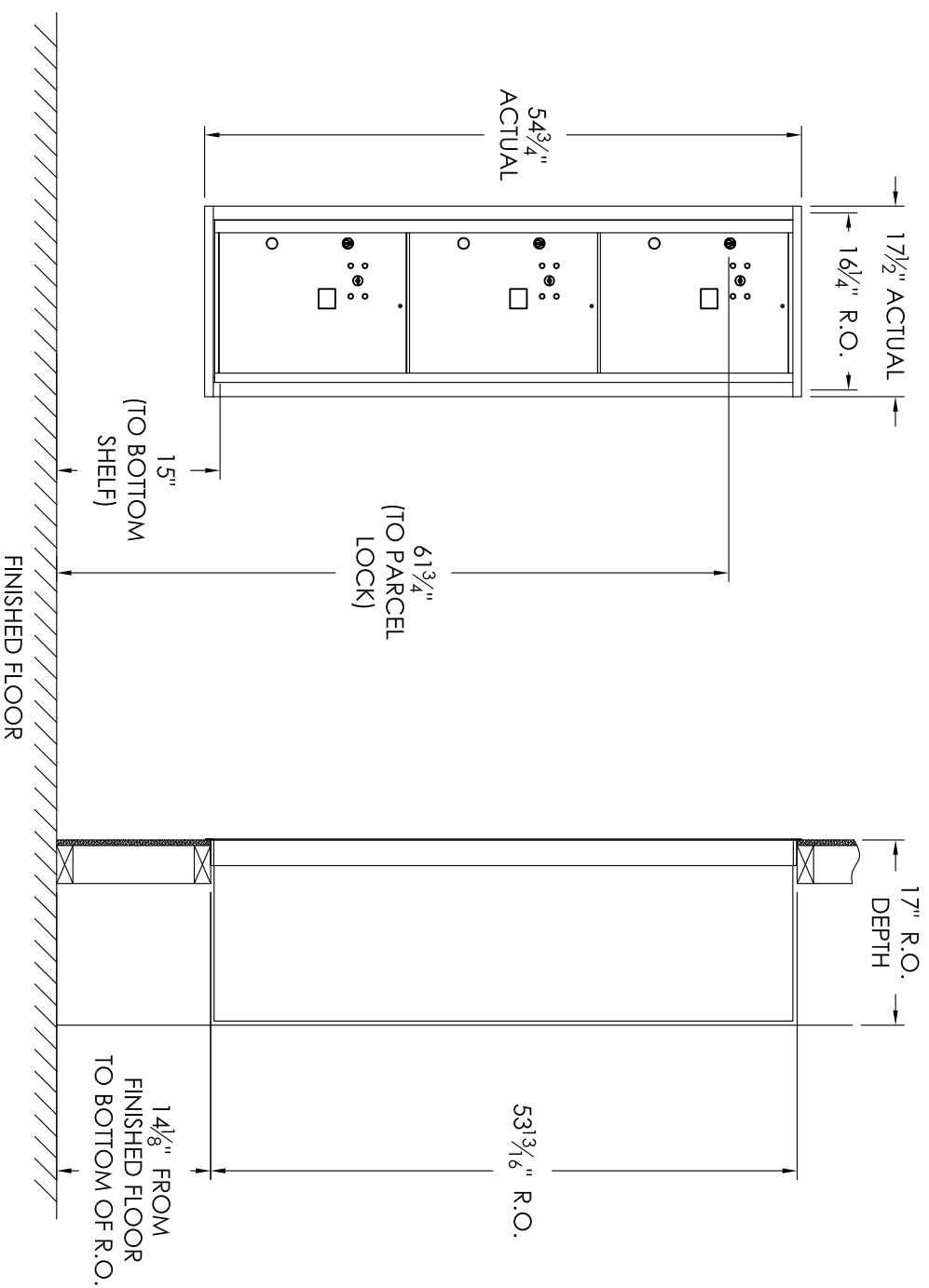


# Versatile™ 4C Mailbox, 4C15S-3P



## COMPARTMENT CHART

DESCRIPTION	COMPARTMENT	COMPARTMENT SIZE	QTY.
PARCEL	PLS	17" H x 12" W x 15" D	3

PRODUCT SERIES: VERSATILE™ 4C FRONT LOAD MAILBOX

### Notes:

- This module meets the USPS STD-4C requirements for installation defined below when the mailbox is installed per the dimensions provided on this drawing.
  - At least one customer compartment shall be positioned less than 48" above finished floor (AFF).
  - No parcel locker (interior bottom shelf) shall be positioned less than 15" AFF.
  - No patron (tenant) lock shall be positioned more than 67" AFF.
  - No customer compartment (interior bottom shelf) shall be positioned less than 28" AFF.
  - The USPS Arrow lock shall be positioned 36"-48" AFF.
- This 4C mailbox can also be used for private applications.
- The rough opening width for multi-unit 4C installations = (the sum of all actual unit widths) - 1 7/8".



**BudgetMailboxes**  
Best Brands. Best Prices. .com

WebLife Stores LLC  
PO Box 20338, Panama City Beach, FL 32417  
www.budgetmailboxes.com • (866) 707-0008

MODEL	REV
4C15S-3P	D
SCALE	LAST REV DATE
NONE	
DRAWING NUMBER	DRAWN BY
4C15S-3PCS	